

E-CF SERIES

Ceiling fans are the solution to saving money, conserving energy, and aid in temperature control and air circulation in drafty, poorly insulated, and hard-to-heat spaces.

During the hot summer months, operate fan blades in the forward or counter-clockwise rotation. This provides a down draft by forcing the air towards the floor and giving a wind chilled effect. During the cool winter months, ceiling fans should operate in reverse, or in the clockwise position to assist with heat distribution. In this direction, the fan blades create an updraft which forces the trapped warm air downward towards the perimeter of the room.

We offer three models to ensure the most cost-effective way to move large volumes of air in any indoor building, and even outdoor areas to meet your application needs. All three models feature a moisture resistant, 3-paddle polymer blade assembly. The blades are made from a ABS UV stable injection molding system for higher efficiency and quieter performance.

Features:

- ▶ 120-Volt / single phase, 60HZ electrical service
- ▶ Permanently sealed, double radial, ball bearing PSC AC motor provides maintenance free and quiet operation
- ▶ Low energy consumption - high efficiency performance
- ▶ White power coated finish on steel motor housing & downrod
- ▶ White polymer 3-paddle blade system designed for quiet operation
- ▶ Includes 24" stainless steel safety cable kit
- ▶ Easy to mount to the supplied steel J-Hook connection
- ▶ Satisfies the U.S. Department of Energy's "Energy Guide" requirements
- ▶ ETL Listed for USA & Canada
- ▶ 5-year limited warranty

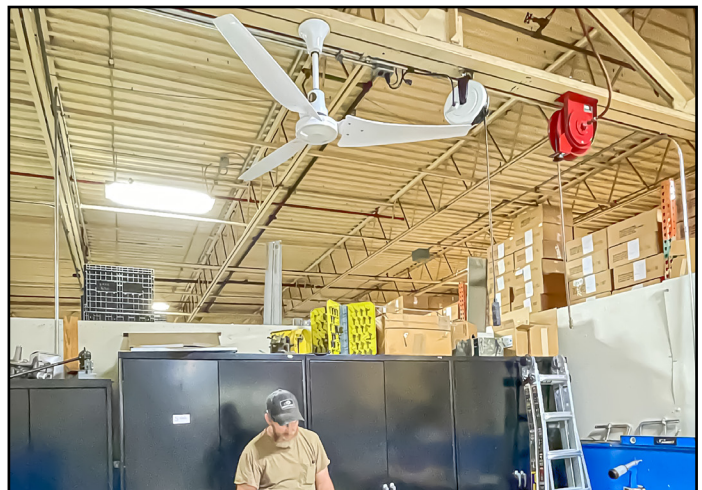


Models: E56-CF or E60-CF

Moisture Resistant
Indoor / Protected Outdoor
Forward / Reverse

- 56" or 60" overall diameter
- 18" steel downrod, 1" O.D.
- J-Hook connector has a 5/16" O.D.
- Direct 4-wire connection with 24" long lead wire, non corded
- Forward & reverse wiring option for downflow and upflow providing year round operation
- Use speed control accessory; TPI Model # KBWC-15SK
- Moisture resistant motor for damp locations for either indoor or protected outdoor* applications

* Where the unit will not be in direct contact with rain or water.



TPI Model #	TPI Part #	Blade Diameter	Airflow Options	Downrod Length	Voltage	Amps	Wattage	CFM	Motor RPM	Motor Type	Cord Included	Speed Controller
E-56CF	08198202	56"	Forward/Reverse	18"	120V	0.70	85	7,775	290	Moisture Rated	None	Sold Separately
E-60CF	08198302	60"	Forward/Reverse	18"	120V	0.70	90	8,434	260	Moisture Rated	None	Sold Separately

Models: E60-CFC

Indoor / Outdoor Rated
Plug & Play Install
Includes Speed Controller

- 60" overall diameter
- 24" steel downrod, 1" O.D.
- J-Hook connector has a 3/8" O.D.
- Corded model with molded 3-prong ground 16" long cordset
- Speed control switch device included for wall mount installation
- Downflow operation only
- Meets ANSI/UL 507 testing standards; IP65 rated equivalent
- Unit is suitable for use in wet locations when installed with a GFCI protected branch circuit



TPI Model #	TPI Part #	Blade Diameter	Airflow Options	Downrod Length	Voltage	Amps	Wattage	CFM	Motor RPM	Motor Type	Cord Included	Speed Controller
E-60CFC	08198402	60"	Down Draft	24"	120V	0.80	95	9,630	250	Wet Rated	Yes	Included; 3-Speed

How to Determine the Total # of Ceiling Fans Needed

Ceiling Height (feet)	Coverage Area (square feet)
10 - 11	600
12 - 13	800
14 - 15	950
16 - 17	1100
18 - 19	1300
20 - 21	1450

What to Measure:

Total Square Footage (L x W)
Maximum Ceiling Height

Small Area Example:

If you had a 3,000 square foot facility with 16' ceilings:
Calculation (Total Sq.Ft. / Coverage Area): 3,000/1,100 = 2.73
Total # of fans needed = 3

Large Area Example:

If you had a 10,000 square foot facility with 13' ceilings:
Calculation (Total Sq.Ft. / Coverage Area): 10,000/800 = 12.5
Total # of fans needed = 12 (See chart for layout)

