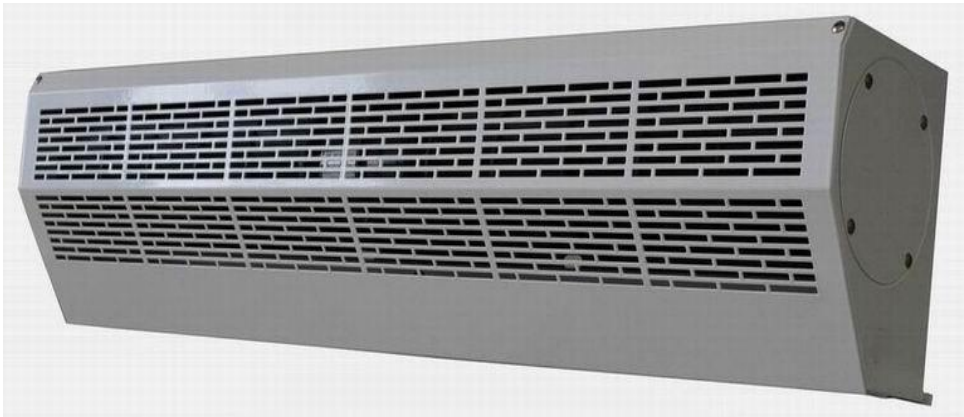


# **USER'S GUIDE**

## **AIR CURTAINS**

**Models: CF35-C, CF47-C, CF59-C**



**Thanks for purchasing this Air Curtain.**

**PLEASE READ AND SAVE THESE INSTRUCTIONS.**

**WARNING – TO REDUCE THE RISK OF FIRE, ELECTRIC SHOCK, OR INJURY TO PERSONS, OBSERVE THE FOLLOWING:**

- A. Always disconnect, lock and tag power source before installing or servicing. Failure to disconnect power source can result in fire, shock or serious injury.**
- B. Installation work and electrical wiring must be done by qualified person(s) in accordance with all applicable codes and standards, including fire-rated construction.**
- C. When cutting or drilling into wall or ceiling, do not damage electrical wiring and other hidden utilities.**
- D. To reduce the risk of fire or electric shock, do not use this fan with any solid-state speed control device**
- E. Repair and maintenance operations can only be performed by qualified personnel.**
- F. Verify and ensure the rated voltage and frequency (please refer to the rating label) of the air curtain is in compliance with the mains supply.**

## **CONTENTS**

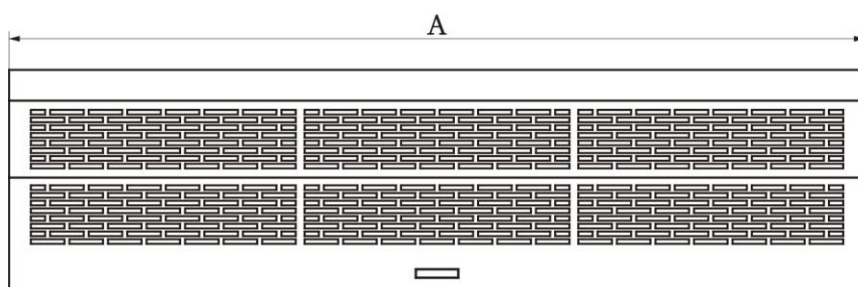
1. PRODUCT INTRODUCTIONS .....	2
2. INSTALLATION DIMENSIONS .....	2
3. INSTALLATION CAUTIONS .....	3
4. INSTALLATION INSTRUCTIONS .....	4
5. TECHNICAL PARAMETER .....	5
6. WIRING DIAGRAM .....	6
7. OPERATING INSTRUCTIONS .....	6
8. MAINTENANCE AND CLEANING .....	6

## 1. PRODUCT INTRODUCTIONS

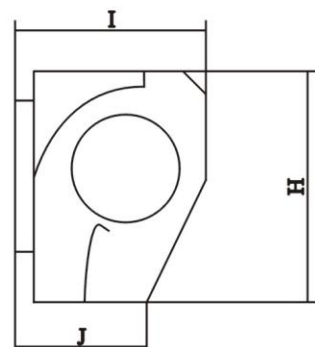
Air curtains are widely installed at the entrances of supermarket, theater, meeting room, hotel, office room, storeroom etc. They can reduce penetration of insects, dust...unconditioned air into a conditioned space by forcing an air stream over the entire entrance to create a comfortable environment for you.

## 2. INSTALLATION DIMENSIONS

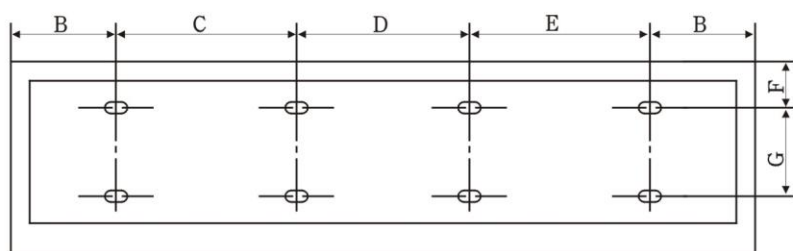
FRONT



SIZE



BACK



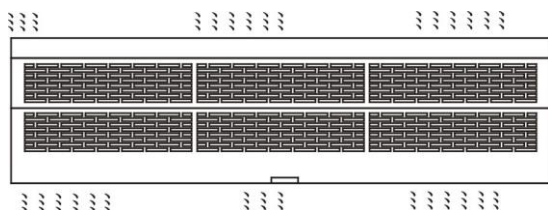
**UNIT: inch**

MODEL	A	B	C	D	E	F	G	H	I	J
CF35-C	35.43	1.18	11.42	22.05	---	2.05	5.71	10.24	8.58	5.04
CF47-C	47.24		16.93	10.63	16.93					
CF59-C	59.06		22.40	10.63	22.40					

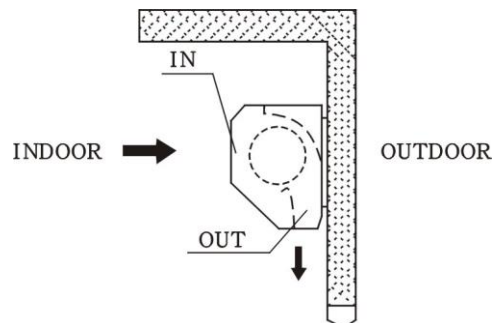
### 3. INSTALLATION CAUTIONS

Must observe the following when installing air curtains:

3.1 Please install the unit on a sturdy supporting structure to avoid shaking and ensure its security (because the unit running may cause the wall to become loose or shake and make noise).

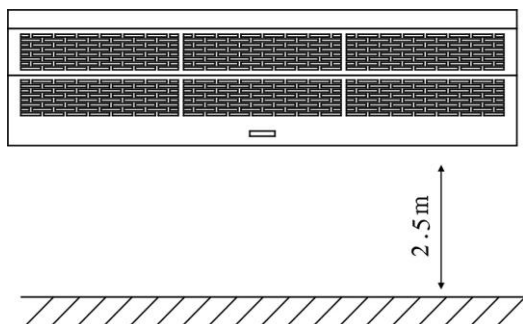


3.2 Please install the unit inside the room.

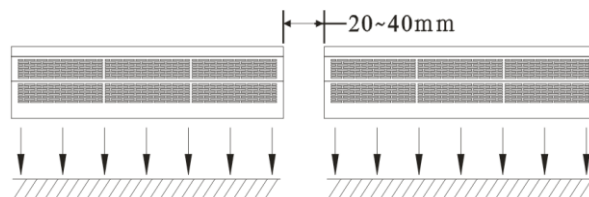


3.3 Don't install the unit too low, no less than 2.5 meters from the ground.

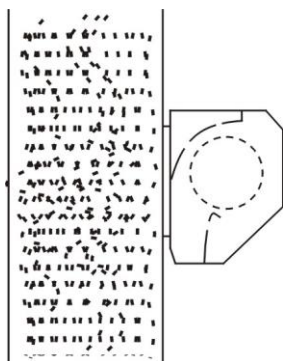
**ATTENTION : INSTALLER DE SORTE QUELES PIECES INFERIEURES SOIENT A AU MOINS 2.5 METRES AU-DESSUS DU PLANCHER OU DU SOL.**



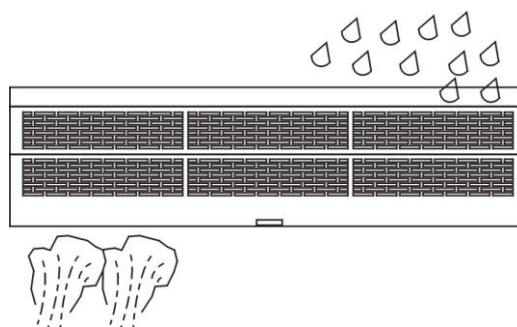
3.4 When the entrance is wider than the unit, it is recommended to install two or more units in parallel. In this case, provide 20-40mm gaps between the units.



3.5 Don't allow gaps between the unit and the wall.



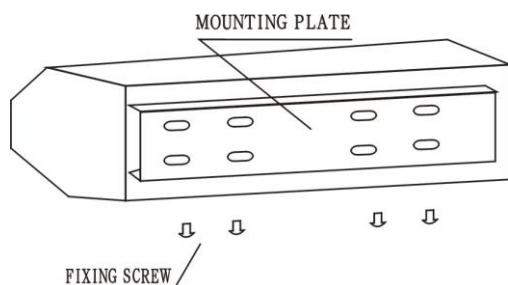
3.6 Don't install the unit at a place where it is splashed by water, exposed to excessive steam, explosive gas or corrosive gas.



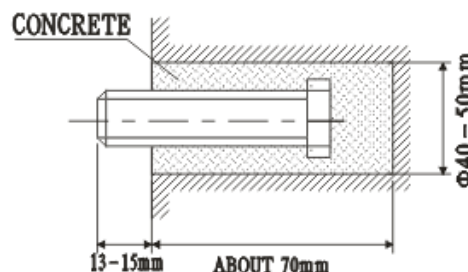
## 4. INSTALLATION INSTRUCTIONS

### A. Installing on the concrete wall:

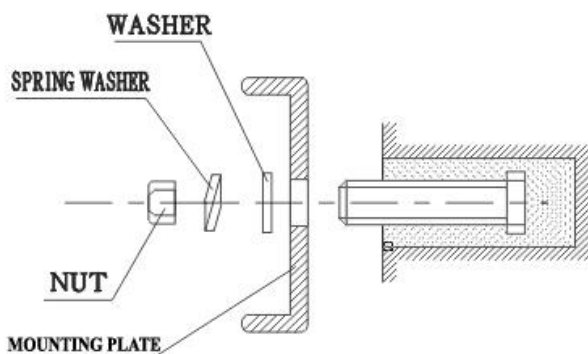
4.1.1 Unscrew the mounting plate and remove it from the back of the main body.



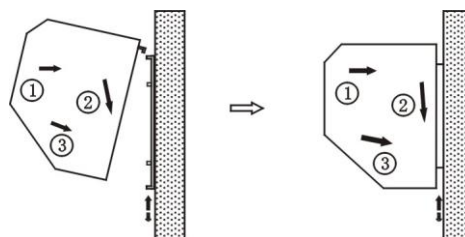
4.1.2 Determine the mounting location with the mounting plate. Fix the bolts in place and pour cement into the bolt holes.



4.1.3 Fix the mounting plate to the wall after cement setting (use the washers and nuts as the Fig shows).

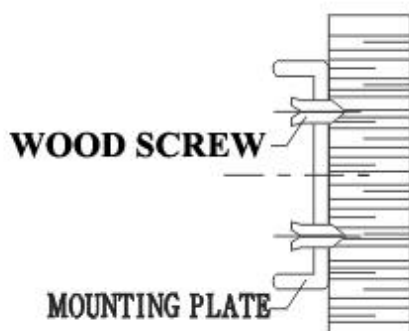


4.1.4 Mount the main body onto the mounting plate as the Fig shows and screw it back to the mounting plate.

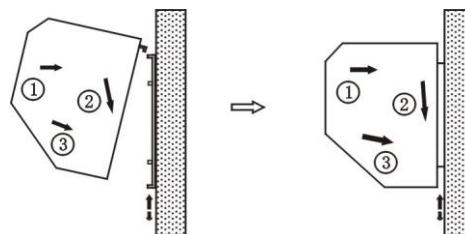


### B. Installing on the wooden wall:

4.2.1 Determine the mounting location as per the step 4.1.2 and fix the mounting plate to the wooden wall with tapping screws.

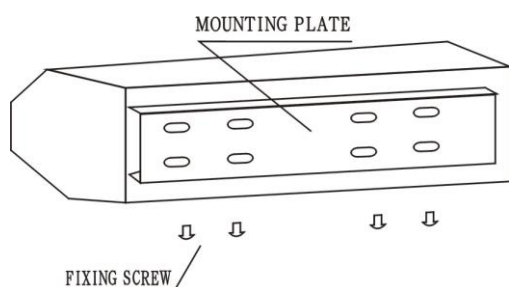


4.2.2 Same as the step 4.1.4

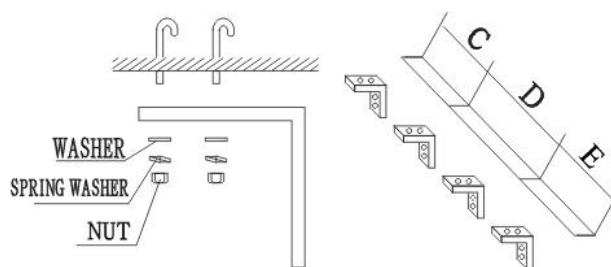


## C. Installing from the ceiling:

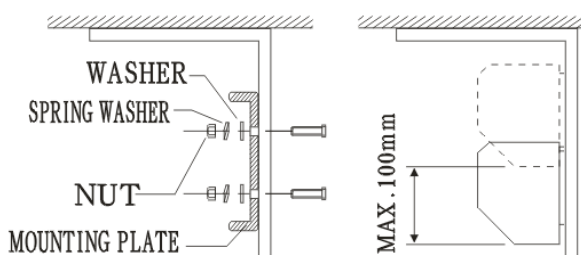
4.3.1 Remove the mounting plate from the main body as per the step 4.1.1



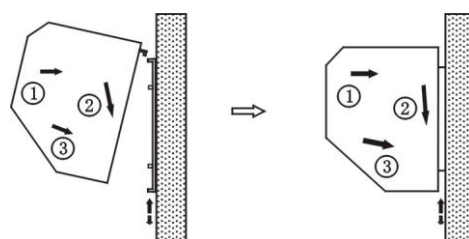
4.3.2 Fix the ceiling brackets as the Fig shows.



4.3.3 Fix the mounting plate to the ceiling brackets and tighten it securely as the Fig shows. The position of the mounting plate can be adjusted in vertical direction according to need, but the max distance is 100mm.



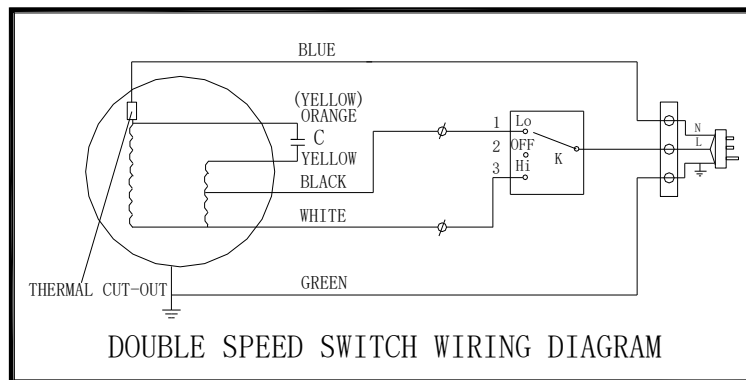
4.3.4 Same as the step 4.1.4



## 5. TECHNICAL PARAMETER

Model No.	Voltage (V~Hz)	Power (W)	Max air velocity (FPM)		Air volume (CFM)		Noise level (dB)		Net weight (Lb)
			H	L	H	L	H	L	
CF35-C	120~60	300	2560	1968	1177	942	67	65	33.1
CF47-C		350			1648	1295	69	67	43.0
CF59-C		400			2119	1648	71	69	48.5

## 6. WIRING DIAGRAM



## 7. OPERATING INSTRUCTIONS

7.1 Connect power to the unit.

7.2 Push the power switch to the left/right to switch on the unit. [L] - Low speed, [H] - High speed.

7.3 Adjust the air deflector to obtain optimum effect.

## 8. MAINTENANCE AND CLEANING

### WARNING:

- A. Any service is to be performed only by qualified personnel who are familiar with local codes and regulations and are experienced with this type of product.**
- B. Always unplug or disconnect the appliance from the power supply before servicing or cleaning the unit.**
- C. Never use petrol, benzene, thinners or any other such chemicals for cleaning the unit.**
- D. Don't allow water or any liquid to enter the motor.**

8.1. Routine maintenance must be done every year.

8.2. Plastic parts should be cleaned with mild soap water, thoroughly remove soap film with a clean damp cloth.

8.3. Wipe the exterior surfaces of the fan with a moistened cloth with a solution of mild detergent and water.

8.4. Dry the case with a soft dry cloth before operating the unit.