

Submittal Data Information

QuickTop Zone Valve™

Effective: December 20, 2018

Supersedes: NEW

Job: _____ Engineer: _____ Contractor: _____ Rep: _____

ITEM NO.	MODEL NO.	

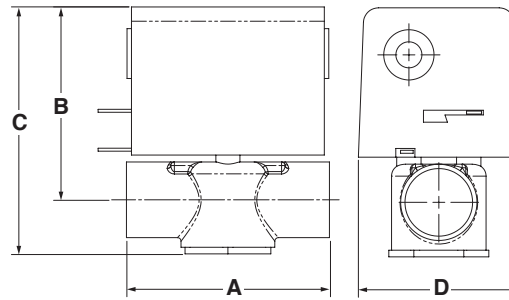
Product Specifications

Static Pressure Rating	300 PSI
Close-off Pressure.....	15 - 20 PSI
Ambient Temperature.....	32° - 125° F
Fluid Temp. Range	32° - 200° F
Service.....	Water or Water/Glycol up to 50% Glycol, Closed Systems
Motor Running Time.....	Power On: 10 - 20 seconds Spring Return: 4 - 5 seconds
Voltage.....	24 VAC ±10%, 60Hz
Power Consumption.....	5 W, 7.2 VA
Motor Wire Leads	24V, 18" yellow
Humidity.....	5% - 95% non-condensing
End Switch.....	1 x SPST, red wire

Application

Taco® QuickTop Zone Valves provide on-off, normally closed control in closed hydronic systems. The valves can be used in a wide variety of heating & cooling applications. Use with baseboard, fan coils, radiators, convectors, air handlers, heat pumps and radiant applications.

For Indoor Use Only



QuickTop Zone Valve Dimensions: (FOR REFERENCE PURPOSES)

Model Number	Connection Size	Inches (mm)				C _v (K _v)	Close-Off PSI (kPa)
		A	B	C	D		
QT050C2	1/2" Sweat	2-5/8 (66)	3-1/4 (83)	4-3/16 (106)	2-11/16 (68)	2.5 (2.0)	20 (138)
QT075C2	3/4" Sweat	2-3/4 (70)				3.5 (3.0)	20 (138)
QT100C2	1" Sweat	3-3/8 (86)				5.0 (4.3)	15 (103)

Replacement actuator model number: QTA024W4B1

Materials of Construction

Actuator:	
Housing	Stainless Steel base with Al cover
Valve:	
Body.....	Forged Brass
Stem.....	Brass with Nickel-Plate
Seals.....	NBR

