



Submittal Data Information

101-033

Model 0010 Cartridge Circulator

Effective: June 14, 2007

Supersedes: September 1, 2003

Job: _____ Engineer: _____ Contractor: _____ Rep: _____

ITEM NO.	MODEL NO.	IMP. DIA.	G.P.M.	HEAD/FT.	H.P.	ELEC. CHAR.

Features

- Standard high capacity output - Compact design
- Quiet, efficient operation
- Direct drive - Low power consumption
- Unique Replaceable Cartridge design (Field serviceable)
- Self Lubricating
- No mechanical seal
- Unmatched reliability - Maintenance free
- Universal flange to flange dimensions
- Cast Iron, Bronze or Stainless Steel construction

Application

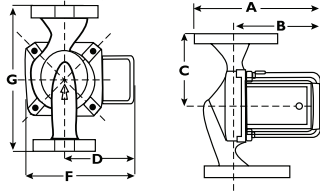
The Taco 0010 is designed for a wide range of large residential/light commercial water circulating applications. Typical uses include hydronic heating, radiant heating, primary-secondary loops, indirect water heaters, chilled water cooling, and potable hot water systems. The Bronze or Stainless Steel 0010 is designed for all open-loop, fresh water systems. The unique replaceable cartridge contains all of the moving parts and allows for easy service, instead of replacing the entire circulator. Compact, direct-drive, low power consumption design makes it ideal for high-efficiency jobs.

Pump Dimensions & Weights

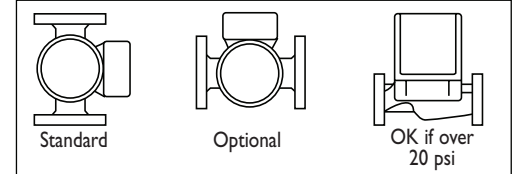
Model	Casing	A		B		C		D		F		G		Ship Wt.	
		in.	mm	in.	mm	in.	mm	in.	mm	in.	mm	in.	mm	lbs.	Kg
0010-F3	Cast Iron	7-1/4	184	5-5/16	135	3-3/16	81	3-5/16	84	5-3/8	137	6-3/8	162	10	4.5
0010-BF3	Bronze	7-1/4	184	5-5/16	135	3-3/16	81	3-5/16	84	5-3/8	137	6-3/8	162	10	4.5
0010-SF3	St.Steel	7-1/4	184	5-5/16	135	3-3/16	81	3-5/16	84	5-3/8	137	6-3/8	162	9	4

Materials of Construction

Casing (Volute): Cast Iron, Bronze or 304 Stainless Steel
 Stator Housing: Aluminum
 Cartridge: Stainless Steel
 Impeller: Non-metallic
 Shaft: Ceramic
 Bearings: Carbon
 O-Ring & Gaskets: EPDM



Mounting Positions



Model Nomenclature

F – Cast Iron, Flanged
 BF – Bronze, Flanged
 SF – 304 Stainless Steel, Flanged

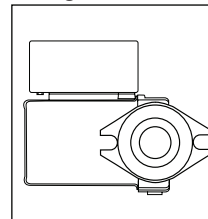
Variations:

Z – Zoning Circulator
 J – Bronze Cartridge with Cast Iron casing

Electrical Data

Model	Volts	Hz	Ph	Amps	RPM	HP
0010-F3	115	60	1	1.10	3250	1/8
0010-BF3/SF3	115	60	1	1.17	3250	1/8
Motor Type	Permanent Split Capacitor Impedance Protected					
Motor Options	220/50/1, 220/60/1, 230/60/1, 100/110/50/60/1					

Flange Orientation

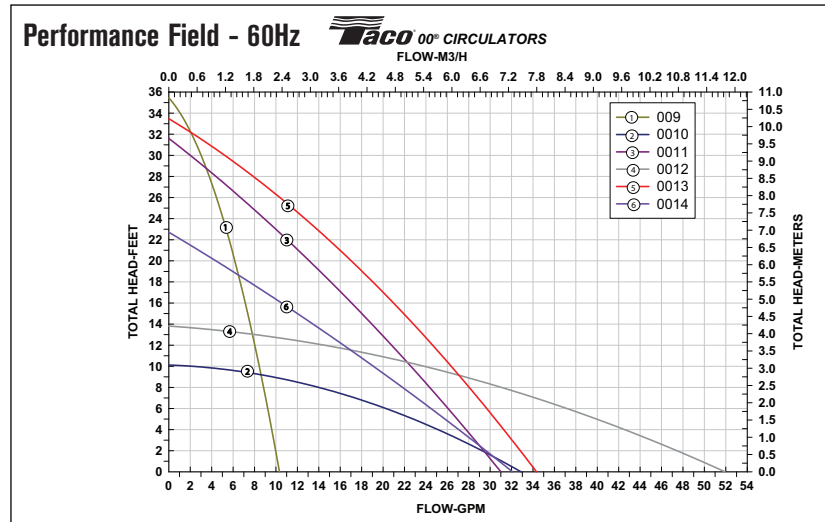


Performance Data

Flow Range: 0 – 32 GPM
 Head Range: 0 – 10 Feet
 Minimum Fluid Temperature: 40°F (4°C)
 Maximum Fluid Temperature: 230°F (110°C)
 Maximum Working Pressure: 125 psi
 Connection Sizes: 3/4", 1", 1-1/4", 1-1/2" Flanged



FOR INDOOR USE ONLY



Do it Once. Do it Right.®

TACO INC., 1160 Cranston Street, Cranston, RI 02920 Telephone: (401) 942-8000 Fax: 942-2360
 TACO (Canada), Ltd., 6180 Ordan Drive, Mississauga, Ontario L5T 2B3 Telephone: (905) 564-9422 Fax: (905) 564-9436
 Visit our website at: www.taco-hvac.com

Printed in USA
 Copyright 2007
 TACO, Inc.