



Submittal Data Information

Lead-Free Shut-Off *freedom* FLANGE®

101-171

Effective: September 10, 2018

Supersedes: New

Job: _____ Engineer: _____ Contractor: _____ Rep: _____

ITEM NO.	MODEL NO.	

Features

- Easy 1/4-turn Open/Close operation
- Positive shut-off, leak free design
- Swivel-Flange allows 360° rotation
- Solid lead-free brass construction
- Chrome/brass valve ball
- High quality Teflon® seats
- Full port ball valve for unrestricted flow
- 150# WP
- Available Sizes: 1/2" — 1-1/2" NPT
1/2" — 1-1/2" Sweat
- Includes Bolts and Nuts

Materials of Construction

Valve Body: Solid brass — Lead-Free
 Valve Ball: Chrome plated brass
 Flange: Epoxy powder coated steel
 Packing Seal: Teflon®
 Valve Seat : Teflon®
 Valve Stem: Brass
 Handle: Chrome plated steel/vinyl cover

¹Teflon is a Trademark of El Dupont de Nemours, Inc.

Operating Data

Maximum WP = 150 psi
 Maximum Operating Temp: 240°F (115°C)

Shut-off Flanges for Taco Circulator Models

Size	Model # NPT	Model # Sweat	Taco Circulator Model #
1/2"	SFL-050T	SFL-050S	006,005,007,008,009,0010
3/4"	SFL-075T	SFL-075S	0011,0013,0014, 00R, 0015
1"	SFL-100T	SFL-100S	110,111,112,113
1-1/4"	SFL-125T	SFL-125S	2400-10,2400-20,
1-1/2"	SFL-150T	SFL-150S	2400-45,2400-50
1-1/4"	SFL-125T-0012	SFL-125S-0012	0012-F4
1-1/2"	SFL-150T-0012	SFL-150S-0012	2400-30, 2400-40

Application

The Taco Lead-Free Shut-Off *freedom* FLANGE® is a combination full port shut-off ball valve and swivel companion flange for most Taco circulators. The simple quarter turn, lever handle operation allows for easy isolation, removal and service of circulators without draining the system. Each flange set includes bolts and nuts. Available in sizes 1/2" to 1-1/2", NPT and Sweat connections, rated for 240°F, 150# WP.

Dimensions & Weights

Model #	A Size	B in (mm)	C in (mm)	D in (mm)	E in (mm)	F in (mm)	G in (mm)	Wt./Set lbs. (kg)
SFL-050T	1/2" NPT	2 (51)	2 (51)	4-1/8 (105)	2-3/4 (70)	3-7/8 (98)	3-1/8 (79)	2.5 (1.1)
SFL-075T	3/4" NPT	2-1/4 (57)	2 (51)	4-1/8 (105)	2-3/4 (70)	3-7/8 (98)	3-1/8 (79)	3.0 (1.4)
SFL-100T	1" NPT	2-1/2 (64)	2-1/2 (64)	4-1/8 (105)	2-3/4 (70)	4-1/2 (114)	3-1/8 (79)	3.5 (1.6)
SFL-125T	1-1/4" NPT	2-3/4 (70)	2-7/8 (73)	4-1/8 (105)	2-3/4 (70)	4-1/2 (114)	3-1/8 (79)	4.0 (1.8)
SFL-150T	1-1/2" NPT	3-7/8 (98)	3-1/2 (89)	4-1/8 (105)	2-3/4 (70)	5-1/2 (140)	3-1/8 (79)	5.2 (2.3)
SFL-125T-0012	1-1/4" NPT	2-3/4 (70)	2-7/8 (73)	4-1/2 (114)	3 (76)	4-1/2 (114)	3-1/2 (89)	4.7 (2.1)
SFL-150T-0012	1-1/2" NPT	3-7/8 (98)	3-1/2 (89)	4-1/2 (114)	3 (76)	5-1/2 (140)	3-1/2 (89)	6.9 (3.1)
SFL-050S	1/2" Swt.	2 (51)	2 (51)	4-1/8 (105)	2-3/4 (70)	3-7/8 (98)	3-1/8 (79)	2.5 (1.1)
SFL-075S	3/4" Swt.	2-1/2 (64)	2 (51)	4-1/8 (105)	2-3/4 (70)	3-7/8 (98)	3-1/8 (79)	3.0 (1.4)
SFL-100S	1" Swt.	2-3/4 (70)	2-1/2 (64)	4-1/8 (105)	2-3/4 (70)	4-1/2 (114)	3-1/8 (79)	3.5 (1.6)
SFL-125S	1-1/4" Swt.	3 (76)	2-3/4 (70)	4-1/8 (105)	2-3/4 (70)	4-1/2 (114)	3-1/8 (79)	4.0 (1.8)
SFL-150S	1-1/2" Swt.	4-1/8 (105)	3-1/2 (89)	4-1/8 (105)	2-3/4 (70)	5-1/2 (140)	3-1/8 (79)	6.0 (2.7)
SFL-125S-0012	1-1/4" Swt.	3 (76)	2-3/4 (70)	4-1/2 (114)	3 (76)	4-1/2 (114)	3-1/2 (89)	4.7 (2.1)
SFL-150S-0012	1-1/2" Swt.	4-1/8 (105)	3-1/2 (89)	4-1/2 (114)	3 (76)	5-1/2 (140)	3-1/2 (89)	6.9 (3.1)

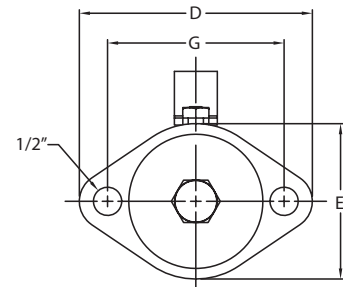
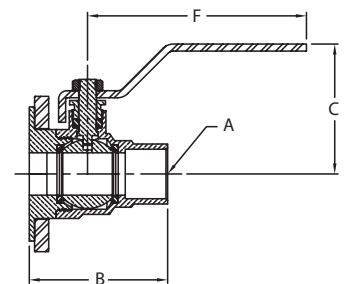
Dimensions and weights are approximate.



LEAD-FREE



Low-Lead Compliant



Taco, Inc., 1160 Cranston Street, Cranston, RI 02920 | Tel: (401) 942-8000 | FAX: (401) 942-2360

Taco (Canada), Ltd., 8450 Lawson Road, Suite #3, Milton, Ontario L9T 0J8 | Tel: (905) 564-9422 | FAX: (905) 564-9436

Visit our web site: www.TacoComfort.com | ©2020 Taco, Inc.

