

Submittal Data Information

Geo-Sentry® Series

101-153

Effective: October 25, 2017

Supersedes: May 30, 2016

Job: _____ Engineer: _____ Contractor: _____ Rep: _____

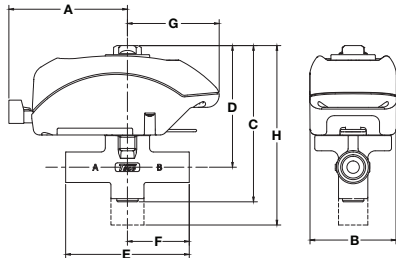
ITEM NO.	MODEL NO.	



Application:

The Geo-Sentry® zone valve provides on/off, normally open or normally closed control and is especially suited for use in either open or closed loop geothermal systems with water source heat pumps.

For Indoor Use Only



NOTE: Geo-Sentry is also available with Multi-Volt actuator

Product Specifications

Max. Operating Pressure.....	300 PSI (2100 kPa)
Max. Shutoff Pressure.....	125 PSI (875 kPa)
Max. Ambient Temp.	24V 135°F / Multi-Volt 150°F
Fluid Temp. Range.....	20-220°F (-7°-104°C)
Service.....	Open and closed systems
Fluids.....	Water Up to 25% Ethanol Up to 25% Methanol Up to 50% Glycol Steam 15 psi max.
Ball Rotation Speed.....	(90° turn), Approx. 5 seconds (After charge time)
Electrical Rating.....	24 VAC, 60Hz, 0.48 Amps
Power Consumption.....	11.4 W, 0.48 Amps (Charging)
Power Consumption.....	1.44W, 0.06 Amps (Power On)
Heat Anticipator Setting.....	0.5 Amps
End Switch Rating.....	1 Amp @ 24 VAC

Materials of Construction

Actuator:	
Body.....	High Performance Engineered Polymer
Gears.....	High Performance Internally Lubricated Engineered Polymer
Valve:	
Body.....	Forged Brass
Stem.....	Brass
Press Ring.....	Brass
Ball.....	Brass (Chrome Plated)
Seat.....	Modified Teflon®
O-Rings.....	EPDM

Geo-Sentry Dimensions: (FOR REFERENCE PURPOSES)

Valve Size	A		B		C		D		E (Sweat)		E (Threaded)		F		G		H (3-way)	
	in.	mm	in.	mm	in.	mm	in.	mm	in.	mm	in.	mm	in.	mm	in.	mm	in.	mm
1/2"	3"	76.2	2-3/8"	60.3	4-1/8"	104.7	3-1/16"	77.8	3-1/8"	79.3	3-3/4"	95.3	1-9/16"	39.7	2-5/16"	58.7	5-1/16"	128.5
3/4"	3"	76.2	2-3/8"	60.3	4-1/8"	104.7	3-1/8"	79.3	3-1/8"	79.3	3-5/16"	84.1	1-9/16"	39.7	2-5/16"	58.7	5-3/8"	136.4
1"	3"	76.2	2-3/8"	60.3	4-1/8"	104.7	3-1/8"	79.3	3-7/8"	98.4	3-7/8"	98.4	1-7/8"	47.6	2-5/16"	58.7	5-1/2"	139.7

NPT Models Normally Closed	2-Way	NPT Models Normally Closed	3-Way	Valve Size	Cv (Kv) / Ft of Pipe Equiv. **	Close-Off Pressure (kPa)	3-Way Cv (Kv) / Ft of Pipe Equiv. **
V050T2G2ZA024Q4A1	1/2" 2-way	V050T3G1ZA024Q4A1	1/2" 3-way	1/2"	4.9 (4.3) / 9.5	0-125 psi (0-862 kPa)	1.5 (1.3) / 111
V075T2G2ZA024Q4A1	3/4" 2 way	V075T3G1ZA024Q4A1	3/4" 3-way	3/4"	10.3 (8.9) / 8.4	0-125 psi (0-862 kPa)	3.3 (2.8) / 82
V100T2G2ZA024Q4A1	1" 2-way	V100T3G1ZA024Q4A1	1" 3-way	1"	8.9 (7.7) / 47.4	0-125 psi (0-862 kPa)	3.0 (2.6) / 411

Consult factory for additional model numbers
 **At 4' per second (Max. recommended residential flow rate).

