



Submittal Data Information

101-162

HF 5120 Series Lead-Free Mixing Valve

Supersedes: New

Effective: August 22, 2013

Job: _____ Engineer: _____ Contractor: _____ Rep: _____

ITEM NO.	MODEL NO.	

Features

- ≤ .25% lead
- ASSE 1017 Listed
- Ideal for Domestic Water Distribution Points
- Suitable for use in Potable Water
- Delivers Stable Mixed Water Temperature
- Extended Mix Temperature Range of 85-176°F (29-80°C)
- Tamper-Resistant Temperature Adjustment
- Union Sweat Connections
- Low Headloss
- Outlet Temperature Strip

Performance

- CV: 4.1
- Max. Flow: 27.2 gpm (100 L/Min)
- NOTE: Flow should never exceed standards for pipe size.
- Min. Flow: 2.5 gpm (9.5 L/Min)
- Hot Supply Temperature: 120-180°F (49-82°C)
- Cold Supply Temperature: 39-80°F (5-27°C)
- Max. Inlet Pressure: 230 psi (15.85 Bar)
- Max. Variation in Supply Pressure: 20%
- Min. Temperature Differential Between Hot Supply and Mixed: 27°F (15°C)
- Outlet Temperature Range: 85-175 F (29-80°C)
- Factory set to: 115-120°F (41-45°C)
- Accuracy of Outlet Temperature: ± 3°F

Materials

- Body: Brass ≤ .25% lead Brass
- Internal Components:
 - ≤ .25% lead Brass
 - Noryl GFN2
- Seals: Viton
- Spring: Stainless Steel
- Piston: Polysulfone
- Fittings: Varies (Brass, CPVC, Copper)
- Gaskets: EPDM

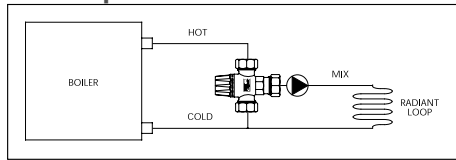
Approvals

- ASSE 1017
- cUPC Listed
- CSAB125.3

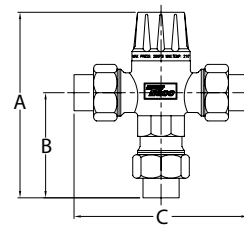
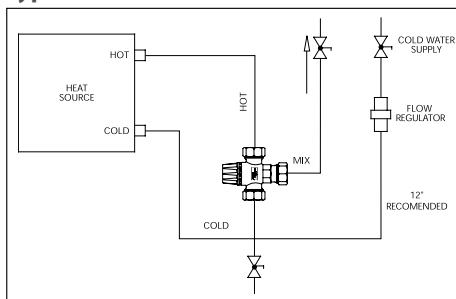
Application

This versatile NSF 61 ASSE 1017 mixing valve provides the ultimate performance for heating or domestic hot water installations where higher flow rates are required. The High Flow 5120 Series ASSE 1017 certification allows for domestic hot water storage at temperatures high enough to increase the effective storage capacity of a water heater, kill harmful bacteria and still be delivered at a safe 120°F or less. The High Flow Series is designed for installations where the required flow rates are beyond the specifications of the standard 5120 or 5000 series mixing valves. The valve's unique design and advanced thermostatic element ensures a stable mixed water temperature throughout the extended 85°-176°F range.

Low Temperature or Radiant Installation



Typical Domestic Water Installation



HF 5120 Series Mixing Valve Dimensions

Taco Model	Description	A Height		B Lower Height		C Width	
		In.	mm	In.	mm	In.	mm
5124-HF-C1	1" UNION SWEAT	5.4	137.2	3.3	83.8	6.1	154.9
5125-HF-C1	1 1/4" UNION SWEAT	5.7	144.8	3.6	91.4	6.6	167.6

Dimensions for reference only



Taco, Inc., 1160 Cranston Street, Cranston, RI 02920 | Tel: (401) 942-8000 | FAX: (401) 942-2360

Taco (Canada), Ltd., 8450 Lawson Road, Suite #3, Milton, Ontario L9T 0J8 | Tel: (905) 564-9422 | FAX: (905) 564-9436

Visit our web site: www.TacoComfort.com | Printed in USA | ©2015 Taco, Inc.

