

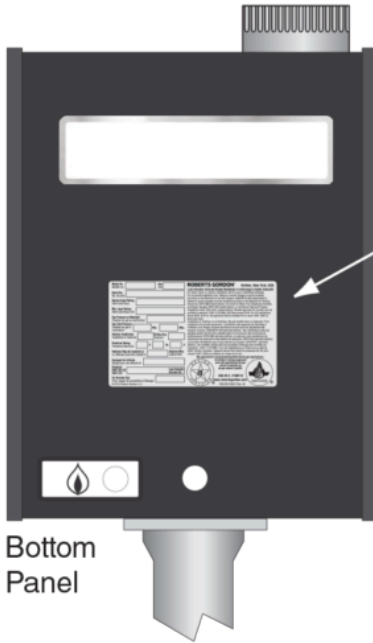
**ROBERTS GORDON®**  
The Exclusive Producer of **CORAYMAC®**

Search site...

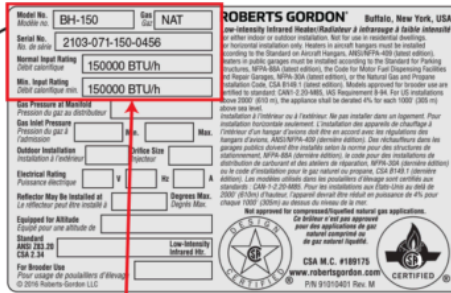
Menu

[Home](#) » Understanding Your Data Plate

# Understanding Your Data Plate



Bottom Panel



Rating Plate Label

Will show the specific model number for the given product. In this example this is a model "BH" burner that is 150,000 BTU/h.

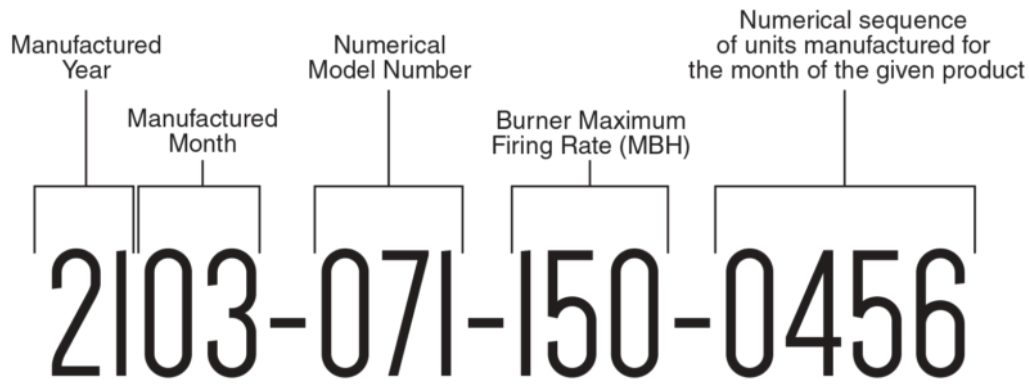
|   |                   |            |     |
|---|-------------------|------------|-----|
| Model No.<br>Modèle no.                     | BH-150            | Gas<br>Gaz | NAT |
| Serial No.<br>No. de série                  | 2103-071-150-0456 |            |     |
| Normal Input Rating<br>Débit calorifique    | 150000 BTU/h      |            |     |
| Min. Input Rating<br>Débit calorifique min. | 150000 BTU/h      |            |     |

Gas Type: NG (Natural Gas) or LP (Liquid Propane)

Each burner and vacuum pump will have a unique 14-digit serial number, controls have an 11-digit serial number. Roberts-Gordon began using this serial number format in 1994. The serial number format may not be consistent with the current format for units made prior to 1994. If this is the case, we recommend to try locating the replacement item using filtering guide and select the model number, burner input (MBH), and gas type. Or contact our customer service department at 716-852-4400 for assistance in identifying your product.

Indicates the burner input (MBH). Minimum input rating only varies for two-stage or modulating burners. If both Normal and Minimum input ratings are the same, that indicates that the burner is a single stage burner only.

# Understanding Your Serial Number



Serial numbers are located on both the burner shipping carton and the data plate. Each burner will have a unique 14-digit serial number used for identification purposes to allow the lookup of various items such as manufacture test records, replacement part identification, and manufactured date.

Listed below is a **cross reference for the numerical model number** as displayed in the serial number to the corresponding product model.

| Numerical Model Number | Product Model Name        |
|------------------------|---------------------------|
| 001                    | EP 201 Pump               |
| 002                    | EP 100 Pump               |
| 003                    | EP 203 Pump               |
| 004                    | EP 301 Pump               |
| 005                    | EP 303 Pump               |
| 006                    | CRV Modulating Controller |
| 008                    | UltraVac Controller       |
| 027                    | CRV-B / CRVSF             |
| 030                    | CTH2 / ET1                |

|            |                     |
|------------|---------------------|
| <b>031</b> | <b>CTH2V</b>        |
| <b>032</b> | <b>HE</b>           |
| <b>034</b> | <b>CTH3</b>         |
| <b>036</b> | <b>CTH2D / AG</b>   |
| <b>037</b> | <b>HED</b>          |
| <b>038</b> | <b>HEV</b>          |
| <b>039</b> | <b>HEM</b>          |
| <b>051</b> | <b>EV</b>           |
| <b>052</b> | <b>CTHN</b>         |
| <b>071</b> | <b>BH / ETBH</b>    |
| <b>073</b> | <b>DF</b>           |
| <b>077</b> | <b>GordonRay NP</b> |
| <b>080</b> | <b>CGTH</b>         |
| <b>090</b> | <b>TF / ET2</b>     |

AHRI | American National Standards Institute | ASHRAE | CSA Group | Infrared Heater Safety Council  
(IRSC) | National Fire Protection Association (NFPA)

© Roberts-Gordon Infrared Heating 2025