

VARIABLE SPEED DRIVES

FOR CHANGING SPEEDS
FREQUENTLY, RAPIDLY AND
EFFICIENTLY

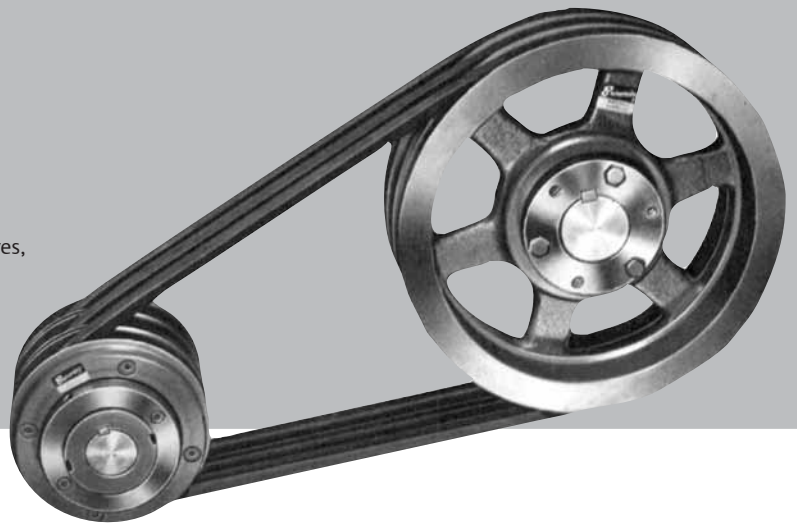
BROWNING offers one of the world's most complete selections of in-stock variable speed drives, including variable pitch sheaves through 750 HP.

Sheaves for BROWNING® variable speed drives are available in finished bore or bushing types, for use with Browning Split Taper® design or Q-D® bushings. Offered in Classical (A-B, C & D), "358" narrow groove, wide range and fractional horsepower types, MVP® sheaves are dynamically balanced to help provide smooth, vibration-free performance.

Select from:

- **VL and VM single groove sheaves**, pitch diameter range 1.6-4.7", for light duty applications up to 5HP.
- **VP single and double groove sheaves**, pitch diameter range 3.4-7.0", designed for heavier duty service up to 25 HP.
- **LVP double groove sheaves**, pitch diameter range 6.0-8.4", for heavier duty drives up to 30 HP
- **MVP® multiple groove sheaves** (up to 10 grooves available), pitch diameter range 3.4-17.2", for multiple belt drives up to 750 HP.

Choose also from a full range of fixed pitch and companion sheaves, V-belts, adjustable motor bases, motors and drives, to perform almost any power transmission service.



VL, VM, VP variable speed sheaves



LVP variable speed sheave

**VORTEX™
DESIGN**



MVP® variable speed sheave



MVP® companion sheave

VARIABLE SPEED SHEAVES

Belt Size	Type		No. of Grooves	Pitch Dia. Range	Bore Range
A-B	MVP®	Bushing Type	2-6	A-5.9 - 7.0" 7.9 - 9.0 B-6.0 - 7.4 8.0-9.4	3/4-2 5/8"
		Finished Bore	2 - 6	A-3.4 - 4.5 6.9 - 8.0 B-3.5 - 4.9 7.0 - 8.4	7/8 - 2 1/8
C	MVP®	Bushing Type	2 - 4	7.5 - 9.7 11.5 - 13.7	1-2 5/8
		Finished Bore	5-10	7.5 - 9.7 11.5 - 13.7	1 7/8 - 3 3/8
5V	MVP®	Finished Bore Narrow Groove	3-10*	8.1 - 9.5 11.1 - 12.5	1 7/8 - 3 3/8

*3-Groove is Bushing Type, Bore Range 1 - 2 5/8"

VARIABLE PITCH SHEAVES

Type			3L	4L or A	5L or B
Single Groove Cast Iron	Finished Bore 1/2" - 7/8"	VL	1.6 - 2.4" 1.8 - 2.7	1.9 - 2.9" 2.8 - 3.8	
		VM		1.9 - 2.9 3.4 - 4.4	2.4 - 3.2 " 3.7 - 4.7
	Finished Bore 1/2 - 1 1/8	1VP	1.4 - 2.2 5.1 - 5.9	1.9 - 2.9 5.7 - 6.7	2.4 - 3.2 5.8 - 7.0
Two Groove Cast Iron	Finished Bore 1/2 - 1 1/8	2VP	1.9 - 2.7 5.1 - 5.9	2.0 - 3.0 5.7 - 6.7	2.5 - 3.3 5.8 - 7.0

EXTENDED HP AND BORE RANGE

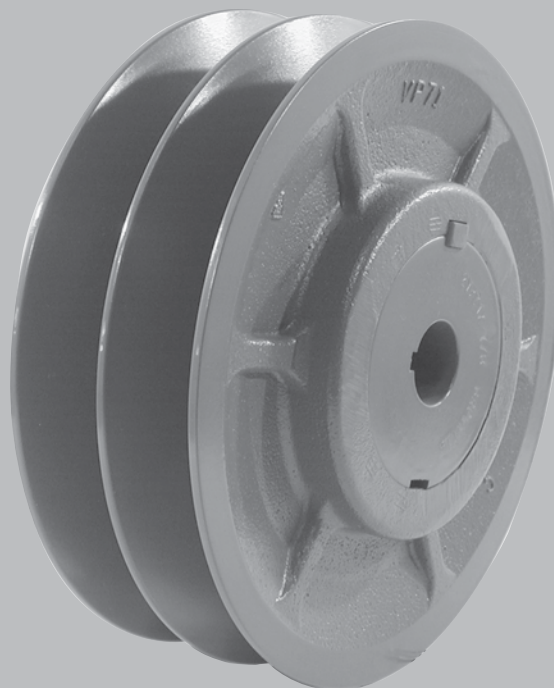
Belt Size	Type		No. of Grooves	Pitch Diameter Range	Bore Range
5V	2VP	Finished Bore	2	5.8 - 7.0	1 5/8 "
				6.2 - 7.4	
				5.8 - 7.4 6.2 - 7.4	
B-5V	2V	Finished Bore	2	5B-5.8-7.0 6.8-8.0	1 5/8
				5V-6.2-7.4 7.2-8.4	1 7/8

COMPANION SHEAVES

Belt Size	Type		No. of Grooves	Pitch Diameter Range	Bore Range
A-B	MVP®	Bushing Type	3 - 6	A - 4.6 - 37.5 B - 5.0 - 38.0	1/2 - 3 3/4"
C	MVP®	Bushing Type	3 - 10	8.0 - 50.0	1 - 7 7/16
5V	MVP®	Narrow Groove Bushing Type	3 - 10	7.9 - 49.9	1 1/8 - 5

VP

The principle of a variable pitch sheave is that the threaded angular faced discs forming the V-shaped groove in which the belt rides are movable. VP sheaves consist of a male with a threaded barrel, and a female with a threaded bore. The male section with threaded barrel has flat surfaces at 180 degree increments that allow a flat surface for the setscrew to mate with. When the discs are moved toward each other, the belt rides higher in the groove and the pitch diameter of the sheave is larger which increases the driven speed. When the discs are moved away from each other, the belt rides lower and the pitch diameter is smaller decreasing the driven speed. The common term for this speed adjustment is called “Number Of Turns Open From Closed Position”



MVP® Sheaves

MVP® sheaves are a series of angular faced center flanges which are bolted to the fixed flange mounted on the barrel and another series of angular faced flanges which are bolted to the end flange and threaded locking collar. When the threaded locking collar is turned clockwise, it moves the angular flanges closer together increasing the pitch diameter. When the collar is moved counterclockwise, the flanges are moved apart, decreasing the pitch diameter. The pitch diameter is infinite (meaning you can turn the adjustment collar and stop at any time regardless of location) between the minimum and the maximum setting. When the desired diameter is obtained, the locking collar is locked by tightening screws. In contrast VL, VP, and VM sheaves are limited by “half-turn” or 180 degree adjustment points.



Table No. 1 1 and 2 Groove "A - B" Variable Pitch Sheaves

Datum Diameter		1 Groove		2 Groove				
"A" Belts	"B" Belts	Finished Bore Page C - 8	Finished Bore Page C - 6	Finished Bore Page C - 7	Finished Bore Page C - 9	Bushed Page C - 9	Finished Bore Page C - 10	Bushed Page C - 11
1.9" - 2.9"	2.4" - 3.2"	1VL34	1VP34	—	—	—	—	—
2.0 - 3.0	2.5 - 3.3	—	—	2VP36	—	—	—	—
2.4 - 3.4	2.7 - 3.7	1VL40	1VP40	—	—	—	—	—
2.6 - 3.6	2.9 - 3.9	—	—	2VP42	—	—	—	—
2.8 - 3.8	3.1 - 4.1	1VL44	1VP44	—	—	—	—	—
3.4 - 4.4	3.7 - 4.7	1VM50	1VP50	2VP50	—	—	—	—
3.4 - 4.5	3.5 - 4.9	—	—	—	—	—	2MVP35B49	—
3.9 - 5.0	4.0 - 5.4	—	—	—	—	—	2MVP40B54	—
4.0 - 5.0	4.3 - 5.3	—	1VP56	2VP56	—	—	—	—
4.2 - 5.2	4.3 - 5.5	—	1VP60	2VP60	—	—	—	—
4.4 - 5.5	4.5 - 5.9	—	—	—	—	—	2MVP45B59	—
4.6 - 5.6	4.9 - 5.9	—	1VP62	2VP62	—	—	—	—
4.7 - 5.7	4.8 - 6.0	—	1VP65	2VP65	—	—	—	—
4.9 - 6.0	5.0 - 6.4	—	—	—	—	—	2MVP50B64	—
5.2 - 6.2	5.5 - 6.5	—	1VP68	2VP68	—	—	—	—
5.3 - 6.3	5.4 - 6.6	—	1VP71	2VP71	—	—	—	—
5.4 - 6.5	5.5 - 6.9	—	—	—	—	—	2MVP55B69	—
5.7 - 6.7	5.8 - 7.0	—	1VP75	2VP75	2V58B70 x 1 7/8	2VP58B70P	—	—
5.9 - 7.0	6.0 - 7.4	—	—	—	—	—	—	2MVP60B74P
6.7 - 7.7	6.8 - 8.0	—	—	—	2V68B80 x 1 7/8	2V68B80P	—	—
6.9 - 8.0	7.0 - 8.4	—	—	—	—	—	—	2MVP70B84P
7.9 - 9.0	8.0 - 9.4	—	—	—	—	—	—	2MVP80B94Q

Table No. 2 3 to 6 Grooves "A - B" Variable Pitch Sheaves

Datum Diameter		3 Grooves		4 Grooves		5 Grooves		6 Grooves	
"A" Belts	"B" Belts	Finished Bore Page C - 10	Bushed Page C - 11	Finished Bore Page C - 10	Bushed Page C - 11	Finished Bore Page C - 10	Bushed Page C - 11	Finished Bore Page C - 10	Bushed Page C - 11
3.4" - 4.5"	3.5" - 4.9"	3MVP35B49	—	4MVP35B49	—	5MVP35B49	—	—	—
3.9 - 5.0	4.0 - 5.4	3MVP40B54	—	4MVP40B54	—	5MVP40B54	—	6MVP40B54	—
4.4 - 5.5	4.5 - 5.9	3MVP45B59	—	4MVP45B59	—	5MVP45B59	—	6MVP45B59	—
4.9 - 5.5	5.0 - 6.4	3MVP50B64	—	4MVP50B64	—	5MVP50B64	—	6MVP50B64	—
5.4 - 6.5	5.5 - 6.9	3MVP55B69	—	4MVP55B69	—	5MVP55B69	—	6MVP55B69	—
5.9 - 7.0	6.0 - 7.4	3MVP60B74	3MVP60B74P	4MVP60B74	4MVP60B74P	5MVP60B74	5MVP60B74P	6MVP60B74	6MVP60B74P
6.9 - 8.0	7.0 - 8.4	3MVP70B84	3MVP70B84P	4MVP70B84	4MVP70B84P	5MVP70B84	5MVP70B84P	6MVP70B84	6MVP70B84P
7.9 - 9.0	8.0 - 9.4	—	3MVP80B94Q	—	4MVP80B94Q	—	5MVP80B94Q	—	6MVP80B94Q

Table No. 3 2 to 10 Grooves "C" Variable Pitch Sheaves

Datum Diameter "C" Belts	2 Grooves		3 Grooves	4 Grooves	5 Grooves	6 Grooves	7 Grooves	8 Grooves	10 Grooves
	Bushed Page C - 14	Bushed Page C - 14	Bushed Page C - 14	Bushed Page C - 14	Finished Bore Page C - 15	Finished Bore Page C - 15	Finished Bore Page C - 15	Finished Bore Page C - 15	Finished Bore Page C - 15
7.2" - 9.0"	2V72C90Q	—	—	—	—	—	—	—	—
7.5 - 9.7	—	2MVP75C97Q	3MVP75C97Q	4MVP75C97Q	5MVP75C97	6MVP75C97	7MVP75C97	8MVP75C97	10MVP75C97
8.0 - 10.2	—	—	3MVP80C102Q	—	—	—	—	—	—
8.2 - 10.0	2V82C100Q	—	—	—	—	—	—	—	—
8.5 - 10.7	—	2MVP85C107Q	3MVP85C107Q	4MVP85C107Q	5MVP85C107	6MVP85C107	7MVP85C107	8MVP85C107	10MVP85C107
9.0 - 11.2	—	—	3MVP90C112Q	—	—	—	—	—	—
9.2 - 11.0	2V92C110Q	—	—	—	—	—	—	—	—
9.5 - 11.7	—	2MVP95C117Q	3MVP95C117Q	4MVP95C117Q	5MVP95C117	6MVP95C117	7MVP95C117	8MVP95C117	10MVP95C117
10.5 - 12.7	—	2MVP105C127Q	3MVP105C127Q	4MVP105C127Q	5MVP105C127	6MVP105C127	7MVP105C127	8MVP105C127	10MVP105C127
11.5 - 13.7	—	2MVP115C137Q	3MVP115C137Q	4MVP115C137Q	5MVP115C137	6MVP115C137	7MVP115C137	8MVP115C137	10MVP115C137

Table No. 4 1 to 10 Groove "5V" Variable Pitch Sheaves

Pitch Diameter "5V" Belts	1 Groove	2 Grooves	3 Grooves	4 Grooves	5 Grooves	6 Grooves	8 Grooves	10 Grooves
	Fin. Bore Page C-6	Fin. Bore & Bush Page C-7 & C-9	Bushed Page C - 19	Finished Bore Page C - 19	Finished Bore Page C - 19	Finished Bore Page C - 19	Finished Bore Page C - 19	Finished Bore Page C - 19
4.7" - 5.9"	1VP60, 1VP62	2VP60, 2VP62	—	—	—	—	—	—
5.2 - 6.4	1VP65, 1VP68	2VP65, 2VP68	—	—	—	—	—	—
5.8 - 7.0	1VP71	2VP71	—	—	—	—	—	—
6.2 - 7.4	1VP75	2VP75	—	—	—	—	—	—
7.2 - 8.4	—	2V58B70 X 1 7/8 2V58B70P 2V68B80 X 1 7/8 2V68B80P	—	—	—	—	—	—
8.1 - 9.5	—	—	3MVP815V95Q	4MVP815V95	5MVP815V95	6MVP815V95	8MVP815V95	10MVP815V95
9.1 - 10.5	—	—	3MVP915V105Q	4MVP915V105	5MVP915V105	6MVP915V105	8MVP915V105	10MVP915V105
10.1 - 11.5	—	—	3MVP1015V115Q	4MVP1015V115	5MVP1015V115	6MVP1015V115	8MVP1015V115	10MVP1015V115
11.1 - 12.5	—	—	3MVP1115V125Q	4MVP1115V125	5MVP1115V125	6MVP1115V125	8MVP1115V125	10MVP1115V125

Table No. 1 "A - B" Companion Sheaves

Datum Diameter		3 Grooves	4 Grooves	5 Grooves	6 Grooves
"A"	"B"	Page C - 12	Page C - 12	Page C - 13	Page C - 13
4.6"	5.0"	3MVB50P(P1)	4MVB50Q(Q2)	5MVB50Q(Q2)	—
5.0	5.4	3MVB54P(P1)	4MVB54Q(Q2)	5MVB54Q(Q2)	6MVB54Q(Q2)
5.6	6.0	3MVB60P(P1)	4MVB60Q(Q2)	5MVB60Q(Q2)	6MVB60Q(Q2)
6.0	6.4	3MVB64P(P1)	4MVB64Q(Q2)	5MVB64Q(Q2)	—
6.6	7.0	3MVB70Q(Q1)	4MVB70Q(Q2)	5MVB70R(R2)	6MVB70R(Q2)
7.0	7.4	3MVB74Q(Q1)	4MVB74Q(Q2)	5MVB74R(R2)	—
7.6	8.0	3MVB80Q(Q1)	4MVB80Q(Q2)	5MVB80R(R2)	—
8.2	8.6	3MVB86Q(Q1)	4MVB86Q(Q2)	5MVB86R(R2)	—
8.6	9.0	3MVB90Q(Q1)	4MVB90Q(Q2)	5MVB90R(R2)	—
9.0	9.4	3MVB94Q(Q1)	4MVB94Q(Q2)	5MVB94RR(R2)	6MVB94R(Q2)
10.6	11.0	3MVB110Q(Q1)	4MVB110R(R1)	5MVB110R(R2)	6MVB110R(R2)
12.0	12.4	3MVB124Q(Q1)	4MVB124R(R1)	5MVB124R(R2)	6MVB124R(R2)
13.2	13.6	3MVB136Q(Q1)	4MVB136R(R1)	5MVB136R(R2)	6MVB136R(R2)
15.0	15.4	3MVB154Q(Q1)	4MVB154R(R1)	5MVB154R(R2)	6MVB154R(R2)
15.0	15.4	3MVB154R(R1)	—	—	—
18.0	18.4	3MVB184Q(Q1)	4MVB184R(R1)	5MVB184R(R2)	6MVB184R(R2)
18.0	18.4	3MVB184R(R1)	—	—	—
19.5	20.0	3MVB200R(R1)	4MVB200R(R1)	5MVB200R(R2)	6MVB200R(R2)
24.5	25.0	3MVB250R(R1)	4MVB250R(R1)	5MVB250R(R2)	6MVB250R(R2)
29.5	30.0	3MVB300R(R1)	4MVB300R(R1)	5MVB300R(R2)	6MVB300R(R2)
37.5	38.0	3MVB380R(R1)	4MVB380R(R1)	5MVB380R(R2)	6MVB380R(R2)



Table No. 2 "C" Companion Sheaves

Datum Diameter	3 Grooves	4 Grooves	5 Grooves	6 Grooves
"C"	Page C - 16	Page C - 16	Page C - 17	Page C - 17
8.0"	3MVC80Q(Q2)	4MVC80Q(Q2)	5MVC80R(R2)	6MVC80R(R2)
8.6	3MVC86Q(Q2)	4MVC86Q(Q2)	5MVC86R(R2)	—
9.0	3MVC90Q(Q2)	4MVC90Q(Q2)	5MVC90R(R2)	—
9.6	3MVC96Q(Q2)	4MVC96Q(Q2)	5MVC96R(R2)	—
10.0	3MVC100Q(Q2)	4MVC100Q(Q2)	5MVC100R(R2)	—
10.6	3MVC106Q(Q2)	4MVC106Q(Q2)	5MVC160R(R2)	6MVC106R(R2)
11.0	3MVC110Q(Q2)	4MVC110Q(Q2)	5MVC110R(R2)	6MVC110R(R2)
12.0	3MVC120Q(Q2)	4MVC120R(R2)	5MVC120R(R2)	6MVC120R(R2)
13.0	3MVC130R(R2)	4MVC130R(R2)	5MVC130R(R2)	—
14.0	3MVC140R(R1)	4MVC140Q(R2)	5MVC140R(R2)	6MVC140R(R2)
16.0	3MVC160R(R1)	4MVC160R(R2)	5MVC160R(R2)	6MVC160R(R2)
18.0	3MVC180R(R1)	4MVC180R(R2)	5MVC180S(S2)	6MVC180S(S2)
20.0	3MVC200R(R1)	4MVC200R(R2)	5MVC200S(S2)	6MVC200S(S2)
24.0	3MVC240R(R1)	4MVC240R(R2)	5MVC240S(S2)	6MVC240S(S2)
27.0	3MVC270R(R2)	4MVC270R(R2)	5MVC270S(S2)	—
30.0	3MVC300R(R2)	4MVC300R(R2)	5MVC300S(S2)	—
36.0	3MVC360R(R2)	4MVC360R(R2)	5MVC360S(S2)	6MVC360S(S2)
44.0	3MVC440U(U0)	—	5MVC440U(U0)	—
50.0	3MVC500U(U0)	4MVC500U(U0)	5MVC500U(U0)	—

Bushing Bores

Table No. 3

Bushing	Bore Range
P1	1/2 - 1 3/4"
Q1	3/4 - 2 11/16"
Q2	1 - 2 5/8"
R1	1 1/8 - 3 3/4"
R2	1 3/8 - 3 5/8"
S1	1 11/16 - 4 1/4"
S2	1 7/8 - 4 3/16"
U0	2 3/8 - 5 1/2"
U1	2 3/8 - 5 1/2"

Table No. 4 "5V" Companion Sheaves

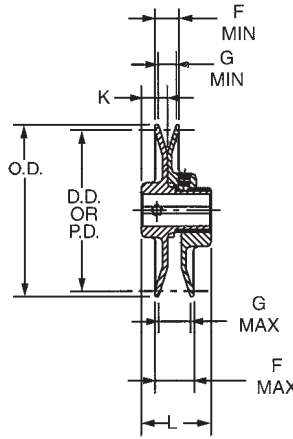
Pitch Dia. "5V"	3 Grooves	4 Grooves	5 Grooves	6 Grooves	8 Grooves	10 Grooves
	Page C - 20	Page C - 20	Page C - 21	Page C - 21	Page C - 22	Page C - 22
7.9"	3MV5V80R(R1)	4MV5V80R(R1)	5MV5V80R(R2)	6MV5V80R(R2)	—	—
8.4	3MV5V85R(R1)	4MV5V85R(R1)	5MV5V85R(R2)	6MV5V85R(R2)	—	—
8.9	3MV5V90R(R1)	4MV5V90R(R1)	5MV5V90R(R2)	6MV5V90R(R2)	8MV5V90S(S2)	10MV5V90S(S2)
9.15	3MV5V92R(R1)	4MV5V92R(R1)	5MV5V92R(R2)	6MV5V92R(R2)	8MV5V92S(S2)	10MV5V92S(S2)
9.65	3MV5V97R(R1)	4MV5V97R(R1)	5MV5V97R(R2)	6MV5V97R(R2)	8MV5V97S(S2)	10MV5V97S(S2)
10.2	3MV5V103R(R1)	4MV5V103R(R1)	5MV5V103R(R2)	6MV5V103R(R2)	8MV5V103S(S2)	10MV5V103S(S2)
10.8	3MV5V109R(R1)	4MV5V109R(R1)	5MV5V109R(R2)	6MV5V109R(R2)	8MV5V109S(S2)	10MV5V109S(S2)
11.7	3MV5V118R(R1)	4MV5V118R(R1)	5MV5V118S(S1)	6MV5V118S(S1)	8MV5V118S(S2)	10MV5V118S(S2)
12.4	3MV5V125R(R1)	4MV5V125R(R1)	5MV5V125S(S1)	6MV5V125S(S1)	8MV5V125S(S2)	10MV5V125U(U1)
13.1	3MV5V132R(R1)	4MV5V132R(R1)	5MV5V132S(S1)	6MV5V132S(S1)	8MV5V132S(S2)	10MV5V132U(U1)
13.9	3MV5V140R(R1)	4MV5V140R(R1)	5MV5V140S(S1)	6MV5V140S(S1)	8MV5V140S(S2)	10MV5V140U(U1)
14.9	3MV5V150R(R1)	4MV5V150R(R1)	5MV5V150S(S1)	6MV5V150S(S1)	8MV5V150S(S2)	10MV5V150U(U1)
15.9	3MV5V160R(R1)	4MV5V160R(R1)	5MV5V160S(S1)	6MV5V160S(S1)	8MV5V160S(S2)	10MV5V160U(U1)
17.9	3MV5V180R(R1)	4MV5V180R(R1)	5MV5V180S(S1)	6MV5V180S(S2)	8MV5V180S(S2)	10MV5V180U(U1)
19.9	3MV5V200R(R1)	4MV5V200R(R1)	5MV5V200S(S1)	6MV5V200S(S2)	8MV5V200U(U0)	10MV5V200U(U1)
21.1	3MV5V212S(S1)	4MV5V212S(S1)	5MV5V212U(U0)	6MV5V212U(U0)	8MV5V212U(U1)	10MV5V212U(U1)
23.9	3MV5V240S(S1)	4MV5V240S(S1)	5MV5V240U(U0)	6MV5V240U(U0)	8MV5V240U(U0)	10MV5V240U(U1)
27.9	3MV5V280S(S1)	4MV5V280S(S1)	5MV5V280U(U0)	6MV5V280U(U0)	8MV5V280U(U1)	10MV5V280U(U1)
29.9	3MV5V300S(S1)	4MV5V300S(S1)	5MV5V300U(U0)	6MV5V300U(U0)	8MV5V300U(U1)	10MV5V300U(U1)
37.4	3MV5V375U(U0)	4MV5V375S(S1)	5MV5V375U(U0)	6MV5V375U(U1)	8MV5V375U(U1)	10MV5V375U(U1)
43.9	3MV5V440U(U0)	4MV5V440U(U0)	5MV5V440U(U0)	6MV5V440U(U1)	8MV5V440U(U1)	10MV5V440U(U1)
49.9	3MV5V500U(U0)	4MV5V500U(U0)	5MV5V500U(U0)	6MV5V500U(U1)	8MV5V500U(U1)	10MV5V500U(U1)

Bushing Number is shown in parenthesis after Sheave Part Number

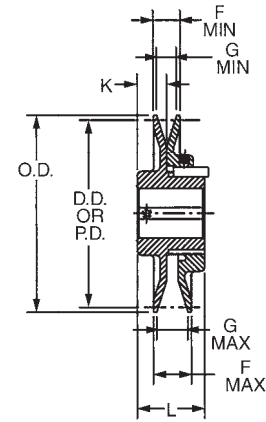
Single Groove Variable Pitch Sheaves for "3L", "4L", "5L", "A", "B" and "5V" Belts



VORTEX™
DESIGN



Type 1



Type 2

Dimensions (Inches)

Part No.	Type	DIMENSIONS (Inches)								Wt. Lbs.
		O.D.	F		G		L	K		
			Max.	Min.	Max.	Min.				
1VP25	1	2.50	25/32	17/32	5/8	3/8	1 11/16	49/64	.8	
1VP30	1	2.87	25/32	17/32	5/8	3/8	1 11/16	49/64	.9	
1VP34	1	3.15	1	21/32	13/16	1/2	1 7/8	49/64	1.2	
1VP40	1	3.75	1 1/32	21/32	7/8	1/2	1 7/8	49/64	1.7	
1VP44	1	4.15	1 1/32	21/32	7/8	1/2	1 7/8	49/64	1.9	
1VP44	2	4.15	1 1/8	3/4	7/8	1/2	2 5/32	29/32	2.6	
1VP50	1	4.75	1 1/16	11/16	7/8	1/2	1 15/16	29/32	1.9	
1VP50	2	4.75	1 1/8	3/4	7/8	1/2	2 5/32	29/32	2.9	
1VP56	1	5.35	1 1/16	11/16	7/8	1/2	1 15/16	29/32	2.7	
1VP56	2	5.35	1 1/8	3/4	7/8	1/2	2 5/32	29/32	3.4	
1VP60	2	6.00	1 1/4	7/8	1 1/32	21/32	2 7/32	31/32	5.5	
1VP62	2	5.95	1 1/4	7/8	1 1/32	21/32	2 7/32	31/32	5.7	
1VP65	2	6.50	1 1/4	7/8	1 1/32	21/32	2 7/32	31/32	5.8	
1VP68	2	6.55	1 1/4	7/8	1 1/32	21/32	2 7/32	31/32	6.4	
1VP71	2	7.10	1 1/4	7/8	1 1/32	21/32	2 7/32	31/32	6.8	
1VP75	2	7.50	1 1/4	7/8	1 1/32	21/32	2 7/32	31/32	7.3	

Stock Sizes - Finished Bore (Inches)

Part No.	Type	DIAMETER RANGE																Stock Bores Marked "x"									
		"3L" BELTS				"4L" or "A" BELTS				"5L" or "B" BELTS				"5V" BELTS				1/2	5/8	3/4	7/8	1	1 1/8	1 1/4	1 3/8	1 5/8	
		Min. Pitch	Turns Open	Max. Pitch	Turns Open	Min. Datum	Turns Open	Max. Datum	Turns Open	Min. Datum	Turns Open	Max. Datum	Turns Open	Min. Pitch	Turns Open	Max. Pitch	Turns Open										
1VP25	1	1.6	4	2.4	0	-	-	-	-	-	-	-	-	-	-	-	-	x	-	-	-	-	-	-	-	-	-
1VP30	1	1.8	4	2.7	0	-	-	-	-	-	-	-	-	-	-	-	-	x	x	x	-	-	-	-	-	-	-
1VP34	1	1.7	4	2.5	0	1.9	5	2.9	0	2.4	5	3.2	1	-	-	-	-	x	x	x	x	-	-	-	-	-	-
1VP40	1	2.3	4	3.1	0	2.4	5	3.4	0	2.7	6	3.7	1	-	-	-	-	x	x	x	x	-	-	-	-	-	-
1VP44	1	2.7	4	3.5	0	2.8	5	3.8	0	3.1	6	4.1	1	-	-	-	-	x	x	x	x	-	-	-	-	-	-
1VP44	2	2.7	4	3.5	0	2.8	5	3.8	0	3.1	6	4.1	1	-	-	-	-	-	-	x	x	x	-	-	-	-	-
1VP50	1	3.3	4	4.1	0	3.4	5	4.4	0	3.7	6	4.7	1	-	-	-	-	x	x	x	-	-	-	-	-	-	-
1VP50	2	3.3	4	4.1	0	3.4	5	4.4	0	3.7	6	4.7	1	-	-	-	-	-	-	x	x	x	-	-	-	-	-
1VP56	1	3.9	4	4.7	0	4.0	5	5.0	0	4.3	6	5.3	1	-	-	-	-	x	x	x	-	-	-	-	-	-	-
1VP56	2	3.9	4	4.7	0	4.0	5	5.0	0	4.3	6	5.3	1	-	-	-	-	-	-	x	x	x	-	-	-	-	-
1VP60	2	-	-	-	-	4.2	5	5.2	0	4.3	6	5.5	0	4.7	6	5.9	0	-	-	x	x	x	-	x	-	x	x
1VP62	2	-	-	-	-	4.2	5	5.2	0	4.3	6	5.5	0	4.7	6	5.9	0	-	x	x	x	x	x	x	x	-	-
1VP65	2	-	-	-	-	4.7	5	5.7	0	4.8	6	6.0	0	5.2	6	6.4	0	-	-	x	x	x	-	x	-	x	x
1VP68	2	-	-	-	-	4.7	5	5.7	0	4.8	6	6.0	0	5.2	6	6.4	0	-	x	x	x	x	x	x	x	-	-
1VP71	2	-	-	-	-	5.3	5	6.3	0	5.4	6	6.6	0	5.8	6	7.0	0	-	-	x	x	-	x	-	x	x	-
1VP75	2	-	-	-	-	5.7	5	6.7	0	5.8	6	7.0	0	6.2	6	7.4	0	-	-	x	x	-	x	-	x	x	-

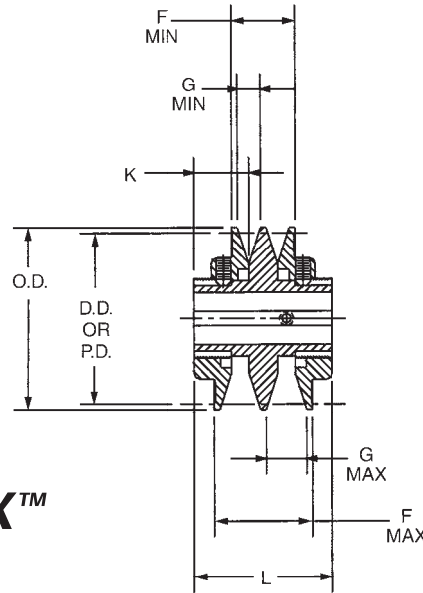
All fitted with Hollow Head Setscrews.

Any standard Browning Sheave can be used as a Companion Sheave.

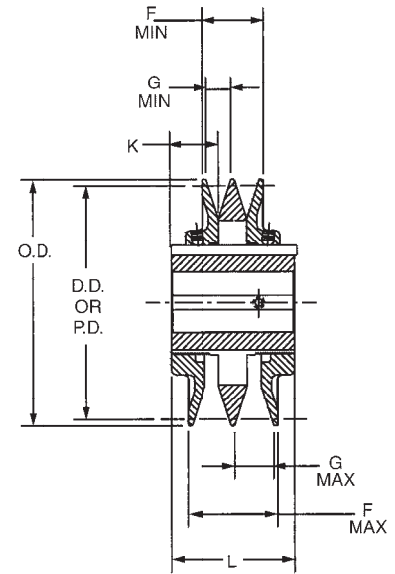
Two Groove Variable Pitch Sheaves for "3L", "4L", "5L", "A", "B" and "5V" Belts



VORTEX™
DESIGN



Type 4



Type 5

Dimensions (Inches)

Part No.	Type	DIMENSIONS (Inches)							
		O.D.	F		G		L	K	Wt. Lbs.
			Max.	Min.	Max.	Min.			
2VP36	4	3.35	2	1 3/8	13/16	1/2	3	1 3/16	2.6
2VP42	4	3.95	2 1/8	1 3/8	7/8	1/2	3	1 3/16	3.5
2VP50	5	4.75	2 1/8	1 3/8	7/8	1/2	3	1 3/16	5.4
2VP56	5	5.35	2 1/8	1 3/8	7/8	1/2	3	1 3/16	6.6
2VP60	5	6.00	2 3/8	1 5/8	1 1/32	21/32	3 1/4	1 1/4	10.2
2VP62	5	5.95	2 3/8	1 5/8	1 1/32	21/32	3 1/4	1 1/4	10.5
2VP65	5	6.50	2 3/8	1 5/8	1 1/32	21/32	3 1/4	1 1/4	11.6
2VP68	5	6.55	2 3/8	1 5/8	1 1/32	21/32	3 1/4	1 1/4	12.3
2VP71	5	7.10	2 3/8	1 5/8	1 1/32	21/32	3 1/4	1 1/4	13.4
2VP75	5	7.50	2 3/8	1 5/8	1 1/32	21/32	3 1/4	1 1/4	15.5

Stock Sizes - Finished Bore (Inches)

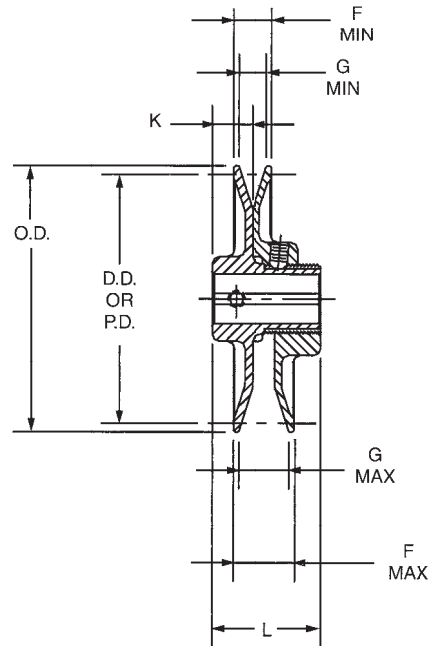
Part No.	Type	DIAMETER RANGE																Stock Bores Marked "x"								
		"3L" BELTS				"4L" or "A" BELTS				"5L" or "B" BELTS				"5V" BELTS				1/2	5/8	3/4	7/8	1	1 1/8	1 1/4	1 3/8	1 5/8
		Min. Pitch	Turns	Max. Pitch	Turns	Min. Datum	Turns	Max. Datum	Turns	Min. Datum	Turns	Max. Datum	Turns	Min. Pitch	Turns	Max. Pitch	Turns									
2VP36	4	1.9	4	2.7	0	2.0	5	3.0	0	2.5	5	3.3	1	-	-	-	-	x	x	x	x	-	-	-	-	-
2VP42	4	2.5	4	3.3	0	2.6	5	3.6	0	2.9	6	3.9	1	-	-	-	-	-	x	x	x	x	x	-	-	-
2VP50	5	3.3	4	4.1	0	3.4	5	4.4	0	3.7	6	4.7	1	-	-	-	-	-	x	x	x	x	x	-	-	-
2VP56	5	3.9	4	4.7	0	4.0	5	5.0	0	4.3	6	5.3	1	-	-	-	-	-	x	x	x	x	x	-	-	-
2VP60	5	-	-	-	-	4.2	5	5.2	0	4.3	6	5.5	0	4.7	6	5.9	0	-	-	x	x	-	x	-	x	x
2VP62	5	-	-	-	-	4.2	5	5.2	0	4.3	6	5.5	0	4.7	6	5.9	0	-	-	x	x	x	x	x	x	-
2VP65	5	-	-	-	-	4.7	5	5.7	0	4.8	6	6.0	0	5.2	6	6.4	0	-	-	x	x	-	x	-	x	x
2VP68	5	-	-	-	-	4.7	5	5.7	0	4.8	6	6.0	0	5.2	6	6.4	0	-	-	-	x	x	x	x	-	-
2VP71	5	-	-	-	-	5.3	5	6.3	0	5.4	6	6.6	0	5.8	6	7.0	0	-	-	x	x	-	x	-	x	x
2VP75	5	-	-	-	-	5.7	5	6.7	0	5.8	6	7.0	0	6.2	6	7.4	0	-	-	x	x	-	x	-	x	x

All fitted with Hollow Head Setscrews.

Any standard two groove Browning Sheave can be used as a Companion Sheave.



VORTEX™
DESIGN



“VL” and “VM” Sheaves are furnished with Standard Keyseats and Hollow Head Setscrew and packaged 20 pieces per carton.

Stock “VL” and “VM” Variable Pitch Sheaves

Part No.	DIMENSIONS (Inches)							
	O.D.	F		G		L	K	Wt. Lbs.
		Max.	Min.	Max.	Min.			
1VL25	2.50	25/32	17/32	5/8	3/8	1 11/16	49/64	.8
1VL30	2.87	25/32	17/32	5/8	3/8	1 11/16	49/64	.9
1VL34	3.15	31/32	21/32	13/16	1/2	1 7/8	49/64	1.2
1VL40	3.75	1 1/32	21/32	7/8	1/2	1 7/8	49/64	1.7
1VL44	4.15	1 1/32	21/32	7/8	1/2	1 7/8	49/64	1.9
1VM50	4.75	1 1/16	11/16	7/8	1/2	1 15/16	23/32	1.9

Stock Sizes - Finished Bore (Inches)

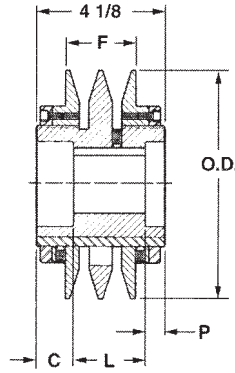
Part No.	DIAMETER RANGE												Stock Bores Marked “x”			
	“3L” BELTS				“4L” or “A” BELTS				“5L” or “B” BELTS				1/2	5/8	3/4	7/8
	Min. Pitch	Turns Open	Max. Pitch	Turns Open	Min. Datum	Turns Open	Max. Datum	Turns Open	Min. Datum	Turns Open	Max. Datum	Turns Open				
1VL25	1.6	4	2.4	0	-	-	-	-	-	-	-	-	x	x	-	-
1VL30	1.8	4	2.7	0	-	-	-	-	-	-	-	-	x	x	-	-
1VL34	1.7	4	2.5	0	1.9	5	2.9	0	2.4	5	3.2	1	x	x	x	-
1VL40	2.3	4	3.1	0	2.4	5	3.4	0	2.7	6	3.7	1	x	x	x	x
1VL44	2.7	4	3.5	0	2.8	5	3.8	0	3.1	6	4.1	1	x	x	x	x
1VM50	3.3	4	4.1	0	3.4	5	4.4	0	3.7	6	4.7	1	x	x	x	x

Standard Keyseats

Bore Range	Keyseat
3/4 to 7/8	3/16 x 3/32
15/16 to 1 1/4	1/4 x 1/8
1 5/16 to 1 3/8*	5/16 x 5/32
1 7/16 to 1 3/4	3/8 x 3/16

**Low Priced, High Production
Cast Iron Sheaves
For Any Light Application**

Two Groove Variable Speed Sheaves for "A", "B" and "5V" Belts

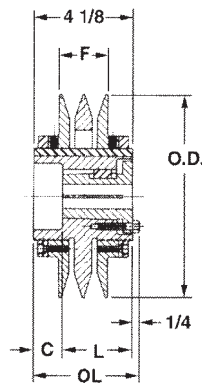


Type 5

- Patented Locking Ring Type
- Positive Locking
- Malleable Collars
- Movable Flanges Keyed to Hub
- Machined on All Surfaces.
- Statically Balanced
- Rugged Design for 5-30 HP Motors

Specifications - FINISHED BORE SHEAVES

Part Number	Type	O.D.	Pitch or Datum Diameter Range												F		L	P	Stock Bores Marked "x"				Wt. Lbs.
			"A" BELTS				"B" BELTS				"5V" BELTS								7/8	1 1/16	1 3/8	1 7/8	
			Min. D.D.	Turns Open	Max. D.D.	Turns Open	Min. D.D.	Turns Open	Max. D.D.	Turns Open	Min. P.D.	Turns Open	Max. P.D.	Turns Open	Max.	Min.							
2V58B70	5	7.50	5.7	5	6.7	0	5.8	6	7.0	0	6.2	6	7.4	0	2 3/8	1 5/8	2 3/8	5/8	-	-	-	X	20.0
2V68B80	5	8.50	6.7	5	7.7	0	6.8	6	8.0	0	7.2	6	8.4	0	2 3/8	1 5/8	2 3/8	5/8	-	-	-	X	25.0



Type 6

Specifications - BUSHING BORE SHEAVES

Part Number	Bush ing	Type	O.D.	Pitch or Datum Diameter Range												OL	F		L	P	C	H	Wt. Lbs. Less Bush
				"A" BELTS				"B" BELTS				"5V" BELTS					Max.	Min.					
				Min. D.D.	Turns Open	Max. D.D.	Turns Open	Min. D.D.	Turns Open	Max. D.D.	Turns Open	Min. P.D.	Turns Open	Max. P.D.	Turns Open	Max.	Min.						
2V58B70P	P2	6	7.5	5.7	5	6.7	0	5.8	6	7.0	0	6.2	6	7.4	0	4 3/8	2 3/8	1 5/8	2 15/16	-	1 3/16	-	20.0
2V68B80P	P2	6	8.5	6.7	5	7.7	0	6.8	6	8.0	0	7.2	6	8.4	0	4 3/8	2 3/8	1 5/8	2 15/16	-	1 3/16	-	25.5

STOCK FINISHED BORE MVP® SHEAVES FOR "A" and "B" BELTS U. S. Patent No. 5,304,098 DYNAMICALLY BALANCED

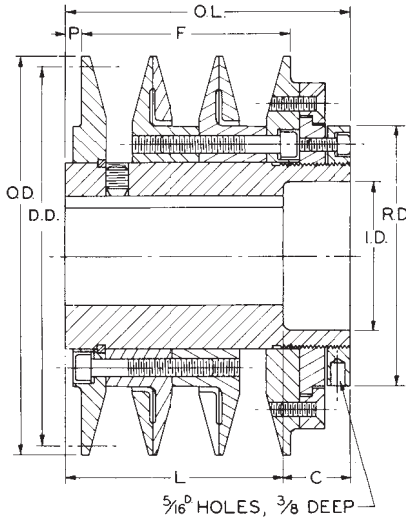


Table No. 1

"L" and "C" Dimensions

No. Grooves	Max Datum	BORE											
		7/8"		1 1/8"		1 3/8"		1 5/8"		1 7/8"		2 1/8"	
		L	C	L	C	L	C	L	C	L	C	L	C
2	4.9"	2"	1 5/8"	2 1/2"	1 1/8"	3 1/8"	1/2"	—	—	—	—	—	—
	5.4, 5.9, 6.4, 6.9	—	—	2 1/2"	1 1/8"	3 1/8"	1/2"	3 5/8"	0	—	—	—	—
	4.9	—	—	2 1/2"	2 1/4"	3 1/8"	1 5/8"	—	—	—	—	—	—
	5.4, 5.9, 6.4, 6.9, 7.4, 8.4	—	—	2 1/2"	2 1/4"	3 1/8"	1 5/8"	3 3/4"	1	4 3/8"	3/8"	—	—
3	4.9	—	—	2 1/2"	3 3/8"	3 1/8"	2 3/4"	—	—	—	—	—	—
	5.4, 5.9, 6.4, 6.9, 7.4, 8.4	—	—	2 1/2"	3 3/8"	3 1/8"	2 3/4"	3 3/4"	2 1/8"	4 3/8"	1 1/2"	—	—
	4.9	—	—	—	—	3 1/8"	3 7/8"	—	—	—	—	—	—
	5.4, 5.9, 6.4, 6.9, 7.4, 8.4	—	—	—	—	3 1/8"	3 7/8"	3 3/4"	3 1/4"	4 3/8"	2 5/8"	—	—
4	4.9	—	—	—	—	3 1/2"	4 5/8"	—	—	—	—	—	—
	5.4, 5.9, 6.4, 6.9, 7.4, 8.4	—	—	—	—	3 1/2"	4 5/8"	3 3/4"	4 3/8"	4 3/8"	3 3/4"	—	—
	4.9	—	—	—	—	—	—	—	—	4 5/16"	2 11/16"	4 5/16"	2 11/16"
	5.4, 5.9, 6.4, 6.9, 7.4, 8.4	—	—	—	—	—	—	—	—	4 5/16"	2 11/16"	4 5/16"	2 11/16"
5	4.9	—	—	—	—	—	—	—	—	—	—	—	—
	5.4, 5.9, 6.4, 6.9, 7.4, 8.4	—	—	—	—	—	—	—	—	—	—	—	—
	4.9	—	—	—	—	—	—	—	—	—	—	—	—
	5.4, 5.9, 6.4, 6.9, 7.4, 8.4	—	—	—	—	—	—	—	—	—	—	—	—
6	4.9	—	—	—	—	—	—	—	—	—	—	—	—
	5.4, 5.9, 6.4, 6.9, 7.4, 8.4	—	—	—	—	—	—	—	—	—	—	—	—
	4.9	—	—	—	—	—	—	—	—	—	—	—	—
	5.4, 5.9, 6.4, 6.9, 7.4, 8.4	—	—	—	—	—	—	—	—	—	—	—	—

Dimensions shown above are for Sheaves with Number of Grooves, Maximum D.D. and Bore indicated; for example, a 2MVP45B59 x 1 3/8" has a 3 1/8" "L" Dimension and a 1/2" "C" Dimension.

Table No. 2

Specifications

Diameters					Part Number	Dimensions			Stock Bores Marked "X"							Wt. Lbs.	
Datum Range		Out-side	In-side	Ring (R.D.)		O.L.	F		P	7/8"	1 1/8"	1 3/8"	1 5/8"	1 7/8"	2 1/8"		2 3/8"
"A" Belts	"B" Belts						Max.	Min.									
2 GROOVES																	
3.4" - 4.5"	3.5" - 4.9"	5.18"	1 3/8"	3 5/16"	2MVP35B49	3 5/8"	2 5/16"	1 15/16"	1/4"	x	x	x	-	-	-	-	9.8
3.9 - 5.0	4.0 - 5.4	5.68	1 7/8	3 13/16	2MVP40B54	3 5/8	2 5/16	1 15/16	1/4	-	x	x	x	-	-	-	12.5
4.4 - 5.5	4.5 - 5.9	6.18	1 7/8	3 13/16	2MVP45B59	3 5/8	2 5/16	1 15/16	1/4	-	x	x	x	-	-	-	14.3
4.9 - 6.0	5.0 - 6.4	6.68	2 3/8	4 3/8	2MVP50B64	3 5/8	2 5/16	1 15/16	1/4	-	x	x	x	-	-	-	18.1
5.4 - 6.5	5.5 - 6.9	7.18	2 3/8	4 3/8	2MVP55B69	3 5/8	2 5/16	1 15/16	1/4	-	x	x	x	-	-	-	19.8
3 GROOVES																	
3.4" - 4.5"	3.5" - 4.9"	5.18"	1 3/8"	3 5/16"	3MVP35B49	4 3/4"	3 7/16"	3 1/16"	1/4"	-	x	x	-	-	-	-	12.5
3.9 - 5.0	4.0 - 5.4	5.68	1 7/8	3 13/16	3MVP40B54	4 3/4	3 7/16	3 1/16	1/4	-	x	x	x	-	-	-	16.3
4.4 - 5.5	4.5 - 5.9	6.18	1 7/8	3 13/16	3MVP45B59	4 3/4	3 7/16	3 1/16	1/4	-	x	x	x	-	-	-	18.3
4.9 - 6.0	5.0 - 6.4	6.68	2 3/8	4 3/8	3MVP50B64	4 3/4	3 7/16	3 1/16	1/4	-	x	x	x	-	-	-	22.9
5.4 - 6.5	5.5 - 6.9	7.18	2 3/8	4 3/8	3MVP55B69	4 3/4	3 7/16	3 1/16	1/4	-	x	x	x	-	-	-	24.5
5.9 - 7.0	6.0 - 7.4	7.68	3 5/16	5 3/8	3MVP60B74	4 3/4	3 7/16	3 1/16	1/4	●	●	●	●	x	-	-	29.3
6.9 - 8.0	7.0 - 8.4	8.68	3 5/16	5 3/8	3MVP70B84	4 3/4	3 7/16	3 1/16	1/4	●	●	●	●	x	-	-	36.8
4 GROOVES																	
3.4" - 4.5"	3.5" - 4.9"	5.18"	1 3/8"	3 5/16"	4MVP35B49	5 7/8"	4 9/16"	4 3/16"	1/4"	-	x	x	-	-	-	-	15.0
3.9 - 5.0	4.0 - 5.4	5.68	1 7/8	3 13/16	4MVP40B54	5 7/8	4 9/16	4 3/16	1/4	-	x	x	x	-	-	-	20.5
4.4 - 5.5	4.5 - 5.9	6.18	1 7/8	3 13/16	4MVP45B59	5 7/8	4 9/16	4 3/16	1/4	-	x	x	x	-	-	-	22.8
4.9 - 6.0	5.0 - 6.4	6.68	2 3/8	4 3/8	4MVP50B64	5 7/8	4 9/16	4 3/16	1/4	-	x	x	x	-	-	-	29.8
5.4 - 6.5	5.5 - 6.9	7.18	2 3/8	4 3/8	4MVP55B69	5 7/8	4 9/16	4 3/16	1/4	-	x	x	x	-	-	-	31.1
5.9 - 7.0	6.0 - 7.4	7.68	3 5/16	5 3/8	4MVP60B74	5 7/8	4 9/16	4 3/16	1/4	-	●	●	●	x	-	-	38.8
6.9 - 8.0	7.0 - 8.4	8.68	3 5/16	5 3/8	4MVP70B84	5 7/8	4 9/16	4 3/16	1/4	-	●	●	●	x	x	-	47.0
5 GROOVES																	
3.4" - 4.5"	3.5" - 4.9"	5.18"	0	3 5/16"	5MVP35B49	7"	5 11/16"	5 5/16"	1/4"	-	-	x	-	-	-	-	18.3
3.9 - 5.0	4.0 - 5.4	5.68	1 7/8"	3 13/16	5MVP40B54	7	5 11/16	5 5/16	1/4	-	-	x	x	-	-	-	23.9
4.4 - 5.5	4.5 - 5.9	6.18	1 7/8"	3 13/16	5MVP45B59	7	5 11/16	5 5/16	1/4	-	-	x	x	-	-	-	26.3
4.9 - 6.0	5.0 - 6.4	6.68	2 3/8	4 3/8	5MVP50B64	7	5 11/16	5 5/16	1/4	-	-	-	x	x	-	-	35.3
5.4 - 6.5	5.5 - 6.9	7.18	2 3/8	4 3/8	5MVP55B69	7	5 11/16	5 5/16	1/4	-	-	-	x	x	-	-	40.1
5.9 - 7.0	6.0 - 7.4	7.68	3 5/16	5 3/8	5MVP60B74	7	5 11/16	5 5/16	1/4	-	●	●	●	x	x	-	44.1
6.9 - 8.0	7.0 - 8.4	8.68	3 5/16	5 3/8	5MVP70B84	7	5 11/16	5 5/16	1/4	-	●	●	●	x	x	-	53.0
6 GROOVES																	
3.9 - 5.0	4.0 - 5.4	5.68	1 7/8"	3 13/16	6MVP40B54	8 1/8	6 13/16	6 7/16	1/4	-	-	-	x	x	-	-	27.0
4.4 - 5.5	4.5 - 5.9	6.18	1 7/8"	3 13/16	6MVP45B59	8 1/8	6 13/16	6 7/16	1/4	-	-	-	x	x	-	-	32.3
4.9 - 6.0	5.0 - 6.4	6.68	2 3/8	4 3/8	6MVP50B64	8 1/8	6 13/16	6 7/16	1/4	-	-	-	-	x	x	-	38.1
5.4 - 6.5	5.5 - 6.9	7.18	2 3/8	4 3/8	6MVP55B69	8 1/8	6 13/16	6 7/16	1/4	-	-	-	-	x	x	-	42.0
5.9 - 7.0	6.0 - 7.4	7.68	3 5/16	4 3/8	6MVP60B74	8 1/8	6 13/16	6 7/16	1/4	-	●	●	●	x	x	-	50.0
6.9 - 8.0	7.0 - 8.4	8.68	3 5/16	4 3/8	6MVP70B84	8 1/8	6 13/16	6 7/16	1/4	-	●	●	●	x	x	x	61.0

Standard Keyseats

Table No. 3

Bore Range	Keyseat
7/8"	3/16" x 3/32"
1 1/8"	1/4 x 1/8
1 3/8"	5/16 x 5/32
1 5/8"	3/8 x 3/16
1 7/8, 2 1/8"	1/2 x 1/4

● See Bushed type sheaves on next page

Browning Finished Bore MVP® Sheaves are furnished with standard keyseats and two hollow head setscrews. Datum Diameter is infinitely adjustable within the datum range, .233" change per turn of the adjusting ring.

STOCK BUSHED TYPE MVP® SHEAVES FOR "A" and "B" BELTS

U. S. Patent No. 5,304,098
DYNAMICALLY BALANCED

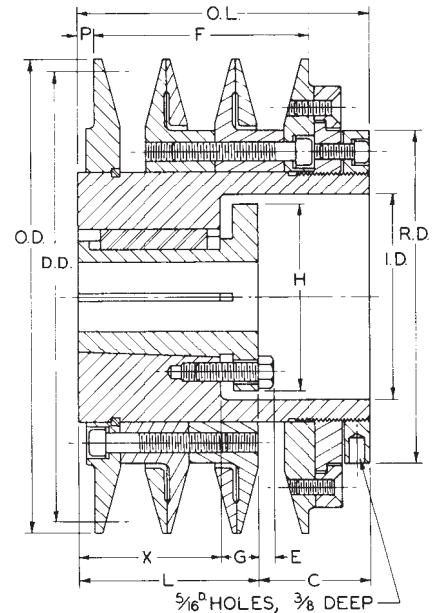


Table No. 1

Specifications

DIAMETERS			PART NUMBER		DIMENSIONS											Wt. Less Bush.	
Datum Range		Out-side	In-side	Ring (R.D.)	Sheave	Bush-ing	O.L.	F		L	C	H	G	X	P		E
"A" Belts	"B" Belts							Max.	Min.								
2 GROOVES																	
5.9" - 7.0"	6.0" - 7.4"	7.68"	3 5/16"	5 3/8"	2MVP60B74P	P2	3 5/8"	2 5/16"	1 15/16"	2 15/16"	11/16"	3"	5/8"	2 5/16"	1/4"	1/4"	23.5
6.9 - 8.0	7.0 - 8.4	8.68	3 5/16"	5 3/8"	2MVP70B84P	P2	3 5/8"	2 5/16"	1 15/16"	2 15/16"	11/16"	3"	5/8"	2 5/16"	1/4"	1/4"	28.1
7.9 - 9.0	8.0 - 9.4	9.68	4 7/16"	6 1/2"	2MVP80B94Q	Q2	3 5/8"	2 5/16"	1 15/16"	3 1/2"	1/8"	4 1/8"	3/4"	2 3/4"	1/4"	9/32"	36.1
3 GROOVES																	
5.9" - 7.0"	6.0" - 7.4"	7.68"	3 5/16"	5 3/8"	3MVP60B74P	P2	4 3/4"	3 7/16"	3 1/16"	2 15/16"	1 13/16"	3"	5/8"	2 5/16"	1/4"	1/4"	29.5
6.9 - 8.0	7.0 - 8.4	8.68	3 5/16"	5 3/8"	3MVP70B84P	P2	4 3/4"	3 7/16"	3 1/16"	2 15/16"	1 13/16"	3"	5/8"	2 5/16"	1/4"	1/4"	35.9
7.9 - 9.0	8.0 - 9.4	9.68	4 7/16"	6 1/2"	3MVP80B94Q	Q2	4 3/4"	3 7/16"	3 1/16"	3 1/2"	1 1/4"	4 1/8"	3/4"	2 3/4"	1/4"	9/32"	45.5
4 GROOVES																	
5.9" - 7.0"	6.0" - 7.4"	7.68"	3 5/16"	5 3/8"	4MVP60B74P	P3	5 7/8"	4 9/16"	4 3/16"	4 7/16"	1 7/16"	3"	5/8"	3 13/16"	1/4"	1/4"	37.8
6.9 - 8.0	7.0 - 8.4	8.68	3 5/16"	5 3/8"	4MVP70B84P	P3	5 7/8"	4 9/16"	4 3/16"	4 7/16"	1 7/16"	3"	5/8"	3 13/16"	1/4"	1/4"	46.4
7.9 - 9.0	8.0 - 9.4	9.68	4 7/16"	6 1/2"	4MVP80B94Q	Q2	5 7/8"	4 9/16"	4 3/16"	3 1/2"	2 3/8"	4 1/8"	3/4"	2 3/4"	1/4"	9/32"	54.5
5 GROOVES																	
5.9" - 7.0"	6.0" - 7.4"	7.68"	3 5/16"	5 3/8"	5MVP60B74P	P3	7"	5 11/16"	5 5/16"	4 7/16"	2 9/16"	3"	5/8"	3 13/16"	1/4"	1/4"	42.6
6.9 - 8.0	7.0 - 8.4	8.68	3 5/16"	5 3/8"	5MVP70B84P	P3	7"	5 11/16"	5 5/16"	4 7/16"	2 9/16"	3"	5/8"	3 13/16"	1/4"	1/4"	52.5
7.9 - 9.0	8.0 - 9.4	9.68	4 7/16"	6 1/2"	5MVP80B94Q	Q3	7"	5 11/16"	5 5/16"	5"	2"	4 1/8"	3/4"	4 1/4"	1/4"	9/32"	66.5
6 GROOVES																	
5.9" - 7.0"	6.0" - 7.4"	7.68"	3 5/16"	5 3/8"	6MVP60B74P	P3	8 1/8"	6 13/16"	6 7/16"	4 7/16"	3 11/16"	3"	5/8"	3 13/16"	1/4"	1/4"	50.0
6.9 - 8.0	7.0 - 8.4	8.68	3 5/16"	5 3/8"	6MVP70B84P	P3	8 1/8"	6 13/16"	6 7/16"	4 7/16"	3 11/16"	3"	5/8"	3 13/16"	1/4"	1/4"	61.0
7.9 - 9.0	8.0 - 9.4	9.68	4 7/16"	6 1/2"	6MVP80B94Q	Q3	8 1/8"	6 13/16"	6 7/16"	5"	3 1/8"	4 1/8"	3/4"	4 1/4"	1/4"	9/32"	76.5

Datum diameter is infinitely adjustable within the range, .233" change per turn of the adjusting ring.

Bushing Bores

Table No. 2

Bushing No.	Bore Range
P2	3/4" - 1 3/4"
P3	1 1/8" - 1 5/8"
Q2	1 - 2 5/8"
Q3	1 3/8" - 2 1/2"

Standard Keyseats

Table No. 3

Bore Range	Keyseat
3/4" - 7/8"	3/16" x 3/32"
15/16 - 1 1/4"	1/4 x 1/8
1 5/16 - 1 3/8"	5/16 x 5/32
1 7/16 - 1 3/4"	3/8 x 3/16
1 13/16 - 2 1/4"	1/2 x 1/4
2 5/16 - 2 5/8"	5/8 x 5/16

1 3/8" Bore Bushing (Except P3 and Q3)
are available with 3/8" x 3/16" Keyseat.

STOCK COMPANION SHEAVES for "A" and "B" BELTS

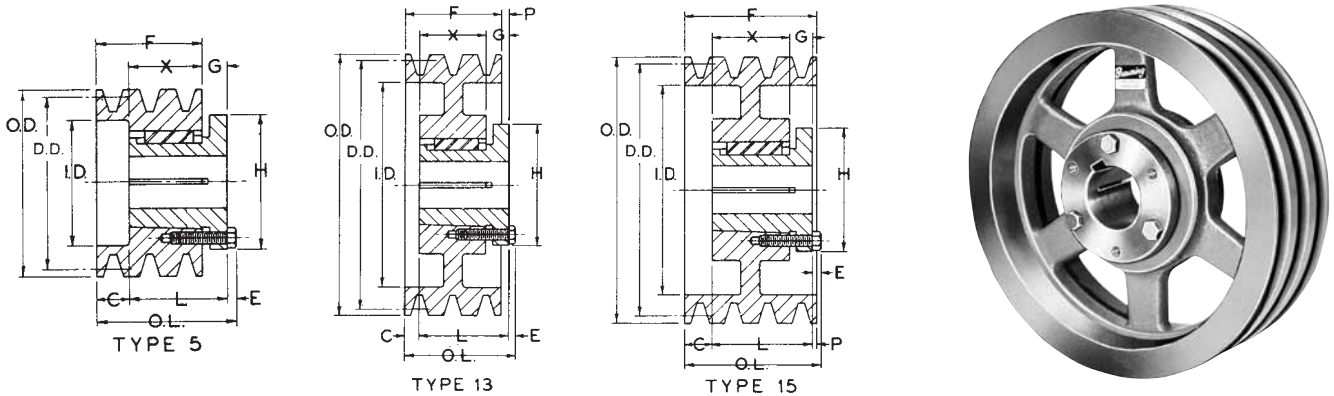


Table No. 1

Specifications

DIAMETERS				PART NUMBER		Type	DIMENSIONS								Wt. Less Bush.
Datum "A"	Datum "B"	Outside	Inside	Sheave	Bushing		O.L.	L	P	C	H	G	X	E	
3 GROOVES, F = 3 1/4"															
4.6"	5.0"	5.35"	3 1/2"	3MVB50P	P1	15-Web	3 1/2"	1 15/16"	0	1 5/16"	3"	5/8"	1 5/16"	1/4"	9.8
5.0	5.4	5.75	3 7/8	3MVB54P	P1	15-Web	3 1/2	1 15/16	0	1 5/16	3	5/8	1 5/16	1/4	11.3
5.6	6.0	6.35	4 1/2	3MVB60P	P1	15-Web	3 1/2	1 15/16	0	1 5/16	3	5/8	1 5/16	1/4	13.8
6.0	6.4	6.75	4 7/8	3MVB64P	P1	15-Web	3 1/2	1 15/16	0	1 5/16	3	5/8	1 5/16	1/4	13.6
6.6	7.0	7.35	5 1/2	3MVB70Q	Q1	15-Web	3 17/32	2 1/2	0	3/4	4 1/8	3/4	1 3/4	9/32	16.8
7.0	7.4	7.75	5 15/16	3MVB74Q	Q1	15-Web	3 17/32	2 1/2	0	3/4	4 1/8	3/4	1 3/4	9/32	16.8
7.6	8.0	8.35	6 1/2	3MVB80Q	Q1	15-Web	3 17/32	2 1/2	0	3/4	4 1/8	3/4	1 3/4	9/32	19.5
8.2	8.6	8.95	7 1/16	3MVB86Q	Q1	15-Web	3 17/32	2 1/2	0	3/4	4 1/8	3/4	1 3/4	9/32	23.5
8.6	9.0	9.35	7 1/2	3MVB90Q	Q1	15-Arm	3 17/32	2 1/2	0	3/4	4 1/8	3/4	1 3/4	9/32	22.8
9.0	9.4	9.75	7 15/16	3MVB94Q	Q1	15-Arm	3 17/32	2 1/2	0	3/4	4 1/8	3/4	1 3/4	9/32	22.5
10.6	11.0	11.35	9 7/16	3MVB110Q	Q1	15-Arm	3 17/32	2 1/2	0	3/4	4 1/8	3/4	1 3/4	9/32	29.0
12.0	12.4	12.75	10 15/16	3MVB124Q	Q1	15-Arm	3 17/32	2 1/2	0	3/4	4 1/8	3/4	1 3/4	9/32	31.3
13.2	13.6	13.95	12 1/16	3MVB136Q	Q1	15-Arm	3 17/32	2 1/2	0	3/4	4 1/8	3/4	1 3/4	9/32	35.4
15.0	15.4	15.75	13 15/16	3MVB154Q	Q1	15-Arm	3 17/32	2 1/2	0	3/4	4 1/8	3/4	1 3/4	9/32	40.0
15.0	15.4	15.75	13 15/16	3MVB154R	R1	13-Arm	3 25/32	2 7/8	1/4"	5/8	5 3/8	7/8	2	9/32	44.6
18.0	18.4	18.75	16 15/16	3MVB184Q	Q1	15-Arm	3 17/32	2 1/2	0	3/4	4 1/8	3/4	1 3/4	9/32	49.3
18.0	18.4	18.75	16 15/16	3MVB184R	R1	13-Arm	3 25/32	2 7/8	1/4	5/8	5 3/8	7/8	2	9/32	53.5
19.5	20.0	20.35	18 1/2	3MVB200R	R1	13-Arm	3 25/32	2 7/8	1/4	5/8	5 3/8	7/8	2	9/32	61.0
24.5	25.0	25.35	23 1/2	3MVB250R	R1	13-Arm	3 25/32	2 7/8	1/4	5/8	5 3/8	7/8	2	9/32	77.0
29.5	30.0	30.35	28 1/2	3MVB300R	R1	13-Arm	3 25/32	2 7/8	1/4	5/8	5 3/8	7/8	2	9/32	109
37.5	38.0	38.35	36 1/2	3MVB380R	R1	13-Arm	3 25/32	2 7/8	1/4	5/8	5 3/8	7/8	2	9/32	132
4 GROOVES, F = 4 3/8"															
4.6"	5.0"	5.35"	3 1/2"	4MVB50Q	Q2	5	5 13/32"	3 1/2"	3/4"	1 5/8"	4 1/8"	3/4"	2 3/4"	9/32"	12.1
5.0	5.4	5.75	3 7/8	4MVB54Q	Q2	5	5 13/32	3 1/2	3/4	1 5/8	4 1/8	3/4	2 3/4	9/32	15.4
5.6	6.0	6.35	4 1/2	4MVB60Q	Q2	15-Web	4 19/32	3 1/2	1/16	13/16	4 1/8	3/4	2 3/4	9/32	19.1
6.0	6.4	6.75	4 7/8	4MVB64Q	Q2	15-Web	4 19/32	3 1/2	1/16	13/16	4 1/8	3/4	2 3/4	9/32	23.3
6.6	7.0	7.35	5 1/2	4MVB70Q	Q2	15-Web	4 19/32	3 1/2	1/16	13/16	4 1/8	3/4	2 3/4	9/32	24.8
7.0	7.4	7.75	5 15/16	4MVB74Q	Q2	15-Web	4 19/32	3 1/2	1/16	13/16	4 1/8	3/4	2 3/4	9/32	29.0
7.6	8.0	8.35	6 1/2	4MVB80Q	Q2	15-Web	4 19/32	3 1/2	1/16	13/16	4 1/8	3/4	2 3/4	9/32	26.2
8.2	8.6	8.95	7 1/16	4MVB86Q	Q2	15-Web	4 19/32	3 1/2	1/16	13/16	4 1/8	3/4	2 3/4	9/32	30.0
8.6	9.0	9.35	7 1/2	4MVB90Q	Q2	15-Web	4 19/32	3 1/2	1/16	13/16	4 1/8	3/4	2 3/4	9/32	33.4
9.0	9.4	9.75	7 15/16	4MVB94Q	Q2	15-Web	4 19/32	3 1/2	1/16	13/16	4 1/8	3/4	2 3/4	9/32	35.3
10.6	11.0	11.35	9 7/16	4MVB110R	R1	15-Arm	4 3/8	2 7/8	5/16	1 3/16	5 3/8	7/8	2	9/32	39.5
12.0	12.4	12.75	10 15/16	4MVB124R	R1	15-Arm	4 3/8	2 7/8	5/16	1 3/16	5 3/8	7/8	2	9/32	42.3
13.2	13.6	13.95	12 1/16	4MVB136R	R1	15-Arm	4 3/8	2 7/8	5/16	1 3/16	5 3/8	7/8	2	9/32	47.0
15.0	15.4	15.75	13 15/16	4MVB154R	R1	15-Arm	4 3/8	2 7/8	5/16	1 3/16	5 3/8	7/8	2	9/32	52.5
18.0	18.4	18.75	16 15/16	4MVB184R	R1	15-Arm	4 3/8	2 7/8	5/16	1 3/16	5 3/8	7/8	2	9/32	65.0
19.5	20.0	20.35	18 1/2	4MVB200R	R1	15-Arm	4 3/8	2 7/8	5/16	1 3/16	5 3/8	7/8	2	9/32	73.0
24.5	25.0	25.35	23 1/2	4MVB250R	R1	15-Arm	4 3/8	2 7/8	5/16	1 3/16	5 3/8	7/8	2	9/32	88.0
29.5	30.0	30.35	28 1/2	4MVB300R	R1	15-Arm	4 3/8	2 7/8	5/16	1 3/16	5 3/8	7/8	2	9/32	131
37.5	38.0	38.35	36 1/2	4MVB380R	R1	15-Arm	4 3/8	2 7/8	5/16	1 3/16	5 3/8	7/8	2	9/32	171

Bushing Bores

Table No. 2

Bushing No.	Bore Range
P1	1/2" - 1 3/4"
Q1	3/4 - 2 11/16
Q2	1 - 2 5/8
R1	1 1/8 - 3 3/4

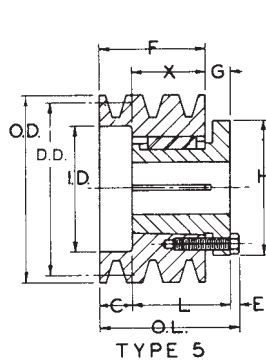
Standard Keyseats

Table No. 3

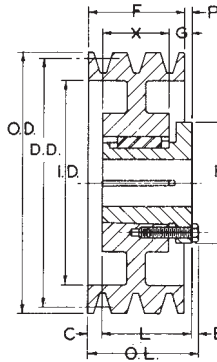
Bore Range	Keyseat	Bore Range	Keyseat
1/2" - 9/16"	1/8" x 1/16"	1 13/16" - 2 1/4"	1/2" x 1/4"
5/8 - 7/8	3/16 x 3/32	2 5/16 - 2 3/4	5/8 x 5/16
15/16 - 1 1/4	1/4 x 1/8	2 13/16 - 3 1/4	3/4 x 3/8
1 5/16 - 1 3/8	5/16 x 5/32	3 3/8 - 3 3/4	7/8 x 7/16
1 7/16 - 1 3/4	3/8 x 3/16		

1 3/8" Bore Bushings also available with 3/8" x 3/16" Keyseat.

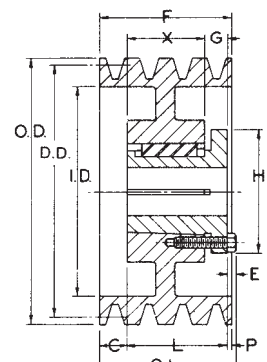
STOCK COMPANION SHEAVES for "A" and "B" BELTS



TYPE 5



TYPE 13



TYPE 15

Table No. 1

Specifications

DIAMETERS				PART NUMBER		Type	DIMENSIONS									
Datum "A" Belts	Datum "B" Belts	Outside	Inside	Sheave	Bushing		O.L.	L	P	C	H	G	X	E	Wt. Less Bush.	
5 GROOVES, F = 5 1/2"																
4.6"	5.0"	5.35"	3 1/2"	5MVB50Q	Q2	5	6 17/32"	3 1/2"	3/4"	2 3/4"	4 1/8"	3/4"	2 3/4"	9/32"	15.2	
5.0	5.4	5.75	3 7/8	5MVB54Q	Q2	5	6 17/32"	3 1/2"	3/4"	2 3/4"	4 1/8"	3/4"	2 3/4"	9/32"	19.0	
5.6	6.0	6.35	4 1/2	5MVB60Q	Q2	15-Web	5 1/2"	3 1/2"	1 1/4"	3/4"	4 1/8"	3/4"	2 3/4"	9/32"	22.8	
6.0	6.4	6.75	4 7/8	5MVB64Q	Q2	15-Web	5 1/2"	3 1/2"	1 1/4"	3/4"	4 1/8"	3/4"	2 3/4"	9/32"	27.6	
6.6	7.0	7.35	5 1/2	5MVB70R	R2	13-Web	5 29/32"	4 7/8"	1/8"	3/4"	5 3/8"	7/8"	4"	9/32"	31.8	
7.0	7.4	7.75	5 15/16	5MVB74R	R2	13-Web	5 29/32"	4 7/8"	1/8"	3/4"	5 3/8"	7/8"	4"	9/32"	37.0	
7.6	8.0	8.35	6 1/2	5MVB80R	R2	13-Web	5 29/32"	4 7/8"	1/8"	3/4"	5 3/8"	7/8"	4"	9/32"	45.3	
8.2	8.6	8.95	7 1/16	5MVB86R	R2	13-Web	5 29/32"	4 7/8"	1/8"	3/4"	5 3/8"	7/8"	4"	9/32"	51.3	
8.6	9.0	9.35	7 1/2	5MVB90R	R2	13-Web	5 29/32"	4 7/8"	1/8"	3/4"	5 3/8"	7/8"	4"	9/32"	64.0	
9.0	9.4	9.75	7 15/16	5MVB94R	R2	13-Arm	5 29/32"	4 7/8"	1/8"	3/4"	5 3/8"	7/8"	4"	9/32"	50.5	
10.6	11.0	11.35	9 7/16	5MVB110R	R2	13-Arm	5 29/32"	4 7/8"	1/8"	3/4"	5 3/8"	7/8"	4"	9/32"	66.0	
12.0	12.4	12.75	10 15/16	5MVB124R	R2	13-Arm	5 29/32"	4 7/8"	1/8"	3/4"	5 3/8"	7/8"	4"	9/32"	64.0	
13.2	13.6	13.95	12 1/16	5MVB136R	R2	13-Arm	5 29/32"	4 7/8"	1/8"	3/4"	5 3/8"	7/8"	4"	9/32"	73.5	
15.0	15.4	15.75	13 15/16	5MVB154R	R2	13-Arm	5 29/32"	4 7/8"	1/8"	3/4"	5 3/8"	7/8"	4"	9/32"	81.5	
18.0	18.4	18.75	16 15/16	5MVB184R	R2	13-Arm	5 29/32"	4 7/8"	1/8"	3/4"	5 3/8"	7/8"	4"	9/32"	91.0	
19.5	20.0	20.35	18 1/2	5MVB200R	R2	13-Arm	5 29/32"	4 7/8"	1/8"	3/4"	5 3/8"	7/8"	4"	9/32"	102	
24.5	25.0	25.35	23 1/2	5MVB250R	R2	13-Arm	5 29/32"	4 7/8"	1/8"	3/4"	5 3/8"	7/8"	4"	9/32"	115	
29.5	30.0	30.35	28 1/2	5MVB300R	R2	13-Arm	5 29/32"	4 7/8"	1/8"	3/4"	5 3/8"	7/8"	4"	9/32"	166	
37.5	38.0	38.35	36 1/2	5MVB380R	R2	13-Arm	5 29/32"	4 7/8"	1/8"	3/4"	5 3/8"	7/8"	4"	9/32"	235	
6 GROOVES, F = 6 5/8"																
5.0	5.4	5.75	3 7/8	6MVB54Q	Q2	5	7 21/32"	3 1/2"	3/4"	3 7/8"	4 1/8"	3/4"	2 3/4"	9/32"	22.0	
5.6	6.0	6.35	4 1/2	6MVB60Q	Q2	15-Web	6 5/8"	3 1/2"	2 3/8"	3/4"	4 1/8"	3/4"	2 3/4"	9/32"	26.3	
6.6	7.0	7.35	5 1/2	6MVB70R	R2	15-Web	6 5/8"	4 7/8"	7/16"	1 5/16"	5 3/8"	7/8"	4"	9/32"	35.5	
9.0	9.4	9.75	7 15/16	6MVB94R	R2	15-Web	6 5/8"	4 7/8"	7/16"	1 5/16"	5 3/8"	7/8"	4"	9/32"	56.5	
10.6	11.0	11.35	9 7/16	6MVB110R	R2	15-Arm	6 5/8"	4 7/8"	7/16"	1 5/16"	5 3/8"	7/8"	4"	9/32"	62.0	
12.0	12.4	12.75	10 15/16	6MVB124R	R2	15-Arm	6 5/8"	4 7/8"	7/16"	1 5/16"	5 3/8"	7/8"	4"	9/32"	70.0	
13.2	13.6	13.95	12 1/16	6MVB136R	R2	15-Arm	6 5/8"	4 7/8"	7/16"	1 5/16"	5 3/8"	7/8"	4"	9/32"	79.0	
15.0	15.4	15.75	13 15/16	6MVB154R	R2	15-Arm	6 5/8"	4 7/8"	7/16"	1 5/16"	5 3/8"	7/8"	4"	9/32"	90.0	
18.0	18.4	18.75	16 15/16	6MVB184R	R2	15-Arm	6 5/8"	4 7/8"	7/16"	1 5/16"	5 3/8"	7/8"	4"	9/32"	101	
19.5	20.0	20.35	18 1/2	6MVB200R	R2	15-Arm	6 5/8"	4 7/8"	7/16"	1 5/16"	5 3/8"	7/8"	4"	9/32"	114	
24.5	25.0	25.35	23 1/2	6MVB250R	R2	15-Arm	6 5/8"	4 7/8"	7/16"	1 5/16"	5 3/8"	7/8"	4"	9/32"	147	
29.5	30.0	30.35	28 1/2	6MVB300R	R2	15-Arm	6 5/8"	4 7/8"	7/16"	1 5/16"	5 3/8"	7/8"	4"	9/32"	181	
37.5	38.0	38.35	36 1/2	6MVB380R	R2	15-Arm	6 5/8"	4 7/8"	7/16"	1 5/16"	5 3/8"	7/8"	4"	9/32"	245	

Bushing Bores

Table No. 2

Bushing No.	Bore Range
Q2	1" — 2 5/8"
R2	1 3/8" — 3 5/8"

Standard Keyseats

Table No. 3

Bore Range	Keyseat	Bore Range	Keyseat
1" — 1 1/4"	1/4" x 1/8"	2 5/6" — 2 3/4"	5/8" x 5/16"
1 5/16" — 1 3/8"	5/16 x 5/32"	2 13/16" — 3 1/4"	3/4 x 3/8"
1 7/16" — 1 3/4"	3/8 x 3/16"	3 3/8" — 3 3/4"	7/8 x 7/16"
1 13/16" — 2 1/4"	1/2 x 1/4"		

1 3/8" Bore Bushings (Except R2) also available with 3/8" x 3/16" Keyseat.

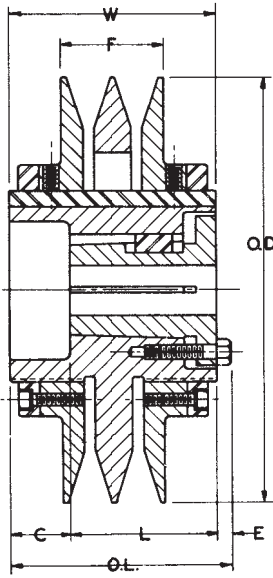
STOCK BUSHED TYPE VARIABLE SPEED SHEAVES FOR "C" BELTS

Table No. 1

Two Groove "C" Locking Ring Variable Speed Sheaves

Part Number		O.D.	Belt Size	Datum Range				DIMENSIONS						Wt Less Bush.	
Sheave	Bushing			Min. Pitch	Turns Open	Max. Pitch	Turns Open	O.L.	F		L	C	W		E
		Max.	Min.												
2V72C90Q	Q2	9.48"	C	7.2"	9	9.0"	0	5 1/32"	3 1/4"	2 1/8"	3 1/2"	1 1/4"	4 3/4"	9/32"	34.3
2V82C100Q	Q2	10.48	C	8.2	9	10.0	0	5 1/32	3 1/4	2 1/8"	3 1/2	1 1/4	4 3/4	9/32	41.0
2V92C110Q	Q2	11.48	C	9.2	9	11.0	0	5 1/32	3 1/4	2 1/8"	3 1/2	1 1/4	4 3/4	9/32	48.4

*Use Browning Gripbelts and Stock 2 Groove Sheaves with these Sheaves. D.D. is adjustable on quarter-turn increments ; .05" per quarter - turn.



Standard Keyseats

Table No. 3

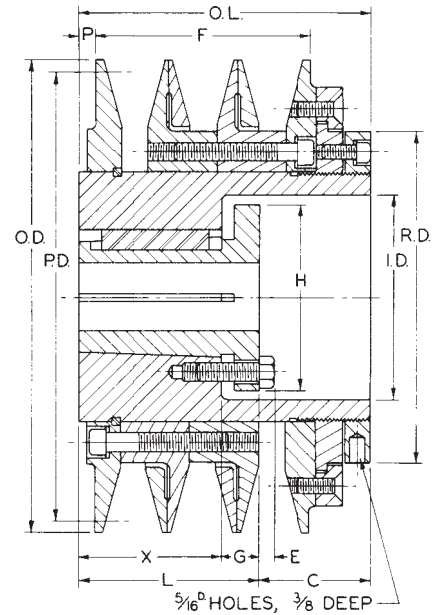
Bore Range	Keyseat
1" - 1 1/4"	1/4" x 1/8"
1 5/16 - 1 3/8	5/16 x 5/32
1 7/16 - 1 3/4	3/8 x 3/16
1 13/16 - 2 1/4	1/2 x 1/4
2 5/16 - 2 5/8	5/8 x 5/16
2 7/8	3/4 x 3/8

1 3/8" Bore Bushings (Except Q3) also available with 3/8" x 3/16" Keyseat.

Bushing Bores

Table No. 4

Bushing No.	Bore Range
Q2	1" - 2 5/8"
Q3	1 3/8 - 2 1/2"



LOCKING RING VARIABLE SPEED SHEAVES

MVP® SHEAVES

U.S. Patent No. 5,304,098

DYNAMICALLY BALANCED

Table No. 2

MVP® Sheaves

DIAMETERS				PART NUMBERS		DIMENSIONS											Wt. Less Bush.
Datum Range "C" Belts	Out-side	In-side	Ring (R.D.)	Sheave	Bushing	O.L.	F		L	C	H	G	X	P	E		
							Max.	Min.									
2 GROOVES																	
7.5" - 9.7"	10.06"	4 7/16"	6 1/2"	2MVP75C97Q	Q2	4 5/8"	3 3/8"	2 25/32"	3 1/2"	1 1/8"	4 1/8"	3/4"	2 3/4"	1/4"	9/32"	44.6	
8.5 - 10.7	11.06	4 7/16	6 1/2	2MVP85C107Q	Q2	4 5/8	3 3/8	2 25/32	3 1/2	1 1/8	4 1/8	3/4	2 3/4	1/4	9/32	51.5	
9.5 - 11.7	12.06	4 7/16	6 1/2	2MVP95C117Q	Q2	4 5/8	3 3/8	2 25/32	3 1/2	1 1/8	4 1/8	3/4	2 3/4	1/4	9/32	61.0	
10.5 - 12.7	13.06	4 7/16	6 1/2	2MVP105C127Q	Q2	4 5/8	3 3/8	2 25/32	3 1/2	1 1/8	4 1/8	3/4	2 3/4	1/4	9/32	69.5	
11.5 - 13.7	14.06	4 7/16	6 1/2	2MVP115C137Q	Q2	4 5/8	3 3/8	2 25/32	3 1/2	1 1/8	4 1/8	3/4	2 3/4	1/4	9/32	81.0	
3 GROOVES																	
7.5" - 9.7"	10.06"	4 7/16"	6 1/2"	3MVP75C97Q	Q2	6 9/32"	5 1/32"	4 7/16"	3 1/2"	2 25/32"	4 1/8"	3/4"	2 3/4"	1/4"	9/32"	57.5	
8.0 - 10.2	10.56	4 7/16	6 1/2	3MVP80C102Q	Q2	6 9/32	5 1/32	4 7/16	3 1/2	2 25/32	4 1/8	3/4	2 3/4	1/4	9/32	63.5	
8.5 - 10.7	11.06	4 7/16	6 1/2	3MVP85C107Q	Q2	6 9/32	5 1/32	4 7/16	3 1/2	2 25/32	4 1/8	3/4	2 3/4	1/4	9/32	68.5	
9.0 - 11.2	11.56	4 7/16	6 1/2	3MVP90C112Q	Q2	6 9/32	5 1/32	4 7/16	3 1/2	2 25/32	4 1/8	3/4	2 3/4	1/4	9/32	73.5	
9.5 - 11.7	12.06	4 7/16	6 1/2	3MVP95C117Q	Q2	6 9/32	5 1/32	4 7/16	3 1/2	2 25/32	4 1/8	3/4	2 3/4	1/4	9/32	78.0	
10.5 - 12.7	13.06	4 7/16	6 1/2	3MVP105C127Q	Q2	6 9/32	5 1/32	4 7/16	3 1/2	2 25/32	4 1/8	3/4	2 3/4	1/4	9/32	92.5	
11.5 - 13.7	14.06	4 7/16	6 1/2	3MVP115C137Q	Q2	6 9/32	5 1/32	4 7/16	3 1/2	2 25/32	4 1/8	3/4	2 3/4	1/4	9/32	111	
4 GROOVES																	
7.5" - 9.7"	10.06"	4 7/16"	6 1/2"	4MVP75C97Q	Q3	7 15/16"	6 11/16"	6 3/32"	5"	2 15/16"	4 1/8"	3/4"	4 1/4"	1/4"	9/32"	74.0	
8.5 - 10.7	11.06	4 7/16	6 1/2	4MVP85C107Q	Q3	7 15/16	6 11/16	6 3/32	5	2 15/16	4 1/8	3/4	4 1/4"	1/4	9/32	89.0	
9.5 - 11.7	12.06	4 7/16	6 1/2	4MVP95C117Q	Q3	7 15/16	6 11/16	6 3/32	5	2 15/16	4 1/8	3/4	4 1/4"	1/4	9/32	103	
10.5 - 12.7	13.06	4 7/16	6 1/2	4MVP105C127Q	Q3	7 15/16	6 11/16	6 3/32	5	2 15/16	4 1/8	3/4	4 1/4"	1/4	9/32	121	
11.5 - 13.7	14.06	4 7/16	6 1/2	4MVP115C137Q	Q3	7 15/16	6 11/16	6 3/32	5	2 15/16	4 1/8	3/4	4 1/4"	1/4	9/32	141	

Datum diameter is infinitely adjustable within the datum range, .233" change per turn of the adjusting ring.

STOCK FINISHED BORE MVP® SHEAVES FOR "C" BELTS
 U.S. Patent No. 5,304,098
DYNAMICALLY BALANCED

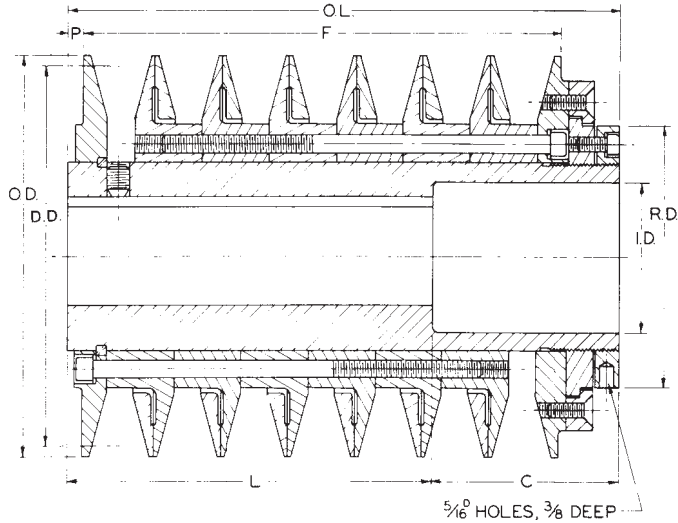


Table No. 1

Specifications

DIAMETERS				Part Numbers	DIMENSIONS			STOCK BORES MARKED " X "					Wt. Lbs.	
Datum Range "C" Belts	Out-side	In-side	Ring (R.D.)		O.L.	F		P	1 7/8"	2 1/8"	2 3/8"	2 7/8"		3 3/8"
						Max.	Min.							
5 GROOVES														
7.5" - 9.7"	10.06"	4 5/16"	6 1/2"	5MVP75C97	9 19/32"	8 11/32"	7 3/4"	1/4"	x	x	x	—	—	97
8.5 - 10.7	11.06	4 5/16	6 1/2	5MVP85C107	9 19/32	8 11/32	7 3/4	1/4	—	x	x	x	—	115
9.5 - 11.7	12.06	4 5/16	6 1/2	5MVP95C117	9 19/32	8 11/32	7 3/4	1/4	—	x	x	x	—	133
10.5 - 12.7	13.06	4 5/16	6 1/2	5MVP105C127	9 19/32	8 11/32	7 3/4	1/4	—	—	x	x	—	156
11.5 - 13.7	14.06	4 5/16	6 1/2	5MVP115C137	9 19/32	8 11/32	7 3/4	1/4	—	—	x	—	—	180
6 GROOVES														
7.5" - 9.7"	10.06"	4 5/16"	6 1/2"	6MVP75C97	11 1/4"	10"	9 13/32"	1/4"	—	x	x	—	—	109
8.5 - 10.7	11.06	4 5/16	6 1/2	6MVP85C107	11 1/4	10	9 13/32	1/4	—	—	x	x	—	132
9.5 - 11.7	12.06	4 5/16	6 1/2	6MVP95C117	11 1/4	10	9 13/32	1/4	—	—	x	x	—	152
10.5 - 12.7	13.06	4 5/16	6 1/2	6MVP105C127	11 1/4	10	9 13/32	1/4	—	—	x	—	—	177
11.5 - 13.7	14.06	4 5/16	6 1/2	6MVP115C137	11 1/4	10	9 13/32	1/4	—	—	x	—	—	210
7 GROOVES														
7.5" - 9.7"	10.06"	4 5/16"	6 1/2"	7MVP75C97	12 29/32"	11 21/32"	11 1/16"	1/4"	—	—	x	x	—	130
8.5 - 10.7	11.06	4 5/16	6 1/2	7MVP85C107	12 29/32	11 21/32	11 1/16	1/4	—	—	x	x	—	153
9.5 - 11.7	12.06	4 5/16	6 1/2	7MVP95C117	12 29/32	11 21/32	11 1/16	1/4	—	—	—	x	—	178
10.5 - 12.7	13.06	4 5/16	6 1/2	7MVP105C127	12 29/32	11 21/32	11 1/16	1/4	—	—	—	x	—	200
11.5 - 13.7	14.06	4 5/16	6 1/2	7MVP115C137	12 29/32	11 21/32	11 1/16	1/4	—	—	—	—	x	237
8 GROOVES														
7.5" - 9.7"	10.06"	4 5/16"	6 1/2"	8MVP75C97	14 9/16"	13 5/16"	12 23/32"	1/4"	—	—	—	x	—	139
8.5 - 10.7	11.06	4 5/16	6 1/2	8MVP85C107	14 9/16	13 5/16	12 23/32	1/4	—	—	—	x	—	161
9.5 - 11.7	12.06	4 5/16	6 1/2	8MVP95C117	14 9/16	13 5/16	12 23/32	1/4	—	—	—	x	x	200
10.5 - 12.7	13.06	4 5/16	6 1/2	8MVP105C127	14 9/16	13 5/16	12 23/32	1/4	—	—	—	—	x	232
11.5 - 13.7	14.06	4 5/16	6 1/2	8MVP115C137	14 9/16	13 5/16	12 23/32	1/4	—	—	—	—	x	272
10 GROOVES														
7.5" - 9.7"	10.06"	4 5/16"	6 1/2"	10MVP75C97	17 7/8"	16 5/8"	16 1/32"	1/4"	—	—	—	x	—	168
8.5 - 10.7	11.06	4 5/16	6 1/2	10MVP85C107	17 7/8	16 5/8	16 1/32	1/4	—	—	—	x	—	206
9.5 - 11.7	12.06	4 5/16	6 1/2	10MVP95C117	17 7/8	16 5/8	16 1/32	1/4	—	—	—	x	x	240
10.5 - 12.7	13.06	4 5/16	6 1/2	10MVP105C127	17 7/8	16 5/8	16 1/32	1/4	—	—	—	—	x	276
11.5 - 13.7	14.06	4 5/16	6 1/2	10MVP115C137	17 7/8	16 5/8	16 1/32	1/4	—	—	—	—	x	322

Browning Finished Bore "MVP" Sheaves are furnished with standard keyseats and two hollow head set screws. Datum diameter is infinitely adjustable within the datum range, .233" change per turn of the adjusting ring.

Standard Keyseats

Table No. 2

Bore	Keyseat
1 7/8, 2 1/8	1/2" x 1/4"
2 3/8	5/8 x 5/16
2 7/8	3/4 x 3/8
3 3/8	7/8 x 7/16

Table No. 3

"L" and "C" Dimensions

No. Grooves	BORES									
	1 7/8		2 1/8		2 3/8		2 7/8		3 3/8	
	L	C	L	C	L	C	L	C	L	C
5	4 3/8"	5 7/32"	5"	4 19/32"	5 5/8"	3 31/32"	6 3/8"	3 7/32"	—	—
6	—	—	6 1/8	5 1/8	6 3/8	4 7/8	6/38	4 7/8	—	—
7	—	—	6 1/8	6 25/32	6 7/8	6 1/32	7	5 29/32	8 1/4"	4 21/32"
8	—	—	—	—	6 7/8	7 11/16	7	7 9/16	8 1/4"	6 5/16
10	—	—	—	—	6 7/8	11	8 3/8	9 1/2	9 7/8	8

Dimensions shown above are for sheaves with Number of Grooves and Bore indicated; for example, a 6MVP75C97 x 2 1/8 Sheave has a 6 1/8" "L" Dimension and 5 1/8" "C" Dimension.

STOCK COMPANION SHEAVES for "C" BELTS

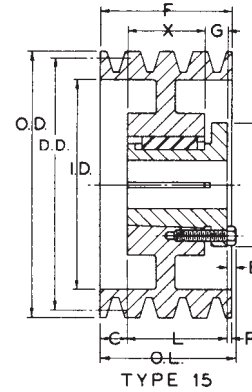
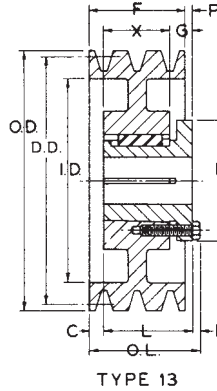


Table No. 1

Specifications

DIAMETERS			PART NUMBER		Type	DIMENSIONS							Wt. Less Bush.	
Datum "C" Belts	Outside	Inside	Sheave	Bushing		O.L.	L	P	C	H	G	X		E
3 GROOVES, F = 4 9/16"														
8.0"	8.40"	6 1/4"	3MVC80Q	Q2	15-Web	4 11/16"	3 1/2"	5/32"	29/32"	4 1/8"	3/4"	2 3/4"	9/32"	33.5
8.6	9.00	6 13/16	3MVC86Q	Q2	15-Web	4 11/16	3 1/2	5/32	29/32	4 1/8	3/4	2 3/4	9/32	34.0
9.0	9.40	7 1/4	3MVC90Q	Q2	15-Web	4 11/16	3 1/2	5/32	29/32	4 1/8	3/4	2 3/4	9/32	35.5
9.6	10.00	7 13/16	3MVC96Q	Q2	15-Web	4 11/16	3 1/2	5/32	29/32	4 1/8	3/4	2 3/4	9/32	41.5
10.0	10.40	8 1/4	3MVC100Q	Q2	15-Arm	4 11/16	3 1/2	5/32	29/32	4 1/8	3/4	2 3/4	9/32	45.8
10.6	11.00	8 13/16	3MVC106Q	Q2	15-Arm	4 11/16	3 1/2	5/32	29/32	4 1/8	3/4	2 3/4	9/32	46.6
11.0	11.40	9 1/4	3MVC110Q	Q2	15-Arm	4 11/16	3 1/2	5/32	29/32	4 1/8	3/4	2 3/4	9/32	45.8
12.0	12.40	10 1/4	3MVC120Q	Q2	15-Arm	4 11/16	3 1/2	5/32	29/32	4 1/8	3/4	2 3/4	9/32	50.3
13.0	13.40	11 1/4	3MVC130Q	Q2	15-Arm	4 11/16	3 1/2	5/32	29/32	4 1/8	3/4	2 3/4	9/32	53.0
14.0	14.40	12 5/16	3MVC140R	R1	15-Arm	4 9/16	2 7/8	13/32	1 9/32	5 3/8	7/8	2	9/32	56.5
16.0	16.40	14 3/16	3MVC160R	R1	15-Arm	4 9/16	2 7/8	13/32	1 9/32	5 3/8	7/8	2	9/32	67.5
18.0	18.40	16 3/8	3MVC180R	R1	15-Arm	4 9/16	2 7/8	13/32	1 9/32	5 3/8	7/8	2	9/32	96.5
20.0	20.40	18 3/16	3MVC200R	R1	15-Arm	4 9/16	2 7/8	13/32	1 9/32	5 3/8	7/8	2	9/32	85.0
24.0	24.40	22 3/16	3MVC240R	R1	15-Arm	4 9/16	2 7/8	13/32	1 9/32	5 3/8	7/8	2	9/32	101
27.0	27.40	25 3/8	3MVC270R	R2	13-Arm	5 7/16	4 7/8	19/32	9/32	5 3/8	7/8	4	9/32	131
30.0	30.40	28 1/8	3MVC300R	R2	13-Arm	5 7/16	4 7/8	19/32	9/32	5 3/8	7/8	4	9/32	156
36.0	36.40	34 1/8	3MVC360R	R2	13-Arm	5 7/16	4 7/8	19/32	9/32	5 3/8	7/8	4	9/32	200
44.0	44.40	42 1/8	3MVC440U	U0	13-Arm	5 13/16	4 15/16	25/32	13/32	8 3/8	1 3/16	3 3/4	15/32	290
50.0	50.40	48 1/8	3MVC500U	U0	13-Arm	5 13/16	4 15/16	25/32	13/32	8 3/8	1 3/16	3 3/4	15/32	315
4 GROOVES, F = 6 7/32"														
8.0"	8.40"	6 1/4"	4MVC80Q	Q2	15-Web	6 7/32"	3 1/2"	63/64"	1 47/64"	4 1/8"	3/4"	2 3/4"	9/32"	43.5
8.6	9.00	6 13/16	4MVC86Q	Q2	15-Web	6 7/32	3 1/2	63/64	1 47/64	4 1/8	3/4	2 3/4	9/32	43.6
9.0	9.40	7 1/4	4MVC90Q	Q2	15-Web	6 7/32	3 1/2	63/64	1 47/64	4 1/8	3/4	2 3/4	9/32	45.3
9.6	10.00	7 13/16	4MVC96Q	Q2	15-Web	6 7/32	3 1/2	63/64	1 47/64	4 1/8	3/4	2 3/4	9/32	52.5
10.0	10.40	8 1/4	4MVC100Q	Q2	15-Arm	6 7/32	3 1/2	63/64	1 47/64	4 1/8	3/4	2 3/4	9/32	56.0
10.6	11.00	8 13/16	4MVC106Q	Q2	15-Arm	6 7/32	3 1/2	63/64	1 47/64	4 1/8	3/4	2 3/4	9/32	56.5
11.0	11.40	9 1/4	4MVC110Q	Q2	15-Arm	6 7/32	3 1/2	63/64	1 47/64	4 1/8	3/4	2 3/4	9/32	56.0
12.0	12.40	10 1/4	4MVC120R	R2	15-Arm	6 17/64	4 7/8	15/64	1 7/64	5 3/8	7/8	4	9/32	71.0
13.0	13.40	11 1/4	4MVC130R	R2	15-Arm	6 17/64	4 7/8	15/64	1 7/64	5 3/8	7/8	4	9/32	72.5
14.0	14.40	12 5/16	4MVC140R	R2	15-Arm	6 17/64	4 7/8	15/64	1 7/64	5 3/8	7/8	4	9/32	80.0
16.0	16.40	14 3/16	4MVC160R	R2	15-Arm	6 17/64	4 7/8	15/64	1 7/64	5 3/8	7/8	4	9/32	93.0
18.0	18.40	16 3/8	4MVC180R	R2	15-Arm	6 17/64	4 7/8	15/64	1 7/64	5 3/8	7/8	4	9/32	105
20.0	20.40	18 3/16	4MVC200R	R2	15-Arm	6 17/64	4 7/8	15/64	1 7/64	5 3/8	7/8	4	9/32	115
24.0	24.40	22 3/16	4MVC240R	R2	15-Arm	6 17/64	4 7/8	15/64	1 7/64	5 3/8	7/8	4	9/32	138
27.0	27.40	25 3/8	4MVC270R	R2	15-Arm	6 17/64	4 7/8	15/64	1 7/64	5 3/8	7/8	4	9/32	157
30.0	30.40	28 1/8	4MVC300R	R2	15-Arm	6 17/64	4 7/8	15/64	1 7/64	5 3/8	7/8	4	9/32	197
36.0	36.40	34 1/8	4MVC360R	R2	15-Arm	6 17/64	4 7/8	15/64	1 7/64	5 3/8	7/8	4	9/32	241
50.0	50.40	48 1/8	4MVC500U	U0	15-Arm	6 41/64	4 15/16	3/64	1 15/64	8 3/8	1 3/16	3 3/4	15/32	420

Bushing Bores

Table No. 2

Bushing No.	Bore Range
Q2	1" - 2 5/8"
R1	1 1/8 - 3 3/4
R2	1 3/8 - 3 5/8
U0	2 3/8 - 5 1/2

Standard Keyseats

Table No. 3

Bore Range	Keyseat	Bore Range	Keyseat
1" - 1 1/4"	1/4" x 1/8	2 5/6" - 2 3/4	5/8" x 5/16"
1 5/16 - 1 3/8	5/16 x 5/32	2 13/16 - 3 1/4	3/4 x 3/8
1 7/16 - 1 3/4	3/8 x 3/16	3 3/8 - 3 3/4	7/8 x 7/16
1 13/16 - 2 1/4	1/2 x 1/4	3 7/8 - 4 1/2	1 x 1/2
		4 5/8 - 5 1/2	1 1/4 x 5/8

1 3/8" Bore Bushings (Except R2) also available with 3/8" x 3/16" Keyseat.

STOCK COMPANION SHEAVES for "C" BELTS

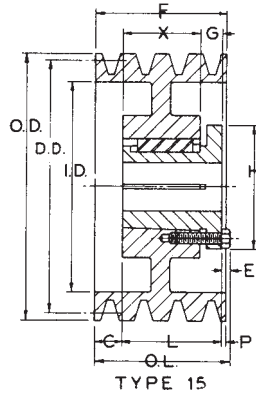


Table No. 1 Specifications

DIAMETERS		Inside	PART NUMBER		Type	DIMENSIONS								Wt. Less Bush.
Datum "C" Belts	Outside		Sheave	Bushing		O.L.	L	P	C	H	G	X	E	
5 GROOVES, F = 7 7/8"														
8.0"	8.40"	6 3/8"	5MVC80R	R2	15-Web	7 7/8"	4 7/8"	1 3/8"	1 5/8"	5 3/8"	7/8"	4"	9/32"	54
8.6	9.00	6 15/16	5MVC86R	R2	15-Web	7 7/8	4 7/8	1 3/8	1 5/8	5 3/8	7/8	4	9/32	68
9.0	9.40	7 3/16	5MVC90R	R2	15-Web	7 7/8	4 7/8	1 3/8	1 5/8	5 3/8	7/8	4	9/32	72
9.6	10.00	7 13/16	5MVC96R	R2	15-Web	7 7/8	4 7/8	1 3/8	1 5/8	5 3/8	7/8	4	9/32	80
10.0	10.40	8 3/16	5MVC100R	R2	15-Web	7 7/8	4 7/8	1 3/8	1 5/8	5 3/8	7/8	4	9/32	82
10.6	11.00	8 13/16	5MVC106R	R2	15-Web	7 7/8	4 7/8	1 3/8	1 5/8	5 3/8	7/8	4	9/32	84
11.0	11.40	9 5/16	5MVC110R	R2	15-Web	7 7/8	4 7/8	1 1/16	1 15/16	5 3/8	7/8	4	9/32	86
12.0	12.40	10 5/16	5MVC120R	R2	15-Web	7 7/8	4 7/8	1 1/16	1 15/16	5 3/8	7/8	4	9/32	83
13.0	13.40	11 5/16	5MVC130R	R2	15-Web	7 7/8	4 7/8	1 1/16	1 15/16	5 3/8	7/8	4	9/32	93
14.0	14.40	12 5/6	5MVC140R	R2	15-Arm	7 7/8	4 7/8	1 1/16	1 15/16	5 3/8	7/8	4	9/32	98
16.0	16.40	14 3/16	5MVC160R	R2	15-Arm	7 7/8	4 7/8	1 1/16	1 15/16	5 3/8	7/8	4	9/32	110
18.0	18.40	16 3/8	5MVC180S	S2	15-Arm	8 7/32	6 3/4	1/32	1 3/32	6 3/8	1 1/16	5 11/16	3/8	156
20.0	20.40	18 3/16	5MVC200S	S2	15-Arm	8 7/32	6 3/4	1/32	1 3/32	6 3/8	1 1/16	5 11/16	3/8	181
24.0	24.40	22 3/16	5MVC240S	S2	15-Arm	8 7/32	6 3/4	1/32	1 3/32	6 3/8	1 1/16	5 11/16	3/8	213
27.0	27.40	25 3/8	5MVC270S	S2	15-Arm	8 7/32	6 3/4	1/32	1 3/32	6 3/8	1 1/16	5 11/16	3/8	235
30.0	30.40	28 1/8	5MVC300S	S2	15-Arm	8 7/32	6 3/4	1/32	1 3/32	6 3/8	1 1/16	5 11/16	3/8	250
36.0	36.40	34 1/8	5MVC360S	S2	15-Arm	8 7/32	6 3/4	1/32	1 3/32	6 3/8	1 1/16	5 11/16	3/8	327
44.0	44.40	42 1/8	5MVC440U	U0	15-Arm	7 7/8	4 15/16	7/8	2 1/16	8 3/8	1 3/16	3 3/4	15/32	384
50.0	50.40	48 1/8	5MVC500U	U0	15-Arm	7 7/8	4 15/16	7/8	2 1/16	8 3/8	1 3/16	3 3/4	15/32	410
6 GROOVES, F = 9 17/32"														
8.0"	8.40"	6 1/4"	6MVC80R	R2	15-Web	9 17/32"	4 7/8"	3 1/32	1 5/8"	5 3/8"	7/8"	4"	9/32"	63
10.6	11.00	8 13/16	6MVC106R	R2	15-Web	9 17/32	4 7/8	3 1/32	1 5/8	5 3/8	7/8	4	9/32	93
11.0	11.40	9 1/4	6MVC110R	R2	15-Web	9 17/32	4 7/8	1 57/64	2 49/64	5 3/8	7/8	4	9/32	99
12.0	12.40	10 1/4	6MVC120R	R2	15-Web	9 17/32	4 7/8	1 57/64	2 49/64	5 3/8	7/8	4	9/32	100
14.0	14.40	12 5/16	6MVC140R	R2	15-Arm	9 17/32	4 7/8	1 57/64	2 49/64	5 3/8	7/8	4	9/32	118
16.0	16.40	14 3/16	6MVC160R	R2	15-Arm	9 17/32	4 7/8	1 57/64	2 49/64	5 3/8	7/8	4	9/32	128
18.0	18.40	16 3/8	6MVC180S	S2	15-Arm	9 17/32	6 3/4	55/64	1 59/64	6 3/8	1 1/16	5 11/16	3/8	176
20.0	20.40	18 3/16	6MVC200S	S2	15-Arm	9 17/32	6 3/4	55/64	1 59/64	6 3/8	1 1/16	5 11/16	3/8	199
24.0	24.40	22 3/16	6MVC240S	S2	15-Arm	9 17/32	6 3/4	55/64	1 59/64	6 3/8	1 1/16	5 11/16	3/8	241
36.0	36.40	34 1/8	6MVC360S	S2	15-Arm	9 17/32	6 3/4	55/64	1 59/64	6 3/8	1 1/16	5 11/16	3/8	378

Bushing Bores

Table No. 2

Bushing No.	Bore Range
R2	1 3/8" — 3 5/8"
S2	1 7/8" — 4 3/16"
U0	2 3/8" — 5 1/2"
U1	2 3/8" — 5 1/2"

Standard Keyseats

Table No. 3

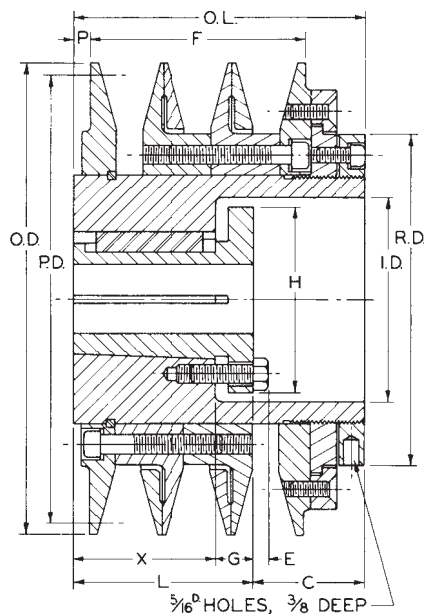
Bore Range	Keyseat	Bore Range	Keyseat
1 3/8"	5/16" x 5/32"	2 13/16" - 3 1/4"	3/4 x 3/8"
1 7/16" — 1 3/4"	3/8 x 3/16	3 3/8 — 3 3/4	7/8 x 7/16
1 13/16 — 2 1/4	1/2 x 1/4	3 7/8 — 4 1/2	1 x 1/2
2 5/16 — 2 3/4	5/8 x 5/16	4 5/8 — 5 1/2	1 1/4 x 5/8

MVP[®] Sheaves for 358 Narrow GRIPBELTS[®] V-belts

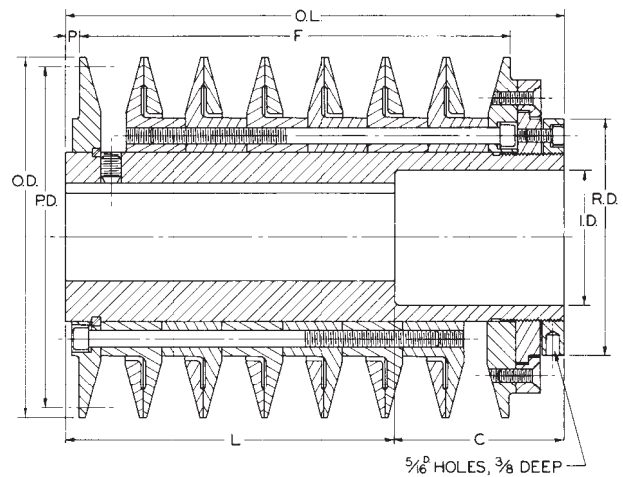


The BROWNING[®] MVP[®] Sheave consists of a series of angular faced flanges which are bolted to a fixed flange and another series of angular faced flanges which are bolted to a threaded collar. When the threaded collar is turned clockwise it moves the angular faced flanges closer together causing the belts to ride higher in the groove, increasing the pitch diameter. When turned counter clockwise it moves the flanges apart allowing the belt to ride lower in the groove, decreasing the pitch diameter. The threaded flange is equipped with the BROWNING Patented Locking Collar so that when the desired pitch diameter is attained by turning the threaded collar the movable flanges can be securely locked in place. The pitch diameter is infinitely adjustable between the minimum setting. And..... ALL BROWNING[®] MVP[®] SHEAVES ARE DYNAMICALLY BALANCED.

- More Power in less space.
- Smaller, lighter weight drives are possible.
- Bearing overhang is not as great as with conventional V-belts.
- More effectively utilize T-Frame motors.



Bushing Type



Finished Bore Type

STOCK BUSHED TYPE AND FINISHED BORE MVP® SHEAVES for “5V” BELTS DYNAMICALLY BALANCED

Table No. 1 Specifications — Bushing Type

DIAMETERS				PART NUMBERS		DIMENSIONS										Wt. Less Bush.
Pitch Range “5V” Belts	Out- side	In- side	Ring (R.D.)	Sheave	Bush- ing*	O.L.	F		L	C	H	G	X	P	E	
							Max.	Min.								
3 GROOVES																
8.1” - 9.5”	9.6”	4 7/16”	6 1/2”	3MVP815V95Q	Q2	4 3/4”	3 1/2”	3 1/8”	3 1/2”	1 1/4”	4 1/8”	3/4”	2 3/4”	7/32”	9/32”	43.0
9.1 - 10.5	10.6	4 7/16”	6 1/2	3MVP915V105Q	Q2	4 3/4	3 1/2	3 1/8	3 1/2	1 1/4	4 1/8	3/4	2 3/4	7/32	9/32	55.0
10.1 - 11.5	11.6	4 7/16”	6 1/2	3MVP1015V115Q	Q2	4 3/4	3 1/2	3 1/8	3 1/2	1 1/4	4 1/8	3/4	2 3/4	7/32	9/32	70.0
11.1 - 12.5	12.6	4 7/16”	6 1/2	3MVP1115V125Q	Q2	4 3/4	3 1/2	3 1/8	3 1/2	1 1/4	4 1/8	3/4	2 3/4	7/32	9/32	88.0

*Bore Range of “Q2” Bushing is 1” — 2 5/8”.

Table No. 2 Specifications - Finished Bore Type

DIAMETERS				Part Numbers	DIMENSIONS				STOCK BORES MARKED “X”						Wt. Lbs.	
Pitch Range “5V” Belts	Out- side	In- side	Ring (R.D.)		O.L.	F		P	1 7/8”	2 1/8”	2 3/8”	2 7/8”	3 3/8”	3 7/8”		
				Max.		Min.										
4 GROOVES																
8.1” - 9.5”	9.6”	4 7/16”	6 1/2”	4MVP815V95	5 7/8”	4 5/8”	4 1/4”	7/32”	—	x	x	—	—	—	—	65.0
9.1 - 10.5	10.6	4 7/16”	6 1/2	4MVP915V105	5 7/8	4 5/8	4 1/4	7/32	—	x	x	—	—	—	—	77.0
10.1 - 11.5	11.6	4 7/16”	6 1/2	4MVP1015V115	5 7/8	4 5/8	4 1/4	7/32	—	—	x	x	—	—	—	88.0
11.1 - 12.5	12.6	4 7/16”	6 1/2	4MVP1115V125	5 7/8	4 5/8	4 1/4	7/32	—	—	—	x	x	—	—	100
5 GROOVES																
8.1” - 9.5”	9.6”	4 7/16”	6 1/2”	5MVP815V95	7”	5 3/4”	5 3/8”	7/32”	—	—	x	x	—	—	—	75.0
9.1 - 10.5	10.6	4 7/16”	6 1/2	5MVP915V105	7	5 3/4	5 3/8	7/32	—	—	x	x	—	—	—	87.0
10.1 - 11.5	11.6	4 7/16”	6 1/2	5MVP1015V115	7	5 3/4	5 3/8	7/32	—	—	—	x	x	—	—	100
11.1 - 12.5	12.6	4 7/16”	6 1/2	5MVP1115V125	7	5 3/4	5 3/8	7/32	—	—	—	x	x	—	—	120
6 GROOVES																
8.1” - 9.5”	9.6”	4 7/16”	6 1/2”	6MVP815V95	8 1/8”	6 7/8”	6 1/2”	7/32”	—	—	x	x	—	—	—	80.0
9.1 - 10.5	10.6	4 7/16”	6 1/2	6MVP915V105	8 1/8	6 7/8	6 1/2	7/32	—	—	x	x	x	—	—	99.0
10.1 - 11.5	11.6	4 7/16”	6 1/2	6MVP1015V115	8 1/8	6 7/8	6 1/2	7/32	—	—	—	x	x	—	—	110
11.1 - 12.5	12.6	4 7/16”	6 1/2	6MVP1115V125	8 1/8	6 7/8	6 1/2	7/32	—	—	—	x	x	x	—	135
8 GROOVES																
8.1” - 9.5”	9.6”	4 7/16”	6 1/2”	8MVP815V95	10 3/8”	9 1/8”	8 3/4”	7/32”	—	—	—	x	x	—	—	102
9.1 - 10.5	10.6	4 7/16”	6 1/2	8MVP915V105	10 3/8	9 1/8	8 3/4	7/32	—	—	—	x	x	—	—	123
10.1 - 11.5	11.6	4 7/16”	6 1/2	8MVP1015V115	10 3/8	9 1/8	8 3/4	7/32	—	—	—	x	x	—	—	147
11.1 - 12.5	12.6	4 7/16”	6 1/2	8MVP1115V125	10 3/8	9 1/8	8 3/4	7/32	—	—	—	—	x	x	—	171
10 GROOVES																
8.1” - 9.5”	9.6”	4 7/16”	6 1/2”	10MVP815V95	12 5/8”	11 3/8”	11”	7/32”	—	—	—	—	x	—	—	120
9.1 - 10.5	10.6	4 7/16”	6 1/2	10MVP915V105	12 5/8	11 3/8	11	7/32	—	—	—	—	x	—	—	148
10.1 - 11.5	11.6	4 7/16”	6 1/2	10MVP1015V115	12 5/8	11 3/8	11	7/32	—	—	—	—	x	x	—	175
11.1 - 12.5	12.6	4 7/16”	6 1/2	10MVP1115V125	12 5/8	11 3/8	11	7/32	—	—	—	—	x	x	—	205

Browning Finished Bore “MVP” Sheaves are furnished with standard keyseats and two hollow head set screws. Pitch diameter is indefinitely adjustable within the pitch range, .233” change per turn of the adjusting ring.

Standard Keyseats

Bore	Keyseat
1” — 1 1/4”	1/4” x 1/8”
1 5/16 — 1 3/8	5/16 x 5/32
1 7/16 — 1 3/4	3/8 x 3/16
1 13/16 — 2 1/4	1/2 x 1/4
2 5/16 — 2 5/8	5/8 x 5/16
2 7/8	3/4 x 3/8
3 3/8	7/8 x 7/16

1 3/8” Bore is also available with 3/8” x 3/16” Kw.

Table No. 4

“L” and “C” Dimensions

NO. GROOVES	BORES									
	1 7/8”		2 1/8”		2 3/8”		2 7/8”		3 3/8”	
	L	C	L	C	L	C	L	C	L	C
4	4 3/8”	1 1/2”	5”	7/8”	5 5/8”	1/4”	5 7/8”	0	—	—
5	—	—	5	2	5 5/8	1 3/8	6 3/8	5/8”	6 3/8”	5/8”
6	—	—	5	3 1/8	5 5/8	2 1/2	6 3/8	1 3/4”	6 3/8”	1 3/4
8	—	—	—	—	5 5/8	4 3/4	7	3 3/8	8 1/4	2 1/8
10	—	—	—	—	—	—	7	5 3/8	8 1/4	4 3/8

Dimensions shown above are for sheaves with Number of Grooves and Bore indicated; for example, a 6MVP815V95 x 2 1/8 Sheave has a 5” “L” Dimension and 3 1/8” “C” Dimension.

STOCK COMPANION SHEAVES for "5V" BELTS

Bushing Bores

Table No. 1

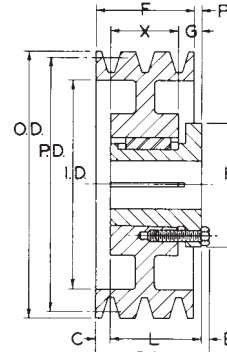
Bushing No.	Bore Range
R1	1 1/8" - 3 3/4"
S1	1 11/16 - 4 1/4
U0	2 3/8 - 5 1/2

Standard Keyseats

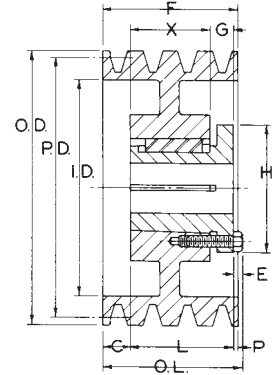
Table No. 2

Bore Range	Keyseat
1 1/8" to 1 1/4"	1/4" x 1/8"
1 5/16 to 1 3/8	5/16 x 5/32
1 7/16 to 1 3/4	3/8 x 3/16
1 13/16 to 2 1/4	1/2 x 1/4
2 5/16 to 2 3/4	5/8 x 5/16
2 13/16 to 3 1/4	3/4 x 3/8
3 3/8 to 3 3/4	7/8 x 7/16
3 7/8 to 4 1/2	1 x 1/2
4 5/8 to 5 1/2	1 1/4 x 5/8

1 3/8" Bore Bushings (Except R2) also available with 3/8" x 3/16" Keyseat.



Type 13



Type 15

Table No. 3

Specifications

DIAMETERS			PART NUMBER		Type	DIMENSIONS									Wt. Less Bush.
Pitch "5V" Belts	Outside	Inside	Sheave	Bushing		O.L.	L	P	C*	H	G	X	E		
3 GROOVES, F = 3 1/4"															
7.90"	8.00"	6 1/4"	3MV5V80R	R1	13-Web	3 25/32"	2 7/8"	1/4"	5/8"	5 3/8"	7/8"	2"	9/32"	22.2	
8.40	8.50	6 3/4	3MV5V85R	R1	13-Web	3 25/32	2 7/8	1/4	5/8	5 3/8	7/8	2	9/32	26.2	
8.90	9.00	7 1/4	3MV5V90R	R1	13-Web	3 25/32	2 7/8	1/4	5/8	5 3/8	7/8	2	9/32	25.6	
9.15	9.25	7 3/8	3MV5V92R	R1	13-Web	3 25/32	2 7/8	1/4	5/8	5 3/8	7/8	2	9/32	27.6	
9.65	9.75	7 7/8	3MV5V97R	R1	13-Web	3 25/32	2 7/8	1/4	5/8	5 3/8	7/8	2	9/32	29.8	
10.20	10.30	8 7/16	3MV5V103R	R1	13-Web	3 25/32	2 7/8	1/4	5/8	5 3/8	7/8	2	9/32	32.2	
10.80	10.90	9	3MV5V109R	R1	13-Web	3 25/32	2 7/8	1/4	5/8	5 3/8	7/8	2	9/32	35.4	
11.70	11.80	10	3MV5V118R	R1	13-Web	3 25/32	2 7/8	1/4	5/8	5 3/8	7/8	2	9/32	38.9	
12.40	12.50	10 3/4	3MV5V125R	R1	13-Web	3 25/32	2 7/8	1/4	5/8	5 3/8	7/8	2	9/32	41.9	
13.10	13.20	11 7/16	3MV5V132R	R1	13-Arm	3 25/32	2 7/8	1/4	5/8	5 3/8	7/8	2	9/32	34.9	
13.90	14.00	12 1/4	3MV5V140R	R1	13-Arm	3 25/32	2 7/8	1/4	5/8	5 3/8	7/8	2	9/32	37.6	
14.90	15.00	13 1/4	3MV5V150R	R1	13-Arm	3 25/32	2 7/8	1/4	5/8	5 3/8	7/8	2	9/32	41.6	
15.90	16.00	14 1/4	3MV5V160R	R1	13-Arm	3 25/32	2 7/8	1/4	5/8	5 3/8	7/8	2	9/32	45.7	
17.90	18.00	16 1/4	3MV5V180R	R1	13-Arm	3 25/32	2 7/8	1/4	5/8	5 3/8	7/8	2	9/32	51.5	
19.90	20.00	18 1/4	3MV5V200R	R1	13-Arm	3 25/32	2 7/8	1/4	5/8	5 3/8	7/8	2	9/32	55.0	
21.10	21.20	19 3/8	3MV5V212S	S1	13-Arm	4 3/4	4 3/8	1 3/32	1/32 P	6 3/8	1 1/16	3 5/16	3/8	90.5	
23.90	24.00	22 1/4	3MV5V240S	S1	13-Arm	4 3/4	4 3/8	1 3/32	1/32 P	6 3/8	1 1/16	3 5/16	3/8	99.2	
27.90	28.00	26 1/4	3MV5V280S	S1	13-Arm	4 3/4	4 3/8	1 3/32	1/32 P	6 3/8	1 1/16	3 5/16	3/8	110	
29.90	30.00	28 1/4	3MV5V300S	S1	13-Arm	4 3/4	4 3/8	1 3/32	1/32 P	6 3/8	1 1/16	3 5/16	3/8	122	
37.40	37.50	35 3/4	3MV5V375U	U0	13-Arm	5 13/32	4 15/16	1 7/16	1/4 P	8 3/8	1 3/16	3 3/4	15/32	179	
43.90	44.00	42 1/4	3MV5V440U	U0	13-Arm	5 13/32	4 15/16	1 7/16	1/4 P	8 3/8	1 3/16	3 3/4	15/32	207	
49.90	50.00	48 1/4	3MV5V500U	U0	13-Arm	5 13/32	4 15/16	1 7/16	1/4 P	8 3/8	1 3/16	3 3/4	15/32	233	
4 GROOVES, F = 4 3/8"															
7.90"	8.00"	6 1/4"	4MV5V80R	R1	15-Web	4 3/8"	2 7/8"	5/16"	1 3/16"	5 3/8"	7/8"	2"	9/32"	27.0	
8.40	8.50	6 3/4	4MV5V85R	R1	15-Web	4 3/8	2 7/8	5/16	1 3/16	5 3/8	7/8	2	9/32	30.9	
8.90	9.00	7 1/4	4MV5V90R	R1	15-Web	4 3/8	2 7/8	5/16	1 3/16	5 3/8	7/8	2	9/32	30.8	
9.15	9.25	7 3/8	4MV5V92R	R1	15-Web	4 3/8	2 7/8	5/16	1 3/16	5 3/8	7/8	2	9/32	33.5	
9.65	9.75	7 7/8	4MV5V97R	R1	15-Web	4 3/8	2 7/8	5/16	1 3/16	5 3/8	7/8	2	9/32	36.0	
10.20	10.30	8 7/16	4MV5V103R	R1	15-Web	4 3/8	2 7/8	5/16	1 3/16	5 3/8	7/8	2	9/32	38.0	
10.80	10.90	9	4MV5V109R	R1	15-Web	4 3/8	2 7/8	5/16	1 3/16	5 3/8	7/8	2	9/32	42.5	
11.70	11.80	10	4MV5V118R	R1	15-Web	4 3/8	2 7/8	5/16	1 3/16	5 3/8	7/8	2	9/32	46.1	
12.40	12.50	10 3/4	4MV5V125R	R1	15-Web	4 3/8	2 7/8	5/16	1 3/16	5 3/8	7/8	2	9/32	53.5	
13.10	13.20	11 7/16	4MV5V132R	R1	15-Arm	4 3/8	2 7/8	5/16	1 3/16	5 3/8	7/8	2	9/32	42.9	
13.90	14.00	12 1/4	4MV5V140R	R1	15-Arm	4 3/8	2 7/8	5/16	1 3/16	5 3/8	7/8	2	9/32	46.1	
14.90	15.00	13 1/4	4MV5V150R	R1	15-Arm	4 3/8	2 7/8	5/16	1 3/16	5 3/8	7/8	2	9/32	50.7	
15.90	16.00	14 1/4	4MV5V160R	R1	15-Arm	4 3/8	2 7/8	5/16	1 3/16	5 3/8	7/8	2	9/32	55.4	
17.90	18.00	16 1/4	4MV5V180R	R1	15-Arm	4 3/8	2 7/8	5/16	1 3/16	5 3/8	7/8	2	9/32	64.2	
19.90	20.00	18 1/4	4MV5V200R	R1	15-Arm	4 3/8	2 7/8	5/16	1 3/16	5 3/8	7/8	2	9/32	73.8	
21.10	21.20	19 3/8	4MV5V212S	S1	13-Arm	5 9/32	4 3/8	17/32	17/32	6 3/8	1 1/16	3 5/16	3/8	104	
23.90	24.00	22 1/4	4MV5V240S	S1	13-Arm	5 9/32	4 3/8	17/32	17/32	6 3/8	1 1/16	3 5/16	3/8	114	
27.90	28.00	26 1/4	4MV5V280S	S1	13-Arm	5 9/32	4 3/8	17/32	17/32	6 3/8	1 1/16	3 5/16	3/8	140	
29.90	30.00	28 1/4	4MV5V300S	S1	13-Arm	5 9/32	4 3/8	17/32	17/32	6 3/8	1 1/16	3 5/16	3/8	151	
37.40	37.50	35 3/4	4MV5V375U	U0	13-Arm	5 23/32	4 15/16	7/8	5/16	8 3/8	1 3/16	3 3/4	15/32	209	
43.90	44.00	42 1/4	4MV5V440U	U0	13-Arm	5 23/32	4 15/16	7/8	5/16	8 3/8	1 3/16	3 3/4	15/32	252	
49.90	50.00	48 1/4	4MV5V500U	U0	13-Arm	5 23/32	4 15/16	7/8	5/16	8 3/8	1 3/16	3 3/4	15/32	306	

*"C" dimension followed by "P" indicates that the hub projects by the amount shown.

STOCK COMPANION SHEAVES for "5V" BELTS



Bushing Bores

Table No. 1

Bushing No.	Bore Range
R2	1 3/8" - 3 5/8"
S1	1 11/16" - 4 1/4"
S2	1 7/8" - 4 3/16"
U0	2 3/8" - 5 1/2"
U1	2 3/8" - 5 1/2"

Standard Keyseats

Table No. 2

Bore Range	Keyseat
1 3/8"	5/16" x 5/32"
1 7/16" - 1 3/4"	3/8 x 3/16
1 13/16" - 2 1/4"	1/2 x 1/4
2 5/16" - 2 3/4"	5/8 x 5/16
2 13/16" - 3 1/4"	3/4 x 3/8
3 3/8" - 3 3/4"	7/8 x 7/16
3 7/8" - 4 1/2"	1 x 1/2
4 5/8" - 5 1/2"	1 1/4 x 5/8

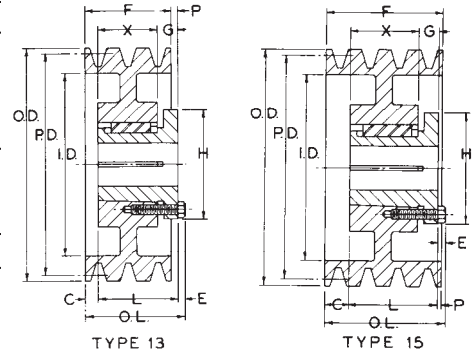


Table No. 3

Specifications

DIAMETERS			PART NUMBER		Type	DIMENSIONS								Wt. Less Bush.
Pitch "5V" Belts	Out-side	In-side	Sheave	Bush-ing		O.L.	L	P	C	H	G	X	E	
5 GROOVES, F= 5 1/2"														
7.90"	8.00"	6 1/4"	5MV5V80R	R2	13-Web	5 29/32"	4 7/8"	1/8"	3/4"	5 3/8"	7/8"	4"	9/32"	41.0
8.40	8.50	6 3/4"	5MV5V85R	R2	13-Web	5 29/32	4 7/8	1/8	3/4	5 3/8	7/8	4	9/32	47.9
8.90	9.00	7 1/4"	5MV5V90R	R2	13-Web	5 29/32	4 7/8	1/8	3/4	5 3/8	7/8	4	9/32	44.2
9.15	9.25	7 3/8"	5MV5V92R	R2	13-Web	5 29/32	4 7/8	1/8	3/4	5 3/8	7/8	4	9/32	48.6
9.65	9.75	7 7/8"	5MV5V97R	R2	13-Web	5 29/32	4 7/8	1/8	3/4	5 3/8	7/8	4	9/32	51.6
10.20	10.30	8 7/16"	5MV5V103R	R2	13-Web	5 29/32	4 7/8	1/8	3/4	5 3/8	7/8	4	9/32	55.2
10.80	10.90	9	5MV5V109R	R2	13-Web	5 29/32	4 7/8	1/8	3/4	5 3/8	7/8	4	9/32	60.0
11.70	11.80	10	5MV5V118S	S1	15-Web	5 27/32	4 3/8	1/32	1 3/32	6 3/8	1 1/16	3 5/16	3/8	71.6
12.40	12.50	10 3/4"	5MV5V125S	S1	15-Web	5 27/32	4 3/8	1/32	1 3/32	6 3/8	1 1/16	3 5/16	3/8	79.2
13.10	13.20	11 7/16"	5MV5V132S	S1	15-Web	5 27/32	4 3/8	1/32	1 3/32	6 3/8	1 1/16	3 5/16	3/8	81.5
13.90	14.00	12 1/4"	5MV5V140S	S1	15-Arm	5 27/32	4 3/8	1/32	1 3/32	6 3/8	1 1/16	3 5/16	3/8	73.6
14.90	15.00	13 1/4"	5MV5V150S	S1	15-Arm	5 27/32	4 3/8	1/32	1 3/32	6 3/8	1 1/16	3 5/16	3/8	78.4
15.90	16.00	14 1/4"	5MV5V160S	S1	15-Arm	5 27/32	4 3/8	1/32	1 3/32	6 3/8	1 1/16	3 5/16	3/8	83.5
17.90	18.00	16 1/4"	5MV5V180S	S1	15-Arm	5 27/32	4 3/8	1/32	1 3/32	6 3/8	1 1/16	3 5/16	3/8	95.4
19.90	20.00	18 1/4"	5MV5V200S	S1	15-Arm	5 27/32	4 3/8	1/32	1 3/32	6 3/8	1 1/16	3 5/16	3/8	105
21.10	21.20	19 3/8"	5MV5V212U	U0	13-Arm	6 9/32	4 15/16	5/16	7/8	8 3/8	1 3/16	3 3/4	15/32	135
23.90	24.00	22 1/4"	5MV5V240U	U0	13-Arm	6 9/32	4 15/16	5/16	7/8	8 3/8	1 3/16	3 3/4	15/32	151
27.90	28.00	26 1/4"	5MV5V280U	U0	13-Arm	6 9/32	4 15/16	5/16	7/8	8 3/8	1 3/16	3 3/4	15/32	186
29.90	30.00	28 1/4"	5MV5V300U	U0	13-Arm	6 9/32	4 15/16	5/16	7/8	8 3/8	1 3/16	3 3/4	15/32	199
37.40	37.50	35 3/4"	5MV5V375U	U0	13-Arm	6 9/32	4 15/16	5/16	7/8	8 3/8	1 3/16	3 3/4	15/32	239
43.90	44.00	42 1/4"	5MV5V440U	U0	13-Arm	6 9/32	4 15/16	5/16	7/8	8 3/8	1 3/16	3 3/4	15/32	250
49.90	50.00	48 1/4"	5MV5V500U	U0	13-Arm	6 9/32	4 15/16	5/16	7/8	8 3/8	1 3/16	3 3/4	15/32	325
6 GROOVES, F= 6 5/8"														
7.90"	8.00"	6 1/4"	6MV5V80R	R2	15-Web	6 5/8"	4 7/8"	7/16"	1 5/16"	5 3/8"	7/8"	4"	9/32"	45.5
8.40	8.50	6 3/4"	6MV5V85R	R2	15-Web	6 5/8	4 7/8	7/16	1 5/16	5 3/8	7/8	4	9/32	52.8
8.90	9.00	7 1/4"	6MV5V90R	R2	15-Web	6 5/8	4 7/8	7/16	1 5/16	5 3/8	7/8	4	9/32	53.7
9.15	9.25	7 3/8"	6MV5V92R	R2	15-Web	6 5/8	4 7/8	7/16	1 5/16	5 3/8	7/8	4	9/32	57.2
9.65	9.75	7 7/8"	6MV5V97R	R2	15-Web	6 5/8	4 7/8	7/16	1 5/16	5 3/8	7/8	4	9/32	60.4
10.20	10.30	8 7/16"	6MV5V103R	R2	15-Web	6 5/8	4 7/8	7/16	1 5/16	5 3/8	7/8	4	9/32	63.5
10.80	10.90	9	6MV5V109R	R2	15-Web	6 5/8	4 7/8	7/16	1 5/16	5 3/8	7/8	4	9/32	67.1
11.70	11.80	10	6MV5V118S	S1	15-Web	6 5/8	4 3/8	19/32	1 21/32	6 3/8	1 1/16	3 5/16	3/8	78.9
12.40	12.50	10 3/4"	6MV5V125S	S1	15-Web	6 5/8	4 3/8	7/8	1 3/8	6 3/8	1 1/16	3 5/16	3/8	107
13.10	13.20	11 7/16"	6MV5V132S	S1	15-Web	6 5/8	4 3/8	1 1/2	3/4	6 3/8	1 1/16	3 5/16	3/8	121
13.90	14.00	12 1/4"	6MV5V140S	S1	15-Web	6 5/8	4 3/8	1 1/2	3/4	6 3/8	1 1/16	3 5/16	3/8	137
14.90	15.00	13 1/4"	6MV5V150S	S1	15-Web	6 5/8	4 3/8	1 1/2	3/4	6 3/8	1 1/16	3 5/16	3/8	105
15.90	16.00	14 1/4"	6MV5V160S	S1	15-Web	6 5/8	4 3/8	1 1/2	3/4	6 3/8	1 1/16	3 5/16	3/8	115
17.90	18.00	16 1/4"	6MV5V180S	S2	13-Arm	7 19/32	6 3/4	19/32	15/32	6 3/8	1 1/16	5 11/16	3/8	125
19.90	20.00	18 1/4"	6MV5V200S	S2	13-Arm	7 19/32	6 3/4	19/32	15/32	6 3/8	1 1/16	5 11/16	3/8	140
21.10	21.20	19 3/8"	6MV5V212U	U0	15-Arm	6 27/32	4 15/16	1/4	1 7/16	8 3/8	1 3/16	3 3/4	15/32	149
23.90	24.00	22 1/4"	6MV5V240U	U0	15-Arm	6 27/32	4 15/16	1/4	1 7/16	8 3/8	1 3/16	3 3/4	15/32	163
27.90	28.00	26 1/4"	6MV5V280U	U0	15-Arm	6 27/32	4 15/16	1/4	1 7/16	8 3/8	1 3/16	3 3/4	15/32	195
29.90	30.00	28 1/4"	6MV5V300U	U0	15-Arm	6 27/32	4 15/16	1/4	1 7/16	8 3/8	1 3/16	3 3/4	15/32	208
37.40	37.50	35 3/4"	6MV5V375U	U1	13-Arm	8 3/32	7 1/8	1	1/2	8 3/8	1 1/2	5 5/8	15/32	288
43.90	44.00	42 1/4"	6MV5V440U	U1	13-Arm	8 3/32	7 1/8	1	1/2	8 3/8	1 1/2	5 5/8	15/32	342
49.90	50.00	48 1/4"	6MV5V500U	U1	13-Arm	8 3/32	7 1/8	1	1/2	8 3/8	1 1/2	5 5/8	15/32	382

STOCK COMPANION SHEAVES for "5V" BELTS

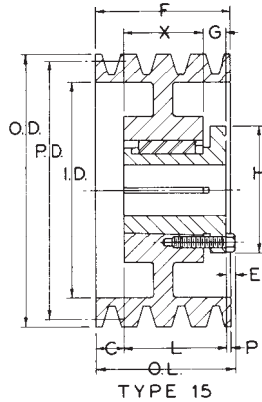


Table No. 1

Specifications

DIAMETERS			PART NUMBER		Type	DIMENSIONS								Wt. Less Bush.
Pitch "5V" Belts	Out-side	In-side	Sheave	Bush-ing		O.L.	L	P	C	H	G	X	E	
8 GROOVES, F = 8 7/8"														
8.90"	9.00"	7 1/4"	8MV5V90S	S2	15-Web	8 7/8"	6 3/4"	17/32"	1 19/32"	6 3/8"	1 1/16"	5 11/16"	3/8"	77
9.15	9.25	7 3/8	8MV5V92S	S2	15-Web	8 7/8	6 3/4	17/32	1 19/32	6 3/8	1 1/16	5 11/16	3/8	84
9.65	9.75	7 7/8	8MV5V97S	S2	15-Web	8 7/8	6 3/4	17/32	1 19/32	6 3/8	1 1/16	5 11/16	3/8	95
10.20	10.30	8 7/16	8MV5V103S	S2	15-Web	8 7/8	6 3/4	17/32	1 19/32	6 3/8	1 1/16	5 11/16	3/8	109
10.80	10.90	9	8MV5V109S	S2	15-Web	8 7/8	6 3/4	17/32	1 19/32	6 3/8	1 1/16	5 11/16	3/8	125
11.70	11.80	10	8MV5V118S	S2	15-Web	8 7/8	6 3/4	3/4	1 3/8	6 3/8	1 1/16	5 11/16	3/8	148
12.40	12.50	10 3/4	8MV5V125S	S2	15-Web	8 7/8	6 3/4	3/4	1 3/8	6 3/8	1 1/16	5 11/16	3/8	168
13.10	13.20	11 7/16	8MV5V132S	S2	15-Web	8 7/8	6 3/4	1 3/8	3/4	6 3/8	1 1/16	5 11/16	3/8	190
13.90	14.00	12 1/4	8MV5V140S	S2	15-Web	8 7/8	6 3/4	1 3/8	3/4	6 3/8	1 1/16	5 11/16	3/8	216
14.90	15.00	13 1/4	8MV5V150S	S2	15-Web	8 7/8	6 3/4	1 3/8	3/4	6 3/8	1 1/16	5 11/16	3/8	150
15.90	16.00	14 1/4	8MV5V160S	S2	15-Web	8 7/8	6 3/4	1 3/8	3/4	6 3/8	1 1/16	5 11/16	3/8	162
17.90	18.00	16 1/4	8MV5V180S	S2	15-Arm	8 7/8	6 3/4	17/32	1 19/32	6 3/8	1 1/16	5 11/16	3/8	152
19.90	20.00	18 1/4	8MV5V200U	U0	15-Arm	8 7/8	4 15/16	1 3/8	2 9/16	8 3/8	1 3/16	3 3/4	15/32	164
21.10	21.20	19 3/8	8MV5V212U	U1	15-Arm	9 7/32	7 1/8	1/8	1 5/8	8 3/8	1 1/2	5 5/8	15/32	208
23.90	24.00	22 1/4	8MV5V240U	U1	15-Arm	9 7/32	7 1/8	1/8	1 5/8	8 3/8	1 1/2	5 5/8	15/32	227
27.90	28.00	26 1/4	8MV5V280U	U1	15-Arm	9 7/32	7 1/8	1/8	1 5/8	8 3/8	1 1/2	5 5/8	15/32	273
29.90	30.00	28 1/4	8MV5V300U	U1	15-Arm	9 7/32	7 1/8	1/8	1 5/8	8 3/8	1 1/2	5 5/8	15/32	286
37.40	37.50	35 3/4	8MV5V375U	U1	15-Arm	9 7/32	7 1/8	1/8	1 5/8	8 3/8	1 1/2	5 5/8	15/32	358
43.90	44.00	42 1/4	8MV5V440U	U1	15-Arm	9 7/32	7 1/8	1/8	1 5/8	8 3/8	1 1/2	5 5/8	15/32	416
49.90	50.00	48 1/4	8MV5V500U	U1	15-Arm	9 7/32	7 1/8	1/8	1 5/8	8 3/8	1 1/2	5 5/8	15/32	481
10 GROOVES, F = 11 1/8"														
8.90"	9	7 1/4"	10MV5V90S	S2	15-Web	11 1/8"	6 3/4"	2 3/8"	2"	6 3/8"	1 1/16"	5 11/16"	3/8"	88
9.15	9.25	7 3/8	10MV5V92S	S2	15-Web	11 1/8	6 3/4	2 3/8	2	6 3/8	1 1/16	5 11/16	3/8	96
9.65	9.75	7 7/8	10MV5V97S	S2	15-Web	11 1/8	6 3/4	2 3/8	2	6 3/8	1 1/16	5 11/16	3/8	108
10.20	10.3	8 7/16	10MV5V103S	S2	15-Web	11 1/8	6 3/4	2 3/8	2	6 3/8	1 1/16	5 11/16	3/8	122
10.80	10.9	9	10MV5V109S	S2	15-Web	11 1/8	6 3/4	2 3/8	2	6 3/8	1 1/16	5 11/16	3/8	139
11.70	11.80	10	10MV5V118S	S2	15-Web	11 1/8	6 3/4	3	1 3/8	6 3/8	1 1/16	5 11/16	3/8	163
12.40	12.50	10 3/4	10MV5V125U	U1	15-Web	11 1/8	7 1/8	1 1/4	2 3/4	8 3/8	1 1/2	5 5/8	15/32	166
13.10	13.20	11 7/16	10MV5V132U	U1	15-Web	11 1/8	7 1/8	3	1	8 3/8	1 1/2	5 5/8	15/32	189
13.90	14.00	12 1/4	10MV5V140U	U1	15-Web	11 1/8	7 1/8	3	1	8 3/8	1 1/2	5 5/8	15/32	215
14.90	15.00	13 1/4	10MV5V150U	U1	15-Web	11 1/8	7 1/8	3	1	8 3/8	1 1/2	5 5/8	15/32	251
15.90	16.00	14 1/4	10MV5V160U	U1	15-Web	11 1/8	7 1/8	3	1	8 3/8	1 1/2	5 5/8	15/32	289
17.90	18.00	16 1/4	10MV5V180U	U1	15-Arm	11 1/8	7 1/8	1 1/4	2 3/4	8 3/8	1 1/2	5 5/8	15/32	222
19.90	20.00	18 1/4	10MV5V200U	U1	15-Arm	11 1/8	7 1/8	1 1/4	2 3/4	8 3/8	1 1/2	5 5/8	15/32	244
21.10	21.20	19 3/8	10MV5V212U	U1	15-Arm	11 1/8	7 1/8	1 1/4	2 3/4	8 3/8	1 1/2	5 5/8	15/32	232
23.90	24.00	22 1/4	10MV5V240U	U1	15-Arm	11 1/8	7 1/8	1 1/4	2 3/4	8 3/8	1 1/2	5 5/8	15/32	252
27.90	28.00	26 1/4	10MV5V280U	U1	15-Arm	11 1/8	7 1/8	1 1/4	2 3/4	8 3/8	1 1/2	5 5/8	15/32	304
29.90	30.00	28 1/4	10MV5V300U	U1	15-Arm	11 1/8	7 1/8	1 1/4	2 3/4	8 3/8	1 1/2	5 5/8	15/32	334
37.40	37.50	35 3/4	10MV5V375U	U1	15-Arm	11 1/8	7 1/8	1 1/4	2 3/4	8 3/8	1 1/2	5 5/8	15/32	413
43.90	44.00	42 1/4	10MV5V440U	U1	15-Arm	11 1/8	7 1/8	1 1/4	2 3/4	8 3/8	1 1/2	5 5/8	15/32	548
49.90	50.00	48 1/4	10MV5V500U	U1	15-Arm	11 1/8	7 1/8	1 1/4	2 3/4	8 3/8	1 1/2	5 5/8	15/32	687

Bushing Bores

Table No. 2

Bushing No.	Bore Range
S2	1 7/8" - 4 3/16"
U0	2 3/8" - 5 1/2"
U1	2 3/8" - 5 1/2"

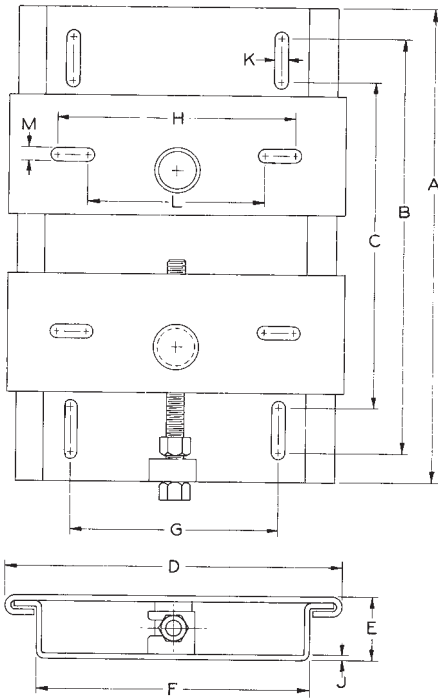
Standard Keyseats

Table No. 3

Bore Range	Keyseat	Bore Range	Keyseat
1 7/8" - 2 1/4"	1/2" x 1/4"	3 3/8" - 3 3/4"	7/8" x 7/16"
2 5/16" - 2 3/4"	5/8 x 5/16	3 7/8" - 4 1/2"	1 x 1/2
2 13/16" - 3 1/4"	3/4 x 3/8	4 5/8" - 5 1/2"	1 1/4 x 5/8

Browning® Wide Range Variable Speed and MVP® Drives require provision for more take-up than normal V-Drives. The belt must be free of the sheave groove to allow for adjustment of pitch diameter. Also the drive must be adjusted to proper tension and seating of belts.

The use of Browning Sliding Motor Bases provides easy and rapid movement of the motor for making such adjustments. The adjusting screws can be quickly released, allowing maximum movement of the motor with only a few turns of the adjusting screws.

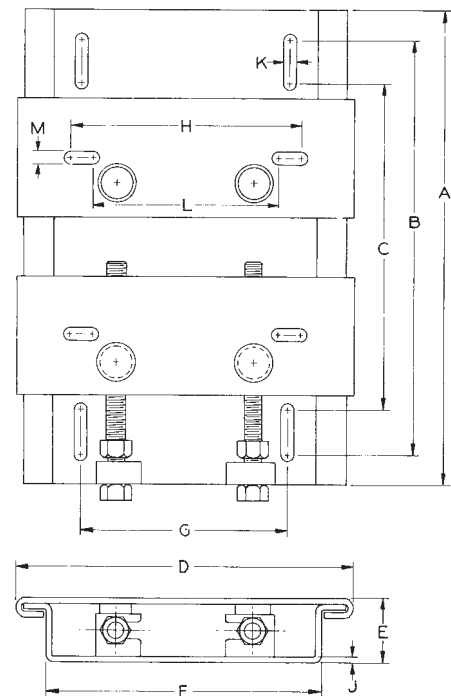


TYPE 1

REDESIGNED

**ALL STEEL
CONSTRUCTION**

**CADMIUM
PLATED
QUICK
RELEASE
ADJUSTING
SCREWS**



TYPE 2

Table No. 1

Specifications

Part No.	Motor Frame	Type	Adjustment	DIMENSIONS IN INCHES												Wt. Lbs
				A	B	C	D	E	F	G	H	J	K	L	M	
MB145TX	48	1	5 1/4"	12"	10"	7"	8 1/32"	1 11/16"	6 3/4"	4"	5 3/4"	1/8"	7/16"	2 3/4"	7/16"	6
	56		4 5/8													
MB215TX	143T, 145T	1	5	16	14	11	11 17/32	2 1/16	9 1/4	6 1/2	7	1/8	7/16	4	7/16	14
	182, 182T		5													
MB286TX	184, 184T	1	5	21	19	16 1/4	15 25/32	2 1/8	13 1/2	11 1/2	11	3/16	9/16	8 1/4	9/16	36
	213, 213T		4													
MB365TX	215, 215T	2	4	24	22	18	17 11/32	2 3/16	15	11 1/2	12 1/4	1/4	11/16	10 1/2	11/16	48
	254T, 254U		6 1/2													
MB286TX	256T, 256U	1	6 1/2	21	19	16 1/4	15 25/32	2 1/8	13 1/2	11 1/2	11	3/16	9/16	8 1/4	9/16	36
	284T, 284U		5 1/2													
MB365TX	286T, 286U	2	5 1/2	24	22	18	17 11/32	2 3/16	15	11 1/2	12 1/4	1/4	11/16	10 1/2	11/16	48
	324T, 324U		7													
MB365TX	326T, 326U	2	7	24	22	18	17 11/32	2 3/16	15	11 1/2	12 1/4	1/4	11/16	10 1/2	11/16	48
	364T, 364U		5 1/2													
MB365TX	365T, 365U	2	5 1/2	24	22	18	17 11/32	2 3/16	15	11 1/2	12 1/4	1/4	11/16	10 1/2	11/16	48