

Model Number:  
**OWC1811QC**

**OceanAire**

PROVIDING A BETTER CLIMATE ANYWHERE.



## 1.5 Ton Deluxe Portable Water-Cooled Air Conditioner

### Product Features:

- Solid State Electronic Controller
- Manual or Auto 6-Speed Fan Control
- Large LED Display
- Swivel Ball Bearing Casters with Locking Fronts
- Internal Condensate Pump with Overflow Alert
- Water Regulating Valve
- High Pressure Safety Switch
- Washable Electrostatic Air Filter

### Technical Specifications:

Specifications subject to change without notice

Cooling Capacity:	18,000 BTUH
Voltage:	115V, 60Hz, 1PH
Amps:	11.3
Total Watts:	1300
Cooling Ambient:	Operating Range 65° to 105°
Outdoor Use:	No
Cooling Capacity:	Total BTUH at 80°DB/67°WB return air with 85°EWT and 105°LWT.
In Rush Amps:	69
Plug Type:	5.15P, LCDI
EER:	13.8

**NOTE:** Dedicated circuit and time delay fuses / circuit breakers are recommended.

Compressor:	Rotary
Compressor HP:	1-1/2
Compressor LRA:	63

EVAP CFM - High:	600
EVAP Motor HP:	1/8

Water Line Connections	
Water In:	3/8 QC
Water Out:	3/8 QC
Drain:	1/4 QC

Condensate Removal:	Pump Automatic 20' Vertical Lift
---------------------	-------------------------------------

Refrigerant Charge:	18 oz R-410A
---------------------	--------------

Height:	45.7"
Width:	21.5"
Depth:	16.0"
Net Weight:	155 lbs.

### Estimated Condenser Water Usage\*

Entering Water Temp:	
Condensing Water at 60°:	1.1 GPM
Condensing Water at 85°:	4.5 GPM

\* Condenser Water Usage is base on 80/67 Ambient, and incoming water temperatures as shown. Usages will vary with water conditions and ambient temperatures.

847.583.0311  
oceanaire-inc.com

PROUDLY MADE IN THE  
**USA**



PROVIDING A BETTER CLIMATE ANYWHERE.

## Optional Accessories



### Quick-Connect Hose Kit / 40 Foot

Part Number: HK-5QC

Designed for use with OceanAire portable water-cooled air conditioners equipped with quick-connect fittings.

### Hose kit consists of three hoses:

Water-In Hose, Water-Out Hose and Drain Hose.

The Water-In ( 3/8" QC BLACK ) and Water-Out ( 3/8" QC RED ) hoses are made of reinforced PVC tubing.

The Drain ( 1/4" QC YELLOW ) hose is made of gray reinforced PVC and is used to route the condensate pump discharge to a drain.



### Hose Adapter

Part Number: HA-SMQC

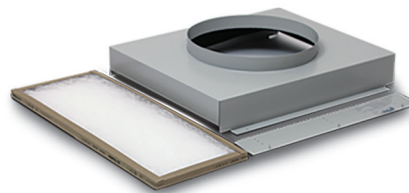
Quick connect transition to garden hose connection



### Discharge Duct Adapter

For extended duct length

Part Number: 2DDA-10



### Evaporator Return Air Plenum

For ducting return air

Part Number: 2DEP-12



### Nozzle Kit / 2 x 6"

For directional cooling

Part Number: 2NK-2



PROVIDING A BETTER CLIMATE ANYWHERE.

**OceanAire, Inc.**  
1731 Wall Street, Suite 100  
Mount Prospect, Illinois 60056

OA-TS-OWC1811QC-01.03.22

847.583.0311  
oceanair-inc.com

PROUDLY MADE IN THE  
**USA**