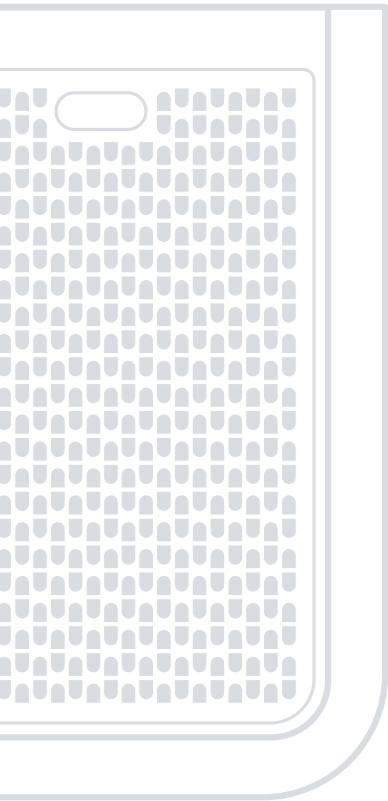


MOVINCOOL®

The #1 Spot Cooling Solution

MovinCool Specification & Accessory Catalog

Effective January 2025



Another line of quality products by DENSO.

DENSO



Industry-Leading Quality and Innovation Since 1982

MovinCool is your number one source for portable cooling systems. You'll find the industry's finest and most extensive line of products, known for innovation, reliability, and overall value. MovinCool pioneered the portable cooling industry in 1982. We continue to lead by providing the most advanced products on the market. For offices, factories, warehouses and any commercial space — MovinCool brings proven performance for trouble-free spot cooling.

The Performance Difference

Innovation. Our advances in portable cooling technology include the first programmable systems and the first ceiling-mount units for space-limited installations. Now MovinCool brings you the first and only connectivity-ready portable cooling systems.

Reliability. DENSO design standards ensure that MovinCool systems live up to your expectations for durable reliability. Every model undergoes rigorous tests in the design phase including three-axis vibration, thermal shock under extreme temperature cycling, and exposure to eight different kinds of dust particulates.

Value. MovinCool products provide the best total cost of ownership, typical life cycles exceeding 10 years, and manufacturing quality approximating zero defects.

Our commitments to quality, innovation and service combine to give you the best return on investment — the reason MovinCool is known worldwide as the #1 portable spot cooling solution.

Another quality product from DENSO

As a brand of DENSO Corporation, MovinCool is aligned with the world's largest manufacturer of air conditioning systems and the primary supplier to the automotive industry. DENSO has more than 200 subsidiaries and affiliates worldwide and employs over 170,000 people. In addition to the manufacturing of MovinCool portable a/c units, DENSO is also a global leader in automotive, data capture, robotics, and IT cooling solutions and is the proud inventor of the QR Code.



Automotive



Data Capture



Portable A/C



Robotics



IT Cooling

Table of Contents

Why MovinCool.....	2
Climate Pro Overview	4
MovinCool Connect Overview	5
Applications.....	6
How to Select a Model & Accessories	8
Choose by Voltage, Cooling or Heating Capacity	
How to Choose Accessories	
Warranty	
Climate Pro K Series	
Features Overview	9
Specifications.....	10
K12e / K18e / K24e Accessories.....	12
K12e / K18e / K24e Accessory Applications.....	13
K36e / K60e / K63e Accessories.....	14
K36e / K60e / K63e Accessory Applications.....	15
Climate Pro X Series	
Features Overview	16
Specifications.....	17
X14e / X20e / X26e Accessories	18
X14e / X20e / X26e Accessory Applications	19
Climate Pro D Series	
Features Overview	20
Specifications.....	21
D12e / D18e Accessories	22
D12e / D18e Accessory Applications	23

The All-New Climate Pro Series Advances Spot-cooling Technology.

The best just got better with three all-new product series:

Climate Pro K – for offices and computer rooms

Climate Pro X – for industrial and warehouse applications

Climate Pro D – dual capabilities for heating and cooling

Improved performance with these new features:

- Color LCD control panel. Simplifies operation, clearing of codes and easier to read.
- Matte black cabinet brings stylish utility to the workplace.
- Added bumpers enable safer handling and movement around your facility.
- Larger casters makes rolling and navigation easier.
- Built-in cable compartment. Keeps power cord securely out of the way.

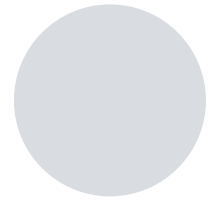
Other design advances:

- Quick-connect nozzle. Turn-and-click convenience for efficient direction of air-flow (select Climate Pro X series models).
- Hinged tank cover. Keeps drain tank secure.
- Ergonomic drain tank design. Makes for easier handling and emptying.
- Built-in flanges. Standard on all models — no add-ons needed.

Connectivity ready* with remote monitoring features:

- 24/7 monitoring for “no surprises.”
- Receive system notifications.
- Get on-demand location updates for asset tracking.

**Subscription required, see your local dealer for details.*



Climate Pro K Series

Made especially for commercial/office spaces where comfort is essential to productivity.



Climate Pro X Series

Spot cooling for commercial/office applications — perfect for cooling people and production processes.



Climate Pro D Series

Our heat pumps are your answer for cooling and heating for year-round comfort.



In the Office



In the Field

MovinCool Connect

The #1 spot cooling solution just got better at keeping you cool and connected!

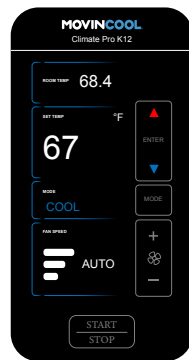
With the MovinCool Climate Pro series, you now can access game-changing connectivity that keeps you in the know with one easy-to-use online portal¹.



U.S. and Canada

Track units anywhere in North America

- See real-time performance²
- Locate deployed or missing units
- Available on all Climate Pro models³



Remote Monitoring

See status of individual units

- Operating temperature
- Fan speeds
- Cooling/heating modes
- Ambient room temperature



Online Portal

Manage alerts and notifications

- Easy-to-use interface
- Customize notifications
- View error codes
- Receive email and text alerts



Leverage the power of connectivity!

MovinCool Connect takes peace of mind to a whole new level. Real-time remote monitoring brings critical operating data right to your fingertips, even when you're miles away. Track the performance of your machine over time and remotely view the control panel. Receive email or text alerts when MovinCool unit location changes, crucial error codes occur such as full drain tank and if room temperature goes outside desired range.

Whether you're using MovinCool in commercial or industrial spaces, rely on the power of MovinCool's connectivity to keep you and your business cool and comfortable all year round.

¹ Requires annual subscription. ² Based on average cellular signal strength of powered units cycling on 15min intervals and location proximity within an average of 100 ft. ³ Units purchased on or after May 1, 2022 require optional communications module to be installed separately.

Applications

MovinCool pioneered the portable cooling industry in 1982. We continue to lead by providing you with the most advanced products on the market. For offices, schools, factories, warehouses and any commercial space — MovinCool brings proven performance for trouble-free spot cooling.



Computer and Server Room

Protect valuable electronics with MovinCool reliability.

The MovinCool Climate Pro series provides dependable spot cooling for your high-value electronics — computers, servers, and telecom equipment while preventing equipment failures and communication outages. It can be used for your emergency backup, supplement, or permanent cooling.



Offices and Schools

We keep people cool and productive.

MovinCool is instant relief from excessive heat in offices and schools to keep people thinking clearly and working productively. It helps keep computers from overheating, provides cooling just where it's needed and emergency cooling when central systems fail.



Healthcare Facilities

Our spot cooling solutions keep operations running smoothly.

MovinCool controls temperatures around heat-generating medical equipment to keep your healthcare facility running smoothly when main HVAC systems are down. Use it for temporary cooling in emergency rooms, waiting areas and energy-intensive areas, such as labs, imaging centers, and computer rooms.



Industry and Manufacturing

When heat is rough on production, MovinCool keeps things cool and running smoothly.

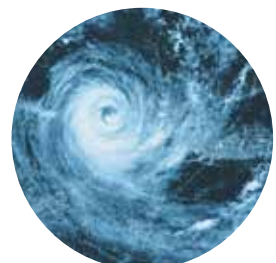
MovinCool portable spot air conditioners can be used without the huge expense of air conditioning an entire facility and prevent product defects (warping and condensation) due to heat and humidity. It reduces risks of human error and worker disability from heat exhaustion while supporting the work quality and productivity.



Emergency Back-up

Back-up cooling when you need it the most.

MovinCool units provide true air-conditioning on casters that can be quickly deployed in a variety of emergency situations such as, heat waves, flooding, and natural disasters. Reduce heat stress on equipment and people to keep critical operations up and running and can run from a generator during a power outage.





Outdoors and Events

No need to cancel your plans. Simply go with MovinCool.

MovinCool units can simply be rolled out, set up, and turned on providing cold air to protect staff and participants from heat stress. The Climate Pro X Series models offer 13,200 to 24,000 Btu/h of spot cooling and the Classic Series models offer 39,000 to 60,000 Btu/h and are ETL listed for outdoor use and more extreme conditions like strong sunlight and high humidity.



Moisture Removal

Count on MovinCool dehumidification technology for ideal moisture removal.

MovinCool portable spot air conditioners are ideal for drying out wet and damp spaces in emergency situations such as storms, floods, spills and leaks. It extracts moisture quickly, saving time and reducing restoration costs. It eliminates odors and prevents growth or spread of mold and mildew.



Automotive Service Bay

When the garage gets unbearably hot, MovinCool says, "No sweat!" We help your team work comfortably.

MovinCool portable spot air conditioners help those in automotive service bays or on the race track avoid heat stress and increase productivity. It cools employees in hot and humid service bays while reducing fatigue, injury and heat stress. It also cools hot engines and other equipment — cutting downtime.



Construction Sites

Deliver quick drying and cooling solutions at the jobsite.

MovinCool portable spot air conditioners speed up drying and curing of construction materials such as drywall, compound, grout, caulking, paints, and adhesives. It keeps workers cool in heat-intensive work processes, such as welding or while in trailers, tents, temporary offices or when central HVAC is down or off.



Safety in the Workplace

Preventing heat and stress in productivity by keeping workers cool.

When jobsite heat becomes unbearable, MovinCool spot air conditioners provides quick relief to workers avoiding heat stress, potential OSHA citations, and increasing productivity. It cools down heat-sensitive equipment preventing production downtime and is ideal for supplemental, emergency or permanent cooling.



How to Select a Model & Accessories

Quick Reference

MovinCool systems come in different electrical configurations — so you have spot-cooling choices that work for your facility.

By Voltage

1 Phase 115V	1 Phase 208/230V	3 Phase 460V
Climate Pro D12e	Climate Pro K24e	Climate Pro K63e
Climate Pro D18e	Climate Pro K36e	
Climate Pro K12e	Climate Pro K60e	
Climate Pro K18e	Climate Pro X26e	
Climate Pro X14e		
Climate Pro X20e		

By Cooling Capacity

Btu/h Cooling	Model
11,450	Climate Pro D12e
13,200	Climate Pro K12e
13,200	Climate Pro X14e
16,300	Climate Pro D18e
16,800	Climate Pro K18e
16,800	Climate Pro X20e
24,000*	Climate Pro K24e
24,000*	Climate Pro X26e
36,000*	Climate Pro K36e
60,000*	Climate Pro K60e
60,000	Climate Pro K63e

*Specifications information shown with 230 V.

By Heating Capacity

Btu/h Cooling	Model
9,900	Climate Pro D12e
13,100	Climate Pro D18e

Technical Features

All models feature compressor overload relay and fan motor protection. All models also feature compressor short-cycle protection, return air thermostat, automatic restart and accommodate a condensate pump kit.



Spot Cooling Solutions with MovinCool Accessories

The all-in-one design of MovinCool portable air conditioners and heat pumps make them the ideal cooling and heating solution for your climate-control needs. Using the optional accessories not only gives you the ability to customize cooling and heating applications, but also makes the unit work more efficiently.

We've grouped the accessories into the most common applications such as cooling multiple areas with one unit, automatically removing condensation and removing exhaust air. The possibilities are endless. And with genuine MovinCool accessories, you are assured of quality parts engineered and designed specifically to gain optimum performance from your MovinCool products.

How to Select MovinCool Accessories

The most common accessory installations are included in this catalog.

1. Find your MovinCool model series: Climate Pro or CM.
2. Find the application(s) suited to your specific need.
3. Order the part number(s) for your specific MovinCool model.

Standard and Extended Warranty

All models come with a standard warranty covering the entire unit and compressor for 12 months.

Free Extended Warranty

Visit MovinCool.com/warranty for details on MovinCool's industry-best free Extended Warranty Program which totals three (3) years for both parts and labor on portable units.

Climate Pro K Series

The cooler choice for your office or computer room

The all-new Climate Pro K series brings “roll-it-in” and “plug-it-in” convenience with the innovative features that distinguish the entire Climate Pro line.

Key Features

- Made especially for commercial spaces where comfort is essential to productivity.
- Cools to mid-60s°F — for effective heat control around electronics, servers, and computers.
- Air-cooled models from 12,000 to 60,000 Btu/h — let you size efficiently for your space.
- Digital controls and auto operation — allow 24/7 programmable back-up of central systems.
- Effective moisture removal — hastens drying for humid and water-damaged areas.
- Connectivity ready with remote monitoring, geolocation and performance notifications.*

**Subscription required, see your local dealer for details.*



Ideal for . . .

Offices
Server and Telecom Rooms
Hospitals
Schools
Laboratories
Banks
Emergency Back-up
Supplemental Cooling
After-hours Cooling
Retail Spaces



Climate Pro K Series Specifications

		K12e	K18e	K24e
Electronic Features	Control Panel	Programmable	Programmable	Programmable
Cooling Capacity	Rating Conditions: 95°F @ 60% RH	13,200 Btu/h	16,800 Btu/h	24,000 Btu/h*
Energy Efficiency Rating (EER)		11.0	9.9	9.2*
Electrical Characteristics	Voltage Requirement (60 Hz)	1 Phase, 115 V	1 Phase, 115 V	1 Phase, 208/230 V
	Total Power Consumption	1.2 kW	1.7 kW	2.6 kW*
	Current Consumption	10.8 amps	14.9 amps	11.4 amps*
	Recommended Fuse Size	15 amps	20 amps	20 amps
	NEMA Plug Configuration	5-15P	5-20P	6-20P
	Min. - Max. Voltage	104 - 127 V	104 - 127 V	198 - 253 V
Fans	Motor Output	0.23 kW	0.23 kW	0.56 kW*
Evaporator	Fan Type	Centrifugal	Centrifugal	Centrifugal
	Max. Air Flow - High/Mid/Low	410 / 380 / 340 CFM	540 / 500 / 440 CFM	660 / 600 / 530 CFM*
	Max. External Static Pressure	0.31 IWG	0.31 IWG	0.51 IWG
Condenser	Fan Type	Centrifugal	Centrifugal	Centrifugal
	Max. Air Flow - High/Mid/Low	830 / 780 / 680 CFM	810 / 760 / 690 CFM	950 / 850 / 740 CFM*
	Max. External Static Pressure	0.16 IWG	0.23 IWG	0.16 IWG
Compressor	Type	Hermetic Rotary	Hermetic Rotary	Hermetic Rotary
	Output	0.75 kW	0.9 kW	1.5 kW*
Refrigerant	Type	R-32	R-32	R-32
	Amount	450 g	600 g	960 g
Dimensions	W x D x H	22 x 27 x 47 in	22 x 27 x 47 in	22 x 27 x 51 in
Net Weight/Shipping Weight		170 / 205 lb	172 / 207 lb	197 / 237 lb
Power Cord	Gauge	14 AWG (3-core)	12 AWG (3-core)	12 AWG (3-core)
	Length	10 ft	10 ft	6 ft
Condensate Tank Capacity		5 gal	5 gal	5 gal
Operating Conditions	Min. - Max. @ 50% RH	65° - 95°F	65° - 95°F	65° - 95°F
Max. Duct Length	Per Cold Duct Hose	30 ft	25 ft	50 ft
	Hot Duct Hose	60 ft	60 ft	45 ft
Max. Sound Level	With Condenser Duct - High/Mid/Low	59 / 57 / 53 dB(A)	63 / 61 / 59 dB(A)	66 / 64 / 61 dB(A)Ⓞ
	Without Condenser Duct - High	62 dB(A)	66 dB(A)	69 dB(A)*

*Specifications information shown with 230 V.

All specifications subject to change without notice. See page 8 for technical features and warranty information.

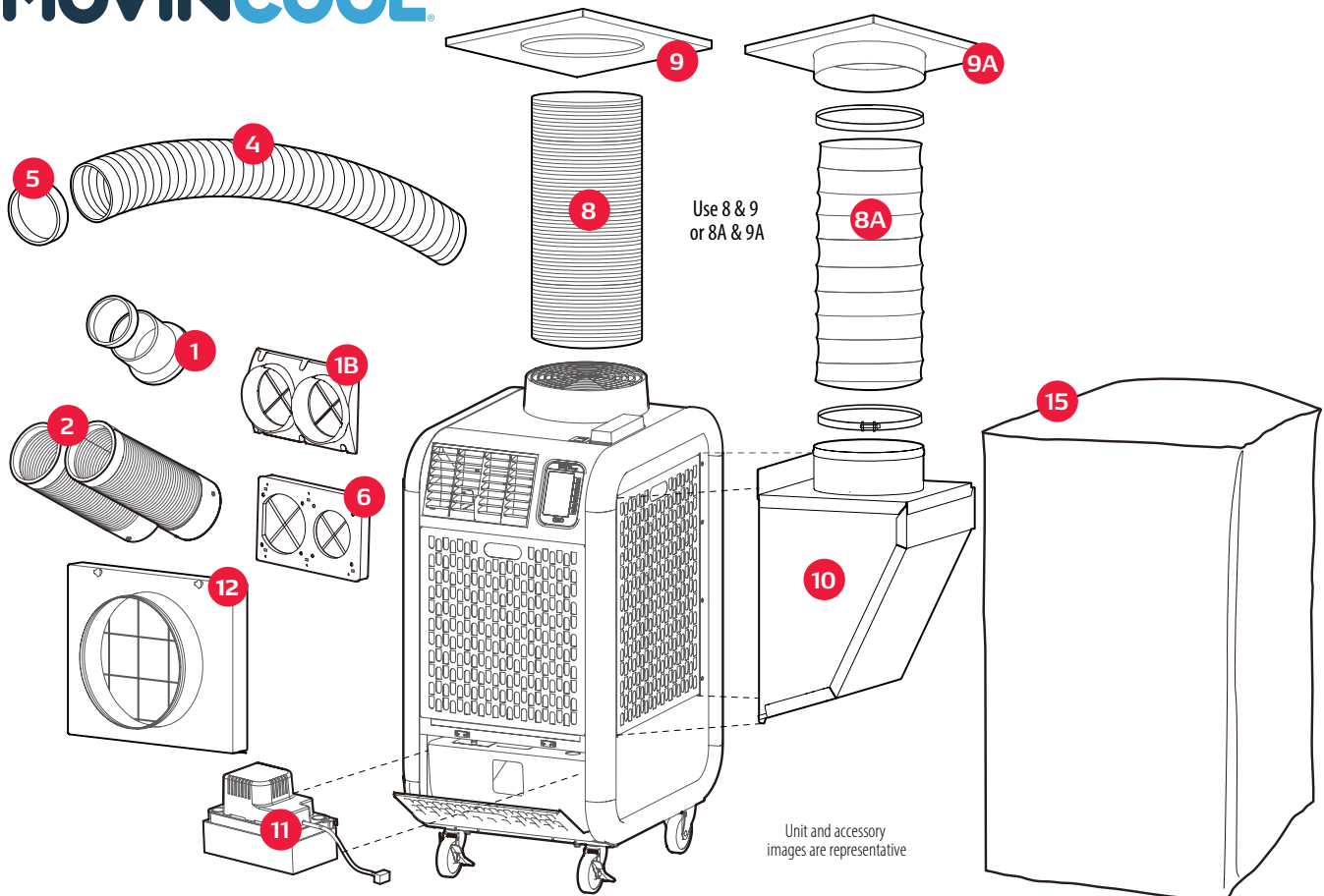


Climate Pro K Series Specifications

		K36e	K60e	K63e
Electronic Features	Control Panel	Programmable	Programmable	Programmable
Cooling Capacity	Rating Conditions: 95°F @ 60% RH	36,000 Btu/h*	60,000 Btu/h*	60,000 Btu/h
Energy Efficiency Rating (EER)		8.8*	9.1*	9.1
Electrical Characteristics	Voltage Requirement (60 Hz)	1 Phase, 208/230 V	1 Phase, 208/230 V	3 Phase, 460 V
	Total Power Consumption	4.1 kW*	6.6 kW*	6.6 kW
	Current Consumption	18.4 amps*	30.4 amps*	9.5 amps
	Recommended Fuse Size	30 amps	50 amps	20 amps
	NEMA Plug Configuration	6-30P	6-50P	L16 - 20
	Min. - Max. Voltage	198 - 253 V	198 - 253 V	440 - 480 V
Fans	Motor Output	0.23 kW Evaporator	0.56 kW Evaporator	0.56 kW Evaporator
		0.37 kW Condenser	0.30 kW x 2 Condensers	0.30 kW x 2 Condensers
Evaporator	Fan Type	Centrifugal	Centrifugal	Centrifugal
	Max. Air Flow - High/Mid/Low	920 / 880 / 840 CFM	1770 / 1710 / 1650 CFM	1770 / 1710 / 1651 CFM
	Max. External Static Pressure	0.6 IWG	0.9 IWG	0.9 IWG
Condenser	Fan Type	Centrifugal	Centrifugal	Centrifugal
	Max. Air Flow - High/Low	1390 / 990 CFM	2400 CFM	2400 CFM
	Max. External Static Pressure	0.5 IWG	0.85 IWG	0.85 IWG
Compressor	Type	Hermetic Scroll	Hermetic Rotary	Hermetic Scroll
	Output	2.3 kW	3.45 kW	3.45 kW
Refrigerant	Type	R-32	R-32	R-32
	Amount	1080 g	1460 g	1460 g
Dimensions	W x D x H	31 x 55 x 53 in	31 x 55 x 64 in	31 x 55 x 64 in
Net Weight/Shipping Weight		452 / 529 lb	574 / 666 lb	635 / 729 lb
Power Cord	Gauge	12 AWG (3-core)	6 AWG (3-core)	12 AWG (3-core)
	Length	6 ft	6 ft	6 ft
Condensate Tank Capacity		2 @ 5 gal	Auto Pump Included	Auto Pump Included
Operating Conditions	Min. - Max. @ 50% RH	65° - 95°F	65° - 105°F	65° - 105°F
Max. Duct Length	Per Cold Duct Hose	40 ft	40 ft	40 ft
	Hot Duct Hose	60 ft	100 ft	100 ft
Max. Sound Level	With Condenser Duct - High/Mid/Low	68 / 67 / 66 dB(A)	69 / 68 / 67 dB(A)	69 / 68 / 67 dB(A)
	Without Condenser Duct - High/Mid/Low	70 / 69 / 68 dB(A)	71 / 70 / 69 dB(A)	71 / 70 / 69 dB(A)

*Specifications information shown with 230 V.

All specifications subject to change without notice. See our website for the latest information. See page 8 for technical features and warranty information.



Above diagrams are only representative.

Climate Pro K12e / K18e / K24e

#	ACCESSORY	DESCRIPTION
1	Supply Air Flange Kit, 5-in dia.	Black metal flange with wire clamp and mounting screws. Use with self-supported ducts.
1B	Quick Connect Supply Air Flange Kit, 5-in dia.	Black plastic flange with mounting screws. Use with Quick Connect Nozzle Kit.
2	Quick Connect Supply Air Nozzle Kit, 5-in dia.	Gray plastic nozzle that extends up to 2 feet in length. Includes trim ring. Each nozzle sold separately.
4	Self-Supported Duct, 5-in dia.	Gray plastic duct with adjustable diameter that extends from 6.5 to 10 feet in length.
5	Trim Ring, 5-in dia.	Black plastic ring mounts as end caps for extension duct.
6	Supply Air Nozzle Adapter Kit, 5-in dia.	Adapter converts airflow from louvers to nozzles or air ducts. Two nozzles or extension ducts.
8	Self-Supported Duct, 12-in dia.	Gray plastic duct that extends 6.5 to 10 feet in length.
8A	Flexible Air Duct, 12-in dia. (not shown)	Wire-reinforced, accordion-style duct in 10-ft lengths. Includes clamp.
9	Celling Tile, 12-in dia hole, plastic	24-in x 24-in white plastic tile with 12-in hole for exhaust air self-supported duct.
9A	Celling Tile, 12-in hole, metal	24-in x 24-in sheet metal tile with 12-in hole and built-in flange for exhaust air flexible duct. Includes clamp.
10	Outdoor Heat Exchanger Plenum	Plenum for return air to outdoor heat exchanger.
11	Condensate Pump Kit	Pump kit includes 3/8-in diameter x 20-ft length hose. Includes installation hardware. Maximum lift: 20 feet at 115V and 17 feet at 230V.
12	Indoor Heat Exchanger Plenum	Plenum for return air to indoor heat exchanger.
15	Storage Cover	Durable black nylon oxford unit storage cover.

Accessory Applications

Auto Condensate Removal

Why bother with emptying the drain tank when you can install a condensate pump to remove the water automatically? This pump has a 17-ft lift capacity to reach virtually any remote drain.

#	Accessory	Climate Pro K12e / K18e	CLIMATE Pro K24e
11	Condensate Pump Kit	484789-0320	484789-0310

Outdoor Heat Exchanger Exhaust Air Removal

MovinCool makes removing exhaust easy. Replace the existing ceiling tile with the MovinCool ceiling tile accessory. Place the self-supported or flexible duct on top of the unit and insert it into the ceiling tile.

#	ACCESSORY	CLIMATE PRO K12e / K18e / K24e
8	Self-Supported Duct, 12-in dia. ^(a)	LA481744-0410
8A	Flexible Air Duct (not shown) ^(b)	LAY45771-0060
9	Ceiling Tile, plastic ^(c)	LA146373-8280
9A	Ceiling Tile, metal (not shown) ^(d)	484490-1030

Outdoor Heat Exchanger Air Intake

When balanced airflow is required, attach the outdoor heat exchanger plenum with a duct from the side of the unit to an outside air source. The air to the outdoor heat exchanger is pulled from outside the room to eliminate problems associated with negative air pressure.

#	ACCESSORY	Climate Pro K12e / K18e	Climate Pro K24e
8	Self-Supported Duct, 12-in dia. ^(e)	LA481744-0410	LA481744-0410
8A	Flexible Air Duct (not shown) ^(f)	LAY45771-0060	LAY45771-0060
9	Ceiling Tile, plastic ^(g)	LA146373-8280	LA146373-8280
9A	Ceiling Tile, metal (not shown) ^(h)	484490-1030	484490-1030
10	Outdoor Heat Exchanger Plenum ⁽ⁱ⁾	484350-1430	484350-1170

Spot or Remote Cooling

To use the Climate Pro® K Series models to spot cool specific areas, use the nozzle adapter in place of the standard louvers. Attach self-supported or flexible air ducts to the adapter to cool remote hot spots. Trim rings give a finished look and keep the ducts from unraveling. To improve efficiency, use the outdoor heat exchanger plenum to recirculate cool air.

#	ACCESSORY	CLIMATE PRO K12e / K18e	CLIMATE PRO K24e
1	Supply Air Flange Kit ^(j)	481170-0450	481170-0450
1B	Quick Connect Supply Air Flange Kit ^(k)	481170-0480	481170-0480
2	Quick Connect Supply Air Nozzle Kit ^(l)	484209-0480	484209-0480
4	Self-Supported Duct, 5-in dia. ^(m)	LA481744-0420	LA481744-0420
5	Trim Ring ⁽ⁿ⁾	481851-0200	481851-0200
6	Supply Air Nozzle Adapter Kit ^(o)	481769-0280	481769-0280
12	Indoor Heat Exchanger Plenum ^(p)	484350-1190	484350-1200

Unit Storage

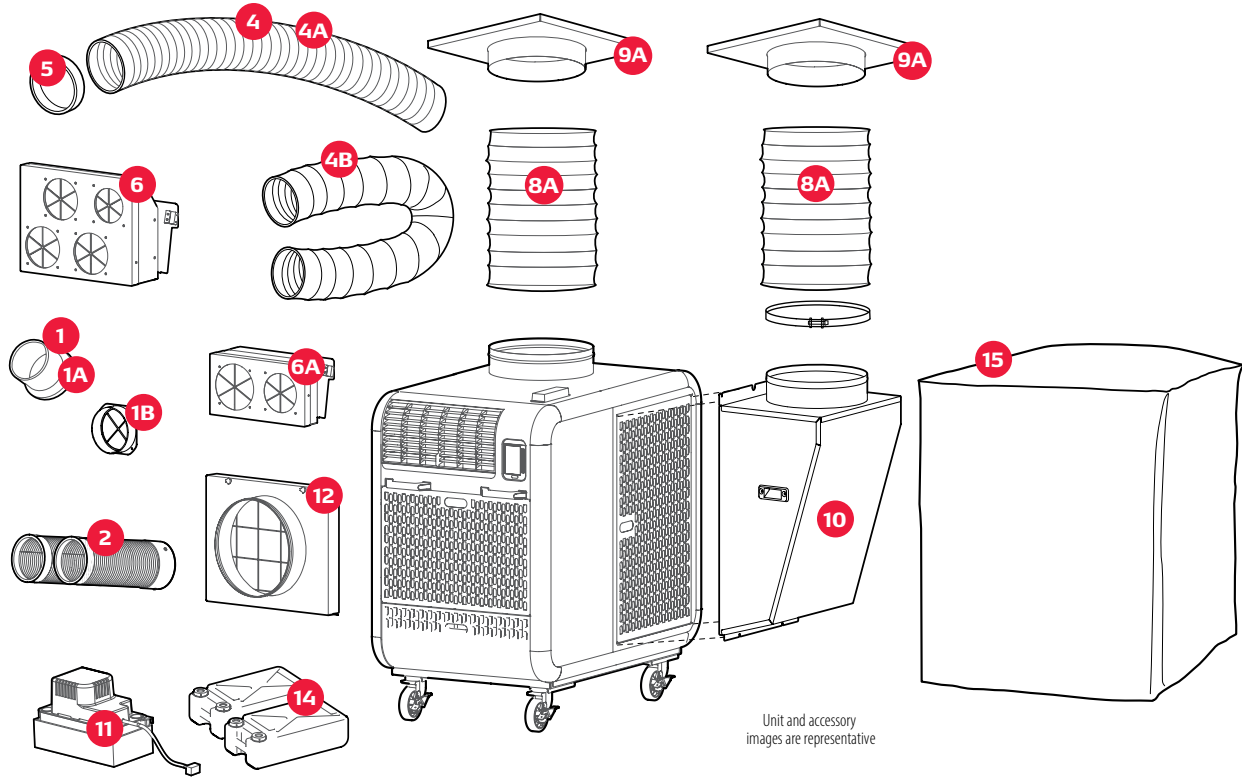
This durable unit cover is perfect for storage and transportation on an open truck. Made of black nylon oxford fabric, this cover is waterproof and mildew- and UV-treated for lasting service.

#	ACCESSORY	CLIMATE PRO K12e / K18e	CLIMATE PRO K24e
15	Storage Cover	LA484420-0840	LAY84420-0690

REQUIRED ACCESSORIES:

- | | | | | |
|--------|---------------|------------------|----------------|-------------------|
| (a) 9 | (e) 9 and 10 | (i) (8 and 9) or | (l) 1B and 6 | (o) (1B and 2) or |
| (b) 9A | (f) 9A and 10 | (8A and 9A) | (m) 1, 5 and 6 | (1, 4 and 5) |
| (c) 8 | (g) 8 and 10 | (j) 4, 5 and 6 | (n) 4 | (p) 8 or 8A |
| (d) 8A | (h) 8A and 10 | (k) 2 and 6 | | |

NOTE: All part numbers come with one part except where noted. All kits include additional pieces such as clamps and screws. See parts description box for more information.



Climate Pro K36e / K60e / K63e

#	ACCESSORY	DESCRIPTION
1	Supply Air Flange Kit, 6-in dia.	Black metal flange with wire clamp and mounting screws. Use with Self-Supported Duct.
1A	Supply Air Flange Kit, 8-in dia	Black metal flange with wire clamp and mounting screws. Use with Self-Supported or Flexible air ducts.
1B	Quick Connect Supply Air Flange Kit, 6-in dia.	Black metal flange with mounting screws. Use with Quick Connect Nozzle Kit.
2	Quick Connect Supply Air Nozzle Kit, 6-in dia.	Gray plastic nozzle that extends up to 2 feet in length. Includes trim ring. Each nozzle sold separately.
4	Self-Supported Duct, 6-in dia.	Gray plastic duct with adjustable diameter that extends from 6.5 to 10 feet in length.
4A	Self-Supported Duct, 8-in dia.	Gray plastic duct with adjustable diameter that extends from 6.5 to 10 feet in length.
4B	Flexible Air Duct, 8-in dia.	Wire-reinforced, accordion-style duct in 25-ft lengths. Includes clamp.
5	Trim Ring, 6-in dia.	Black plastic ring mounts as end caps for extension duct.
6	Supply Air Nozzle Adapter Kit, 6-in dia.	Adapter converts airflow from louvers to nozzles or air ducts. Two, three or four nozzles or air ducts configurations.
6A	Duct Adapter Kit, 8-in dia.	Two-piece black metal frame converts airflow from louvers to 8-in self-supported ducts or flexible air ducts. Ducts and flange sold separately.
8A	Flexible Air Duct, 16-in dia. (not shown)	Wire-reinforced, accordion-style duct in 25-ft lengths. Includes clamp.
9A	Ceiling Tile, 16-in hole, metal	24-in x 24-in sheet metal tile with 16-in hole and built-in flange for exhaust air flexible duct kit. Includes clamp.
10	Outdoor Heat Exchanger Plenum	Plenum for return air to outdoor heat exchanger.
11	Condensate Pump Kit, 230V	Pump kit includes 3/8-in diameter x 20-ft length hose. Includes installation hardware. Maximum lift: 17 feet
12	Indoor Heat Exchanger Plenum	Plenum for return air to indoor heat exchanger.
14	Condensate Tank	Drain tank storage for condensation. Requires condensate float, sold separately. (For Climate Pro K60e/K63e only)
14A	Condensate Float (not shown)	Controls water level in condensate tanks. (For Climate Pro K60e/K63e only)
15	Storage Cover	Durable black nylon oxford unit storage cover.

Accessory Applications

Auto Condensate Removal

Why bother with emptying the drain tank when you can install a condensate pump to remove the water automatically? This pump has a 17-ft lift capacity to reach virtually any remote drain. (Use of condensate tanks also requires the float).

#	ACCESSORY	CLIMATE PRO K36e	CLIMATE PRO K60e / K63e
11	Condensate Pump Kit	484789-0310	Included
14	Condensate Tank	Included	484730-0020
14A	Condensate Float (not shown)	Included	484460-0010

Outdoor Heat Exchanger Exhaust Air Removal

MovinCool makes removing exhaust easy. Replace the existing ceiling tile with the MovinCool ceiling tile accessory. Place the self-supported or flexible duct on top of the unit and insert it into the ceiling tile (8A and 9A required).

#	ACCESSORY	CLIMATE PRO K36e / K60e / K63e
8A	Flexible Air Duct (not shown)	LAY45820-0010
9A	Ceiling Tile, metal (not shown)	484490-1040

Outdoor Heat Exchanger Air Intake

When balanced airflow is required, attach the outdoor heat exchanger plenum with a duct from the side of the unit to an outside air source. The air to the outdoor heat exchanger is pulled from outside the room to eliminate problems associated with negative air pressure. (8A, 9A and 10 required).

#	ACCESSORY	CLIMATE PRO K36e	CLIMATE PRO K60e / K63e
8A	Flexible Air Duct, 16-in dia. (not shown)	LAY45820-0010	LAY45820-0010
9A	Ceiling Tile, metal (not shown)	484490-1040	484490-1040
10	Outdoor Heat Exchanger Plenum	484350-1460	484350-1470

Spot or Remote Cooling

To use the Climate Pro K Series models to spot cool specific areas, use the nozzle adapter in place of the standard louvers. Attach self-supported or flexible air ducts to the adapter to cool remote hot spots. Trim rings give a finished look and keep the ducts from unraveling. To improve efficiency, use the outdoor heat exchanger plenum to recirculate cool air.

#	ACCESSORY	CLIMATE PRO K36e	CLIMATE PRO K60e / K63e
1	Supply Air Flange Kit, 6-in dia. ^(a)	481170-0460	481170-0460
1A	Supply Air Flange Kit, 8-in dia. ^(b)	481170-0470	481170-0470
1B	Quick Connect Supply Air Flange Kit, 6-in dia. ^(c)	481170-0490	481170-0490
2	Quick Connect Supply Air Nozzle Kit, 6-in dia. ^(d)	484209-0490	484209-0490
4	Self-Supported Duct, 6-in dia. ^(e)	LA481744-0400	LA481744-0400
4A	Self-Supported Duct, 8-in dia. ^(f)	LA481744-0430	LA481744-0430
4B	Flexible Air Duct, 8-in dia. ^(f)	LAY45810-0030	LAY45810-0030
5	Trim Ring ^(g)	481851-0210	481851-0210
6	Supply Air Nozzle Adapter Kit, 6-in ^(h)	481769-0290	481769-0290
6A	Duct Adapter Kit, 8-in dia. ⁽ⁱ⁾	481769-0300	481769-0300
8A	Flexible Air Duct (not shown) ^(j)	LAY45820-0010	LAY45820-0010
12	Indoor Heat Exchanger Plenum ^(k)	484350-1330	484350-1210

Unit Storage

This durable unit cover is perfect for storage and transportation on an open truck. Made of black nylon oxford fabric, this cover is waterproof and mildew- and UV-treated for lasting service.

#	ACCESSORY	CLIMATE PRO K36e	CLIMATE PRO K60e / K63e
15	Storage Cover	LA484420-0850	LA484420-0860

REQUIRED ACCESSORIES:

- | | | | | |
|---|---------------------------|--------------------------|---|-------------------|
| ^(a) 4, 5 and 6 | ^(c) 2 and 6 | ^(f) 1A and 6A | ^(h) (1B and 2) or (1, 4 and 5) | ^(j) 12 |
| ^(b) (4A and 6A) or (4B and 6A) | ^(d) 1B and 6 | ^(g) 4 | ⁽ⁱ⁾ (1A and 4A) or (1A and 4B) | ^(k) 8A |
| | ^(e) 1, 5 and 6 | | | |

NOTE: All part numbers come with one part except where noted. All kits include additional pieces such as clamps and screws. See parts description box for more information.



Climate Pro X Series

The cooler choice for your warehouse or factory.

The all-new Climate Pro X Series brings advanced spot-cooling to commercial and industrial applications — perfect for cooling people and production processes.

Key Features

- Air-cooled units from 13,200 to 24,000 Btu/h — to handle temperatures as high as 113°F
- Three-speed fan and adjustable nozzles for versatile cooling comfort
- New! 115 V/20 amp model (16,800 Btu/h)
- Digital controls and auto operation — for 24/7 programmable back-up of central systems.
- Effective moisture removal — hastens drying for humid and water-damaged areas.
- Connectivity ready with remote monitoring, geolocation and performance notifications.*

**Subscription required, see your local dealer for details.*



Ideal for . . .

Warehouses
Assembly Lines
Manufacturing Plants
Process Cooling
Construction Sites
Moisture Removal
Outdoors and Events

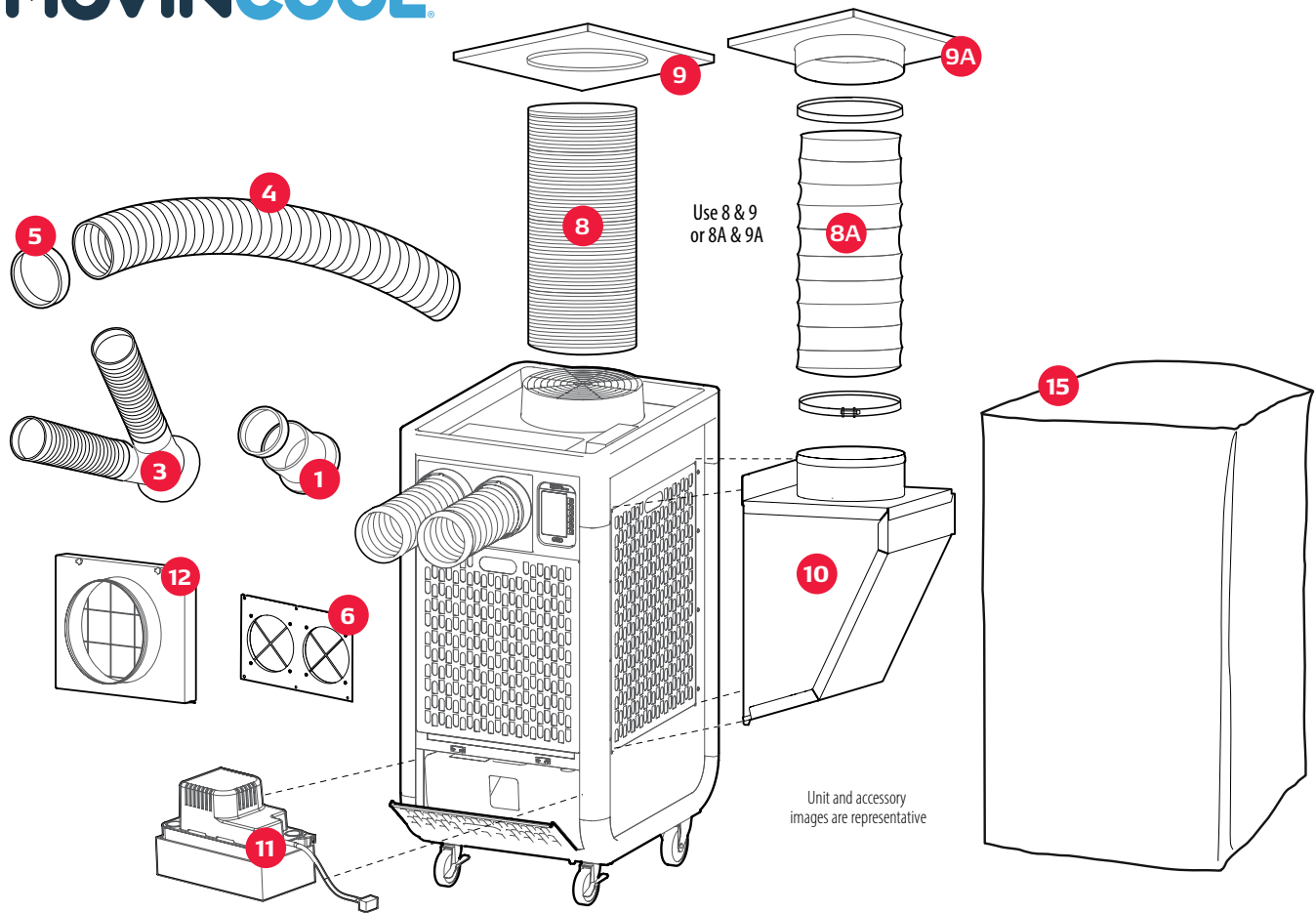


Climate Pro X Series Specifications

		X14e	X20e	X26e
Electronic Features	Control Panel	Programmable	Programmable	Programmable
Cooling Capacity	Rating Conditions: 95°F @ 60% RH	13,200 Btu/h	16,800 Btu/h	24,000 Btu/h*
Energy Efficiency Ratio (EER)		11.0	10.5	10.0
Electrical Characteristics	Voltage Requirement (60 Hz)	1 Phase, 115 V	1 Phase, 115 V	1 Phase, 208/230 V
	Total Power Consumption	1.2 kW	1.6 kW	2.3 kW*
	Current Consumption	11 amps	14.5 amps	10.6 amps*
	Recommended Fuse Size	15 amps	20 amps	20 amps
	NEMA Plug Configuration	5-15P	5-20P	6-20P
	Min. Max. Voltage	104 – 127 V	104 – 127 V	198 – 253 V
Fans	Motor Output	0.23 kW	0.37 kW	0.56 kW
Evaporator	Fan Type	Centrifugal	Centrifugal	Centrifugal
	Max Air Flow - High/Mid/Low	440 / 410 / 385 CFM	565 / 525 / 475 CFM	700 / 650 / 595 CFM
	Max External Static Pressure	0.31 IWG	0.31 IWG	0.42 IWG
Condenser	Fan Type	Centrifugal	Centrifugal	Centrifugal
	Max Air Flow - High/Mid/Low	830 / 770 / 720 CFM	1000 / 930 / 830 CFM	1390 / 1280 / 1180 CFM
	Max External Static Pressure	0.19 IWG	0.23 IWG	0.25 IWG
Compressor	Type	Hermetic Rotary	Hermetic Rotary	Hermetic Rotary
	Output	0.75 kW	0.9 kW	1.5 kW
Refrigerant	Type	R-32	R-32	R-32
	Amount	440 g	510 g	960 g
Dimensions	W x D x H	22 x 29 x 48 in	22 x 29 x 51 in	22 x 29 x 51 in
Net Weight/Shipping Weight		177 / 216 lb	192 / 234 lb	219 / 255 lb
Power Cord	Gauge	14 AWG (3-core)	12 AWG (3-core)	12 AWG (3-core)
	Length	10 ft	10 ft	6 ft
Condensate Tank Capacity		5 gal	5 gal	5 gal
Operating Conditions	Min. – Max. @ 50% RH	70° – 113°F	70° – 113°F	70° – 113°F
Max. Duct Length	Per Cold Duct Hose	30 ft	30 ft	60 ft
	Hot Duct Hose	60 ft	60 ft	45 ft
Max. Sound Level	With Condenser Duct - High/Mid/Low	57 / 56 / 55 dB(A)	64 / 63 / 62 dB(A)	66 / 65 / 64 dB(A)
	Without Condenser Duct - High/Mid/Low	60 / 59 / 58 dB(A)	67 / 66 / 65 dB(A)	69 / 68 / 67 dB(A)

*Specifications information shown with 230 V.

All specifications subject to change without notice. See our website for the latest information. See page 8 for technical features and warranty information.



Climate Pro X14e / X20e / X26e

#	ACCESSORY	DESCRIPTION
1	Supply Air Flange Kit, 5-in dia.	Black metal flange with wire clamp and mounting screws. Use with supply air ducts.
3	Dual Duct, 5-in dia.	Plastic flange with two 4-in nozzles that extend to 2 feet in length.
4	Self-Supported Duct, 5-in dia.	Gray plastic duct with adjustable diameter that extends from 6.5 to 10 feet in length.
5	Trim Ring, 5-in dia.	Black plastic ring mounts as end caps for extension duct.
6	Supply Air Nozzle Adapter Kit, 5-in dia.	Adapter converts airflow from unit to self-supported ducts.
8	Self-Supported Duct, 12-in dia.	Gray plastic duct that extends 6.5 to 10 feet in length.
8A	Flexible Air Duct, 12-in dia. (not shown)	Wire-reinforced, accordion-style duct in 10-ft length for outdoor heat exchanger (exhaust air or return air). Includes clamp.
9	Ceiling Tile, 12-in hole, plastic	24-in x 24-in plastic white tile with 12-in hole for exhaust air self-supported duct.
9A	Ceiling Tile Kit, 12-in hole, metal	24-in x 24-in sheet metal tile with 12-in hole and built-in flange for exhaust air exhaust air or return air flexible duct. Includes clamp.
10	Outdoor Heat Exchanger Plenum	Plenum for return air to outdoor heat exchanger.
11	Condensate Pump Kit	Pump kit includes 3/8-in diameter x 20-ft length hose. Includes installation hardware. Maximum lift: 20 feet at 115V and 17 feet at 230V
12	Indoor Heat Exchanger Plenum	Plenum for return air to indoor heat exchanger.
15	Storage Cover	Durable black nylon oxford unit storage cover.

Accessory Applications

Auto Condensate Removal

Why bother with emptying the drain tank when you can install a condensate pump to remove the water automatically? This pump has a 17-ft lift capacity to reach virtually any remote drain. With the condensate pump installed, drainage is automatic and access to the compartment is no longer necessary.

#	ACCESSORY	CLIMATE PRO X14e / X20e	CLIMATE PRO X26e
11	Condensate Pump Kit	484789-0320	484789-0310

Outdoor Heat Exchanger Exhaust Air Removal

To exhaust air above the work area, attach duct to the exhaust air flange on top of the unit. When using MovinCool inside an office, simply replace the ceiling tile with the MovinCool ceiling tile and insert the duct to exhaust the air. No special tools or equipment are required for the installation.

#	ACCESSORY	CLIMATE PRO X14e / X20e	CLIMATE PRO X26e
8	Self Supported Duct, 12-in dia. ^(a)	LA481744-0410	LA481744-0410
8A	Flexible Air Duct (not shown) ^(b)	LAY45771-0060	LAY45771-0060
9	Ceiling Tile, plastic ^(c)	LA146373-8280	LA146373-8280
9A	Ceiling Tile, metal (not shown) ^(d)	484490-1030	484490-1030

Outdoor Heat Exchanger Air Intake

When balanced airflow is required, attach the outdoor heat exchanger plenum with a duct from the side of the unit to an outside air source. The air to the outdoor heat exchanger is pulled from outside the room to eliminate problems associated with negative air pressure.

#	ACCESSORY	CLIMATE PRO X14e / X20e	CLIMATE PRO X26e
8	Self Supported Duct, 12-in dia. ^(e)	LA481744-0410	LA481744-0410
8A	Flexible Air Duct (not shown) ^(f)	LAY45771-0060	LAY45771-0060
9	Ceiling Tile, plastic ^(g)	LA146373-8280	LA146373-8280
9A	Ceiling Tile, metal (not shown) ^(h)	484490-1030	484490-1030
10	Outdoor Heat Exchanger Plenum ⁽ⁱ⁾	484350-1430	484350-1180

Remote Cooling

The amount of air supplied to remote areas can be increased by attaching 10-ft extension ducts. Use the flange and clamp to secure the extension ducts to the unit. Each duct can be extended 30 to 60 feet from the unit, depending on the model. Add trim rings to the end of the extension ducts to give a finished look and keep the ducts from unraveling. The dual duct accessory can be used to divide each 5-in nozzle opening into two 4-in outlets to multiply your cooling options.

#	ACCESSORY	CLIMATE PRO X14e	CLIMATE PRO X20e / X26e
1	Supply Air Flange Kit ^(j)	481170-0450	481170-0450
3	Dual Duct	484209-0500	484209-0500
4	Self-Supported Duct, 5-in dia. ^(k)	LA481744-0420	LA481744-0420
5	Trim Ring ^(l)	481851-0200	481851-0200
6	Supply Air Nozzle Adapter Kit ^(m)	481769-0310	481769-0310
12	Indoor Heat Exchanger Plenum ^(o)	484350-1190	484350-1200

Unit Storage

This durable unit cover is perfect for storage and transportation on an open truck. Made of black nylon oxford fabric, this cover is waterproof and mildew- and UV-treated for lasting service.

#	ACCESSORY	CLIMATE PRO X14e	CLIMATE PRO X20e / X26e
15	Storage Cover	LA484420-0870	LA484420-0880

REQUIRED ACCESSORIES:

- | | | | | |
|--------|---------------|------------------------------|----------------|----------------|
| (a) 9 | (d) 8A | (g) 8 and 10 | (j) 4, 5 and 6 | (m) 1, 4 and 5 |
| (b) 9A | (e) 9 and 10 | (h) 8A and 10 | (k) 1, 5 and 6 | (o) 8 or 8A |
| (c) 8 | (f) 9A and 10 | (i) (8 and 9) or (8A and 9A) | (l) 4 | |

NOTE: All part numbers come with one part except where noted. All kits include additional pieces such as clamps and screws. See parts description box for more information.



Climate Pro D Series

Your all-in-one “dual” answer for cooling and heating.

Climate Pro D series heat pumps let you heat or cool for year-round comfort.

Key Features

- Economy and convenience — one affordable unit that provides both heating and cooling.
- Compact footprint for space-limited applications.
- Made with safety in mind — no flammable gas, no hot-to-the-touch surfaces and no sharp corners.
- Effective moisture removal — hastens drying for humid and water-damaged areas.
- Excellent back-up protection for sensitive electronics.
- Connectivity ready with remote monitoring, geolocation and performance notifications.*

**Subscription required, see your local dealer for details.*



Ideal for ...

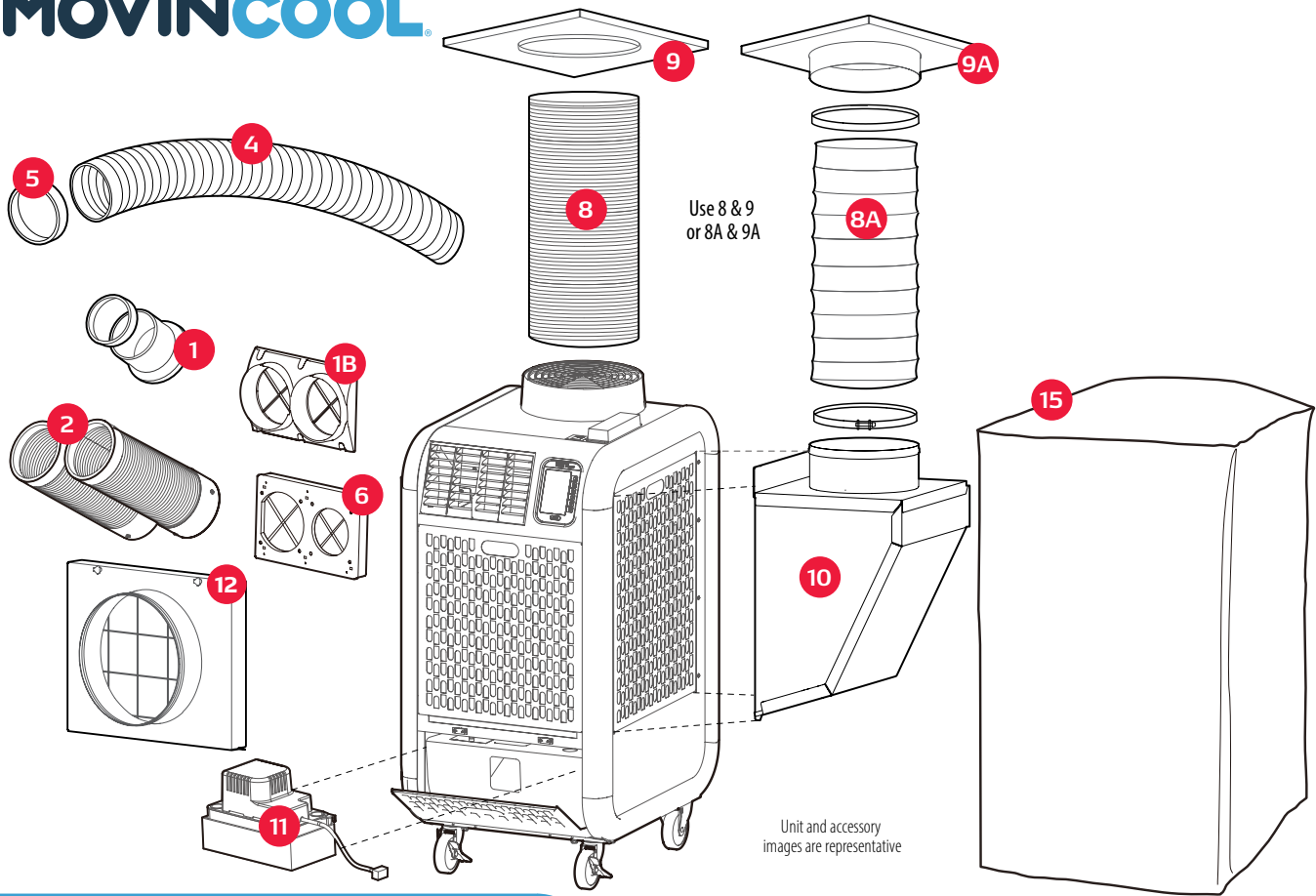
Offices
Conference Rooms
Schools
Hospitals
Retail Spaces
Warehouses
Assembly Lines
Emergency Back-up
Off-season Spot Cooling and Heating
Supplemental Cooling and Heating



Climate Pro D Series Specifications

		D12e	D18e
Electronic Features	Control Panel	Programmable	Programmable
Cooling/Heating Capacity Rating Conditions:	Cooling: 95°F @ 60% RH Heating: Indoor @ 70°F / Outdoor @ 47°F @ 50% RH	Cooling: 11,450 Btu/h Heating: 9,900 Btu/h	Cooling: 16,300 Btu/h Heating: 13,100 Btu/h
Energy Efficiency Ratio (EER)		Cooling: 9.4 Heating: 9.5	Cooling: 10.4 Heating: 10
Electrical Characteristics	Voltage Requirement (60 Hz)	1 Phase, 115 V	1 Phase, 115 V
	Total Power Consumption	Cooling: 1.20 kW Heating: 1.10 kW	Cooling: 1.56 kW Heating: 1.31 kW
	Current Consumption	Cooling: 10.9 amps Heating: 9.3 amps	Cooling: 13.8 amps Heating: 11.7 amps
	Recommended Fuse Size	15 amps	20 amps
	NEMA Plug Configuration	5-15P	5-20P
	Min. – Max. Voltage	104 – 127 V	104 – 127 V
Fans	Motor Output	0.055 kW Evaporator	0.055 kW Evaporator
		0.12 kW Condenser	0.12 kW Condenser
Indoor Heat Exchanger (Supply)	Fan Type	Centrifugal	Centrifugal
	Max. Air Flow - High/Mid/Low	420 / 340 / 280 CFM	510 / 440 / 350 CFM
	Max. External Static Pressure	0.31 IWG	0.31 IWG
Outdoor Heat Exchanger (Exhaust)	Fan Type	Centrifugal	Centrifugal
	Max. Air Flow	760 CFM	825 CFM
	Max. External Static Pressure	0.19 IWG	0.19 IWG
Compressor	Type	Hermetic Rotary	Hermetic Rotary
	Output	0.75 kW	0.9 kW
Refrigerant	Type	R-32	R-32
	Amount	530 g	780 g
Dimensions	W x D X H	22 x 27 x 47 in	22 x 27 x 51 in
Net Weight/Shipping Weight		186 / 221 lb	195 / 234 lb
Power Cord	Gauge	14 AWG (3-core)	12 AWG (3-core)
	Length	10 ft	10 ft
Condensate Tank Capacity		5 gal	5 gal
Operating Conditions	Min. – Max. @ 50% RH	Cooling: 65° – 95°F Heating: <i>Without Plenum:</i> 40° – 80°F (air entering indoor and outdoor heat exchangers) <i>With Plenum:</i> 40° – 80°F (air entering indoor heat exchanger) 24° – 80°F (air entering outdoor heat exchanger)	Cooling: 65° – 95°F Heating: <i>Without Plenum:</i> 40° – 80°F (air entering indoor and outdoor heat exchangers) <i>With Plenum:</i> 40° – 80°F (Air entering indoor heat exchanger) 24° – 80°F (air entering outdoor heat exchanger)
Max. Equivalent Duct Length	Supply Duct Hose	30 ft	25 ft
	Exhaust Duct Hose	100 ft	100 ft
Max. Sound Level	With Condenser Duct - High/Mid/Low	61 / 60 / 59 dB(A)	65 / 64 / 63 dB(A)
	Without Exhaust Duct - High/Mid/Low	62 / 61 / 60 dB(A)	66 / 65 / 64 dB(A)

All specifications subject to change without notice. See our website for the latest information. See page 8 for technical features and warranty information.



Climate Pro D12e / D18e

#	ACCESSORY	DESCRIPTION
1	Supply Air Flange Kit, 5-in dia.	Black metal flange with wire clamp and mounting screws. Use with self-supported ducts.
1B	Quick Connect Supply Air Flange Kit, 5-in dia.	Black plastic flange with mounting screws. Use with Quick Connect Nozzle Kit.
2	Quick Connect Supply Air Nozzle Kit, 5-in dia.	Gray plastic nozzle that extends up to 2 feet in length. Includes trim ring. Each nozzle sold separately.
4	Self-Supported Duct, 5-in dia.	Gray plastic duct with adjustable diameter that extends from 6.5 to 10 feet in length.
5	Trim Ring, 5-in dia.	Black plastic ring mounts as end caps for extension duct.
6	Supply Air Nozzle Adapter Kit, 5-in dia.	Adapter converts airflow from louvers to nozzles or air ducts. Two nozzles or extension ducts.
8	Self-Supported Duct, 12-in dia.	Gray plastic duct that extends 6.5 to 10 feet in length.
8A	Flexible Air Duct, 12-in dia. (not shown)	Wire-reinforced, accordion-style duct in 10-ft length for outdoor heat exchanger (exhaust air or return air). Includes clamp.
9	Ceiling Tile, 12-in dia hole, plastic	24-in x 24-in white plastic tile with 12-in hole for exhaust air self-supported duct.
9A	Ceiling Tile Kit, 12-in hole, metal	24-in x 24-in sheet metal tile with 12-in hole and built-in flange for exhaust air or return air flexible duct. Includes clamp.
10	Outdoor Heat Exchanger Plenum	Plenum for return air to outdoor heat exchanger.
11	Condensate Pump Kit, 115V	Pump kit includes 3/8-in diameter x 20-ft length hose. Includes installation hardware. Maximum lift: 20 feet
12	Indoor Heat Exchanger Plenum	Plenum for return air to indoor heat exchanger.
15	Storage Cover	Durable black nylon oxford unit storage cover.

Accessory Applications

Auto Condensate Removal

Why bother with emptying the drain tank when you can install a condensate pump to remove the water automatically? This pump has a 17-ft lift capacity to reach virtually any remote drain.

#	ACCESSORY	CLIMATE PRO D12e / D18e
11	Condensate Pump Kit	484789-0320

Exhaust Air Removal & Supply Air Intake

MovinCool makes removing exhaust easy. Simply replace the existing ceiling tile with the MovinCool ceiling tile accessory. Place the self-supported or flexible duct on top of the unit and insert it into the ceiling tile. That's all it takes. When balanced airflow is required, attach the outdoor heat exchanger plenum with a duct from the side of the unit to an outside air source. The air to the condenser is pulled from outside the room to eliminate problems associated with negative air pressure.

#	ACCESSORY	CLIMATE PRO D12e	CLIMATE PRO D18e
8	Self-Supported Duct, 12-in dia. ^(a)	LA481744-0410	LA481744-0410
8A	Flexible Duct Kit, 12-in dia. (not shown) ^(b)	LAY45771-0060	LAY45771-0060
9	Ceiling Tile, plastic ^(c)	LA146373-8280	LA146373-8280
9A	Ceiling Tile, metal (not shown) ^(d)	484490-1030	484490-1030
10	Outdoor Heat Exchanger Plenum ^(e)	484350-1340	484350-1490

Spot or Remote Cooling

To use the Climate Pro D Series models to spot cool or heat specific areas, use the nozzle adapter in place of the standard louvers. Attach supply air extension ducts to the adapter to cool or heat remote spots. Trim rings give a finished look and keep the ducts from unraveling.

#	ACCESSORY	CLIMATE PRO D12e	CLIMATE PRO D18e
1	Supply Air Flange Kit * ^(f)	481170-0450	481170-0450
1B	Quick Connect Supply Air Flange Kit * ^(g)	481170-0480	481170-0480
2	Quick Connect Supply Air Nozzle Kit * ^(h)	484209-0480	484209-0480
4	Self-Supported Duct, 5-in. dia. ⁽ⁱ⁾	LA481744-0420	LA481744-0420
5	Trim Ring ^(j)	481851-0200	481851-0200
6	Supply Air Nozzle Adapter Kit ^(k)	481769-0280	481769-0280
12	Indoor Heat Exchanger Plenum ^(l)	484350-1190	484350-1200

*Order one or two parts depending if one or two nozzles, flanges or ducts are needed.

Unit Storage

This durable unit cover is perfect for storage and transportation on an open truck. Made of black nylon oxford fabric, this cover is waterproof and mildew- and UV-treated for lasting service.

#	ACCESSORY	CLIMATE PRO D12e	CLIMATE PRO D18e
15	Storage Cover	LA484420-0840	LAY84420-0690

REQUIRED ACCESSORIES:

^(a) 9 for exhaust air removal and 9 & 10 for supply air intake	^(c) 8 for exhaust air	^(d) 8A for exhaust air removal and	^(e) 8 & 10 for supply air intake (8 and 9) or (8A and 9A)	^(f) 4, 5 and 6	^(g) 2 and 6	^(h) 1B and 6	⁽ⁱ⁾ 1, 5 and 6	^(j) 4	^(k) (1B and 2) or (1, 4 and 5)	^(l) 8 or 8A	NOTE: All part numbers come with one part except where noted. All kits include additional pieces such as clamps and screws. See parts description box for more information.
---	----------------------------------	---	--	---------------------------	------------------------	-------------------------	---------------------------	------------------	---	------------------------	---

MOVINCOOL®

The #1 Spot Cooling Solution

DENSO Products and Services Americas, Inc.
3900 Via Oro Avenue
Long Beach CA 90810 USA
800-264-9573



[MovinCool.com](https://www.MovinCool.com)

