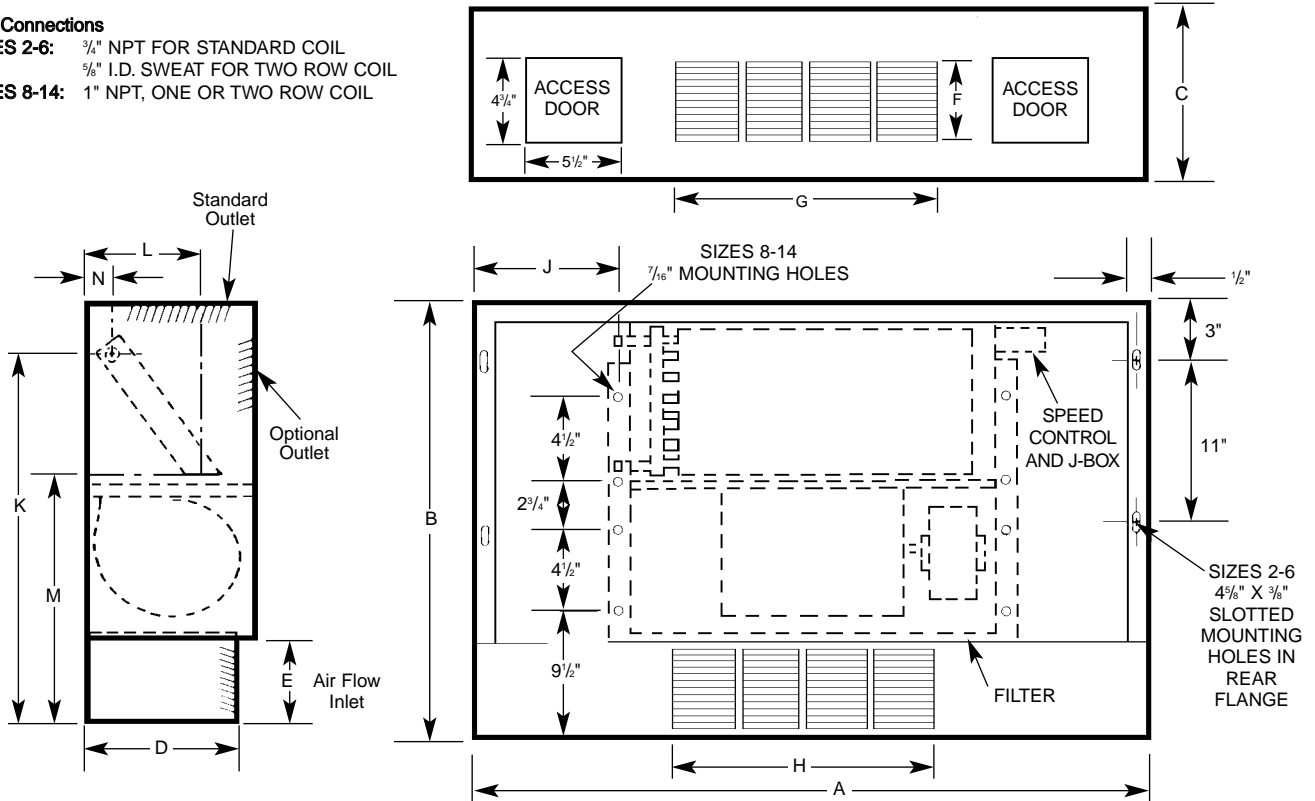




SUBMITTAL DATA floor mounted steam/hot water cabinet unit heaters model C, sizes 2-14

Coil Connections

SIZES 2-6: 3/4" NPT FOR STANDARD COIL
5/8" I.D. SWEAT FOR TWO ROW COIL
SIZES 8-14: 1" NPT, ONE OR TWO ROW COIL



NOTE: Left hand piping is standard, right hand piping available when specified.
Bottoms of end compartments are open for piping and electrical access.

Cabinet Dimensions (inches)

Unit Size	A	B	C	D	E	F	G	H	J	Approx. Shipping Weight lbs.
2	38-3/4	25	9-3/4	8	5	5-1/8	15-5/8	19-5/8	-	80
3	43-3/4	25	9-3/4	8	5	5-1/8	19-5/8	23-5/8	-	90
4	48-3/4	25	9-3/4	8	5	5-1/8	27-5/8	27-5/8	-	110
6	61-3/4	25	9-3/4	8	5	5-1/8	39-5/8	39-5/8	-	120
8	71-3/4	28	12	10	7	5-1/8	47-5/8	30-5/8	9-3/4	160
10	71-3/4	28	12	10	7	5-7/8	47-5/8	39-5/8	9-3/4	165
12	83-3/4	28	12	10	7	5-1/8	59-5/8	51-5/8	9-3/4	185
14	83-3/4	28	12	10	7	5-7/8	59-5/8	51-5/8	9-3/4	190

Filter Dimensions (inches) ①

Unit Size	Filter Dimensions
2	8-1/2 x 20-3/4 x 1/2
3	8-1/2 x 25-3/4 x 1/2
4	8-1/2 x 30-3/4 x 1/2
6	8-1/2 x 43-3/4 x 1/2
8 & 10	10-3/4 x 49-3/4 x 1/2
12 & 14	10-3/4 x 61-3/4 x 1/2

① Filters are permanent/cleanable.

Motor Ratings (115 volts/60hz/1Ø)

Unit size	Motor qty.	Standard Motor		PSC Motor Option 140		High Static Motor option 141	
		HP	Total Amps	HP	Total Amps	HP	Total Amps
2 + 3	1	1/30	1.7	1/30	0.70	.04	4.60
4 + 6	1	1/20	2.37	1/20	1.05	0.4	4.60
8 + 10	1	1/30	4.07	1/30	1.75	0.8	9.20
	1	1/20	4.07	1/20	1.75	0.8	9.20
12 + 14	2	1/20	4.74	1/20	2.10	0.8	9.20

Coil Connection Dimensions (inches)

Unit Size	K	L	M	N
2 thru 6	22-1/2	7-3/8	15-1/4	2-3/8
8 thru 14	25-5/8	9-1/4	18	1-5/8