



Pictured: Storm Torque

**Direct Drive  
Storms and  
Conversion Kits  
now available!**

**J&D  
Manufacturing**

Exhaust Fans

# **STORM SERIES**

## **55" FIBERGLASS EXHAUST FANS**

# Which **55"** Storm Exhaust Fan is best for *you*?

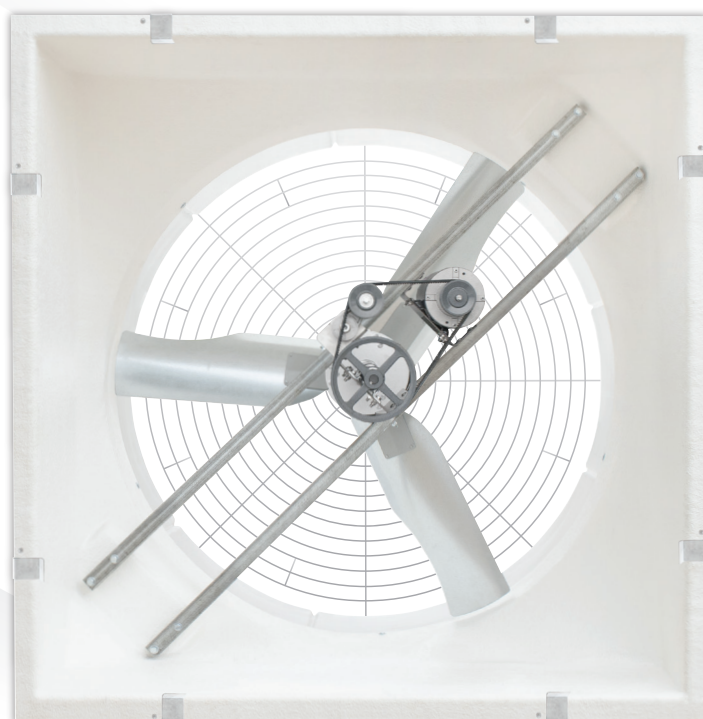
## Storm Torque

- Maintains a continuous high level of performance with no power loss or reduction from aging belts and pulleys
- VFD compatible - *not included*
- Smooth and quiet operation



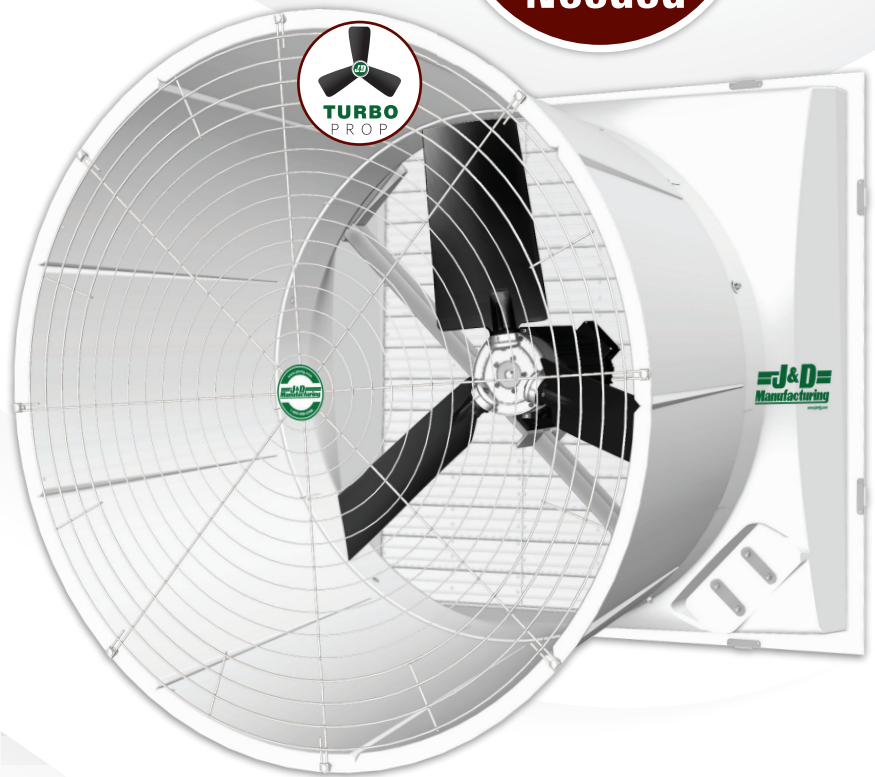
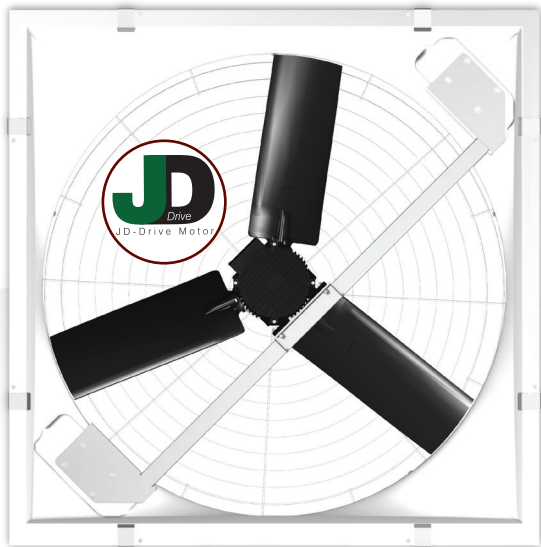
## Belt Drive Storm

- Tool-less belt changing
- Shaft bearings are pre-lubricated and feature an eccentric locking collar with set screw
- Cast aluminum or galvanized prop options



# Direct Drive Storm

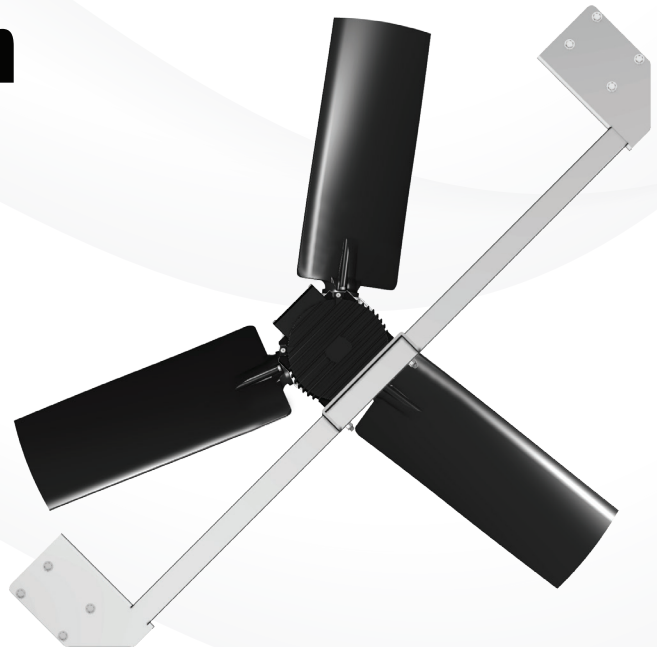
**Variable  
Speed  
No VFD  
Needed**



- Save money on:
  - Energy bill
  - Labor/maintenance bill
- High performance
- No maintenance

# Direct Drive Storm Conversion Kit

- Easily upgrade your Belt Drive Storm to a Direct Drive Storm
- Includes installation instructions and drilling templates
- Experience high-performing, energy-efficient, maintenance-free operation when you make the change today!



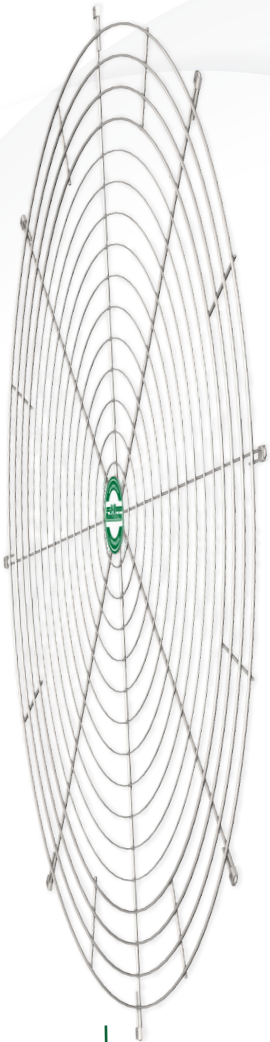


# Direct



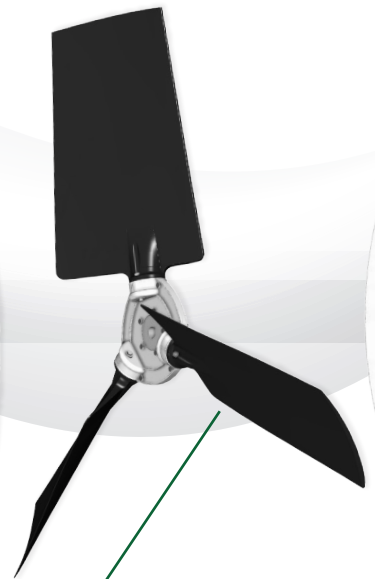
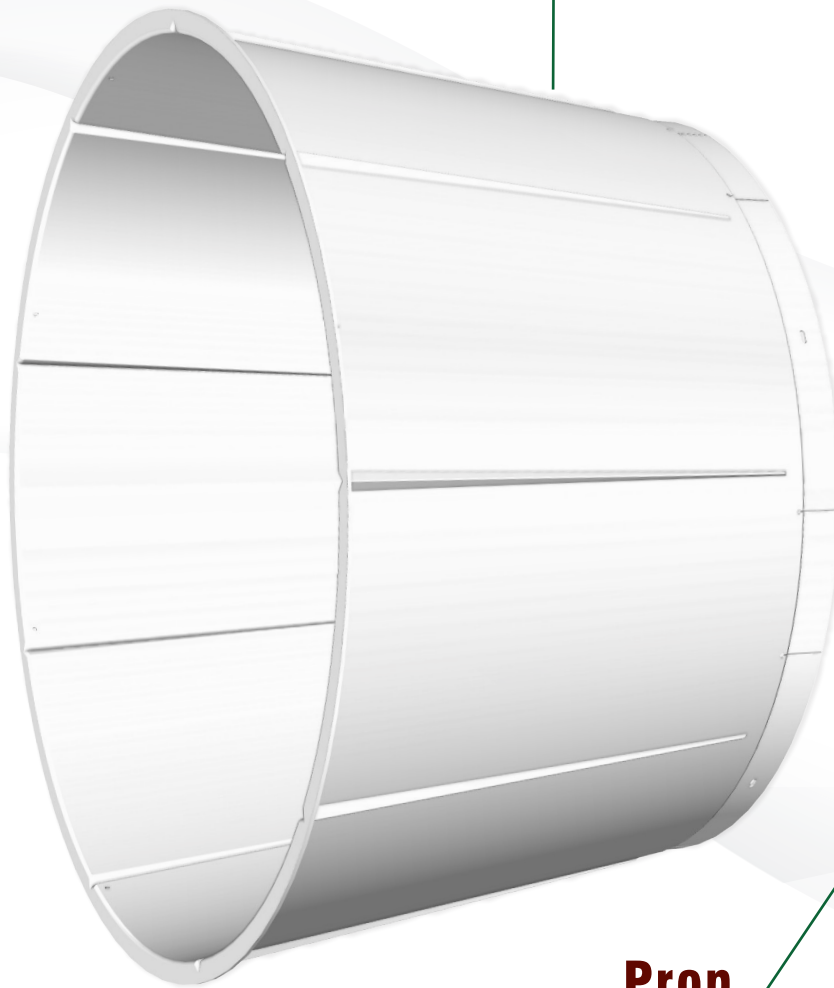
## Slanted Cone

- Deep for superior performance



## Guard

- Corrosion-resistant stainless-steel



## Prop

- 3 Glass-filled poly composite blades for reinforcement
- Die-cast aluminum hub
- Airfoil profile
- Optimally pitched for increased performance





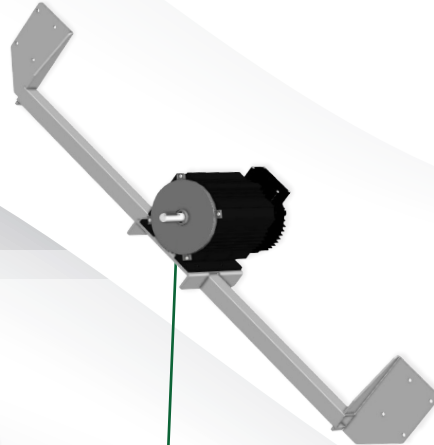
# Drive Storm

## Motor Frame

- Motor-centric with minimal air impedance
- 304 Stainless-steel for corrosion resistance

## Shutter

- Aluminum or poly options
- Corrosion-resistant



## Housing

- Rugged, corrosion-resistant fiberglass
- Drainage holes to reduce moisture

## JD-Drive Motor

- PM Direct Drive, efficient 2.2kW motor
- Internal Motor Drive
  - Soft Start
  - Variable speed
  - Precise and uniform speed control
- Surge Protected



- IP65-Rated
- Industrial extruded aluminum housing
- Will not interfere with RFID
- Pre-wired with 8' line power cord and 8' signal cord

# Direct Drive Storm Conversion Kit

Want an upgrade? Change your Belt Drive Storm to a Direct Drive Storm with easy, step-by-step instructions!

## Make the Change

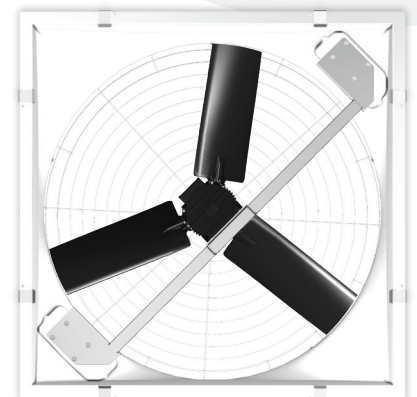
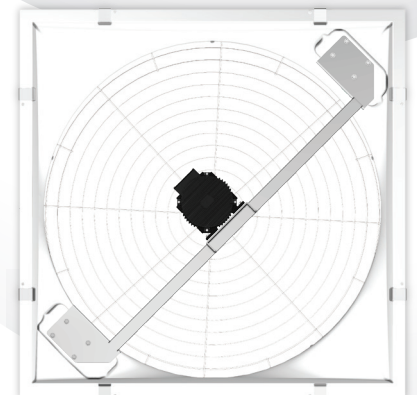
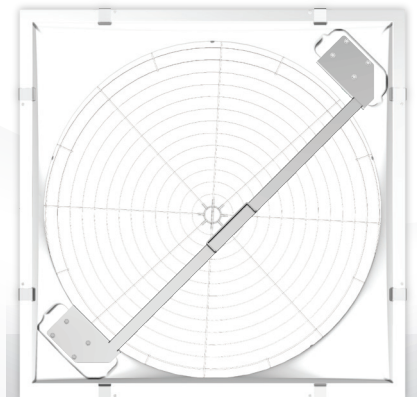
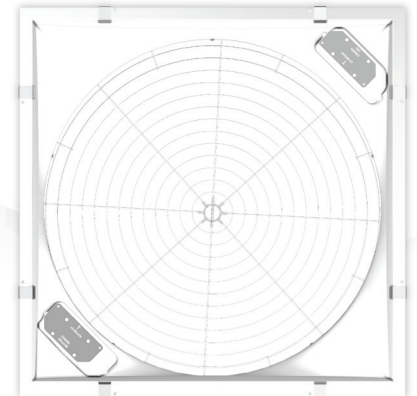
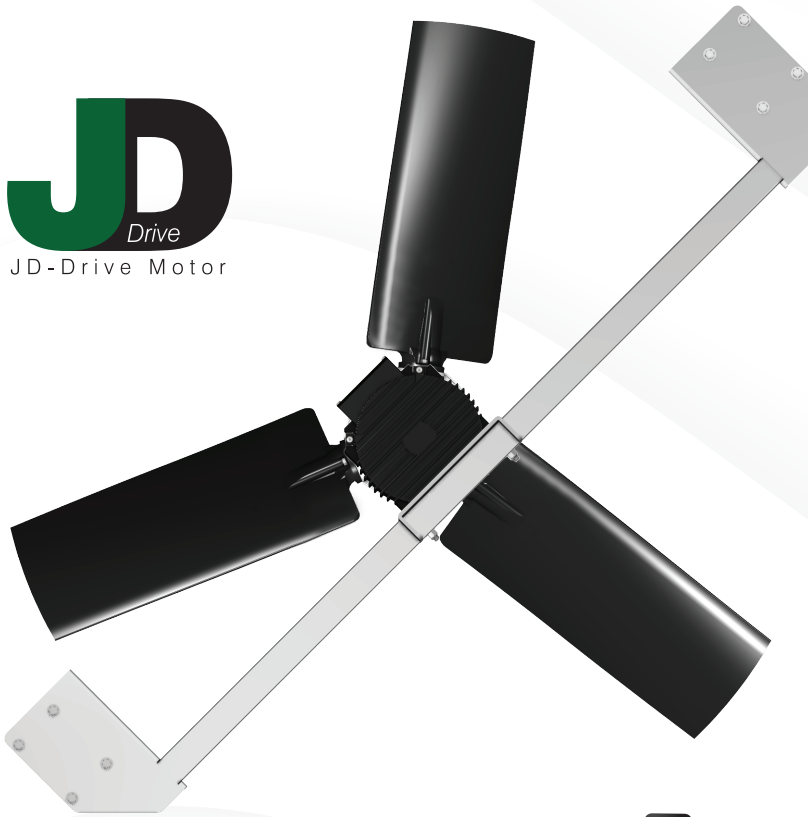
Simple and easy  
Upgrade what you have

## Everything to Gain

Improved performance  
Precise control

## Nothing to Maintain

No belts  
No pulleys  
No greasing



Part #	Ph	Spd	Drive	Prop
<b>Single Phase</b>				
VRJ55P3PM221A	1	1/Var^	PM-D	3-Ply
<b>Three Phase wired for 190-240V</b>				
VRJ55P3PM223B	3	1/Var^	PM-D	3-Ply
<b>Three Phase wired for 380-460V</b>				
VRJ55P3PM223C	3	1/Var^	PM-D	3-Ply



# How can *you* save with the Direct Drive Storm?

- **Labor and Maintenance Costs**

No belts to change or pulleys to maintain.

- **Energy Costs**

On the hottest days when moving a lot of air is necessary, the Direct Drive Storm can keep up and outperform the other Storm fans. When running the Direct Drive Storm at maximum speed is not needed, decreasing the speed will allow you to ***\$SAVE BIG*** on your energy bill.

## Belt Drive - VSA55G3C23-SL

Average Daily Electricity Cost: \$6.49

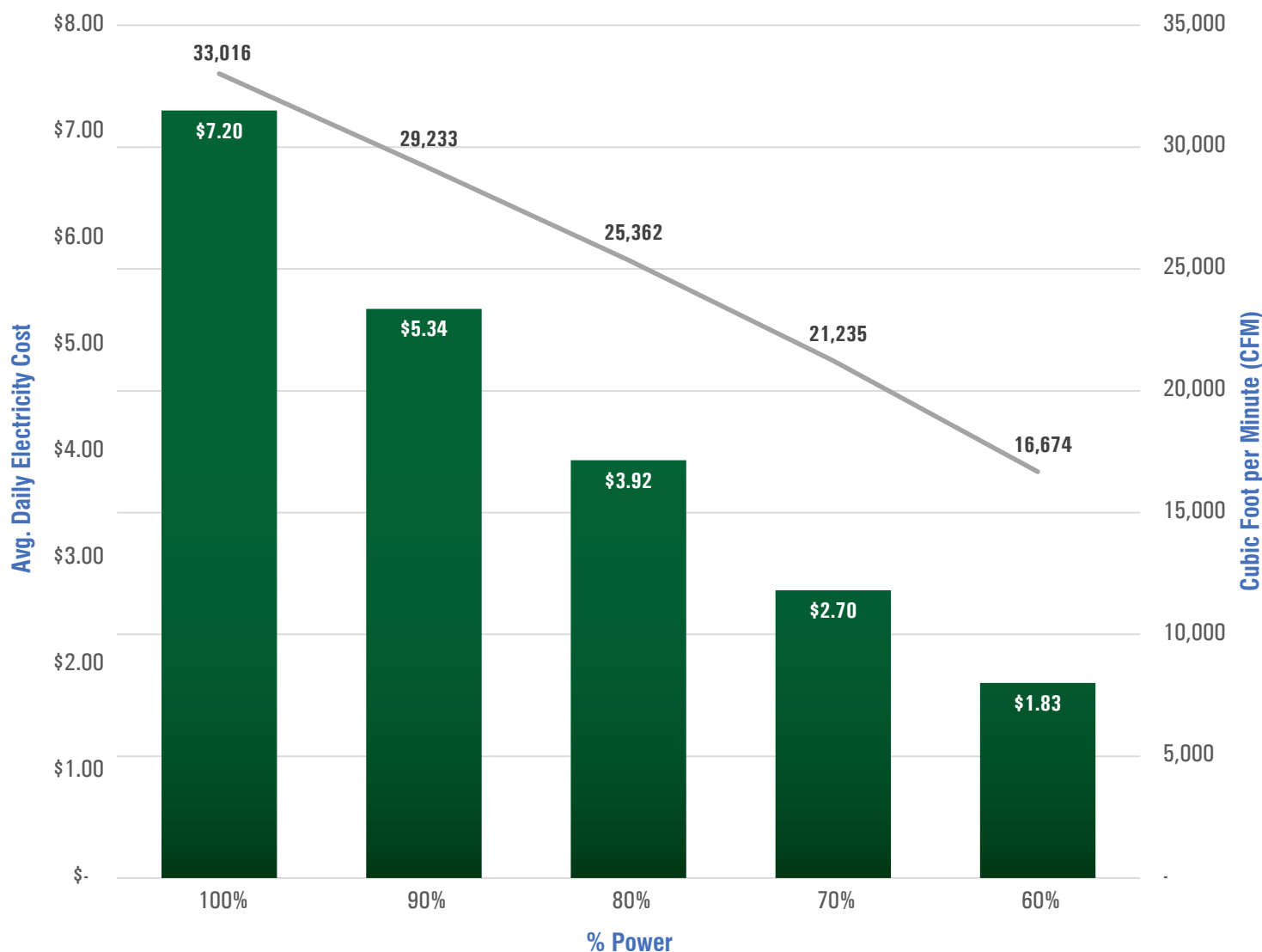
## Torque Drive – VMTA55G3C23-SL

Average Daily Electricity Cost: \$5.59

## Direct Drive - VSA55P3CPM223C-SL

#Request  
The Test

Direct Drive Storm - VSA55P3CPM223C - SL







Pictured: Direct Drive Storm

**YOUR  
VENTILATION  
EXPERTS**

**J&D  
Manufacturing**



**J&D  
Manufacturing**

6200 US-HWY 12, EAU CLAIRE, WISCONSIN 54701



Family Owned & Operated in Eau Claire, Wisconsin

1-800-998-2398 | [www.jdmfg.com](http://www.jdmfg.com)