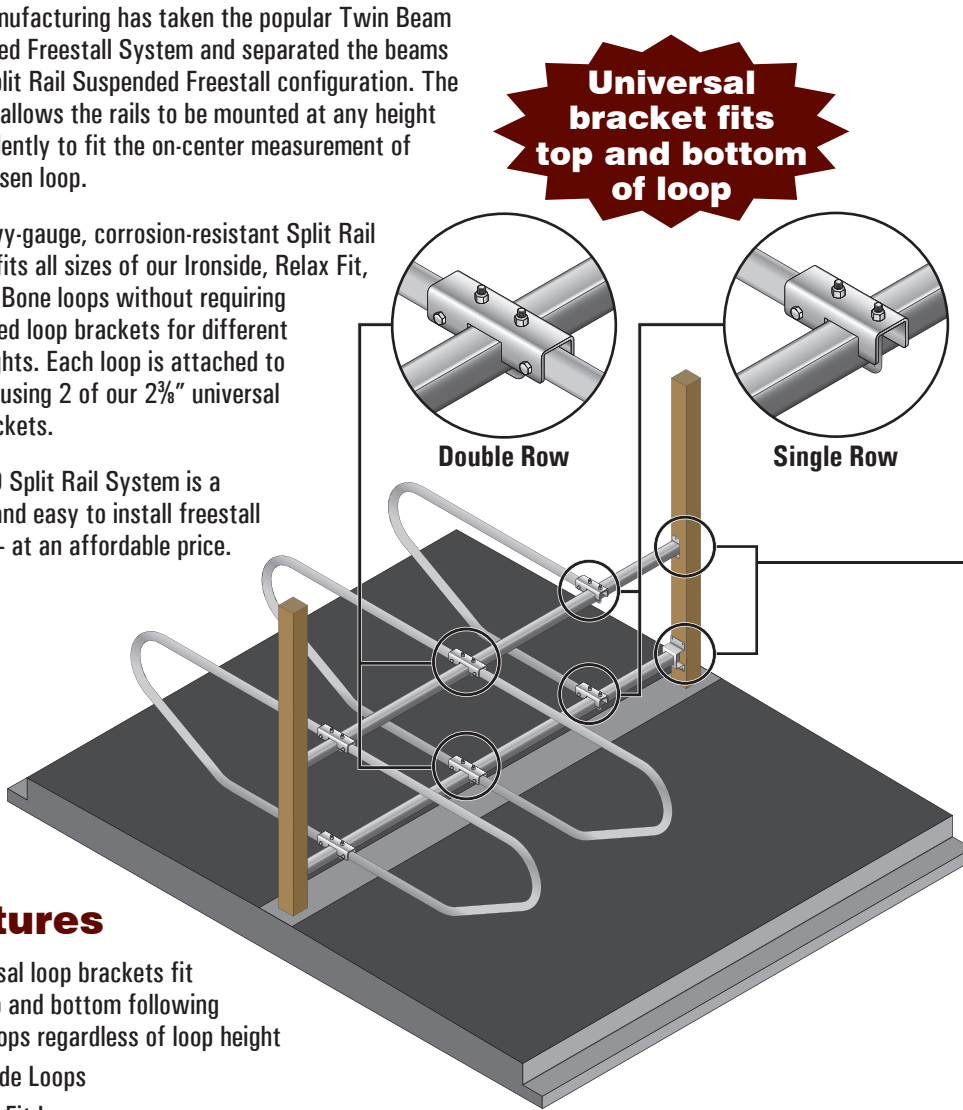


Split Rail Suspended Freestall System

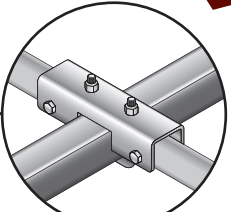
J&D Manufacturing has taken the popular Twin Beam Suspended Freestall System and separated the beams into a Split Rail Suspended Freestall configuration. The split rail allows the rails to be mounted at any height independently to fit the on-center measurement of your chosen loop.

The heavy-gauge, corrosion-resistant Split Rail System fits all sizes of our Ironside, Relax Fit, and Dog Bone loops without requiring specialized loop brackets for different loop heights. Each loop is attached to the rails using 2 of our 2 $\frac{3}{8}$ " universal loop brackets.

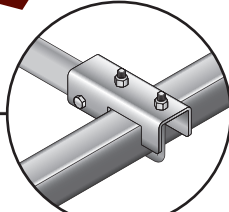
The J&D Split Rail System is a flexible and easy to install freestall system – at an affordable price.



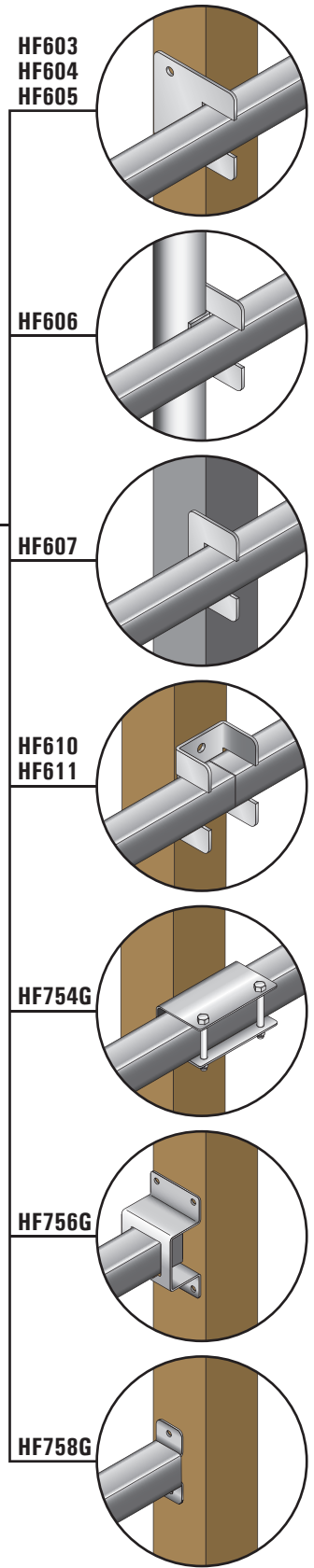
Universal bracket fits top and bottom of loop



Double Row



Single Row



HF603
HF604
HF605

HF606

HF607

HF610
HF611

HF754G

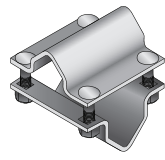
HF756G

HF758G

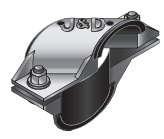
Features

- Universal loop brackets fit the top and bottom following 2 $\frac{3}{8}$ " loops regardless of loop height
 - Ironside Loops
 - Relax Fit Loops
 - Dog Bone Loops
- Loops suspend from 3"x3" Split Rails that can be mounted to building columns or up-posts
- All concrete work can be done without obstructions, saving you money on labor and installation costs
- Stall system stays high and dry for corrosion resistance and longer life
- No stall posts in the bedding to rust or corrode
- Increased side-to-side head room and lunge area
- Fully adjustable cow stall spacing
- Tight fitting 1/4" steel control rail clamps with 1/2" carriage bolts or our rubber cushion control rail clamp
- Compatible with any bedding system

Great system for large outside rows



HF42AB
HF42B

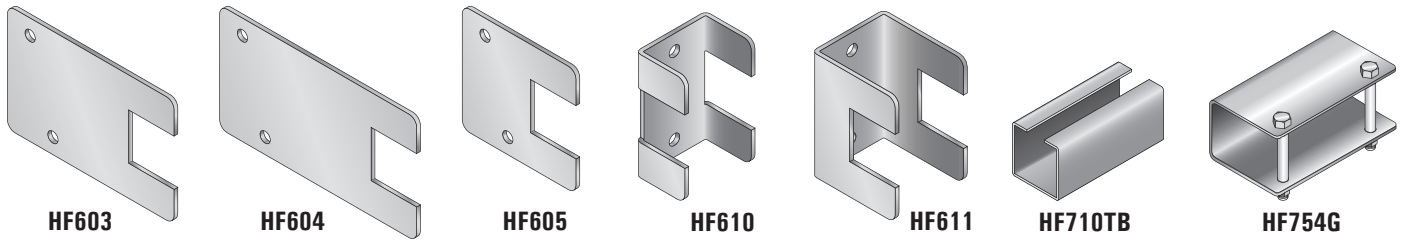


HF43*

FREESTALL SYSTEMS

⚠ WARNING: This product can expose you to chemicals including lead, which is known to the State of California to cause cancer and birth defects or other reproductive harm. For more information go to www.P65Warnings.ca.gov/product.

Split Rail Suspended Freestall System



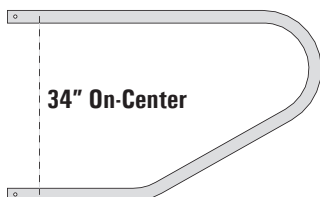
Part #	Description
Rail	
RPGA311288	Square Tube, 3" x 3", 288", 11 ga. Galvanized
Rail Mounts & Splices	
HF603	Mount, Split Rail Face, Bolt to Square Post, Weld to Rail, Ext. for 6" Curb, 1/4" Pntd Slvr
HF604	Mount, Split Rail Face, Bolt to Square Post, Weld to Rail, Ext. for 8" Curb, 1/4" Pntd Slvr
HF605	Mount, Split Rail Face, Bolt to Square Post, Weld to Rail, 1/4" Painted Silver
HF606	Mount, Split Rail Face, Weld-On to 4" Round Post, Weld to Rail, 1/4" Painted Silver
HF607	Mount, Split Rail Face, Weld to Sq. Metal Post/Column, Weld to Rail, 1/4" Painted Slvr
HF610	Mount & Splice, Split Rail Face, Bolt/Weld to Sq. Post, Weld to Rail, 1/4" Painted Slvr
HF611	Mount & Splice, Split Rail Face, Bolt/Weld to Sq. Post, Weld to Rail, Ext., 1/4" Pntd Slvr
HF710TB	Splice Sleeve, Interior, for 3" x 3" Square Tube, 12 ga. Galvanized
HF754G	Mount, Split Rail Face, Bolt/Weld to Post, 8 ga. Galvanized with Hardware
HF756G	Mount, Split Rail, Bolt to Wall or Between Posts, Tube Exterior, 8 ga. Galvanized
HF758G	Mount, Split Rail, Bolt to Wall or Between Posts, Tube Interior, 8 ga. Galvanized
Stall Brackets	
HF600	Bracket, Split Rail Single Row, for 2 3/8" Loop, 1/4" HD Galv. with Hardware
HF601	Bracket, Split Rail Double Row, for 2 3/8" Loop, 1/4" HD Galv. with Hardware
1.9" Control Rails, Clamps, & Mounts	
TR1911	Rail, Control, 1.9" x 288", 11 ga. Galvanized, Swaged
HF42AB	Clamp, Control Rail, 1.9" x 2 3/8", 1/4" Steel, HD Galv., with 1/2" Bolts
HF43*	Clamp, Control Rail, 1.9" x 2 3/8", HDG Ductile Cast Iron w/Rubber Cushion & Hardware
HF919HV	Mount, (2) Horz/Vert, for 1.9" Pipe, HD Galv., with Hardware
2 3/8" Control Rails, Clamps, & Mounts	
TR2375	Rail, Control, 2 3/8" x 288", 10 ga. Galvanized, Swaged
HF42B	Clamp, Control Rail, 2 3/8" x 2 3/8", 1/4" Steel, HD Galv., with 1/2" Bolts
HF819HV2	Mount, (2) Horz/Vert, for 2 3/8" Pipe, HD Galv., with Hardware

*Must be retightened 3 months after initial install, and yearly thereafter

Cow Ironside Loops

2 3/8" OD
10-Gauge

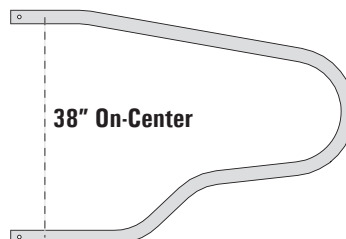
Part#	Length
TF856-H	5'6"
TF860-H	6'0"
TF866-H	6'6"
TF800-H	7'0"
TF876-H	7'6"
TF880-H	8'0"
TF886-H	8'6"



Cow Relax Fit Loops

2 3/8" OD
10-Gauge

Part#	Length
TFY856-H	5'6"
TFY860-H	6'0"
TFY866-H	6'6"
TFY870-H	7'0"
TFY876-H	7'6"
TFY880-H	8'0"
TFY886-H	8'6"



Cow Dog Bone Loops

2 3/8" OD
10-Gauge

Part#	Length
TFD860	6'0"
TFD866	6'6"
TFD800	7'0"
TFD876	7'6"
TFD880	8'0"
TFD886	8'6"



⚠ WARNING: This product can expose you to chemicals including lead, which is known to the State of California to cause cancer and birth defects or other reproductive harm. For more information go to www.P65Warnings.ca.gov/product.