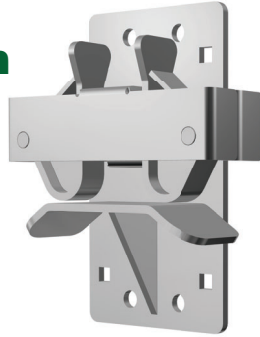


Self Catching Gate Latches & Mounting Brackets

HP40W - Heavy-Duty Spring Loaded Self Catching Latch

- Two-way spring loaded latch
- Bolt onto a wall or wood post (*bolts not included*)
- Weld or bolt onto a steel post using our optional mounting brackets
- Corrosion-resistant, hot dip galvanized finish



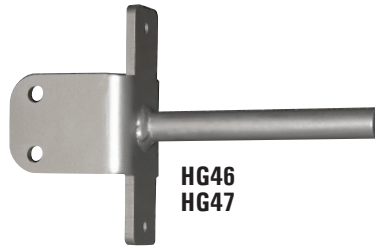
HP40W

HP70 - Self Catching Latch and Peg Set

- Two-way self catching latch
- Lockable using standard padlock (*not included*)
- Bolt onto a wall or wood post (*bolts not included*)
- Weld or bolt onto a steel post using our optional mounting brackets
- Includes bolt-on peg for 1 5/8" or 1.9" round tube, or 2" square tube
- Durable black powder coat finish

HG46 & HG47 - Pegs for Self Catching Latches

- 5 3/4" long 3/4" solid steel peg
- Bolt-on pegs available for 2" or 2 1/4" square tube
- HG47 is a great addition to our J&D Make-A-Gates



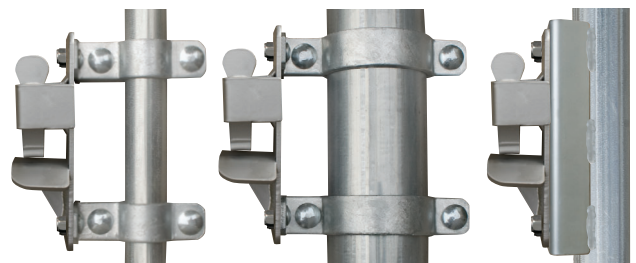
HG46
HG47



HP70

Optional Mounting Brackets for Self Catching Latches

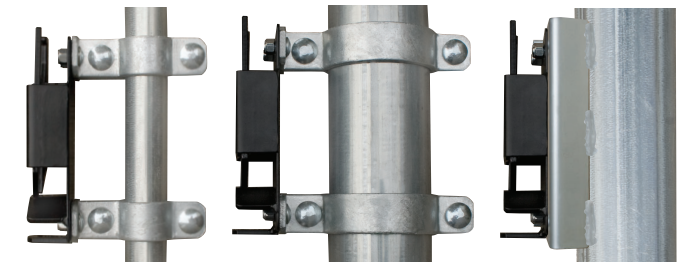
- Brackets compatible with HP40W and HP70 gate latches
- HGF320 & HGF325 brackets can be bolted to 1 5/8" or 4" tubes and are hot dip galvanized for long life
- HGF350 weld on bracket fits 2 7/8" post, 4" post, or a flat surface and has painted finish for easy welding



HGF320

HGF325

HGF350



HGF320

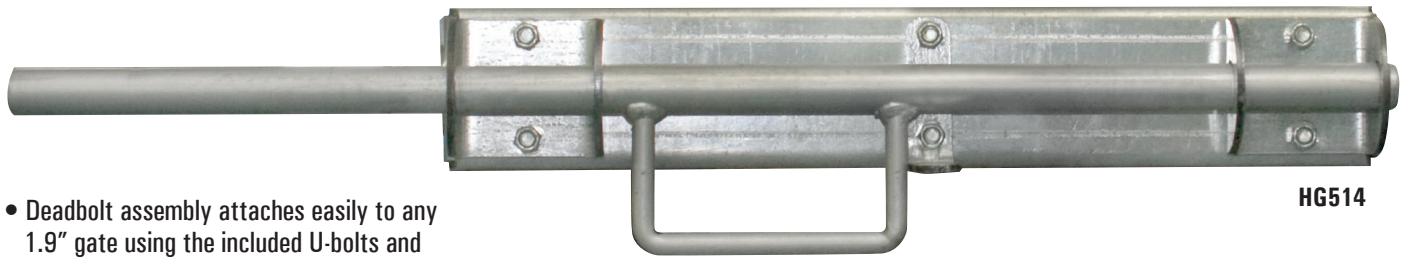
HGF325

HGF350

Part#	Description
Gate Latches	
HP40W	Wall Latch, Self Catching, HDG
HG46	Peg, Bolt-On for 2" Gates, Silver Powder Coat
HG47	Peg, Bolt-On for 2 1/4" Gates, fits Make-A-Gate, HDG
HP70	Wall Latch and Peg, Black Powder Coat, Packaged
Gate Latch Mounting Options	
HGF320	(2) Gate Latch Mount, Bolt-On, 1.66" Post, HDG, w/Hrdwr
HGF325	(2) Gate Latch Mount, Bolt-On, 4" Post, HDG, w/Hrdwr
HGF350	Latch Bracket, Weld-On, 2 7/8" or 4" Post, Painted Silver, w/Hrdwr

⚠ WARNING: This product can expose you to chemicals including lead, which is known to the State of California to cause cancer and birth defects or other reproductive harm. For more information go to www.P65Warnings.ca.gov/product.

Deadbolt Assembly & Accessories



HG514

- Deadbolt assembly attaches easily to any 1.9" gate using the included U-bolts and nylock nuts
- Heavy-duty G90 8-gauge galvanized deadbolt
- Locking rod slides into the bolt-on or weld-on latch pockets

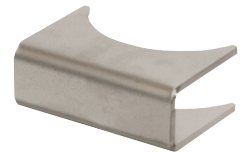
Part#	Description
HG514	Deadbolt Assembly, Clamped or Welded, for 1.9" Gates
HG518	Latch Pocket, Deadbolt, Bolt-On or Weld-On Flat Surface
HG520	Latch Pocket, Deadbolt, Bolt-On 2 7/8" Tube
HG522	Latch Pocket, Deadbolt, Bolt-On 4" Tube
HG524	Latch Pocket, Deadbolt, Weld-On 2 7/8"
HG526	Latch Pocket, Deadbolt, Weld-On 4"



HG518



HG520
HG522



HG524
HG526

Gate Wheel

HG60 - Standard Gate Wheel

- Must be mounted at height needed
- Reduces stress on hinges and posts
- Eliminates gate sag
- Tough, rust-resistant galvanized steel
- Smooth rolling 6" heavy-duty plastic wheel
- Fits 1 5/8", 1.9", and 2" round or square tube gates



HG60

Part#	Description
HG60	Gate Wheel

Dimensions	
Overall bracket height	8"
Overall bracket and wheel height	10"

⚠ WARNING: This product can expose you to chemicals including lead, which is known to the State of California to cause cancer and birth defects or other reproductive harm. For more information go to www.P65Warnings.ca.gov/product.