

ES Shutter Fan

EXHAUST FANS

Housing

- Heavy-duty
- Galvanized
- 18-gauge

Guard

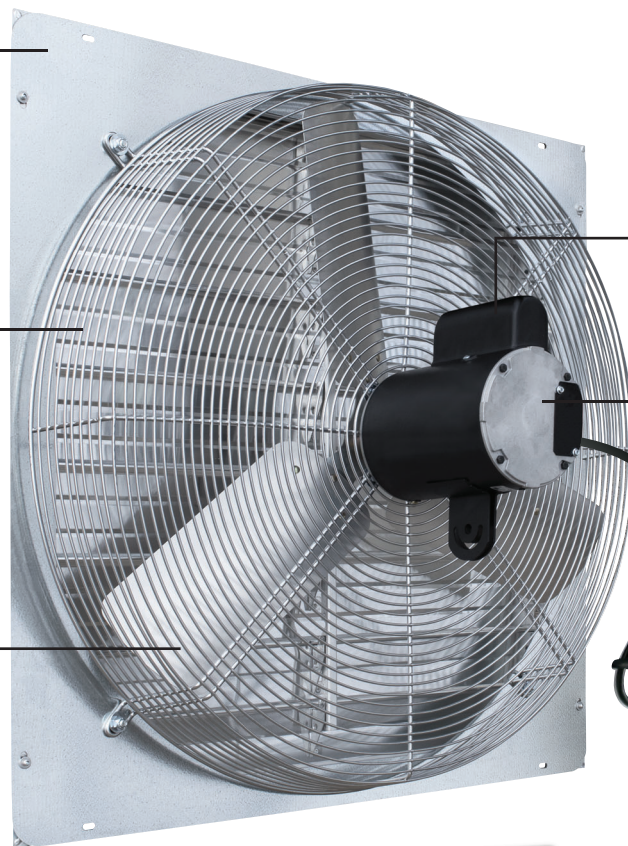
- Meets OSHA 1910.212(a)(5) requirements to mount at any height on inlet side of fan (*shutter side should be 7' above ground*)
- Coated steel guard for easy cleaning
- Strong

Prop

- Balanced
- 3-bladed
- Corrosion-resistant coated steel hub

Shutter

- High efficiency aluminum
- Fortifying ribs for added strength
- With tie bar to reduce shutter flapping and opening on windy days



Capacitor

- Sealed and protected

Motor

- High efficiency
- Fully enclosed
- Maintenance-free
- Direct drive
- Standard motors have a **2 Year Warranty**
- Gold Star motors have a **3 Year Warranty**

Corded Models

- Pre-wired for 115V
- 3-prong plug end
- "No Electrician Needed" installation

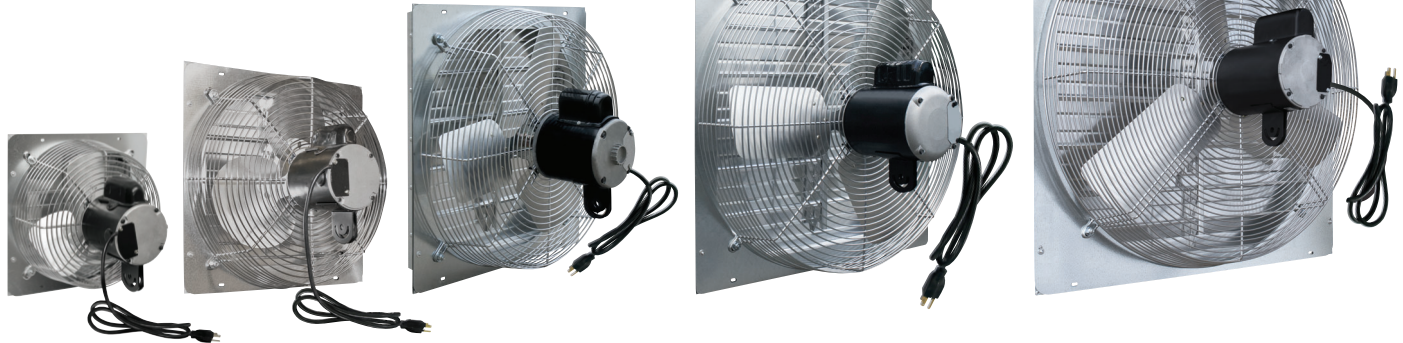


**No
Electrician
Needed
for Corded Models**

⚠ WARNING: This product can expose you to chemicals including lead, which is known to the State of California to cause cancer and birth defects or other reproductive harm. For more information go to www.P65Warnings.ca.gov/product.

ES Shutter Fan

J&D Manufacturing's ES Shutter Fan is a durable agriculture grade exhaust fan perfect for barns, greenhouses, building peaks, and more. ES Shutter Fans are available without a cord or pre-wired with a cord and plug for "No Electrician Needed" installation. Fans ship fully assembled out of the box so you're up and running in no time!



Features

- Smooth and quiet operation
- Ships fully assembled and ready for installation

Part#	Size	Ph	Spd	@0.10" SP		Prop	Rough Opening
				CFM	Watt		
With Cord							
Single Phase							
VES10C	10"	1	3(H) (M) (L)	464 373 293	5.5 7.2 6.4	3-Alm	12½" x 12½"
VES12C	12"	1	1/Var^	748	8.7	3-Alm	12½" x 12½"
VES161C	16"	1	1/Var^	1,034	10.1	3-Alm	16½" x 16½"
VES201C	20"	1	1/Var^	941	9.0	3-Alm	20½" x 20½"
VES20C	20"	1	1	2,697	8.9	3-Alm	20½" x 20½"
* VES24C	24"	1	1	3,849	7.9	3-Alm	24½" x 24½"
VES30C	30"	1	1	5,801	11.0	3-Alm	30½" x 30½"
No Cord							
Single Phase							
VES12	12"	1	1/Var^	748	8.7	3-Alm	12½" x 12½"
VES161	16"	1	1/Var^	1,034	10.1	3-Alm	16½" x 16½"
VES201	20"	1	1/Var^	941	9.0	3-Alm	20½" x 20½"
VES20	20"	1	1	2,697	8.9	3-Alm	20½" x 20½"
* VES24	24"	1	1	3,849	7.9	3-Alm	24½" x 24½"
VES30	30"	1	1	5,801	11.0	3-Alm	30½" x 30½"
Three Phase							
VES203	20"	3	1/Var^	2,820	10.6	3-Alm	20½" x 20½"
VES243A	24"	3	1/Var^	3,957	8.6	3-Alm	24½" x 24½"
VES303	30"	3	1/Var^	5,749	10.8	3-Alm	30½" x 30½"
* VES303-GS	30"	3	1/Var^	5,767	11.4	3-Alm	30½" x 30½"

* Best sellers/recommended models

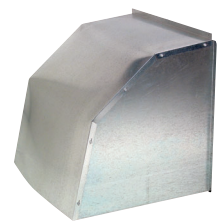
^ Variable speed fans require separate variable speed control to adjust fan speed

Bold red text is data based on testing performed by an accredited lab using ANSI/AMCA Standard 210-07



Optional Weather Hood

Shutter Fan Size	Weather Hood
10"	VFT140855
12"	VFT140855
16"	VFT140856
20"	VFT140857
24"	VFT140858
30"	VFT140859



Weather hood for exterior shutter side of fan

⚠ WARNING: This product can expose you to chemicals including lead, which is known to the State of California to cause cancer and birth defects or other reproductive harm. For more information go to www.P65Warnings.ca.gov/product.