

Square Tube Mounting Brackets & Installation Components for J&D Headlocks & Feed Panels

Features

- For corrosion resistance, most bolt-on brackets are hot dip galvanized after components are welded together
(Note: For corrosion protection, weld-on brackets should be painted after welding.)
- All included assembly bolts are paired with nyloc nuts
(Additional mounting hardware may be needed.)
- Tilt brackets have a 4° tilt for comfort mounting

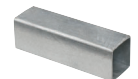
Part#	Description	Hercules Headlocks	Standard Headlocks	Spec. Needs Heavy-Duty	Calif Headlocks	Slant Bar Feed Panels
Outer Mounting Brackets						
HPS116	Bracket, Tilt, Bolt-On 2 7/8" Post, Painted, with Hardware	X	X	X	X	X
HPS118	Bracket, Tilt, Bolt-On 4" Post, Painted, with Hardware	X	X	X	X	X
HPS125	Bracket, Tilt, Weld-On 2 7/8" or 4" Post, HDG, with Hardware	X	X	X	X	X
HPS125F	Bracket, Face, Weld-On 2 7/8" or 4" Post, Painted, with Hardware	X	X	X	X	X
HPS127	Bracket, Tilt, Bolt-On 2 7/8" Post, HDG, with Hardware	X	X	X	X	X
HPS127F	Bracket, Face, Bolt-On, 2 7/8" Post, HDG, with Hardware	X	X	X	X	X
HPS130	Bracket, Tilt, Bolt-On 4" Post, HDG, with Hardware	X	X	X	X	X
HPS130F	Bracket, Face, Bolt-On 4" Post, HDG, with Hardware	X	X	X	X	X
HPS133	Bracket, Tilt, Bolt-On Wood Post, HDG, with Hardware	X	X	X	X	X
HPS133F	Bracket, Face, Bolt-On Wood Post, HDG, with Hardware	X	X	X	X	X
HPS134	Bracket, Tilt, Weld-On to Flat Surface, HDG, with Hardware	X	X	X	X	X
HPS134F	Bracket, Face, Weld-On to Flat Surface, HDG, with Hardware	X	X	X	X	X
Inner Mounting Brackets						
1 3/4" OD Telescoping (not compatible with Hercules and "-HD" Panels)						
HPS100	Bracket, Flush, Telescoping, Bolt-On or Weld-On to Flat, HDG		X		X	X
HPS126	Bracket, Flush, Telescoping, Weld-On 2 7/8" or 4" Post, HDG		X		X	X
HPS128	Bracket, Flush, Telescoping 1 Way, Bolt-On 2 7/8" Post, HDG, w/Hrdwr		X		X	X
HPS129	Bracket, Flush, Telescoping 2 Way, Bolt-On 2 7/8" Post, HDG, w/Hrdwr		X		X	X
HPS131	Bracket, Flush, Telescoping 1 Way, Bolt-On 4" Post, HDG, w/Hrdwr		X		X	X
HPS132	Bracket, Flush, Telescoping 2 Way, Bolt-On 4" Post, HDG, w/Hrdwr		X		X	X
1 1/2" OD Telescoping - for Hercules & "-HD" Panels						
HPS150	Bracket, HD, Flush, Telescoping 1 Way, Bolt-On 2 7/8" Post, HDG, w/Hrdwr	X	X			
HPS151	Bracket, HD, Flush, Telescoping 1 Way, Bolt-On 4" Post, HDG, w/Hrdwr	X	X			
HPS152	Bracket, HD, Flush, Telescoping 2 Way, Bolt-On 2 7/8" Post, HDG, w/Hrdwr	X	X			
HPS153	Bracket, HD, Flush, Telescoping 2 Way, Bolt-On 4" Post, HDG, w/Hrdwr	X	X			
HPS154	Bracket, HD, Flush, Telescoping, Weld-On 2 7/8" or 4" Post, HDG	X	X			
HPS156	Bracket, HD, Flush, Telescoping, Bolt-On or Weld-On to Flat, HDG	X	X			
Additional Installation Components						
HPS103-HD	Ear Guard Assembly, with Hardware, Galvanized	X	X	X	X	
HPS104	Splice Insert, Standard Headlocks & Slant Bar Feed Panels, HDG		X		X	X
HPS105	Splice Insert, Hercules & "-HD" Headlock Panels	X	X			
HPS106	Connector, Control Rod, Weld-On, Zinc Finish	X	X	X	X	
HPS107	Connector, Control Rod, Bolt-On, HDG	X	X	X	X	
HP680	Single Locker, Standard & HD Square Tube Headlocks	X	X	X	X	
HPS110-ADJ	Handle, Control Rod, for Adjustable Panels, Painted	X	X	X	X	
HPS157 ^v	Center Support, Panel, Bolt-On or Weld-On	X	X	X	X	X



HPS103-HD



HPS104



HPS105



HPS106



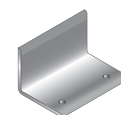
HPS107



HPS110 - ADJ



HP680

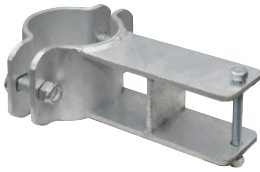


HPS157^v

^vWarranty requires 12' headlocks be installed with a center support

⚠WARNING: This product can expose you to chemicals including lead, which is known to the State of California to cause cancer and birth defects or other reproductive harm. For more information go to www.P65Warnings.ca.gov/product.

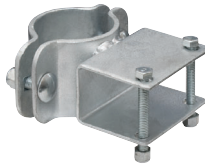
Square Tube Mounting Brackets & Installation Components for J&D Headlocks & Feed Panels



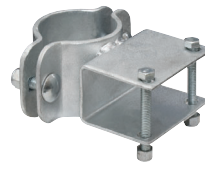
HPS116 (27/8", Tilt)
HPS118 (4", Tilt)



HPS125 (Tilt)
HPS125F (Face)



HPS127 (27/8", Tilt)
HPS130 (4", Tilt)



HPS127F (27/8", Face)
HPS130F (4", Face)



HPS133 (Tilt)
HPS133F (Face)



HPS134 (Tilt)
HPS134F (Face)

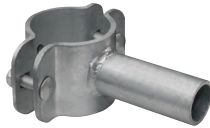
**Includes
assembly
hardware
as shown**



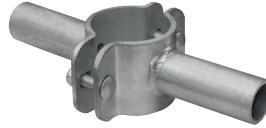
HPS100 (Flush)



HPS126 (Flush)



HPS128 (27/8", Flush)
HPS131 (4", Flush)



HPS129 (27/8", Flush)
HPS132 (4", Flush)

Hercules & -HD Compatible

HPS150 (27/8", Flush)
HPS151 (4", Flush)

HPS152 (27/8", Flush)
HPS153 (4", Flush)

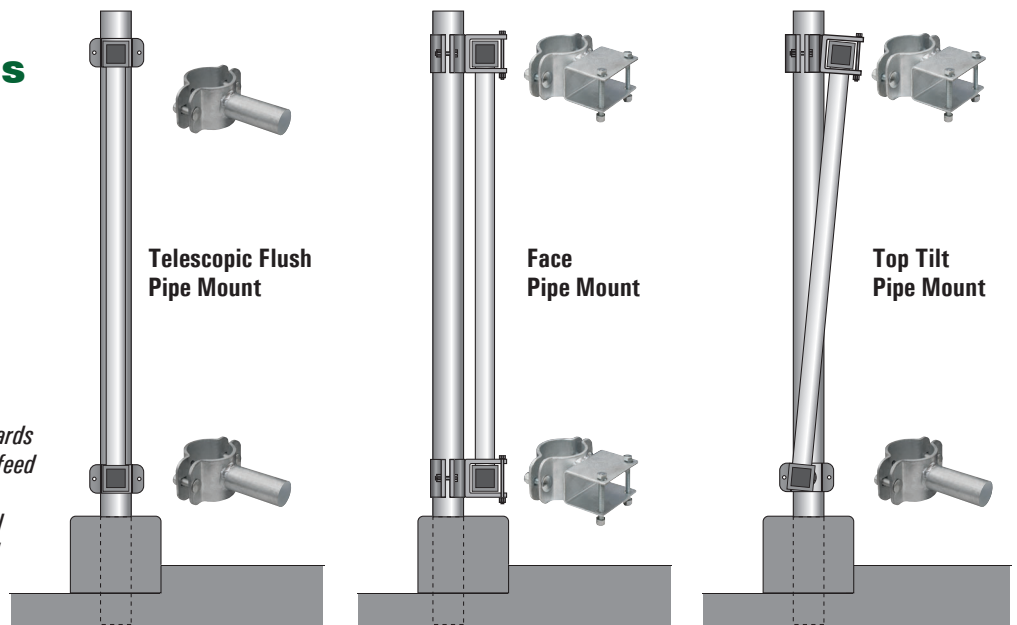
HPS154 (Flush)

HPS156 (Flush)

Mounting Recommendations

Headlocks should be installed with the J&D logo facing the feed aisle.

NOTE: Mounting post may be offset towards cow side to provide clearance for feed handling equipment on face mount applications. Amount of offset will depend on the size of the post and style of mounting bracket.



⚠ WARNING: This product can expose you to chemicals including lead, which is known to the State of California to cause cancer and birth defects or other reproductive harm. For more information go to www.P65Warnings.ca.gov/product.