

## BAFFLE INLET INSTALLATION INSTRUCTIONS UTILIZING STAINLESS ROD AND STAINLESS SUSPENSION CABLES IN FRONT OF BAFFLE

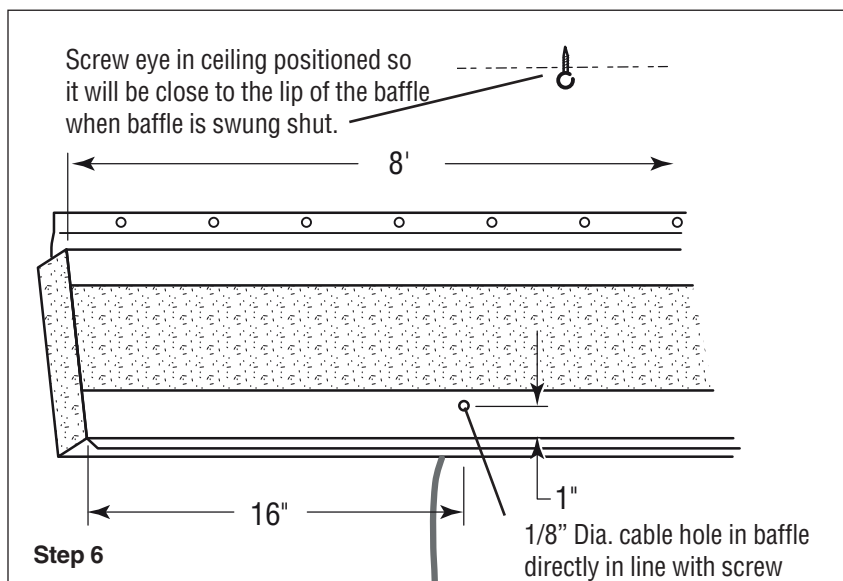
1. Make a chalk line on sidewall 5" down from the ceiling. This line may have to be closer to the ceiling if the ceiling slot width exceeds 5 1/2" for 8" baffle or 9 1/2" for 12" baffle. This will be the match line for the raw edge of the hinge end. **NOTE:** The overall length of hinge may vary slightly from section to section. Therefore, when installing the baffle in step 2, check for alignment of the baffle lip from section to section before securing the baffle hinge to the wall.
2. Remove baffle sections from their carton. **NOTE:** that the styrofoam board is partially exposed on one side. This side will face you when hanging the baffle but will be hidden from view when drawn up. Begin hanging the baffle sections using screws. Nails may be used, but are not recommended when installing in cooler temperatures as hammer blows may crack the PVC hinge material at cooler temperatures. Prepunched holes are provided in the hinge for fastening purposes. **Fastener in each hole!**  
**NOTE:** Leave 1/4" between sections and ends of baffle runs for expansion. When installing at temperatures below 60° F, leave 3/8" gaps between sections. For 4 ft. baffle sections, the expansion gap should be 1/8" for above 60° and 3/16" for below 60°. Where pulleys are used, leave at least 6" from baffle to wall or structure. If baffle stiffener is used, install as you put up 8' sections.

3. After baffle is hung, remove styrofoam from first baffle section and cut 2 ft. off the end of the styrofoam section. Return the large styrofoam to the first baffle section.
4. Slide the styrofoam from the next baffle section 4 ft. into the first baffle section. Repeat this process with each until you get to the next to the last section. This last section will not be connected to the continuous baffle formed by connecting styrofoam. Insert the saved 4 ft. piece in the next to the last baffle section. Install PVC insert at this point if it is being used to cover to exposed styrofoam.

5. Position a screw eye every 32" into starter board or ceiling material beginning as close as possible to 16" from end of the last full 8' baffle section. The purpose of this spacing is to provide enough cable supports to provide a uniform small slot for minimum ventilation. This screw eye should be as close to the lip end of the baffle as possible when the baffle is closed. It should not be so close to the lip end of the baffle that it interferes with closing the baffle. The reason for locating the screw eye close to the lip end is to provide a good pull angle.

To check this screw eye positioning swing the unconnected baffle section up into position to be certain it does not strike the screw eye or the Azuma plastic nuts on SS rods before proceeding with installing screw eyes for the rest of the baffle sections.

6. Drill 3/16" holes in baffle board for suspension cables. Each hole should be 1" from lip side of the baffle in line with each screw eye. If the hole is drilled as little as 1/2 inch to the left or to the right of the screw eye, closing leverage and uniformity of the slot will be affected. With the baffle in the fully opened position, slip 1/16" suspension cable through each hole in the baffle board. The cable should be passed through the hole in the baffle so the cable stop button is on the side of the baffle which has exposed styrofoam.
7. String the main rod through the screw eyes, using two people to prevent kinks in continuous rod. With the rod positioned where it will be when the baffle is fully opened, use tape to secure the rod to a screw eye to keep it from moving during the next steps.
8. It is not necessary to use weights at the end of baffle runs when rod is utilized. For each baffle run an 1/8" cable must be



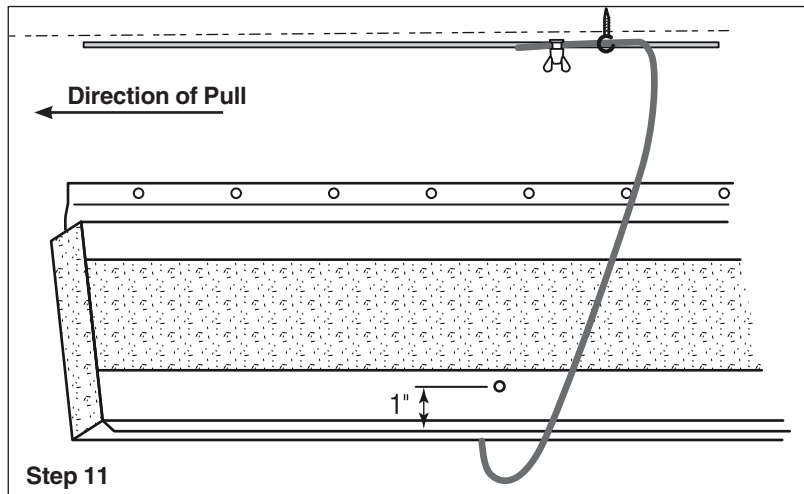
**J&D Manufacturing, Inc.**  
6200 Highway 12 • Eau Claire, WI 54701  
ph: 715-834-1439 • fax: 715-834-3812  
Toll Free: 1-800-998-2398 • Toll Free fax: 1-888-972-4454

On-Line  
website: [www.jdmfg.com](http://www.jdmfg.com)  
e-mail: [jdmfg@jdmfg.com](mailto:jdmfg@jdmfg.com)

fastened to the rod closest to the actuator or winch. A heavy duty single pulley Pruden PFBHDP-1 should be lagged to the ceiling to turn the cable direction toward the winch or actuator. If the PFBHDP-1 Pulley is to fasten to the wall, construct wood or metal framing to position pulley out from wall in line with the rod. Take care to be certain of the following: **a)** The pulley lag screws penetrate structural material sufficient to bear the load. **b)** The location of the pulley provides a direct in line pull with the rod. If it is off line, the rod section will drag against the closest screw eye causing drag and loosening of the screw eye.

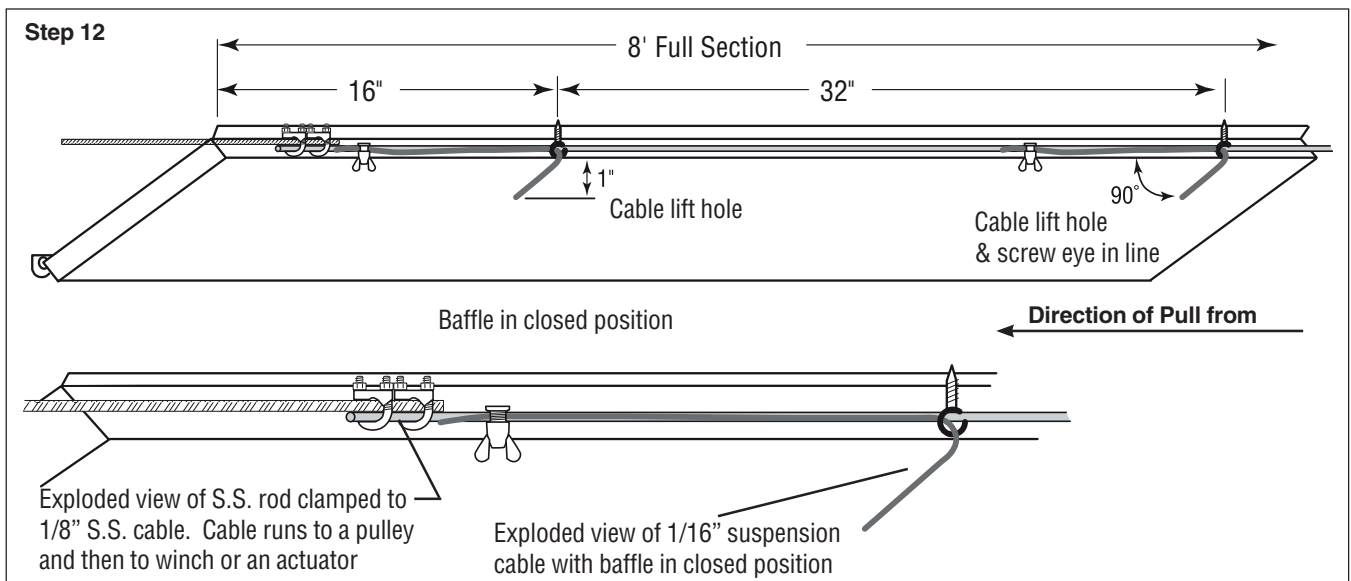
9. Utilizing baffle salvage, plywood or optional Pruden PFSES8B or PFSES12B, install an end stop at both ends of each baffle run.

10. Using a sufficient amount of cable to to secure to the winch or actuator, secure end of the 1/8" cable to the rod or turnbuckle with two clamps. Secure cable to winch or actuator using PFBHDP-1 heavy duty pulleys to make turns. Pulleys should be positioned so that no drag results from being off line. If a linear actuator is used, be certain that the cable does not pull the actuator extender tube off line. The pulleys and/or actuator should be positioned to prevent off line drag. If more than one run of baffle will be operated by the same winch or actuator, use a turnbuckle for each baffle run. Using cable clamps, place the turnbuckle between the winch/actuator and pulley. This will provide for convenient baffle run adjustment Remove tape used in step 7.



11. Working from one end of the hanging baffle to the other, perform the following: **a)** pass loose end of cable through nearest screw eye along side the rod and heading towards the winch or actuator. Secure the cable to the rod with the blue azuma nut and bolt. The nut and bolt should be located near the end of the cable with slack removed but not so taut that it begins lifting the baffle.

12. When all the cables are secured, if actuator is used, adjust all lift cables so baffle is closed when *actuator is in closed position only!* Adjust suspension cables by loosening and retightening the blue Azuma nuts and bolts as needed to provide a uniform opening when the baffle is nearly closed. Open and close the baffle a few times and make any further cable adjustments to achieve a uniform air slot. If more than one run of baffle is involved, adjust the turnbuckles as needed to get even slots between baffle runs. After all cables are adjusted, open and close baffle with actuator several times and check for slack in the cables.



**J&D Manufacturing, Inc.**  
 6200 Highway 12 • Eau Claire, WI 54701  
 ph: 715-834-1439 • fax: 715-834-3812  
 Toll Free: 1-800-998-2398 • Toll Free fax: 1-888-972-4454

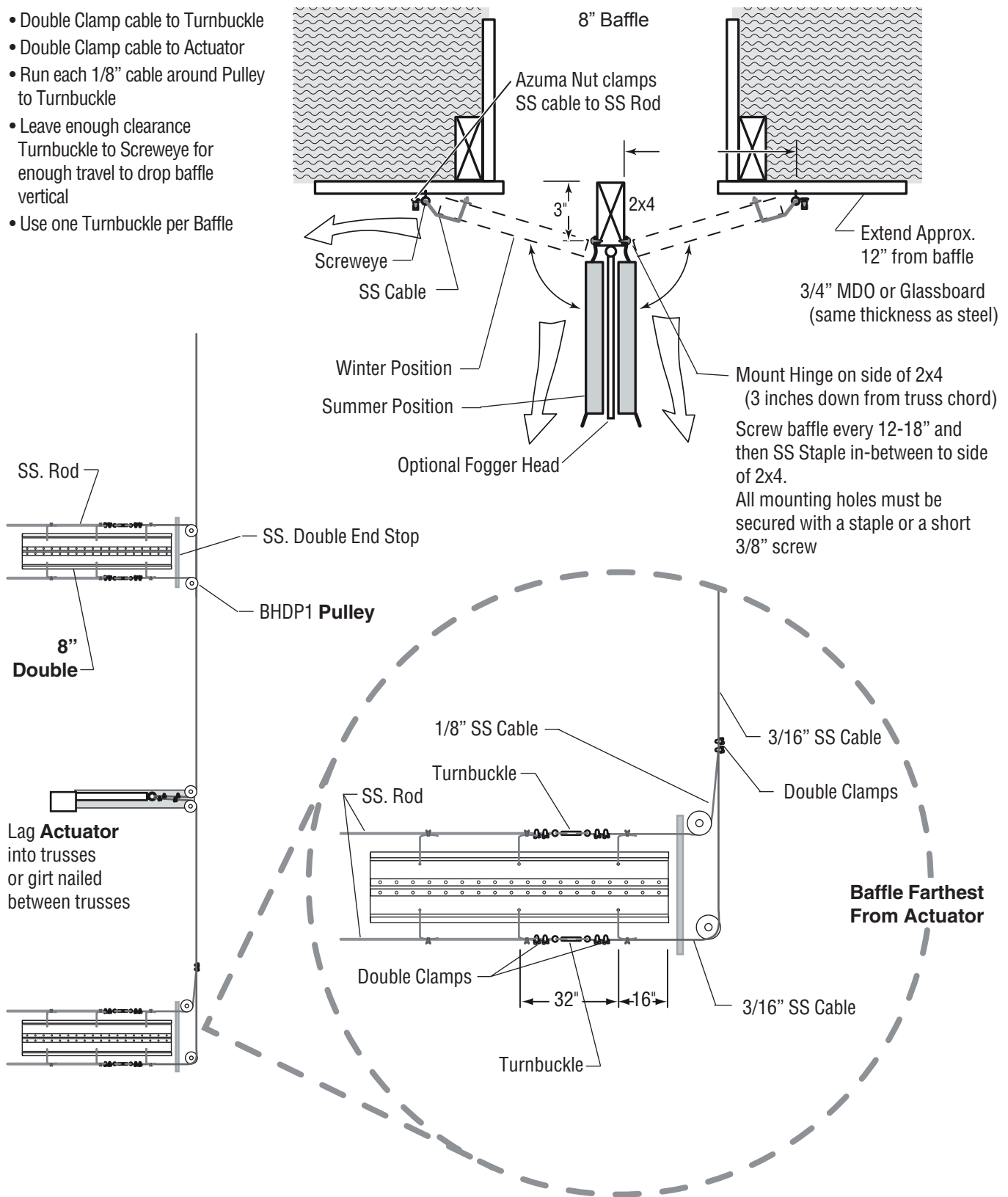
On-Line  
 website: [www.jdmfg.com](http://www.jdmfg.com)  
 e-mail: [jdmfg@jdmfg.com](mailto:jdmfg@jdmfg.com)

# Installation Details

IS146-17H

- Double Clamp cable to Turnbuckle
- Double Clamp cable to Actuator
- Run each 1/8" cable around Pulley to Turnbuckle
- Leave enough clearance Turnbuckle to Screweye for enough travel to drop baffle vertical
- Use one Turnbuckle per Baffle

## Pruden Double Baffle System



**J&D Manufacturing, Inc.**  
 6200 Highway 12 • Eau Claire, WI 54701  
 ph: 715-834-1439 • fax: 715-834-3812  
 Toll Free: 1-800-998-2398 • Toll Free fax: 1-888-972-4454

On-Line  
 website: [www.jdmfg.com](http://www.jdmfg.com)  
 e-mail: [jdmfg@jdmfg.com](mailto:jdmfg@jdmfg.com)