

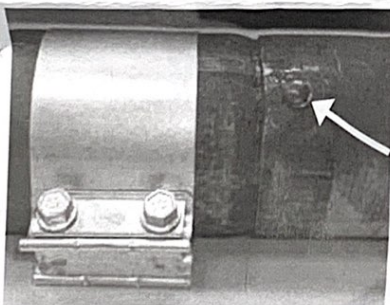
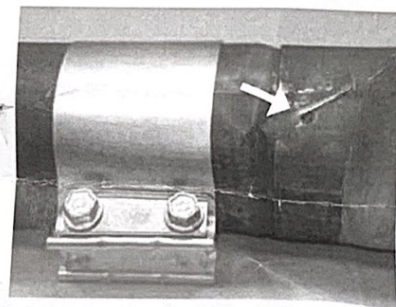
JA-0516-RK - 175/200 Tube Separation Repair Kit

TOOLS REQUIRED

- 9/16" Wrench or Socket
- 1/4" Drill Bit
- Electric Drill

INSTALLATION

1. Remove bolts from existing tube coupler located at joint in first to second tube
2. Remove coupler from tubes
3. Drill a 1/4" diameter hole through both tubes – locate the center of the hole 3/4" from end of second tube



4. Insert the supplied 1/4" rivet into the hole

5. Remove bolts and 'reaction block' from new coupler and slide coupler into position – half onto each tube – covering the rivet head
6. Reassemble 'reaction block' and bolts, and tighten bolts to 40 ft-lb

