



Installation Instructions for Elite Premier Low Water Cut Off (LWCO)

Part # 7450P-904

STOP! Follow these instructions or warranty will be void!

This installation shall be done by a qualified service agency in accordance with these instructions, all applicable codes, and requirements of the authority having jurisdiction. Failure to follow these instructions could result in substantial property damage, severe personal injury, or death.

Installation Must Comply With:

1. National Electrical Code
2. In Canada, CSA C22.1 Canadian Electrical Code Part 1, and CGA No. B149 (latest version)
3. Local, state, provincial, and national codes, laws, regulations, and ordinances.

Included with Kit:

- One (1) Low Water Cut Off (LWCO) Probe
- One (1) Wire Harness
- One (1) Screw
- Instructions

Tools Required (Not Included):

- Crescent or Pipe Wrench
- Teflon Pipe Tape
- Phillips Head Screwdriver

Preparing for Installation:

1. Turn off power to the boiler. See Figure 1.
2. Valve off and drain the boiler of water.

Do not proceed with the installation if the boiler remains powered or filled with water. Water drained from the boiler may be scalding hot. Take precautions to avoid scalding when draining the boiler. Wait until the boiler has had sufficient time to cool before proceeding with installation. Failure to follow these instructions could result in substantial property damage, serious personal injury, or death.

3. Use a Crescent or Pipe Wrench to remove the brass plug from the outlet combination fitting. See Figure 2.

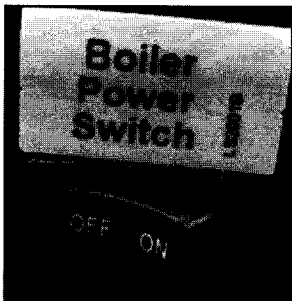


Figure 1 - Boiler Power Switch

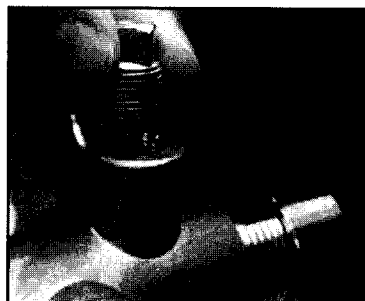


Figure 2 - Removing the Brass Plug

Installing the Low Water Cut Off (LWCO) Probe:

1. Use a Crescent or Pipe Wrench and thread tape to install the LWCO probe into the combination outlet fitting on the boiler. See Figure 3.
2. Locate the LWCO jumper. See Figure 4.
3. Remove the jumper to expose the two prong connector. See Figure 5.
4. Plug the two pronged end of the wire harness into the open two prong connector on the boiler. See Figure 6.



Figure 3 - Installed Low Water Cut Off (LWCO) Probe

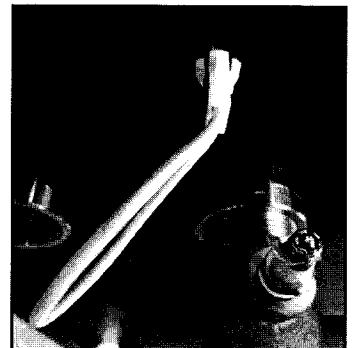


Figure 4 - LWCO Jumper



Figure 5 - Exposed Two Prong Connector

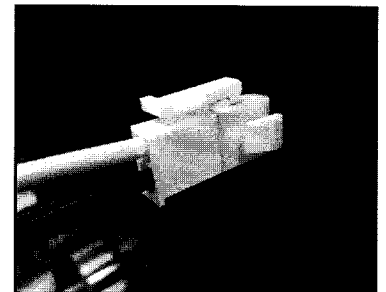


Figure 6 - Wire Harness Plugged into the Boiler

5. Attach the spade connector from the wire harness to the LWCO probe. Use a Phillips Head screwdriver and the included screw to attach the grounding wire to the combination outlet fitting. See Figure 7.

Restarting the Boiler and Testing LWCO:

1. Refill the boiler with water and purge the system of air.
2. Restore power to the boiler.

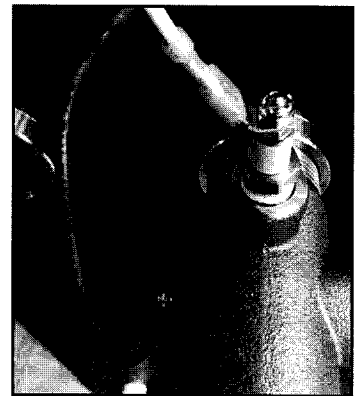


Figure 7 - Installed LWCO

Do not proceed if the boiler is not powered or filled with water. Failure to follow these instructions could result in substantial property damage, serious personal injury, or death.

3. No changes need to be made to the boiler control programming. The boiler is factory programmed and ready to accept the LWCO.
4. To test the LWCO, press and hold the **▼** and **RESET** keys at the same time for five seconds. The boiler will display an F21 or F22 error code. Press the **RESET** key to clear the error code, and return the boiler to normal operation.
5. Observe boiler operation for 15 minutes to ensure proper operation. Use the boiler installation manual to troubleshoot any error codes that occur.
6. If satisfied with boiler operation, the installation is complete.