

WALL MOUNTING INSTRUCTIONS FOR ELITE, ELITE VWH, AND ELITE PLUS BOILERS (Part # 7450P-211)

STOP! Follow these instructions or warranty will be void!

INSTALLATION MUST COMPLY WITH:

Local, state, provincial, and national codes, laws, regulations and ordinances.

INCLUDED IN KIT

The kit includes the following:

QUANTITY	DESCRIPTION
2	BOILER BRACKETS
2	WALL BRACKETS
4	10-32 X 1/2" ZINC SCREWS (2 SPARE)

Table 1

Instructions (this document) are included with each kit.

⚠ WARNING

This wall mounting kit is not seismically rated and should not be applied as such. Doing so could result in substantial property damage, severe personal injury, or death.

⚠ DANGER

This installation shall be done by a qualified service agency in accordance with these instructions, all applicable codes, and requirements of the authority having jurisdiction. Failure to follow these instructions will result in substantial property damage, severe personal injury, or death.

TOOLS AND PARTS REQUIRED (NOT INCLUDED)

- Drill with Assorted Bits (For Installation on Wood or Metal Frame)
- ~~1/2" X 2 1/2" Lag Screws (Minimum)~~
- Steel or Stainless Steel 1/2" Lag Screw with Minimum 2 1/2" embed (Quantity 4 [four] Minimum) (For Installation in Wood)
- 1/2" Washers of the same material of the screws used in the installation
- Steel or Stainless Steel 3/16" Toggle Bolts with Minimum 2" length (Quantity 4 [four] Minimum) (For Installation in Metal Frame)
- Phillips Head bit
- Socket wrench and sockets of various sizes
- A pencil, pen, or other marking tool
- Small level (preferably magnetic)

NOTE: The proper installation of this kit may require two or more installers.

PRECAUTIONS

⚠ WARNING

Before installing the boiler, ensure the installation location offers support and access to the supply and return piping, gas supply, electrical service, and venting. The boiler must be mounted on building frame (studs) 12", 16", or 24", center on center. The mounting location must also be vertically level. Failure to follow this warning could result in property damage, serious personal injury, or death.

NOTE: It is recommended to perform this installation BEFORE the boiler is fully piped, powered, and operating. If the boiler IS fully installed and operational, follow the warning statements below before continuing.

⚠ DANGER

Turn off all electrical power to the boiler, both at the boiler and at the circuit breaker, and disconnect the boiler from the main electrical supply. Disconnect all wiring from the boiler. DO NOT proceed with installation if the boiler remains powered. Failure to follow this warning will result in property damage, serious personal injury, or death due to electrical shock.

⚠ DANGER

Ensure gas is shut off to the boiler and disconnected BEFORE proceeding with installation. Failure to follow this warning will result in property damage, serious personal injury, or death.

⚠ WARNING

Disconnect boiler from vent system. Failure to follow this warning could result in property damage, serious personal injury, or death.

⚠ WARNING

If boiler is installed, valve off the water supply to the boiler. Drain all water from the boiler. Disconnect from the system. Failure to follow this warning could result in property damage, serious personal injury, or death.

⚠ WARNING

Wait until boiler has had sufficient time to cool before proceeding with the installation. Failure to follow this warning could result in property damage, serious personal injury, or death.

WALL BRACKET INSTALLATION INSTRUCTIONS

The brackets included in this kit are heavy. Be careful when lifting brackets, and take precautions when storing brackets prior to installation. Failure to follow this warning could result in property damage, serious personal injury, or death.

WOODEN FRAME (STUD) MOUNTING

The provided wall brackets must be mounted to the center of a minimum of two (2) studs per bracket using standard steel or stainless steel 1/4" X 2 1/2" lag screws. 2 1/2" is the minimum lag bolt length if the bracket is installed directly on the stud. Increase the bolt length to account for any additional materials covering the stud.

1. Begin with the top bracket. Ensure the bracket is level, then mark the predrill hole locations for the top bracket height and horizontal stud location. See Figure 1.
2. Continue to the bottom bracket. Ensure the predrill hole locations for the bottom bracket are the appropriate distance from and directly below the top bracket for the given model. See Figure 1. Ensure that the four (or more) marked holes are located in the center of the building frame (studs).
3. Predrill holes on the marked stud locations. The predrilled holes should be 3/16" X 2" deep for bare studs. Increase the length to account for any additional materials covering the stud. Ensure that the predrilled holes are straight and square to the wall. Failure to do so could lead to insufficient support or an out of level boiler.

4. Use standard or stainless steel lag screws to mount the wall brackets to the predrilled holes in the building frame (studs). Tighten the lag screws until the wall brackets are secure.

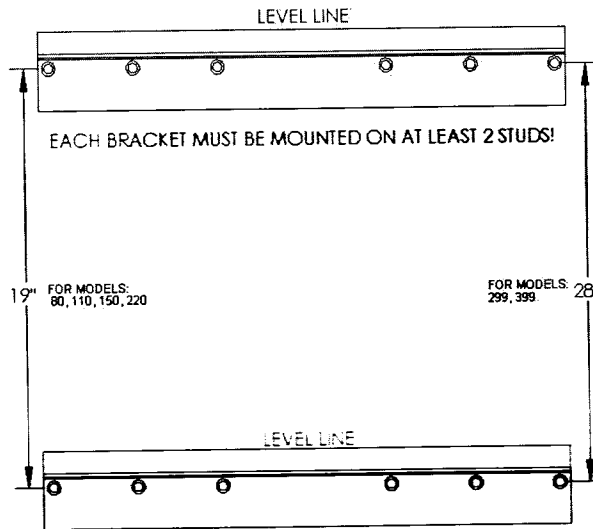


Figure 1: Wall Bracket Dimensions

METAL FRAME (STUD) MOUNTING

The provided wall brackets must be mounted to the center of a minimum of two (2) studs per bracket using standard or stainless steel toggle bolts 3/16" in diameter or larger and at least 2" long for direct mounting on stud. Increase the bolt length to account for any additional materials covering the stud. See Figure 2 for visual reference of toggle bolt.

1. Begin with the top bracket. Ensure the bracket is level, then mark the predrill hole locations for the top bracket height and horizontal stud location. See Figure 1.
2. Continue to the bottom bracket. Ensure the predrill hole locations for the bottom bracket are the appropriate distance from and directly below the top bracket for the given model. See Figure 1. Ensure that the four (or more) marked holes are located in the center of the building frame (studs).
3. Predrill holes on the marked stud locations. The predrilled holes should be 1/2" in diameter to allow for the collapsed wings of the toggle bolt to slide through. Ensure that the predrilled holes are straight and square to the wall. Failure to do so could lead to insufficient support or an out of level boiler.
4. Use the toggle bolts to mount the wall brackets to the predrilled holes in the building frame (studs). Ensure that the bolt toggles are through the stud and expanded, catching the inside of the stud. Tighten the toggle bolt until the wall brackets are secure.

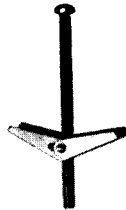


Figure 2: Toggle Bolt Image
(for visual reference only)

BOILER BRACKET INSTALLATION INSTRUCTIONS

1. Remove the six (6) silver screws from each corner of the top rear of the boiler.

NOTE: DO NOT LOSE the six (6) screws. Additional screws ARE NOT provided in this kit.

2. Mount the top boiler bracket in the location shown with the screws that have been removed. See Figure 3. Ensure the bracket is secure and level on both sides.

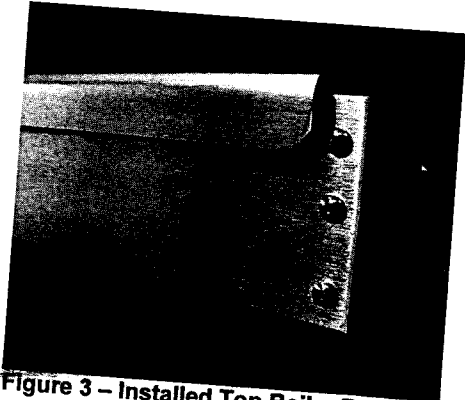


Figure 3 – Installed Top Boiler Bracket



Figure 4 – Lower Corner of Elite Boiler Cabinet

Replace this Screw with Included Stainless 10-32 Screw

3. Remove the one (1) silver screw and one (1) black screw directly above it from both corners of the bottom of the boiler. The black screws are no longer needed in this installation.

NOTE: Your boiler may already have two (2) silver screws installed in each bottom corner of the boiler. These screws are to be removed before mounting the bottom boiler bracket, and may be reused in this installation.

Mount the bottom boiler bracket to the boiler using the two (2) removed silver screws and at least two (2) of the included 10-32 stainless steel screws. Two spare screws have been provided. Ensure the boiler bracket clears the existing bottom screw on the boiler cabinet (as shown in Figure 5).

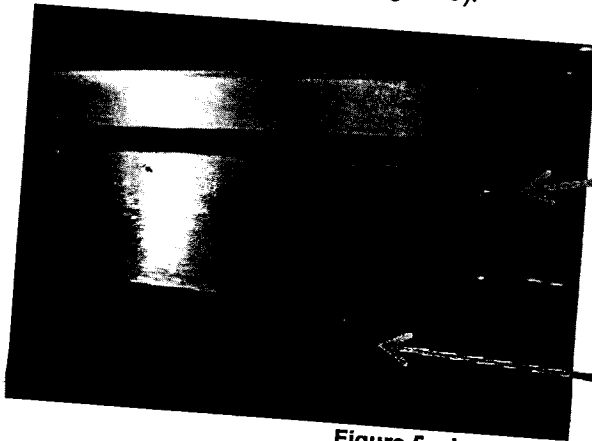


Figure 5 – Installed Bottom Boiler Bracket

Black Screw Replaced with Included Stainless 10-32 Screw

Mount Bracket to Clear Lower Screw

4. The boiler is now ready to install on the wall brackets. See Figure 6.

MOUNTING THE BOILER

1. Hang the boiler on the wall mounted brackets. Ensure both brackets are engaged before letting the boiler hang freely. Slowly release the weight of the boiler while ensuring that the brackets are properly secure.

WARNING

The boiler is very heavy and awkward to lift. It is recommended to install the boiler with two people. Take precautions when lifting boiler to installation location. Verify that the boiler is securely mounted to the building frame (studs) before leaving the boiler unattended. Failure to follow this warning could result in property damage, serious personal injury, or death.

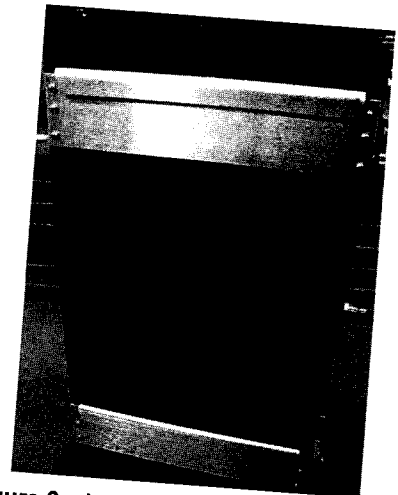


Figure 6 – Installed Boiler Brackets

2. Ensure the boiler is level BEFORE completing boiler installation.

AFTER INSTALLATION

1. Install (or reinstall) boiler gas piping, electrical wiring, venting, and water system piping as described in the boiler installation manual.

2. Follow all installation and startup procedures listed in boiler installation manual before restoring gas, water, and electrical power to the boiler.

⚠ DANGER

Failure to follow the boiler installation instructions will result in property damage, serious personal injury, or death.

⚠ WARNING

WHAT TO DO IF YOU SMELL GAS

- Do not try to light any boiler.
 - Do not touch any electric switch; do not use any phone in your building.
 - Immediately call your gas supplier from a neighbor's phone. Follow the gas suppliers' instructions.
 - If you cannot reach your gas supplier, call the fire department.
 - Turn off gas shutoff valve (located outside of the boiler) so that the handle is crosswise to the gas pipe. If the handle will not turn by hand, don't try to force or repair it, call a qualified service technician. Force or attempted repair may result in a fire or explosion.
1. Do not use this boiler if any part has been under water. Immediately call a qualified service technician to inspect the boiler and to replace any part of the control system and any gas control that has been damaged.
2. The boiler shall be installed so the gas ignition system components are protected from water (dripping, spraying, rain, etc.) during boiler operation and service (circulator replacement, condensate trap, control replacement, etc.)

Failure to follow these instructions could result in property damage, serious personal injury, or death.