

UNIVERSAL CONDENSATE HOSE REPAIR KIT

INSTRUCTIONS FOR MUNCHKIN

80M, 140M, 199M, AND 399M BOILERS

(Part # 7250P-724)

STOP! Follow these instructions or warranty will be void!

INSTALLATION MUST COMPLY WITH:

1. The National Fuel Gas Code, ANSI Z223.1/NFPA 54, CAN/CGA B149.
2. Local, state, provincial, and national codes, laws, regulations and ordinances.

⚠ DANGER

Failure to follow all instructions can result in flue gas spillage and carbon monoxide emissions, causing severe personal injury or death.

INCLUDED IN KIT

The kit includes the following:

QUANTITY	DESCRIPTION
1	HOSE ASSEMBLY
1	NIPPLE ADAPTER (RED TUBE)
1	#68 CLAMP
4	MOUNTING SCREWS

Table 1

⚠ DANGER

This installation shall be done by a qualified service agency in accordance with these instructions, all applicable codes, and requirements of the authority having jurisdiction. Failure to follow these instructions will result in substantial property damage, severe personal injury, or death.

TOOLS REQUIRED (NOT INCLUDED)

- Phillips Head screwdriver
- Pliers

NOTE: This universal condensate hose repair kit is applicable to boilers with strapped manifolds as well as welded manifolds. Please refer to Figures 1 and 2 to determine your boiler's manifold type.

INSTALLATION INSTRUCTIONS

1. Turn off all electrical power and gas to the boiler.

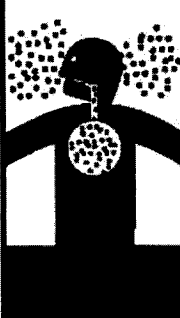
120 Braley Rd. P.O. Box 429

East Freetown, MA 02717-0429

www.htproducts.com

LP- 149 REV. 3.20.12

Breathing Hazard - Carbon Monoxide Gas



- Do not operate heater if flood damaged.
- Install vent system in accordance with local codes and manufacturers installation instructions.
- Do not obstruct heater air intake or exhaust. Support all vent piping per manufacturers installation instructions.
- Do not place chemical vapor emitting products near unit.
- According to NFPA 720, carbon monoxide detectors should be installed outside each sleeping area.
- Never operate the heater unless it is vented to the outdoors.
- Analyze the entire vent system to make sure that condensate will not become trapped in a section of vent pipe and therefore reduce the open cross sectional area of the vent.

Breathing carbon monoxide gas cause brain damage or death.
Always read and understand instruction manual.

LP-304 4/28/09

⚠ DANGER

DO NOT proceed with installation if the boiler remains powered or connected to the gas supply. Failure to follow this warning will result in property damage, serious personal injury, or death.

⚠ WARNING

Wait until boiler has had sufficient time to cool before proceeding with the installation. Failure to follow this warning could result in property damage, serious personal injury, or death.

2. Remove the old condensate hose from the boiler.

3. If you have a boiler with strapped manifolds (as shown in Figure 2), you will need to use the red nipple adapter supplied with this kit. Push the adapter over the nipple on the bottom of the boiler until it is up against the heat exchanger and the bottom of the nipple is flush with the edge of the adapter.

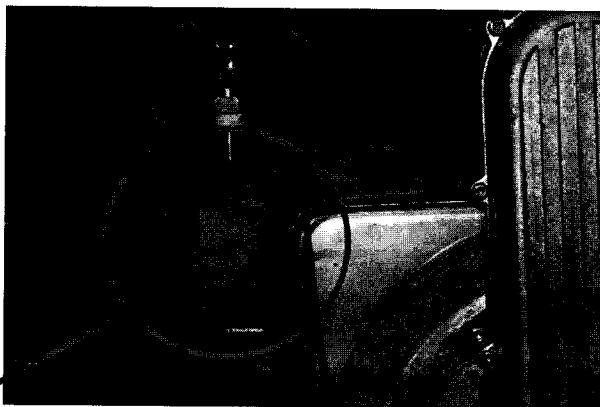


Figure 1 – Boiler with Welded Manifolds

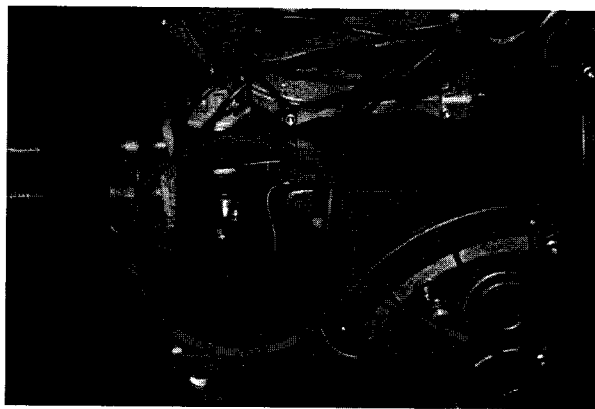


Figure 2 – Boiler with Strapped Manifolds

4. Push the new condensate hose over the bushing installed in Step 3, or directly on the nipple if the boiler has welded manifolds (as shown in Figure 1). The hose should fit snug on the nipple. If the hose is loose on the nipple, please refer to Step 3 and use the supplied red adapter.

5. Put the clamp over the condensate hose assembly and slide it in place over the nipple. Squeeze with a pair of pliers until it is secure.

6. Use the mounting screws to mount the outlet end of the hose to the side of the boiler as shown in Figure 6.

NOTE: Use the previous screw holes as guide holes to install the hose outlet.

⚠ WARNING

Failure to install the condensate hose outlet in the proper location could result in serious personal injury or death.

⚠ DANGER

The condensate hose assembly **MUST BE PROPERLY INSTALLED** according to these instructions when operating the boiler. Operating the boiler without the condensate hose assembly will cause flue gases to leak and result in serious personal injury or death.



Figure 3 – Mounting the Adapter

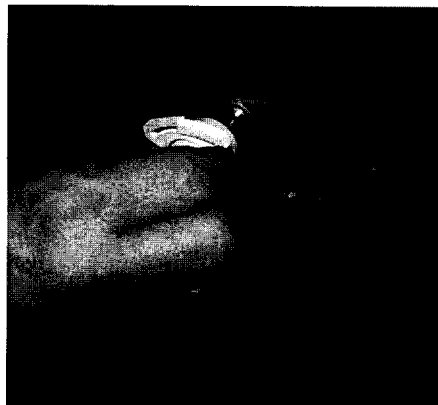
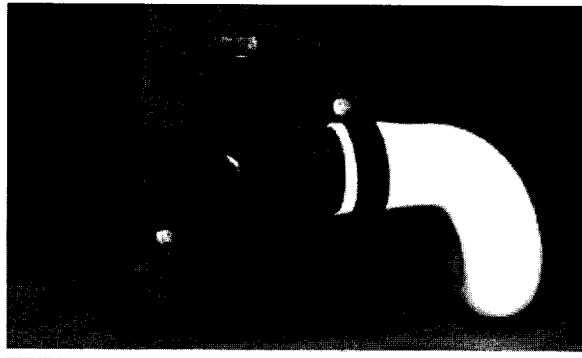


Figure 4 – Installing the Hose and Clamp



Figure 5 – Installed Hose



80M/140M/199M/399M
Figure 6 - Mounted Hose Outlet – 80/140/199/399M

RESTARTING THE BOILER

1. Restore electrical power and gas to the boiler.

⚠ WARNING

IF YOU SMELL GAS:

- Do not try to light any appliance.
- Do not touch any electrical switch.
- Do not use any phone in your building.
- Immediately call your gas supplier from a neighbor's phone.
- Follow gas supplier's instructions.
- If you cannot reach your gas supplier, call the fire department.
- Installation and service must be performed by a qualified installer, service agency, or the gas supplier.

2. Turn the boiler on.

3. Observe boiler operation for 15 minutes. Ensure that the boiler is operating properly and there are no condensate leaks. Repair leaks as necessary.

⚠ WARNING

Failure to check for leaks could result in serious personal injury or death.