

Direct Fired Combustion Blower Replacement Instructions

Part # 7100P-015, 7100P-350

STOP! Follow these instructions or warranty will be void!

NOTICE

The physical appearance of the included blower may differ from that of the blower installed on the unit. Regardless of appearance, the functionality of the replacement blower is identical to that installed on the unit. Depending on the blower model, there may be adaptor terminal connections that are no longer needed on the replacement blower. Remove and discard these connections as instructed.

WARNING

These instructions include information specific to direct fired appliances, and are not applicable to any other appliance.

This installation shall be done by a qualified service agency in accordance with these instructions, all applicable codes, and requirements of the authority having jurisdiction.

Do not proceed if the water heater is powered. Wait until the water heater has had sufficient time to cool before proceeding with installation.

Failure to follow these instructions could result in substantial property damage, severe personal injury, or death.

Included with Kit:

- Replacement Blower, Sight Glass, Gaskets, and Dungs Gas Valve Mounting Kit
- Instructions

Tools Required (Not Included):

- Pipe Wrenches
- Phillips Head and Flat Head Screwdrivers of Various Sizes
- 7/16" Standard Wrench



Figure 1 - Blower Installed August 2010 - April 2017

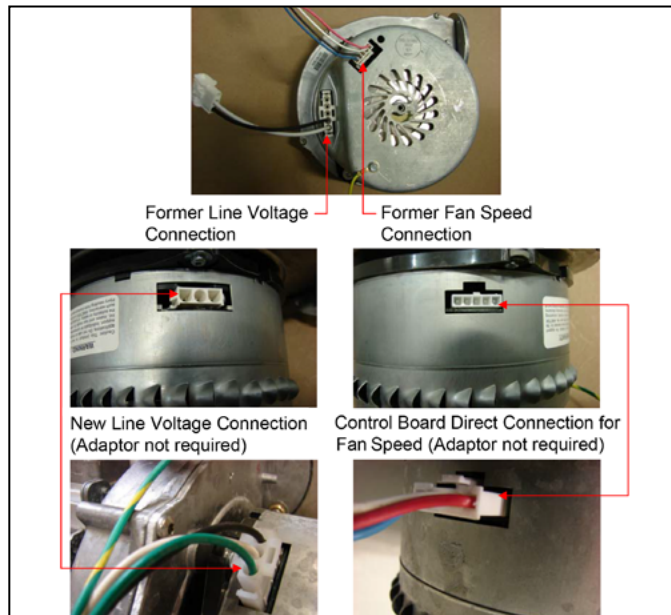


Figure 2 - Blower Installed Prior to August 2010

Removing the Blower Assembly

Step #1 - Turn off all power to the appliance. Turn gas off to the appliance at a shut-off located outside the unit. If the appliance has been operating, wait for it to cool before proceeding with installation.

WARNING

Failure to ensure the gas and power has been turned off and the appliance has had time to cool before proceeding could result in substantial property damage, severe personal injury, or death.

Step #2 - Open the appliance cabinet to expose the appliance combustion assembly. See Figure 3.

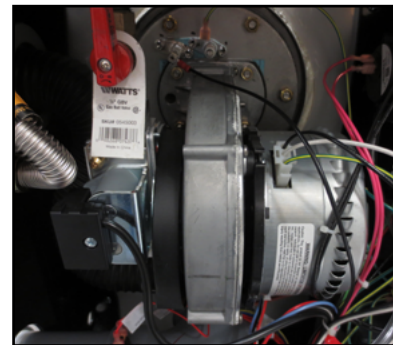


Figure 3 - Combustion Assembly

Step #3 - Unplug all wires and cables from the blower, including the spark igniter and flame rectification probe. Disconnect the blower ground wire from the control board assembly. See Figure 4.



Figure 4 - Blower with Wires Removed

Step #4 - Use two pipe wrenches to disconnect the appliance gas flex line from the combustion assembly. See Figure 5.

CAUTION

Use two pipe wrenches when disconnecting the appliance gas piping. Use one wrench to prevent the combustion assembly from turning. Failure to prevent connections from turning could cause damage to appliance components.

NOTICE

The manufacturer reserves the right to make changes or updates without notice and will not be held liable for errors in literature.

NOTE TO CONSUMER: PLEASE KEEP ALL INSTRUCTIONS FOR FUTURE REFERENCE.



Figure 5 - Disconnected Gas Line

Step #5 - Disconnect the air intake flex hose from the combustion assembly. This can be done by hand. See Figure 6.

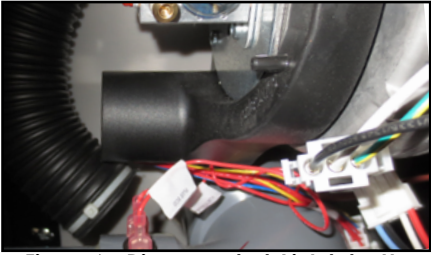


Figure 6 - Disconnected Air Intake Hose

Step #6 - Use a 7/16" wrench to remove the four (4) nuts connecting the combustion assembly to the combustion chamber. See Figure 4.

NOTE: DO NOT lose these four (4) nuts and washers. These will be reused. Replacements are not included in this kit.

Step #7 - Remove the combustion assembly. Ensure the gasket between the combustion assembly and the combustion chamber is on the burner plate. See Figure 7.

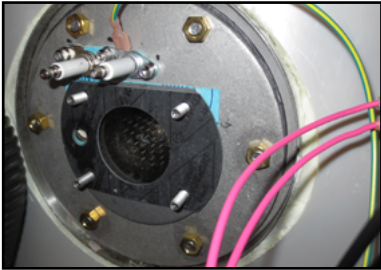


Figure 7 - Exposed Combustion Chamber

Step #8 - Use a Phillips Head screwdriver to remove the three (3) screws attaching the gas valve / air inlet adapter to the combustion assembly. See Figure 8.

NOTE: DO NOT lose these three (3) screws or the gas valve / air inlet adapter. These will be reused. Replacements are not included in this kit.

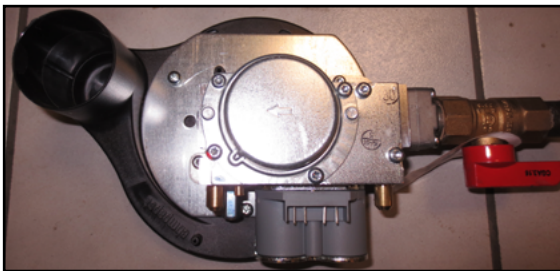


Figure 8 - Combustion Assembly

Step #9 - Use a Phillips Head screwdriver to remove the two (2) screws attaching the adapter plate to the blower. See Figure 9.

NOTE: DO NOT lose these two (2) screws or the adapter plate. These will be reused. Replacements are not included in this kit.

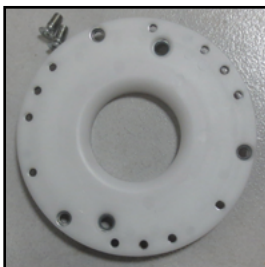


Figure 9 - Removed Adapter Plate

Installing the Replacement Blower Assembly

Step #1 - Use a Phillips Head screwdriver and the two (2) removed screws to install the adapter plate to the replacement blower. Do not over-tighten the screws. See Figure 10.

NOTICE

Take care not to over-tighten the screws. Over-tightening could strip the threads on the blower, increasing blower replacement time and cost.



Figure 10 - Installed Adapter Plate

Step #2 - Use a Phillips Head screwdriver and the three (3) removed screws to install the gas valve / air inlet adapter to the blower assembly. See Figure 8.

Step #3 - Use a 7/16" wrench and the four (4) removed nuts to reinstall the combustion assembly to the combustion chamber. See Figure 14.

Step #4 - Reconnect the air inlet flex hose to the combustion assembly. This can be completed by hand.

Step #5 - Use two pipe wrenches to reconnect the appliance gas flex line to the combustion assembly.

CAUTION

Use two pipe wrenches when installing the appliance gas piping. Use one wrench to prevent the combustion assembly fitting from turning. Failure to prevent connections from turning could cause damage to appliance components.

Step #6 - Plug in all the removed wires and cables, including the spark igniter and flame rectification probe, and blower wire harnesses. Plug the blower ground wire into the control board assembly. See Figure 3.

NOTE: In proper installations, the blower harnesses will connect to the bottom of the blower. See Figure 3.

Restarting the Appliance

Step #1 - Turn the gas on to the appliance at the shut-off located outside the unit. Check the flex pipe union for leaks with a soapy solution. Repair any leaks before proceeding.

Step #2 - Restore power to the appliance.

Step #3 - Turn on the appliance and initiate a call for heat. It may be necessary to open a hot water faucet in the system.

WARNING

WHAT TO DO IF YOU SMELL GAS

- Do not try to light any appliance.
- Do not touch any electrical switch.
- Do not use any phone in your building.
- Immediately call your gas supplier from a neighbor's phone. Follow the gas supplier's instructions.

If you cannot reach your gas supplier, call the fire department. Installation and service must be provided by a qualified installer, service agency, or the gas supplier.

Step #4 - Observe appliance operation for fifteen minutes. Ensure the appliance is meeting the demand for heat.