



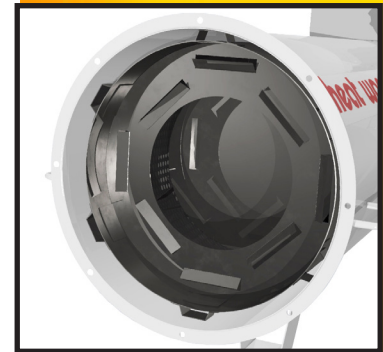
**NEW!**  
**FOR**  
**2022**

**Model 750NEF**

# Non-Exposed Flame Heater

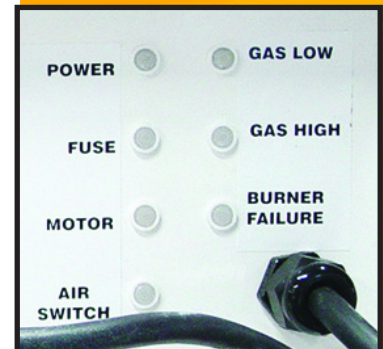


- NEF Arrester System allows for a Direct Fired Heater without a visible flame
- Dual-fuel quick change over from propane to natural gas
- Remote (50' long) thermostat with Hi/Lo/Off control
- Self-diagnostic troubleshooting lights



**Non-Exposed  
Flame Arrester System**

SPECIFICATIONS	
Input	750,000 - 450,000 BTU/Hr
Fuel	Vapor Propane/Natural Gas
Gas Consumption	8.24 GPH Propane/750 CFH NG
Gas Connection	1-1/4" FNPT
Electrical	120 Volts 15 amp circuit
Fan	5000 CFM, 1-1/2 HP, 1" W.C. SP
Duct (optional)	WD2425HT
Thermostat	2 Stage Hi/Lo/Off w/50' Remote
Actual Dimensions	39"H x 73"L x 30.5"W
Weight	325 lbs.



**Self-diagnostic  
Troubleshooting  
Lights**



342 N. 400 E. Valparaiso, IN 46383  
219-464-8818 • 219-462-7985 • [www.heatwagon.com](http://www.heatwagon.com)