

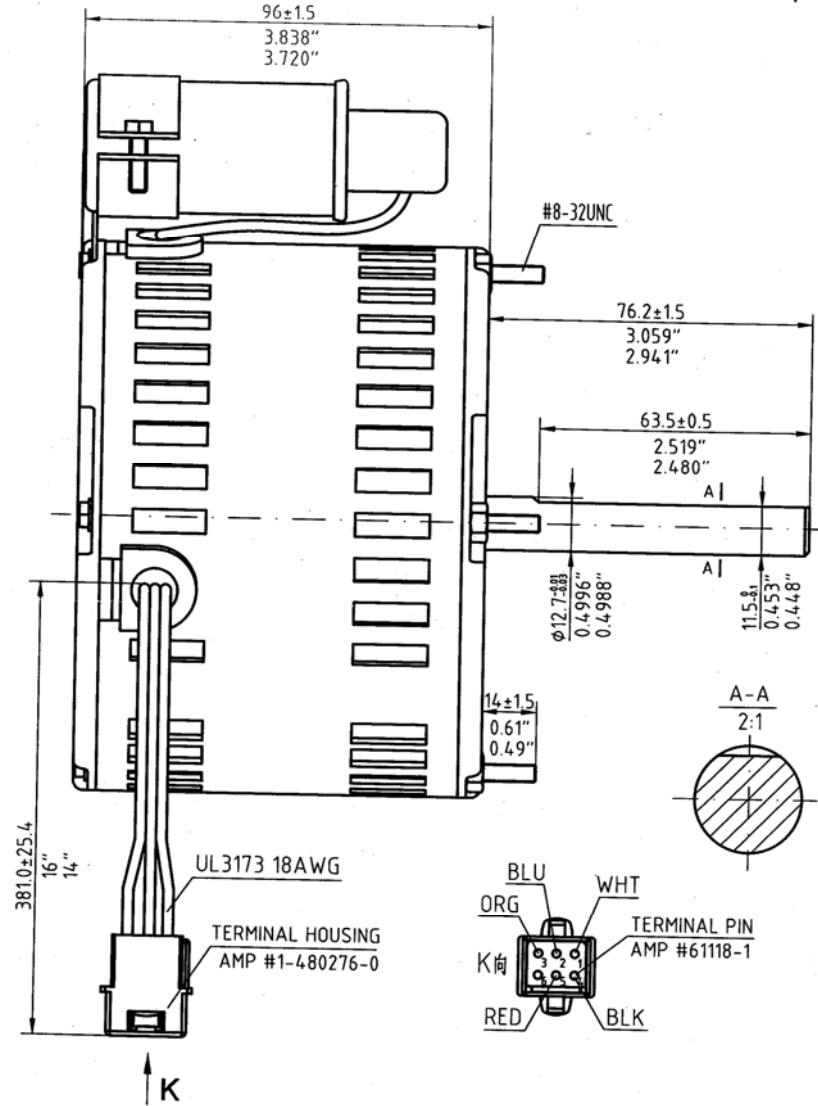
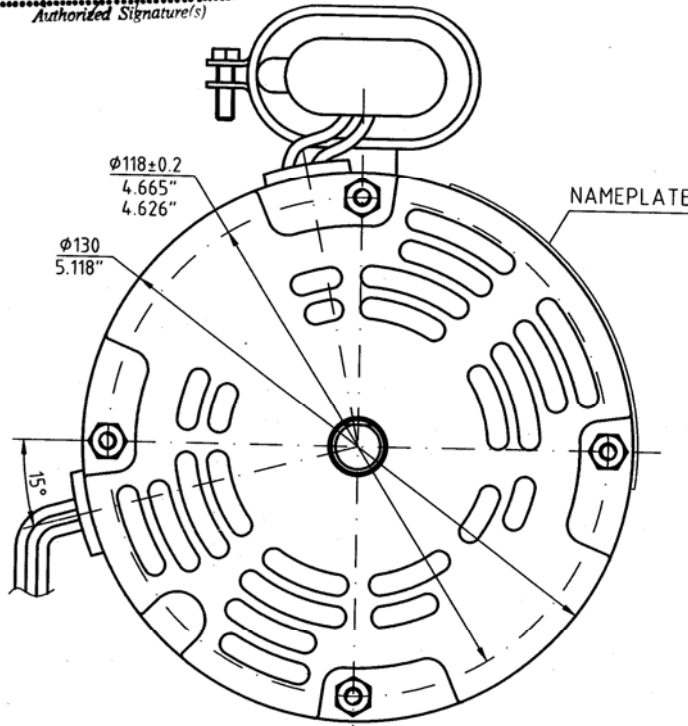
XXX

REV	SYM	Req.#	DESCRIPTION	DATE	BY
B			LOGO HSSA WAS CHIKEE	140614	WMF

For and on behalf of
CHIKEE ELECTRICAL MOTOR & APPLIANCE INDUSTRIAL CO., LTD

P. H. L. 07.8.14
Authorized Signature(s)

Label Information	
Model	CK42BS04M01
Part NO:	8550A
Hz	60/50
Horse Power	1/6
Volts	115/230
Amps	60Hz: 1.9/0.96 50Hz: 2.4/1.2
R.P.M.	1625/1400
Capacitance	10MFD/370V
Rotation	CCWLE
Protector	8CM036 145°C
Insulation Class	F
Actual Performance	
Running Amps	
Watts in Watts out	
Efficiency	
Torque	
RPM	
Motor Construction	
Winding wire size	
Winding Resistance	
Bearing	BALL
Operating temperature	
Length of time run	Continuous
Rotor	
Stator inside diameter	
Weight	
Physical	
Type of construction	OPAO
Motor body	96(3.779")
Mounting Position	Horizontal & Vertical
Stack	
Shaft Length Extension	76.2(3.0")
Shaft Flat	63.5(2.5")
Max. Shaft endplay	1.0(0.04")
Studs	#8-32UNC
Extra Mounting Nuts	
Cord Length	381(15")
Plug	N/A
Special cord feature	UL3173 18AWG 125°C
Electrical Warning Label	N/A

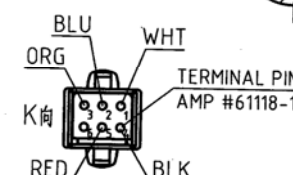
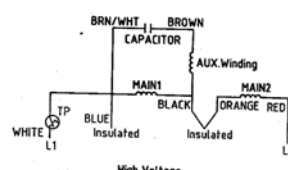
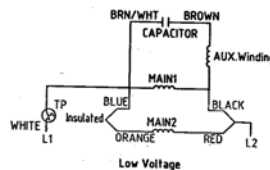


HSSA[®]

1/6HP 115/230V 60Hz 1.9/0.96A 1625RPM
115/230V 50Hz 2.4/1.2A 1400RPM PH1
10MFD/370V ROT.CCWLE CL.F 42Y SF1.0
AMB 40°C AIR OVER CONT CPN:8550A
THERMALLY PROTECTED
MOD: CK42BS04M01
DATE: _____ MADE IN CHINA

CONNECTION DIAGRAM
LO VOLTS HI VOLTS
WHT - L1 WHT - L1
BLU - INS BLU - INS
ORG - INS ORG - INS
BLK - L2 BLK - L2
RED - L2 RED - L2

UL E257043



Item	Code	Name and Model	QTY	Remark
120-400	±1.2	Edges	±5-30	±2
30-120	±0.8	Edges & Corners	±3-6	±1
6-30	±0.5	Chamfers	0.5-3	±0.4
3-6	±0.3	Mach Surface	6.4	
0.5-3	±0.2	Angle	±30°	
Designed by/Date		Stage Sign	Edition	Weight
Checked by/Date		S	B	1:1
Approved by/Date		Sheet 1/1	Unit mm	

CK42BS04M01
Specification
ChikEE Electrical Motor & Appliance Industrial Co., Ltd

COPYRIGHT BY ChikEE.
ALL RIGHT RESERVED.
REPRODUCTION IN WHOLE OR IN PART
WITHOUT PERMISSION IS PROHIBITED.