

FOR QUESTIONS, CALL THE
FLO AIRE NATIONAL
REGION 22
PHONE: (610) 239-8405
EMAIL: courtney.hardin@floaire.com

PATENT NUMBERS

AC-PSP (UNITED STATES) - US PATENT 7963830 B2.
AC-PSP WALL (CANADA) - CA PATENT 2820509.
AC-PSP ISLAND (CANADA) - CA PATENT 2520330.

HOOD INFORMATION - JOB#5910250

HOOD NO	TAG	MODEL	MANUFACTURER	LENGTH	MAX COOKING TEMP	TYPE	APPLIANCE DUTY	DESIGN CFM/FT	TOTAL EXH CFM	EXHAUST PLENUM							TOTAL SUPPLY CFM	HOOD CONSTRUCTION	HOOD CONFIG	
										RISER(S)									END TO END	ROW
										WIDTH	LENG	HEIGHT	DIA	CFM	VEL	SP				
1	8' Nonheated	5424 FX-2-PSP-F	FLOAIRE	8' 0"	600 DEG	I	HEAVY	234	1872	10'	17'	4'		1872	1586	-0.944"	1498	430 SS WHERE EXPOSED	ALONE	ALONE

HOOD INFORMATION

HOOD NO	TAG	FILTER(S)					LIGHT(S)			UTILITY CABINET(S)					FIRE SYSTEM PIPING	HOOD HANGING WEIGHT	
		TYPE	QTY	HEIGHT	LENGTH	EFFICIENCY @ 7 MICRONS	QTY	TYPE	WIRE GUARD	LOCATION	SIZE	FIRE SYSTEM		ELECTRICAL			SWITCHES
												TYPE	SIZE	MODEL #			QUANTITY
1	8' Nonheated	CAPTRATE SOLD FILTER	5	16"	16'	85% SEE FILTER SPEC	3	L55 SERIES E26	NO	RIGHT	12"x54"x24"			SC-111110MA	1 LIGHT 1 FAN	NO	642 LBS

HOOD OPTIONS

HOOD NO	TAG	OPTION									
1	8' Nonheated	RIGHT VERTICAL END PANEL	27"	TOP WIDTH,	21"	BOTTOM WIDTH,	80"	HIGH	INSULATED	430	
		SS.									
		LEFT VERTICAL END PANEL	27"	TOP WIDTH,	21"	BOTTOM WIDTH,	80"	HIGH	INSULATED	430	
		SENSOR-CV.									

PERFORATED SUPPLY PLENUM(S)

HOOD NO	TAG	POS	LENGTH	WIDTH	HEIGHT	TYPE	RISER(S)				
							WIDTH	LENG	DIA	CFM	SP
1	8' Nonheated	Front	108'	16"	6"	MUA	12"	28"		748	0.181"
						MUA	12"	28"		748	0.181"

SPECIFICATION: CAPTRATE® GREASE-STOP® SOLD FILTER

THE CAPTRATE GREASE-STOP SOLD FILTER IS A SINGLE-STAGE FILTER FEATURING A UNIQUE S-Baffle DESIGN IN CONJUNCTION WITH A SLOTTED REAR Baffle DESIGN, TO DELIVER EXCEPTIONAL FILTRATION EFFICIENCY.

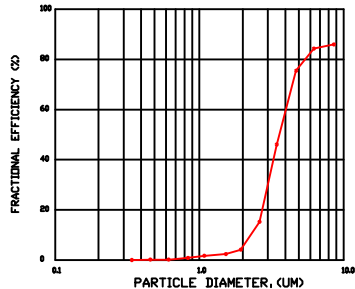
FILTER IS STAINLESS STEEL CONSTRUCTION, AND SIZED TO FIT INTO STANDARD 2-INCH DEEP HOOD CHANNEL(S).

UNITS SHALL INCLUDE STAINLESS STEEL HANDLES AND A FASTENING DEVICE TO SECURE THE TWO COMPONENTS WHEN ASSEMBLED.

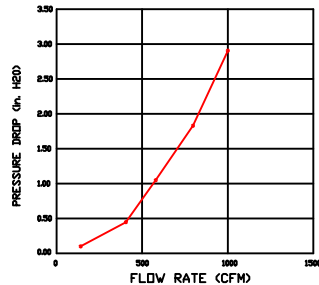
GREASE EXTRACTION EFFICIENCY PERFORMANCE SHALL REMOVE AT LEAST 75% OF GREASE PARTICLES FIVE MICRONS IN SIZE, AND 85% GREASE PARTICLES SEVEN MICRONS IN SIZE AND LARGER, WITH A CORRESPONDING PRESSURE DROP NOT TO EXCEED 1.0 INCHES OF WATER GAUGE.

THE CAPTRATE GREASE-STOP SOLD WAS TESTED TO ASTM STANDARD ASTM F2519-05. MANUFACTURER APPROVED FOR USE IN SOLID FUEL APPLICATIONS AS A SPARK ARRESTER.

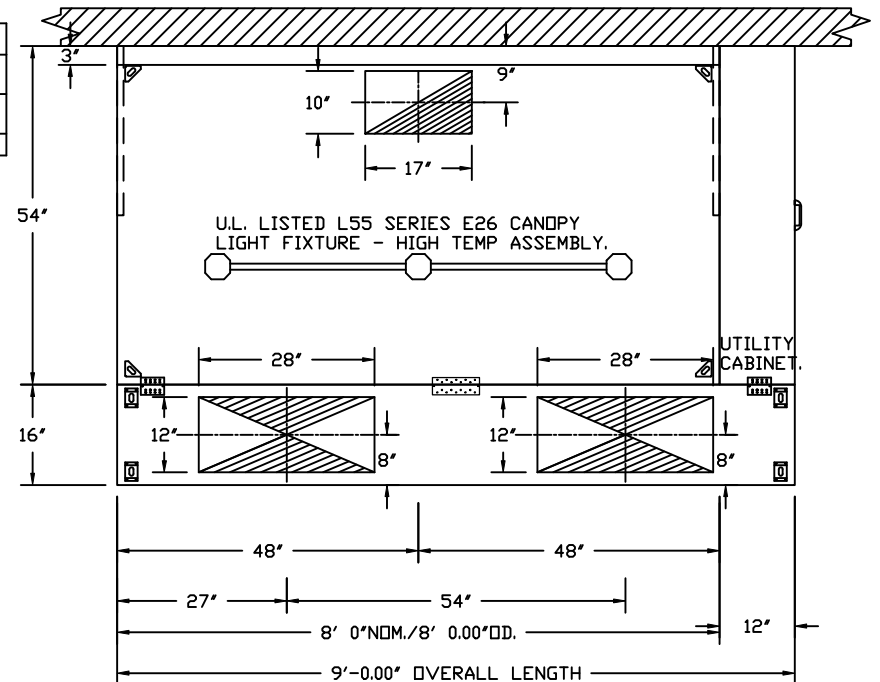
EFFICIENCY VS. PARTICLE DIAMETER



PRESSURE DROP VS. FLOW RATE



CAPTRATE FILTERS ARE BUILT IN COMPLIANCE WITH:
NFPA #96.
NSF STANDARD #2.
UL STANDARD #1046.
INT. MECH. CODE (IMC).
ULC-S649.

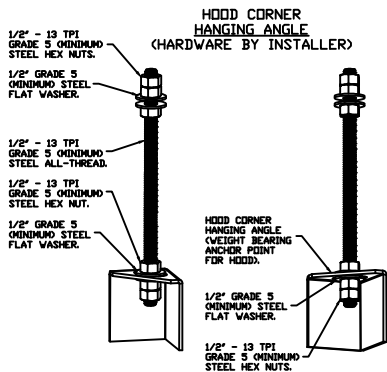


PLAN VIEW - HOOD #1 (8' Nonheated)
8' 0.00" LONG 5424FX-2-PSP-F



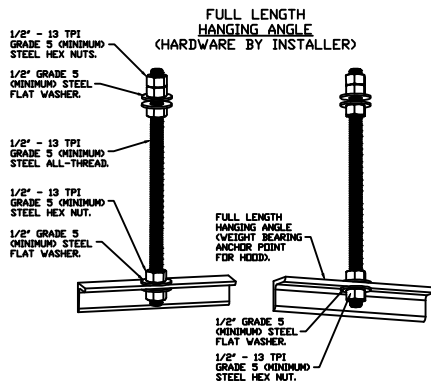
FloAire

JOB 8' Nonheated UC Right** Hood Stock	
LOCATION ,	
DATE 3/20/2023	JOB # 5910250
DWG # 1	DRAWN BY courtneyh
REV.	SCALE 3/8" = 1'-0"



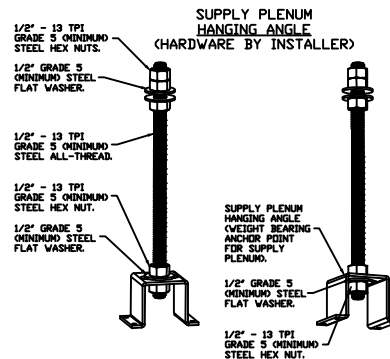
ASSEMBLY INSTRUCTIONS

HANGING ANGLE MUST BE SUPPORTED WITH 1/2" - 13 TPI GRADE 5 (MINIMUM) ALL-THREAD. SANDWICH HANGING ANGLES AND CEILING ANCHOR POINTS WITH 1/2" GRADE 5 (MINIMUM) STEEL FLAT WASHERS AND 1/2" - 13 TPI GRADE 5 (MINIMUM) HEX NUTS AS SHOWN. MUST USE DOUBLED HEX NUT CONFIGURATION BENEATH HOOD HANGING ANGLES AND ABOVE CEILING ANCHORS. MAINTAIN 1/4" OF EXPOSED THREADS BENEATH BOTTOM HEX NUT. TORQUE ALL HEX NUTS TO 57 FT-LBS.



ASSEMBLY INSTRUCTIONS

HANGING ANGLE MUST BE SUPPORTED WITH 1/2" - 13 TPI GRADE 5 (MINIMUM) ALL-THREAD. SANDWICH HANGING ANGLES AND CEILING ANCHOR POINTS WITH 1/2" GRADE 5 (MINIMUM) STEEL FLAT WASHERS AND 1/2" - 13 TPI GRADE 5 (MINIMUM) HEX NUTS AS SHOWN. MUST USE DOUBLED HEX NUT CONFIGURATION ABOVE CEILING ANCHORS. SINGLE HEX NUT BENEATH HANGING ANGLE IS ACCEPTABLE FOR FULL LENGTH HANGING ANGLES. MAINTAIN 1/4" OF EXPOSED THREADS BENEATH BOTTOM HEX NUT. TORQUE ALL HEX NUTS TO 57 FT-LBS.



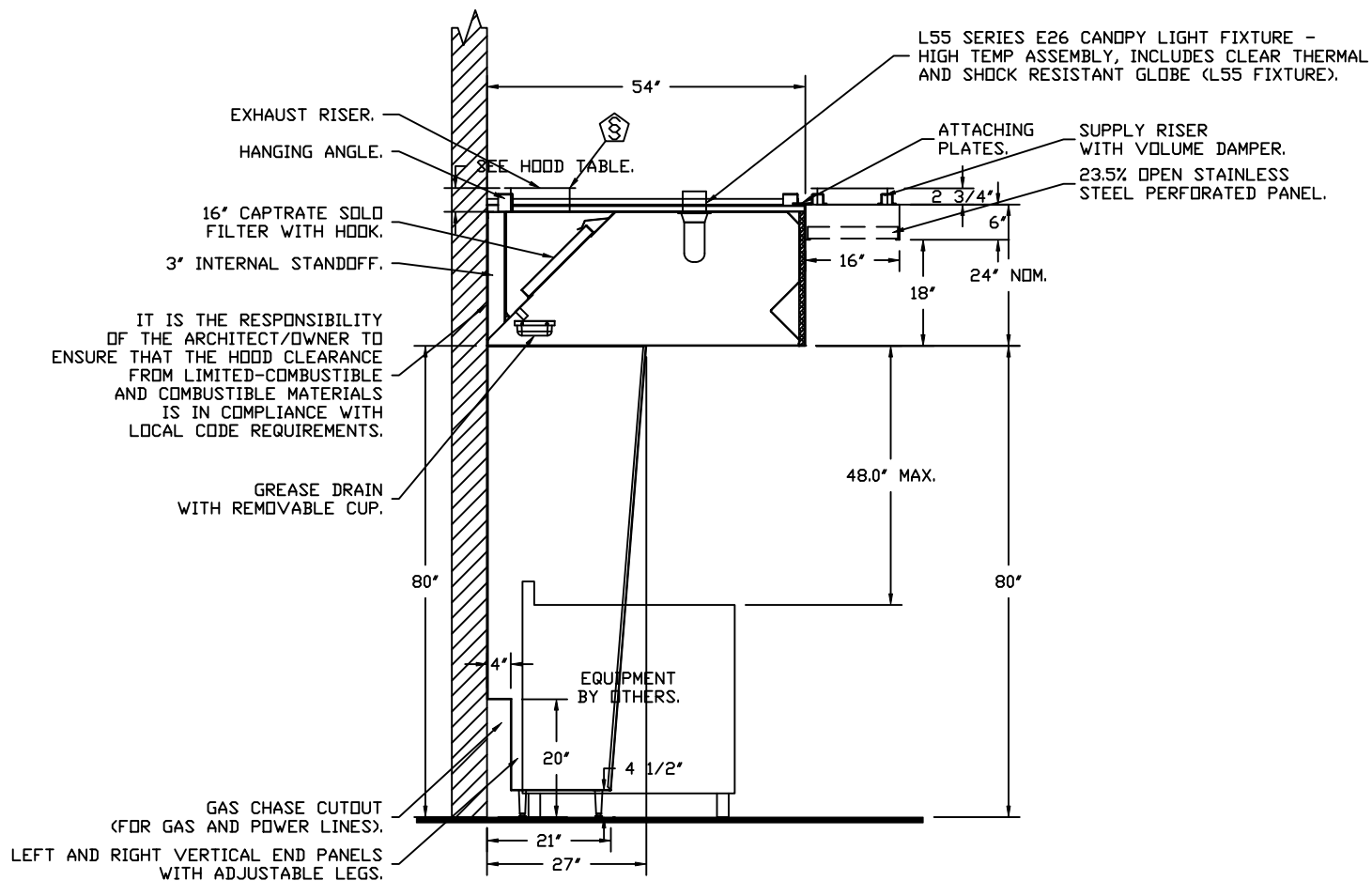
ASSEMBLY INSTRUCTIONS

HANGING ANGLE MUST BE SUPPORTED WITH 1/2" - 13 TPI GRADE 5 (MINIMUM) ALL-THREAD. SANDWICH HANGING ANGLES AND CEILING ANCHOR POINTS WITH 1/2" GRADE 5 (MINIMUM) STEEL FLAT WASHERS AND 1/2" - 13 TPI GRADE 5 (MINIMUM) HEX NUTS AS SHOWN. MUST USE DOUBLED HEX NUT CONFIGURATION ABOVE CEILING ANCHORS. SINGLE HEX NUT BENEATH HANGING ANGLE IS ACCEPTABLE FOR PSP HANGING ANGLES. MAINTAIN 1/4" OF EXPOSED THREADS BENEATH BOTTOM HEX NUT. TORQUE ALL HEX NUTS TO 57 FT-LBS.



FloAire

JOB 8' Nonheated UC Right** Hood Stock			
LOCATION ,			
DATE	3/20/2023	JOB #	5910250
DWG #	2	DRAWN BY	courtneyh
REV.		SCALE	3/8" = 1'-0"



SECTION VIEW - MODEL 5424FX-2-PSP-F
HOOD - #1 (8' Nonheated)



FloAire

JOB 8' Nonheated UC Right** Hood Stock	
LOCATION ,	
DATE 3/20/2023	JOB # 5910250
DWG # 3	DRAWN BY courtneyh
REV.	SCALE 3/8" = 1'-0"

EXHAUST FAN INFORMATION – JOB#5910250

FAN UNIT NO	TAG	QTY	FAN UNIT MODEL #	MANUFACTURER	CFM	ESP	RPM	MOTOR ENCL	HP	BHP	PHASE	VOLT	FLA	DISCHARGE VELOCITY	WEIGHT (LBS)	SONES
1	8' NONHEATED	1	DU85H	FLOAIRE	1872	1.100	1429	TEAD-ECM	0.750	0.5280	1	115	8.9	592 FPM	94	13.4

MUA FAN INFORMATION – JOB#5910250

FAN UNIT NO	TAG	QTY	FAN UNIT MODEL #	BLOWER	HOUSING	MIN CFM	DESIGN CFM	ESP	RPM	MOTOR ENCL	HP	BHP	PHASE	VOLT	FLA	MCA	MOCF	WEIGHT (LBS)	SONES
2	8' NONHEATED	1	SA10	G10D	A1	-	1498	0.300	707	TEAD-ECM	1.000	0.2820	1	115	11.6	15.6A	25A	244	12

FAN OPTIONS

FAN UNIT NO	TAG	QTY	DESCRIPTION
1	8' NONHEATED	1	GREASE BOX
		1	HINGE KIT – SHIPS LOOSE FOR CURB SUPPLIED BY OTHERS
		1	ECM WIRING PACKAGE – EXHAUST – MODBUS CONTROL –MSC- (TELCD), CCW ROTATION
		1	2 YEAR PARTS WARRANTY
2	8' NONHEATED	1	MOTORIZED BACKDRAFT DAMPER FOR SIZE 1 HOUSING – MEETS AMCA CLASS 1A RATING
		1	SIZE 1 UNTEMPERED COMMERCIAL DOWN DISCHARGE FOR DIRECT DRIVE AHUS
		1	ECM WIRING PACKAGE-SUPPLY – MODBUS CONTROL –MSC- (TELCD), CW ROTATION
		1	2 YEAR PARTS WARRANTY

FAN ACCESSORIES

FAN UNIT NO	TAG	EXHAUST			SUPPLY			
		GREASE CUP	GRAVITY DAMPER	WALL MOUNT	SIDE DISCHARGE	GRAVITY DAMPER	MOTORIZED DAMPER	WALL MOUNT
1	8' NONHEATED	YES						
2	8' NONHEATED						YES	

CURB ASSEMBLIES

NO	ON FAN	TAG	WEIGHT	ITEM	SIZE
1	# 1	8' NONHEATED	32 LBS	CURB	23.000"W X 23.000"L X 20.000"H ALONG LENGTH, RIGHT VENTED.
2	# 2	8' NONHEATED	29 LBS	CURB	21.000"W X 21.000"L X 20.000"H ALONG LENGTH, RIGHT.

FAN SOUND DATA

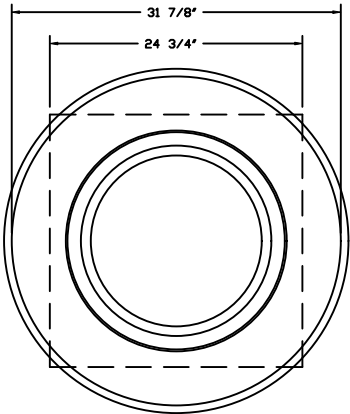
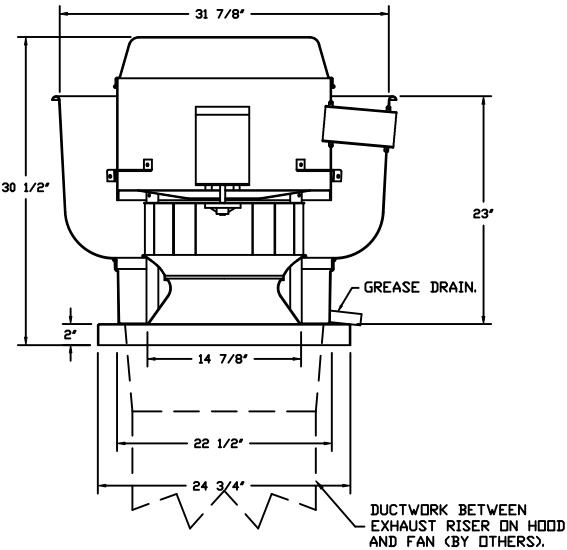
FAN UNIT NO	TAG	MOTOR	SOUND DATA			OCTAVE BAND SOUND DATA								
			LWA	SONES @ 5 FT	DBA @ 5 FT	DISTANCE (FT)	63 HZ	125 HZ	250 HZ	500 HZ	1 KHZ	2 KHZ	4 KHZ	8 KHZ
1	8' NONHEATED	EXHAUST	76.9	13.3815377654901	65.4	5	78.3	78.2	81.1	72.9	69.8	67.7	63.3	57.1
2	8' NONHEATED	SUPPLY	75.3	11.9760404172255	63.8	5	76.8	75.3	73.5	70.7	70.9	68	63.6	60.6



FloAire

JOB 8' Nonheated UC Right** Hood Stock	
LOCATION ,	
DATE 3/20/2023	JOB # 5910250
DWG # 4	DRAWN BY courtneyh
REV.	SCALE 3/8" = 1'-0"

FAN #1 DU85H - EXHAUST FAN (8' NONHEATED)



TOP VIEW

FEATURES:

- DIRECT DRIVE CONSTRUCTION (NO BELTS/PULLEYS).
- ROOF MOUNTED FANS.
- RESTAURANT MODEL.
- UL705 AND UL762 AND ULC-S645
- VARIABLE SPEED CONTROL.
- INTERNAL WIRING.
- THERMAL OVERLOAD PROTECTION (SINGLE PHASE).
- HIGH HEAT OPERATION 300°F (149°C).
- GREASE CLASSIFICATION TESTING.
- NEMA 3R SAFETY DISCONNECT SWITCH.

NORMAL TEMPERATURE TEST

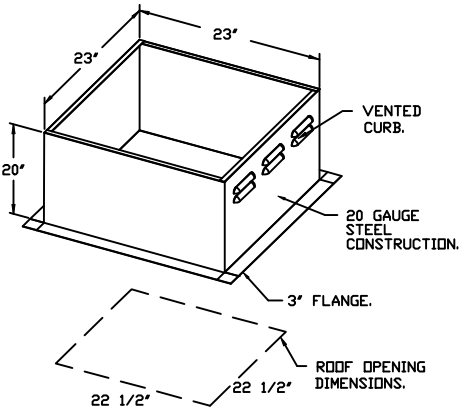
EXHAUST FAN MUST OPERATE CONTINUOUSLY WHILE EXHAUSTING AIR AT 300°F (149°C) UNTIL ALL FAN PARTS HAVE REACHED THERMAL EQUILIBRIUM, AND WITHOUT ANY DETERIORATING EFFECTS TO THE FAN WHICH WOULD CAUSE UNSAFE OPERATION.

ABNORMAL FLARE-UP TEST

EXHAUST FAN MUST OPERATE CONTINUOUSLY WHILE EXHAUSTING BURNING GREASE VAPORS AT 600°F (316°C) FOR A PERIOD OF 15 MINUTES WITHOUT THE FAN BECOMING DAMAGED TO ANY EXTENT THAT COULD CAUSE AN UNSAFE CONDITION.

OPTIONS

- GREASE BOX.
- HINGE KIT - SHIPS LOOSE FOR CURB SUPPLIED BY OTHERS.
- ECM WIRING PACKAGE - EXHAUST - MODBUS CONTROL
- MSC- (TELCO), CCW ROTATION.
- 2 YEAR PARTS WARRANTY.



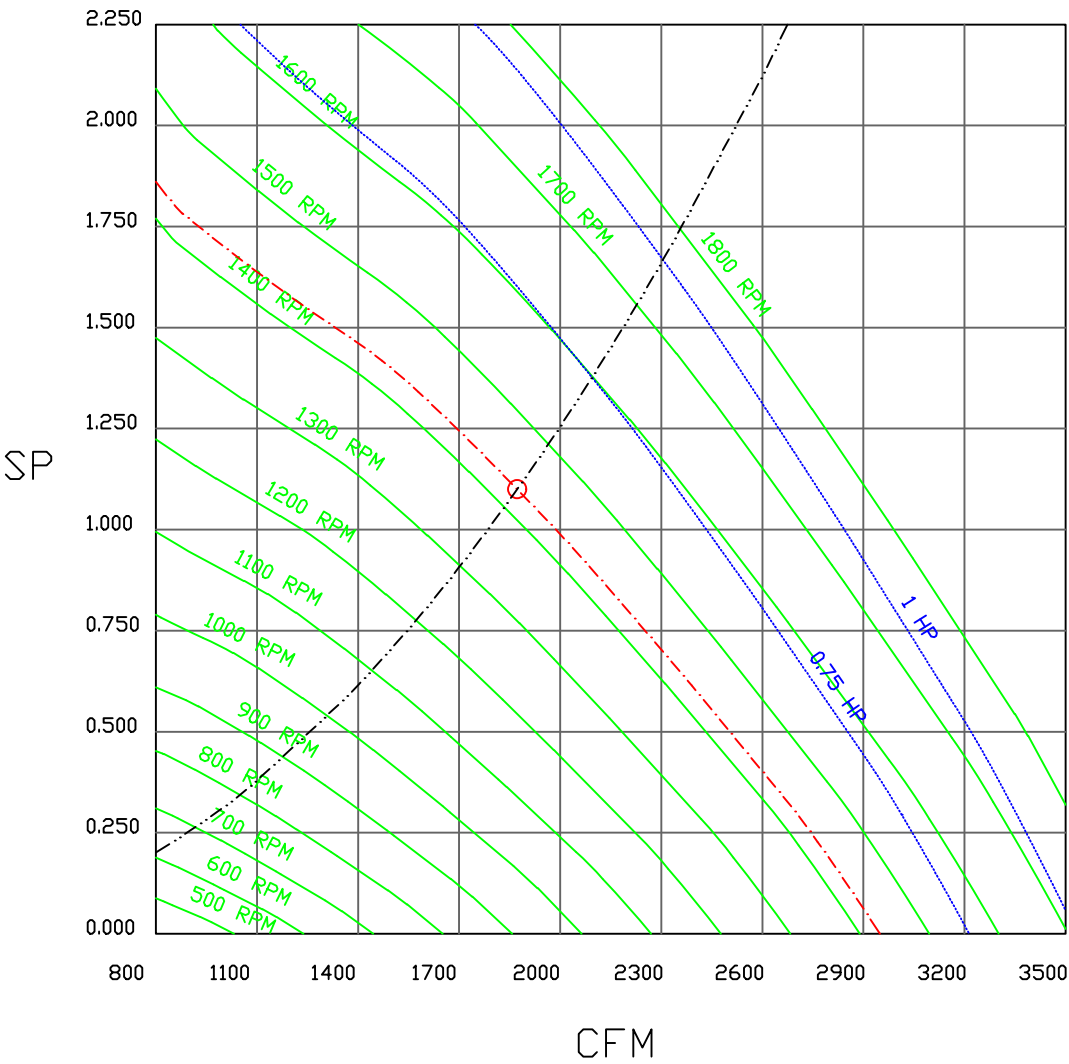
FloAire



JOB 8' Nonheated UC Right** Hood Stock	
LOCATION ,	
DATE 3/20/2023	JOB # 5910250
DWG # 5	DRAWN BY courtneyh
REV.	SCALE 3/8" = 1'-0"

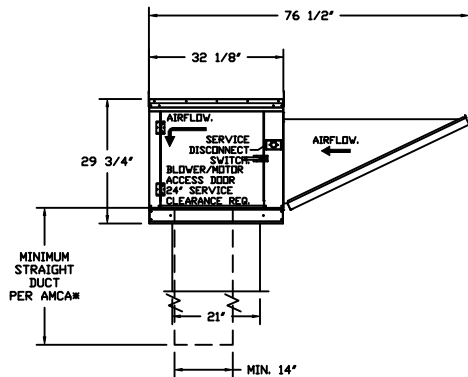
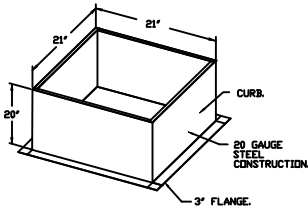
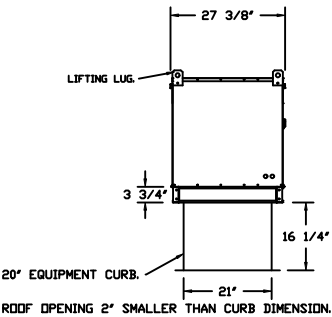
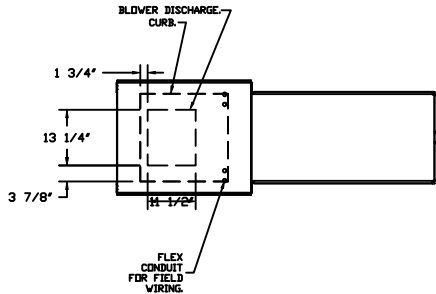
FAN#1 (8' NONHEATED) - EXHAUST PERFORMANCE CURVES.

1872 CFM, 1.1 SP @ 1429 RPM AND 0.528 BHP AT 0 FEET AND 120 DEG F.
* PLEASE NOTE THAT THESE CURVES WERE ADJUSTED FOR JOB SPECIFIC TEMPERATURE AND ALTITUDE.



- FAN #2 SA10D - SUPPLY FAN (8' NONHEATED)
1. DIRECT DRIVE UNTEMPERED SUPPLY UNIT WITH 10" BLOWER IN SIZE #1 HOUSING WITH SPEED CONTROL, DISCONNECT SWITCH.
 2. INTAKE HOOD WITH E2 FILTERS.
 3. DOWN DISCHARGE - AIR FLOW RIGHT -> LEFT.
 4. MOTORIZED BACK DRAFT DAMPER 16" X 18" FOR SIZE 1 UNTEMPERED UNITS W/EXTENDED SHAFT, STANDARD GALVANIZED CONSTRUCTION, 3/4" REAR FLANGE, LOW LEAKAGE, TFB120S ACTUATOR INCLUDED.
 5. DOWN DISCHARGE CONSTRUCTION FOR SIZE 1 UNTEMPERED DIRECT DRIVE AHUS.
 6. ECM WIRING PACKAGE MODBUS CONTROL FOR SUPPLY EC MOTORS. MSC CONTROLLER. **DO NOT ORDER UNDER WARRANTY, SEE PART NUMBER *CAS MSC**.
 7. HINGED DOUBLE WALL INSULATED DOOR ASSEMBLY (BURNER/BLOWER SECTION).
 8. 2 YEAR PARTS WARRANTY

**NOTE: SUPPLY DUCT MUST BE INSTALLED TO MEET SMACNA STANDARDS. A MINIMUM STRAIGHT DUCT LENGTH MUST BE MAINTAINED DOWNSTREAM OF UNIT DISCHARGE AS OUTLINED IN AMCA PUBLICATION 201. WHEN USING RECTANGULAR DUCTWORK, ELBOWS MUST BE RADIUS THROAT, RADIUS BACK WITH TURNING VANES. FLEXIBLE DUCTWORK AND SQUARE THROAT/SQUARE BACK ELBOWS SHOULD NOT BE USED. ANY TRANSITION AND/OR TURNS IN THE DUCTWORK WILL CAUSE SYSTEM EFFECT. SYSTEM EFFECT WILL DRASTICALLY INCREASE STATIC PRESSURE AND REDUCE AIRFLOW. DO NOT RELY ON UNIT TO SUPPORT DUCT IN ANY WAY. FAILURE TO PROPERLY SIZE DUCTWORK MAY CAUSE SYSTEM EFFECTS AND REDUCE PERFORMANCE OF THE EQUIPMENT. SUGGESTED STRAIGHT DUCT SIZE IS 14" X 14".

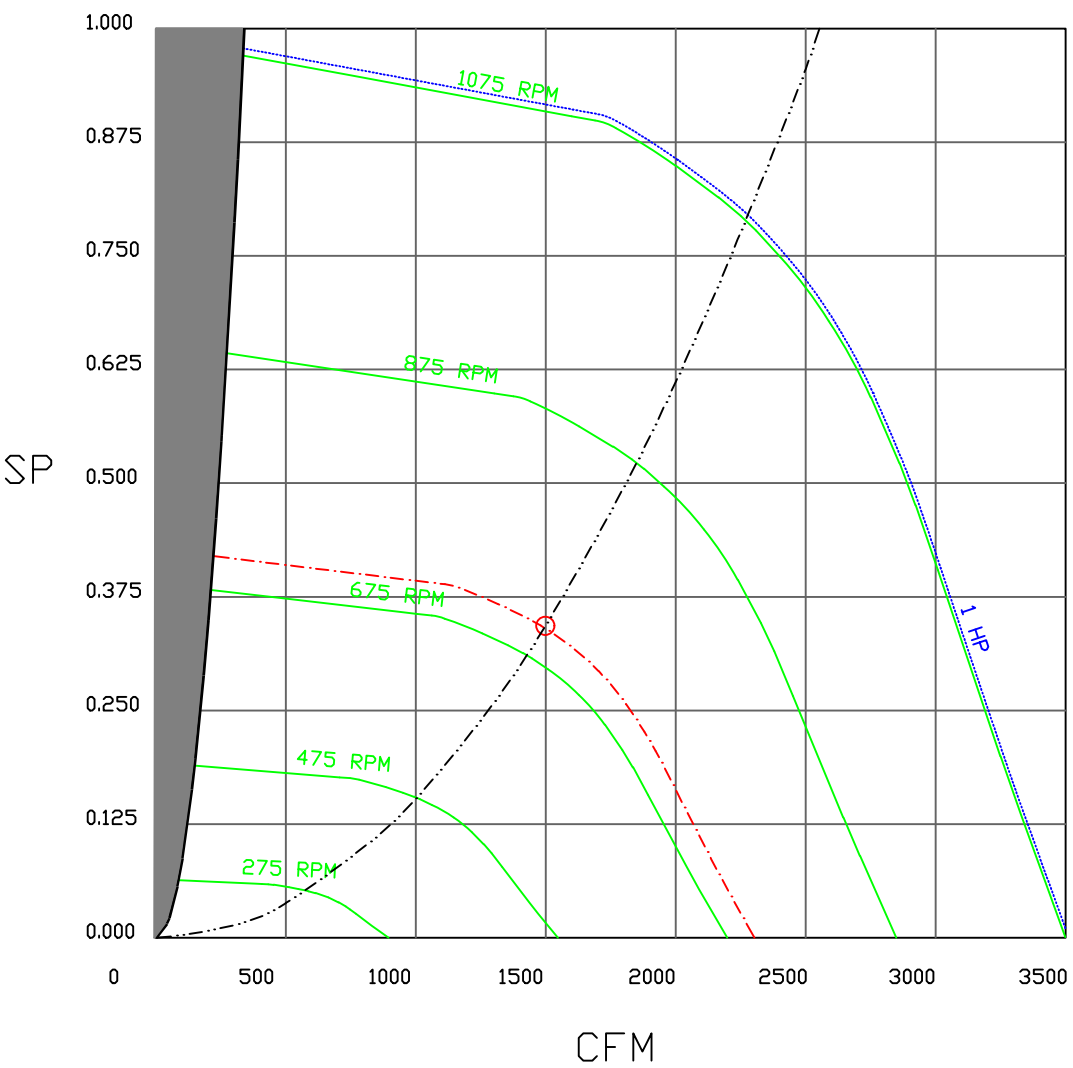


FloAire

JOB 8' Nonheated UC Right** Hood Stock			
LOCATION ,			
DATE	3/20/2023	JOB #	5910250
DWG #	7	DRAWN BY	courtneyh
REV.		SCALE	1/4" = 1'-0"

FAN#2 (8' NONHEATED) - SUPPLY PERFORMANCE CURVES.

1498 CFM, 0.343 SP @ 707 RPM AND 0.282 BHP AT 0 FEET AND 70 DEG F.
* PLEASE NOTE THAT THESE CURVES WERE ADJUSTED FOR JOB SPECIFIC TEMPERATURE AND ALTITUDE.





GREASE DUCT & CHIMNEY SPECIFICATIONS:
PROVIDE GREASE DUCT EQUAL TO FLOAIRE MODEL "FDW"
ROUND 20 GAUGE 430 STAINLESS STEEL DUCTWORK. MODEL "FDW"
IS LISTED TO UL-1978 AND IS INSTALLED USING "V" CLAMP LOCKING
CONNECTIONS SEALED WITH 3M FIRE BARRIER 2000 PLUS. MODEL "FDW"
DOES NOT REQUIRE WELDING PROVIDING IT HAS BEEN INSTALLED PER
THE MANUFACTURES INSTALLATION GUIDE.
PROVIDE RATED ACCESS DOORS AT EVERY CHANGE IN DIRECTION AND EVERY 12' ON CENTER.
PER MANUFACTURES LISTING MODEL "FDW" HORIZONTAL RUNS LESS THAN 75 FT. CAN BE
SLOPED 1/16" PER 12", HORIZONTAL RUNS MORE THAN 75 FT. CAN BE SLOPED 3/16" PER 12".
DUCT SHOULD BE SLOPED AS MUCH AS POSSIBLE TO REDUCE THE CHANCE OF GREASE
ACCUMULATION IN HORIZONTAL RUNS.

IF THE DUCT OR CHIMNEY IS WITHIN 18 INCHES OF COMBUSTIBLE MATERIAL, PROVIDE
UL-2221 OR UL-103 HT LISTED DOUBLE WALL GREASE DUCT OR DOUBLE WALL CHIMNEY
EQUAL TO FLOAIRE MODEL "FDW- 2R, 2R TYPE HT, 3R, OR 3Z" ROUND 20 GAUGE 430
STAINLESS INNER DUCT INSULATED WITH A 24 GAUGE 430 STAINLESS OUTER SHELL.

CUSTOMER APPROVAL TO MANUFACTURE:

APPROVED AS NOTED	<input type="checkbox"/>
APPROVED WITH NO EXCEPTION TAKEN	<input type="checkbox"/>
REVISE AND RESUBMIT	<input type="checkbox"/>
SIGNATURE _____	
YOUR TITLE _____	DATE _____

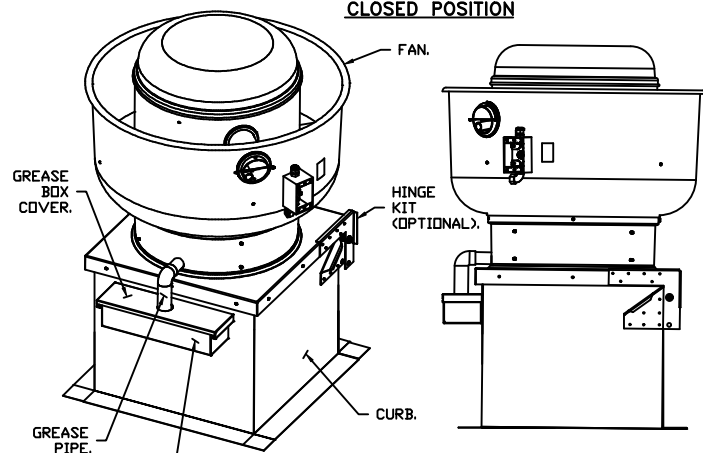


FloAire

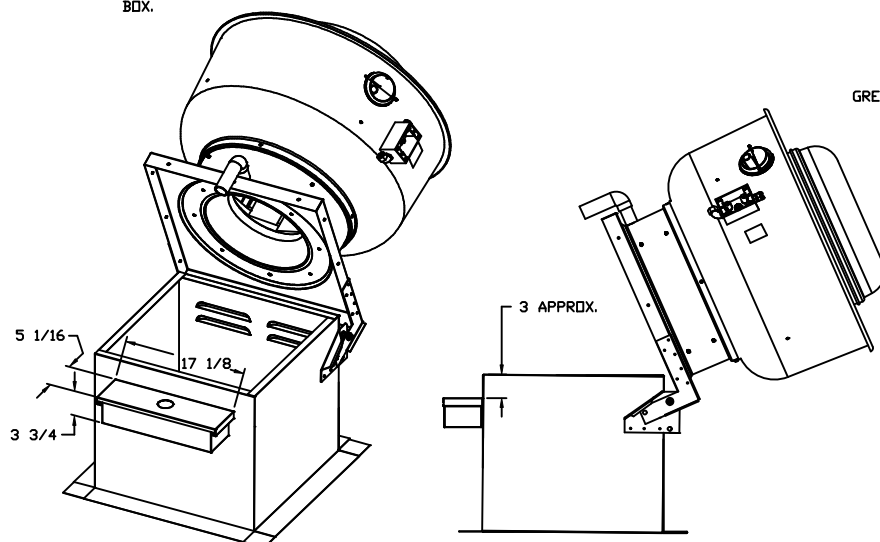
JOB 8' Nonheated UC Right** Hood Stock			
LOCATION ,			
DATE	3/20/2023	JOB #	5910250
DWG #	9	DRAWN BY	courtneyh
REV.		SCALE	3/8" = 1'-0"

GREASE BOX INSTALLATION

CLOSED POSITION



OPEN POSITION



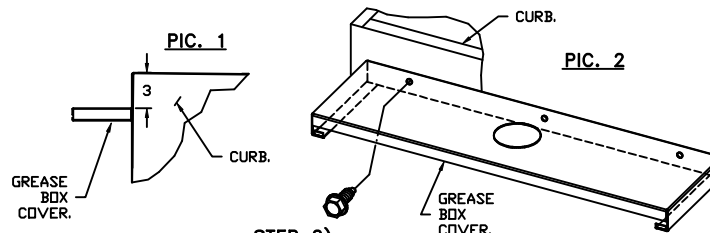
PARTS INCLUDED

GREASE BOX.
GREASE BOX COVER.
GREASE PIPE.
SHEET METAL SCREWS
3 - LONG (3/4" LG.).

GREASE BOX FIELD INSTALLATION

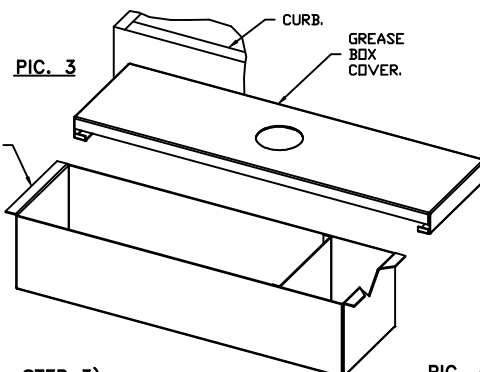
STEP 1)

ATTACH GREASE BOX COVER TO THE CURB,
HOLD 3" DIMENSION AS SHOWN ON PIC. 1.
SCREW GREASE BOX COVER TO CURB USING (3) LONG (3/4" LG.)
SCREWS AS SHOWN ON PIC. 2.



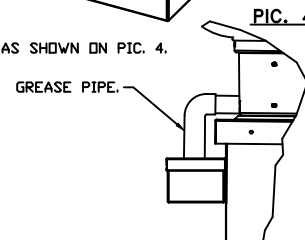
STEP 2)

ATTACH GREASE BOX TO GREASE BOX COVER, SLIDE AND DROP.
AS SHOWN ON PIC. 3.



STEP 3)

INSTALL GREASE PIPE AS SHOWN ON PIC. 4.



*NOTE: UL 705 INSTALL.



FloAire

JOB 8' Nonheated UC Right** Hood Stock			
LOCATION ,			
DATE	3/20/2023	JOB #	5910250
DWG #	10	DRAWN BY	courtneyh
REV.		SCALE	3/8" = 1'-0"

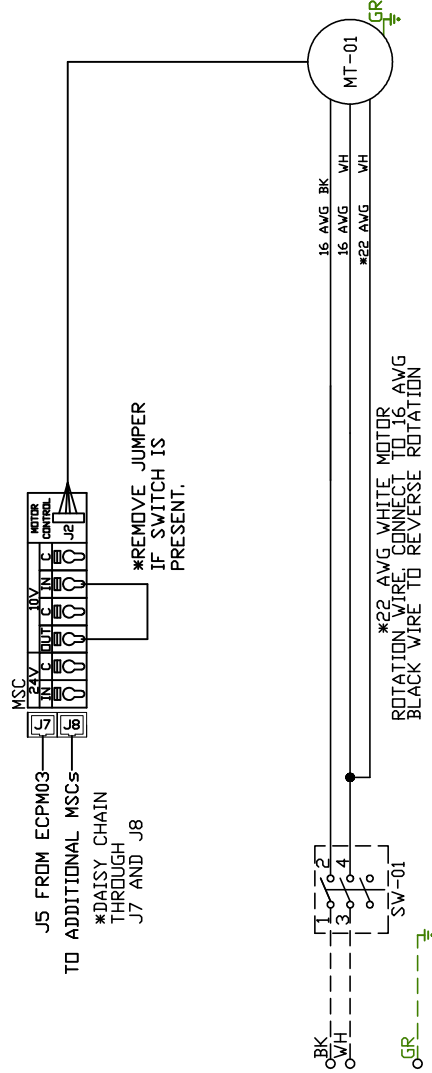
Exhaust Fan Wiring

J0B 5910250 - 8' Nonheated UC Right** Hood ...

DRAWING NUMBER EXH5910250-1

SHIP DATE 3/20/2023

MODEL DU85H



Label	Component Description	Location
MT-01	Fan Motor	[3]
MSC	Motor Speed Controller	[1]
SW-01	Main disconnect switch	[3]

EXHAUST	MOTOR INFO 0.75HP-115V-1P-8.9FLA
---------	-------------------------------------

ELECTRICAL INFORMATION
MOTOR/CTRL MCA: 11.2A
MOTOR/CTRL MOP: 20A

NOTES
 --- DENOTES FIELD WIRING
 --- DENOTES INTERNAL WIRING

WIRE COLOR

NAME _____

BK	-	BLACK	YW	-	YELLOW
BL	-	BLUE	GR	-	GREEN
BR	-	BROWN	GY	-	GRAY
OR	-	ORANGE	PR	-	PURPLE
RD	-	RED	PK	-	PINK
WH	-	WHITE			

AirHandler Wiring

JOB 5910250 - 8' Nonheated UC Right** Hood ...

DRAWING NUMBER A5910250-2

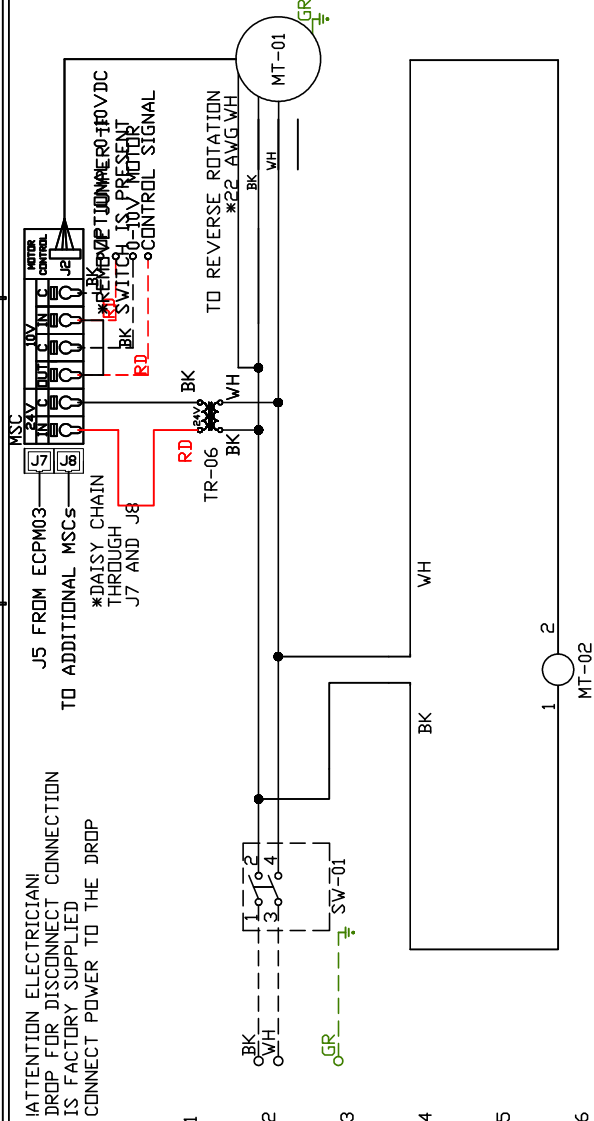
SHIP DATE 3/20/2023

MODEL SAI10

ATTENTION ELECTRICIAN!
DROP FOR DISCONNECT CONNECTION
IS FACTORY SUPPLIED
CONNECT POWER TO THE DROP

J5 FROM ECPW03
TO ADDITIONAL MSCs

*DAISY CHAIN
THROUGH
J7 AND J8



Installed Options
Motorized Back Draft Damper

Component Identification
Label Description Location

MT-01 Supply motor [2]
MT-02 Damper motor [5]

MSC Motor Speed Controller [1]

SW-01 Main disconnect switch [2]

TR-06 24VAC 20VA Transformer[1]

SUPPLY MOTOR INFO
1HP-115V-IP-11.6FLA

ELECTRICAL INFORMATION
MOTOR/CTRL CIRCUIT MCA: 15.6A
MOTOR/CTRL CIRCUIT MOP: 25A

NOTES
- - - - - DENOTES FIELD WIRING
_____ DENOTES INTERNAL WIRING

WIRE COLOR

BK - BLACK YW - YELLOW
BL - BLUE GR - GREEN
BR - BROWN GY - GRAY
OR - ORANGE PR - PURPLE
RD - RED PK - PINK
WH - WHITE

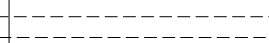
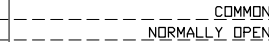
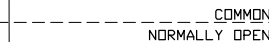
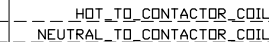
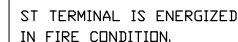
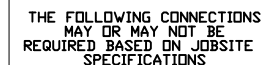
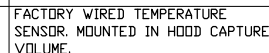
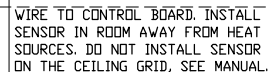
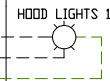
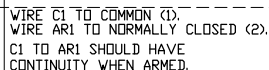
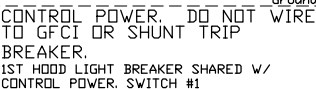
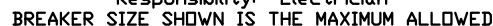
ELECTRICAL PACKAGE - JOB#5910250

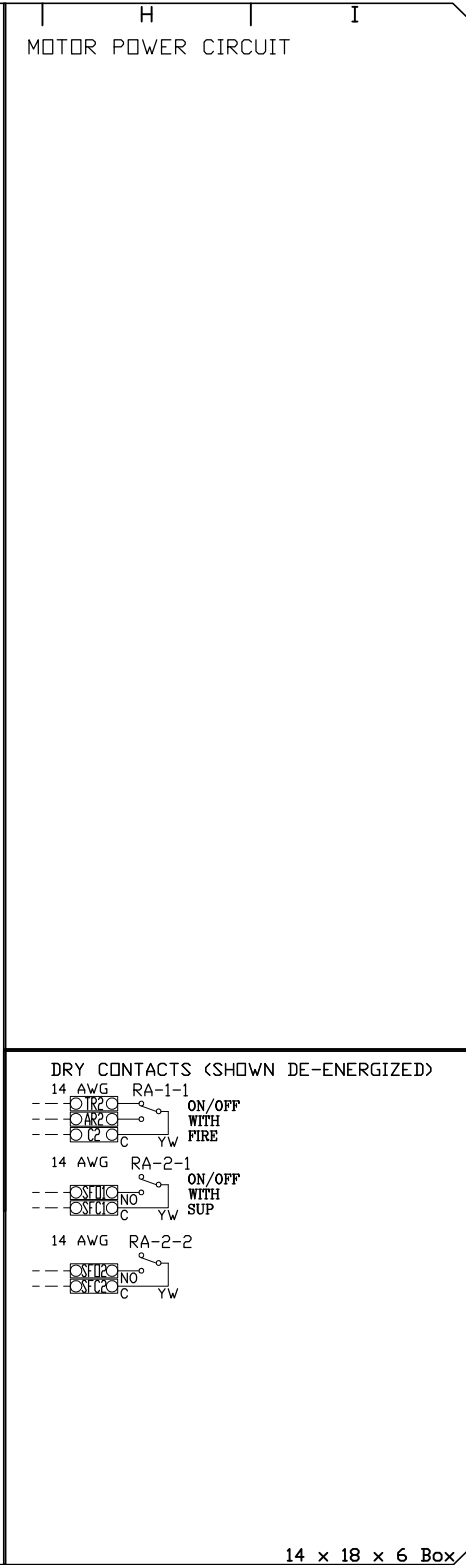
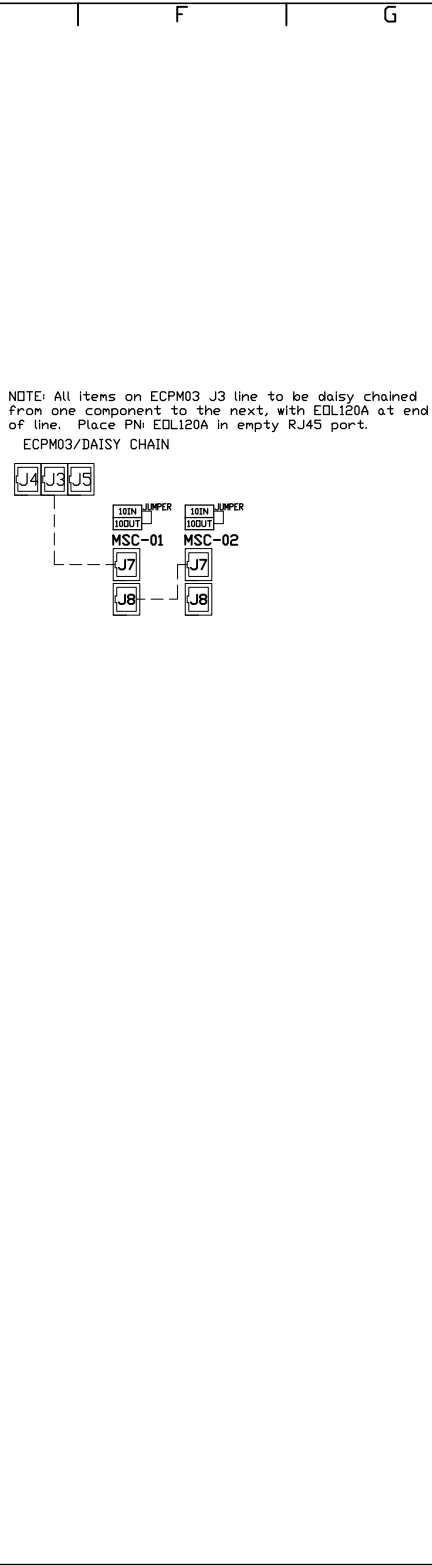
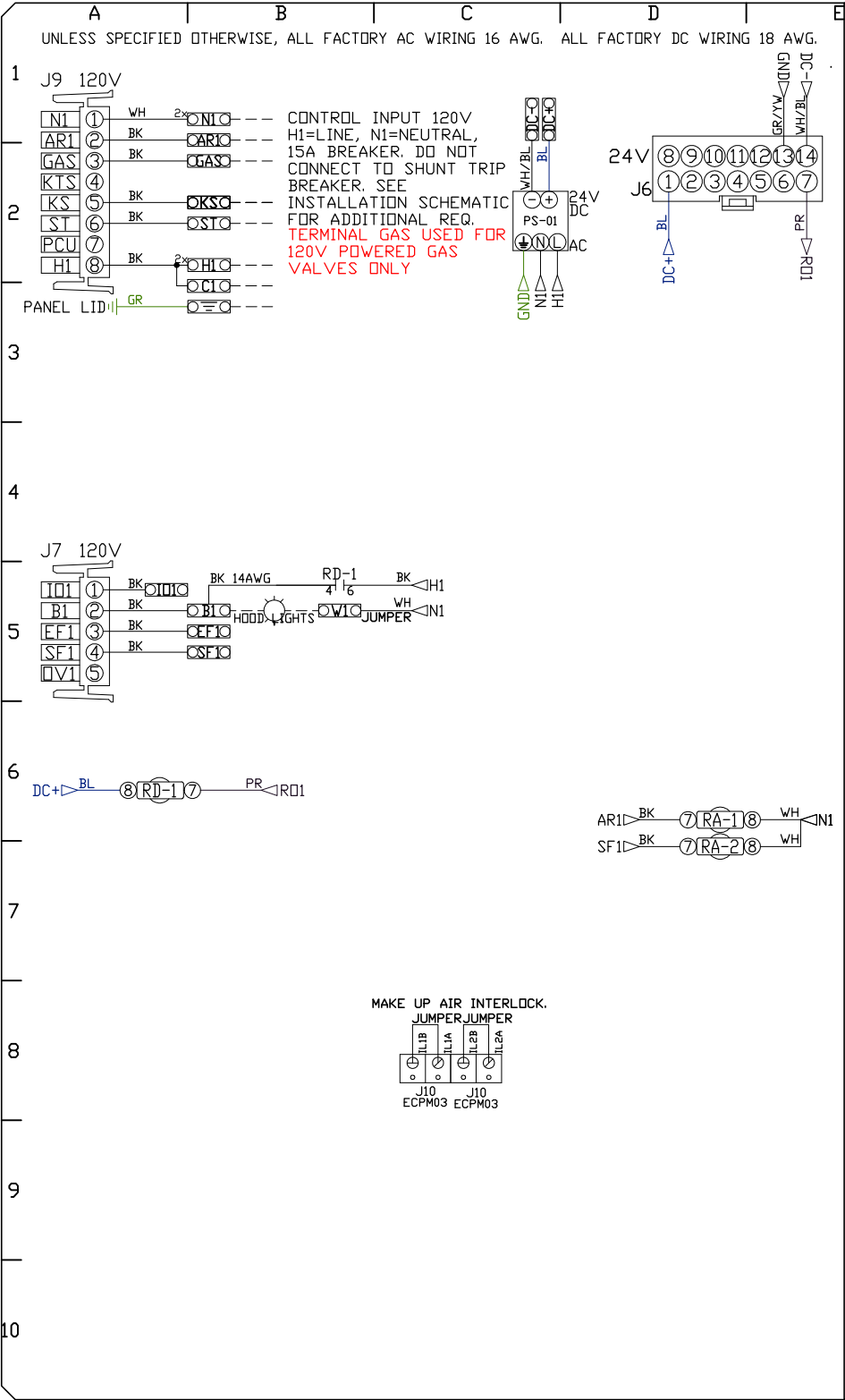
NO	TAG	PACKAGE #	LOCATION	SWITCHES		OPTION	FANS CONTROLLED					
				LOCATION	QUANTITY		FAN TAG	TYPE	φ	HP	VOLT	FLA
1	8' Nonheat	SC-111110MA	UTILITY CABINET RIGHT	FACE MOUNT LEFT	1 LIGHT	SMART CONTROLS THERMOSTATIC CONTROL W/ RELAY ON/OFF WITH SUPPLY	8' Nonheated	EXHAUST	1	0.750	115	8.9
				SIDE OF HOOD			8' Nonheated	SUPPLY	1	1.000	115	11.6
				HOOD # 1	1 FAN							



FloAire

JOB 8' Nonheated UC Right** Hood Stock	
LOCATION ,	
DATE 3/20/2023	JOB # 5910250
DWG # 13	DRAWN BY courtneyh
REV.	SCALE 3/8" = 1'-0"





FACTORY WIRING SCHEMATIC CIRCUIT BOARDS

DCV Rev. 2.14.00

HMI Rev. 2.14.00

RA-x	120 VAC RELAY	RD-x	24 VDC RELAY
NO	4 3	NO	4 3
NC	2 1	NC	2 1
COIL	8 7	COIL	8 7
COM	6 5	COM	6 5

COMPONENT LIST

LABEL	DESCRIPTION
ST-X	Starter varies
DL-X	Overload varies
C-X	Contactor varies
PS-1	Power Sup. 24VDC MDP18-24A-1C
RA-x	120V Relay DPDT 34.110.0184.0
RD-x	24VDC Light Relay 34.110.0188.0
TS-x	Duct Thermostat A/CP-PD-T4'-EXPL

LEGEND

--- FIELD WIRING

--- FACTORY WIRING

BK- BLACK YW- YELLOW

BL- BLUE GY- GREY

BR- BROWN PR- PURPLE

OR- ORANGE RD- RED

WH- WHITE GR- GREEN

DR/BL- DR/BL STRIPE

BL/RD- BL/RD STRIPE

RD/GN- RD/GN STRIPE

WH/BL- WH/BL STRIPE

JOB NAME

8' Nonheated UC ...

DRAWING TITLE

SC-111110MA

DESCRIPTION OF OPERATION

120V 1 Phase w/ control for 1 Exhaust Fan, 1 Supply Fan, Exhaust on in Fire, Lights out in Fire, Relay On/Off with Supply Fan, Fans On/Off Thermostatically Controlled. Room temperature sensor shipped loose for field installation.

JOB NO	DRAWN BY
5910250	

TYPE	DATE
FACTORY	3/20/2023

DWG NO ECP #1-2