

FOR QUESTIONS, CALL THE
FLO AIRE NATIONAL
REGION 22
PHONE: (610) 239-8405
EMAIL: courtney.hardin@floaire.com

PATENT NUMBERS

AC-PSP (UNITED STATES) - US PATENT 7963830 B2.
AC-PSP WALL (CANADA) - CA PATENT 2820509.
AC-PSP ISLAND (CANADA) - CA PATENT 2520330.

HOOD INFORMATION - JOB#5910213

| HOOD NO | TAG | MODEL | MANUFACTURER | LENGTH | MAX COOKING TEMP | TYPE | APPLIANCE DUTY | DESIGN CFM/FT | TOTAL EXH CFM | EXHAUST PLENUM | | | | | | | TOTAL SUPPLY CFM | HOOD CONSTRUCTION | HOOD CONFIG | |
|---------|--------------|-----------------|--------------|--------|------------------|------|----------------|---------------|---------------|----------------|------|--------|-----|------|------|---------|------------------|----------------------|-------------|-------|
| | | | | | | | | | | RISER(S) | | | | | | | | | END TO END | ROW |
| | | | | | | | | | | WIDTH | LENG | HEIGHT | DIA | CFM | VEL | SP | | | | |
| 1 | 6' Nonheated | 5424 FX-2-PSP-F | FLOAIRE | 6' 0' | 600 DEG | I | HEAVY | 234 | 1404 | 10' | 13' | 4' | | 1404 | 1555 | -0.852' | 1123 | 430 SS WHERE EXPOSED | ALONE | ALONE |

HOOD INFORMATION

| HOOD NO | TAG | FILTER(S) | | | | | LIGHT(S) | | | UTILITY CABINET(S) | | | | | FIRE SYSTEM PIPING | HOOD HANGING WEIGHT | |
|---------|--------------|----------------------|-----|--------|--------|------------------------|----------|----------------|------------|--------------------|-------------|-------------|------|-------------|--------------------|---------------------|----------|
| | | TYPE | QTY | HEIGHT | LENGTH | EFFICIENCY @ 7 MICRONS | QTY | TYPE | WIRE GUARD | LOCATION | SIZE | FIRE SYSTEM | | ELECTRICAL | | | SWITCHES |
| | | | | | | | | | | | | TYPE | SIZE | MODEL # | | | QUANTITY |
| 1 | 6' Nonheated | CAPTRATE SOLD FILTER | 4 | 16" | 16" | 85% SEE FILTER SPEC | 2 | L55 SERIES E26 | NO | RIGHT | 12"x54"x24" | | | SC-111110MA | 1 LIGHT 1 FAN | NO | 545 LBS |

HOOD OPTIONS

| HOOD NO | TAG | OPTION | | | | | |
|---------|--------------|--------------------------|-----|------------|-----|---------------|----------------------------|
| 1 | 6' Nonheated | RIGHT VERTICAL END PANEL | 27" | TOP WIDTH, | 21" | BOTTOM WIDTH, | 80" HIGH INSULATED 430 SS. |
| | | LEFT VERTICAL END PANEL | 27" | TOP WIDTH, | 21" | BOTTOM WIDTH, | 80" HIGH INSULATED 430 SS. |
| | | SENSOR-CV. | | | | | |

PERFORATED SUPPLY PLENUM(S)

| HOOD NO | TAG | POS | LENGTH | WIDTH | HEIGHT | TYPE | RISER(S) | | | | |
|---------|--------------|-------|--------|-------|--------|------|----------|------|-----|-----|--------|
| | | | | | | | WIDTH | LENG | DIA | CFM | SP |
| 1 | 6' Nonheated | Front | 84" | 14" | 6" | MUA | 10" | 28" | | 561 | 0.147' |
| | | | | | | MUA | 10" | 28" | | 561 | 0.147' |

SPECIFICATION: CAPTRATE® GREASE-STOP® SOLD FILTER

THE CAPTRATE GREASE-STOP SOLD FILTER IS A SINGLE-STAGE FILTER FEATURING A UNIQUE S-Baffle DESIGN IN CONJUNCTION WITH A SLOTTED REAR Baffle DESIGN, TO DELIVER EXCEPTIONAL FILTRATION EFFICIENCY.

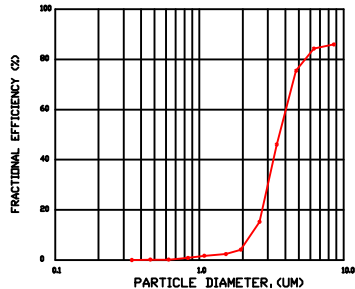
FILTER IS STAINLESS STEEL CONSTRUCTION, AND SIZED TO FIT INTO STANDARD 2-INCH DEEP HOOD CHANNEL(S).

UNITS SHALL INCLUDE STAINLESS STEEL HANDLES AND A FASTENING DEVICE TO SECURE THE TWO COMPONENTS WHEN ASSEMBLED.

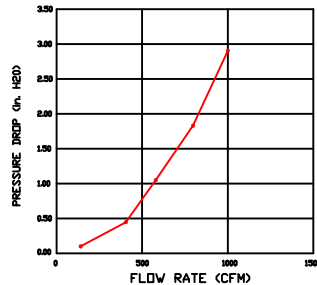
GREASE EXTRACTION EFFICIENCY PERFORMANCE SHALL REMOVE AT LEAST 75% OF GREASE PARTICLES FIVE MICRONS IN SIZE, AND 85% GREASE PARTICLES SEVEN MICRONS IN SIZE AND LARGER, WITH A CORRESPONDING PRESSURE DROP NOT TO EXCEED 1.0 INCHES OF WATER GAUGE.

THE CAPTRATE GREASE-STOP SOLD WAS TESTED TO ASTM STANDARD ASTM F2519-05. MANUFACTURER APPROVED FOR USE IN SOLID FUEL APPLICATIONS AS A SPARK ARRESTER.

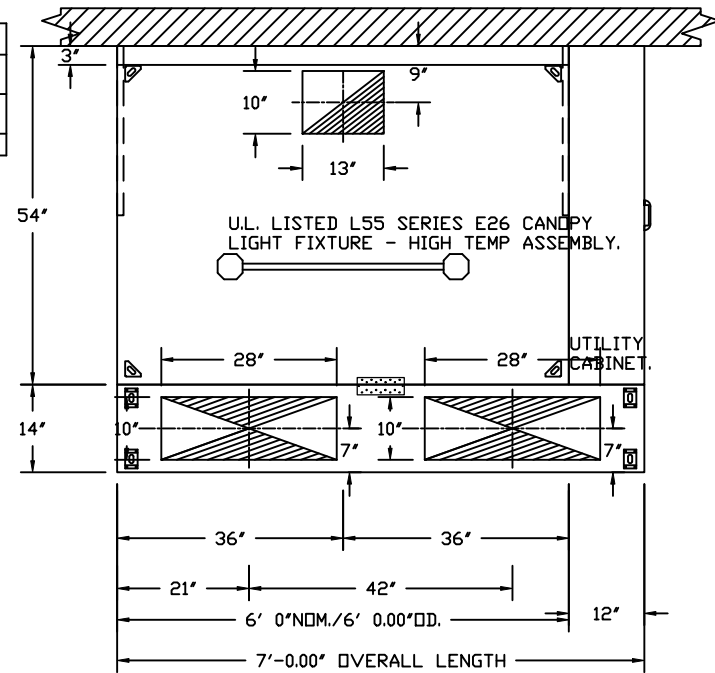
EFFICIENCY VS. PARTICLE DIAMETER



PRESSURE DROP VS. FLOW RATE



CAPTRATE FILTERS ARE BUILT IN COMPLIANCE WITH:
NFPA #96.
NSF STANDARD #2.
UL STANDARD #1046.
INT. MECH. CODE (IMC).
ULC-S649.

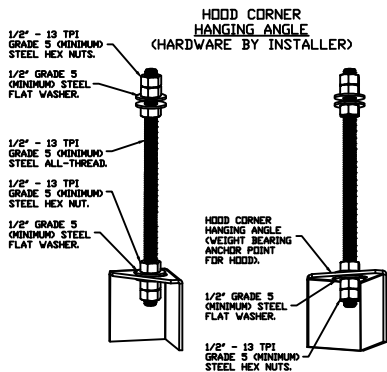


PLAN VIEW - HOOD #1 (6' Nonheated)
6' 0.00" LONG 5424FX-2-PSP-F



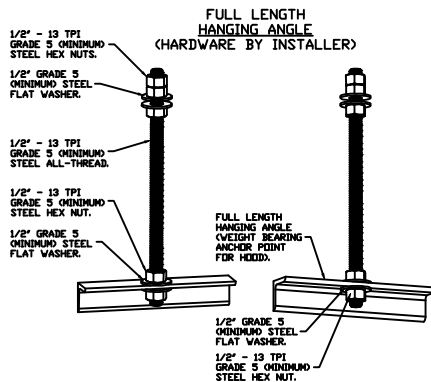
FloAire

| | |
|---|--------------------|
| JOB 6' Nonheated UC on Right** Hood Stock | |
| LOCATION , | |
| DATE 3/20/2023 | JOB # 5910213 |
| DWG # 1 | DRAWN BY courtneyh |
| REV. | SCALE 3/8" = 1'-0" |



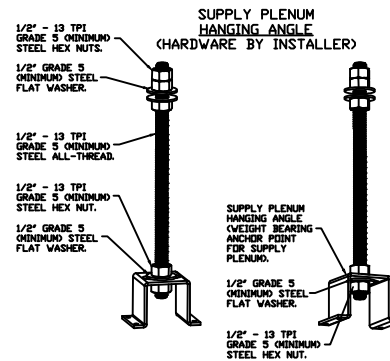
ASSEMBLY INSTRUCTIONS

HANGING ANGLE MUST BE SUPPORTED WITH 1/2" - 13 TPI GRADE 5 (MINIMUM) ALL-THREAD. SANDWICH HANGING ANGLES AND CEILING ANCHOR POINTS WITH 1/2" GRADE 5 (MINIMUM) STEEL FLAT WASHERS AND 1/2" - 13 TPI GRADE 5 (MINIMUM) HEX NUTS AS SHOWN. MUST USE DOUBLED HEX NUT CONFIGURATION BENEATH HOOD HANGING ANGLES AND ABOVE CEILING ANCHORS. MAINTAIN 1/4" OF EXPOSED THREADS BENEATH BOTTOM HEX NUT. TORQUE ALL HEX NUTS TO 57 FT-LBS.



ASSEMBLY INSTRUCTIONS

HANGING ANGLE MUST BE SUPPORTED WITH 1/2" - 13 TPI GRADE 5 (MINIMUM) ALL-THREAD. SANDWICH HANGING ANGLES AND CEILING ANCHOR POINTS WITH 1/2" GRADE 5 (MINIMUM) STEEL FLAT WASHERS AND 1/2" - 13 TPI GRADE 5 (MINIMUM) HEX NUTS AS SHOWN. MUST USE DOUBLED HEX NUT CONFIGURATION ABOVE CEILING ANCHORS. SINGLE HEX NUT BENEATH HANGING ANGLE IS ACCEPTABLE FOR FULL LENGTH HANGING ANGLES. MAINTAIN 1/4" OF EXPOSED THREADS BENEATH BOTTOM HEX NUT. TORQUE ALL HEX NUTS TO 57 FT-LBS.



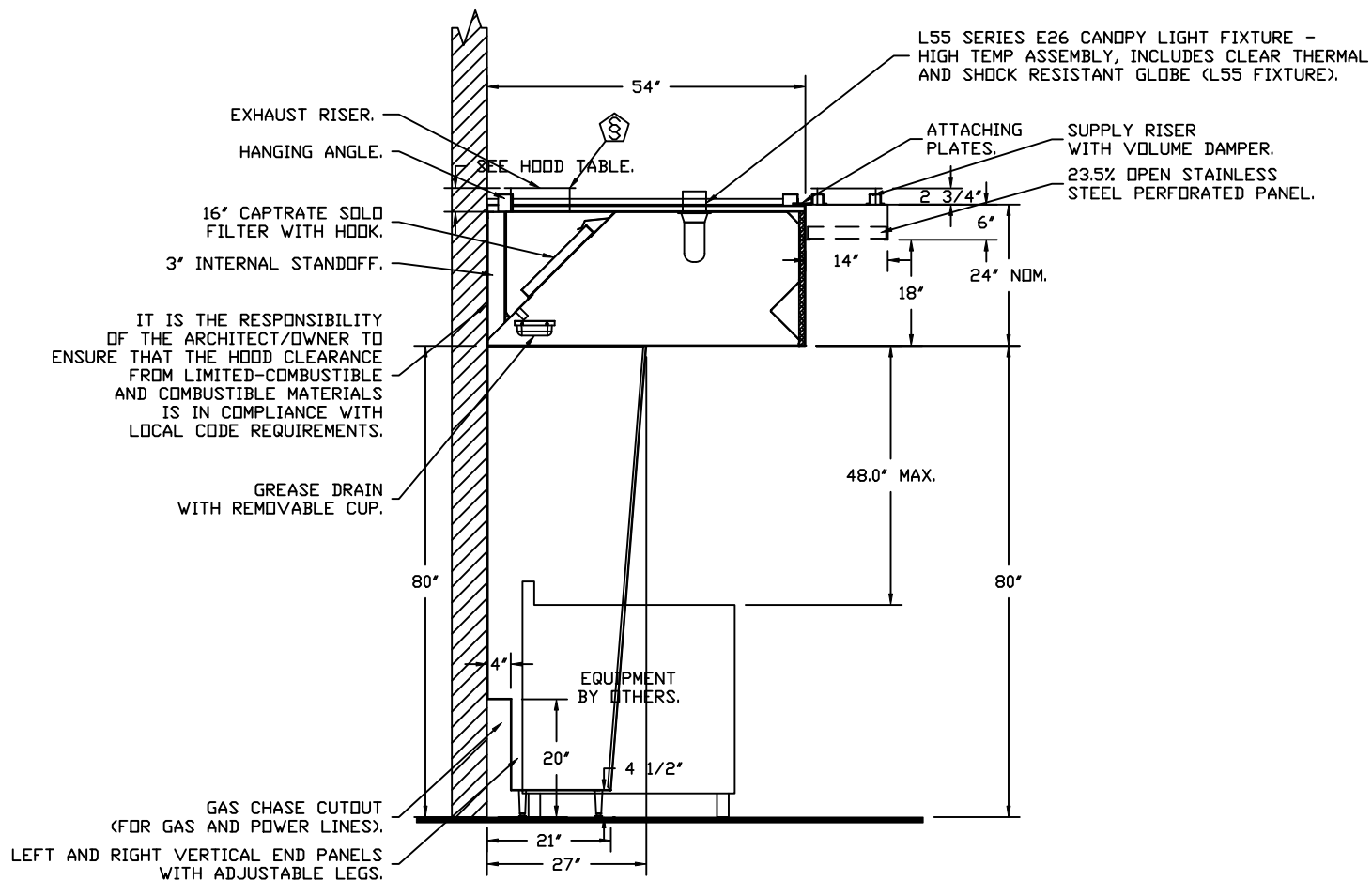
ASSEMBLY INSTRUCTIONS

HANGING ANGLE MUST BE SUPPORTED WITH 1/2" - 13 TPI GRADE 5 (MINIMUM) ALL-THREAD. SANDWICH HANGING ANGLES AND CEILING ANCHOR POINTS WITH 1/2" GRADE 5 (MINIMUM) STEEL FLAT WASHERS AND 1/2" - 13 TPI GRADE 5 (MINIMUM) HEX NUTS AS SHOWN. MUST USE DOUBLED HEX NUT CONFIGURATION ABOVE CEILING ANCHORS. SINGLE HEX NUT BENEATH HANGING ANGLE IS ACCEPTABLE FOR PSP HANGING ANGLES. MAINTAIN 1/4" OF EXPOSED THREADS BENEATH BOTTOM HEX NUT. TORQUE ALL HEX NUTS TO 57 FT-LBS.



FloAire

| | | | |
|---|-----------|----------|--------------|
| JOB 6' Nonheated UC on Right** Hood Stock | | | |
| LOCATION , | | | |
| DATE | 3/20/2023 | JOB # | 5910213 |
| DWG # | 2 | DRAWN BY | courtneyh |
| REV. | | SCALE | 3/8" = 1'-0" |



SECTION VIEW - MODEL 5424FX-2-PSP-F
HOOD - #1 (6' Nonheated)



FloAire

| | |
|---|--------------------|
| JOB 6' Nonheated UC on Right** Hood Stock | |
| LOCATION , | |
| DATE 3/20/2023 | JOB # 5910213 |
| DWG # 3 | DRAWN BY courtneyh |
| REV. | SCALE 3/8" = 1'-0" |

EXHAUST FAN INFORMATION – JOB#5910213

| FAN UNIT NO | TAG | QTY | FAN UNIT MODEL # | MANUFACTURER | CFM | ESP | RPM | MOTOR ENCL | HP | BHP | PHASE | VOLT | FLA | DISCHARGE VELOCITY | WEIGHT (LBS) | SONES |
|-------------|--------------|-----|------------------|--------------|------|-------|------|------------|-------|--------|-------|------|-----|--------------------|--------------|-------|
| 1 | 6' NONHEATED | 1 | DU85H | FLOAIRE | 1404 | 1.000 | 1247 | TEAD-ECM | 0.750 | 0.3510 | 1 | 115 | 8.9 | 444 FPM | 94 | 9.7 |

MUA FAN INFORMATION – JOB#5910213

| FAN UNIT NO | TAG | QTY | FAN UNIT MODEL # | BLOWER | HOUSING | MIN CFM | DESIGN CFM | ESP | RPM | MOTOR ENCL | HP | BHP | PHASE | VOLT | FLA | MCA | MOCF | WEIGHT (LBS) | SONES |
|-------------|--------------|-----|------------------|--------|---------|---------|------------|-------|-----|------------|-------|--------|-------|------|------|-------|------|--------------|-------|
| 2 | 6' NONHEATED | 1 | SA10 | G10D | A1 | - | 1123 | 0.250 | 607 | TEAD-ECM | 1.000 | 0.1780 | 1 | 115 | 11.6 | 15.6A | 25A | 244 | 8.9 |

FAN OPTIONS

| FAN UNIT NO | TAG | QTY | DESCRIPTION |
|-------------|--------------|-----|--|
| 1 | 6' NONHEATED | 1 | GREASE BOX |
| | | 1 | HINGE KIT – SHIPS LOOSE FOR CURB SUPPLIED BY OTHERS |
| | | 1 | ECM WIRING PACKAGE – EXHAUST – MODBUS CONTROL –MSC- (TELCD), CCW ROTATION |
| | | 1 | 2 YEAR PARTS WARRANTY |
| 2 | 6' NONHEATED | 1 | MOTORIZED BACKDRAFT DAMPER FOR SIZE 1 HOUSING – MEETS AMCA CLASS 1A RATING |
| | | 1 | SIZE 1 UNTEMPERED COMMERCIAL DOWN DISCHARGE FOR DIRECT DRIVE AHUS |
| | | 1 | ECM WIRING PACKAGE-SUPPLY – MODBUS CONTROL –MSC- (TELCD), CW ROTATION |
| | | 1 | 2 YEAR PARTS WARRANTY |

FAN ACCESSORIES

| FAN UNIT NO | TAG | EXHAUST | | | SUPPLY | | | |
|-------------|--------------|------------|----------------|------------|----------------|----------------|------------------|------------|
| | | GREASE CUP | GRAVITY DAMPER | WALL MOUNT | SIDE DISCHARGE | GRAVITY DAMPER | MOTORIZED DAMPER | WALL MOUNT |
| 1 | 6' NONHEATED | YES | | | | | | |
| 2 | 6' NONHEATED | | | | | | YES | |

CURB ASSEMBLIES

| NO | ON FAN | TAG | WEIGHT | ITEM | SIZE |
|----|--------|--------------|--------|------|--|
| 1 | # 1 | 6' NONHEATED | 32 LBS | CURB | 23.000"W X 23.000"L X 20.000"H ALONG LENGTH, RIGHT VENTED. |
| 2 | # 2 | 6' NONHEATED | 29 LBS | CURB | 21.000"W X 21.000"L X 20.000"H ALONG LENGTH, RIGHT. |

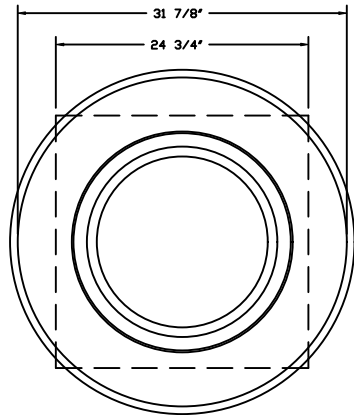
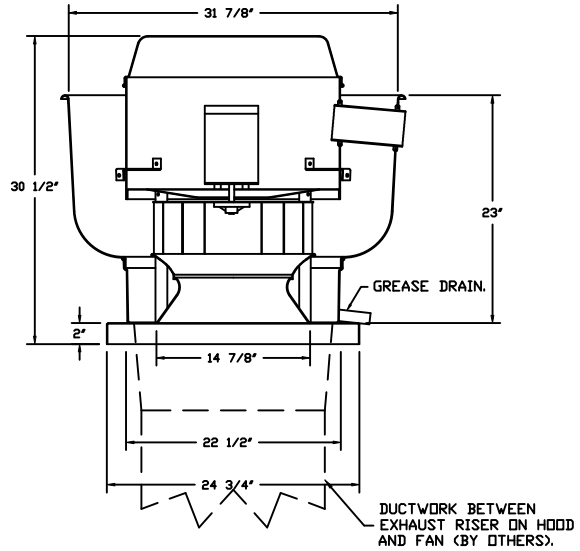
FAN SOUND DATA

| FAN UNIT NO | TAG | MOTOR | SOUND DATA | | | OCTAVE BAND SOUND DATA | | | | | | | | |
|-------------|--------------|---------|------------|------------------|------------|------------------------|-------|--------|--------|--------|-------|-------|-------|-------|
| | | | LWA | SONES @ 5 FT | DBA @ 5 FT | DISTANCE (FT) | 63 HZ | 125 HZ | 250 HZ | 500 HZ | 1 KHZ | 2 KHZ | 4 KHZ | 8 KHZ |
| 1 | 6' NONHEATED | EXHAUST | 72.2 | 9.65916887418369 | 60.7 | 5 | 74 | 75 | 75.5 | 68.6 | 65.9 | 63 | 57.7 | 51.7 |
| 2 | 6' NONHEATED | SUPPLY | 71 | 8.8878185719947 | 59.5 | 5 | 71.6 | 70.7 | 68.5 | 66.2 | 67.3 | 63.2 | 59.5 | 56.5 |



| | |
|---|--------------------|
| JOB 6' Nonheated UC on Right** Hood Stock | |
| LOCATION , | |
| DATE 3/20/2023 | JOB # 5910213 |
| DWG # 4 | DRAWN BY courtneyh |
| REV. | SCALE 3/8" = 1'-0" |

FAN #1 DU85H - EXHAUST FAN (6' NONHEATED)



TOP VIEW

FEATURES:

- DIRECT DRIVE CONSTRUCTION (NO BELTS/PULLEYS).
- ROOF MOUNTED FANS.
- RESTAURANT MODEL.
- UL705 AND UL762 AND ULC-S645
- VARIABLE SPEED CONTROL.
- INTERNAL WIRING.
- THERMAL OVERLOAD PROTECTION (SINGLE PHASE).
- HIGH HEAT OPERATION 300°F (149°C).
- GREASE CLASSIFICATION TESTING.
- NEMA 3R SAFETY DISCONNECT SWITCH.

NORMAL TEMPERATURE TEST

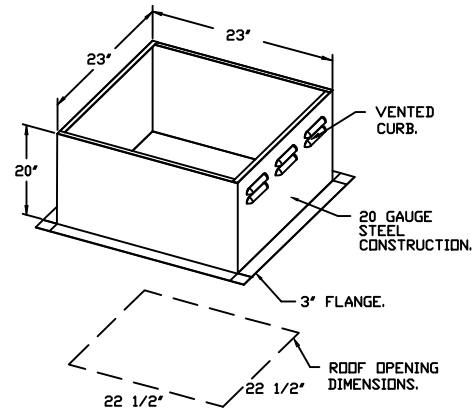
EXHAUST FAN MUST OPERATE CONTINUOUSLY WHILE EXHAUSTING AIR AT 300°F (149°C) UNTIL ALL FAN PARTS HAVE REACHED THERMAL EQUILIBRIUM, AND WITHOUT ANY DETERIORATING EFFECTS TO THE FAN WHICH WOULD CAUSE UNSAFE OPERATION.

ABNORMAL FLARE-UP TEST

EXHAUST FAN MUST OPERATE CONTINUOUSLY WHILE EXHAUSTING BURNING GREASE VAPORS AT 600°F (316°C) FOR A PERIOD OF 15 MINUTES WITHOUT THE FAN BECOMING DAMAGED TO ANY EXTENT THAT COULD CAUSE AN UNSAFE CONDITION.

OPTIONS

- GREASE BOX.
- HINGE KIT - SHIPS LOOSE FOR CURB SUPPLIED BY OTHERS.
- ECM WIRING PACKAGE - EXHAUST - MODBUS CONTROL
- MSC- (TELCO), CCW ROTATION.
- 2 YEAR PARTS WARRANTY.

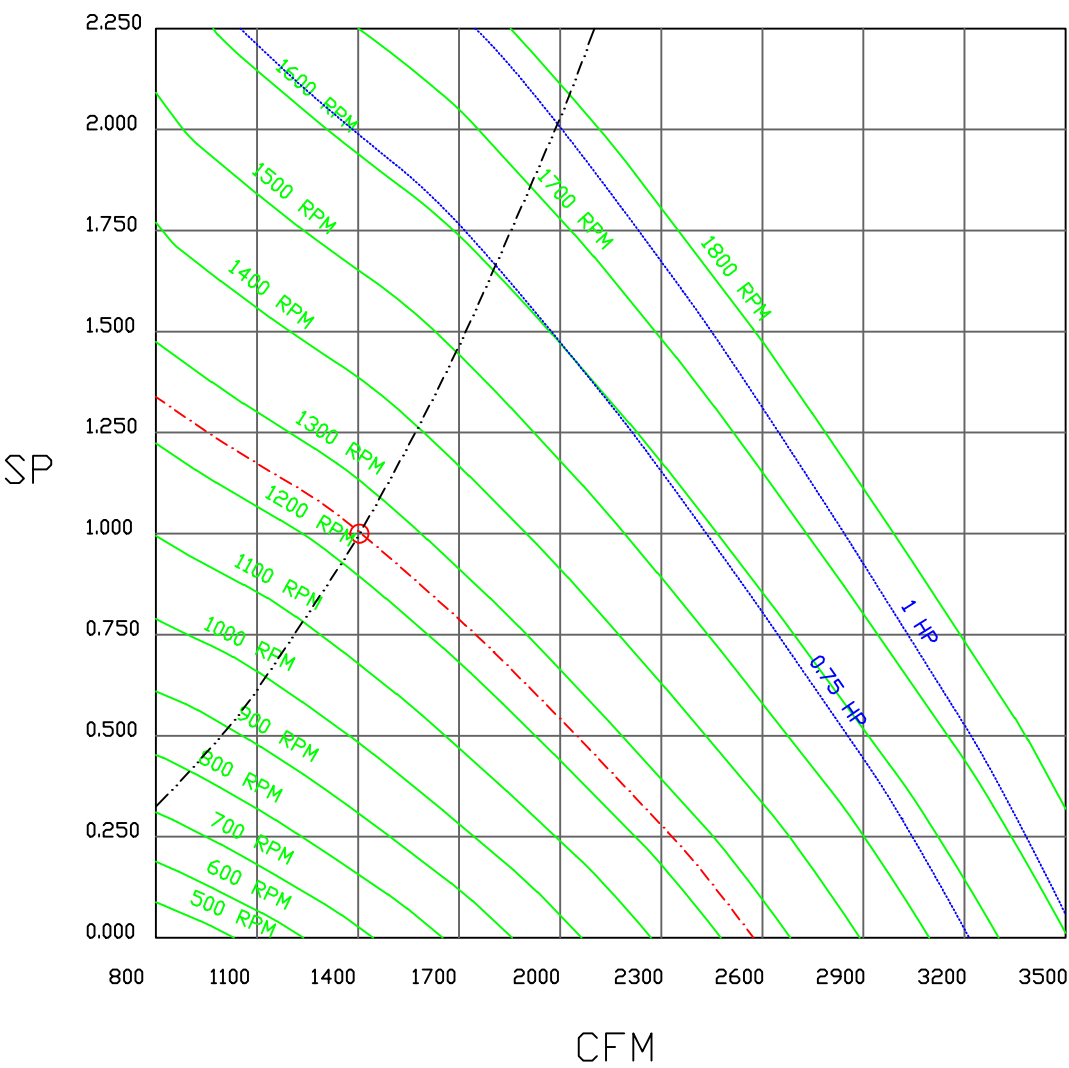


FloAire

| | |
|---|----------------------------------|
| <i>JOB</i> 6' Nonheated UC on Right** Hood Stack | |
| <i>LOCATION</i> , | |
| <i>DATE</i> 3/20/2023 | <i>JOB #</i> 5910213 |
| <i>DWG #</i> 5 | <i>DRAWN BY</i> courtneyh |
| <i>REV.</i> | <i>SCALE</i> 3/8" = 1'-0" |

FAN#1 (6' NONHEATED) - EXHAUST PERFORMANCE CURVES.

1404 CFM, 1 SP @ 1247 RPM AND 0.351 BHP AT 0 FEET AND 120 DEG F.
* PLEASE NOTE THAT THESE CURVES WERE ADJUSTED FOR JOB SPECIFIC TEMPERATURE AND ALTITUDE.



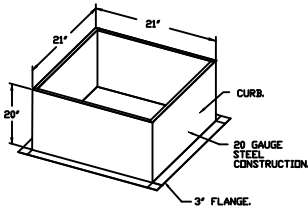
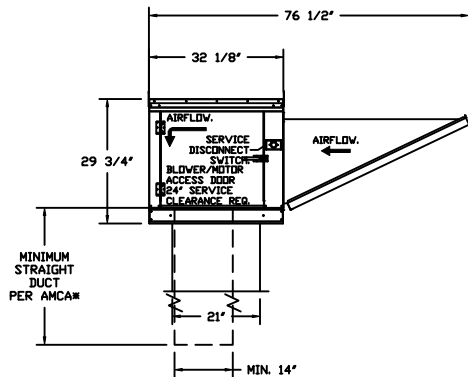
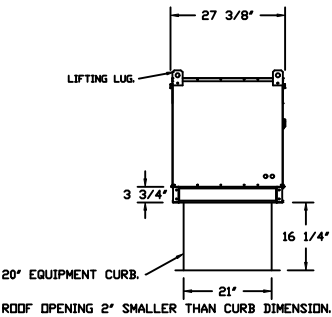
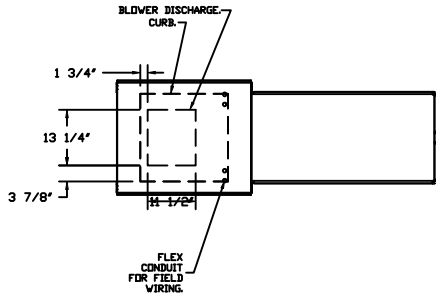


FloAire

| | |
|---|--------------------|
| JOB 6' Nonheated UC on Right** Hood Stock | |
| LOCATION , | |
| DATE 3/20/2023 | JOB # 5910213 |
| DWG # 6 | DRAWN BY courtneyh |
| REV. | SCALE 3/8" = 1'-0" |

- FAN #2 SA10D - SUPPLY FAN (6' NONHEATED)
1. DIRECT DRIVE UNTEMPERED SUPPLY UNIT WITH 10" BLOWER IN SIZE #1 HOUSING WITH SPEED CONTROL, DISCONNECT SWITCH.
 2. INTAKE HOOD WITH EZ FILTERS.
 3. DOWN DISCHARGE - AIR FLOW RIGHT -> LEFT.
 4. MOTORIZED BACK DRAFT DAMPER 16" X 18" FOR SIZE 1 UNTEMPERED UNITS W/EXTENDED SHAFT, STANDARD GALVANIZED CONSTRUCTION, 3/4" REAR FLANGE, LOW LEAKAGE, TFB120S ACTUATOR INCLUDED.
 5. DOWN DISCHARGE CONSTRUCTION FOR SIZE 1 UNTEMPERED DIRECT DRIVE AHUS.
 6. ECM WIRING PACKAGE MODBUS CONTROL FOR SUPPLY EC MOTORS. MSC CONTROLLER. ***DO NOT ORDER UNDER WARRANTY, SEE PART NUMBER *CAS MSC**.
 7. HINGED DOUBLE WALL INSULATED DOOR ASSEMBLY (BURNER/BLOWER SECTION).
 8. 2 YEAR PARTS WARRANTY

NOTE: SUPPLY DUCT MUST BE INSTALLED TO MEET SMACNA STANDARDS. A MINIMUM STRAIGHT DUCT LENGTH MUST BE MAINTAINED DOWNSTREAM OF UNIT DISCHARGE AS OUTLINED IN AMCA PUBLICATION 201. WHEN USING RECTANGULAR DUCTWORK, ELBOWS MUST BE RADIUS THROAT, RADIUS BACK WITH TURNING VANES. FLEXIBLE DUCTWORK AND SQUARE THROAT/SQUARE BACK ELBOWS SHOULD NOT BE USED. ANY TRANSITION AND/OR TURNS IN THE DUCTWORK WILL CAUSE SYSTEM EFFECT. SYSTEM EFFECT WILL DRASTICALLY INCREASE STATIC PRESSURE AND REDUCE AIRFLOW. DO NOT RELY ON UNIT TO SUPPORT DUCT IN ANY WAY. FAILURE TO PROPERLY SIZE DUCTWORK MAY CAUSE SYSTEM EFFECTS AND REDUCE PERFORMANCE OF THE EQUIPMENT. SUGGESTED STRAIGHT DUCT SIZE IS 14" x 14".

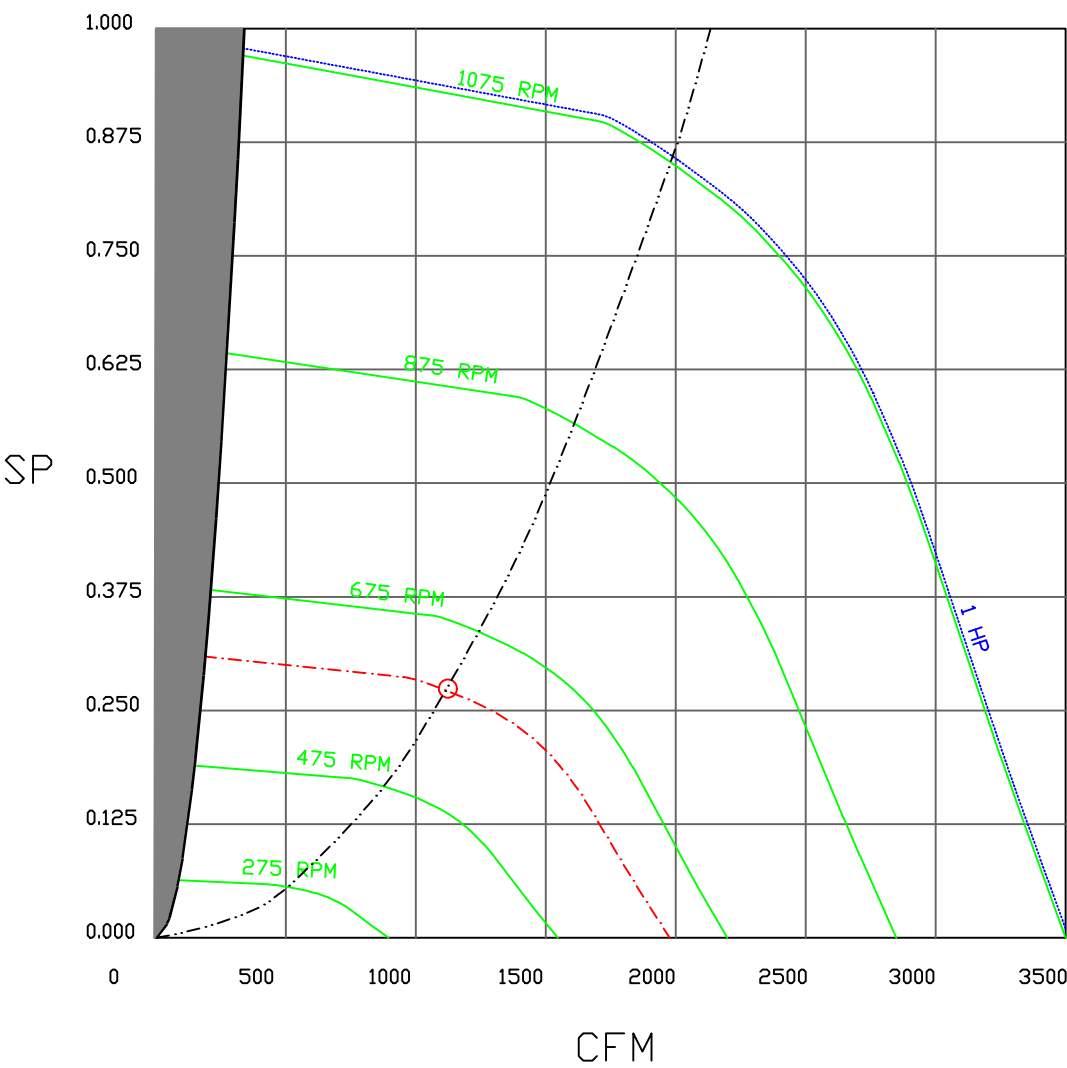


FloAire

| | |
|---|--------------------|
| JOB 6' Nonheated UC on Right** Hood Stock | |
| LOCATION , | |
| DATE 3/20/2023 | JOB # 5910213 |
| DWG # 7 | DRAWN BY courtneyh |
| REV. | SCALE 1/4" = 1'-0" |

FAN#2 (6' NONHEATED) - SUPPLY PERFORMANCE CURVES.

1123 CFM, 0.274 SP @ 607 RPM AND 0.178 BHP AT 0 FEET AND 70 DEG F.
* PLEASE NOTE THAT THESE CURVES WERE ADJUSTED FOR JOB SPECIFIC TEMPERATURE AND ALTITUDE.





GREASE DUCT & CHIMNEY SPECIFICATIONS:

PROVIDE GREASE DUCT EQUAL TO FLOAIRE MODEL "FDW"
ROUND 20 GAUGE 430 STAINLESS STEEL DUCTWORK. MODEL "FDW"
IS LISTED TO UL-1978 AND IS INSTALLED USING "V" CLAMP LOCKING
CONNECTIONS SEALED WITH 3M FIRE BARRIER 2000 PLUS. MODEL "FDW"
DOES NOT REQUIRE WELDING PROVIDING IT HAS BEEN INSTALLED PER
THE MANUFACTURES INSTALLATION GUIDE.

PROVIDE RATED ACCESS DOORS AT EVERY CHANGE IN DIRECTION AND EVERY 12' ON CENTER.
PER MANUFACTURES LISTING MODEL "FDW" HORIZONTAL RUNS LESS THAN 75 FT. CAN BE
SLOPED 1/16" PER 12", HORIZONTAL RUNS MORE THAN 75 FT. CAN BE SLOPED 3/16" PER 12".
DUCT SHOULD BE SLOPED AS MUCH AS POSSIBLE TO REDUCE THE CHANCE OF GREASE
ACCUMULATION IN HORIZONTAL RUNS.

IF THE DUCT OR CHIMNEY IS WITHIN 18 INCHES OF COMBUSTIBLE MATERIAL, PROVIDE
UL-2221 OR UL-103 HT LISTED DOUBLE WALL GREASE DUCT OR DOUBLE WALL CHIMNEY
EQUAL TO FLOAIRE MODEL "FDW- 2R, 2R TYPE HT, 3R, OR 3Z" ROUND 20 GAUGE 430
STAINLESS INNER DUCT INSULATED WITH A 24 GAUGE 430 STAINLESS OUTER SHELL.

CUSTOMER APPROVAL TO MANUFACTURE:

| | |
|----------------------------------|--------------------------|
| APPROVED AS NOTED | <input type="checkbox"/> |
| APPROVED WITH NO EXCEPTION TAKEN | <input type="checkbox"/> |
| REVISE AND RESUBMIT | <input type="checkbox"/> |
| SIGNATURE _____ | |
| YOUR TITLE _____ DATE _____ | |



FloAire

| | | | |
|---|-----------|----------|--------------|
| JOB 6' Nonheated UC on Right** Hood Stock | | | |
| LOCATION , | | | |
| DATE | 3/20/2023 | JOB # | 5910213 |
| DWG # | 9 | DRAWN BY | courtneyh |
| REV. | | SCALE | 3/8" = 1'-0" |

GREASE BOX INSTALLATION

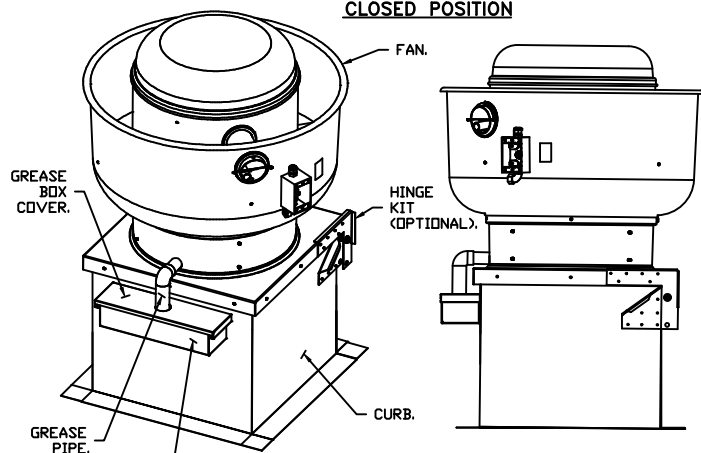
PARTS INCLUDED

GREASE BOX.
GREASE BOX COVER.
GREASE PIPE.

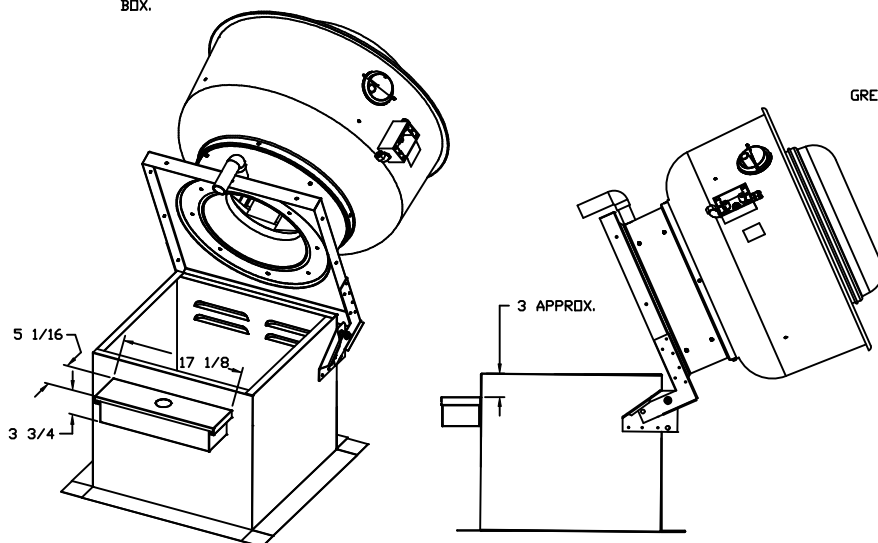
SHEET METAL SCREWS
3 - LONG (3/4" LG.).

GREASEBOX
REV.#2 08/19/02

CLOSED POSITION



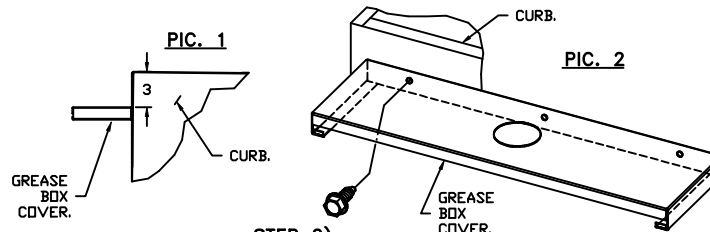
OPEN POSITION



GREASE BOX FIELD INSTALLATION

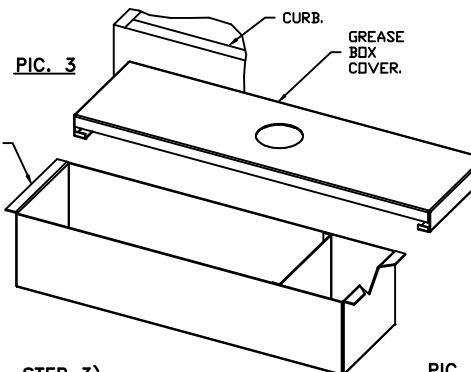
STEP 1)

ATTACH GREASE BOX COVER TO THE CURB,
HOLD 3" DIMENSION AS SHOWN ON PIC. 1.
SCREW GREASE BOX COVER TO CURB USING (3) LONG (3/4" LG.)
SCREWS AS SHOWN ON PIC. 2.



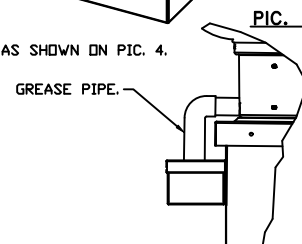
STEP 2)

ATTACH GREASE BOX TO GREASE BOX COVER, SLIDE AND DROP.
AS SHOWN ON PIC. 3.



STEP 3)

INSTALL GREASE PIPE AS SHOWN ON PIC. 4.



*NOTE: UL 705 INSTALL.



FloAire

| | | | |
|---|-----------|----------|--------------|
| JOB 6' Nonheated UC on Right** Hood Stock | | | |
| LOCATION , | | | |
| DATE | 3/20/2023 | JOB # | 5910213 |
| DWG # | 10 | DRAWN BY | courtneyh |
| REV. | | SCALE | 3/8" = 1'-0" |

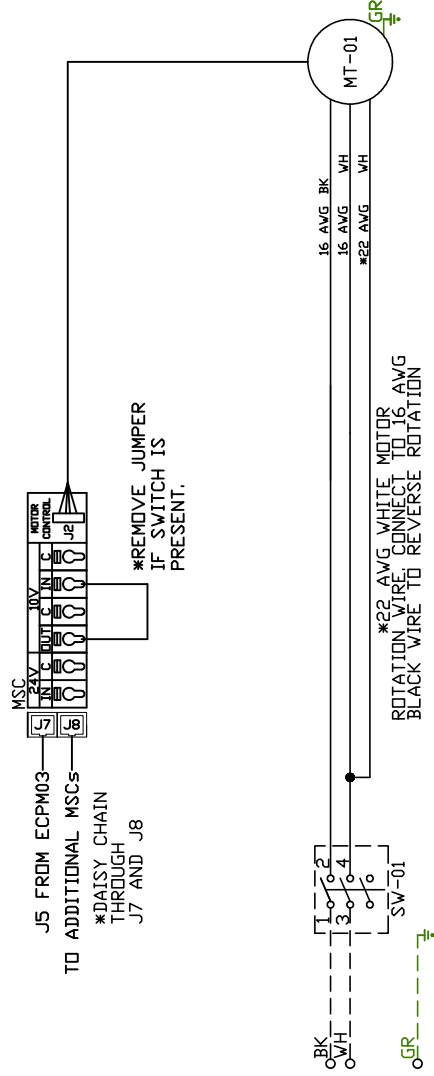
Exhaust Fan Wiring

JOB 5910213 - 6' Nonheated UC on Right** Ho...

DRAWING NUMBER
EXH5910213-1

SHIP DATE 3/20/2023

MODEL DU85H



Installed Options

| Label | Component Description | Location |
|-------|------------------------|----------|
| MT-01 | Fan Motor | [3] |
| MSC | Motor Speed Controller | [1] |
| SW-01 | Main disconnect switch | [3] |

| | |
|---------|--|
| EXHAUST | <u>MOTOR INFO</u> 0.75HP-115V-1P-8.9FLA |
|---------|--|

ELECTRICAL INFORMATION
MOTOR/CTRL MCA: 11.2A
MOTOR/CTRL MOP: 20A

| NOTES | |
|-------|-------------------------|
| --- | DENOTES FIELD WIRING |
| --- | DENOTES INTERNAL WIRING |

WIRE COLOR

NAME _____

| | | | | | |
|----|---|--------|----|---|--------|
| BK | - | BLACK | YW | - | YELLOW |
| BL | - | BLUE | GR | - | GREEN |
| BR | - | BROWN | GY | - | GRAY |
| OR | - | ORANGE | PR | - | PURPLE |
| RD | - | RED | PK | - | PINK |
| WH | - | WHITE | | | |

AirHandler Wiring

JOB 5910213 - 6' Nonheated UC on Right** Ho...

DRAWING NUMBER A5910213-2

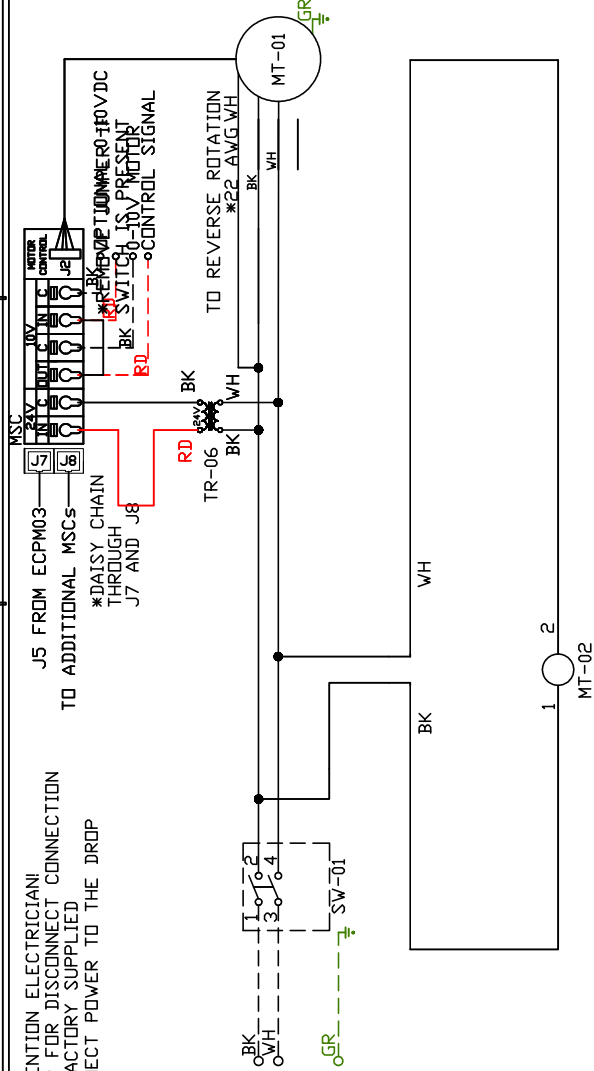
SHIP DATE 3/20/2023

MODEL SAI0

ATTENTION ELECTRICIAN!
DROP FOR DISCONNECT CONNECTION
IS FACTORY SUPPLIED
CONNECT POWER TO THE DROP

J5 FROM ECPW03
TO ADDITIONAL MSCs

*DAISY CHAIN
THROUGH
J7 AND J8



Installed Options
Motorized Back Draft Damper

Component Identification
Label Description Location

MT-01 Supply motor [2]
MT-02 Damper motor [5]

MSC Motor Speed Controller [1]

SW-01 Main disconnect switch [2]

TR-06 24VAC 20VA Transformer[1]

SUPPLY MOTOR INFO
1HP-115V-IP-11.6FLA

ELECTRICAL INFORMATION
MOTOR/CTRL CIRCUIT MCA: 15.6A
MOTOR/CTRL CIRCUIT MOP: 25A

NOTES
- - - - - DENOTES FIELD WIRING
_____ DENOTES INTERNAL WIRING

WIRE COLOR

BK - BLACK YW - YELLOW
BL - BLUE GR - GREEN
BR - BROWN GY - GRAY
OR - ORANGE PR - PURPLE
RD - RED PK - PINK
WH - WHITE

ELECTRICAL PACKAGE - JOB#5910213

| NO | TAG | PACKAGE # | LOCATION | SWITCHES | | OPTION | FANS CONTROLLED | | | | | |
|----|------------|-------------|-----------------------|-----------------|----------|--|-----------------|---------|---|-------|------|------|
| | | | | LOCATION | QUANTITY | | FAN TAG | TYPE | Ø | HP | VOLT | FLA |
| 1 | 6' Nonheat | SC-111110MA | UTILITY CABINET RIGHT | FACE MOUNT LEFT | 1 LIGHT | SMART CONTROLS THERMOSTATIC CONTROL W/ RELAY ON/OFF WITH SUPPLY | 6' Nonheated | EXHAUST | 1 | 0.750 | 115 | 8.9 |
| | | | | SIDE OF HOOD | | | 6' Nonheated | SUPPLY | 1 | 1.000 | 115 | 11.6 |
| | | | | HOOD # 1 | 1 FAN | | | | | | | |



FloAire

| | |
|---|--------------------|
| JOB 6' Nonheated UC on Right** Hood Stock | |
| LOCATION , | |
| DATE 3/20/2023 | JOB # 5910213 |
| DWG # 13 | DRAWN BY courtneyh |
| REV. | SCALE 3/8" = 1'-0" |

JOB NO
5910213

MODEL NUMBER
SC-111110MA

JOB NAME
6' Nonheated UC on Right*** Ho...

DRAWN BY

DATE
3/20/2023

SCHEMATIC TYPE

INSTALL
DWG NO
ECP #1-1

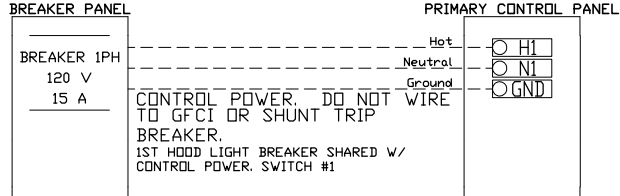
DESCRIPTION OF OPERATION:

120V 1 Phase w/ control for 1 Exhaust Fan, 1 Supply Fan, Exhaust on In Fire, Lights out in Fire, Relay On/Off with Supply Fan, Fan(s) On/Off Thermostatically Controlled. Room temperature sensor shipped loose for field installation.

BREAKER PANEL TO PRIMARY CONTROL PANEL

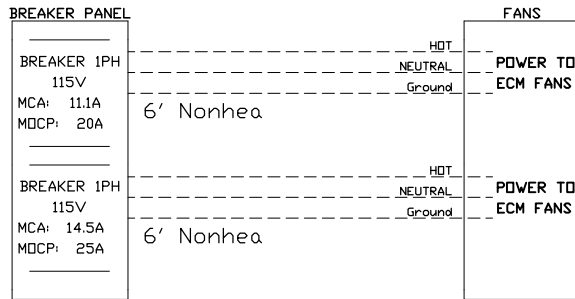
Responsibility: Electrician

BREAKER SIZE SHOWN IS THE MAXIMUM ALLOWED



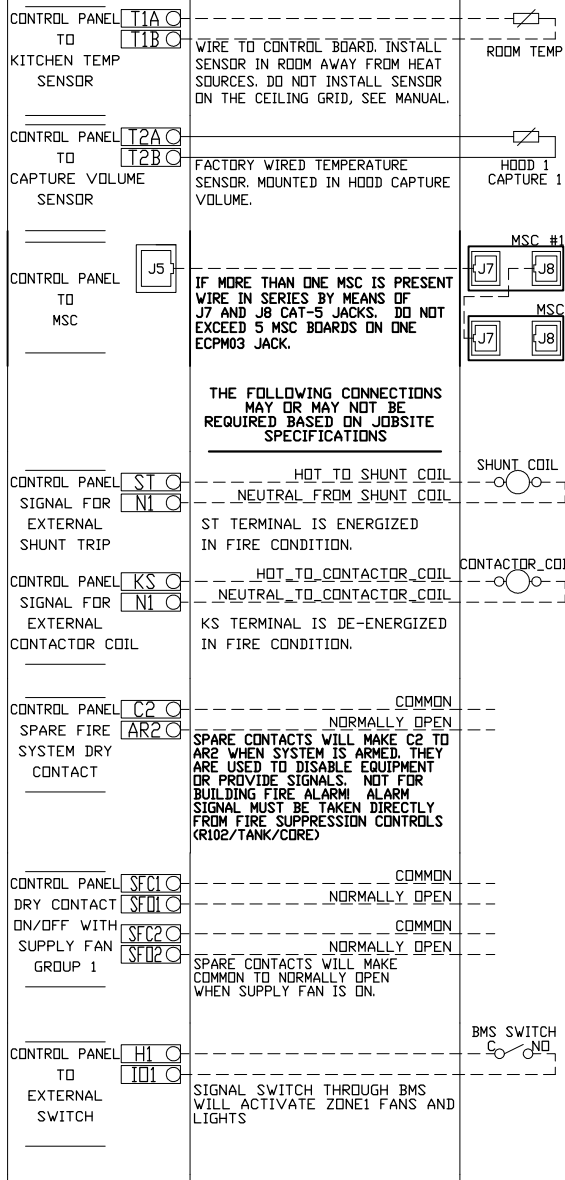
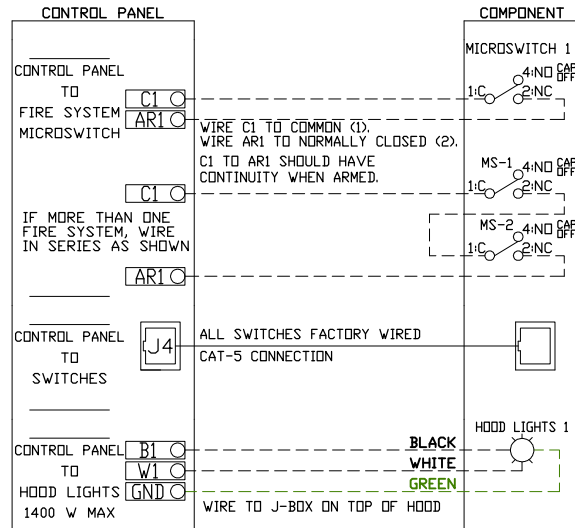
BREAKER PANEL TO FANS

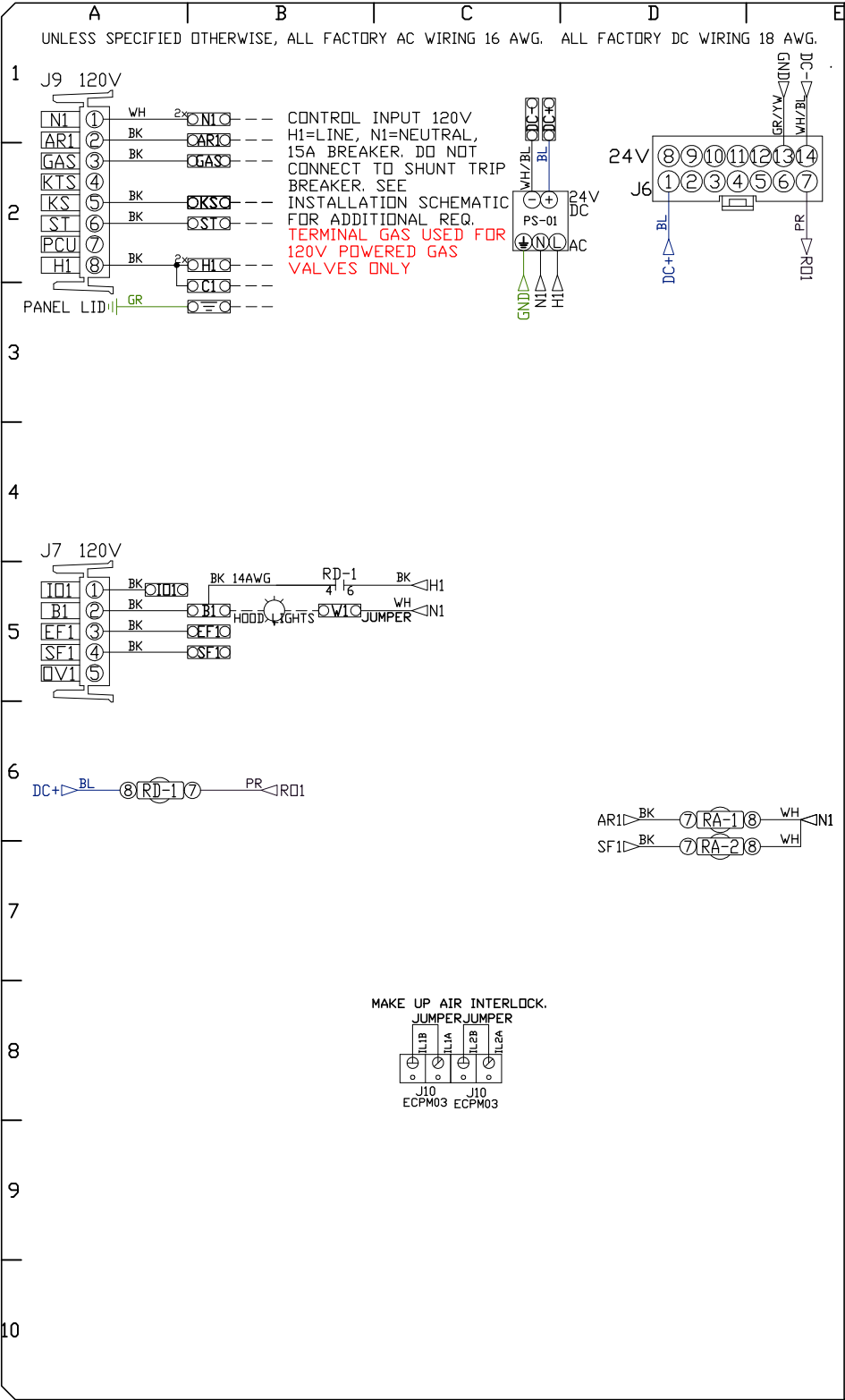
Responsibility: Electrician



CONTROL PANEL TO ACCESSORY ITEMS

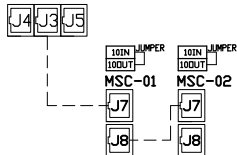
Responsibility: Electrician





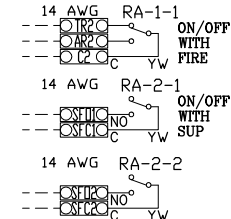
NOTE: All items on ECPM03 J3 line to be daisy chained from one component to the next, with EOL120A at end of line. Place PN: EOL120A in empty RJ45 port.

ECPM03/DAISY CHAIN



MOTOR POWER CIRCUIT

DRY CONTACTS (SHOWN DE-ENERGIZED)



FACTORY WIRING SCHEMATIC CIRCUIT BOARDS
DCV Rev. 2.14.00
HMI Rev. 2.14.00

| RA-x | 120 VAC RELAY | RD-x | 24 VDC RELAY |
|------|---------------|------|--------------|
| NO | 4 3 | NO | 4 3 |
| NC | 2 1 | NC | 2 1 |
| COIL | 8 7 | COIL | 8 7 |
| COM | 6 5 | COM | 6 5 |

COMPONENT LIST

| LABEL | DESCRIPTION |
|-------|----------------------------------|
| ST-X | Starter varies |
| DL-X | Overload varies |
| C-X | Contactor varies |
| PS-1 | Power Sup. 24VDC MDP18-24A-1C |
| RA-x | 120V Relay DPDT 34.110.0184.0 |
| RD-x | 24VDC Light Relay 34.110.0188.0 |
| TS-x | Duct Thermostat A/CP-PD-T4'-EXPL |

LEGEND
--- FIELD WIRING
--- FACTORY WIRING
BK- BLACK YW- YELLOW
BL- BLUE GY- GREY
BR- BROWN PR- PURPLE
OR- ORANGE RD- RED
WH- WHITE GR- GREEN
DR/BL- DR/BL STRIPE
BL/RD- BL/RD STRIPE
RD/GN- RD/GN STRIPE
WH/BL- WH/BL STRIPE

JOB NAME
6" Nonheated UC ...
DRAWING TITLE
SC-111110MA
DESCRIPTION OF OPERATION
120V 1 Phase w/ control for 1 Exhaust Fan, 1 Supply Fan, Exhaust on in Fire, Lights out in Fire, Relay On/Off with Supply Fan, Fans On/Off Thermostatically Controlled. Room temperature sensor shipped loose for field installation.

| JOB NO | DRAWN BY |
|---------|----------|
| 5910213 | |

| TYPE | DATE |
|---------|-----------|
| FACTORY | 3/20/2023 |

DWG NO ECP #1-2