

FOR QUESTIONS, CALL THE
FLO AIRE NATIONAL
REGION 22
PHONE: (610) 239-8405
EMAIL: courtney.hardin@floaire.com

PATENT NUMBERS
AC-PSP (UNITED STATES) - US PATENT 7963830 B2.
AC-PSP WALL (CANADA) - CA PATENT 2820509.
AC-PSP ISLAND (CANADA) - CA PATENT 2520330.

HOOD INFORMATION - JOB#5910183

HOOD NO	TAG	MODEL	MANUFACTURER	LENGTH	MAX COOKING TEMP	TYPE	APPLIANCE DUTY	DESIGN CFM/FT	TOTAL EXH CFM	EXHAUST PLENUM						TOTAL SUPPLY CFM	HOOD CONSTRUCTION	HOOD CONFIG		
										RISER(S)								END TO END	ROW	
										WIDTH	LENG	HEIGHT	DIA	CFM	VEL					SP
1	6' Heated	5424 FX-2-PSP-F	FLOAIRE	6' 0"	600 DEG	I	HEAVY	234	1404	10"	13"	4'		1404	1555	-0.852"	1123	430 SS WHERE EXPOSED	ALONE	ALONE

HOOD INFORMATION

HOOD NO	TAG	FILTER(S)					LIGHT(S)			UTILITY CABINET(S)					FIRE SYSTEM PIPING	HOOD HANGING WEIGHT	
		TYPE	QTY	HEIGHT	LENGTH	EFFICIENCY @ 7 MICRONS	QTY	TYPE	WIRE GUARD	LOCATION	SIZE	FIRE SYSTEM		ELECTRICAL			SWITCHES
												TYPE	SIZE	MODEL #			QUANTITY
1	6' Heated	CAPTRATE SOLD FILTER	4	16"	16"	85% SEE FILTER SPEC	2	L55 SERIES E26	NO	LEFT	12"x54"x24"			SC-111110MA	1 LIGHT 1 FAN	NO	545 LBS

HOOD OPTIONS

HOOD NO	TAG	OPTION					
1	6' Heated	RIGHT VERTICAL END PANEL	27'	TOP WIDTH,	21'	BOTTOM WIDTH,	80' HIGH INSULATED 430 SS.
		LEFT VERTICAL END PANEL	27'	TOP WIDTH,	21'	BOTTOM WIDTH,	80' HIGH INSULATED 430 SS.
		SENSOR-CV.					

PERFORATED SUPPLY PLENUM(S)

HOOD NO	TAG	POS	LENGTH	WIDTH	HEIGHT	TYPE	RISER(S)				
							WIDTH	LENG	DIA	CFM	SP
1	6' Heated	Front	84'	14'	6'	MUA	10"	28"		561	0.147"
						MUA	10"	28"		561	0.147"

SPECIFICATION: CAPTRATE® GREASE-STOP® SOLD FILTER

THE CAPTRATE GREASE-STOP SOLD FILTER IS A SINGLE-STAGE FILTER FEATURING A UNIQUE S-Baffle DESIGN IN CONJUNCTION WITH A SLOTTED REAR Baffle DESIGN, TO DELIVER EXCEPTIONAL FILTRATION EFFICIENCY.

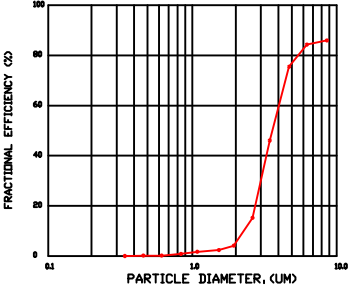
FILTER IS STAINLESS STEEL CONSTRUCTION, AND SIZED TO FIT INTO STANDARD 2-INCH DEEP HOOD CHANNEL(S).

UNITS SHALL INCLUDE STAINLESS STEEL HANDLES AND A FASTENING DEVICE TO SECURE THE TWO COMPONENTS WHEN ASSEMBLED.

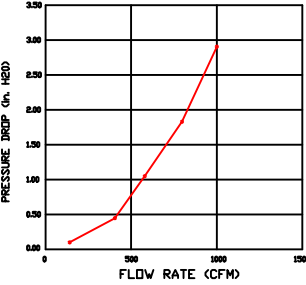
GREASE EXTRACTION EFFICIENCY PERFORMANCE SHALL REMOVE AT LEAST 75% OF GREASE PARTICLES FIVE MICRONS IN SIZE, AND 85% GREASE PARTICLES SEVEN MICRONS IN SIZE AND LARGER, WITH A CORRESPONDING PRESSURE DROP NOT TO EXCEED 1.0 INCHES OF WATER GAUGE.

THE CAPTRATE GREASE-STOP SOLD WAS TESTED TO ASTM STANDARD ASTM F2519-05. MANUFACTURER APPROVED FOR USE IN SOLID FUEL APPLICATIONS AS A SPARK ARRESTER.

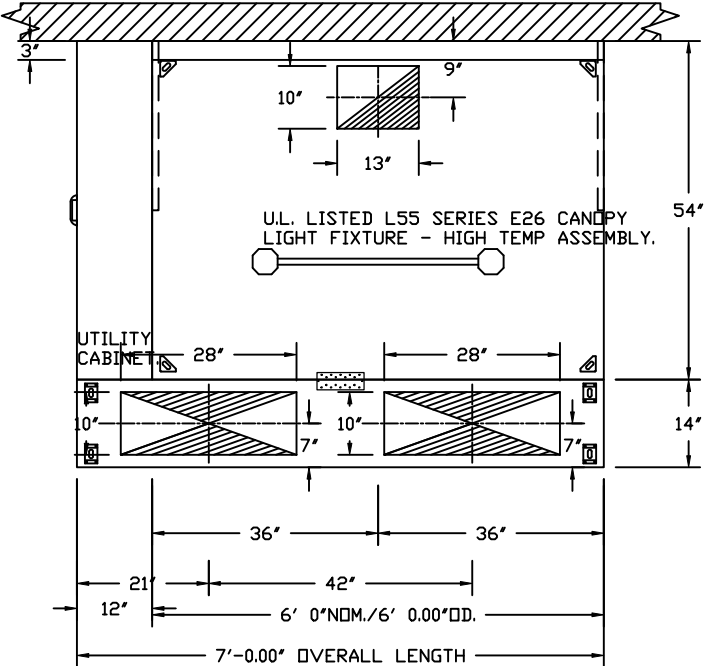
EFFICIENCY VS. PARTICLE DIAMETER



PRESSURE DROP VS. FLOW RATE



CAPTRATE FILTERS ARE BUILT IN COMPLIANCE WITH:
NFPA #96.
NSF STANDARD #2.
UL STANDARD #1046.
INT. MECH. CODE (IMC).
ULC-S649.

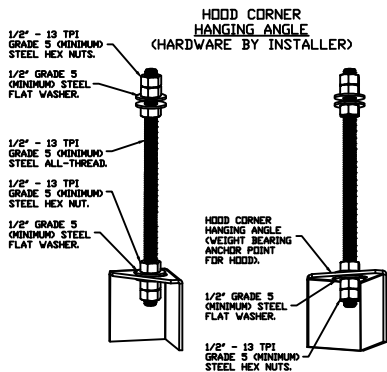


PLAN VIEW - HOOD #1 (6' Heated)
6' 0.00" LONG 5424FX-2-PSP-F



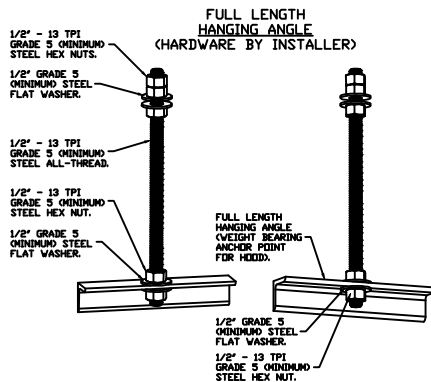
FloAire

JOB 6' Heated UC Left** Hood Stock	
LOCATION ,	
DATE 3/20/2023	JOB # 5910183
DWG # 1	DRAWN BY courtneyh
REV.	SCALE 3/8" = 1'-0"



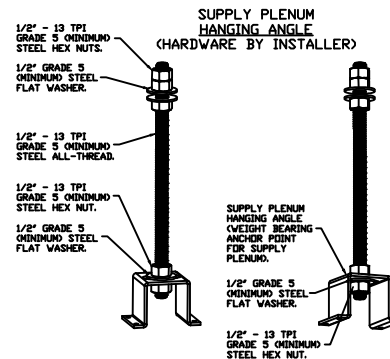
ASSEMBLY INSTRUCTIONS

HANGING ANGLE MUST BE SUPPORTED WITH 1/2" - 13 TPI GRADE 5 (MINIMUM) ALL-THREAD. SANDWICH HANGING ANGLES AND CEILING ANCHOR POINTS WITH 1/2" GRADE 5 (MINIMUM) STEEL FLAT WASHERS AND 1/2" - 13 TPI GRADE 5 (MINIMUM) HEX NUTS AS SHOWN. MUST USE DOUBLED HEX NUT CONFIGURATION BENEATH HOOD HANGING ANGLES AND ABOVE CEILING ANCHORS. MAINTAIN 1/4" OF EXPOSED THREADS BENEATH BOTTOM HEX NUT. TORQUE ALL HEX NUTS TO 57 FT-LBS.



ASSEMBLY INSTRUCTIONS

HANGING ANGLE MUST BE SUPPORTED WITH 1/2" - 13 TPI GRADE 5 (MINIMUM) ALL-THREAD. SANDWICH HANGING ANGLES AND CEILING ANCHOR POINTS WITH 1/2" GRADE 5 (MINIMUM) STEEL FLAT WASHERS AND 1/2" - 13 TPI GRADE 5 (MINIMUM) HEX NUTS AS SHOWN. MUST USE DOUBLED HEX NUT CONFIGURATION ABOVE CEILING ANCHORS. SINGLE HEX NUT BENEATH HANGING ANGLE IS ACCEPTABLE FOR FULL LENGTH HANGING ANGLES. MAINTAIN 1/4" OF EXPOSED THREADS BENEATH BOTTOM HEX NUT. TORQUE ALL HEX NUTS TO 57 FT-LBS.



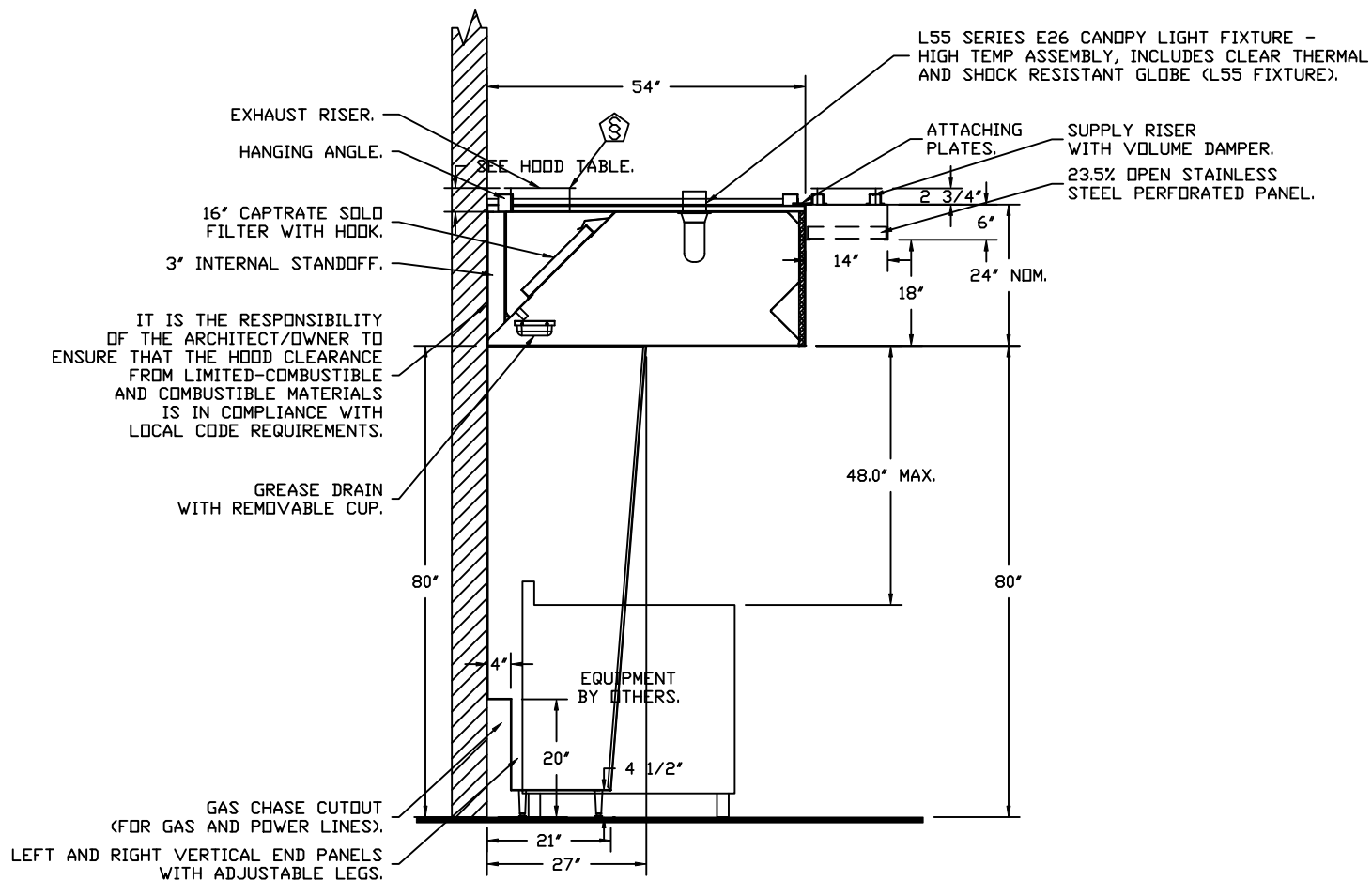
ASSEMBLY INSTRUCTIONS

HANGING ANGLE MUST BE SUPPORTED WITH 1/2" - 13 TPI GRADE 5 (MINIMUM) ALL-THREAD. SANDWICH HANGING ANGLES AND CEILING ANCHOR POINTS WITH 1/2" GRADE 5 (MINIMUM) STEEL FLAT WASHERS AND 1/2" - 13 TPI GRADE 5 (MINIMUM) HEX NUTS AS SHOWN. MUST USE DOUBLED HEX NUT CONFIGURATION ABOVE CEILING ANCHORS. SINGLE HEX NUT BENEATH HANGING ANGLE IS ACCEPTABLE FOR PSP HANGING ANGLES. MAINTAIN 1/4" OF EXPOSED THREADS BENEATH BOTTOM HEX NUT. TORQUE ALL HEX NUTS TO 57 FT-LBS.



FloAire

JOB 6' Heated UC Left** Hood Stock	
LOCATION ,	
DATE 3/20/2023	JOB # 5910183
DWG # 2	DRAWN BY courtneyh
REV.	SCALE 3/8" = 1'-0"



SECTION VIEW - MODEL 5424FX-2-PSP-F
HOOD - #1 (6' Heated)



FloAire

JOB 6' Heated UC Left** Hood Stock	
LOCATION ,	
DATE 3/20/2023	JOB # 5910183
DWG # 3	DRAWN BY courtneyh
REV.	SCALE 3/8" = 1'-0"

EXHAUST FAN INFORMATION – JOB#5910183

FAN UNIT NO	TAG	QTY	FAN UNIT MODEL #	MANUFACTURER	CFM	ESP	RPM	MOTOR ENCL	HP	BHP	PHASE	VOLT	FLA	DISCHARGE VELOCITY	WEIGHT (LBS)	SONES
1	6' HEATED	1	DU8SH	FLOAIRE	1404	1.000	1247	TEAO-ECM	0.750	0.3510	1	115	8.9	444 FPM	94	9.7

MUA FAN INFORMATION – JOB#5910183

FAN UNIT NO	TAG	QTY	FAN UNIT MODEL #	BLOWER	HOUSING	MIN CFM	DESIGN CFM	ESP	RPM	MOTOR ENCL	HP	BHP	PHASE	VOLT	FLA	MCA	MDCP	WEIGHT (LBS)	SONES
2	6' HEATED	1	F1-D.500-15D	15MF-1-MDD	A1-D.500	1000	1123	0.300	1288	TEAO-ECM	1.000	0.3240	1	115	11.6	14.5A	25A	462	8.7

GAS FIRED MAKE-UP AIR UNIT(S)

FAN UNIT NO	TAG	INPUT BTUs	OUTPUT BTUs	TEMP RISE	REQUIRED INPUT GAS PRESSURE	GAS TYPE	BURNER EFFICIENCY(%)
2	6' HEATED	88793	81690	70°F	7 IN. W.C. – 14 IN. W.C.	NATURAL	92

FAN OPTIONS

FAN UNIT NO	TAG	QTY	DESCRIPTION
1	6' HEATED	1	GREASE BOX
		1	HINGE KIT – SHIPS LOOSE FOR CURB SUPPLIED BY OTHERS
		1	ECM WIRING PACKAGE – EXHAUST – MODBUS CONTROL –MSC- <TELCD>, CCW ROTATION
		1	2 YEAR PARTS WARRANTY
2	6' HEATED	1	SIZE 1 TEMPERED COMMERCIAL DOWN DISCHARGE FOR DIRECT DRIVE AHUS
		1	INLET PRESSURE GAUGE, 0-35"
		1	MANIFOLD PRESSURE GAUGE, -5 TO 15" WC
		1	LDW FIRE START
		1	SHIP LOOSE GAS STRAINER 3/4"
		1	MOTORIZED BACKDRAFT DAMPER FOR A1-D HOUSING – MEETS AMCA CLASS 1A RATING
		1	FREEZESTAT <10>
		1	ECM WIRING PACKAGE – DD SUPPLY – PWM SIGNAL FROM ECPM03 PREWIRE <TELCD MOTOR>
		1	2 YEAR PARTS WARRANTY

FAN ACCESSORIES

FAN UNIT NO	TAG	EXHAUST			SUPPLY			
		GREASE CUP	GRAVITY DAMPER	WALL MOUNT	SIDE DISCHARGE	GRAVITY DAMPER	MOTORIZED DAMPER	WALL MOUNT
1	6' HEATED	YES						
2	6' HEATED						YES	

CURB ASSEMBLIES

NO	DN FAN	TAG	WEIGHT	ITEM	SIZE
1	# 1	6' HEATED	32 LBS	CURB	23.000"W X 23.000"L X 20.000"H ALONG LENGTH, RIGHT VENTED.
2	# 2	6' HEATED	65 LBS	CURB	21.000"W X 71.000"L X 20.000"H ALONG WIDTH, RIGHT INSULATED.

FAN SOUND DATA

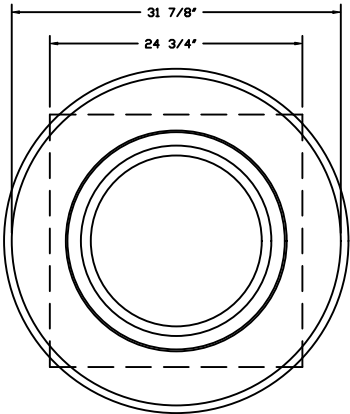
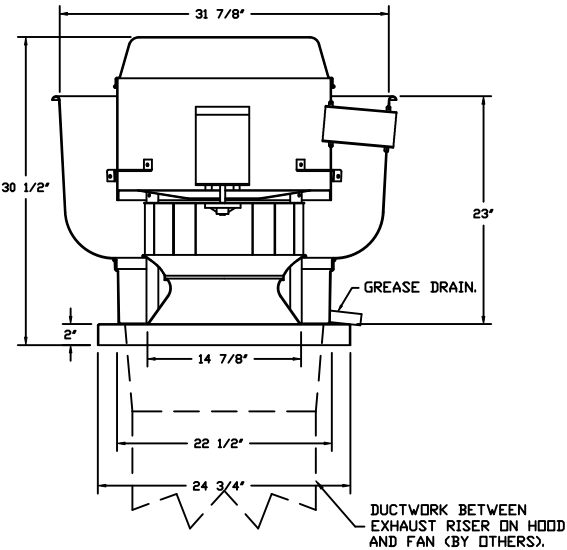
FAN UNIT NO	TAG	MOTOR	SOUND DATA			OCTAVE BAND SOUND DATA								
			LWA	SONES @ 5 FT	DBA @ 5 FT	DISTANCE (FT)	63 HZ	125 HZ	250 HZ	500 HZ	1 KHZ	2 KHZ	4 KHZ	8 KHZ
1	6' HEATED	EXHAUST	72.2	9.65916887418369	60.7	5	74	75	75.5	68.6	65.9	63	57.7	51.7
2	6' HEATED	SUPPLY	70.7	8.70480478745237	59.2	5	69.7	71.1	70.5	66.8	64.3	63.7	60.7	57.8



FloAire

JOB6' Heated UC Left** Hood Stock	
LOCATION ,	
DATE 3/20/2023	JOB # 5910183
DWG # 4	DRAWN BY courtneyh
REV.	SCALE 3/8" = 1'-0"

FAN #1 DU85H - EXHAUST FAN (6' HEATED)



TOP VIEW

FEATURES:

- DIRECT DRIVE CONSTRUCTION (NO BELTS/PULLEYS).
- ROOF MOUNTED FANS.
- RESTAURANT MODEL.
- UL705 AND UL762 AND ULC-S645
- VARIABLE SPEED CONTROL.
- INTERNAL WIRING.
- THERMAL OVERLOAD PROTECTION (SINGLE PHASE).
- HIGH HEAT OPERATION 300°F (149°C).
- GREASE CLASSIFICATION TESTING.
- NEMA 3R SAFETY DISCONNECT SWITCH.

NORMAL TEMPERATURE TEST

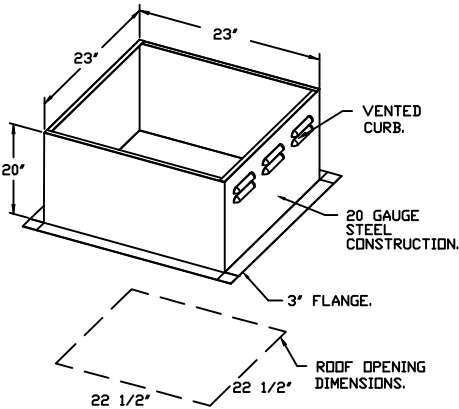
EXHAUST FAN MUST OPERATE CONTINUOUSLY WHILE EXHAUSTING AIR AT 300°F (149°C) UNTIL ALL FAN PARTS HAVE REACHED THERMAL EQUILIBRIUM, AND WITHOUT ANY DETERIORATING EFFECTS TO THE FAN WHICH WOULD CAUSE UNSAFE OPERATION.

ABNORMAL FLARE-UP TEST

EXHAUST FAN MUST OPERATE CONTINUOUSLY WHILE EXHAUSTING BURNING GREASE VAPORS AT 600°F (316°C) FOR A PERIOD OF 15 MINUTES WITHOUT THE FAN BECOMING DAMAGED TO ANY EXTENT THAT COULD CAUSE AN UNSAFE CONDITION.

OPTIONS

- GREASE BOX.
- HINGE KIT - SHIPS LOOSE FOR CURB SUPPLIED BY OTHERS.
- ECM WIRING PACKAGE -
- EXHAUST - MODBUS CONTROL
- MSC- (TELCO), CCW ROTATION.
- 2 YEAR PARTS WARRANTY.

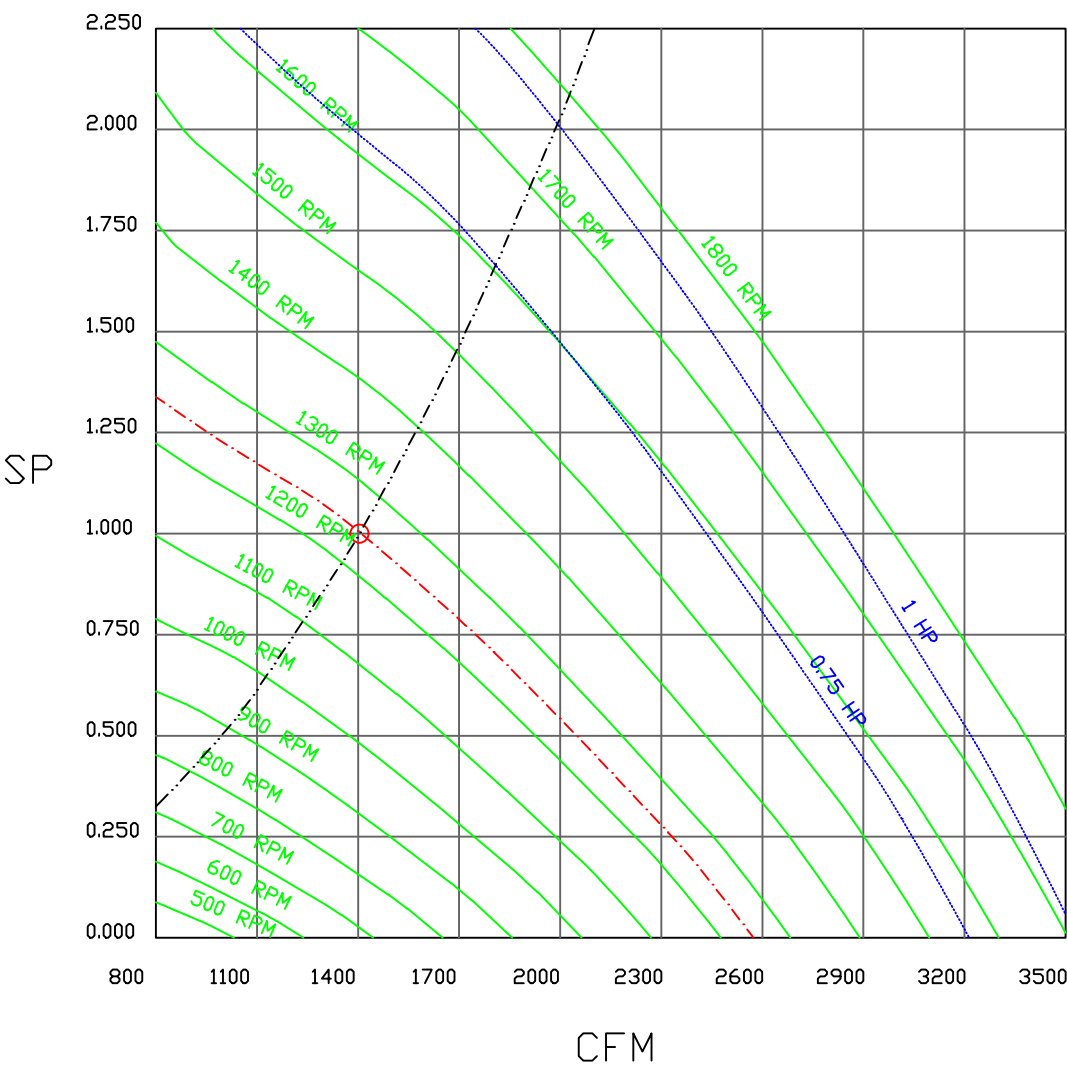


FloAire

JOB 6' Heated UC Left** Hood Stock	
LOCATION ,	
DATE 3/20/2023	JOB # 5910183
DWG # 5	DRAWN BY courtneyh
REV.	SCALE 3/8" = 1'-0"

FAN#1 (6' HEATED) - EXHAUST PERFORMANCE CURVES.

1404 CFM, 1 SP @ 1247 RPM AND 0.351 BHP AT 0 FEET AND 120 DEG F.
* PLEASE NOTE THAT THESE CURVES WERE ADJUSTED FOR JOB SPECIFIC TEMPERATURE AND ALTITUDE.



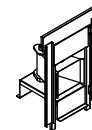
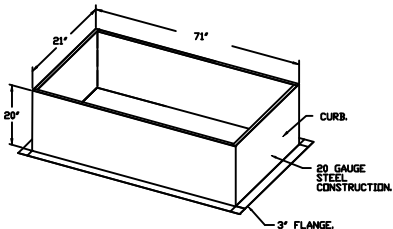
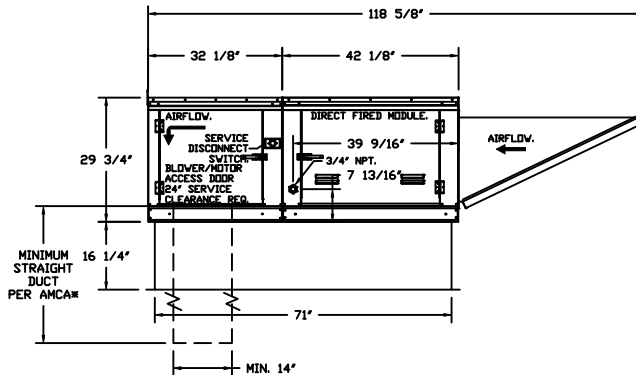
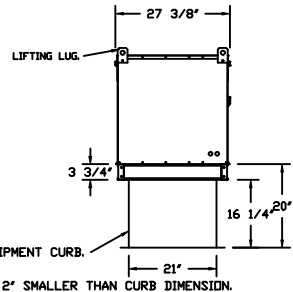
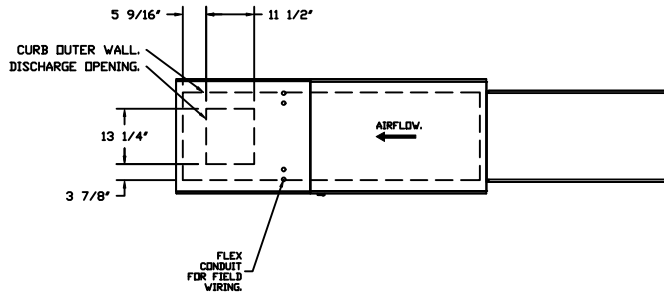


FloAire

JOB 6' Heated UC Left** Hood Stock	
LOCATION ,	
DATE 3/20/2023	JOB # 5910183
DWG # 6	DRAWN BY courtneyh
REV.	SCALE 3/8" = 1'-0"

- FAN #2 F1-D500-15D - HEATER (6' HEATED)
1. DIRECT GAS FIRED HEATED MAKE UP AIR UNIT WITH 15' MIXED FLOW DIRECT DRIVE FAN.
 2. INTAKE HOOD WITH E2 FILTERS.
 3. DOWN DISCHARGE - AIR FLOW RIGHT -> LEFT.
 4. DOWN DISCHARGE CONSTRUCTION FOR SIZE 1 DIRECT DRIVE AHUS.
 5. GAS PRESSURE GAUGE, 0-35", 2.5" DIAMETER, 1/4" THREAD SIZE.
 6. GAS PRESSURE GAUGE, -5 TO +15 INCHES WC, 2.5" DIAMETER, 1/4" THREAD SIZE.
 7. LOW FIRE START. ALLOWS THE BURNER CIRCUIT TO ENERGIZE WHEN THE MODULATION CONTROL IS IN A LOW FIRE POSITION.
 8. SHIP LOOSE GAS STRAINER. TO BE INSTALLED UPSTREAM OF UNIT CONNECTION. 3/4" CONNECTION.
 9. MOTORIZED BACK DRAFT DAMPER 16" X 18" FOR SIZE 1 STANDARD & MODULAR HEATER UNITS W/EXTENDED SHAFT, STANDARD GALVANIZED CONSTRUCTION, 3/4" REAR FLANGE, LOW LEAKAGE, TFB120S ACTUATOR INCLUDED.
 10. FREEZE STAT WITH 10" SENSOR. FACTORY SET AT 35°F AND 10 MINUTES.
 11. ECM WIRING PACKAGE FOR SUPPLY MOTORS WITH PWM SIGNAL FROM ECM03 PREWIRE.
 12. HINGED DOUBLE WALL INSULATED DOOR ASSEMBLY (BURNER/BLOWER SECTION).
 13. 2 YEAR PARTS WARRANTY

NOTE: SUPPLY DUCT MUST BE INSTALLED TO MEET SMACNA STANDARDS. A MINIMUM STRAIGHT DUCT LENGTH MUST BE MAINTAINED DOWNSTREAM OF UNIT DISCHARGE AS OUTLINED IN AMCA PUBLICATION 201. WHEN USING RECTANGULAR DUCTWORK, ELBOWS MUST BE RADIUS THROAT, RADIUS BACK WITH TURNING VANES. FLEXIBLE DUCTWORK AND SQUARE THROAT/SQUARE BACK ELBOWS SHOULD NOT BE USED. ANY TRANSITION AND/OR TURNS IN THE DUCTWORK WILL CAUSE SYSTEM EFFECT. SYSTEM EFFECT WILL DRASTICALLY INCREASE STATIC PRESSURE AND REDUCE AIRFLOW. DO NOT RELY ON UNIT TO SUPPORT DUCT IN ANY WAY. FAILURE TO PROPERLY SIZE DUCTWORK MAY CAUSE SYSTEM EFFECTS AND REDUCE PERFORMANCE OF THE EQUIPMENT. SUGGESTED STRAIGHT DUCT SIZE IS 14" X 14".



DIRECT FIRED OFF PROFILE PLATE ASSEMBLY

NOTES: OFF PROFILE PLATE ASSEMBLY:

DIRECT FIRED BURNER SHALL HAVE PATENTED GAS PATENT NO. 10000000000, SELF-HEATING PROFILE PLATES DESIGNED TO ENSURE PROPER AIR VELOCITY AND PREHEAT TRAP ACROSS THE BURNER PROFILE PLATES. THIS BURNER IS DESIGNED TO ACHIEVE LOW COMBUSTION OF LIMITED 50-60% OXYGEN TO A MAXIMUM OF 10% OF OXYGEN WITH THE BURNER BEING 10% OF THE BURNER. THE PREHEAT TRAP SHALL BE 10% OF THE BURNER BEING 10% OF THE BURNER. THE PREHEAT TRAP SHALL BE 10% OF THE BURNER BEING 10% OF THE BURNER.

OFF PROFILE PLATE ASSEMBLY SHALL BE DELIVERED IN THE 30\"/>

GENERAL CONSTRUCTION:
-PROFILE PLATES SHALL BE 10\"/>

SUPPLY SIDE HEATER INFORMATION:

WINTER TEMPERATURE = 20°F. TEMP. RISE = 70°F.
BTUs CALCULATED OFF ACTUAL AIR DENSITY.
OUTPUT BTUs AT ALTITUDE OF 0.0 FT. = 81690.
INPUT BTUs AT ALTITUDE OF 0.0 FT. = 88794.

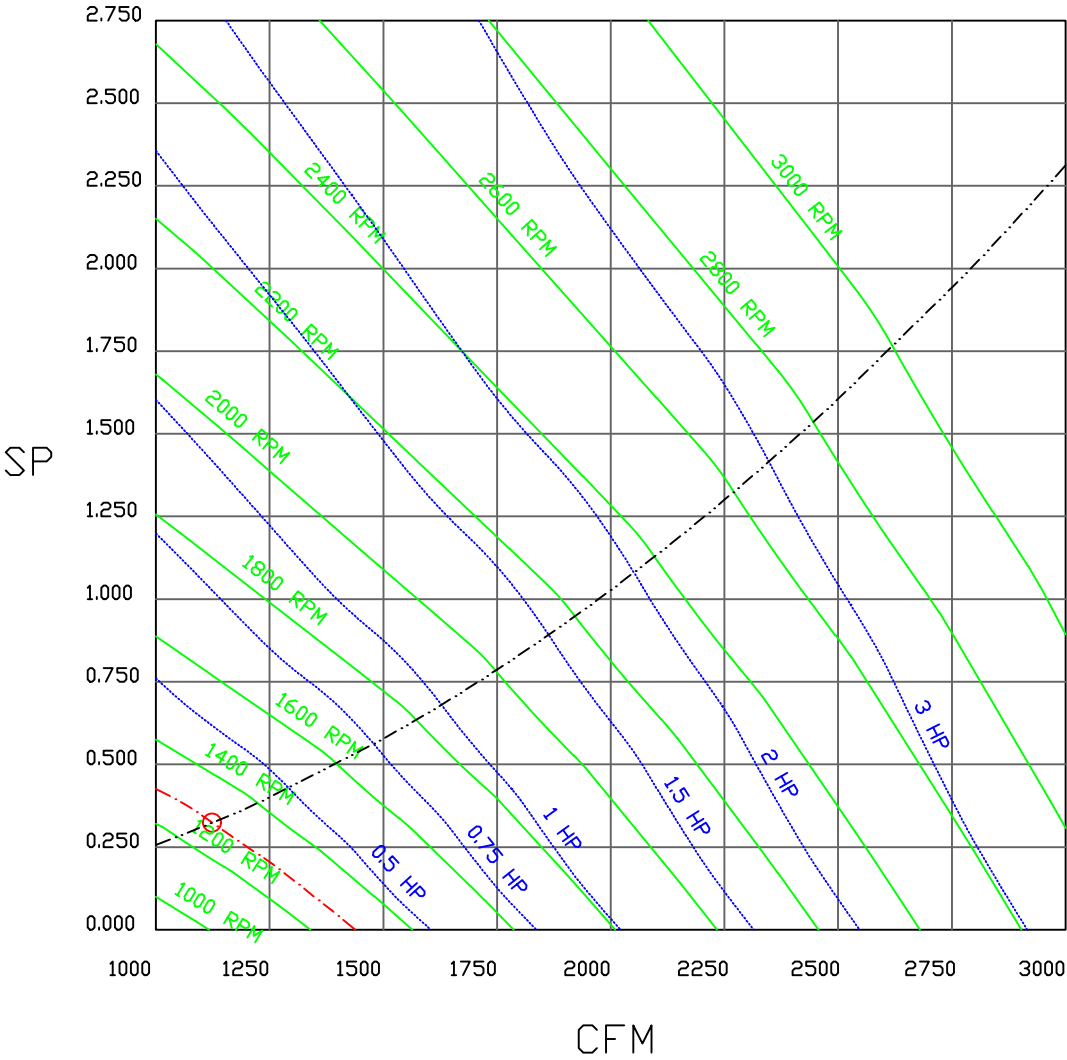


FloAire

JOB 6' Heated UC Left** Hood Stock	
LOCATION ,	
DATE 3/20/2023	JOB # 5910183
DWG # 7	DRAWN BY courtneyh
REV.	SCALE 1/4" = 1'-0"

FAN#2 (6' HEATED) - HEATER PERFORMANCE CURVES.

1123 CFM, 0.324 SP @ 1288 RPM AND 0.324 BHP AT 0 FEET AND 90 DEG F.
* PLEASE NOTE THAT THESE CURVES WERE ADJUSTED FOR JOB SPECIFIC TEMPERATURE AND ALTITUDE.





GREASE DUCT & CHIMNEY SPECIFICATIONS:

PROVIDE GREASE DUCT EQUAL TO FLOAIRE MODEL "FDW"

ROUND 20 GAUGE 430 STAINLESS STEEL DUCTWORK. MODEL "FDW"

IS LISTED TO UL-1978 AND IS INSTALLED USING "V" CLAMP LOCKING

CONNECTIONS SEALED WITH 3M FIRE BARRIER 2000 PLUS. MODEL "FDW"

DOES NOT REQUIRE WELDING PROVIDING IT HAS BEEN INSTALLED PER

THE MANUFACTURES INSTALLATION GUIDE.

PROVIDE RATED ACCESS DOORS AT EVERY CHANGE IN DIRECTION AND EVERY 12' ON CENTER.

PER MANUFACTURES LISTING MODEL "FDW" HORIZONTAL RUNS LESS THAN 75 FT. CAN BE

SLOPED 1/16" PER 12", HORIZONTAL RUNS MORE THAN 75 FT. CAN BE SLOPED 3/16" PER 12".

DUCT SHOULD BE SLOPED AS MUCH AS POSSIBLE TO REDUCE THE CHANCE OF GREASE

ACCUMULATION IN HORIZONTAL RUNS.

IF THE DUCT OR CHIMNEY IS WITHIN 18 INCHES OF COMBUSTIBLE MATERIAL, PROVIDE

UL-2221 OR UL-103 HT LISTED DOUBLE WALL GREASE DUCT OR DOUBLE WALL CHIMNEY

EQUAL TO FLOAIRE MODEL "FDW- 2R, 2R TYPE HT, 3R, OR 3Z" ROUND 20 GAUGE 430

STAINLESS INNER DUCT INSULATED WITH A 24 GAUGE 430 STAINLESS OUTER SHELL.

CUSTOMER APPROVAL TO MANUFACTURE:

APPROVED AS NOTED

☐

APPROVED WITH NO EXCEPTION TAKEN

☐

REVISE AND RESUBMIT

☐

SIGNATURE _____

YOUR TITLE _____

DATE _____



FloAire

JOB 6' Heated UC Left** Hood Stock

LOCATION ,

DATE 3/20/2023

JOB # 5910183

DWG # 9

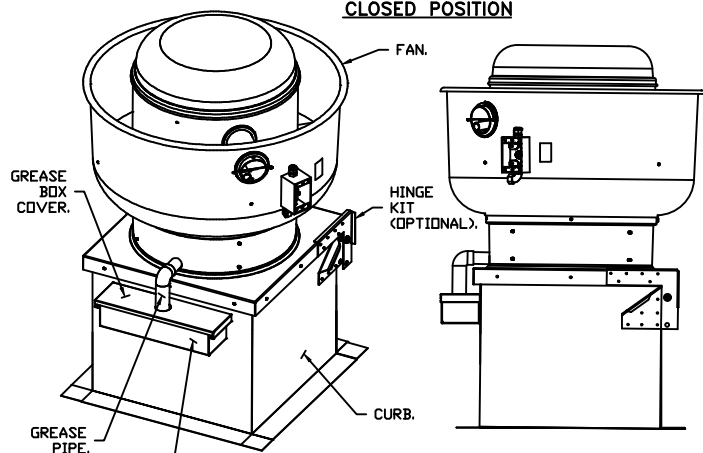
DRAWN BY courtneyh

REV.

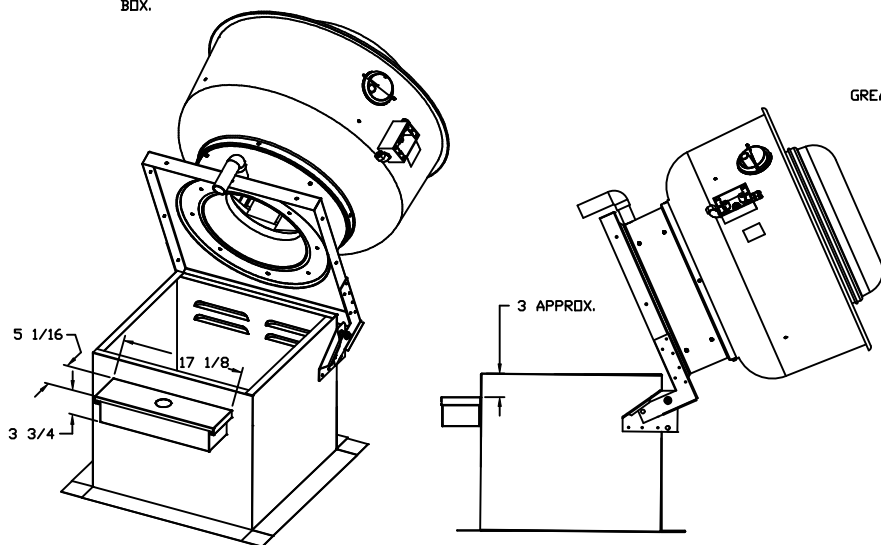
SCALE 3/8" = 1'-0"

GREASE BOX INSTALLATION

CLOSED POSITION



OPEN POSITION



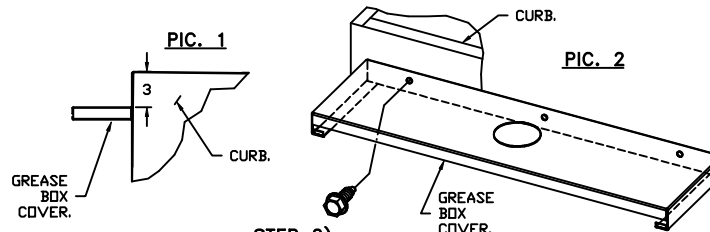
PARTS INCLUDED

GREASE BOX.
GREASE BOX COVER.
GREASE PIPE.
SHEET METAL SCREWS
3 - LONG (3/4" LG.).

GREASE BOX FIELD INSTALLATION

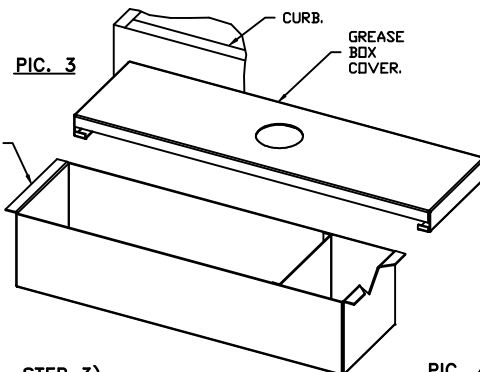
STEP 1)

ATTACH GREASE BOX COVER TO THE CURB,
HOLD 3" DIMENSION AS SHOWN ON PIC. 1.
SCREW GREASE BOX COVER TO CURB USING (3) LONG (3/4" LG.)
SCREWS AS SHOWN ON PIC. 2.



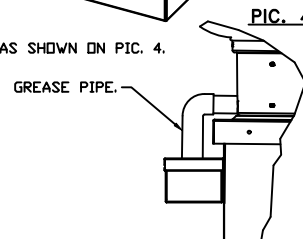
STEP 2)

ATTACH GREASE BOX TO GREASE BOX COVER, SLIDE AND DROP.
AS SHOWN ON PIC. 3.



STEP 3)

INSTALL GREASE PIPE AS SHOWN ON PIC. 4.



*NOTE: UL 705 INSTALL.



FloAire

JOB 6' Heated UC Left** Hood Stock	
LOCATION ,	
DATE 3/20/2023	JOB # 5910183
DWG # 10	DRAWN BY courtneyh
REV.	SCALE 3/8" = 1'-0"

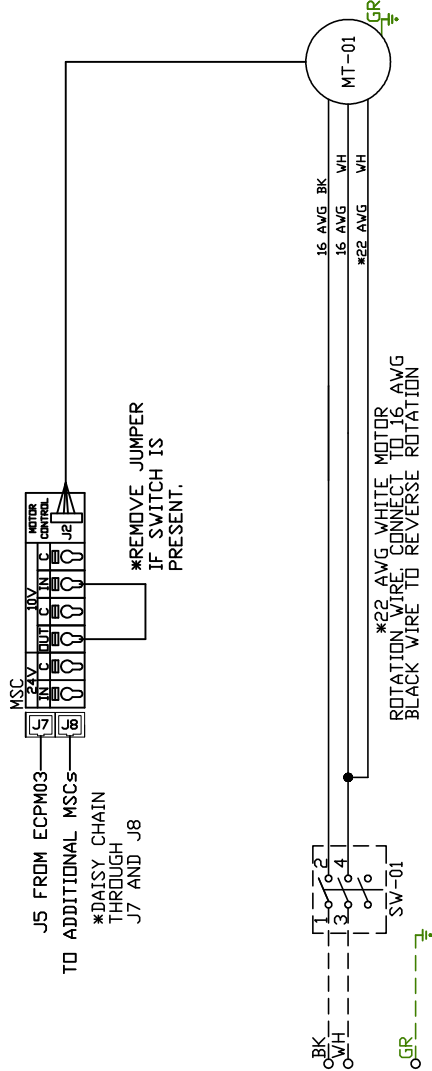
Exhaust Fan Wiring

JOB 5910183 - 6' Heated UC Left** Hood Stock

DRAWING NUMBER
EXH5910183-1

SHIP DATE 3/20/2023

MODEL DU85H



Label	Component Identification	
	Description	Location
MT-01	Fan Motor	[3]
MSC	Motor Speed Controller	[1]
SW-01	Main disconnect switch	[3]

MOTOR INFO
0.75HP-115V-1P-8.9FLA

ELECTRICAL INFORMATION
MOTOR/CTRL MCA: 11.2A
MOTOR/CTRL MOP: 20A

NOTES	
---	DENOTES FIELD WIRING
---	DENOTES INTERNAL WIRING

WIRE COLOR

NAME _____

BK	-	BLACK	YW	-	YELLOW
BL	-	BLUE	GR	-	GREEN
BR	-	BROWN	GY	-	GRAY
OR	-	ORANGE	PR	-	PURPLE
RD	-	RED	PK	-	PINK
WH	-	WHITE			

Installation Wiring

DRAWING NUMBER RP5910183-2

JOB

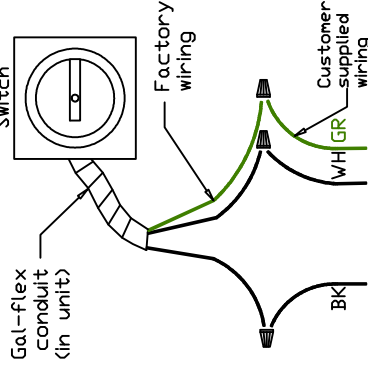
5910183 - 6' Heated UC Left** Hood Stock

SHIP DATE 3/20/2023

MODEL F1-D.500-15D

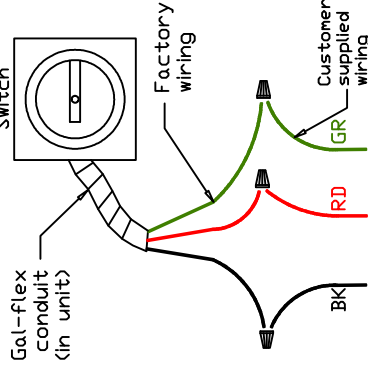
120 V 1 PH.

Disconnect Switch



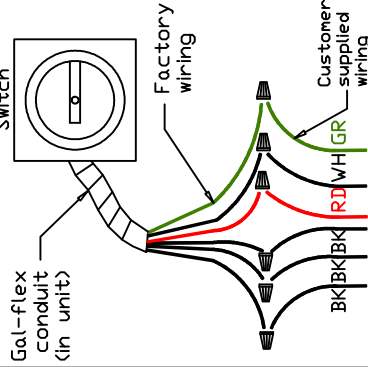
240 V 1 PH.

Disconnect Switch



208/460/600 V 3 PH.

Disconnect Switch

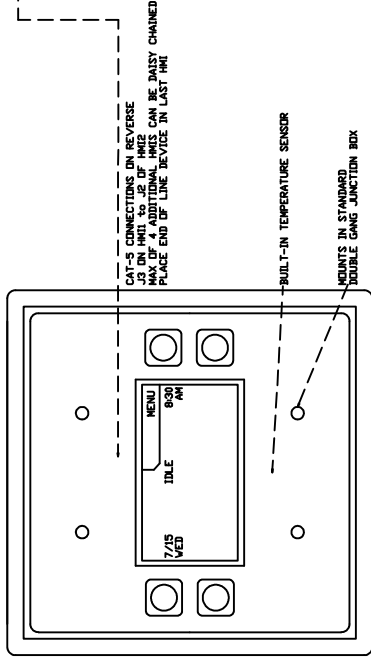
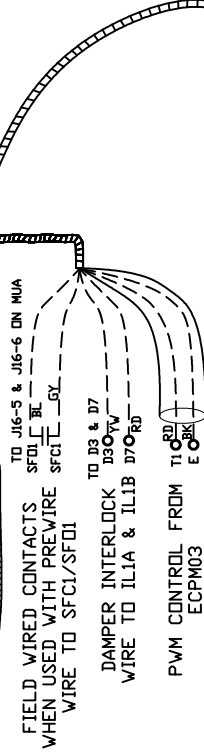


Field Wired Switch

Installed Options

STANDING POWER
RD & WH Wire (115V, 1 PHASE)

See above details.
Power Connection



WIRE COLOR
BK - BLACK YW - YELLOW
BL - BLUE GR - GREEN
BR - BROWN GY - GRAY
OR - ORANGE PR - PURPLE
RD - RED PK - PINK
WH - WHITE

NOTES

ELECTRICAL PACKAGE - JOB#5910183

NO	TAG	PACKAGE #	LOCATION	SWITCHES		OPTION	FANS CONTROLLED					
				LOCATION	QUANTITY		FAN TAG	TYPE	φ	HP	VOLT	FLA
				FACE MOUNT RIGHT SIDE OF HOOD	1 LIGHT		6' Heated	EXHAUST	1	0.750	115	8.9
1	6' Heated	SC-111110MA	UTILITY CABINET LEFT	HOOD # 1	1 FAN	SMART CONTROLS THERMOSTATIC CONTROL W/ RELAY ON/OFF WITH SUPPLY	6' Heated	SUPPLY	1	1.000	115	11.6



FloAire

JOB 6' Heated UC Left** Hood Stock	
LOCATION ,	
DATE 3/20/2023	JOB # 5910183
DWG # 14	DRAWN BY courtneyh
REV.	SCALE 3/8" = 1'-0"

JOB NO
5910183

MODEL NUMBER
SC-111110MA

JOB NAME
6' Heated UC Left Hood Stoc...

DRAWN BY

DATE
3/20/2023

SCHEMATIC TYPE

INSTALL
DWG NO
ECP #1-1

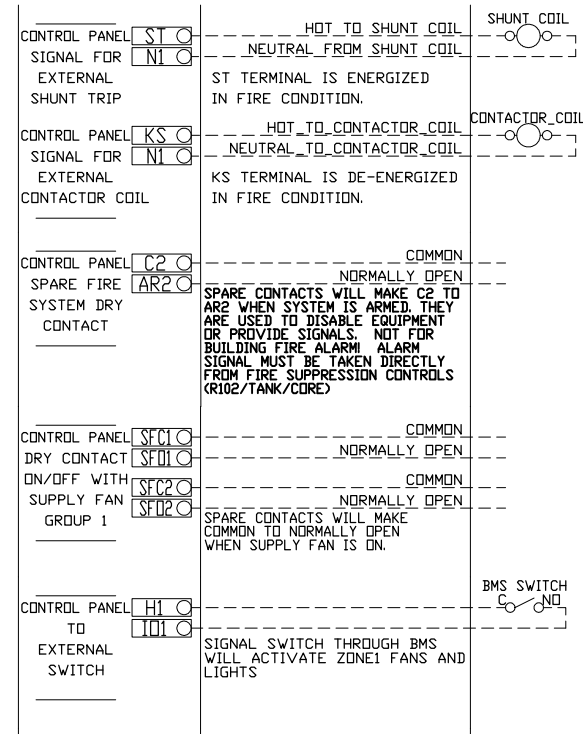
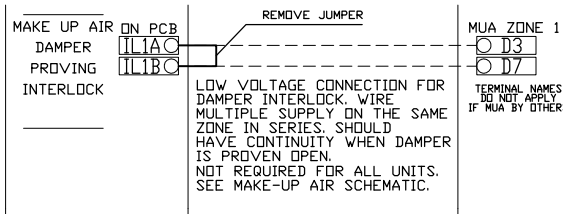
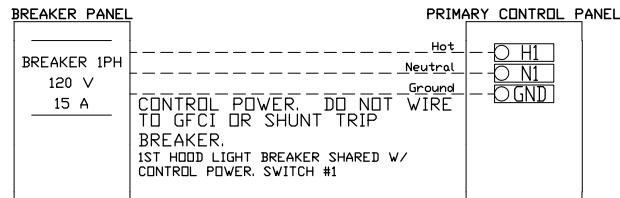
DESCRIPTION OF OPERATION:

120V 1 Phase w/ control for 1 Exhaust Fan, 1 Supply Fan, Exhaust on in Fire, Lights out in Fire, Relay On/Off with Supply Fan, Fan(s) On/Off Thermostatically Controlled. Room temperature sensor shipped loose for field installation.

BREAKER PANEL TO PRIMARY CONTROL PANEL

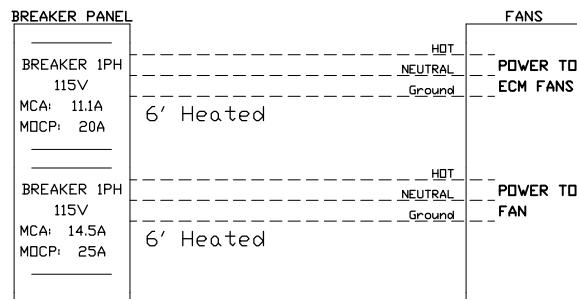
Responsibility: Electrician

BREAKER SIZE SHOWN IS THE MAXIMUM ALLOWED



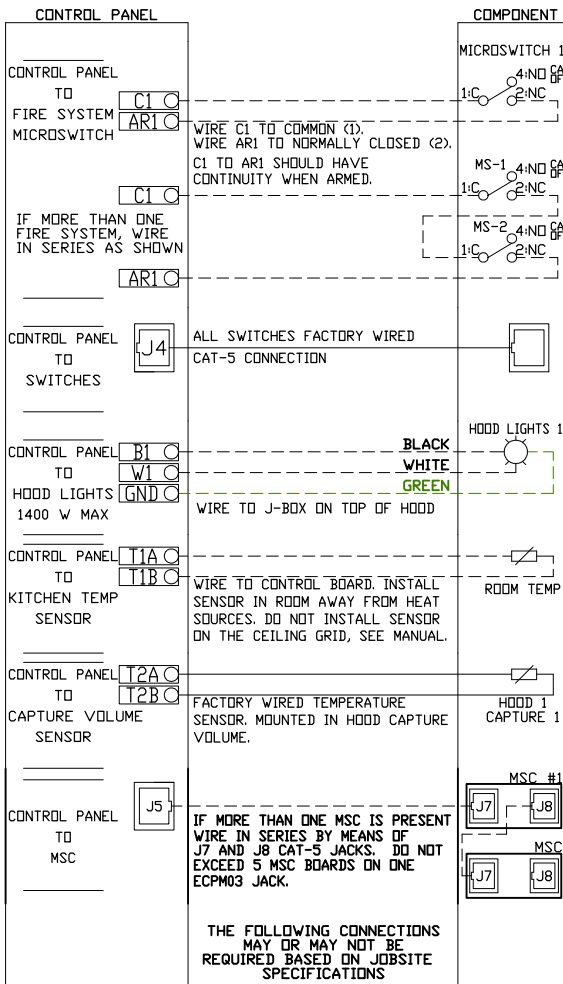
BREAKER PANEL TO FANS

Responsibility: Electrician



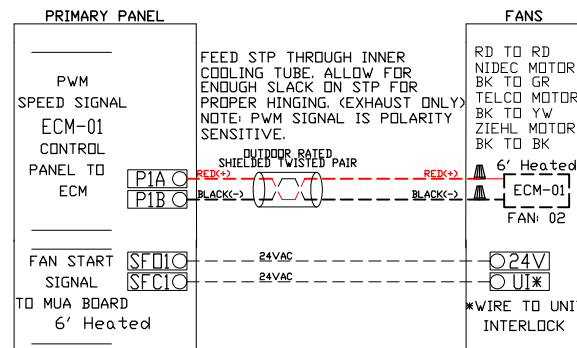
CONTROL PANEL TO ACCESSORY ITEMS

Responsibility: Electrician



CONTROL PANEL TO FANS

Responsibility: Electrician



A | B | C | D | E | F | G | H | I

MOTOR POWER CIRCUITS. SEE INSTALLATION
DIAGRAM FOR FIELD WIRING REQUIREMENTS.

FACTORY WIRING
SCHEMATIC
CIRCUIT BOARDS
DCV Rev. 2.10.00
HMI Rev. 2.10.00

RA-x 120 VAC RELAY	RD-x 24 VDC RELAY
NO 4 3	NO 4 3
NC 2 1	NC 2 1
COIL 8 7	COIL 8 7
COM 6 5	COM 6 5

COMPONENT LIST

LABEL	DESCRIPTION
ST-X	Starter PN: varies
C-X	Contactors PN: varies
SM-X	VFD PN: varies
LR-X	Line/Load Reactor PN: varies

LEGEND

---	FIELD WIRING
---	FACTORY WIRING
BK- BLACK	YW- YELLOW
BL- BLUE	GY- GREY
BR- BROWN	PR- PURPLE
OR- ORANGE	RD- RED
WH- WHITE	
OR/BL- OR/BL STRIPE	
BL/RD- BL/RD STRIPE	
RD/GN- RD/GN STRIPE	
WH/BL- WH/BL STRIPE	

JOB NAME
6' Heated UC Lef...

DRAWING TITLE
SC-111110MA

DESCRIPTION OF OPERATION
120V 1 Phase w/ control
for 1 Exhaust Fan, 1
Supply Fan, Exhaust on
In Fire, Lights out in
Fire, Relay On/Off with
Supply Fan, Fan(s)
On/Off Thermostatically
Controlled. Room
temperature sensor
shipped loose for field
installation.

JOB NO 5910183	DRAWN BY
TYPE FACTORY	DATE 3/20/2023
DWG NO ECP #1-3	