

PRODUCT INFORMATION PACKET

FASCO®

Model No: D292A

Catalog No: D292A

Fan Coil & Air Conditioner Motor, 1/10,1/15,1/25,1/35 HP, 1 Ph, 60 Hz, 208-230 V, 1050 RPM,
4 Speed, 42 Frame, OAO



Regal and Fasco are trademarks of Regal Rexnord Corporation or one of its affiliated companies.
©2024 Regal Rexnord Corporation, All Rights Reserved. MC017097E

RegalRexnord



Nameplate Specifications

Phase	1	Output HP	1/10,1/15,1/25,1/35 Hp
Voltage	208-230 V	Speed	1050 rpm
Service Factor	1.0	Frame	42
Enclosure	Open Air Over	Thermal Protection	Automatic
Ambient Temperature	40 °C	Frequency	60 Hz
Current	0.1,0.65,0.37 A	Duty	Continuous
Insulation Class	B	UL	Recognized
CSA	Y	CE	N
Number of Speeds	4		

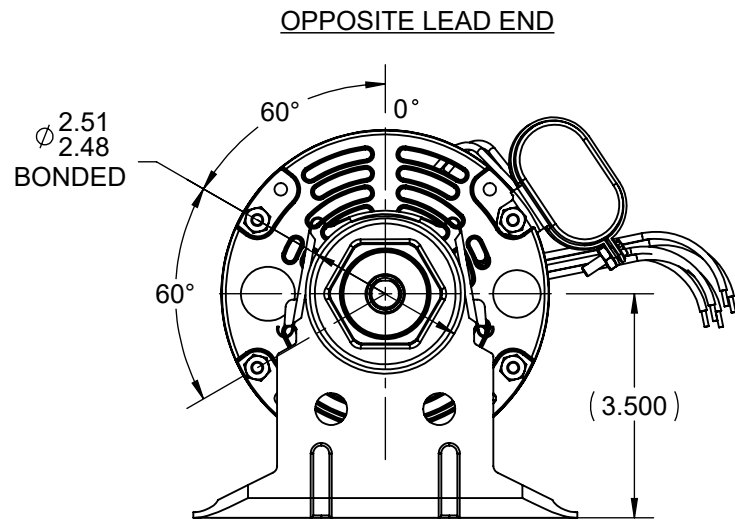
Technical Specifications

Electrical Type	Permanent Split Capacitor	Starting Method	Across The Line
Poles	6	Rotation	Clockwise Lead End
Mounting	Resilient Base	Drive End Bearing	Ball
Opp Drive End Bearing	Ball	Frame Material	Rolled Steel
Shaft Type	Flat	Frame Length	3.83 in
Shaft Diameter	0.500 in	Shaft Extension	10.4X.5X10.42 in
Outline Drawing	71870455R		

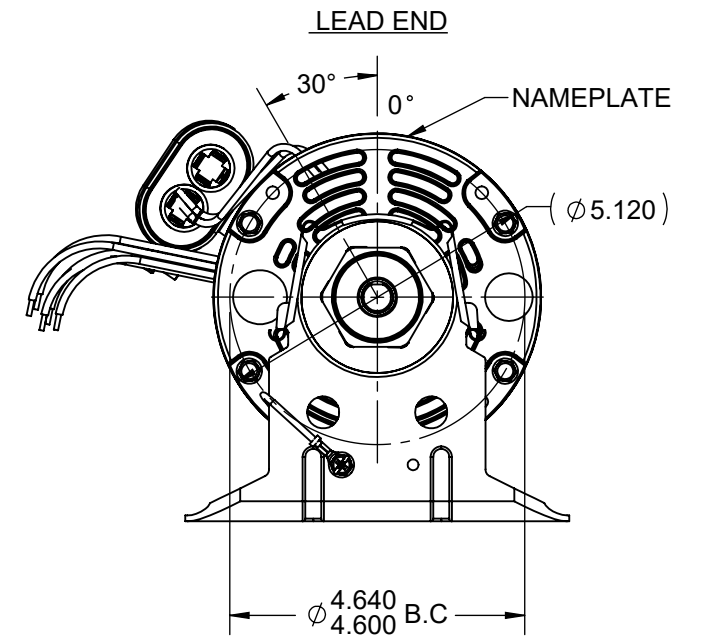
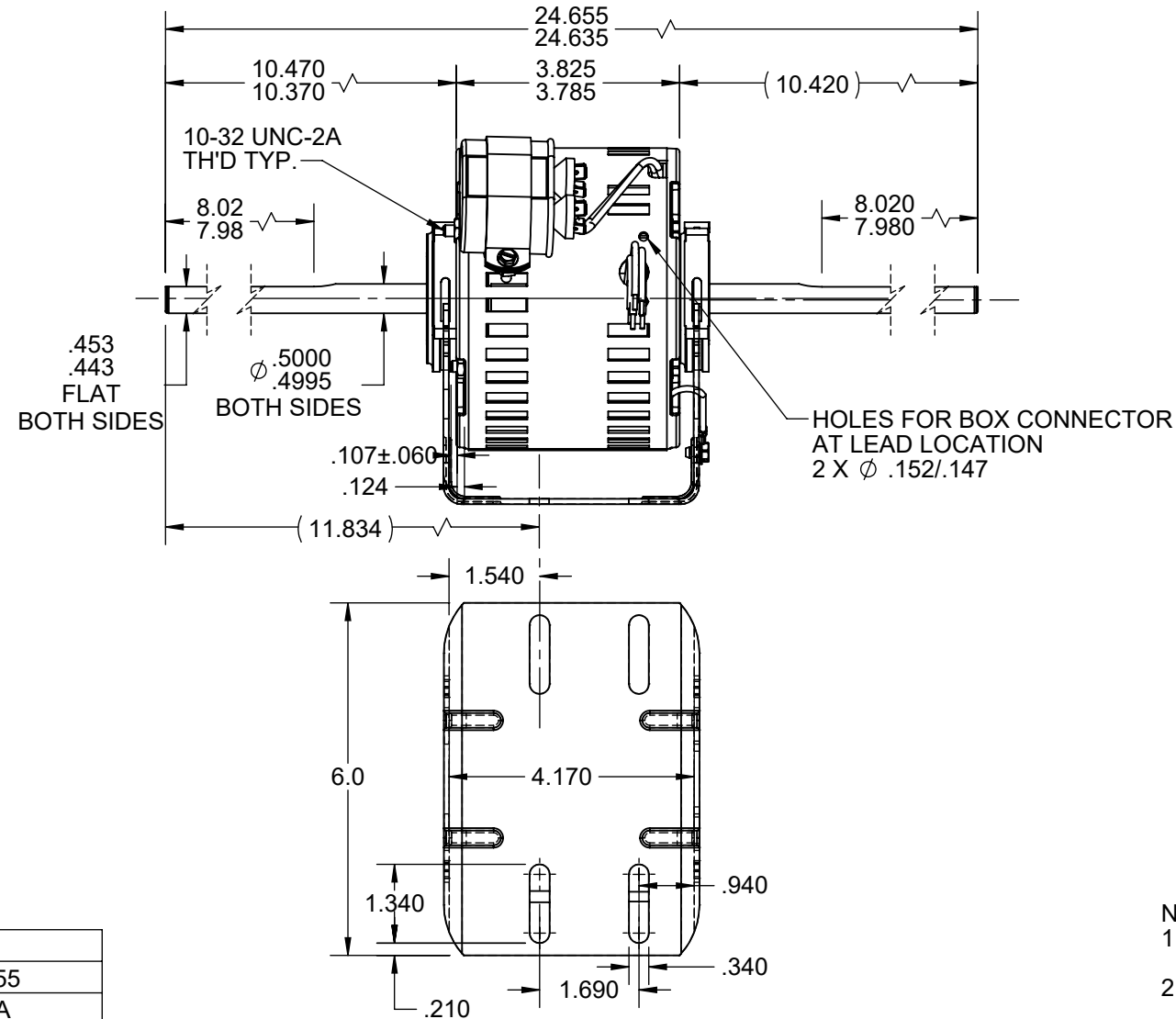
This is an uncontrolled document once printed or downloaded and is subject to change without notice. Date Created:07/03/2024

S.NO	CONNECTION	COLOR	EXIT TYPE	EXIT LOC (VIEWING LE)	GAGE	MATERIAL	WALL THK.	LENGTH (+/-1.50)	TERMINATION
1	COMMON LEAD	WHITE	SHELL BX NOTCH	9:20	18	THERMOPLASTIC	2/64	49.0	0.5 BWS
2	CAPACITOR LEAD	BROWN	SHELL NOTCH	11:00	18	THERMOPLASTIC	2/64	3.0	0.25 FQC
3	CAPACITOR LEAD	BRN/WHT	SHELL NOTCH	11:00	18	THERMOPLASTIC	2/64	3.0	0.25 FQC
4	HIGH SPEED LEAD	BLACK	SHELL BX NOTCH	9:20	18	THERMOPLASTIC	2/64	49.0	0.5 BWS
5	MED HI SPEED LEAD	BLUE	SHELL BX NOTCH	9:20	18	THERMOPLASTIC	2/64	49.0	0.5 BWS
6	MED LO SPEED LEAD	ORANGE	SHELL BX NOTCH	9:20	18	THERMOPLASTIC	2/64	49.0	0.5 BWS
7	LOW SPEED LEAD	RED	SHELL BX NOTCH	9:20	18	THERMOPLASTIC	2/64	49.0	0.5 BWS
8	GROUND LEAD	GRN/YEL	CLAMP SCREW	8:00	18	THERMOPLASTIC	2/64	4.0	#10 SERR.EYELET

VENTILATION SYSTEM	
SHELL VENTS	OPEN
ENDSHIELD(OPP.LEAD END)	OPEN
ENDSHIELD(LEAD END)	OPEN



ROTATION



NAMEPLATE DATA	
MODEL	71870455
CUST P/N	D292A
HP	1/10-1/15-1/25-1/35
RPM	1050 (4 SPD)
VOLTS	208/230
HZ	60
SPEEDS	4
AMPS	1.0 0.60 0.42 0.23
CAP REQ'D-1	4 MFD/370 VOLTS
CAP REQ'D-2	N/R
CONN. DRW	NP24X350208
ROTATION	CWLE

DRAWING REVISION DB	REVISION BY Anjani	REV DATE/© DATE 06/03/2024
REQUEST NUMBER ECR-0233978	APPROVED BY Muralidar	DATE 06/03/2024
REQUEST NUMBER DESCRIPTION Updated the Outline per ECR		
<small>COPYRIGHT (PER REVISION DATE) REGAL BELOIT AMERICA, INC. ALL RIGHTS RESERVED. PROPRIETARY AND CONFIDENTIAL INFORMATION - THIS DOCUMENT IS THE PROPERTY OF REGAL BELOIT AMERICA, INC. ("OWNER") AND CONTAINS OWNER'S PROPRIETARY INFORMATION. ANY PERSON, CORPORATION OR OTHER FIRM RECEIVING IT IS DEEMED, BY RECEIVING IT, TO AGREE THAT IT, AND/OR ANY PART OF IT, SHALL NOT BE DISCLOSED TO ANY PERSON, CORPORATION OR OTHER ENTITY, DUPLICATED, AND/OR USED, EXCEPT AS EXPRESSLY APPROVED IN WRITING IN ADVANCE BY OWNER. THIS DOCUMENT SHALL BE RETURNED TO OWNER UPON REQUEST. IT MAY BE SUBJECT TO CERTAIN RESTRICTIONS UNDER APPLICABLE EXPORT CONTROL LAWS AND REGULATIONS.</small>		

PRIMARY DIMENSIONS ARE INCH
mm DIMENSIONS IN [BRACKETS]
ARE FOR REFERENCE ONLY

- NOTE:
1. NAMEPLATE LABEL LOCATION: 360 - CENTER - READ FROM LE WITH RESPECT TO MOTOR ZERO.
2. OVERLOAD PROTECTOR : AUTOMATIC RESET (7AM 036)

DRAWN BY BHANU		Regal Beloit America, Inc.	
DATE 05/04/2023		DESCRIPTION	
APPROVED BY NV	CUSTOMER NAME: FASCO DISTRIBUTION CO.		
DATE 05/04/2023	MATERIAL	PROCESS/FINISH	
REFERENCE 71860018	SIZE B	DRAWING NUMBER 71870455R	SHEET 1 OF 1

Winding and Test Specification

WTS # 82870455-1

Revision # 3	Revised By : 610143927	Rev. Date : Apr 08, 2024	First Made for : 71870455R
---------------------	-------------------------------	---------------------------------	-----------------------------------

Comments : UPDATED NP AMPS PER TEST DATA

Engineering Data				WTS Nameplate Data			
Frame	29	Stator Punching	87356050	Horsepower	1/10-1/15-1/25	RPM	1050 (4 SPD)
Motor Type	KCP	Rotor Punching	87356051	Voltage	208/230	Amps	1.00 0.60 0.42
Air Gap	.012	PE Endring	88286017	Frequency	60	Phases	1
Stack	1.00	OPE Endring	88286017	Capacitor	4.0 µfd	Cap Volts	370
Con. Diag.	24B200217FIG2	Skew, Electric	10°	Test Volts : 230			
Wdg. Diag.	62006016	Rotor Resistance	36.4	Low Spd St Volts : 186			
Engineer	Durga	Max Space Factor	.42	Test Frequency : 60			
Spl. Insul.	24A105023DB-1	Energy SaverLbl	Yes	Test Instructions : 24A105040AA-P1			
Design Type	A						

Winding	Winding Characteristics								Resistance			Tap (Coil#)
	Poles	N1e	Strands	Wire Size	Wire Spec	Shift	Turns	Weight	Min	Nominal	Max	
Main *	6	263.1	1	0.0113	B22M47P1	0	133 175	0.39	76.46	80.48	84.51	
X Main	6	74.7	1	0.0089	B22M47P1	0	36 51	0.07	34.80	36.63	38.46	
Y Main	6	74.7	1	0.0089	B22M47P1	0	36 51	0.07	34.80	36.63	38.46	
Z Main	6	129.9	1	0.0080	B22M47P1	0	54 95	0.10	74.84	78.78	82.72	
W Main												
Start	6	276.2	1	0.0100	B22M47P1	91	101 212	0.32	102.03	107.40	112.77	

	N. L. Performance Data				Full Load Performance						
	Amps	Watts		Cap. Volts	Amps		Watts		Speed	Torque	
	Nominal	Nominal	Max		Nominal	Max	Nominal	Max	Nominal	Min	Nominal
High	0.55	103	124	388	0.82	0.90	183	192	1080	8.6	9.6
Med. High	0.29	58	70		0.50	0.55	110	116	1080	5.0	5.6
Medium											
Med. Low	0.20	38	46		0.34	0.37	73	77	1080	3.3	3.7
Low	0.12	23	28		0.20	0.22	43	45	1080	1.8	2.0

	Max. Torque			Locked Rotor		
	RPM	Torque		Amps	Watts	Torque
		Min	Nominal	Nominal	Nominal	Nominal
High	939	10.6	11.7	1.46	312	4.0
Med. High		6.3	7.0		189	2.3
Medium						
Med. Low		4.2	4.7		127	1.5
Low		2.4	2.6		73	0.8

	Customer/Special Load Points						
	Speed	Torque		Watts		Amps	
	Nominal	Min	Nominal	Nominal	Max	Nominal	Max
High	1050	10.1	10.6	199	209	0.89	0.98
Med. High	1050	5.9	6.2	120	126	0.55	0.60
Medium							
Med. Low	1050	3.9	4.1	80	84	0.37	0.41
Low	1050	2.2	2.3	47	49	0.22	0.24

* Large wire size may be double stranded.

Regal Beloit Confidential Information



Motor Details

Model :	71870455R	Catalog Number :	
General:			
Application :	DIST SALES	Motor Category :	COMPLETE MOTOR
Phases :	1	Production Status :	PROD
# of Speeds :	4	Stock Status :	
Testspec :	82870455-1	Approved For Sale :	
Horiz/Vertical :	HOR	Restricted Model :	
Shell Enclosure :	OPEN	Customer :	FASCO DISTRIBUTION
Endshield Enclosure :	OPEN	Customer Part# :	D292A
Nameplate Data:			
Horsepower :	1/10-1/15-1/25	GE Type :	KCP
RPM :	1050(4SPD)	Time Rating :	AO
Voltage :	208/230	Frequency :	60
FL Amps :	0.10 0.65 0.37	Insulation Class:	B
Capacitor 1mFd/V :	4.00/370	Capacitor 2mFd/V :	N/R
Additional Information :	40 DEG C AMBIENT		
	N/R		
Miscellaneous:			
Fullload RPM - HI :	1080	GE Frame :	42
Poles :	6	Shell Length :	3.375
Rotation :	CW	Drains :	N
Thermal Protection :		Est. Weight :	-10
Finish Color:	STD GRAY	Capacitor By :	RBC
OVERLOAD INFORMATION::			
Protector:	24A100514P11	Overload Temp :	150/140
Catalog No:	7AM036A54838C	Vendor Name:	TEXAS INSTRUMENTS
THERMAL CUT-OFF INFORMATION:			
TCO:	N/A	Overload Temp :	N/A
Catalog No:	N/A	Vendor Name:	N/A
U.L.CONSTRUCTION FILES:			
Motor Construction:	E46035(excluding SME)	Class B Insulation :	E306343(excluding SME)
Over Load :	E27885(excluding SME)	CSA(REY) :	MC236833(excluding SME)
Shaft:			
PE Type :	FLAT	OPE Type :	N/R
PE Length :	10.42	OPE Length :	10.42
PE Diameter :	.5	OPE Diameter :	.5
PE Flat Length :	8.00	OPE Flat Length :	8.00
Endshields:			
PE Material :	AL	OPE Material :	AL
PE Hub Type :	STD	OPE Hub Type :	STD
PE Oiler :	N/R	OPE Oiler :	HOLE
PE Oil Plug :	N/R	OPE Oil Plug :	N/R
PE Mounting Holes :	N/R	OPE Mounting Holes :	N/R
Bearings:			
PE Bearing Type :	BALL	OPE Bearing Type :	BALL
Bearing Protection :	No	Rohs Compliant :	No
Mounting:			
Base :	RB	Lug :	N/R
Clamp Screw :	Yes	Weld Screw :	No
Base:			
Type :	STD 29	Height :	3.5
Reversed :	Y	Assembly Angle :	360 degrees CW from Oil boss viewed from OPE of the motor.
Extended Clamp Screws:			
PE Pattern :		OPE Pattern :	
PE Length :	0.11	OPE Length :	0
PE Nut Qty :	1	OPE Nut Qty :	0
Head End :	OPE	Screw Size :	#10
Nut Thickness :	.12		
Lead & Cord :			
Lead End :	OPE	Lead Type :	
Lead Exit H/W :	N/R	Lead Harness Desc :	N/R
Lead Exit H/W Orient. :	STD		
Conductor ID :			
Exit :	COMM-FIXED LINE	Length :	49.0
Color :	WHITE	Mat'l Spec :	18 2/64 THERMOPLAST
Termination :	.50 BWS	Slot ID :	N/A
Conductor ID :	CAPACITOR		
Exit :	- SHELL NOTCH	Length :	3.0

Color :	BROWN	Mat'l Spec :	18 2/64 THERMOPLAST
Termination :	.25 FQC	Slot ID :	N/A
Conductor ID :	CAPACITOR		
Exit :	- SHELL NOTCH	Length :	3.0
Color :	BR/WH	Mat'l Spec :	18 2/64 THERMOPLAST
Termination :	.25 FQC	Slot ID :	N/A
Conductor ID :	HI		
Exit :	9:20 - SHELL NOTCH	Length :	49.0
Color :	BLACK	Mat'l Spec :	18 2/64 THERMOPLAST
Termination :	.50 BWS	Slot ID :	N/A
Conductor ID :	MED-HI		
Exit :	9:20 - SHELL NOTCH	Length :	49.0
Color :	BLUE	Mat'l Spec :	18 2/64 THERMOPLAST
Termination :	.50 BWS	Slot ID :	N/A
Conductor ID :	MED-LO		
Exit :	9:20 - SHELL NOTCH	Length :	49.0
Color :	ORANGE	Mat'l Spec :	18 2/64 THERMOPLAST
Termination :	.50 BWS	Slot ID :	N/A
Conductor ID :	LOW		
Exit :	9:20 - SHELL NOTCH	Length :	49.0
Color :	RED	Mat'l Spec :	18 2/64 THERMOPLAST
Termination :	.50 BWS	Slot ID :	N/A

Note : Exit position is viewed from the Lead End with the Shell Weld at 6:00.

Grounding :

Type :	BASE	Location :	8:00 viewed from OPE with Oil boss at 12:00
Exit Type :	CLAMPSCREW	AWG Size :	18
Length :	4.00	Color :	GRN-YEL
Terminal :	#10 SERRATED EYELET	Ins.Material & Thickness :	2/64 THRMOPLAST

Diagrams and Dimensions :

Outline Drawing :	71870455R	C-Dimension :	24.66
Connection Diagram :	24B200217 Fig# 2	Connection Label :	NP24X350208

Notes :

This document is the property of the Regal Beloit Company containing proprietary and confidential information.
Date of last revision : **20-NOV-23**

