

PRODUCT INFORMATION PACKET

FASCO®

Model No: D1071

Catalog No: D1071

OEM Replacement Motor, 1/6 HP, 1 Ph, 60 Hz, 208/230 V, 1100 RPM, 3 Speed, 42 Frame, OAO



Regal and Fasco are trademarks of Regal Rexnord Corporation or one of its affiliated companies.

©2024 Regal Rexnord Corporation, All Rights Reserved. MC017097E

RegalRexnord



Nameplate Specifications

Phase	1	Output HP	1/6 Hp
Output KW	0.13 kW	Voltage	208/230 V
Speed	1100 rpm	Service Factor	1
Frame	42	Enclosure	Open Air Over
Thermal Protection	Automatic	Ambient Temperature	40 °C
Frequency	60 Hz	Current	0.99 A
Duty	Continuous	Insulation Class	B
UL	Recognized	CSA	Y
CE	N	Number of Speeds	3

Technical Specifications

Electrical Type	Permanent Split Capacitor	Starting Method	Across The Line
Poles	6	Rotation	Reversible
Mounting	Extended Studs	Drive End Bearing	Ball
Opp Drive End Bearing	Ball	Frame Material	Rolled Steel
Shaft Type	Flat	Overall Length	6.02 in
Frame Length	3.38 in	Shaft Diameter	0.500 in
Shaft Extension	2.2 in		
Connection Drawing	SEE OUTLINE	Outline Drawing	7187001007_S001

This is an uncontrolled document once printed or downloaded and is subject to change without notice. Date Created:09/23/2024

- NOTES
1. STATOR LOCATION DIMENSION IS FROM SLEEVE EDGE (OPPOSITE LEAD END) TO STATOR STEEL 1.03/1.01.
 2. STATOR STACK 1 1/8".
 3. THRU AIR SPACING BETWEEN WIRE AND METAL .094 MIN.
 4. TIE BOLT TORQUE TOLERANCE 13 - 17 IN. LBS.
 5. FOR WASHER SET-UP, SEE CHART C600 0279, DETAIL "A".
 6. REMOVE PAPER TUBE FROM BROWN LEAD TERMINAL BEFORE ASSEMBLING TERMINAL HOUSING, 8903 4021, AS FOLLOWS: BROWN LEAD IN #2.
 7. CONNECT THE TWO YELLOW REV. LEADS TOGETHER AND THE TWO PURPLE REV. LEADS TOGETHER. THIS WILL GIVE CCWLE ROTATION.
 8. ASSEMBLE SHAFT TAG, 6121 6024, ON SHAFT LAST WITH PRINTED SIDE AWAY FROM FACE OF MOTOR.
 9. SALES TO SPECIFY ON P.O. WHICH PACK TO USE.

ECO	REV.	DATE	SPEC/CHECK
631560	4	8-7-03	LDC/LDC
638205	5	05-28-08	GAE/GAE
639162	6	3-6-09	MKR/MKR
641613	7	10-1-10	LDC/LDC

A. SEE PACKAGING MANUAL PAGE 2 FOR PACKAGING PROCEDURE.

1 MOTOR/CARTON;
32 MOTORS/LAYER;
6 LAYERS/PALLET;
192 MOTORS/PALLET.

B. SEE DRAWING 8785 6079 SH. 1 FOR PALLET LAYOUT.

C. PLACE INSTRUCTION SHEET, 6121 6012, IN CARTON.

D. CENTER LABEL, 6119 6944, ON END OF CARTON.

E. PLACE PAMPHLET, 6122 4579, IN CARTON WITH MOTOR.

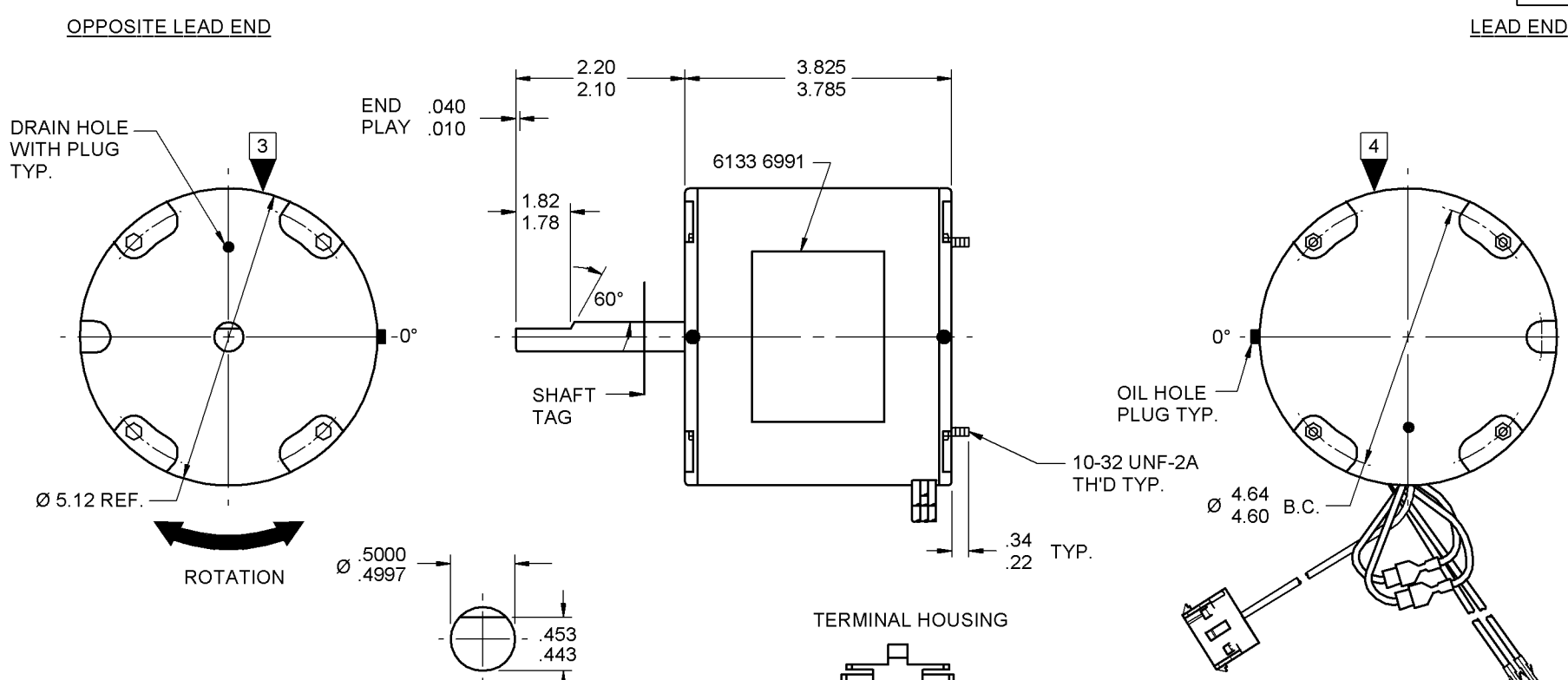
If Printed, this is an Uncontrolled Document

PRODUCTION TEST AT IDLE 230 VOLTS 60 HZ		MOTOR SPEED	PERFORMANCE TEST 230 VOLTS 60 HZ 1 PH 1/6 HP CAP. 5 MFD 370 VAC										
AMP	WATT		IDLE				LOADED				LOCKED		BREAK
			RPM	AMP	WATT	OZ/IN	RPM	AMP	WATT	OZ/IN	AMP	WATT	OZ/IN
.50 — .42	106.0 — 90.0	HIGH	1192	.42	90	150	1100	.87	199	69	1.71	359	197

HI-POT TEST 2000 VOLTS
MAX LEAKAGE CURRENT 5 mA

TYPICAL PERFORMANCE SHOWN FOR CWLE ROTATION

7187 0010 MA



7187 0010 = MADE IN U.S.A.
7187 0010R = ASSEMBLED IN MEXICO

FASCO FASCO INDUSTRIES, INC. MOTOR DIVISION

THERMALLY PROTECTED MODEL D1071

V. 208/230 HZ 60 PH 1 ROT ←

HP 1/6 TEAO CAP 5 MFD 370 VAC

AMP .99 INS CL B 40° C AMB

RPM 1100 TYPE U187B1 NO. 7187-0010

CONNECTION DIAGRAM
BROWN — CAP. LINE
RED — LINE
BLACK — LINE

ROTATION INSTRUCTIONS
CW CCW
SHAFT END SHAFT END
PURPLE → PURPLE →
PURPLE → YELLOW →
YELLOW → YELLOW →
YELLOW → PURPLE →

SAFETY WARNING
THIS MOTOR MUST BE GROUNDED IN ACCORDANCE WITH LOCAL OR NATIONAL ELECTRICAL CODES TO PREVENT POSSIBLE INJURY DUE TO ELECTRICAL SHOCK

DATE/BAR CODE AREA PER 8882 6003

6133 6991,R REV. 3

LEAD DATA: 18 GA. 2/64" INS. 105° C THERMO. BROWN CAP. LEAD, RED AND BLACK LINE LEADS 44.00"/42.00" LONG TO END OF .084 PIN TERMINALS. 2 YELLOW AND 2 PURPLE REVERSING LEADS 8.00"/6.00" LONG WITH 1/4" PRE-INSULATED Q.C. TERMINALS.

SPECIAL INSTRUCTIONS: SHAFT IS BONDERIZED. INSTRUCTION SHEET TO BE PACKED IN CARTON WITH MOTOR. PAMPHLET PACKED WITH MOTOR.

MOTORS PACKED MAX. PER SKID: PALLET PACK, 192 CARTON PACK, TRAY PACK.	
CUSTOMER: FASCO DISTRIBUTING CO.	PROPRIETARY: DO NOT DUPLICATE OR DISCLOSE TO THIRD PARTIES WITHOUT WRITTEN PERMISSION OF FASCO IND. INC., ELDON MO.
PART NUMBER: D1071	FASCO INDUSTRIES, INC. MOTOR DIVISION ELDON PLANT
APPLICATION: DIST. SALES	MOTOR TYPE
FINISH COLOR: GRAY	P.S.C.
MOTOR WEIGHT: LBS.	B LA FR A S C E B A
ENVIRONMENT: DAMP	00 87 30 T 17 AA 5 7 0
INSULATION CLASS: B	MOTOR NUMBER 7187 0010
	REV. 7