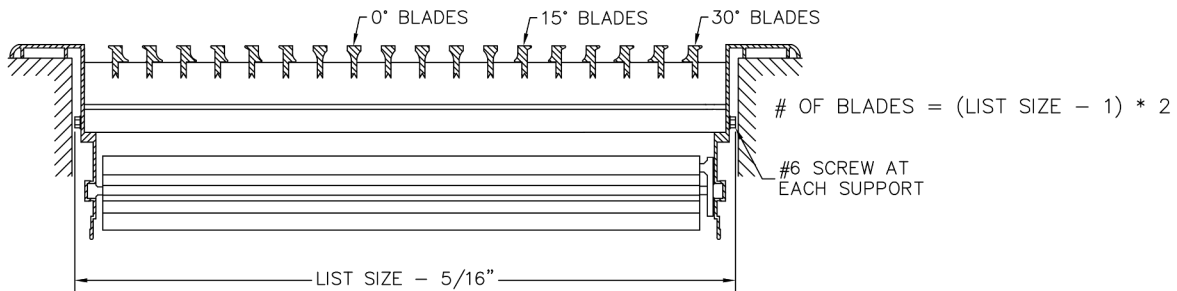
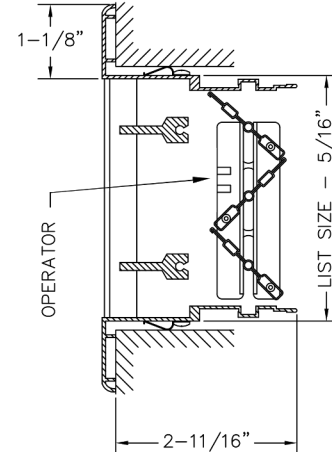
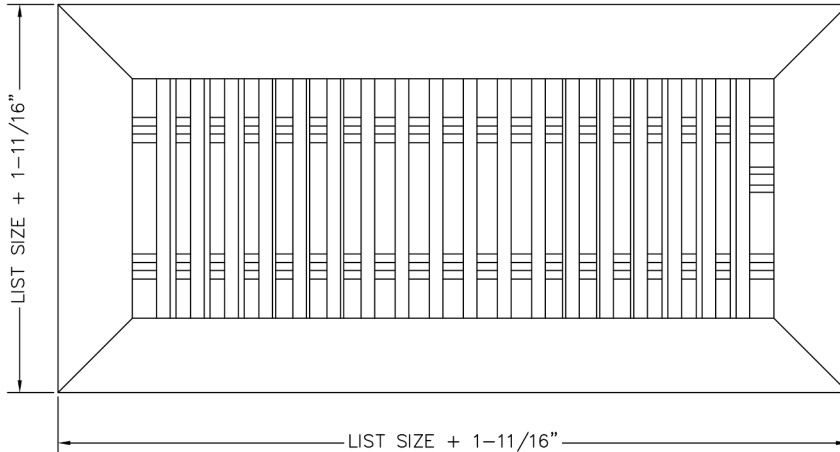


DAFD | Floor Bar Linear Register



- Fully extruded, high quality aluminum construction for a stylish appearance.
- Blade deflection transitions from 0°, 15° and 30° for wider air distribution.
- Reinforced core designed for floor applications.
- Opposed blade damper with slide operator.
- Fixed blades parallel to the long dimension.
- Lengths available on 1/2" increments as standard. Custom sizes available down to 1/16" increments.
- Available with durable powder coat finish.



1. Specify a Length
(3" - 8")

Inches MM

2. Select a Height

- 8"
- 10"
- 12"
- 14"
- 16"
- 18"

3. Select a Finish

- W - White
- S - Silver
- B - Brown
- M - Mill
- FB - Flat Black
- Special:

Updated - More sizes
now available!

**3 DAY
SHIP**
ANY SIZE. ANY MODEL.
GUARANTEED

4. Select a Lead Time

- 3 Day Ship
- Next Friday
- Standard Delivery

Alternative Mounting Options

B - Spring Clips are standard. Select only if an alternative mounting option is preferred:

- A - Screw Holes
- TB - No Mounting

Project / Location: _____

Architect: _____

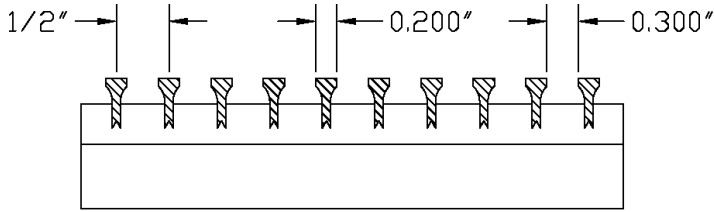
Engineer: _____

Contractor: _____

BLADE OPTIONS

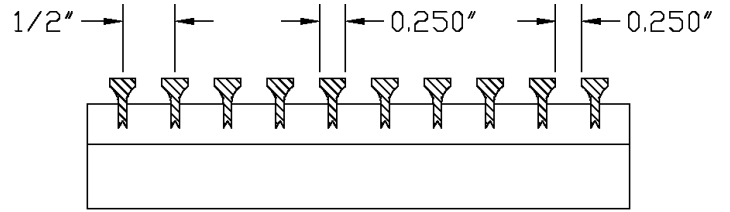
-00

0° 13/64" blades on 1/2" centers



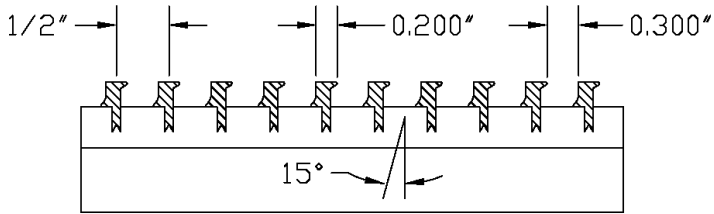
-01

0° 1/4" blades on 1/2" centers



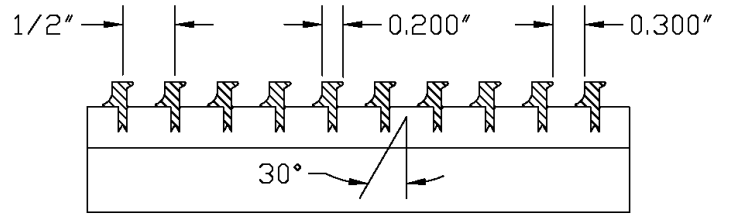
-15

15° 13/64" blades on 1/2" centers



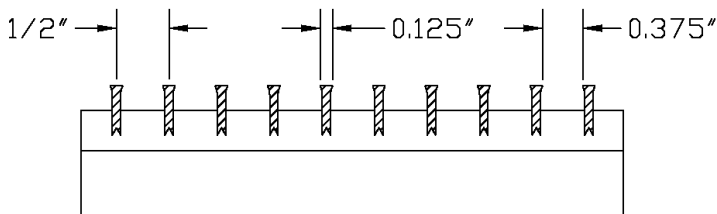
-30

30° 13/64" blades on 1/2" centers



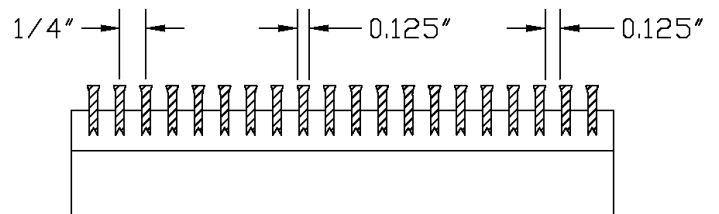
-82

0° 1/8" blades on 1/2" centers



-84

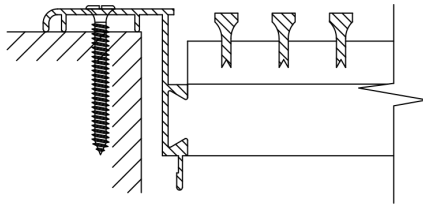
0° 1/8" blades on 1/4" centers



MOUNTING

-A

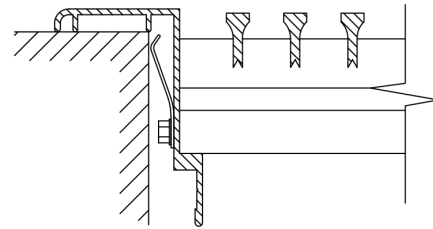
Screw Holes



Color matched screws with countersunk screw holes.

-B

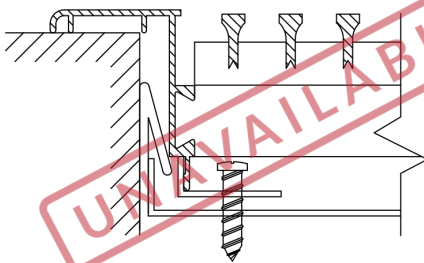
Spring Clips



Hidden clips behind the flange to keep the grille secure in the opening. Only suitable for floor & sill applications.

-C

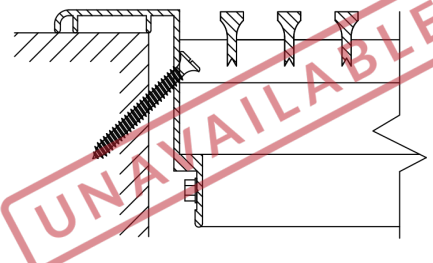
Concealed Brackets



Product is fastened to duct-mounted brackets, which are concealed behind the blades.

-D

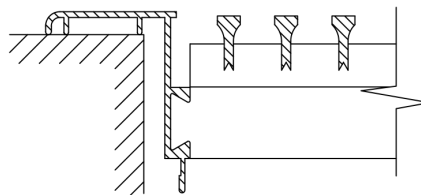
Sidewall Screw Holes



Screw holes are drilled at a 45° angle on inner flange. Only available with Removable Core.

-TB

No Mounting



Designed for lay-in ceiling and custom applications. For lay-in, order 2" under to account for flange.

e.g. 22" x 10" will have O.D. 23-11/16" x 11-11/16" and fit a standard 24" x 12" T-bar opening.