



MODEL: **NBR**

SAFETY RELIEF VALVE

DESCRIPTION

The NBR Safety Relief Valve is a direct acting, spring loaded relief valve. It is designed to protect pressurized systems from damage due to over pressurization.

INSTALLATION

The NBR Safety Relief Valve may be installed in any orientation. Position valve so pull ring or pin can be accessed for testing. Do not use reducing fittings between the NBR Safety Relief Valve and pressurized system. Do not install shutoff valves between the NBR Safety Relief Valve and pressurized system.

OPERATION

The NBR Safety Relief Valve is normally held closed by the force of the compression spring above the piston while control pressure is applied under the piston. When the controlling pressure exceeds the spring pressure, the piston is lifted off its seat, allowing flow through the discharge. Valve will reseal at 50 to 60 percent of the opening pressure.

ADJUSTMENT PROCEDURE

It is not recommended to adjust the set pressure of the NBR Safety Relief Valve.

DISASSEMBLY

It is not recommended to disassemble the NBR Safety Relief Valve.

INSPECTION

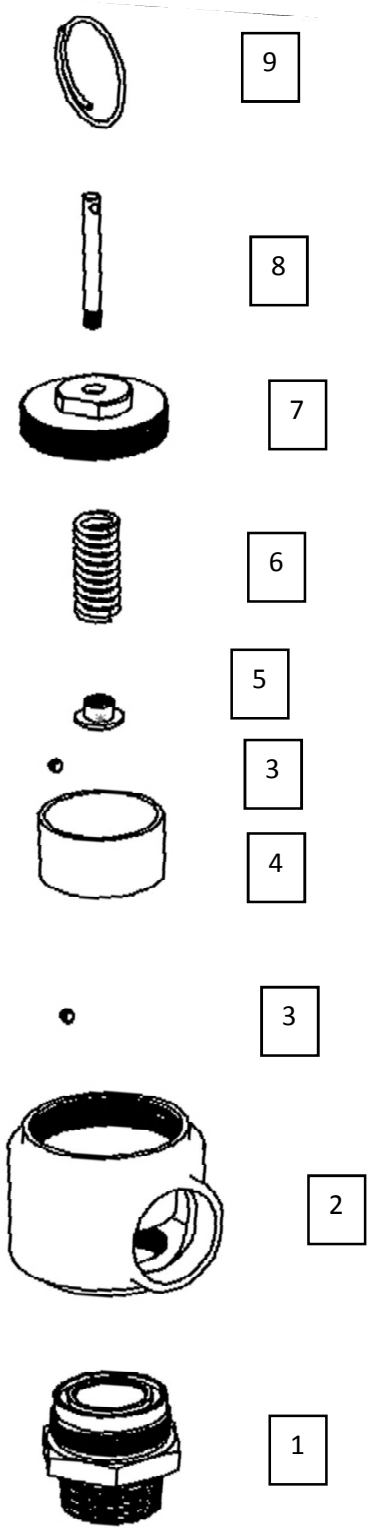
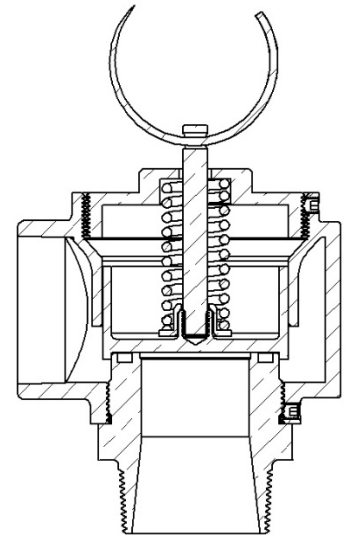
Visually inspect valve for signs of damage and corrosion. Raise pressure to 75 to 90 percent of the set pressure. Pull the ring or pin to open the valve. Release ring or pin and allow the valve to close.

REPAIR AND REPLACEMENT

Please contact the factory for repairs or replacement valves.

Parts List:

Item	Description	Quantity
1	INLET	1
2	BODY	2
3	SET SCREW	1
4	PISTON	1
5	SPRING GUIDE	1
6	SPRING	1
7	CAP	1
8	STEM	1
9	PULL RING	1



Troubleshooting:

SYMPTOM	PROBABLE CAUSE	REMEDY
Fails to open	Controlling pressure too low	Pull ring or pin to test
Fails to open	Mechanical obstruction, corrosion, or scale build-up	Remove Obstruction or Contact factory for repair or replacement
Leakage from outlet	Disk or seat damaged	Contact factory for repair or replacement
Fails to close	System pressure too high	Lower pressure to below 50% of set pressure to ensure valve closes.
Fails to close	Mechanical obstruction	Remove Obstruction or Contact factory for repair or replacement