

# Chromalox®

## Installation and RENEWAL PARTS IDENTIFICATION



## Type V Industrial Wall Mounted Convection Space Heater

### SERVICE REFERENCE

DIVISION 4		SECTION V	
SALES REFERENCE	(Supersedes PF404-3)	PF404-4	
		161-048364-001	
DATE MAY, 1999			

### Specifications —

Model	kW	Volts	No. Elem.	Amps	Btuh	Dimensions (In.)		
						Height	Width	Depth
V-2020	2	240	4	8.3	6,824	27	12-3/4	5-3/4
V-2030	3	240	4	12.5	10,236	27	12-3/4	5-3/4
V-2030	3	480	4	6.3	10,236	27	12-3/4	5-3/4
V-2040	4.5	120	6	25	10,236	27	17-3/4	5-3/4
V-2040	4.5	240	6	18.8	15,354	27	17-3/4	5-3/4
V-2040	4.5	480	6	9.4	15,354	27	17-3/4	5-3/4

### GENERAL

- All wiring should be done in accordance with local codes and the National Electrical Code by a qualified person as defined in the NEC.
- Connect air heaters to same line voltage as on heater nameplate.
- Check possibility of corrosion if heaters are operated in atmospheres other than air.
- In general, locate heater approximately 1 foot from the floor, but not less than 6 inches, for best overall results. Heater, however can be located anywhere to meet unique requirements of any particular application.
- Heaters are mounted directly on any type of surface-masonry, concrete, block, plastered walls, metal framework, etc.-using appropriate hardware.
- Standard heaters are mounted in a vertical position with the terminal end on the bottom. This unit has special baffle plates and vent holes in the cover to ensure sufficient convection currents. Make sure that

the heater is mounted so that the mounting label located on the back panel points up as shown in Figure 1. The end covers will be at the top and bottom of the heater with the terminal access at the bottom end. **WARNING: Never recess heater into wall.**

Not Suitable for household or residential use.  
Do not cover.  
Keep combustible materials away from heater.

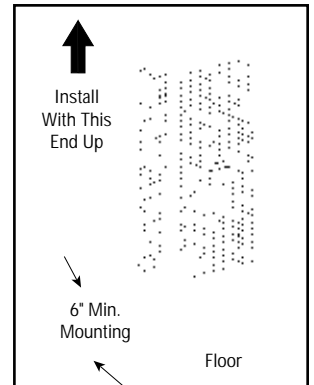


Figure 1 — Mounting

### MOUNTING

**WARNING: Hazard of Shock. Disconnect all power before installing heater.**

- Locate heater position on wall.
- To locate mounting holes, see Specifications Table for heater in question. In standard 16" stud center frame construction, locate wall studding and locate 1 upper and 1 lower mounting hole in center of stud.
- Drill a pilot hole in metal or wood surfaces using a convenient small size drill.
- Drill the 4 holes in accordance with sizes in Table 1. Insert anchors where applicable.
- Remove cover screws.
- Remove cover.
- Fasten to wall with screws as listed in Table 1. Turn tight then back off 1/2 turn, to allow for expansion and contraction.
- Replace heater cover-fasten with screws and washers removed in Step 5.

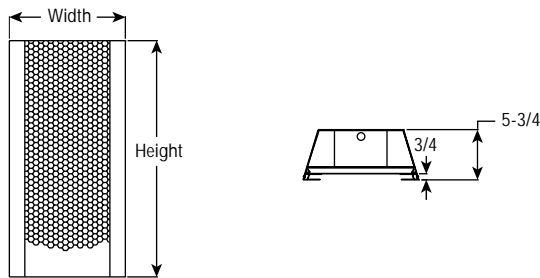
Table 1 — Suggested Heater Mounting Screws (Types and Sizes)

Type Mounting Surface	** Accessory Hardware	Screw Type	Drill Size and Type	Screw Size to Fit Hole Size In Heater Mounting Plates	
				Terminal End	Opposite End
Concrete, Block Masonry	Ackerman	Rd. Hd. Mach. Steel	1/2" Masonry	1/4 x 20 x 3"	1/4 x 20 x 2"
	Lead Anchor	Rd. Hd Mach. Steel or Pan Hd. Metal (Self-Tapping)	3/8" Masonry	#14 x 3"	#14 x 2"
Wood Studs	—	Wood or Metal (Self-Tapping)	—	#14 x 3"	#14 x 2"
Plaster Wall Hollow or Similar Type	—	Toggle Bolt	#7	1/4 x 4"	1/4 x 3"
*Metal Beam, Channel, etc.	Nuts, Washers	Rd. Hd. Mach. Steel	#7 Twist	1/4 x 20 x 1-11/16"	1/4 x 20 x 13/16"

\* If clearance permits, use lockwasher and nut; otherwise, drill and tap. To these lengths add thickness of beam, washers, nut etc.

\*\* If mounting structure permits, except plastered hollow walls, explosive type anchors can be used. Suggest sizes noted in Table and/or sketches to be used to determine size of anchors.

## MOUNTING



### Heater Mounting —

Model	Dimensions (In.)		
	Height	Width	Depth
V-2020	27	12-3/4	5-3/4
V-2030	27	12-3/4	5-3/4
V-2040	27	17-3/4	5-3/4

## WIRING

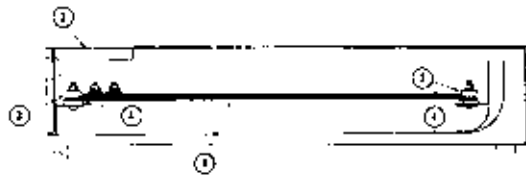
**WARNING: Hazard of Shock.** Any installation involving electric heaters must be effectively grounded in accordance with the National Electrical Code to eliminate shock hazard.

**Note:** All wiring should be done in accordance with local codes and the

National Electrical Code by a qualified person as defined in the NEC.

1. Electrical wiring enters heater case through 7/8" opening in end of heater.
2. Grounding conductor, with green insulation, should be secured to grounding screw located on case.

## RENEWAL PARTS IDENTIFICATION



Type V			1 Heating Element (Iron Sheath)	2 Heater Cover (Prefix 152-)	3 Insulating Bushing (Prefix 032-)	4 Insulating Bushing (Prefix 032-)	Wire Sizes (90° C Min)	Wiring Diagram Fig No.
Model	Volts	Watts						
V-2020	240	2000	SE-2450 240V 500W (4)	108259-001	010978-001 (8)	010978-002 (8)	#16	1
V-2030	240	3000	SE-2475 240V 750W (4)	108259-001	010978-001 (8)	010978-002 (8)	#16	1
V-2030	480	3000	SE-2475 240V 750W (4)	108259-001	010978-001 (8)	010978-002 (8)	#16	2
V-2040	240	4500	SE-2475 240V 750W (6)	108259-002	010978-001 (12)	010978-002 (12)	#14	1
V-2040	480	4500	SE-2475 240V 750W (6)	108259-002	010978-001 (12)	010978-002 (12)	#16	2

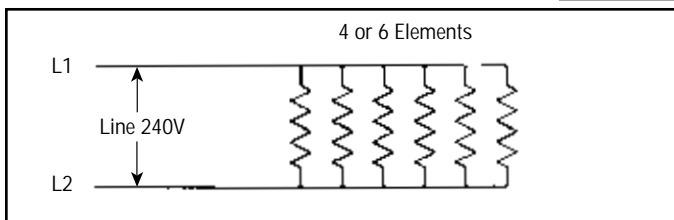


Figure 1 — 240 Volt Heaters

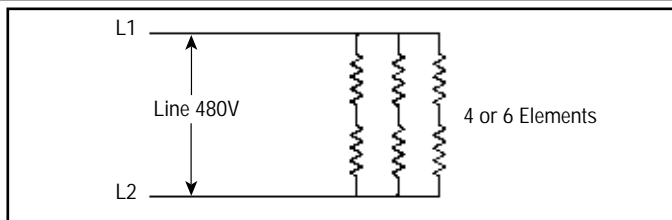


Figure 2 — 480 Volt Heaters

## OPERATION

**WARNING: Hazard of fire or discoloration of temperature sensitive fabrics.** Keep combustible materials and such fabrics at least 4" away from front of cover or above cover.

**DANGER: Hazard of Fire.** This heater is not intended for

use in hazardous atmospheres where flammable vapors, gases, liquids or other combustible atmospheres are present as defined in the National Electrical Code. Failure to comply can result in explosion or fire.

## MAINTENANCE

1. **WARNING: Hazard of Shock.** Disconnect all power before attempting to service this heater.
2. Following long periods of idleness, heater should be vacuumed before start-up to remove accumulated combustible particles which will incinerate causing smoking and consequent wall discoloration.
3. If heater is located in areas of heavy traffic, furnish suitable heater guard (wall mounted pipe rail in front of case, for example) to prevent damage to heater.

### WARRANTY AND LIMITATION OF REMEDY AND LIABILITY

Chromalox warrants only that the Products and parts manufactured by Chromalox, when shipped, and the work performed by Chromalox when performed, will meet all applicable specification and other specific product and work requirements (including those of performance), if any, and will be free from defects in material and workmanship under normal conditions of use. All claims for defective or nonconforming (both hereinafter called defective) Products, parts or work under this warranty must be made in writing immediately upon discovery, and in any event, within one (1) year from delivery, provided, however all claims for defective Products and parts must be made in writing no later than eighteen (18) months after shipment by Chromalox. Defective and nonconforming items must be held for Chromalox's inspections and returned to the original f.o.b. point upon request. THE FOREGOING IS EXPRESSLY IN LIEU OF ALL OTHER WARRANTIES WHATSOEVER, EXPRESS, IMPLIED AND STATUTORY, INCLUDING, WITHOUT LIMITATION, THE IMPLIED WARRANTIES OF MERCHANTABILITY AND FITNESS FOR A PARTICULAR PURPOSE.

Notwithstanding the provisions of this WARRANTY AND LIMITATION Clause, it is specifically understood that Products and parts not manufactured and work not performed by Chromalox are warranted only to the extent and in the manner that the same are warranted to Chromalox by Chromalox's vendors, and then only to the extent that Chromalox is reasonably able to enforce such warranty, it being understood Chromalox shall have no obligation to initiate litigation unless Buyer undertakes to pay all cost and expenses therefor, including but not limited to attorney's fees, and indemnifies

Chromalox against any liability to Chromalox's vendors arising out of such litigation.

Upon Buyer's submission of a claim as provided above and its substantiation, Chromalox shall at its option either (i) repair or replace its Products, parts or work at the original f.o.b. point of delivery or (ii) refund an equitable portion of the purchase price.

THE FOREGOING IS CHROMALOX'S ONLY OBLIGATION AND BUYER'S EXCLUSIVE REMEDY FOR BREACH OF WARRANTY, AND IS BUYER'S EXCLUSIVE REMEDY AGAINST CHROMALOX FOR ALL CLAIMS ARISING HEREUNDER OR RELATING HERETO WHETHER SUCH CLAIMS ARE BASED ON BREACH OF CONTRACT, TORT (INCLUDING NEGLIGENCE AND STRICT LIABILITY) OR OTHER THEORIES, BUYER'S FAILURE TO SUBMIT A CLAIM AS PROVIDED ABOVE SHALL SPECIFICALLY WAIVE ALL CLAIMS FOR DAMAGES OR OTHER RELIEF, INCLUDING BUT NOT LIMITED TO CLAIMS BASED ON LATENT DEFECTS. IN NO EVENT SHALL BUYER BE ENTITLED TO INCIDENTAL OR CONSEQUENTIAL DAMAGES AND BUYER SHALL HOLD CHROMALOX HARMLESS THEREFROM. ANY ACTION BY BUYER ARISING HEREUNDER OR RELATING HERETO, WHETHER BASED ON BREACH OF CONTRACT, TORT (INCLUDING NEGLIGENCE AND STRICT LIABILITY) OR OTHER THEORIES, MUST BE COMMENCED WITHIN ONE (1) YEAR AFTER THE DATE OF SHIPMENT OR IT SHALL BE BARRED.

W2008M

**Chromalox**  
**PRODUCT SERVICE**  
 2150 N. RULON WHITE BLVD., OGDEN, UT 84404  
 Phone: 1-800-368-2493

WIEGAND INDUSTRIAL DIVISION  
 EMERSON ELECTRIC CO.

