

PRODUCT INFORMATION PACKET



Model No: RF6403
Catalog No: RF6403

Refrigeration Motor, 1/10 HP, 1 Ph, 60 Hz, 115/208-230 V, 1050/900 RPM, 1 Speed, 42 Frame, OPEN



Regal and Century are trademarks of Regal Rexnord Corporation or one of its affiliated companies.

©2023 Regal Rexnord Corporation, All Rights Reserved. MC017097E





Nameplate Specifications

Phase	1	Output HP	1/10 Hp
Output KW	0.07 kW	Voltage	115/208-230 V
Speed	1050/900 rpm	Service Factor	1
Frame	42Y	Enclosure	Open Enclosed
Thermal Protection	Automatic	Ambient Temperature	40 °C
Frequency	60 Hz	Current	4.0/2.0 A
Duty	Air Over	Insulation Class	A
UL	No	CSA	Y
CE	N	Number of Speeds	1

Technical Specifications

Electrical Type	Shaded Pole	Starting Method	Across The Line
Poles	6	Rotation	Counterclockwise Lead End
Mounting	Extended Studs	Motor Orientation	Any
Drive End Bearing	Sleeve	Opp Drive End Bearing	Sleeve
Frame Material	Na	Shaft Type	Flat
Overall Length	7.17 in	Shaft Diameter	0.375 in
Shaft Extension	2.25 in		
Outline Drawing	RF6403-S01	Connection Drawing	7571A67F01

This is an uncontrolled document once printed or downloaded and is subject to change without notice. Date Created:05/31/2023

GENERAL INFORMATION:

SHAFT RUNOUT: .001[.03] T.I.R. PER INCH LENGTH OF EXTENSION.

END PLAY: .010 TO .063 [.25 TO 1.60]

BEARINGS: SLEEVE

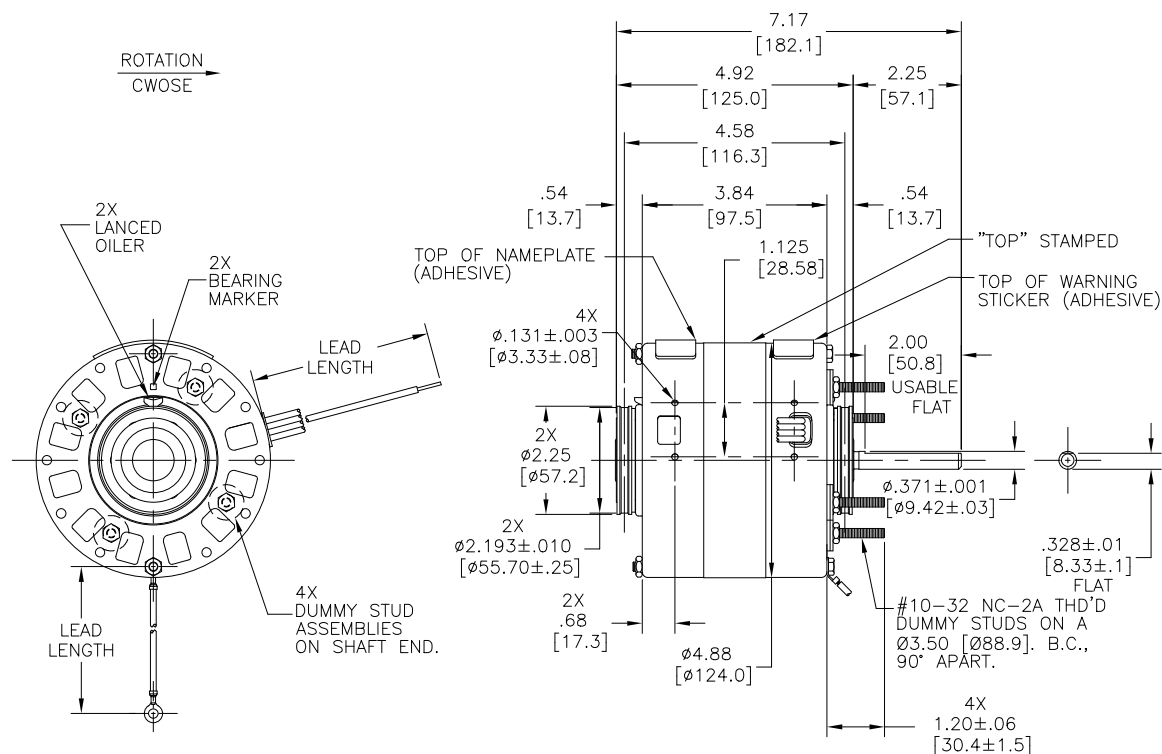
MOUNTING POSITION: ALL ANGLE

ELECTRICAL DATA:

OVERLOAD PROTECTOR: AUTOMATIC RESET (SENSATA 7AM 034)

LINE LEADS: NO. 18 GA, .06 [1.5] THK., 125°C INSUL.

GROUND LEAD: NO. 18 GA, .03 [.8] THK., GREEN INSUL.



NOTES:

- (1) MTG. BASE
 - (2) MTG. CLAMP ASSEMBLIES
 - (1) SHAFT ADAPTER
 - (4) MTG. RING ADAPTORS
 - (4) HEX NUTS
- TO BE SHIPPED SEPARATELY IN EACH CARTON WITH MOTOR.

NAMEPLATE DATA:	EXTERNAL CONNECTION DIAGRAM
MODEL NO.: 326P192 CUST. P/N: RF6403 HP: 1/10 ROT.: CCWLE RPM: 1050 TYPE: FE FRAME: 42Y VOLTS: 115/208-230 PH: 1 AMPS: 4.0/2.0 HZ: 60/50 INS.: A AMB.: 40° C DUTY: AIR OVER CAP.: - ENCL.: - UL LOGO CSA LOGO THERMALLY PROTECTED TYPE C	

COLOR	LENGTH	TERMINAL OR STRIP LENGTH
GREEN(GRD)	11.5/12.5 [292/318]	#8 EYELET
RED	29/31 [737/787]	.50 [12.7] SKIN
BLUE	29/31 [737/787]	.50 [12.7] SKIN
BLACK	29/31 [737/787]	.50 [12.7] SKIN
YELLOW	29/31 [737/787]	.50 [12.7] SKIN

MAIN FRAME - OLE	ENCLOSED
END FRAME - OLE	OPEN
MAIN FRAME - LE	ENCLOSED
END FRAME - LE	OPEN

PERFORMANCE CURVE NO.	TORQUE @ 1050 RPM (25°C)	APPROVED SAMPLE	UL COMPONENT				CSA	
			FILE #	CCN #	FILE #	CLASS #		
C30340	10.8 OZ-FT.	89AC117A	E27885	XEWR2	LR43341	4211-01		

DRAWING REVISION	REVISION BY	DATE
E00	J. RUPERT	05-25-2023
ECO-0225966	J. RUPERT	05-25-2023

ECO DESCRIPTION
CHANGED UL FILE NUMBER

COPYRIGHT REGAL BELOIT AMERICA, INC. ALL RIGHTS RESERVED. PROPRIETARY AND CONFIDENTIAL INFORMATION - THIS DOCUMENT IS THE PROPERTY OF REGAL BELOIT AMERICA, INC. (OWNER) AND CONTAINS OWNER'S PROPRIETARY INFORMATION. ANY PERSON, CORPORATION OR OTHER ENTITY, DUPLICATED, AND/OR USED, EXCEPT BY RECEIVING IT, TO AGREE THAT IT, AND/OR ANY PART OF IT, SHALL NOT BE DISCLOSED TO ANY PERSON, CORPORATION OR OTHER ENTITY, DUPLICATED, AND/OR USED, EXCEPT AS EXPRESSLY APPROVED IN WRITING IN ADVANCE BY OWNER. THIS DOCUMENT SHALL BE RETURNED TO OWNER UPON REQUEST. IT MAY BE SUBJECT TO CERTAIN RESTRICTIONS UNDER APPLICABLE EXPORT CONTROL LAWS AND REGULATIONS.

ENCLOSURE		CUSTOMER	DISTRIBUTION SERVICES
DRAWN BY: W. CORTEZ	DATE: 05-23-2013		
APPROVED BY: J. DE LUNA	DATE: 05-23-2013		
REFERENCE	MATERIAL	PROCESS/FINISH	
THIRD ANGLE PROJECTION	SIZE C	DWG NO. RF6403	SHEET 1

REGAL™ Regal Beloit America, Inc.

MODEL-RFHP-42FR
OUTLINE