

# PRODUCT INFORMATION PACKET



Model No: RB1154AV1  
Catalog No: RB1154AV1

Fan and Blower Motor, 1 1/2 HP, 1 Ph, 60 Hz, 115/208-230 V, 1800 RPM, 56H Frame, OPEN



Regal and Century are trademarks of Regal Rexnord Corporation or one of its affiliated companies.

©2023 Regal Rexnord Corporation, All Rights Reserved. MC017097E





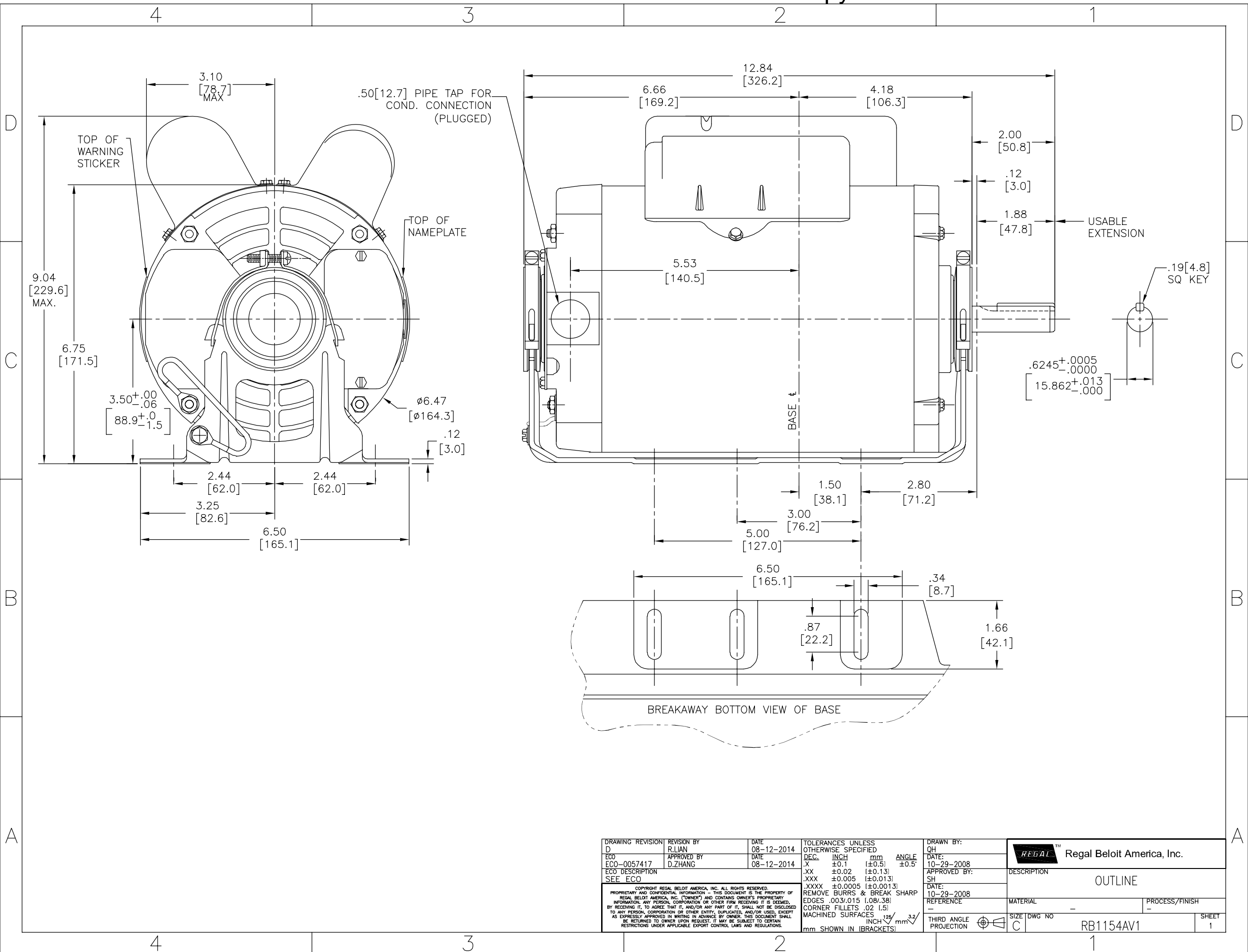
### Nameplate Specifications

Phase	1	Output HP	1 1/2 Hp
Output KW	1.1 kW	Voltage	115/208-230 V
Speed	1725/1425 rpm	Service Factor	1.20
Frame	56H	Enclosure	Open Enclosed
Thermal Protection	Automatic	Ambient Temperature	40 °C
Frequency	60 Hz	Current	17/8.5 A
Duty	Continuous	Insulation Class	B
UL	No	CSA	Y
CE	N	Number of Speeds	1

### Technical Specifications

Electrical Type	Capacitor Start Capacitor Run	Starting Method	Across The Line
Poles	4	Rotation	Reversible
Mounting	Resilient Base	Drive End Bearing	Ball
Opp Drive End Bearing	Ball	Frame Material	Rolled Steel
Shaft Type	Keyed	Overall Length	12.84 in
Frame Length	7.69 in	Shaft Diameter	0.625 in
Shaft Extension	2 in		
Connection Drawing	620005-056C	Outline Drawing	RB1154AV1-S01

This is an uncontrolled document once printed or downloaded and is subject to change without notice. Date Created:07/17/2023



DRAWING REVISION D	REVISION BY R.LIAN	DATE 08-12-2014	TOLERANCES UNLESS OTHERWISE SPECIFIED DEC. INCH mm ANGLE	DRAWN BY: QH	Regal Beloit America, Inc.	
ECO ECO-0057417	APPROVED BY D.ZHANG	DATE 08-12-2014	.X ±0.1 [±0.5] ±0.5° .XX ±0.02 [±0.13] .XXX ±0.005 [±0.013] .XXXX ±0.0005 [±0.0013]	DATE: 10-29-2008		DESCRIPTION OUTLINE
ECO DESCRIPTION SEE ECO			REMOVE BURRS & BREAK SHARP EDGES .003/.015 [0.08/.38] CORNER FILLETS .02 [1.5] MACHINED SURFACES $\frac{125}{\text{INCH}}$ $\frac{3.2}{\text{mm}}$	APPROVED BY: SH	MATERIAL	PROCESS/FINISH
<small>COPYRIGHT REGAL BELOIT AMERICA, INC. ALL RIGHTS RESERVED. PROPRIETARY AND CONFIDENTIAL INFORMATION - THIS DOCUMENT IS THE PROPERTY OF REGAL BELOIT AMERICA, INC. (OWNER) AND CONTAINS OWNER'S PROPRIETARY INFORMATION. ANY PERSON, CORPORATION OR OTHER FIRM RECEIVING IT IS DEEMED, BY RECEIVING IT, TO AGREE THAT IT, AND/OR ANY PART OF IT, SHALL NOT BE DISCLOSED TO ANY PERSON, CORPORATION OR OTHER ENTITY, DUPLICATED, AND/OR USED, EXCEPT AS EXPRESSLY APPROVED IN WRITING IN ADVANCE BY OWNER. THIS DOCUMENT SHALL BE RETURNED TO OWNER UPON REQUEST. IT MAY BE SUBJECT TO CERTAIN RESTRICTIONS UNDER APPLICABLE EXPORT CONTROL LAWS AND REGULATIONS.</small>			THIRD ANGLE PROJECTION	DATE: 10-29-2008	MATERIAL	PROCESS/FINISH
				REFERENCE	SIZE DWG NO C RB1154AV1	SHEET 1