

PRODUCT INFORMATION PACKET



Model No: RB1054AV1
Catalog No: RB1054AV1
1/2 HP Fan and Blower HVAC/R Motor, 1 phase, 1800 RPM, 115/230 V, 56 Frame, OPEN
Fan and Blower Motors



Regal and Century are trademarks of Regal Rexnord Corporation or one of its affiliated companies.
©2021 Regal Rexnord Corporation, All Rights Reserved. MC017097E





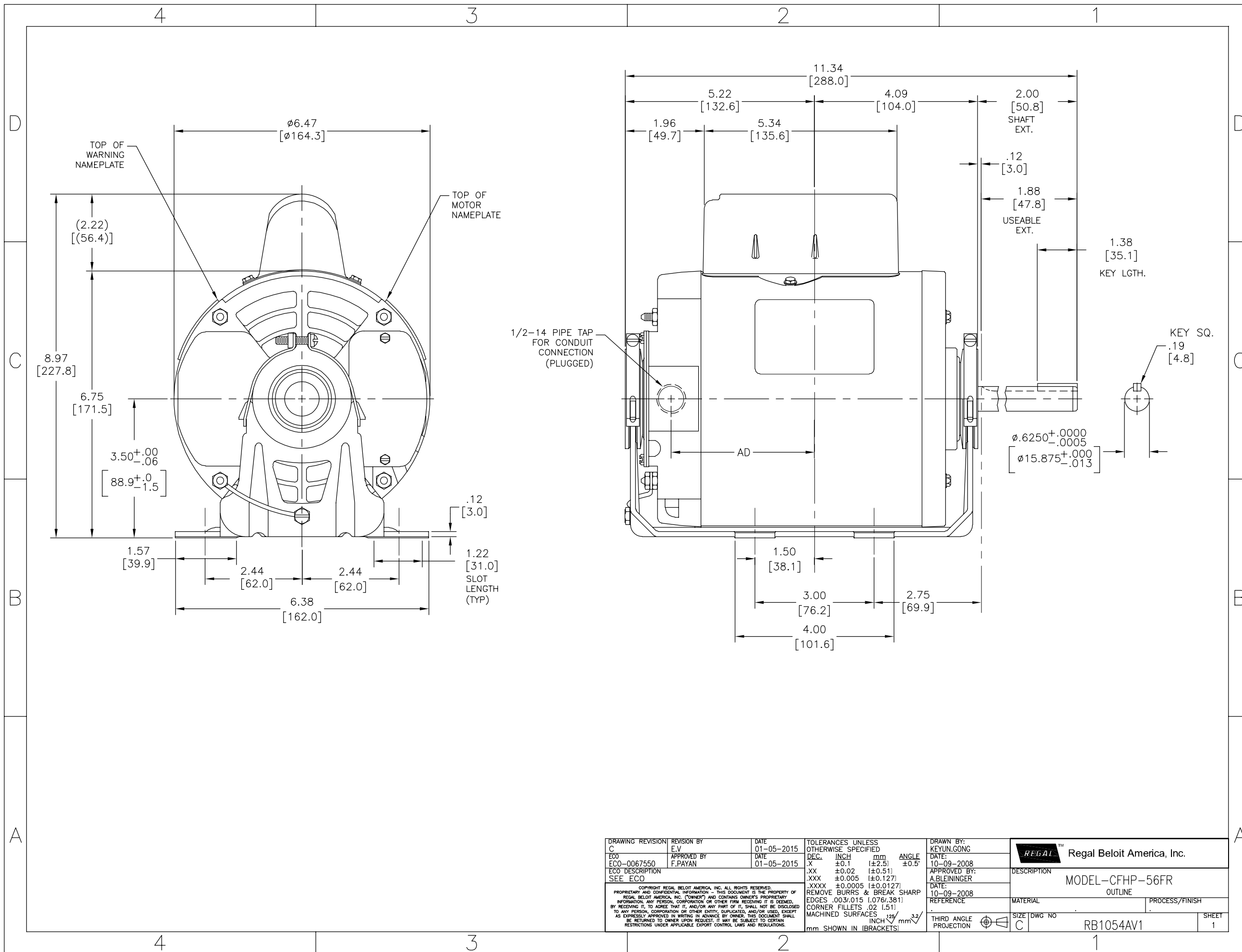
Nameplate Specifications

Output HP	1/2 Hp	Output KW	0.37 kW
Frequency	60 Hz	Voltage	115/230 V
Current	8.8/4.4 A	Speed	1725/1425 rpm
Service Factor	1.25	Phase	1
Duty	Continuous	Insulation Class	B
Frame	56	Enclosure	Open Enclosed
Thermal Protection	Automatic	Ambient Temperature	40 °C
UL	No	CSA	Y
CE	N	Number of Speeds	1

Technical Specifications

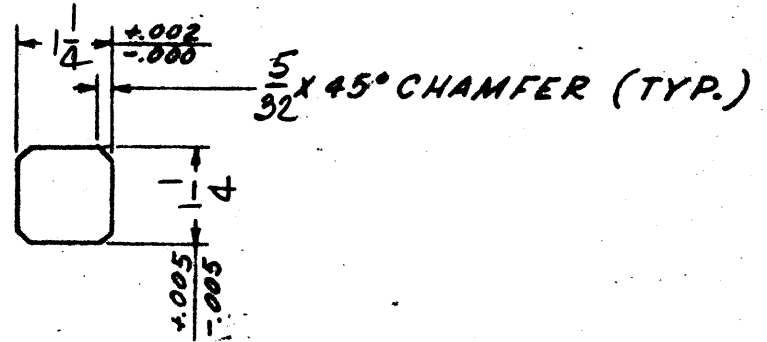
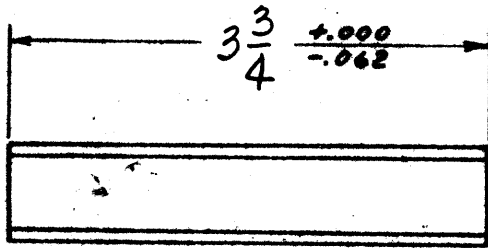
Electrical Type	Capacitor Start Induction Run	Starting Method	Across The Line
Poles	4	Rotation	Reversible
Mounting	Resilient Base	Drive End Bearing	Ball
Opp Drive End Bearing	Ball	Frame Material	Rolled Steel
Shaft Type	Keyed	Overall Length	11.34 in
Frame Length	6.19 in	Shaft Diameter	0.625 in
Shaft Extension	2 in		
Outline Drawing	RB1054AV1-S01	Connection Drawing	619785-008C

This is an uncontrolled document once printed or downloaded and is subject to change without notice. Date Created:10/07/2021



DRAWING REVISION C	REVISION BY E.V.	DATE 01-05-2015	TOLERANCES UNLESS OTHERWISE SPECIFIED	DRAWN BY: KEYUN.GONG	Regal Beloit America, Inc.
ECO ECO-0067550	APPROVED BY F.PAYAN	DATE 01-05-2015	DEC. INCH mm ANGLE X ±0.1 [±2.5] ±0.5° .XX ±0.02 [±0.51] .XXX ±0.005 [±0.127] .XXXX ±0.0005 [±0.0127]	DATE: 10-09-2008	
SEE ECO			REMOVE BURRS & BREAK SHARP EDGES .003/015 [0.076/381] CORNER FILLETS .02 [1.51] MACHINED SURFACES $\sqrt{.25}$ INCH $\sqrt{.25}$ mm	APPROVED BY: A.BLEININGER	DESCRIPTION MODEL-CFHP-56FR OUTLINE
<small>COPYRIGHT REGAL BELOIT AMERICA, INC. ALL RIGHTS RESERVED. PROPRIETARY AND CONFIDENTIAL INFORMATION - THIS DOCUMENT IS THE PROPERTY OF REGAL BELOIT AMERICA, INC. (OWNER) AND CONTAINS OWNER'S PROPRIETARY INFORMATION. ANY PERSON, CORPORATION OR OTHER FIRM RECEIVING IT IS DEEMED, BY RECEIVING IT, TO AGREE THAT IT, AND/OR ANY PART OF IT, SHALL NOT BE DISCLOSED TO ANY PERSON, CORPORATION OR OTHER ENTITY, DUPLICATED, AND/OR USED, EXCEPT AS EXPRESSLY APPROVED IN WRITING IN ADVANCE BY OWNER. THIS DOCUMENT SHALL BE RETURNED TO OWNER UPON REQUEST. IT MAY BE SUBJECT TO CERTAIN RESTRICTIONS UNDER APPLICABLE EXPORT CONTROL LAWS AND REGULATIONS.</small>				DATE: 10-09-2008	MATERIAL
				REFERENCE	PROCESS/FINISH
				THIRD ANGLE PROJECTION	SIZE DWG NO
					RB1054AV1
					SHEET 1

REVISIONS							SUPERSEDED BY		LIMITS UNLESS NOTED	
SYM.	REQ. CHGS.	DESCRIPTION	E.C. NO.	BY	DATE	CHKD.	SUPERSEDES			
									FRACTIONAL DIMENSIONS BETWEEN FINISHED SURFACES ± .015 BETWEEN UNFINISHED SURFACES ± .050 BETWEEN FINISHED AND UNFINISHED SURFACES ± .040 BREAK ALL SHARP EDGES .015 MAX. ANGLES ± 1/2°	



MAT'L = KEYSTOCK

SCANNED
 "A-SIZE DRAWING"

SCALE <i>NONE</i>	DATE	GEAR PRODUCTS OPERATIONS HEWITT-ROBINS <small>INCORPORATED</small> A DIVISION OF LITTON INDUSTRIES	KEY-SPECIAL CHAMFERED INT.	DWG. SIZE	795619785	REV.
DRAWN BY <i>D</i>	<i>9-5-69</i>			<i>A</i>		
CHECKED BY						
APPROVED BY						