

PRODUCT INFORMATION PACKET

Model No: RAL1026A

Catalog No: RAL1026A

1/4 HP Fan Coil / Room Air Conditioner Motor, 1075 RPM, 3 Speed, 115 Volts, 48 Frame, Semi Enclosed



Regal and are trademarks of Regal Rexnord Corporation or one of its affiliated companies.
©2022 Regal Rexnord Corporation, All Rights Reserved. MC017097E

Nameplate Specifications

| | | | |
|--------------------|------------|---------------------|---------------|
| Output HP | 1/4 Hp | Output KW | 0.19 kW |
| Frequency | 60 Hz | Voltage | 115 V |
| Current | 5.0 A | Speed | 1075 rpm |
| Service Factor | 1 | Phase | 1 |
| Duty | Air Over | Insulation Class | A |
| Frame | 48Y | Enclosure | Semi Enclosed |
| Thermal Protection | Automatic | Ambient Temperature | 40 °C |
| UL | Recognized | CSA | Y |
| CE | N | Number of Speeds | 3 |

Technical Specifications

| | | | |
|--------------------|-------------------------------|-----------------------|---------------------------|
| Electrical Type | Permanent Split Capacitor | Starting Method | Across The Line |
| Poles | 6 | Rotation | Counterclockwise Lead End |
| Mounting | Resilient Ring/Extended Studs | Motor Orientation | Horizontal |
| Drive End Bearing | Sleeve | Opp Drive End Bearing | Sleeve |
| Frame Material | Rolled Steel | Shaft Type | Flat |
| Overall Length | 24.00 in | Frame Length | 3.63 in |
| Shaft Diameter | 0.500 in | Shaft Extension | 9.88 x .5 x 9.88 in |
| Connection Drawing | 614131-106 | Outline Drawing | RAL1026A-S01 |

This is an uncontrolled document once printed or downloaded and is subject to change without notice. Date Created:03/22/2022

GENERAL INFORMATION:

SHAFT RUNOUT: .001 [.025] T.I.R. PER INCH LENGTH OF

END PLAY: .010 [.254] TO .063 [1.600]

BEARINGS: SLEEVE

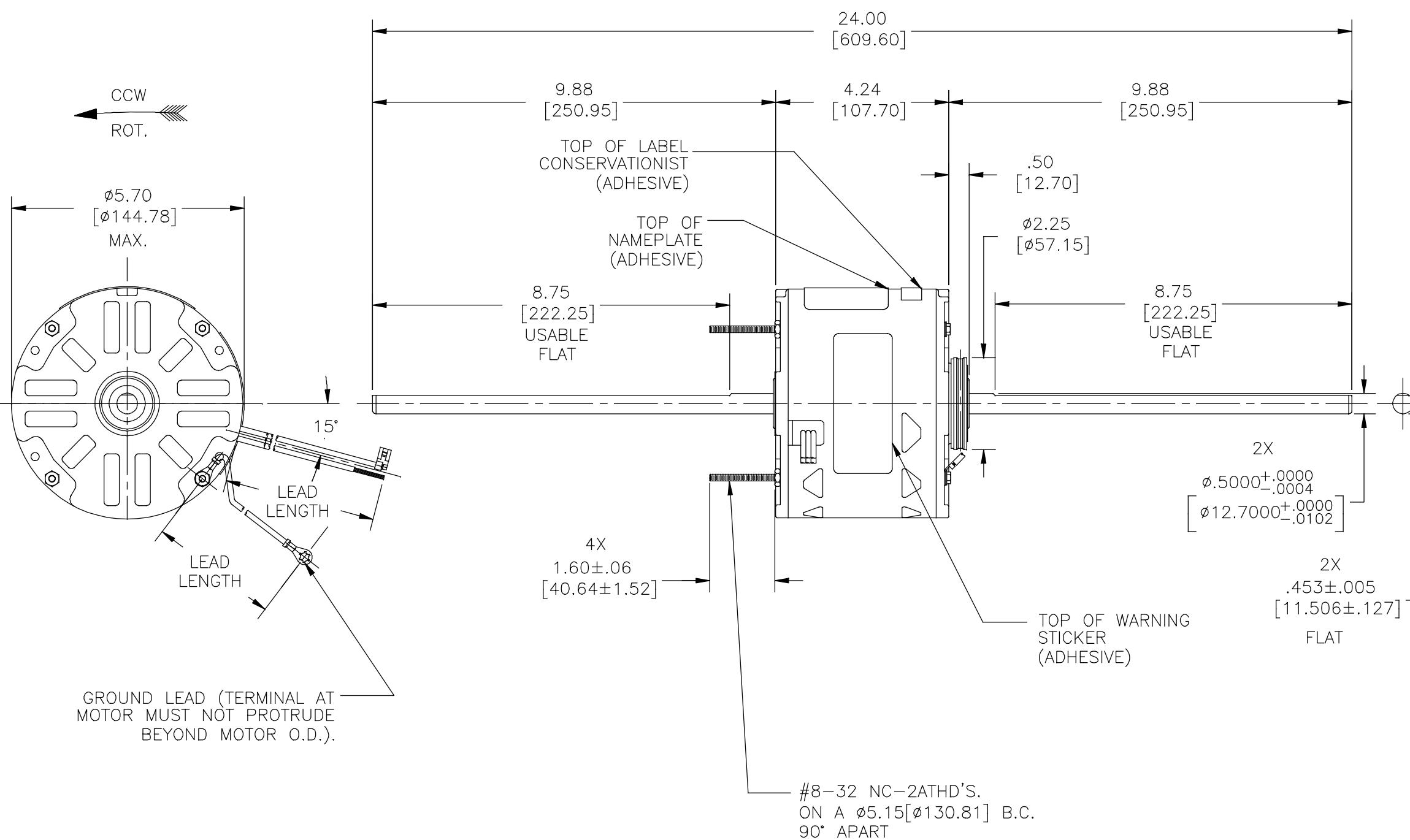
MOUNTING POSITION: HORIZONTAL

ELECTRICAL DATA:

OVERLOAD PROTECTOR: AUTOMATIC RESET (SENSATA 7AM 032)

LEADS: NO. 18 GA., .06 [1.52] THK., 105°C INSUL.

GROUND LEAD: NO. 18 GA., .03 [.76] THK. GREEN INSUL.



NOTE:
615059-001 RESILENT MOUNTING KIT TO BE PACKED WITH MOTOR.

| COLOR | LENGTH | TERMINAL OR STRIP LENGTH |
|-------------|-----------------|--------------------------|
| GREEN (GRD) | 37/39 [940/991] | #10 EYELET |
| BROWN/WHITE | 35/37 [889/940] | .25 [6.35] FLAG |
| BROWN | 35/37 [889/940] | .25 [6.35] FLAG |
| WHITE | 35/37 [889/940] | .60 [15.24] SKIN |
| BLACK | 35/37 [889/940] | .60 [15.24] SKIN |
| BLUE | 35/37 [889/940] | .60 [15.24] SKIN |
| RED | 35/37 [889/940] | .60 [15.24] SKIN |

REGAL-BELOIT CORPORATION (RBC) PROVIDES TECHNICAL ASSISTANCE TO OUR CUSTOMERS IN SEVERAL AREAS. SINCE RBC DOES NOT RECEIVE ALL DATA CONCERNING THE USE AND APPLICATION OF THE MOTOR, THE SUITABILITY OF THE MOTOR FOR THE APPLICATION MUST BE DETERMINED BY THE CUSTOMER.

DIMENSIONS WITHOUT TOLERANCES ARE FOR REFERENCE ONLY.

| | |
|------------------|-----------|
| MAIN FRAME - OLE | SEMI-ENCL |
| END FRAME - OLE | OPEN |
| MAIN FRAME - LE | SEMI-ENCL |
| END FRAME - LE | OPEN |

| | |
|----------|----------------------|
| CUSTOMER | DISTRIBUTION SERVICE |
|----------|----------------------|

| NAMEPLATE DATA: | EXTERNAL CONNECTION DIAGRAM |
|--|-----------------------------|
| MODEL NO.: F48AH17A01 CUST. P/N: RAL1026A HP: 1/4 ROT.: CCWLE RPM: 1075/3 SPD TYPE: UF FRAME: 48Y VOLTS: 115 PH: 1 AMPS: 5.0 HZ: 60 INS.: A AMB.: 40° C DUTY: AIR OVER CAP.: 5 MFD/370V ENCL: SEMI ENCL UL LOGO CSA LOGO THERMALLY PROTECTED | |

614131-106

| PERFORMANCE CURVE NO. | TORQUE @ 1075 RPM (25°C) | APPROVED SAMPLE | UL COMPONENT | | CSA | |
|-----------------------|--------------------------|-----------------|--------------|-------|---------|---------|
| | | | FILE # | CCN # | FILE # | CLASS # |
| C23749 | 25.0 OZ. FT. | EX11277-2 | E46412 | PRGY2 | LR43341 | 4211-01 |

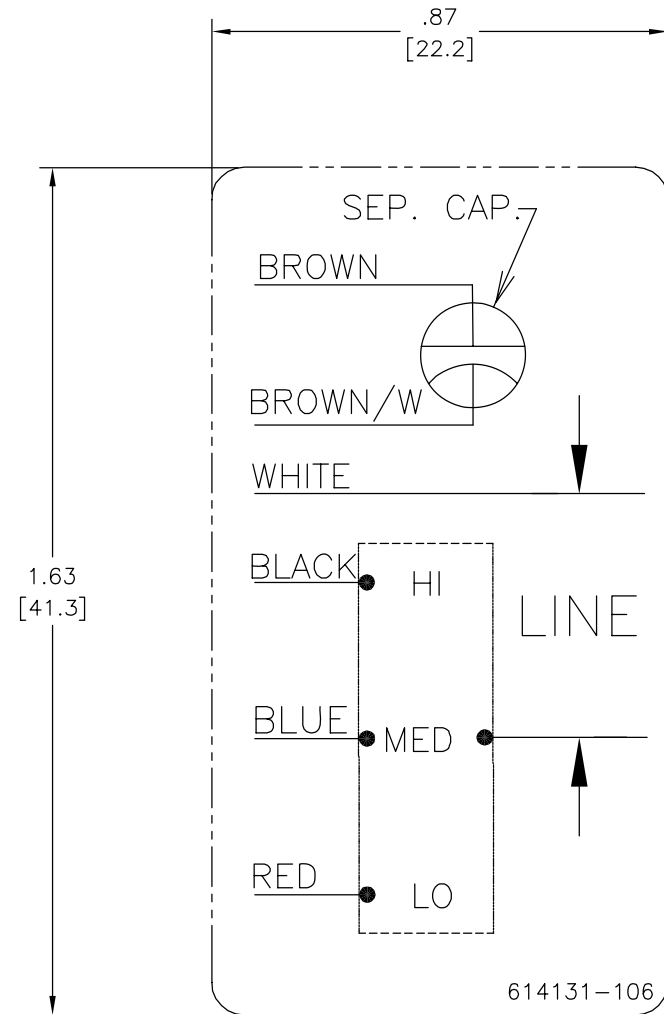
| DRAWING REVISION | REVISION BY | DATE |
|------------------|-------------|------------|
| C | J. RUPERT | 03-15-2019 |
| ECO | J. RUPERT | 03-15-2019 |

ECO-0163714
ECO DESCRIPTION
CHANGED THRU BOLT EXTENSION FROM 1.63

COPYRIGHT REGAL-BELOIT AMERICA, INC. ALL RIGHTS RESERVED. PROPRIETARY AND CONFIDENTIAL INFORMATION - THIS DOCUMENT IS THE PROPERTY OF REGAL-BELOIT AMERICA, INC. (OWNER) AND CONTAINS OWNER'S PROPRIETARY INFORMATION. ANY PERSON, CORPORATION OR OTHER FIRM RECEIVING IT IS DEEMED, BY RECEIVING IT, TO AGREE THAT IT, AND/OR ANY PART OF IT, SHALL NOT BE DISCLOSED TO ANY PERSON, CORPORATION OR OTHER ENTITY, DUPLICATED, AND/OR USED, EXCEPT AS EXPRESSLY APPROVED IN WRITING IN ADVANCE BY OWNER. THIS DOCUMENT SHALL BE RETURNED TO OWNER UPON REQUEST. IT MAY BE SUBJECT TO CERTAIN RESTRICTIONS UNDER APPLICABLE EXPORT CONTROL LAWS AND REGULATIONS.

| | | | |
|------------------------|------------------|--------------------------------------|-------------------|
| ENCLOSURE | | REGAL™ Regal Beloit America, Inc. | |
| DRAWN BY: C.ZHOU | DATE: 12-17-2015 | DESCRIPTION: MODEL-RFHP-48FR OUTLINE | |
| APPROVED BY: D.U. | DATE: 12-17-2015 | MATERIAL: - | PROCESS/FINISH: - |
| THIRD ANGLE PROJECTION | SIZE DWG NO: C | RAL1026A | SHEET 1 |

| | | | | | |
|-----|---------|--------|------------|------------|------------|
| REV | ECO | REV BY | DATE | APPD | DATE |
| C | 0019808 | PZ | 04-12-2011 | Tiger.Wang | 04-12-2011 |



NOTES:

1. FOR USE WITH 614129 OR 2513020-001 NAMEPLATE BLANKS
2. _____ INDICATES DIMENSION LIMITS

GEOMETRIC CHARACTERISTICS & SYMBOLS

- ▭ FLATNESS
- STRAIGHTNESS
- ∠ ANGULARITY
- ⊥ PERPENDICULARITY (SQUARENESS)
- // PARALLELISM
- ROUNDNESS (CIRCULARITY)
- ⊘ CYLINDRICITY
- △ PROFILE OF ANY SURFACE
- ∩ PROFILE OF ANY LINE
- ↗ RUNOUT
- ⊕ TRUE POSITION
- ◎ CONCENTRICITY
- ≡ SYMMETRY

UNLESS OTHERWISE SPECIFIED
DIM. TOLERANCES ARE AS FOLLOWS:

| | | | | |
|------|------|-------|--------|--------|
| INCH | ±.1 | ±.02 | ±.005 | ±.0005 |
| mm | ±0.5 | ±0.13 | ±0.013 | |

ANG. ±.50 DEG
REMOVE BURRS & BREAK SHARP EDGES:
INCH .003-.015 mm 0.1-0.4
CORNER FILLETS TO:
INCH .020 mm 0.5
MACHINE SURFACES:
INCH 125 mm 3.2
METRIC DIMS. SHOWN IN [BRACKETS]

| | | |
|---|------------|-------------------------------------|
| DR BY: | PZ | 04-12-2011 |
| APPD: | Tiger.Wang | 04-12-2011 |
| THIRD ANGLE PROJECTION | | EDS DATE 02-22-2011 FORMAT REV F |
| CONFIDENTIAL: THIS DRAWING AND ITS INFORMATION ARE THE EXCLUSIVE AND CONFIDENTIAL PROPERTY OF A.O. SMITH CORP. AND ARE NOT TO BE DISCLOSED, DUPLICATED, DISTRIBUTED OR OTHERWISE USED WITHOUT THE WRITTEN CONSENT OF A.O. SMITH CORP. -ALL RIGHTS RESERVED. ASME Y14.5M 1994 | | |

| | |
|---------------------------------------|--|
| | ELECTRICAL PRODUCTS COMPANY <small>A DIVISION OF A. O. SMITH CORPORATION</small> |
| DESCRIPTION CONN DIAGRAM-NAMEPLATE | |
| SIZE C | DWG NO 614131-106 |
| SCALE NONE | SHEET 1 |

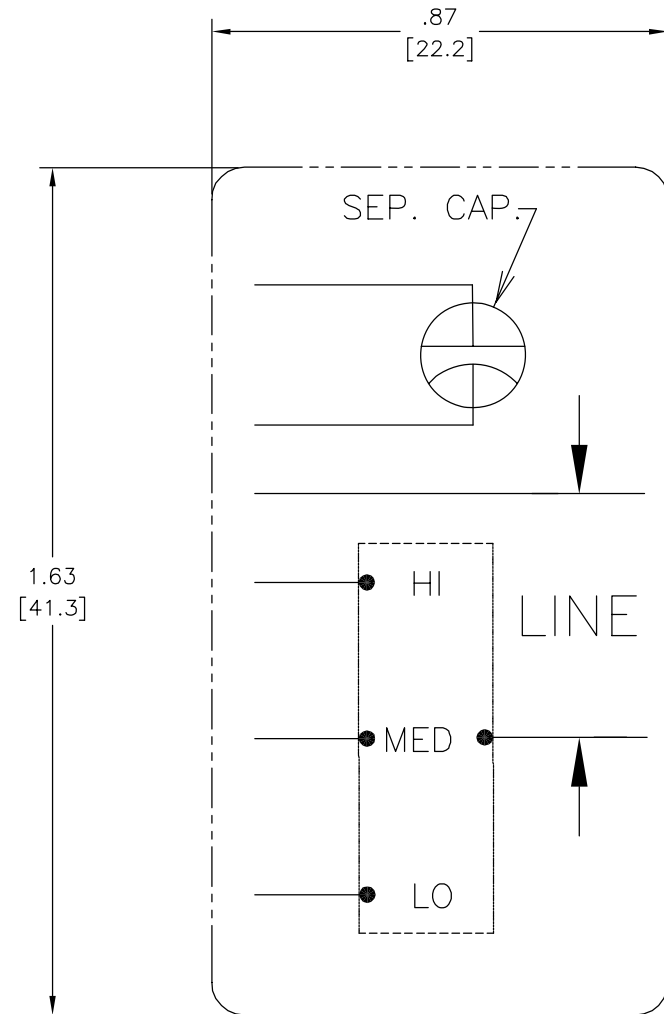
4

3

2

1

| | | | | | |
|-----------|---------|---------------|------------|---------------|------------|
| REVISION: | ECO | REVISADO POR: | FECHA: | APROBADO POR: | FECHA: |
| C | 0019808 | PZ | 04-12-2011 | Tiger.Wang | 04-12-2011 |



CARACTERISTICAS DE GEOMETRIA Y SIMBOLOS

- PLANICIDAD
- RECTITUD
- < ANGULARIDAD
- ⊥ PERPENDICULARIDAD (A ESCUADRA)
- // PARALELISMO
- REDONDEZ (CIRCULARIDAD)
- ∅ CILINDRICIDAD
- △ PERFIL DE CUALQUIER SUPERFICIE
- ∩ PERFIL DE CUALQUIER LINEA
- ↑ VARIACION
- ⊕ POSICION REAL
- ◎ CONCENTRICIDAD
- ≡ SIMETRIA

A MENOS QUE SE ESPECIFIQUE DE OTRA MANERA, LAS TOLERANCIAS DE LAS DIMS. SON LAS SIGUIENTES:

| | | | | |
|------|------|-------|--------|--------|
| | x | xx | xxx | xxxx |
| PULG | ±.1 | ±.02 | ±.005 | ±.0005 |
| mm | ±0.5 | ±0.13 | ±0.013 | |

ANG. ±.50 GRADOS
ELIMINAR REBABAS Y ORILLAS FILOSAS DEL BORDE.

| | | | |
|------|-----------|----|---------|
| PULG | .003-.015 | mm | 0.1-0.4 |
|------|-----------|----|---------|

FILETEAR ESQUINA: PULG .020 mm 0.5
MAQUINAR SUPERFICIES
PULG 125 mm 3.2

DIMS METRICAS MOSTRADAS [PARENTESIS]

| | | |
|--|------------|--|
| DIBUJADO POR: | PZ | 04-12-2011 |
| APROBADO POR: | Tiger.Wang | 04-12-2011 |
| TERCER ANGULO DE PROYECCION | ⊕ | FECHA EDS: 02-22-2011 REV. FORMATO: F |
| CONFIDENCIAL: ESTE DIBUJO Y SU INFORMACION SON PROPIEDAD DE USO EXCLUSIVO Y CONFIDENCIAL DE A.O.SMITH CORP. Y NO DEBERAN SER REVELADOS, DUPLICADOS, DISTRIBUIDOS O USARSE DE OTRA MANERA SIN EL CONSENTIMIENTO ESCRITO DE A.O. SMITH CORP. -TODOS LOS DERECHOS RESERVADOS.ASME Y14.5M 1994 | | |

| | | | |
|--|------------------------------|--|---------|
| AO Smith <small>Innovation has a name.</small> | | ELECTRICAL PRODUCTS COMPANY <small>A DIVISION OF A. O. SMITH CORPORATION</small> | |
| DESCRIPCION: | | | |
| TAMAÑO: C | NUMERO DE DIBUJO: 614131-106 | | |
| ESCALA: NONE | | | HOJA: 1 |

4

3

2

1

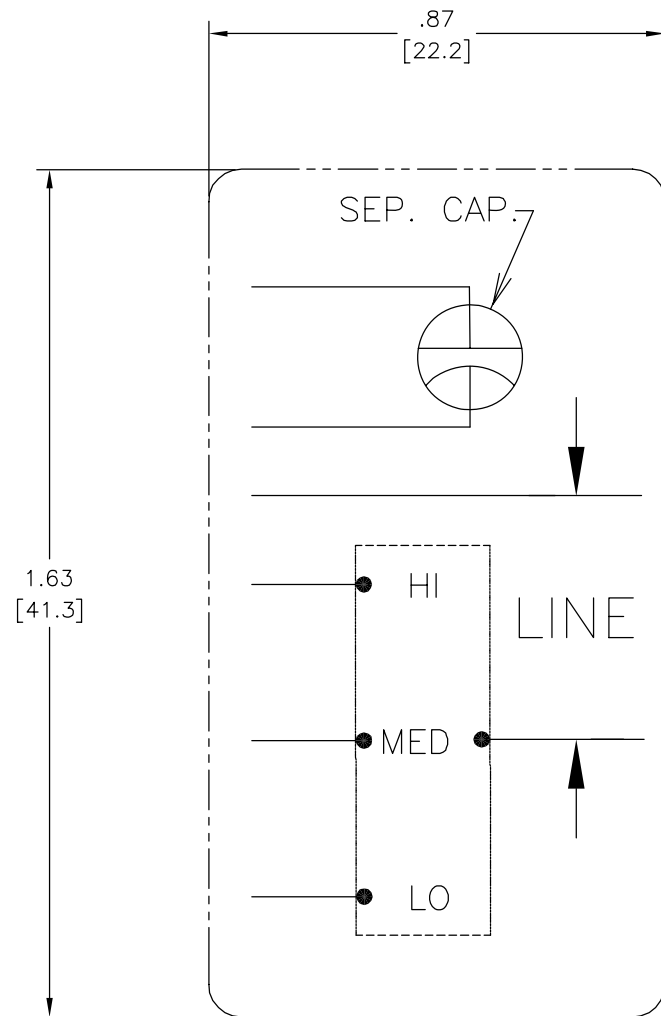
4

3

2

1

| | | | | | |
|----|---------|----|------------|------------|------------|
| 版本 | ECO | 编制 | 日期 | 批准 | 日期 |
| C | 0019808 | PZ | 04-12-2011 | Tiger.Wang | 04-12-2011 |



| |
|--------|
| 形位公差 |
| □ 平面度 |
| — 直线度 |
| ∠ 倾斜度 |
| ⊥ 垂直度 |
| // 平行度 |
| ○ 圆度 |
| ⊘ 圆柱度 |
| △ 面轮廓度 |
| ∩ 线轮廓度 |
| ↗ 圆跳动 |
| ⊕ 位置度 |
| ⊙ 同轴度 |
| ≡ 对称度 |

除另有注明
尺寸公差如下:
英寸 X XX XXX XXXX
毫米 ±.1 ±.02 ±.005 ±.0005
±0.5 ±0.13 ±0.013
角度 ±.50 度
清理毛刺和尖棱
英寸 .003-.015 毫米 0.1-0.4
内圆角
英寸 .020 毫米 0.5
表面粗糙度
英制 125 米制 3.2
米制尺寸显示在 []

| | | |
|---|------------|---------------------------------|
| 绘图: | PZ | 04-12-2011 |
| 批准: | Tiger.Wang | 04-12-2011 |
| 第三角投影 | | 图纸格式发布日期 02-22-2011 图纸格式版本 F |
| 机密: 本图纸及相关信息所有权归A. O. SMITH公司所有。 未经A. O. SMITH公司书面授权, 不得泄露、复制、传播或作 其他用途。—版权所有 | | |
| ASME Y14.5M 1994 | | |

| | | | |
|----|------|--|------------|
| | | ELECTRICAL PRODUCTS COMPANY <small>A DIVISION OF A. O. SMITH CORPORATION</small> | |
| 名称 | | | |
| 图幅 | C | 图号 | 614131-106 |
| 比例 | NONE | 页号 | 1 |

4

3

2

1