

# PRODUCT INFORMATION PACKET



Model No: PD6104AV2  
Catalog No: PD6104AV2  
1 HP Poultry Fan Motor, 1 phase, 1800 RPM, 115/230 V, 56 Frame, TEAO  
Poultry Fan Motors



Regal and Century are trademarks of Regal Rexnord Corporation or one of its affiliated companies.  
©2021 Regal Rexnord Corporation, All Rights Reserved. MC017097E





**Nameplate Specifications**

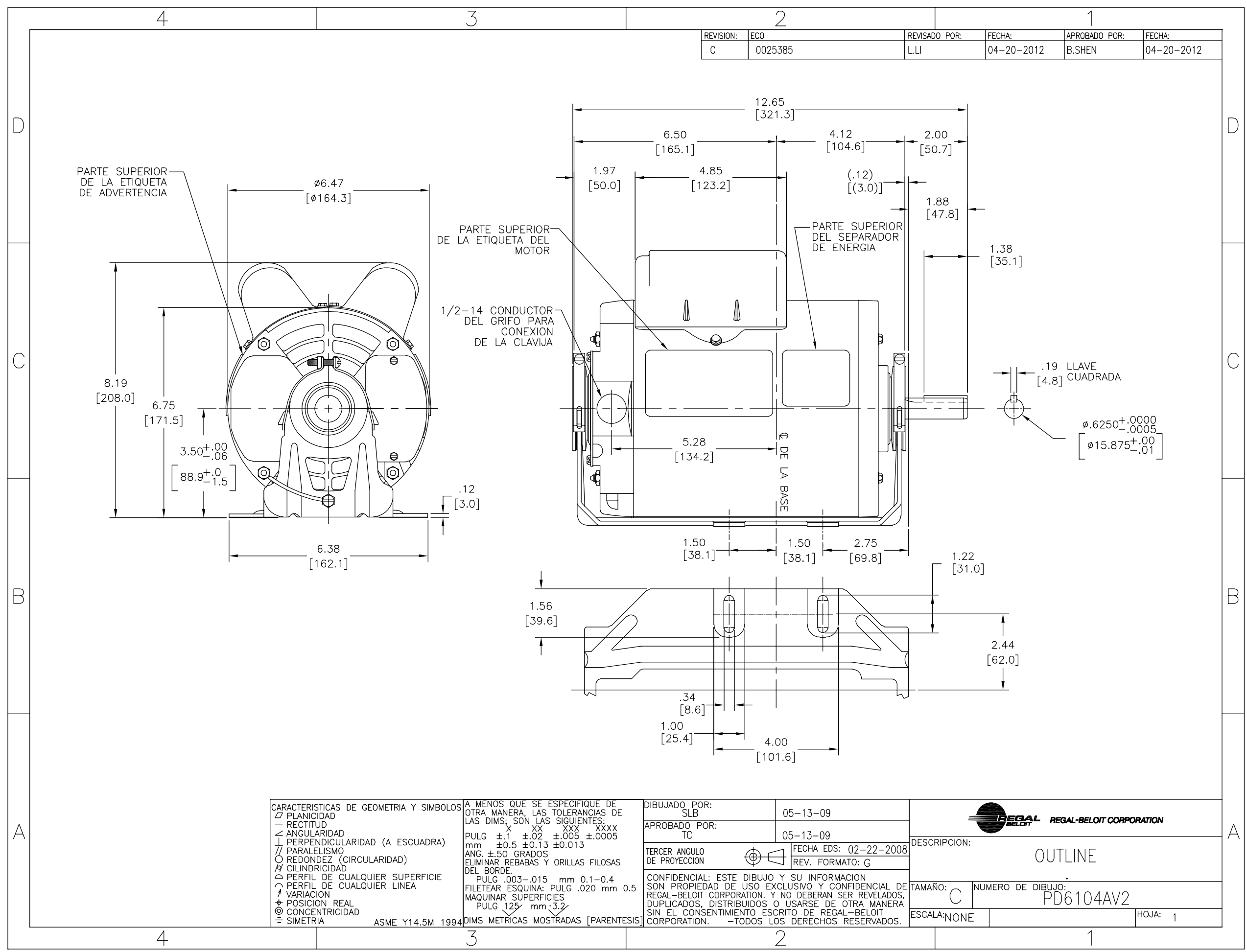
Output HP	1 Hp	Output KW	0.75 kW
Frequency	60/50 Hz	Voltage	115/230 V
Current	9.0/4.5 A	Speed	1725/1425 rpm
Service Factor	1.3	Phase	1
Duty	Continuous	Insulation Class	B
Frame	56	Enclosure	Totally Enclosed Air Over
Thermal Protection	Automatic	Ambient Temperature	40 °C
UL	No	CSA	Y
CE	N	Number of Speeds	1

**Technical Specifications**

Electrical Type	Capacitor Start Capacitor Run	Starting Method	Across The Line
Poles	4	Rotation	Reversible
Mounting	Resilient Base	Drive End Bearing	Ball
Opp Drive End Bearing	Ball	Frame Material	Rolled Steel
Shaft Type	Keyed	Overall Length	12.65 in
Frame Length	7.69 in	Shaft Diameter	0.625 in
Shaft Extension	1.88 in		
Outline Drawing	PD6104AV2-S01	Connection Drawing	2518940-S01

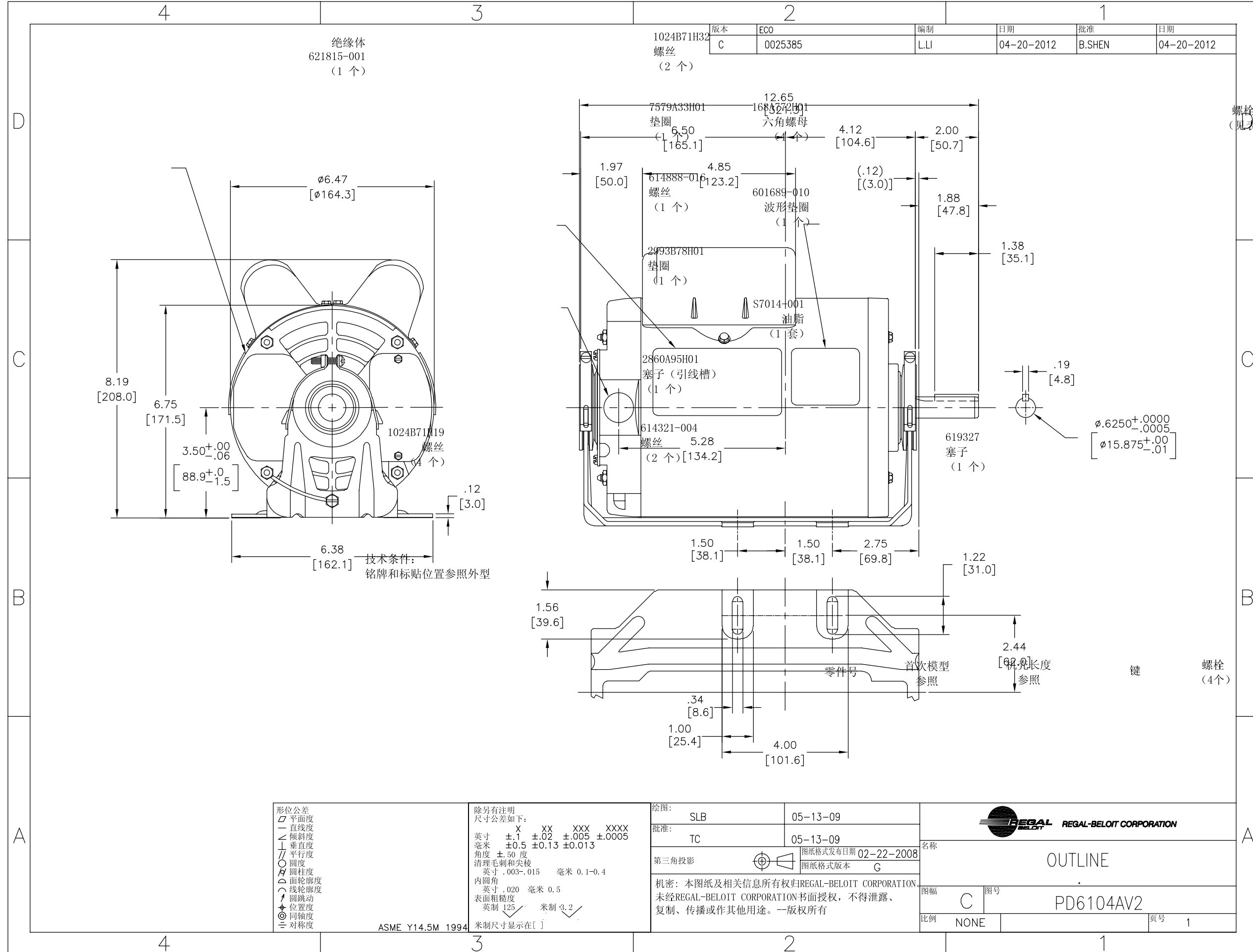
This is an uncontrolled document once printed or downloaded and is subject to change without notice. Date Created:10/07/2021





电容罩  
(见表)

装配详情参照LA 200



螺栓  
(见表)

键  
见表  
(1个)

601963  
键挡环  
(1个)

键  
螺栓  
(4个)

电容罩  
(1个)

形位公差	除另有注明 尺寸公差如下:
— 平面度	英寸 X ±.1 ±.02 ±.005 ±.0005
— 直线度	毫米 ±0.5 ±0.13 ±0.013
— 倾斜度	角度 ±.50 度
— 垂直度	清理毛刺和尖棱
— 平行度	英寸 .003-.015 毫米 0.1-0.4
— 圆柱度	内圆角
— 圆锥度	英寸 .020 毫米 0.5
— 圆跳动	表面粗糙度
— 位置度	英制 125 米制 3.2
— 同轴度	米制尺寸显示在 [ ]
— 对称度	

ASME Y14.5M 1994

绘图:	SLB	05-13-09
批准:	TC	05-13-09
第三角投影		
图纸格式发布日期	02-22-2008	
图纸格式版本	G	
机密: 本图纸及相关信息所有权归REGAL-BELOIT CORPORATION. 未经REGAL-BELOIT CORPORATION书面授权, 不得泄露、 复制、传播或作其他用途。一版权所有		

名称	
OUTLINE	
图幅	图号
C	PD6104AV2
比例	页号
NONE	1