

PRODUCT INFORMATION PACKET



Model No: OTR1004

Catalog No: OTR1004

OEM Replacement Motor, 1/8 HP, 1 Ph, 60 Hz, 200-230 V, 1650 RPM, 1 Speed, 48 Frame, TEAO



Regal and Century are trademarks of Regal Rexnord Corporation or one of its affiliated companies.

©2023 Regal Rexnord Corporation, All Rights Reserved. MC017097E





Nameplate Specifications

Output HP	1/8 Hp	Output KW	0.10 kW
Frequency	60 Hz	Voltage	200-230 V
Current	0.7-0.9 A	Speed	1650 rpm
Service Factor	1	Phase	1
Duty	Air Over	Insulation Class	B
Frame	48Y	Enclosure	Totally Enclosed Air Over
Thermal Protection	Automatic	Ambient Temperature	40 °C
UL	Recognized	CSA	Y
CE	N	Number of Speeds	1

Technical Specifications

Electrical Type	Permanent Split Capacitor	Starting Method	Across The Line
Poles	6	Rotation	Counterclockwise Lead End
Mounting	Extended Studs	Motor Orientation	Vertical Shaft Down
Drive End Bearing	Ball	Opp Drive End Bearing	Ball
Frame Material	Rolled Steel	Shaft Type	Flat
Overall Length	5.61 in	Frame Length	3.00 in
Shaft Diameter	0.500 in	Shaft Extension	1.5 in
Connection Drawing	614131-030	Outline Drawing	11811-012

This is an uncontrolled document once printed or downloaded and is subject to change without notice. Date Created:03/09/2023

GENERAL INFORMATION:

SHAFT RUNOUT: .001 T.I.R. PER INCH LENGTH OF EXTENSION.

END PLAY: .010 TO .063

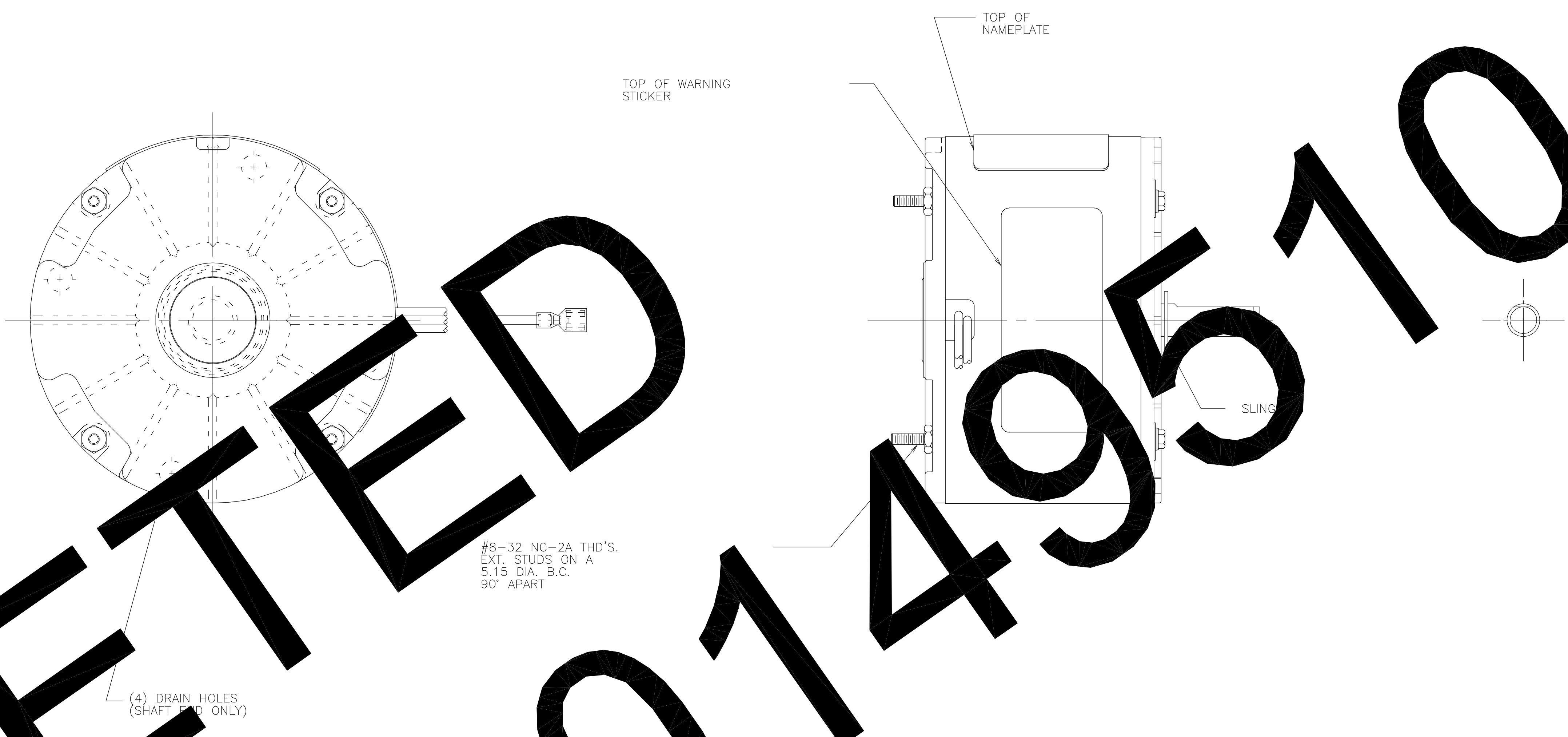
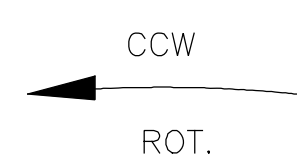
BEARINGS: SLEEVE

MOUNTING POSITION: VERTICAL SHAFT DOWN

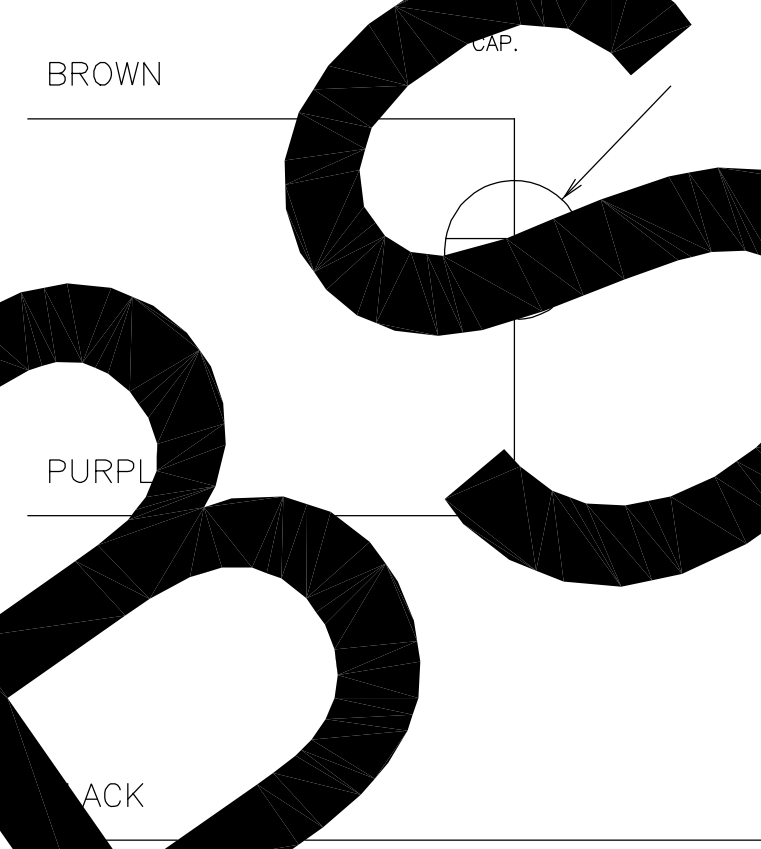
ELECTRICAL DATA:

OVERLOAD PROTECTOR: AUTOMATIC RESET (T.I. 7AM 36)

LEADS: NO. 18 GA., .06 THK., PVC 105°C INSUL.



MODEL: F48V54A01
CUST. P/N: OTR1004
HP: 1/8
ROT: CCWLE
RPM: 1650
TYPE: UF
FRAME: 48Y
VOLTS: 200-230
PH: 1
AMPS: 0.7-0.9
HZ: 60
INS: B
AMB: °C 40
DUTY: ALTERNATE
CAP.: 4 μF 370 V
ENCL: ENCLOSED
UL LOGO
CSA LOGO
THERMALLY PROTECTED

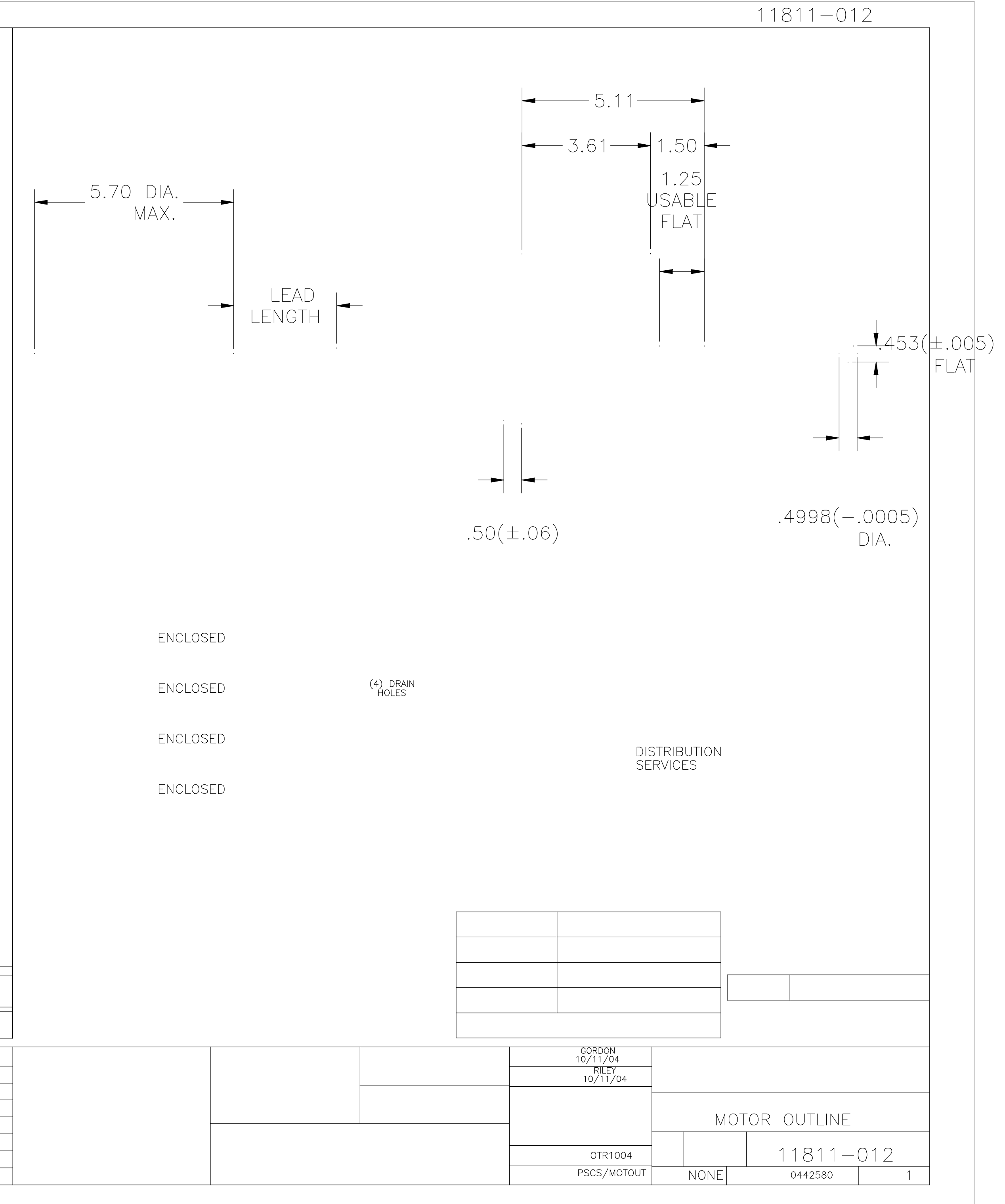


TORQUE @1650 RPM (25°C)

C32385 8.04 OZ. FT. 04425805 112 LR43341 4211-0

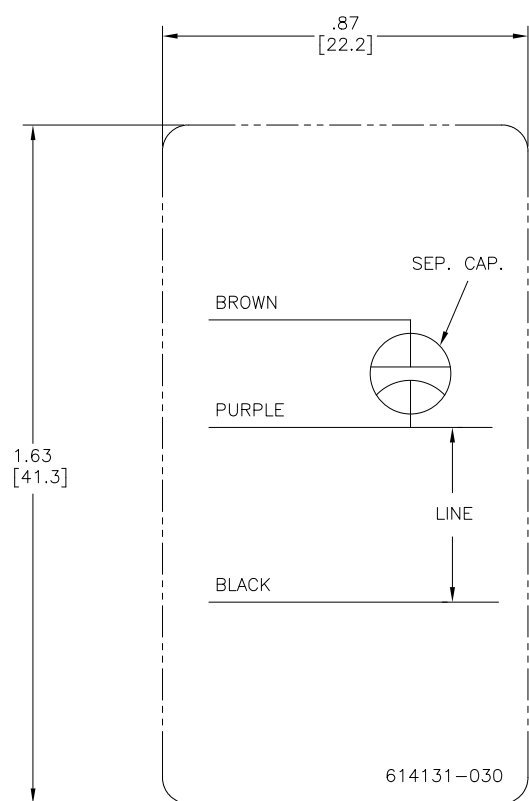
OBSOLETE PER PERECCO-0149510

BROWN	24/26	25 PRE-INSUL FEMALE SPADE
PURPLE	24/26	25 PRE-INSUL FEMALE SPADE
BLACK	24/26	25 PRE-INSUL FEMALE SPADE
COLOR	LENGTH	TERMINAL OR STRIP LENGTH
LEAD DATA		



H		A	-	-	-	-
J		B				
K		C				
L		D				
M		E				
N		F				
P		G				

10/11/04	
10/11/04	
MOTOR OUTLINE	
OTR1004	11811-012
PSCS/MOTOUT	NONE
0442580	1



NOTES:

1. FOR USE WITH 614129 OR 2513020-001 NAMEPLATE BLANKS;
2. ----- INDICATES DIMENSION LIMITS

DRAWING REVISION C		REVISION BY J. RUPERT	DATE 03-03-2023	TOLERANCES UNLESS OTHERWISE SPECIFIED		DRAWN BY: YL						
ECO NMR-0220758		APPROVED BY J. RUPERT	DATE 03-03-2023	DEC.	INCH	mm	ANGLE			DATE: 04-08-2011		
ECO DESCRIPTION REVISED FOR UP ISSUE				.X	±0.1	[±2.5]	±0.5°	APPROVED BY: CZ	DESCRIPTION CONN DIAGRAM-NAMEPLATE			
<small> COPYRIGHT REGAL BELOIT AMERICA, INC. ALL RIGHTS RESERVED. PROPRIETARY AND CONFIDENTIAL INFORMATION - THIS DOCUMENT IS THE PROPERTY OF REGAL BELOIT AMERICA, INC. (OWNER) AND COMPANY OWNER'S PROPRIETARY INFORMATION. ANY REPRODUCTION OR OTHER FIRM RECEIVING IT IS DENIED. BY RECEIVING IT, TO AGREE THAT IT, AND/OR ANY PART OF IT, SHALL NOT BE DISCLOSED TO ANY PERSON, CORPORATION OR OTHER ENTITY, DUPLICATED, AND/OR USED, EXCEPT AS EXPRESSLY APPROVED IN WRITING IN ADVANCE BY OWNER. THIS DOCUMENT SHALL BE RETURNED TO OWNER UPON REQUEST. IT MAY BE SUBJECT TO CERTAIN RESTRICTIONS UNDER APPLICABLE EXPORT CONTROL LAWS AND REGULATIONS. </small>				.XX	±0.02	[±0.51]		DATE: 07-08-2011	MATERIAL	PROCESS/FINISH		
				.XXX	±0.005	[±0.127]		REMOVE BURRS & BREAK SHARP EDGES .003/.015 [0.076/.381] X 45° CORNER FILLETS R.02 [.51]	REFERENCE			
				.XXXX	±0.0005	[±0.0127]		MACHINED SURFACES	THIRD ANGLE PROJECTION	SIZE	DWG NO	SHEET
								INCH	mm	C	614131-030	1