

# PRODUCT INFORMATION PACKET



Model No: M128L

Catalog No: M128L

2.0-.50 HP 2 speed General Purpose Motor, 3 phase, 1800/900 RPM, 230 V, 56FR Frame, ODP  
General Purpose Motors



Regal and Century are trademarks of Regal Rexnord Corporation or one of its affiliated companies.  
©2021 Regal Rexnord Corporation, All Rights Reserved. MC017097E





**Nameplate Specifications**

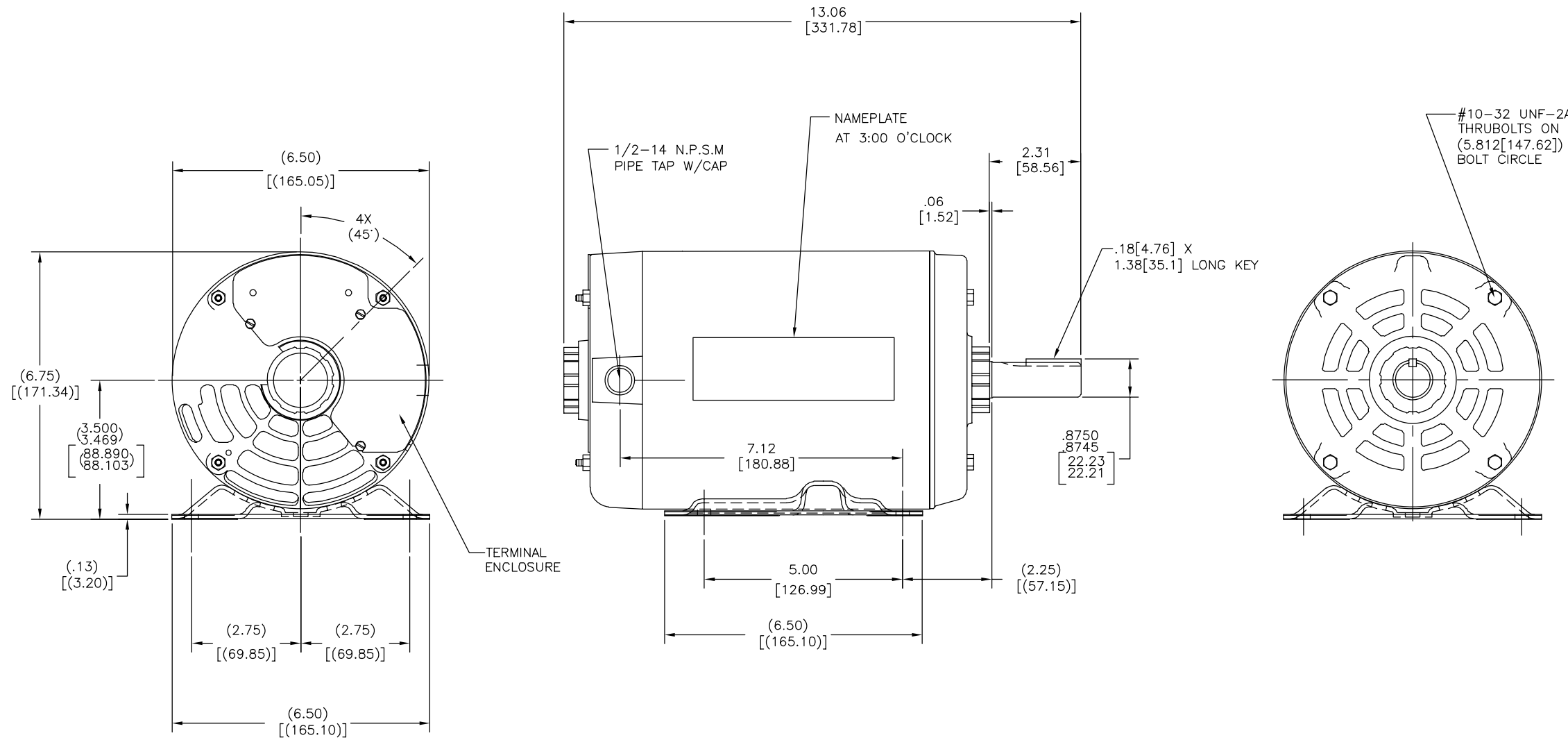
Output HP	<b>2.0-.50 Hp</b>	Output KW	<b>1.5 kW</b>
Frequency	<b>60 Hz</b>	Voltage	<b>230 V</b>
Current	<b>6.6/2.4 A</b>	Speed	<b>1745/850 rpm</b>
Service Factor	<b>1.15</b>	Phase	<b>3</b>
Duty	<b>Continuous</b>	Insulation Class	<b>F</b>
Frame	<b>56</b>	Enclosure	<b>Drip Proof</b>
Thermal Protection	<b>No</b>	Ambient Temperature	<b>40 °C</b>
UL	<b>Recognized</b>	CSA	<b>Y</b>
CE	<b>N</b>	Number of Speeds	<b>2-1-VT</b>

**Technical Specifications**

Electrical Type	<b>Polyphase, Induction Type, Multi-Speed</b>	Starting Method	<b>Across The Line</b>
Poles	<b>4/ 8</b>	Rotation	<b>Reversible Counterclockwise</b>
Mounting	<b>Rigid Base</b>	Drive End Bearing	<b>Ball</b>
Opp Drive End Bearing	<b>Ball</b>	Frame Material	<b>Rolled Steel</b>
Shaft Type	<b>Keyed</b>	Overall Length	<b>13.06 in</b>
Frame Length	<b>7.25 in</b>	Shaft Diameter	<b>0.875 in</b>
Shaft Extension	<b>2.31 in</b>		
Outline Drawing	<b>M128L-S01</b>	Connection Drawing	<b>17050625.PCX</b>

This is an uncontrolled document once printed or downloaded and is subject to change without notice. Date Created:10/07/2021

ALL DIMENSION SHOWN IN PARENTHESIS ARE REFERENCE DIMENSIONS. ALL OTHER DIMENSIONS ARE TOLERANCED PER THE FOLLOWING CHART UNLESS OTHERWISE SPECIFIED.



NOTE:  
1. FOR APPROXIMATE SHIPPING WEIGHT OF MOTOR ADD %15 TO THE NET WEIGHT

DRAWING REVISION D	REVISION BY F.NAVARRO	DATE 10-20-2014	TOLERANCES UNLESS OTHERWISE SPECIFIED DEC. INCH mm ANGLE .X ±0.1 [±2.5] ±0.5° .XX ±0.02 [±0.51] .XXX ±0.005 [±0.127] .XXXX ±0.0005 [±0.0127]	DRAWN BY: TW	Regal Beloit America, Inc.	
ECO 0061389	APPROVED BY G.GALVIREZ	DATE 10-20-2014	REMOVE BURRS & BREAK SHARP EDGES .003/.015 [0.076/.381] CORNER FILLETS .02 [1.51] MACHINED SURFACES $\frac{125}{\text{INCH}}$ $\frac{3.2}{\text{mm}}$	DATE: 05-12-2010		
ECO DESCRIPTION SEE ECO	COPYRIGHT REGAL BELOIT AMERICA, INC. ALL RIGHTS RESERVED. PROPRIETARY AND CONFIDENTIAL INFORMATION - THIS DOCUMENT IS THE PROPERTY OF REGAL BELOIT AMERICA, INC. (OWNER) AND CONTAINS OWNER'S PROPRIETARY INFORMATION. ANY PERSON, CORPORATION OR OTHER FIRM RECEIVING IT IS DEEMED, BY RECEIVING IT, TO AGREE THAT IT, AND/OR ANY PART OF IT, SHALL NOT BE DISCLOSED TO ANY PERSON, CORPORATION OR OTHER ENTITY, DUPLICATED, AND/OR USED, EXCEPT AS EXPRESSLY APPROVED IN WRITING IN ADVANCE BY OWNER. THIS DOCUMENT SHALL BE RETURNED TO OWNER UPON REQUEST. IT MAY BE SUBJECT TO CERTAIN RESTRICTIONS UNDER APPLICABLE EXPORT CONTROL LAWS AND REGULATIONS.			APPROVED BY: HZ	DESCRIPTION MODEL-IHP OUTLINE	
				DATE: 05-12-2010	MATERIAL -	PROCESS/FINISH -
				REFERENCE -	SIZE DWG NO C M128L	SHEET 1