

PRODUCT INFORMATION PACKET



Model No: H853V2

Catalog No: H853V2

1.5 HP Fan and Blower HVAC/R Motor, 3 phase, 1800 RPM, 460/200-230 V, 56H Frame, ODP
Fan and Blower Motors



Regal and Century are trademarks of Regal Rexnord Corporation or one of its affiliated companies.
©2021 Regal Rexnord Corporation, All Rights Reserved. MC017097E





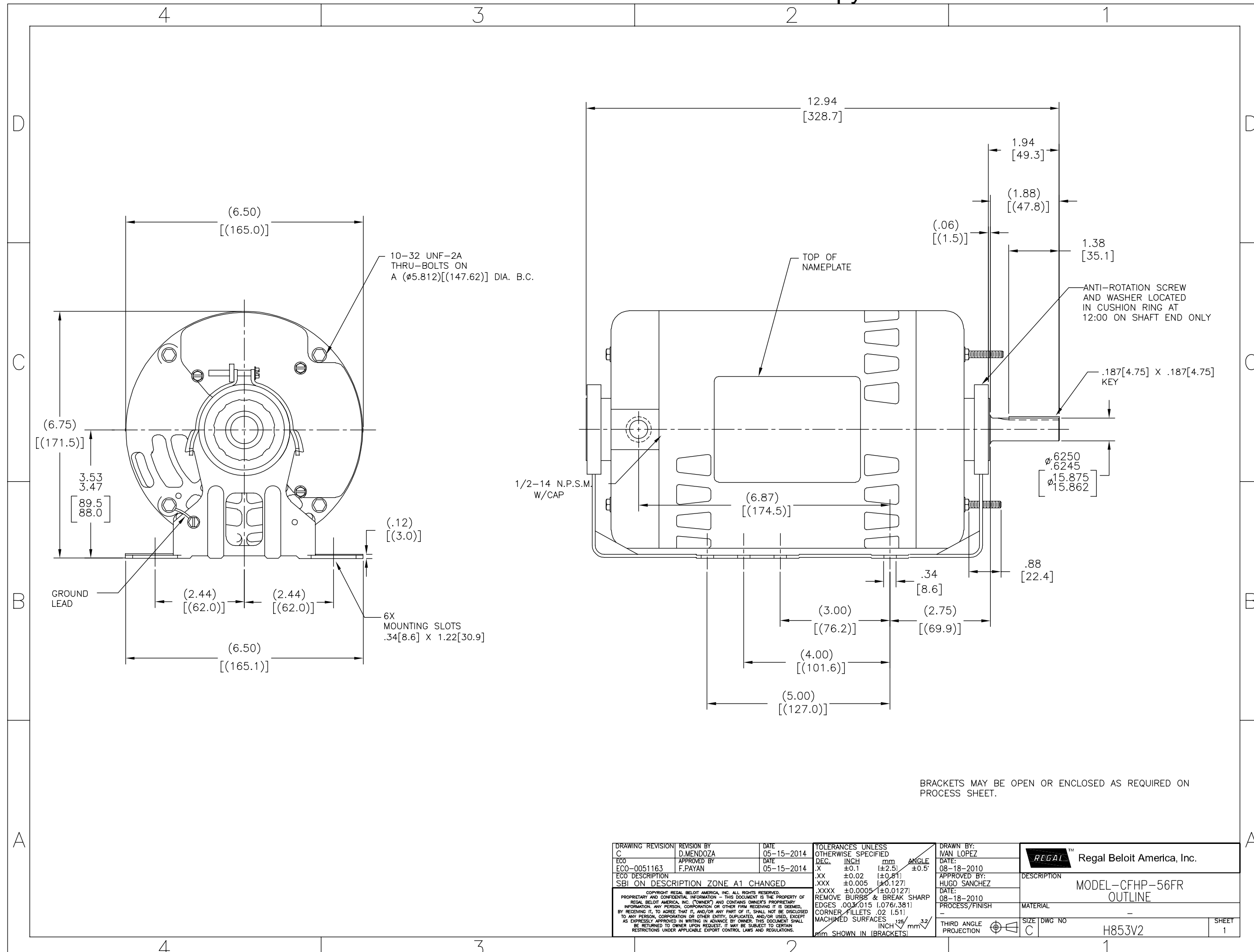
Nameplate Specifications

| | | | |
|--------------------|---------------------|---------------------|---------------|
| Output HP | 1.5 Hp | Output KW | 1.1 kW |
| Frequency | 60 Hz | Voltage | 460/200-230 V |
| Current | 2.8/5.0-5.6 A | Speed | 1725 rpm |
| Service Factor | 1.15 | Phase | 3 |
| Duty | Continuous | Insulation Class | B |
| Frame | 56H | Enclosure | Drip Proof |
| Thermal Protection | Thermally Protected | Ambient Temperature | 40 °C |
| UL | Recognized | CSA | Y |
| CE | N | Number of Speeds | 1 |

Technical Specifications

| | | | |
|-----------------------|---|--------------------|-----------------------------|
| Electrical Type | Polyphase, Induction Type, Single Or Dual Voltage | Starting Method | Across The Line |
| Poles | 4 | Rotation | Reversible Counterclockwise |
| Mounting | Cushion Base | Drive End Bearing | Ball |
| Opp Drive End Bearing | Ball | Frame Material | Rolled Steel |
| Shaft Type | Keyed | Overall Length | 12.94 in |
| Frame Length | 7.00 in | Shaft Diameter | 0.625 in |
| Shaft Extension | 1.94 in | | |
| Outline Drawing | H853V2-S01 | Connection Drawing | 17564810.PCX |

This is an uncontrolled document once printed or downloaded and is subject to change without notice. Date Created:10/07/2021



| | | | | | |
|---|--------------------------|--------------------|---|------------------------------|---|
| DRAWING REVISION C | REVISION BY D.MENDOZA | DATE 05-15-2014 | TOLERANCES UNLESS OTHERWISE SPECIFIED DEC. INCH mm ANGLE | DRAWN BY: IVAN LOPEZ | Regal Beloit America, Inc. |
| ECO ECO-0051163 | APPROVED BY F.PAYAN | DATE 05-15-2014 | .X ±0.1 (±2.5) ±0.5° .XX ±0.02 (±0.51) .XXX ±0.005 (±0.127) .XXXX ±0.0005 (±0.0127) | DATE: 08-18-2010 | |
| ECO DESCRIPTION SBI ON DESCRIPTION ZONE A1 CHANGED | | | REMOVE BURRS & BREAK SHARP EDGES .003/.015 (0.076/.381) CORNER FILLETS .02 (1.51) MACHINED SURFACES $\frac{125}{\text{INCH}}$ $\frac{3.2}{\text{mm}}$ | APPROVED BY: HUGO SANCHEZ | DESCRIPTION MODEL-CFHP-56FR OUTLINE |
| <small>COPYRIGHT REGAL BELOIT AMERICA, INC. ALL RIGHTS RESERVED. PROPRIETARY AND CONFIDENTIAL INFORMATION - THIS DOCUMENT IS THE PROPERTY OF REGAL BELOIT AMERICA, INC. (OWNER) AND CONTAINS OWNER'S PROPRIETARY INFORMATION. ANY PERSON, CORPORATION OR OTHER FIRM RECEIVING IT IS DEEMED, BY RECEIVING IT, TO AGREE THAT IT, AND/OR ANY PART OF IT, SHALL NOT BE DISCLOSED TO ANY PERSON, CORPORATION OR OTHER ENTITY, DUPLICATED, AND/OR USED, EXCEPT AS EXPRESSLY APPROVED IN WRITING IN ADVANCE BY OWNER. THIS DOCUMENT SHALL BE RETURNED TO OWNER UPON REQUEST. IT MAY BE SUBJECT TO CERTAIN RESTRICTIONS UNDER APPLICABLE EXPORT CONTROL LAWS AND REGULATIONS.</small> | | | THIRD ANGLE PROJECTION | DATE: 08-18-2010 | MATERIAL |
| | | | | PROCESS/FINISH | SIZE DWG NO C H853V2 |
| | | | | | SHEET 1 |

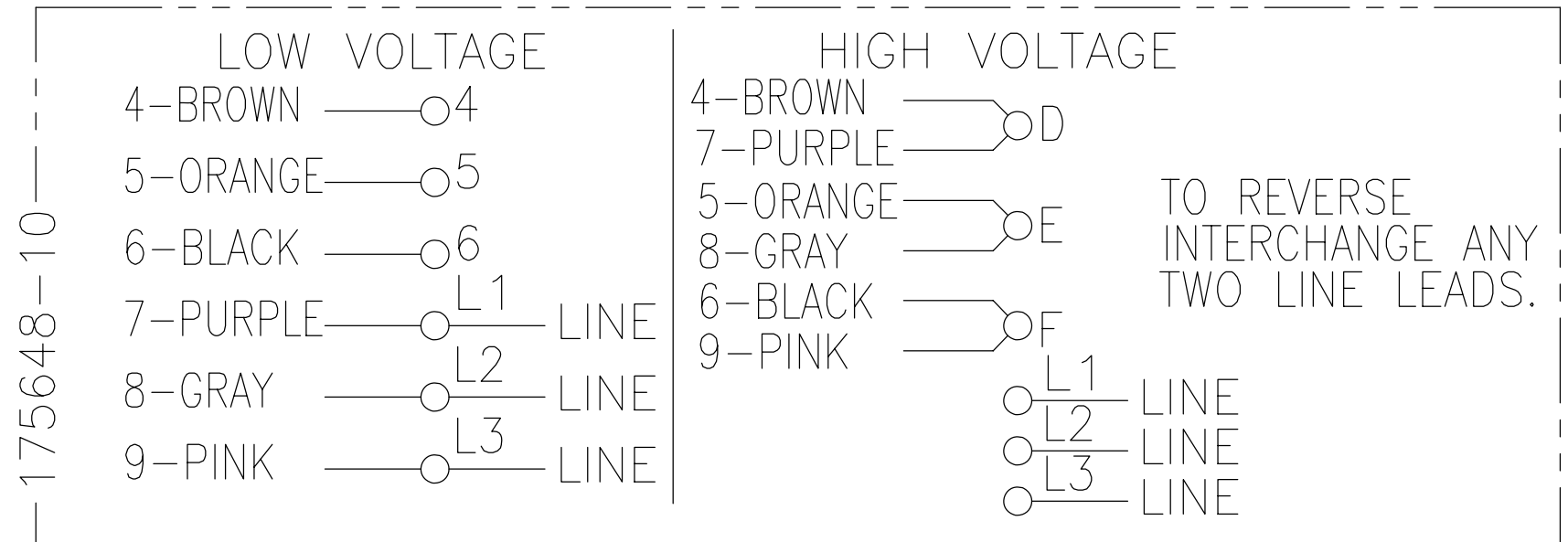
4

3

2

1

| | | | | | |
|-----|-------------|--------|------------|---------------|------------|
| REV | ECO | REV BY | DATE | APPD | DATE |
| C | ECO-0027036 | J. COX | 11-19-2012 | C. McREYNOLDS | 11-19-2012 |



- NOTES:
1. DOTTED BOX REPRESENTS TOTAL PRINTED AREA ALLOWED FOR CONNECTION DIAGRAM TO FIT IN (2.13 X .75) [(541.0 X 19.1)]. SEE NAMEPLATE DRAWING 170500 OR 170501 FOR LOCATION.
 2. CHARACTERS ARE TO BE A MINIMUM OF .03[.8] TO .06[1.5] MAXIMUM IN HEIGHT.
 3. DETAIL ARE NOT TO BE COPIED FROM DRAWING, BUT ARE TO BE REPRODUCED FROM ORIGINAL ARTWORK FURNISHED.

A

A

| | | | | | | | |
|--|---|--|----------|------------|---------------------------------|-------------|------------------------|
| GEOMETRIC CHARACTERISTICS & SYMBOLS ▽ FLATNESS — STRAIGHTNESS ∠ ANGULARITY ⊥ PERPENDICULARITY (SQUARENESS) // PARALLELISM ○ ROUNDNESS (CIRCULARITY) ⌀ CYLINDRICITY △ PROFILE OF ANY SURFACE ∩ PROFILE OF ANY LINE ↗ RUNOUT ⊕ TRUE POSITION ⊙ CONCENTRICITY ≡ SYMMETRY ASME Y14.5M 1994 | UNLESS OTHERWISE SPECIFIED DIM. TOLERANCES ARE AS FOLLOWS: INCH X XX XXX XXXX ±.1 ±.02 ±.005 ±.0005 mm ±0.5 ±0.13 ±0.013 ANG. ±.50 DEG REMOVE BURRS & BREAK SHARP EDGES: INCH .003-.015 mm 0.1-0.4 CORNER FILLETS TO: INCH .020 mm 0.5 MACHINE SURFACES: INCH 125 mm 3.2 METRIC DIMS. SHOWN IN [BRACKETS] | DR BY: | PLM | 02-17-1989 | REGAL-BELOIT CORPORATION | | |
| | | APPD: | MH | 02-21-1989 | | DESCRIPTION | CONN DIAGRAM-NAMEPLATE |
| | | THIRD ANGLE PROJECTION | | EDS DATE | 11-11-2011 | SIZE | B |
| | | CONFIDENTIAL: THIS DRAWING AND ITS INFORMATION ARE THE EXCLUSIVE AND CONFIDENTIAL PROPERTY OF REGAL-BELOIT CORPORATION AND ARE NOT TO BE DISCLOSED, DUPLICATED, DISTRIBUTED OR OTHERWISE USED WITHOUT THE WRITTEN CONSENT OF REGAL-BELOIT CORPORATION. -ALL RIGHTS RESERVED. | | | | FORMAT REV | H |
| | | DWG NO | 17564810 | | SCALE | NONE | |
| | | | | | SHEET | 1 | |

4

3

2

1

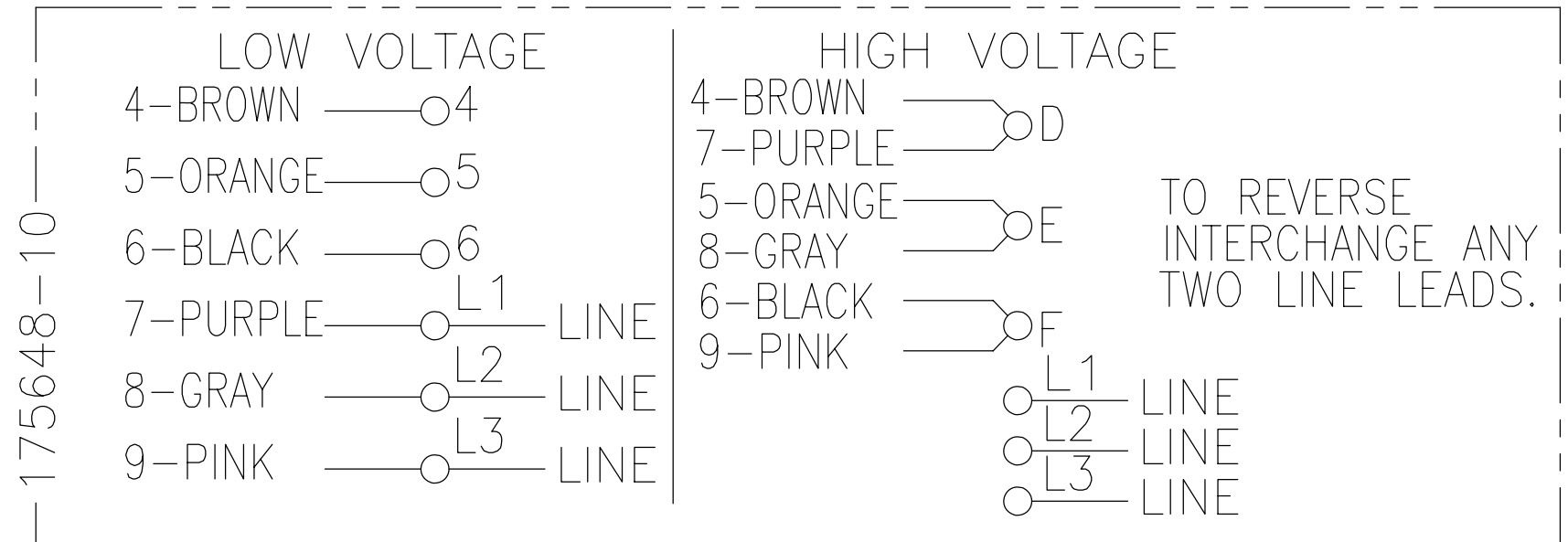
4

3

2

1

| | | | | | |
|-----------|-------------|---------------|------------|---------------|------------|
| REVISION: | ECO | REVISADO POR: | FECHA: | APROBADO POR: | FECHA: |
| C | ECO-0027036 | J. COX | 11-19-2012 | C. McREYNOLDS | 11-19-2012 |



NOTAS:

1. LA CAJA PUNTEADA REPRESENTA EL AREA TOTAL DE IMPRESION PERMITIDA PARA EL DIAGRAMA DE CONEXION AJUSTADO EN (2.13 X .75) [(541.0 X 19.1)]. VER LA PLACA DE DATOS EN EL DIBUJO 170500 O 170501 PARA UBICACION.
2. CARACTERES DEBEN ESTAR A UNA ALTURA MINIMA DE .03[.8] A UNA MAXIMA DE .06[1.5].
3. LOS DETALLES NO SERAN COPIADOS AL DIBUJO, PERO DEBEN SER PRODUCIDOS DESDE EL BOCETO ORIGINAL PROPORCIONADO.

CARACTERISTICAS DE GEOMETRIA Y SIMBOLOS

- ∇ PLANICIDAD
- RECTITUD
- ∠ ANGULARIDAD
- ⊥ PERPENDICULARIDAD (A ESCUADRA)
- // PARALELISMO
- REDONDEZ (CIRCULARIDAD)
- ⊘ CILINDRICIDAD
- △ PERFIL DE CUALQUIER SUPERFICIE
- ∩ PERFIL DE CUALQUIER LINEA
- ↗ VARIACION
- ⊕ POSICION REAL
- ◎ CONCENTRICIDAD
- ≡ SIMETRIA

ASME Y14.5M 1994

A MENOS QUE SE ESPECIFIQUE DE OTRA MANERA, LAS TOLERANCIAS DE LAS DIMS; SON LAS SIGUIENTES:

PULG $\pm .1$ $\pm .02$ $\pm .005$ $\pm .0005$
 mm ± 0.5 ± 0.13 ± 0.013

ANG. $\pm .50$ GRADOS

ELIMINAR REBABAS Y ORILLAS FILOSAS DEL BORDE.

PULG .003-.015 mm 0.1-0.4

FILETEAR ESQUINA: PULG .020 mm 0.5

MAQUINAR SUPERFICIES

PULG $\sqrt{125}$ mm $\sqrt{3.2}$

DIMS METRICAS MOSTRADAS [PARENTESIS]

| | | |
|--|-----|--|
| DIBUJADO POR: | PLM | 02-17-1989 |
| APROBADO POR: | MH | 02-21-1989 |
| TERCER ANGULO DE PROYECCION | | FECHA EDS: 11-11-2011 REV. FORMATO: H |
| CONFIDENCIAL: ESTE DIBUJO Y SU INFORMACION SON PROPIEDAD DE USO EXCLUSIVO Y CONFIDENCIAL DE REGAL-BELOIT CORPORATION Y NO DEBERAN SER REVELADOS, DUPLICADOS, DISTRIBUIDOS O USARSE DE OTRA MANERA SIN EL CONSENTIMIENTO ESCRITO DE REGAL-BELOIT CORPORATION. -TODOS LOS DERECHOS RESERVADOS. | | |

| | |
|--|----------------------------|
| REGAL-BELOIT CORPORATION | |
| DESCRIPCION: CONN DIAGRAM-NAMEPLATE | |
| TAMAÑO: B | NUMERO DE DIBUJO: 17564810 |
| ESCALA: NONE | HOJA: 1 |

4

3

2

1