

PRODUCT INFORMATION PACKET



Model No: H564

Catalog No: H564

Condenser Fan Motor, 1/2 HP, 3 Ph, 60 Hz, 460/200-230 V, 1200 RPM, L56Y Frame, OPEN



Regal and Century are trademarks of Regal Rexnord Corporation or one of its affiliated companies.

©2023 Regal Rexnord Corporation, All Rights Reserved. MC017097E





Nameplate Specifications

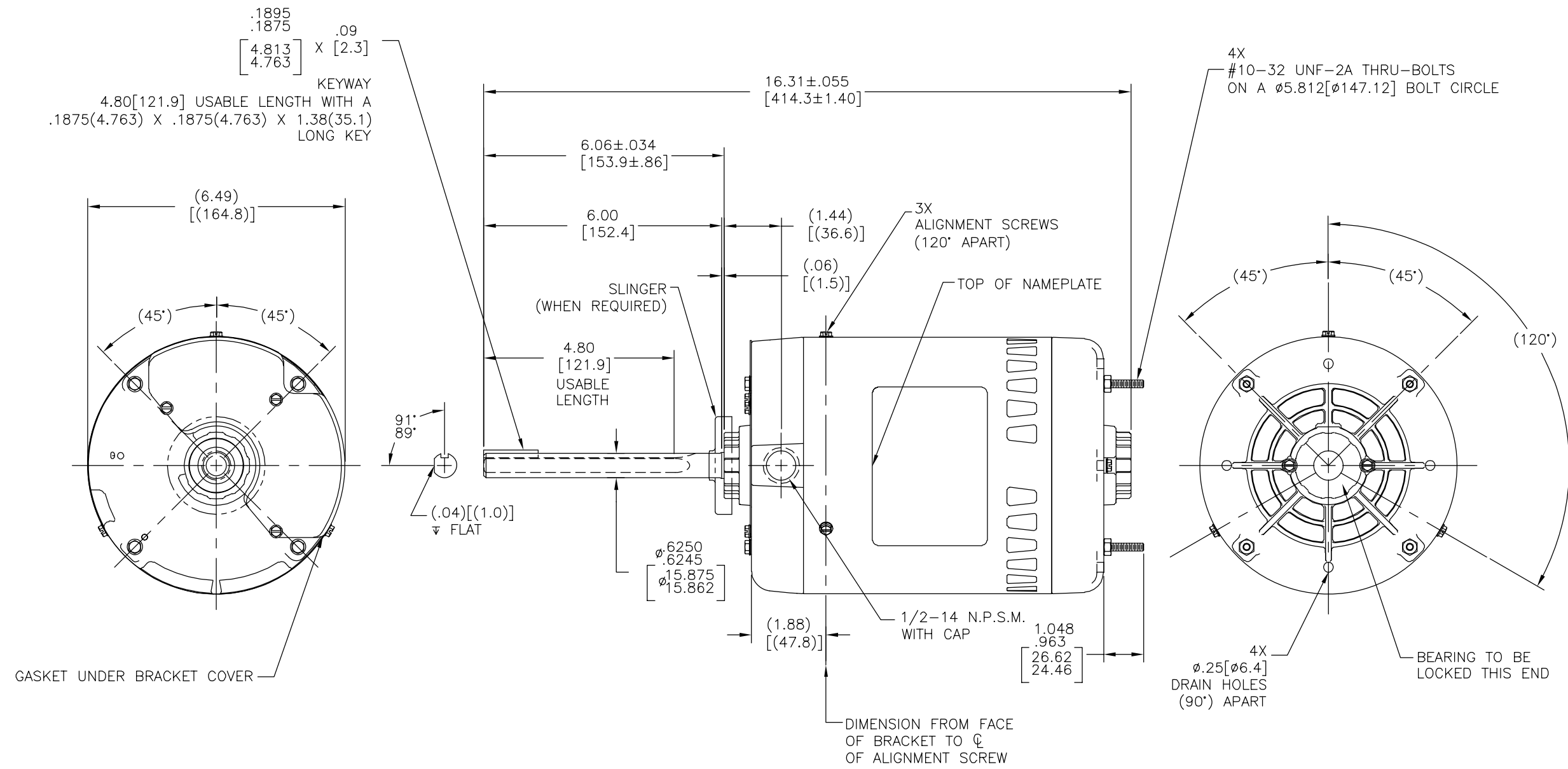
| | | | |
|--------------------|---------------------|---------------------|---------------|
| Output HP | 1/2 Hp | Output KW | 0.37 kW |
| Frequency | 60 Hz | Voltage | 460/200-230 V |
| Current | 1.3/2.8-2.6 A | Speed | 1140 rpm |
| Service Factor | 1 | Phase | 3 |
| Duty | Continuous Air Over | Insulation Class | B |
| Frame | L56Y | Enclosure | Open Enclosed |
| Thermal Protection | Thermally Protected | Ambient Temperature | 60 °C |
| UL | Recognized | CSA | Y |
| CE | N | Number of Speeds | 1 |

Technical Specifications

| | | | |
|-----------------------|---|-------------------|-----------------------------|
| Electrical Type | Polyphase, Induction Type, Single Or Dual Voltage | Starting Method | Across The Line |
| Poles | 6 | Rotation | Reversible Counterclockwise |
| Mounting | Round Belly Band | Drive End Bearing | Ball |
| Opp Drive End Bearing | Ball | Frame Material | Rolled Steel |
| Shaft Type | Keyed | Overall Length | 16.31 in |
| Frame Length | 6.25 in | Shaft Diameter | 0.625 in |
| Shaft Extension | 6.06 in | | |
| Connection Drawing | 17564810.PCX | Outline Drawing | H564-S01 |

This is an uncontrolled document once printed or downloaded and is subject to change without notice. Date Created:02/16/2023

| REV | ECO | REV BY | DATE | APPD | DATE |
|-----|---------|------------|------------|--------------|------------|
| A | 0034835 | J.AGUILERA | 07-16-2013 | D.BALDERRAMA | 07-16-2013 |



● = CRITICAL DIMENSION

GEOMETRIC CHARACTERISTICS & SYMBOLS

- ▭ FLATNESS
- STRAIGHTNESS
- ∠ ANGULARITY
- ⊥ PERPENDICULARITY (SQUARENESS)
- ∥ PARALLELISM
- ROUNDNESS (CIRCULARITY)
- ⊘ CYLINDRICITY
- △ PROFILE OF ANY SURFACE
- ∩ PROFILE OF ANY LINE
- ↗ RUNOUT
- ⊕ TRUE POSITION
- ◎ CONCENTRICITY
- ≡ SYMMETRY

ASME Y14.5M 1994

UNLESS OTHERWISE SPECIFIED
DIM. TOLERANCES ARE AS FOLLOWS:

INCH X XX XXX XXXX
mm ±0.5 ±0.13 ±0.013

ANG. ±.50 DEG
REMOVE BURRS & BREAK SHARP EDGES:
INCH .003-.015 mm 0.1-0.4

CORNER FILLETS TO:
INCH .020 mm 0.5

MACHINE SURFACES:
INCH 125 mm 3.2

METRIC DIMS. SHOWN IN [BRACKETS]

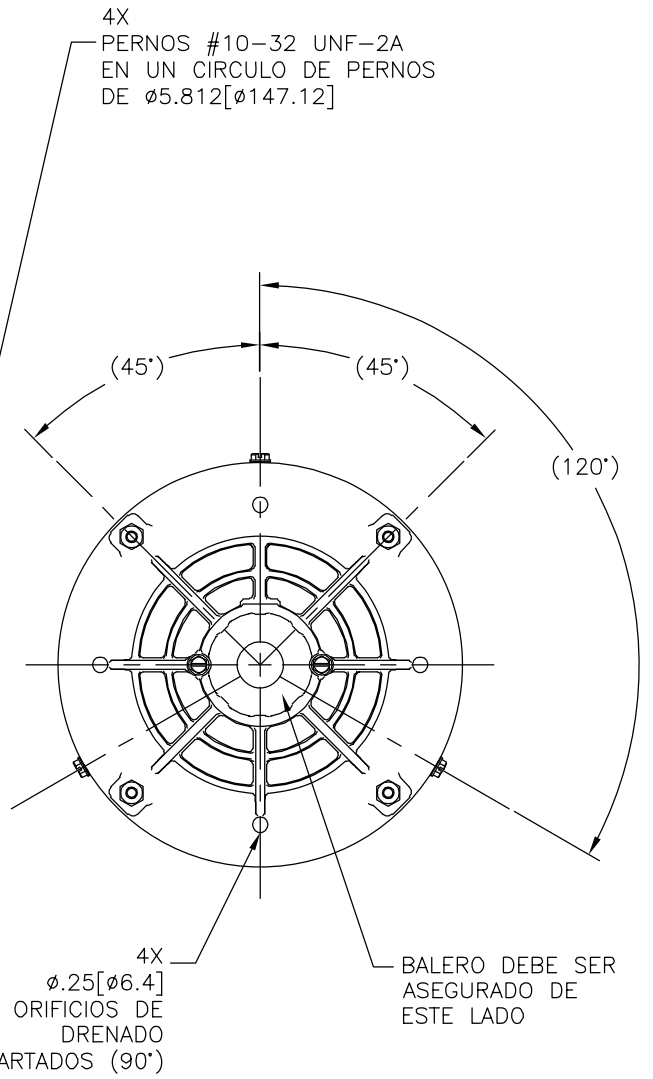
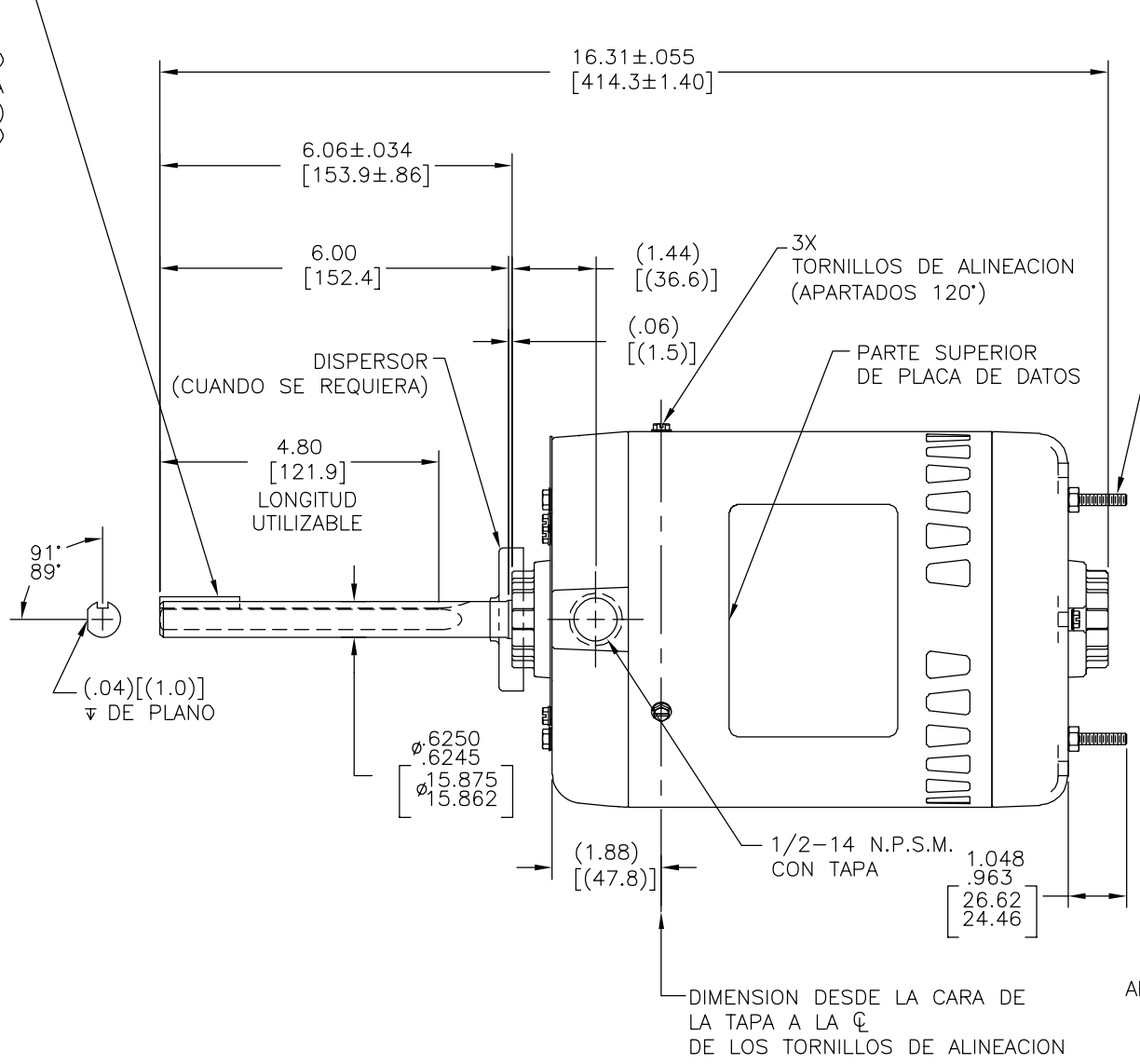
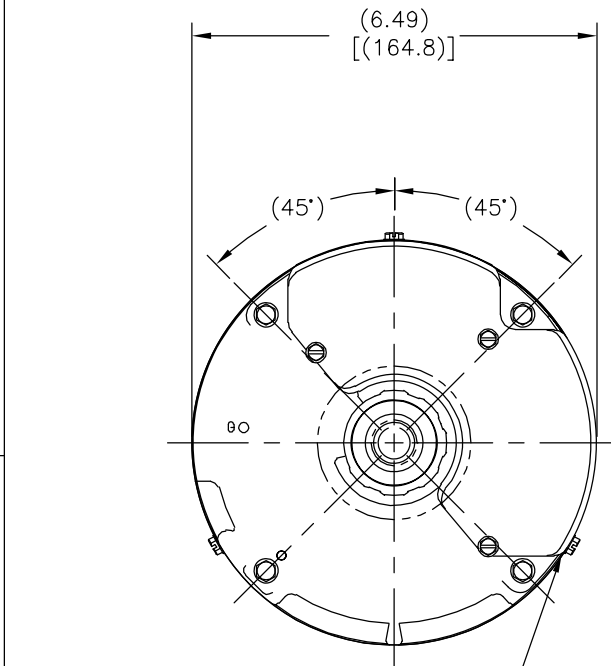
| | | |
|--|--------------|-------------------------------------|
| DR BY: | J.AGUILERA | 07-16-2013 |
| APPD: | D.BALDERRAMA | 07-16-2013 |
| THIRD ANGLE PROJECTION | | EDS DATE 11-11-2011 FORMAT REV H |
| CONFIDENTIAL: THIS DRAWING AND ITS INFORMATION ARE THE EXCLUSIVE AND CONFIDENTIAL PROPERTY OF REGAL-BELOIT CORPORATION AND ARE NOT TO BE DISCLOSED, DUPLICATED, DISTRIBUTED OR OTHERWISE USED WITHOUT THE WRITTEN CONSENT OF REGAL-BELOIT CORPORATION. -ALL RIGHTS RESERVED. | | |

| | |
|---------------------------------------|--------|
| REGAL REGAL-BELOIT CORPORATION | |
| DESCRIPTION | |
| MODEL-CFHP-56FR OUTLINE | |
| SIZE | DWG NO |
| C | H564 |
| SCALE | SHEET |
| NONE | 1 |

| | | | | | |
|-----------|---------|---------------|------------|---------------|------------|
| REVISION: | ECO | REVISADO POR: | FECHA: | APROBADO POR: | FECHA: |
| A | 0034835 | J.AGUILERA | 07-16-2013 | D.BALDERRAMA | 07-16-2013 |

.1895
.1875
[4.813] X [2.3]
4.763

CUÑERO
CON UNA
CUÑA DE .1875(4.763) X .1875(4.763) X 1.38(35.1)
DE LARGO



● = DIMENSION CRITICA

| CARACTERISTICAS DE GEOMETRIA Y SIMBOLOS | |
|---|--------------------------------|
| ▭ | PLANICIDAD |
| - | RECTITUD |
| ∠ | ANGULARIDAD |
| ⊥ | PERPENDICULARIDAD (A ESCUADRA) |
| // | PARALELISMO |
| ○ | REDONDEZ (CIRCULARIDAD) |
| ⊘ | CILINDRICIDAD |
| △ | PERFIL DE CUALQUIER SUPERFICIE |
| ∧ | PERFIL DE CUALQUIER LINEA |
| ∠ | VARIACION |
| ⊕ | POSICION REAL |
| ⊙ | CONCENTRICIDAD |
| ≡ | SIMETRIA |

| | |
|---|-----------------------|
| A MENOS QUE SE ESPECIFIQUE DE OTRA MANERA, LAS TOLERANCIAS DE LAS DIMS; SON LAS SIGUIENTES: | |
| PULG | ±.1 ±.02 ±.005 ±.0005 |
| mm | ±0.5 ±0.13 ±0.013 |
| ANG. | ± 50 GRADOS |
| ELIMINAR REBABAS Y ORILLAS FILOSAS DEL BORDE. | |
| PULG | .003-.015 mm 0.1-0.4 |
| FILETEAR ESQUINA: | PULG .020 mm 0.5 |
| MAQUINAR SUPERFICIES | PULG 125 mm 3.2 |
| DIMS METRICAS MOSTRADAS [PARENTESIS] | |

| | | |
|---|--------------|-----------------------|
| DIBUJADO POR: | J.AGUILERA | 07-16-2013 |
| APROBADO POR: | D.BALDERRAMA | 07-16-2013 |
| TERCER ANGULO DE PROYECCION | ⊕ | FECHA EDS: 11-11-2011 |
| | | REV. FORMATO: H |
| CONFIDENCIAL: ESTE DIBUJO Y SU INFORMACION SON PROPIEDAD DE USO EXCLUSIVO Y CONFIDENCIAL DE REGAL-BELOIT CORPORATION. Y NO DEBERAN SER REVELADOS, DUPLICADOS, DISTRIBUIDOS O USARSE DE OTRA MANERA SIN EL CONSENTIMIENTO ESCRITO DE REGAL-BELOIT CORPORATION. -TODOS LOS DERECHOS RESERVADOS. | | |

| | |
|---------------------------------------|------------------------|
| REGAL REGAL-BELOIT CORPORATION | |
| DESCRIPCION: | |
| MODEL-CFHP-56FR OUTLINE | |
| TAMAÑO: C | NUMERO DE DIBUJO: H564 |
| ESCALA: NONE | HOJA: 1 |

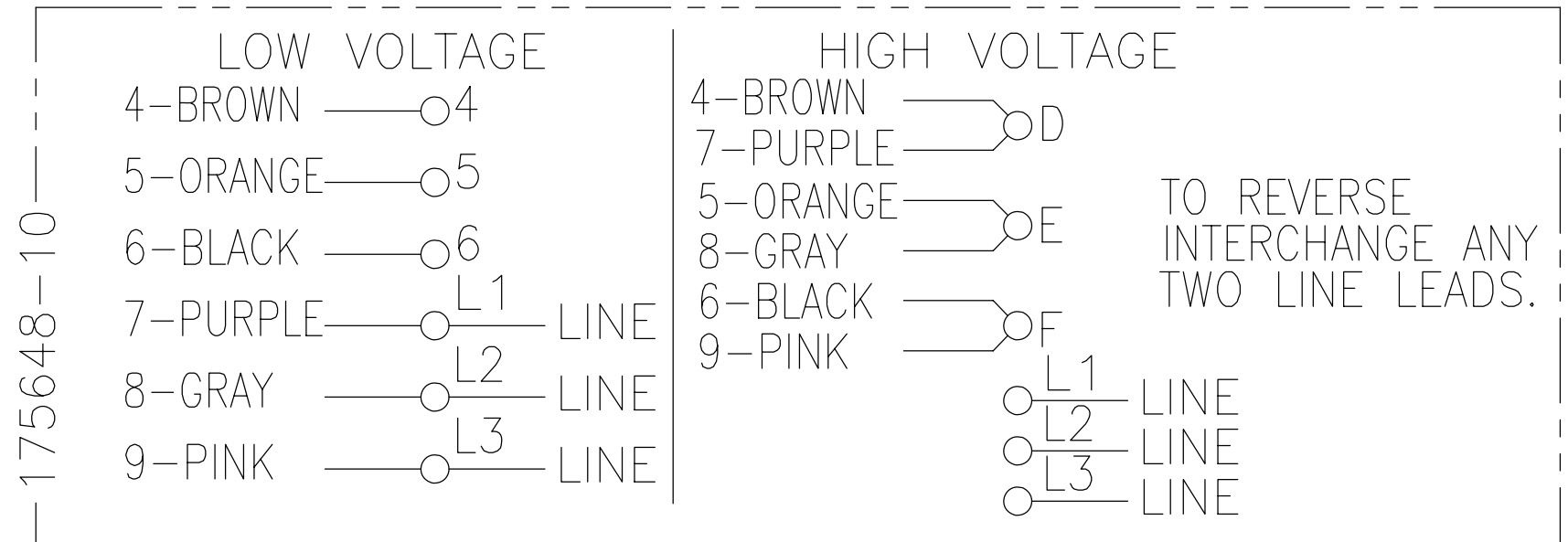
4

3

2

1

| | | | | | |
|-----|-------------|--------|------------|---------------|------------|
| REV | ECO | REV BY | DATE | APPD | DATE |
| C | ECO-0027036 | J. COX | 11-19-2012 | C. McREYNOLDS | 11-19-2012 |



NOTES:

1. DOTTED BOX REPRESENTS TOTAL PRINTED AREA ALLOWED FOR CONNECTION DIAGRAM TO FIT IN (2.13 X .75) [(541.0 X 19.1)]. SEE NAMEPLATE DRAWING 170500 OR 170501 FOR LOCATION.
2. CHARACTERS ARE TO BE A MINIMUM OF .03[.8] TO .06[1.5] MAXIMUM IN HEIGHT.
3. DETAIL ARE NOT TO BE COPIED FROM DRAWING, BUT ARE TO BE REPRODUCED FROM ORIGINAL ARTWORK FURNISHED.

GEOMETRIC CHARACTERISTICS & SYMBOLS

- ▭ FLATNESS
- STRAIGHTNESS
- ∠ ANGULARITY
- ⊥ PERPENDICULARITY (SQUARENESS)
- // PARALLELISM
- ROUNDNESS (CIRCULARITY)
- ⊘ CYLINDRICITY
- △ PROFILE OF ANY SURFACE
- ∩ PROFILE OF ANY LINE
- ↗ RUNOUT
- ⊕ TRUE POSITION
- ◎ CONCENTRICITY
- ≡ SYMMETRY

ASME Y14.5M 1994

UNLESS OTHERWISE SPECIFIED
DIM. TOLERANCES ARE AS FOLLOWS:

| | | | | |
|------|------|-------|--------|--------|
| | X | XX | XXX | XXXX |
| INCH | ±.1 | ±.02 | ±.005 | ±.0005 |
| mm | ±0.5 | ±0.13 | ±0.013 | |

ANG. ±.50 DEG
REMOVE BURRS & BREAK SHARP EDGES:
INCH .003-.015 mm 0.1-0.4
CORNER FILLETS TO:
INCH .020 mm 0.5
MACHINE SURFACES:
INCH 125 mm 3.2

METRIC DIMS. SHOWN IN [BRACKETS]

| | | |
|--|-----|-------------------------------------|
| DR BY: | PLM | 02-17-1989 |
| APPD: | MH | 02-21-1989 |
| THIRD ANGLE PROJECTION | | EDS DATE 11-11-2011 FORMAT REV H |
| CONFIDENTIAL: THIS DRAWING AND ITS INFORMATION ARE THE EXCLUSIVE AND CONFIDENTIAL PROPERTY OF REGAL-BELOIT CORPORATION AND ARE NOT TO BE DISCLOSED, DUPLICATED, DISTRIBUTED OR OTHERWISE USED WITHOUT THE WRITTEN CONSENT OF REGAL-BELOIT CORPORATION. -ALL RIGHTS RESERVED. | | |

| | | | |
|---------------------------------------|------|---------------------------------|----------|
| | | REGAL-BELOIT CORPORATION | |
| DESCRIPTION CONN DIAGRAM-NAMEPLATE | | | |
| SIZE | B | DWG NO | 17564810 |
| SCALE | NONE | SHEET 1 | |

4

3

2

1

4

3

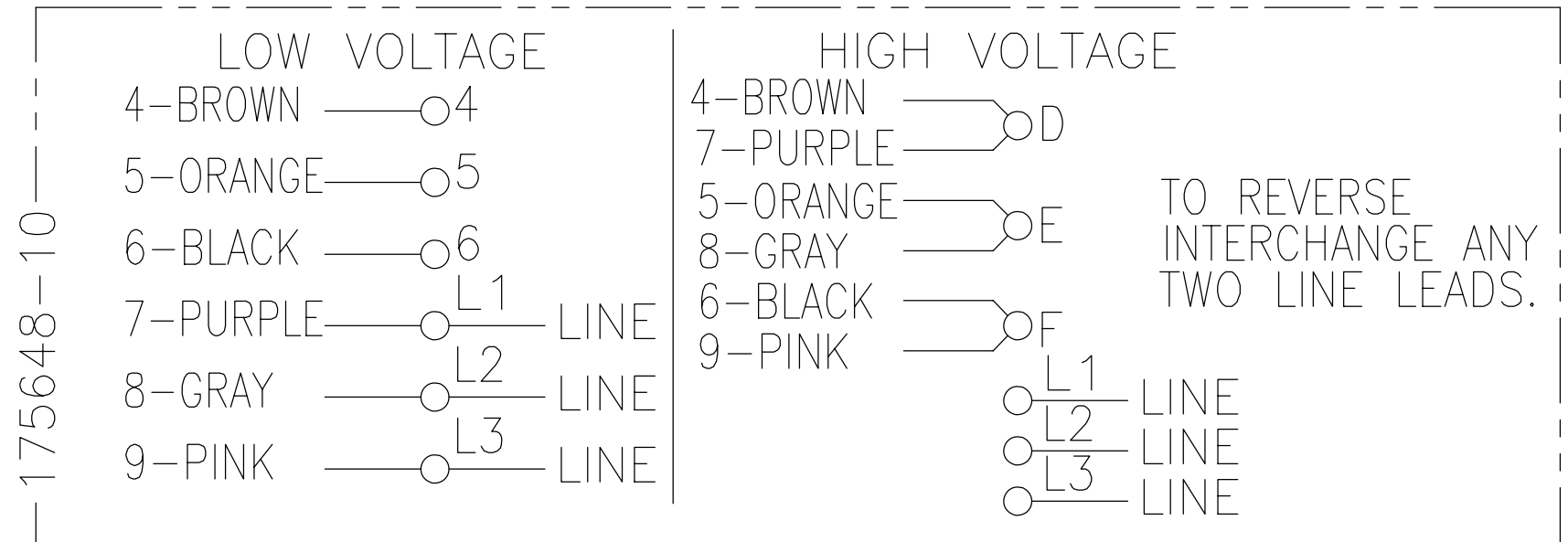
2

1

| | | | | | |
|-----------|-------------|---------------|------------|---------------|------------|
| REVISION: | ECO | REVISADO POR: | FECHA: | APROBADO POR: | FECHA: |
| C | ECO-0027036 | J. COX | 11-19-2012 | C. McREYNOLDS | 11-19-2012 |

B

B



NOTAS:

1. LA CAJA PUNTEADA REPRESENTA EL AREA TOTAL DE IMPRESION PERMITIDA PARA EL DIAGRAMA DE CONEXION AJUSTADO EN (2.13 X .75) [(541.0 X 19.1)]. VER LA PLACA DE DATOS EN EL DIBUJO 170500 O 170501 PARA UBICACION.
2. CARACTERES DEBEN ESTAR A UNA ALTURA MINIMA DE .03[.8] A UNA MAXIMA DE .06[1.5].
3. LOS DETALLES NO SERAN COPIADOS AL DIBUJO, PERO DEBEN SER PRODUCIDOS DESDE EL BOCETO ORIGINAL PROPORCIONADO.

A

A

| | | | | | |
|---|--|--|------------|--|---|
| CARACTERISTICAS DE GEOMETRIA Y SIMBOLOS ▽ PLANICIDAD — RECTITUD < ANGULARIDAD ⊥ PERPENDICULARIDAD (A ESCUADRA) // PARALELISMO ○ REDONDEZ (CIRCULARIDAD) ∅ CILINDRICIDAD △ PERFIL DE CUALQUIER SUPERFICIE ∩ PERFIL DE CUALQUIER LINEA ↗ VARIACION ⊕ POSICION REAL ⊙ CONCENTRICIDAD = SIMETRIA ASME Y14.5M 1994 | A MENOS QUE SE ESPECIFIQUE DE OTRA MANERA, LAS TOLERANCIAS DE LAS DIMS; SON LAS SIGUIENTES: PULG $\pm .1$ $\pm .02$ $\pm .005$ $\pm .0005$ mm ± 0.5 ± 0.13 ± 0.013 ANG. $\pm .50$ GRADOS ELIMINAR REBABAS Y ORILLAS FILOSAS DEL BORDE. PULG .003-.015 mm 0.1-0.4 FILETEAR ESQUINA: PULG .020 mm 0.5 MAQUINAR SUPERFICIES PULG $\frac{125}{}$ mm $\frac{3.2}{}$ DIMS METRICAS MOSTRADAS [PARENTESIS] | DIBUJADO POR: PLM | 02-17-1989 | REGAL-BELOIT CORPORATION | |
| | | APROBADO POR: MH | 02-21-1989 | | DESCRIPCION: CONN DIAGRAM-NAMEPLATE |
| | | TERCER ANGULO DE PROYECCION | | FECHA EDS: 11-11-2011 REV. FORMATO: H | TAMAÑO: B NUMERO DE DIBUJO: 17564810 |
| | | CONFIDENCIAL: ESTE DIBUJO Y SU INFORMACION SON PROPIEDAD DE USO EXCLUSIVO Y CONFIDENCIAL DE REGAL-BELOIT CORPORATION Y NO DEBERAN SER REVELADOS, DUPLICADOS, DISTRIBUIDOS O USARSE DE OTRA MANERA SIN EL CONSENTIMIENTO ESCRITO DE REGAL-BELOIT CORPORATION. -TODOS LOS DERECHOS RESERVADOS. | | | ESCALA: NONE HOJA: 1 |

4

3

2

1