

PRODUCT INFORMATION PACKET



Model No: H1039L

Catalog No: H1039L

Fan and Blower Motor, 5.0 HP, 3 Ph, 60 Hz, 208-230-460 V, 3600 RPM, R56HZ Frame, DP



Regal and Century are trademarks of Regal Rexnord Corporation or one of its affiliated companies.

©2023 Regal Rexnord Corporation, All Rights Reserved. MC017097E





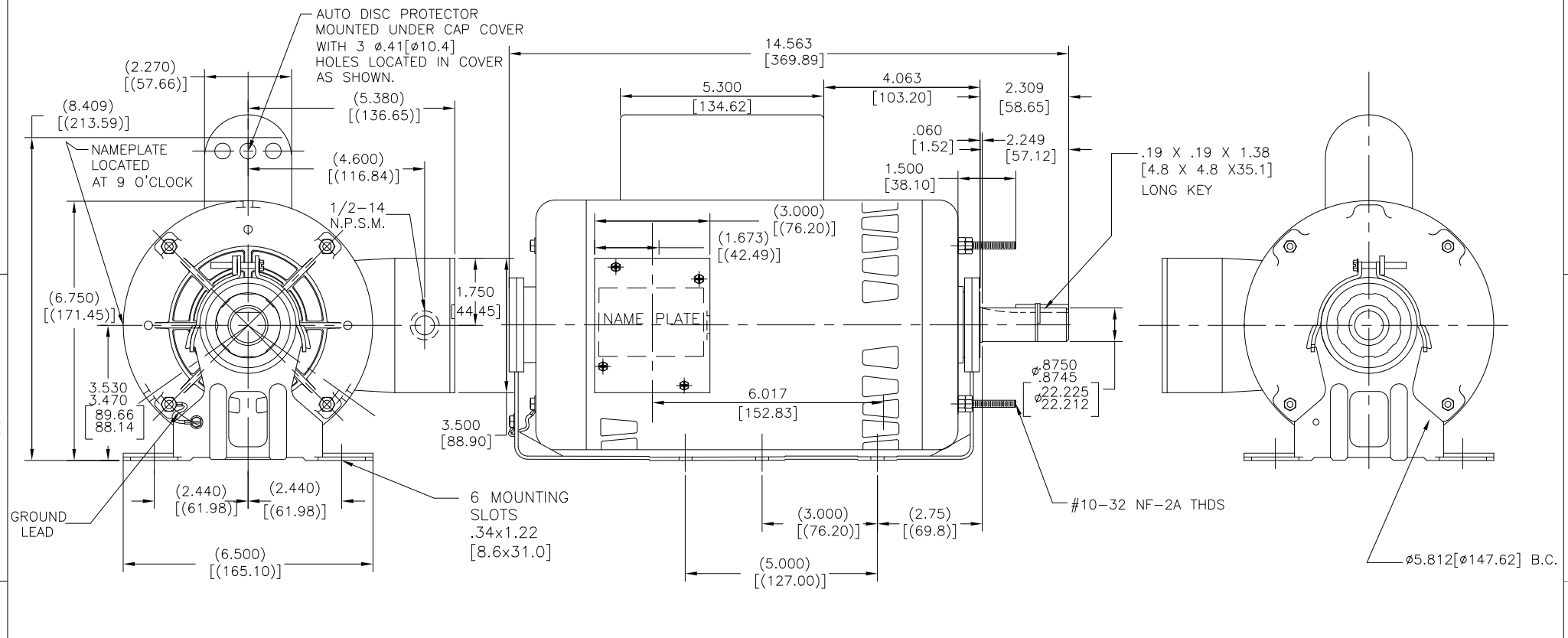
Nameplate Specifications

Phase	3	Output HP	5.0 Hp
Output KW	3.7 kW	Voltage	208-230-460 V
Speed	3450 rpm	Service Factor	1.15
Frame	R56HZ	Enclosure	Drip Proof
Thermal Protection	Thermally Protected	Efficiency	86.5 %
Ambient Temperature	40 °C	Frequency	60 Hz
Current	13.4-13.2/6.6 A	Duty	Continuous
Insulation Class	B	UL	Recognized
CSA	Y	CE	N
Number of Speeds	1		

Technical Specifications

Electrical Type	Polyphase, Induction Type, Single Or Dual Voltage	Starting Method	Across The Line
Poles	2	Rotation	Reversible Counterclockwise
Mounting	Cushion Base	Drive End Bearing	Ball
Opp Drive End Bearing	Ball	Frame Material	Rolled Steel
Shaft Type	Keyed	Overall Length	14.56 in
Frame Length	8.75 in	Shaft Diameter	0.875 in
Shaft Extension	2.309 in		
Outline Drawing	H1039L-S01	Connection Drawing	17050303.PCX

This is an uncontrolled document once printed or downloaded and is subject to change without notice. Date Created:09/27/2023



NAMEPLATE DATA	EXTERNAL CONNECTION DIAGRAM	NOTES
MODEL: 196563 CUST PN: H1039L HP: 5.0 SF: 1.15 ROT: RCC RPM: 3450 TYPE: SC CODE: K FORM: FRAME: R56HZ VOLTS: 208-230/460 AMPS: 13.4-13.2/6.6 MAX AMPS: SF AMPS: PH: 3 HZ: 60 INS: B AMB: 40°C DUTY: CONT ENCLOSURE: ODP THERMALLY PROTECTED	<p>LOW VOLTAGE</p> <p>HIGH VOLTAGE</p> <p>TO REVERSE INTERCHANGE EXTERNAL CONN. TO ANY 2 LINE LEADS</p>	<ol style="list-style-type: none"> ALL DIMENSIONS SHOWN IN PARENTHESIS ARE REFERENCE DIMENSION END PLAY NOT TO EXCEED .010 [.25] MEASURED WITH NO THRUST CONNECT FOR LOW VOLTAGE

PERFORMANCE CURVE	APPROVED SAMPLE		
16333512			
UL COMPONENT	CSA		
FILE#	CCN#	FILE#	GUIDE#
E44549	PRGY2	LR4642	4211-01
CUSTOMER	ODP		

DRAWING REVISION	REVISION BY	DATE	TOLERANCES UNLESS OTHERWISE SPECIFIED	DRAWN BY:	
E	SRIKANTH	07/07/2022	DEC. INCH mm ANGLE	TOM ZAHO	
ECO	APPROVED BY	DATE	.X ±0.1 [±2.5]	DATE:	09/29/2008
ECO-0217914	PVR	07/07/2022	.XX ±0.02 [±0.51]	APPROVED BY:	MIKE O
ECO DESCRIPTION			.XXX ±0.005 [±0.127]	DATE:	03/13/2008
UPDATED THURBOLT			.XXXX ±0.0005 [±0.0127]	REFERENCE	
<small>COPYRIGHT REGAL BELOIT AMERICA, INC. ALL RIGHTS RESERVED. PROPRIETARY AND CONFIDENTIAL INFORMATION - THIS DOCUMENT IS THE PROPERTY OF REGAL BELOIT AMERICA, INC. (OWNER) AND CONTAINS OWNER'S PROPRIETARY INFORMATION. ANY PERSON, CORPORATION OR OTHER ENTITY, DUPLICATED, AND/OR USED, EXCEPT BY RECEIVING IT, TO AGREE THAT IT, AND/OR ANY PART OF IT, SHALL NOT BE DISCLOSED TO ANY PERSON, CORPORATION OR OTHER ENTITY, DUPLICATED, AND/OR USED, EXCEPT AS EXPRESSLY APPROVED IN WRITING IN ADVANCE BY OWNER. THIS DOCUMENT SHALL BE RETURNED TO OWNER UPON REQUEST. IT MAY BE SUBJECT TO CERTAIN RESTRICTIONS UNDER APPLICABLE EXPORT CONTROL LAWS AND REGULATIONS.</small>			REMOVE BURRS & BREAK SHARP EDGES .003/015 [076/381] CORNER FILLETS .02 [51] MACHINED SURFACES .125 INCH / mm 3/2 mm SHOWN IN [BRACKETS]	MATERIAL PROCESS/FINISH	SIZE DWG NO H1039L
			THIRD ANGLE PROJECTION		SHEET 1