



Nameplate Specifications

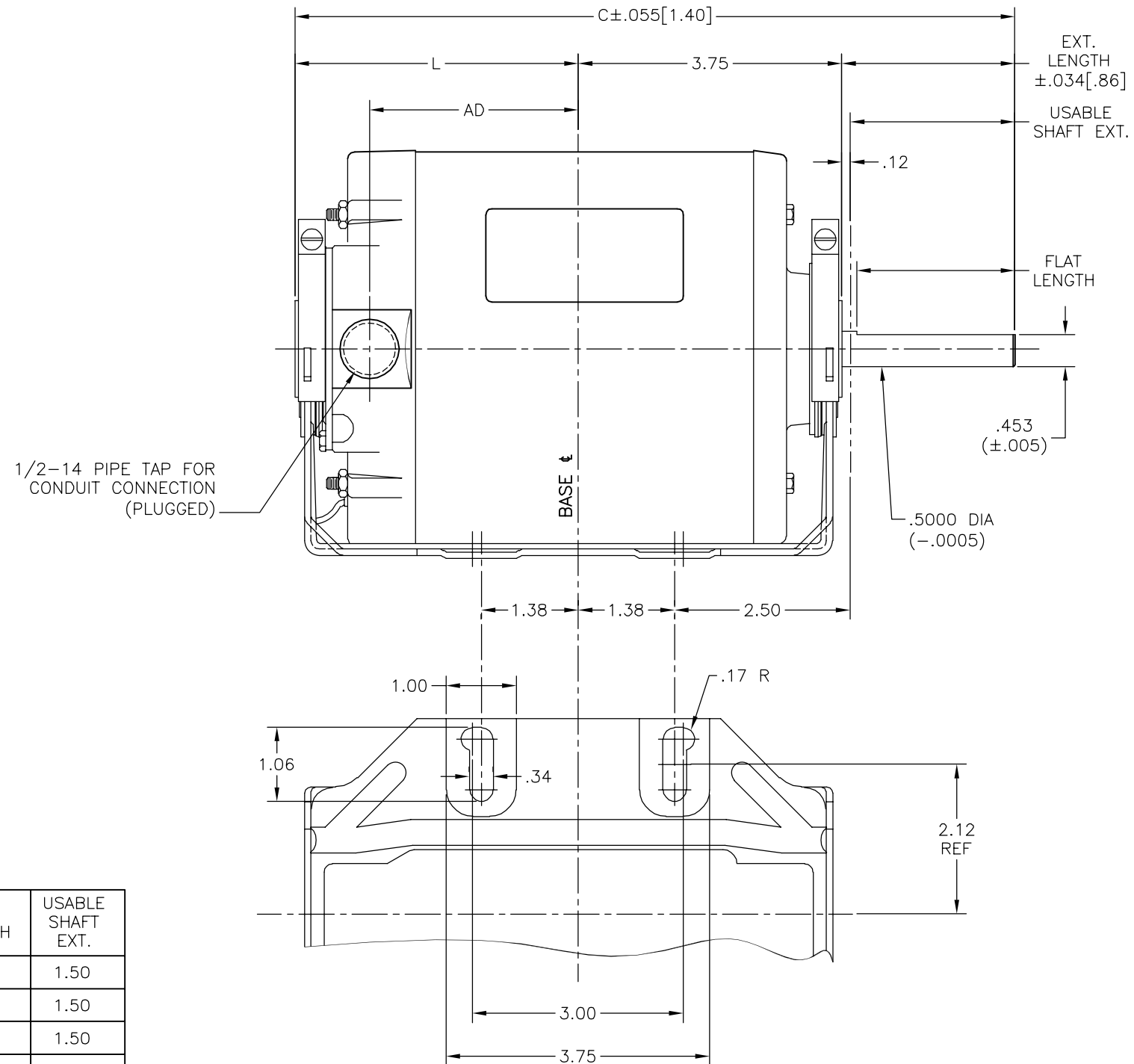
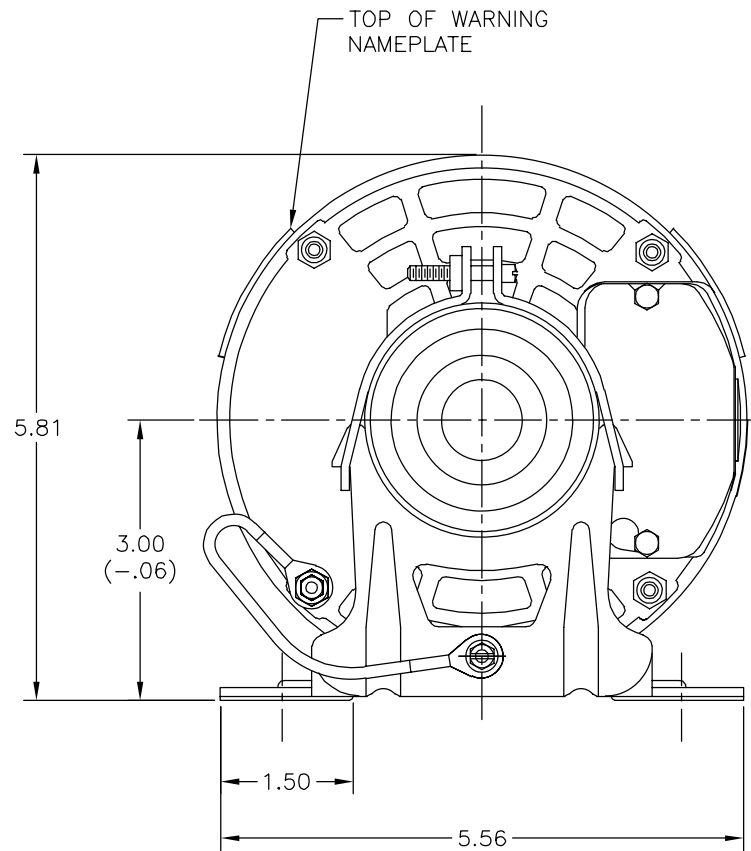
| | | | |
|--------------------|------------|---------------------|---------------|
| Output HP | 1/3 Hp | Output KW | 0.25 kW |
| Frequency | 50 Hz | Voltage | 220 V |
| Current | 3.2 A | Speed | 1425 rpm |
| Service Factor | 1.35 | Phase | 1 |
| Duty | Continuous | Insulation Class | B |
| Frame | 48 | Enclosure | Open Enclosed |
| Thermal Protection | Automatic | Ambient Temperature | 40 °C |
| UL | Recognized | CSA | Y |
| CE | N | Number of Speeds | 1 |

Technical Specifications

| | | | |
|-----------------------|----------------|-------------------|-----------------|
| Electrical Type | Split Phase | Starting Method | Across The Line |
| Poles | 4 | Rotation | Reversible |
| Mounting | Resilient Base | Drive End Bearing | Sleeve |
| Opp Drive End Bearing | Sleeve | Frame Material | Rolled Steel |
| Shaft Type | Flat | Overall Length | 9.40 in |
| Frame Length | 4.94 in | Shaft Diameter | 0.500 in |
| Shaft Extension | 1.5 in | | |
| Connection Drawing | 621417-045B | Outline Drawing | 11668-003-S01 |

This is an uncontrolled document once printed or downloaded and is subject to change without notice. Date Created:11/28/2022

| | | | | | |
|-----|---------|-------------|------------|----------|------------|
| REV | ECO | REV BY | DATE | APPD | DATE |
| F | 0025400 | J.M.Ramirez | 04-13-2012 | R.Rascon | 04-13-2012 |



| FIRST MODEL REF | FRAME LENGTH REF (WEST) | FRAME LENGTH ACTUAL | C | L | AD | EXT. LENGTH | FLAT LENGTH | USABLE SHAFT EXT. |
|-----------------|-------------------------|---------------------|------|------|------|-------------|-------------|-------------------|
| ES48A04A28 | (D48) | 5.312 | 9.90 | 4.53 | 3.47 | 1.62 | 1.12 | 1.50 |
| GF2020L | (48) | 4.312 | 8.90 | 3.53 | 2.47 | 1.62 | 1.12 | 1.50 |
| GF2035 | (B48) | 4.812 | 9.40 | 4.03 | 2.97 | 1.62 | 1.12 | 1.50 |
| 325P301 | (48) | 4.312 | 8.90 | 3.53 | 2.47 | 1.62 | 1.12 | 1.50 |
| S48E66A11 | (48) | 4.312 | 8.90 | 3.53 | 2.47 | 1.62 | 1.12 | 1.50 |

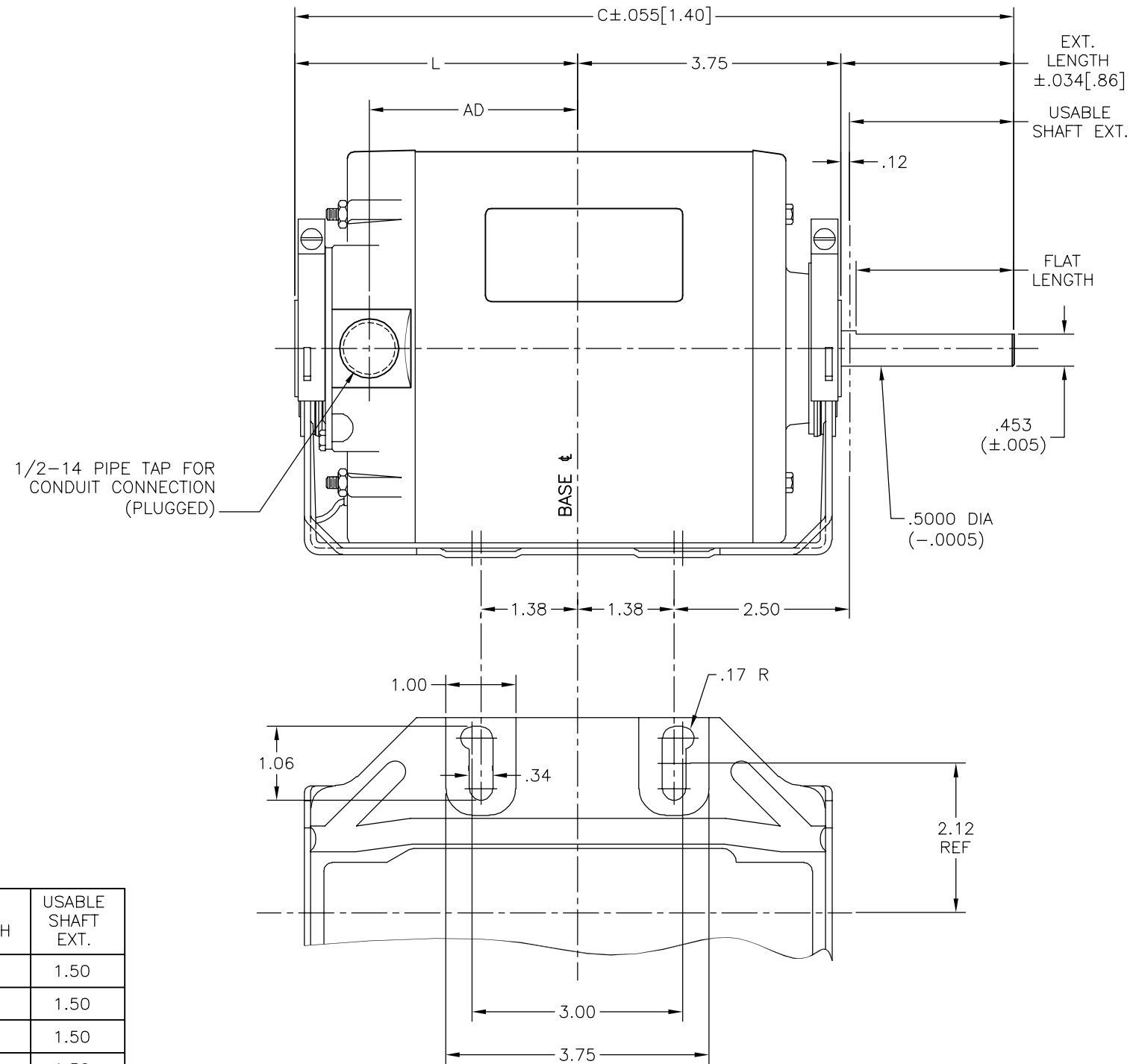
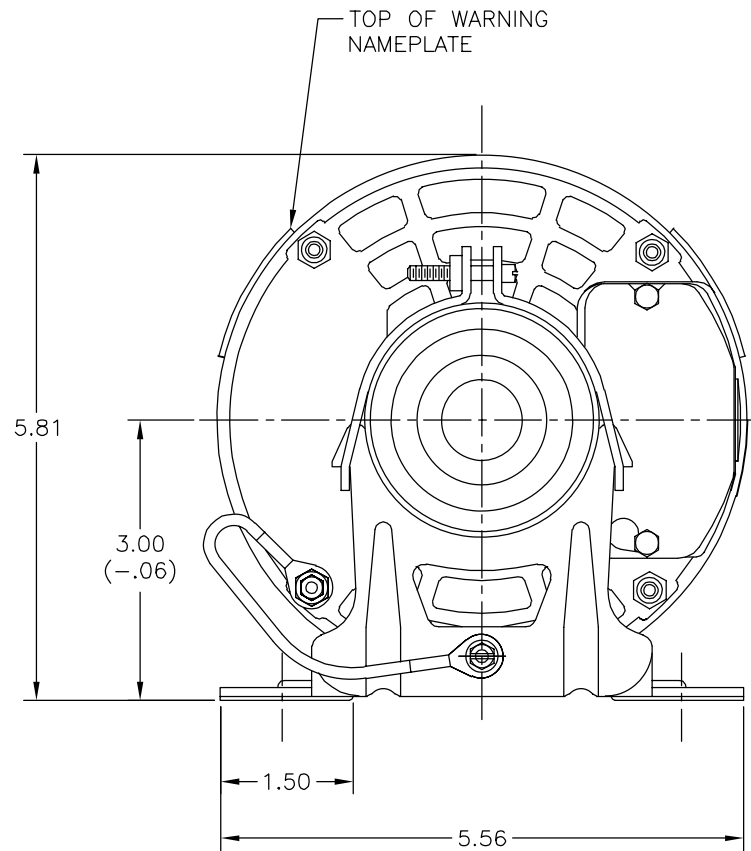
GEOMETRIC CHARACTERISTICS & SYMBOLS
 □ FLATNESS
 — STRAIGHTNESS
 ∠ ANGULARITY
 ⊥ PERPENDICULARITY (SQUARENESS)
 ∥ PARALLELISM
 ○ ROUNDNESS (CIRCULARITY)
 ⌀ CYLINDRICITY
 △ PROFILE OF ANY SURFACE
 ∩ PROFILE OF ANY LINE
 ↗ RUNOUT
 ⊕ TRUE POSITION
 ⊙ CONCENTRICITY
 = SYMMETRY
 ASME Y14.5M 1994

UNLESS OTHERWISE SPECIFIED DIM. TOLERANCES ARE AS FOLLOWS:
 INCH X XX XXX XXXX
 ±.1 ±.02 ±.005 ±.0005
 mm ±0.5 ±0.13 ±0.013
 ANG. ±.50 DEG
 REMOVE BURRS & BREAK SHARP EDGES:
 INCH .003-.015 mm 0.1-0.4
 CORNER FILLETS TO:
 INCH .020 mm 0.5
 MACHINE SURFACES:
 INCH 125 mm 3.2
 METRIC DIMS. SHOWN IN [BRACKETS]

DR BY: J.Blank 07-01-2005
 APPD: J.Blank 07-01-2005
 THIRD ANGLE PROJECTION
 EDS DATE 11-11-2011
 FORMAT REV G
 CONFIDENTIAL: THIS DRAWING AND ITS INFORMATION ARE THE EXCLUSIVE AND CONFIDENTIAL PROPERTY OF REGAL-BELOIT CORPORATION AND ARE NOT TO BE DISCLOSED, DUPLICATED, DISTRIBUTED OR OTHERWISE USED WITHOUT THE WRITTEN CONSENT OF REGAL-BELOIT CORPORATION. -ALL RIGHTS RESERVED.

REGAL-BELOIT CORPORATION
 DESCRIPTION: MODEL-RFHP-48FR OUTLINE
 SIZE C DWG NO 11668-003
 SCALE NONE SHEET 1

| | | | | | |
|-----------|---------|---------------|------------|---------------|------------|
| REVISION: | ECO | REVISADO POR: | FECHA: | APROBADO POR: | FECHA: |
| F | 0025400 | J.M.Ramirez | 04-13-2012 | R.Rascon | 04-13-2012 |



| FIRST MODEL REF | FRAME LENGTH REF (WEST) | FRAME LENGTH ACTUAL | C | L | AD | EXT. LENGTH | FLAT LENGTH | USABLE SHAFT EXT. |
|-----------------|-------------------------|---------------------|------|------|------|-------------|-------------|-------------------|
| ES48A04A28 | (D48) | 5.312 | 9.90 | 4.53 | 3.47 | 1.62 | 1.12 | 1.50 |
| GF2020L | (48) | 4.312 | 8.90 | 3.53 | 2.47 | 1.62 | 1.12 | 1.50 |
| GF2035 | (B48) | 4.812 | 9.40 | 4.03 | 2.97 | 1.62 | 1.12 | 1.50 |
| 325P301 | (48) | 4.312 | 8.90 | 3.53 | 2.47 | 1.62 | 1.12 | 1.50 |
| S48E66A11 | (48) | 4.312 | 8.90 | 3.53 | 2.47 | 1.62 | 1.12 | 1.50 |

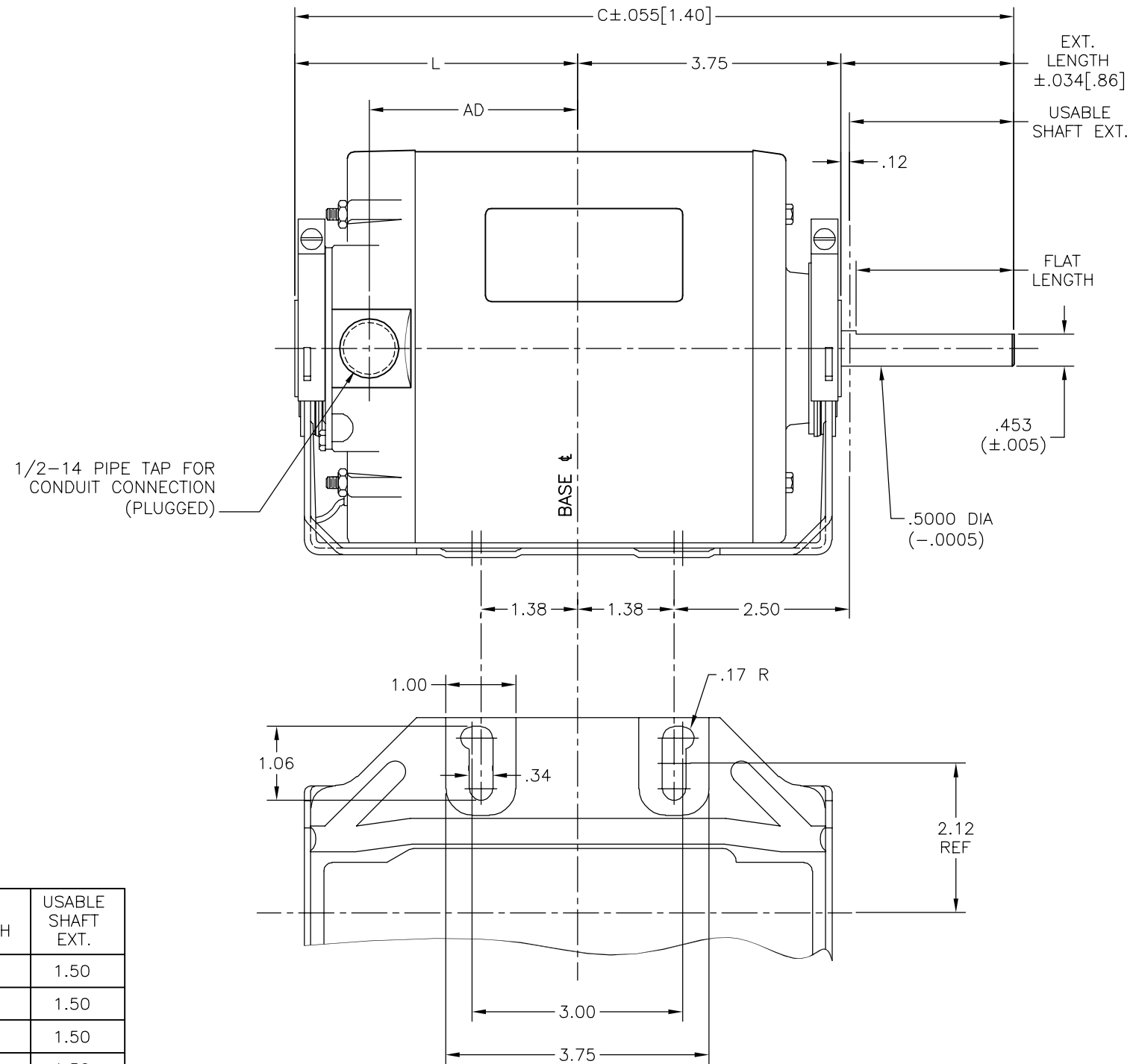
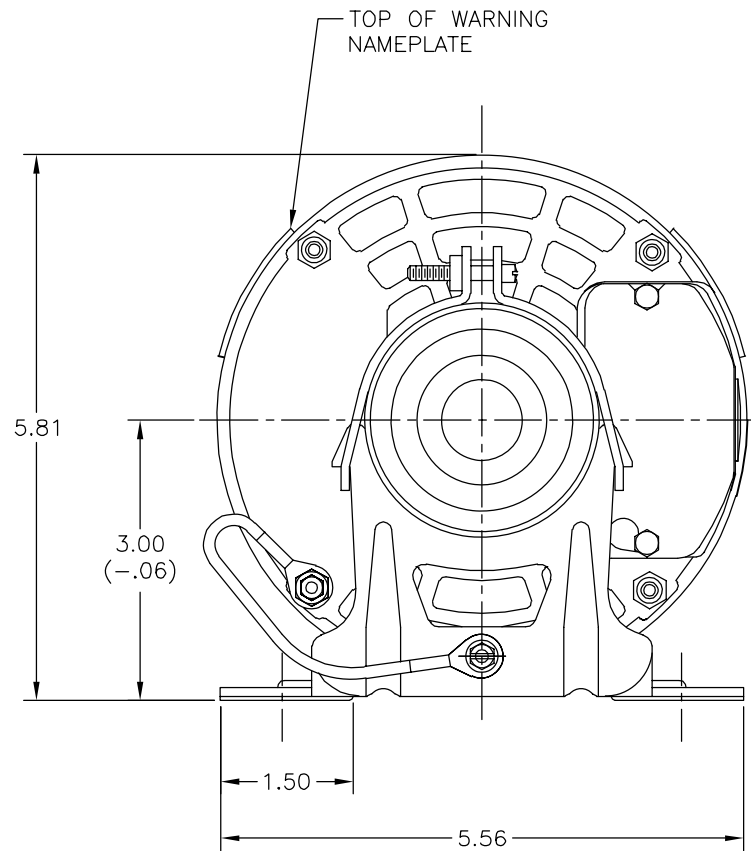
CARACTERISTICAS DE GEOMETRIA Y SIMBOLOS
 □ PLANICIDAD
 — RECTITUD
 < ANGULARIDAD
 ⊥ PERPENDICULARIDAD (A ESCUADRA)
 // PARALELISMO
 ○ REDONDEZ (CIRCULARIDAD)
 ∅ CILINDRICIDAD
 △ PERFIL DE CUALQUIER SUPERFICIE
 ▲ PERFIL DE CUALQUIER LINEA
 ↗ VARIACION
 ⊕ POSICION REAL
 ⊙ CONCENTRICIDAD
 = SIMETRIA

A MENOS QUE SE ESPECIFIQUE DE OTRA MANERA, LAS TOLERANCIAS DE LAS DIMS; SON LAS SIGUIENTES:
 PULG ±.1 ±.02 ±.005 ±.0005
 mm ±0.5 ±0.13 ±0.013
 ANG. ± 50 GRADOS
 ELIMINAR REBABAS Y ORILLAS FILOSAS DEL BORDE.
 PULG .003-.015 mm 0.1-0.4
 FILETEAR ESQUINA: PULG .020 mm 0.5
 MAQUINAR SUPERFICIES
 PULG 125 mm 3.2

DIBUJADO POR: J.Blank 07-01-2005
 APROBADO POR: J.Blank 07-01-2005
 TERCER ANGULO DE PROYECCION
 CONFIDENCIAL: ESTE DIBUJO Y SU INFORMACION SON PROPIEDAD DE USO EXCLUSIVO Y CONFIDENCIAL DE REGAL-BELOIT CORPORATION. Y NO DEBERAN SER REVELADOS, DUPLICADOS, DISTRIBUIDOS O USARSE DE OTRA MANERA SIN EL CONSENTIMIENTO ESCRITO DE REGAL-BELOIT CORPORATION. -TODOS LOS DERECHOS RESERVADOS.

REGAL-BELOIT CORPORATION
 DESCRIPCION: MODEL-RFHP-48FR OUTLINE
 TAMAÑO: C NUMERO DE DIBUJO: 11668-003
 ESCALA: NONE HOJA: 1

| | | | | | |
|----|---------|-------------|------------|----------|------------|
| 版本 | ECO | 编制 | 日期 | 批准 | 日期 |
| F | 0025400 | J.M.Ramirez | 04-13-2012 | R.Rascon | 04-13-2012 |



| FIRST MODEL REF | FRAME LENGTH REF (WEST) | FRAME LENGTH ACTUAL | C | L | AD | EXT. LENGTH | FLAT LENGTH | USABLE SHAFT EXT. |
|-----------------|-------------------------|---------------------|------|------|------|-------------|-------------|-------------------|
| ES48A04A28 | (D48) | 5.312 | 9.90 | 4.53 | 3.47 | 1.62 | 1.12 | 1.50 |
| GF2020L | (48) | 4.312 | 8.90 | 3.53 | 2.47 | 1.62 | 1.12 | 1.50 |
| GF2035 | (B48) | 4.812 | 9.40 | 4.03 | 2.97 | 1.62 | 1.12 | 1.50 |
| 325P301 | (48) | 4.312 | 8.90 | 3.53 | 2.47 | 1.62 | 1.12 | 1.50 |
| S48E66A11 | (48) | 4.312 | 8.90 | 3.53 | 2.47 | 1.62 | 1.12 | 1.50 |

形位公差
 □ 平面度
 — 直线度
 < 倾斜度
 ⊥ 垂直度
 // 平行度
 ○ 圆度
 ⊙ 圆柱度
 △ 面轮廓度
 ⊖ 线轮廓度
 ↗ 圆跳动
 ⊕ 位置度
 ⊗ 同轴度
 ≡ 对称度

ASME Y14.5M 1994

除另有注明
 尺寸公差如下:
 英寸 X XX XXX XXXX
 ±.1 ±.02 ±.005 ±.0005
 毫米 ±0.5 ±0.13 ±0.013
 角度 ±.50 度
 清理毛刺和尖棱
 英寸 .003-.015 毫米 0.1-0.4
 内圆角
 英寸 .020 毫米 0.5
 表面粗糙度
 英制 125 米制 3.2
 米制尺寸显示在 []

绘图: J.Blank 07-01-2005
 批准: J.Blank 07-01-2005
 第三角投影
 图纸格式发布日期 11-11-2011
 图纸格式版本 G
 机密: 本图纸及相关信息所有权归REGAL-BELOIT CORPORATION
 未经REGAL-BELOIT CORPORATION书面授权, 不得泄露、
 复制、传播或作其他用途。—版权所有



名称: MODEL-RFHP-48FR
 OUTLINE
 图幅: C 图号: 11668-003
 比例: NONE 页号: 1