

PRODUCT INFORMATION PACKET



Model No: FD1054
Catalog No: FD1054

Fan and Blower Motor, 1/2 HP, 1 Ph, 60 Hz, 208-230 V, 1625 RPM, 3 Speed, 48 Frame, OPEN



Regal and Century are trademarks of Regal Rexnord Corporation or one of its affiliated companies.
©2022 Regal Rexnord Corporation, All Rights Reserved. MC017097E





Nameplate Specifications

Output HP	1/2 Hp	Output KW	0.37 kW
Frequency	60 Hz	Voltage	208-230 V
Current	2.8 A	Speed	1625 rpm
Service Factor	1	Phase	1
Duty	Air Over	Insulation Class	A
Frame	48Y	Enclosure	Open Enclosed
Thermal Protection	Automatic	Ambient Temperature	40 °C
UL	Recognized	CSA	Y
CE	N	Number of Speeds	3

Technical Specifications

Electrical Type	Permanent Split Capacitor	Starting Method	Across The Line
Poles	4	Rotation	Reversible
Mounting	Resilient Ring/Extended Studs	Motor Orientation	Any
Drive End Bearing	Ball	Opp Drive End Bearing	Ball
Frame Material	Rolled Steel	Shaft Type	Flat
Overall Length	12.05 in	Frame Length	4.50 in
Shaft Diameter	0.500 in	Shaft Extension	6.4 in
Outline Drawing	FD1054-S01	Connection Drawing	614131-111

This is an uncontrolled document once printed or downloaded and is subject to change without notice. Date Created:11/28/2022

GENERAL INFORMATION:

SHAFT RUNOUT: .001 [.025] T.I.R. PER INCH LENGTH OF EXTENSION

BEARINGS: BALL

MOUNTING POSITION: ALL ANGLE

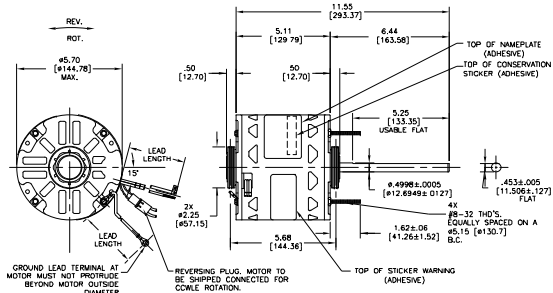
ELECTRICAL DATA:

OVERLOAD PROTECTOR: AUTOMATIC RESET SENSATA 7M Q32

LEADS: NO. 18 GA. .06 [1.52] THK., EPDM 125°C INSUL.

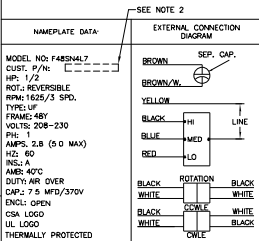
REVERSING LEADS: NO. 18 GA. .03 [.76] THK., XLP 125°C INSUL.

GROUND LEAD: NO. 18 GA. .03 [.76] THK., GREEN INSUL.



NOTES:

1. SNAP RINGS 615035 4 REQUIRED TO BE PACKED WITH EACH MOTOR
2. DISTRIBUTION CUST. P/N: FD1054 GRAINER; CUST. P/N: 4MGT0
3. THE SYMBOL OF CTO: ▲ (NO CTO ON THIS DRAWING)
4. MEET THE REQUIREMENT OF ROHS AND REACH: SEE EPO00014_5.1



GREEN(GRD)	12/13 [305/350]	#10 EYELET
BLACK/WHITE	3/5 [76/127]	REVERSING PLUG
BROWN	26/28 [660/711]	.25[6.35] FLAG
BROWN/WHITE	26/28 [660/711]	.25[6.35] FLAG
YELLOW	26/28 [660/711]	.50[12.70] SKIN
BLACK	26/28 [660/711]	.50[12.70] SKIN
BLUE	26/28 [660/711]	.50[12.70] SKIN
RED	26/28 [660/711]	.50[12.70] SKIN
COLOR	LENGTH	TERMINAL OR STRIP LENGTH

REGAL-BELOIT CORPORATION (RBC) PROVIDES TECHNICAL ASSISTANCE TO OUR CUSTOMERS IN SEVERAL AREAS. SINCE RBC DOES NOT RECEIVE ALL DATA CONCERNING THE USE AND APPLICATION OF THE MOTOR, THE SUITABILITY OF THE MOTOR FOR THE APPLICATION MUST BE DETERMINED BY THE CUSTOMER.

DIMENSIONS WITHOUT TOLERANCES ARE FOR REFERENCE ONLY.

MAIN FR. - OLE	OPEN
END FR. - OLE	OPEN
MAIN FR. - LE	OPEN
END FR. - LE	OPEN

PERFORMANCE CURVE NO	TORQUE @ 1625 RPM (25°C)	APPROVED SAMPLE	UL COMPONENT				CSA	
			FILE #	CNN #	FILE #	CLASS #		
C23338	38.0 OZ. FT.	EX11400	E46412	PRC2	LR43341	4211-01		

LEAD DATA

ISSUING REVISION NUMBER BY	DATE
1	04-21-2021
2	04-21-2021
3	04-21-2021
4	04-21-2021
5	04-21-2021
6	04-21-2021
7	04-21-2021
8	04-21-2021
9	04-21-2021
10	04-21-2021
11	04-21-2021
12	04-21-2021
13	04-21-2021
14	04-21-2021
15	04-21-2021
16	04-21-2021
17	04-21-2021
18	04-21-2021
19	04-21-2021
20	04-21-2021
21	04-21-2021
22	04-21-2021
23	04-21-2021
24	04-21-2021
25	04-21-2021
26	04-21-2021
27	04-21-2021
28	04-21-2021
29	04-21-2021
30	04-21-2021
31	04-21-2021
32	04-21-2021
33	04-21-2021
34	04-21-2021
35	04-21-2021
36	04-21-2021
37	04-21-2021
38	04-21-2021
39	04-21-2021
40	04-21-2021
41	04-21-2021
42	04-21-2021
43	04-21-2021
44	04-21-2021
45	04-21-2021
46	04-21-2021
47	04-21-2021
48	04-21-2021
49	04-21-2021
50	04-21-2021

ENCLOSURE

ISSUING REVISION NUMBER BY	DATE
1	04-21-2021
2	04-21-2021
3	04-21-2021
4	04-21-2021
5	04-21-2021
6	04-21-2021
7	04-21-2021
8	04-21-2021
9	04-21-2021
10	04-21-2021
11	04-21-2021
12	04-21-2021
13	04-21-2021
14	04-21-2021
15	04-21-2021
16	04-21-2021
17	04-21-2021
18	04-21-2021
19	04-21-2021
20	04-21-2021
21	04-21-2021
22	04-21-2021
23	04-21-2021
24	04-21-2021
25	04-21-2021
26	04-21-2021
27	04-21-2021
28	04-21-2021
29	04-21-2021
30	04-21-2021
31	04-21-2021
32	04-21-2021
33	04-21-2021
34	04-21-2021
35	04-21-2021
36	04-21-2021
37	04-21-2021
38	04-21-2021
39	04-21-2021
40	04-21-2021
41	04-21-2021
42	04-21-2021
43	04-21-2021
44	04-21-2021
45	04-21-2021
46	04-21-2021
47	04-21-2021
48	04-21-2021
49	04-21-2021
50	04-21-2021

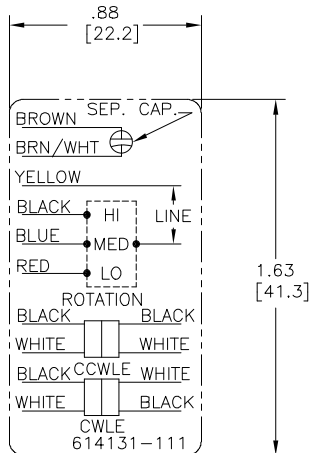
Regal Beloit America, Inc.

MODEL-RFHP-48FR
OUTLINE

SIZE/DWG NO

FD1054

SHEET 1



NOTES:

1. FOR USE WITH 614129 NAMEPLATE BLANK
2. ----- INDICATES DIMENSION LIMITS
3. DIE TO BE MADE FROM MASTER SUPPLIED BY A. O. SMITH CORPORATION
4. DIE MUST PRODUCE A LEGIBLE IMPRESSION.

DRAWING REVISION		REVISION BY	DATE	TOLERANCES UNLESS OTHERWISE SPECIFIED		DRAWN BY:		Regal Beloito America, Inc.	
D		J. RUPERT	04-14-2021	DEC.	INCH	mm	ANGLE		
ECO		APPROVED BY	DATE	.X	±0.1	[±2.5]	±0.5°	05-25-2021	
NMR-0208129		J. RUPERT	04-14-2021	.XX	±0.02	[±0.51]		APPROVED BY:	
ECO DESCRIPTION				.XXX	±0.005	[±0.127]		T. RILEY	
UP ISSUED				.XXXX	±0.0005	[±0.0127]		DATE:	
				REMOVE BURRS & BREAK SHARP EDGES .003/.015 [076/381] X 45°				05-25-2010	
				CORNER FILLETS R.02 [51]				DESCRIPTION	
				MACHINED SURFACES				CONNECTION DIAGRAM	
				4 of 4				EXTERNAL	
				mm SHOWN IN [BRACKETS]				MATERIAL	
								PROCESS/FINISH	
								REFERENCE	
								SIZE DWG NO	
								614131-111	
								SHEET	
								1	