

PRODUCT INFORMATION PACKET



Model No: F262
Catalog No: F262
Ventilation Motor, 1/3-.09 HP, 1 Ph, 60 Hz, 115 V, 1800 RPM, J56CZ Frame, DP



Regal and Century are trademarks of Regal Rexnord Corporation or one of its affiliated companies.
©2023 Regal Rexnord Corporation, All Rights Reserved. MC017097E





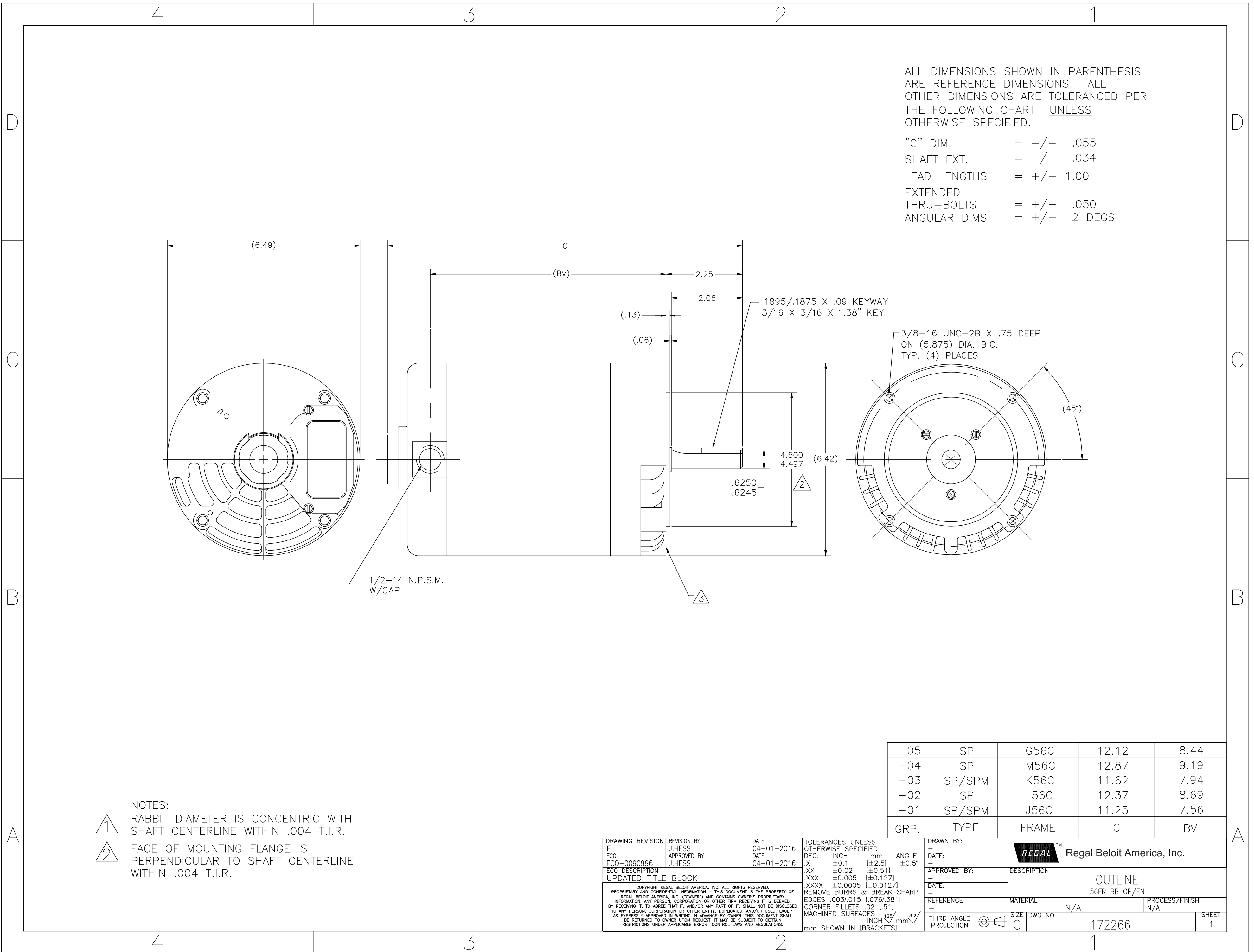
Nameplate Specifications

Output HP	1/3-.09 Hp	Output KW	0.25 kW
Frequency	60 Hz	Voltage	115 V
Current	5.4/2.3 A	Speed	1725/1140 rpm
Service Factor	1.35	Phase	1
Duty	Continuous	Insulation Class	B
Frame	J56CZ	Enclosure	Drip Proof
Thermal Protection	Thermally Protected	Ambient Temperature	40 °C
UL	Recognized	CSA	Y
CE	N	Number of Speeds	1

Technical Specifications

Electrical Type	Split Phase, Induction Run, Multi-Speed	Starting Method	Across The Line
Poles	4/6	Rotation	Reversible Counterclockwise
Mounting	Round	Drive End Bearing	Ball
Opp Drive End Bearing	Ball	Frame Material	Rolled Steel
Shaft Type	Keyed	Overall Length	11.25 in
Frame Length	5.13 in	Shaft Diameter	0.625 in
Shaft Extension	2.25 in		
Outline Drawing	172266-S01	Connection Drawing	17050311.PCX

This is an uncontrolled document once printed or downloaded and is subject to change without notice. Date Created:03/15/2023



ALL DIMENSIONS SHOWN IN PARENTHESIS ARE REFERENCE DIMENSIONS. ALL OTHER DIMENSIONS ARE TOLERANCED PER THE FOLLOWING CHART UNLESS OTHERWISE SPECIFIED.

"C" DIM.	= +/- .055
SHAFT EXT.	= +/- .034
LEAD LENGTHS	= +/- 1.00
EXTENDED THRU-BOLTS	= +/- .050
ANGULAR DIMS	= +/- 2 DEGS

- NOTES:
- ① RABBIT DIAMETER IS CONCENTRIC WITH SHAFT CENTERLINE WITHIN .004 T.I.R.
 - ② FACE OF MOUNTING FLANGE IS PERPENDICULAR TO SHAFT CENTERLINE WITHIN .004 T.I.R.

-05	SP	G56C	12.12	8.44
-04	SP	M56C	12.87	9.19
-03	SP/SPM	K56C	11.62	7.94
-02	SP	L56C	12.37	8.69
-01	SP/SPM	J56C	11.25	7.56
GRP.	TYPE	FRAME	C	BV

DRAWING REVISION F	REVISION BY J.HESS	DATE 04-01-2016	TOLERANCES UNLESS OTHERWISE SPECIFIED		DRAWN BY:	REGAL™ Regal Beloit America, Inc.
ECO ECO-0090996	APPROVED BY J.HESS	DATE 04-01-2016	DEC.	INCH	mm	
ECO DESCRIPTION UPDATED TITLE BLOCK			.X	±0.1	[±2.5]	±0.5°
<small>COPYRIGHT REGAL BELOIT AMERICA, INC. ALL RIGHTS RESERVED. PROPRIETARY AND CONFIDENTIAL INFORMATION - THIS DOCUMENT IS THE PROPERTY OF REGAL BELOIT AMERICA, INC. (OWNER) AND CONTAINS OWNER'S PROPRIETARY INFORMATION. ANY PERSON, CORPORATION OR OTHER FIRM RECEIVING IT IS DEEMED, BY RECEIVING IT, TO AGREE THAT IT, AND/OR ANY PART OF IT, SHALL NOT BE DISCLOSED TO ANY PERSON, CORPORATION OR OTHER ENTITY, DUPLICATED, AND/OR USED, EXCEPT AS EXPRESSLY APPROVED IN WRITING IN ADVANCE BY OWNER. THIS DOCUMENT SHALL BE RETURNED TO OWNER UPON REQUEST. IT MAY BE SUBJECT TO CERTAIN RESTRICTIONS UNDER APPLICABLE EXPORT CONTROL LAWS AND REGULATIONS.</small>			.XX	±0.02	[±0.51]	
			.XXX	±0.005	[±0.127]	
			.XXXX	±0.0005	[±0.0127]	
			REMOVE BURRS & BREAK SHARP EDGES .003/.015 [0.076/.381]	APPROVED BY:		DESCRIPTION
			CORNER FILLETS .02 [.51]	DATE:		OUTLINE
			MACHINED SURFACES 125/INCH 3.2/mm	REFERENCE		56FR BB OP/EN
				MATERIAL		N/A
				PROCESS/FINISH		N/A
				THIRD ANGLE PROJECTION		SIZE DWG NO
				C		172266
				SHEET		1