

PRODUCT INFORMATION PACKET



Model No: C771

Catalog No: C771

Condenser Fan Motor, 1.5 HP, 1 Ph, 60 Hz, 460/200-230 V, 1200 RPM, P56Y Frame, OPEN



Regal and Century are trademarks of Regal Rexnord Corporation or one of its affiliated companies.

©2023 Regal Rexnord Corporation, All Rights Reserved. MC017097E





Nameplate Specifications

Output HP	1.5 Hp	Output KW	1.1 kW
Frequency	60 Hz	Voltage	460/200-230 V
Current	3.3/6.6 A	Speed	1075 rpm
Service Factor	1	Phase	1
Duty	Continuous	Insulation Class	B
Frame	P56Y	Enclosure	Open Enclosed
Thermal Protection	Thermally Protected	Ambient Temperature	60 °C
UL	Recognized	CSA	Y
CE	N	Number of Speeds	1

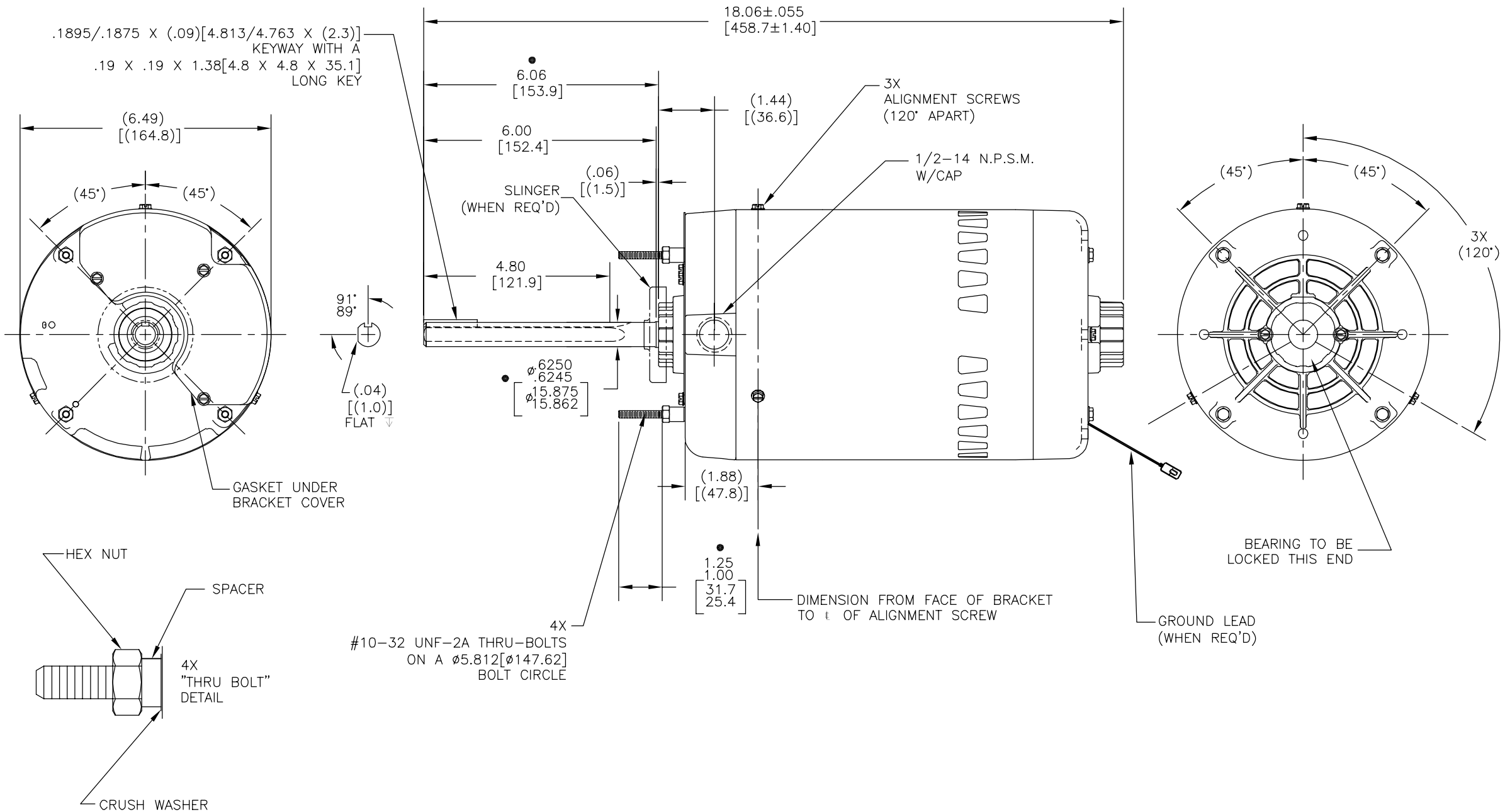
Technical Specifications

Electrical Type	Permanent Split Capacitor, Single Or Dual Voltage	Starting Method	Across The Line
Poles	6	Rotation	Reversible Clockwise
Mounting	Round Belly Band	Drive End Bearing	Ball
Opp Drive End Bearing	Ball	Frame Material	Rolled Steel
Shaft Type	Keyed	Overall Length	18.06 in
Frame Length	8.00 in	Shaft Diameter	0.625 in
Shaft Extension	6.06 in		
Connection Drawing	17050612.PCX	Outline Drawing	C771-S01

This is an uncontrolled document once printed or downloaded and is subject to change without notice. Date Created:02/16/2023

REV	ECO	REV BY	DATE	APPD	DATE
B	0025374	F.NAVARRO	04-16-2012	R.RASCON	04-16-2012

ALL DIMENSIONS SHOWN IN PARENTHESIS ARE REFERENCE DIMENSIONS.



#10-32 UNF-2A THRU-BOLTS ON A $\phi 5.812$ [147.62] BOLT CIRCLE

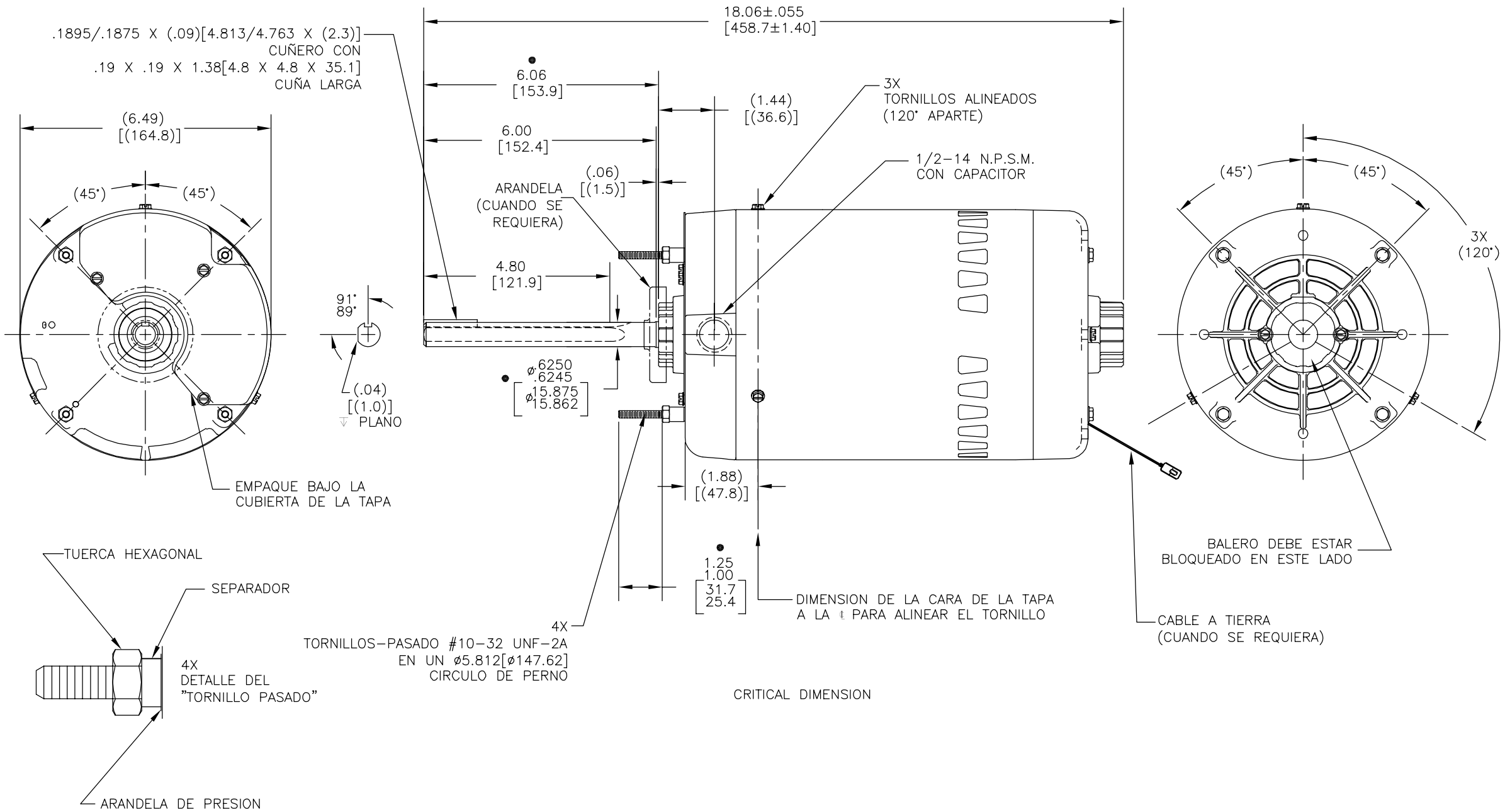
FRAME: P56Y TYPE: CX

● CRITICAL DIMENSION

<p>GEOMETRIC CHARACTERISTICS & SYMBOLS</p> <ul style="list-style-type: none"> ▭ FLATNESS - STRAIGHTNESS ∠ ANGULARITY ⊥ PERPENDICULARITY (SQUARENESS) ∥ PARALLELISM ○ ROUNDNESS (CIRCULARITY) ⊘ CYLINDRICITY △ PROFILE OF ANY SURFACE ⌒ PROFILE OF ANY LINE ↗ RUNOUT ⊕ TRUE POSITION ◎ CONCENTRICITY = SYMMETRY <p>ASME Y14.5M 1994</p>	<p>UNLESS OTHERWISE SPECIFIED DIM. TOLERANCES ARE AS FOLLOWS:</p> <p>INCH X XX XXX XXXX ±.1 ±.02 ±.005 ±.0005 mm ±0.5 ±0.13 ±0.013</p> <p>ANG. ±.50 DEG</p> <p>REMOVE BURRS & BREAK SHARP EDGES: INCH .003-.015 mm 0.1-0.4</p> <p>CORNER FILLETS TO: INCH .020 mm 0.5</p> <p>MACHINE SURFACES: INCH 125 mm 3.2</p> <p>METRIC DIMS. SHOWN IN [BRACKETS]</p>	DR BY: T.ZHAO	06-01-2011	<p>REGAL REGAL-BELOIT CORPORATION</p> <p>DESCRIPTION: OUTLINE</p> <p>SIZE: C DWG NO: C771</p> <p>SCALE: NONE SHEET: 1</p>		
		APPD: B.SHEN	06-01-2011		EDS DATE: 11-11-2011	
		THIRD ANGLE PROJECTION	FORMAT REV: G		<p>CONFIDENTIAL: THIS DRAWING AND ITS INFORMATION ARE THE EXCLUSIVE AND CONFIDENTIAL PROPERTY OF REGAL-BELOIT CORPORATION AND ARE NOT TO BE DISCLOSED, DUPLICATED, DISTRIBUTED OR OTHERWISE USED WITHOUT THE WRITTEN CONSENT OF REGAL-BELOIT CORPORATION. -ALL RIGHTS RESERVED.</p>	

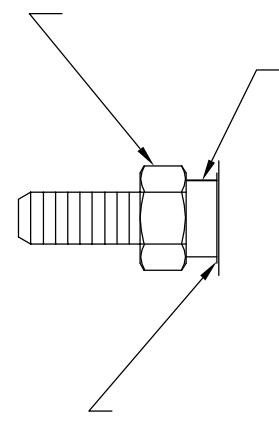
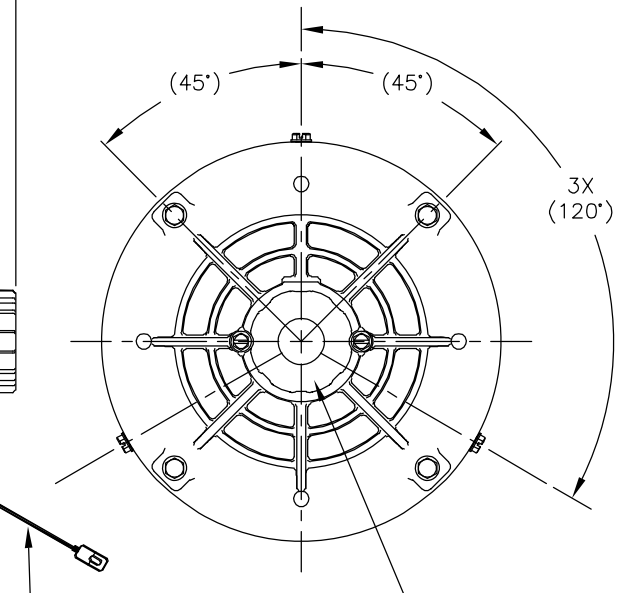
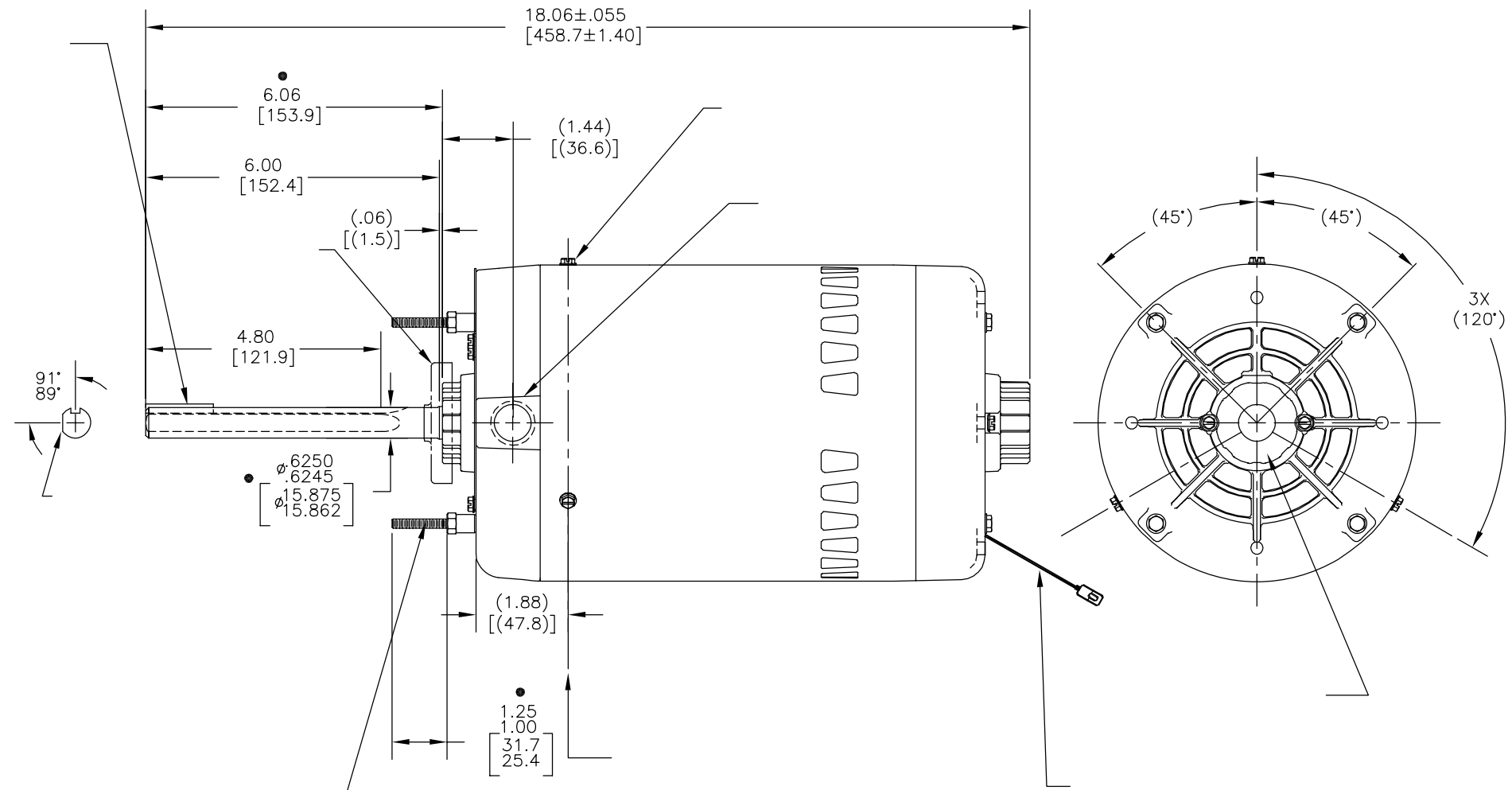
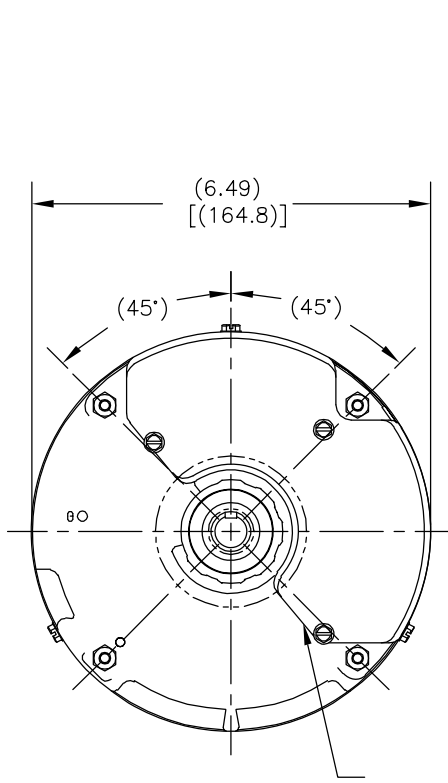
REVISION:	ECO	REVISADO POR:	FECHA:	APROBADO POR:	FECHA:
B	0025374	F.NAVARRO	04-16-2012	R.RASCON	04-16-2012

TODAS LAS DIMENSIONES EN PARENTESIS SON DIMENSIONES DE REFERENCIA.



CARCAZA: P56Y TIPO: CX		● DIMENSION CRITICA		DIBUJADO POR: T.ZHAO		06-01-2011			
<p> CARACTERISTICAS DE GEOMETRIA Y SIMBOLOS ▽ PLANICIDAD — RECTITUD ∠ ANGULARIDAD ⊥ PERPENDICULARIDAD (A ESCUADRA) // PARALELISMO ○ REDONDEZ (CIRCULARIDAD) ∅ CILINDRICIDAD △ PERFIL DE CUALQUIER SUPERFICIE ∩ PERFIL DE CUALQUIER LINEA / VARIACION ⊕ POSICION REAL ⊙ CONCENTRICIDAD = SIMETRIA </p>		<p> A MENOS QUE SE ESPECIFIQUE DE OTRA MANERA, LAS TOLERANCIAS DE LAS DIMS; SON LAS SIGUIENTES: PULG X XX XXX XXXX ±.1 ±.02 ±.005 ±.0005 mm ±0.5 ±0.13 ±0.013 ANG. ±.50 GRADOS ELIMINAR REBABAS Y ORILLAS FILOSAS DEL BORDE. PULG .003-.015 mm 0.1-0.4 FILETEAR ESQUINA: PULG .020 mm 0.5 MAQUINAR SUPERFICIES PULG 125 mm 3.2 </p>		APROBADO POR: B.SHEN		06-01-2011			
ASME Y14.5M 1994		DIMS METRICAS MOSTRADAS [PARENTESIS]		TERCER ANGULO DE PROYECCION		FECHA EDS: 11-11-2011 REV. FORMATO: G		TAMAÑO: C NUMERO DE DIBUJO: C771	
				CONFIDENCIAL: ESTE DIBUJO Y SU INFORMACION SON PROPIEDAD DE USO EXCLUSIVO Y CONFIDENCIAL DE REGAL-BELOIT CORPORATION. Y NO DEBERAN SER REVELADOS, DUPLICADOS, DISTRIBUIDOS O USARSE DE OTRA MANERA SIN EL CONSENTIMIENTO ESCRITO DE REGAL-BELOIT CORPORATION. -TODOS LOS DERECHOS RESERVADOS.		ESCALA: NONE		HOJA: 1	

版本	ECO	编制	日期	批准	日期
B	0025374	F.NAVARRO	04-16-2012	R.RASCON	04-16-2012



- 形位公差
- 平面度
- 直线度
- ∠ 倾斜度
- ⊥ 垂直度
- ∥ 平行度
- 圆度
- ⊘ 圆柱度
- ⌒ 面轮廓度
- 线轮廓度
- ⌒ 圆跳动
- ⊕ 位置度
- ⊙ 同轴度
- ≡ 对称度

ASME Y14.5M 1994

除另有注明
尺寸公差如下:
英寸 X XX XXX XXXX
毫米 ±.1 ±.02 ±.005 ±.0005
毫米 ±0.5 ±0.13 ±0.013
角度 ±.50 度
清理毛刺和尖棱
英寸 .003-.015 毫米 0.1-0.4
内圆角
英寸 .020 毫米 0.5
表面粗糙度
英制 125 米制 3.2
米制尺寸显示在 []

绘图:	T.ZHAO	06-01-2011
批准:	B.SHEN	06-01-2011
第三角投影		图纸格式发布日期 11-11-2011 图纸格式版本 G
机密: 本图纸及相关信息所有权归REGAL-BELOIT CORPORATION。未经REGAL-BELOIT CORPORATION书面授权, 不得泄露、复制、传播或作其他用途。--版权所有		



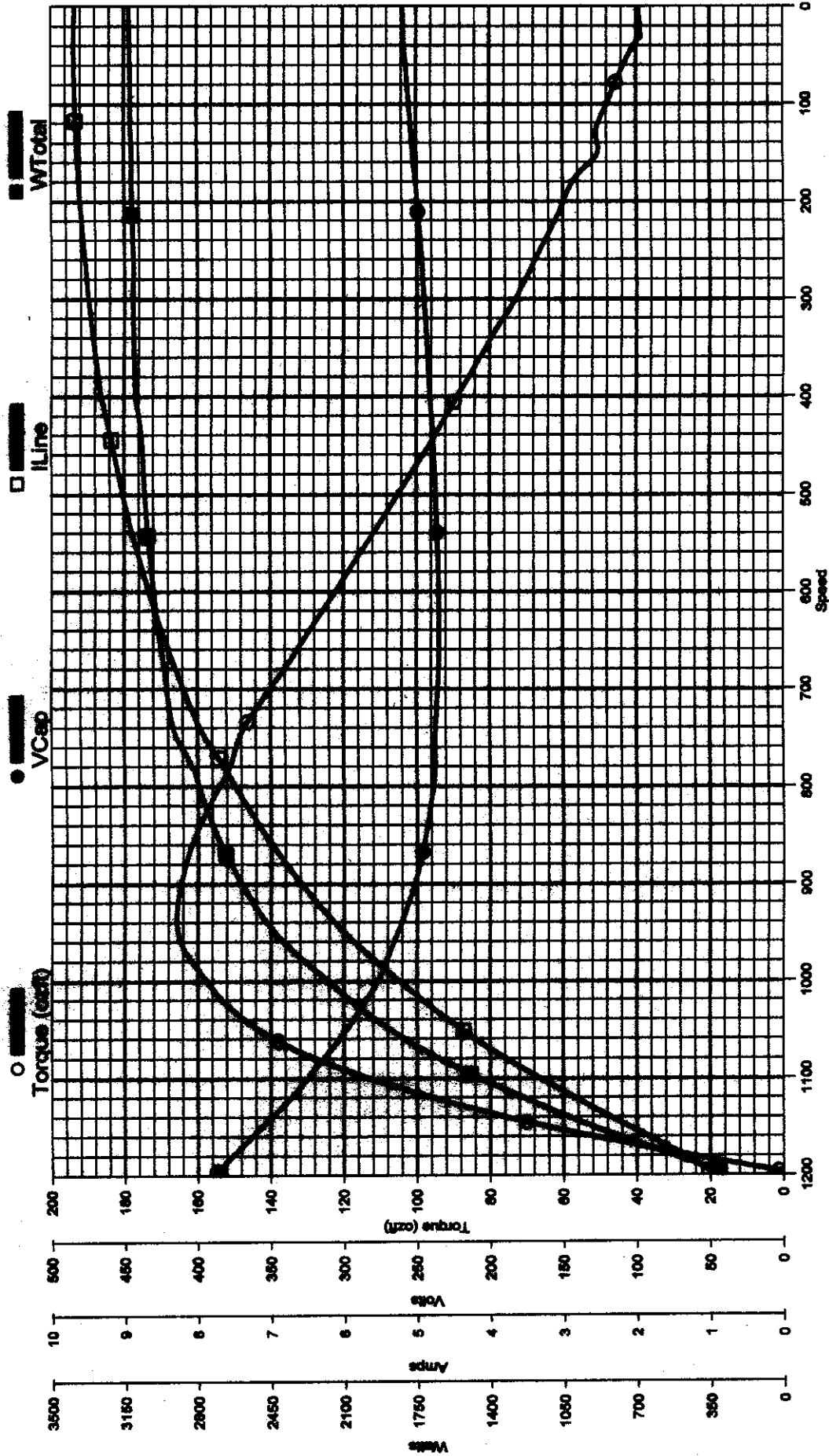
名称	OUTLINE	
图幅	C	图号 C771
比例	NONE	页号 1

AO Smith

C771

Performance Down Project: 0341379 (High Speed)

Wednesday, March 19, 2003 05:27 PM



TRACKING #: 10011329
 SBU: GI
 ENGINEER: D WOOD
 TECHNICIAN: DENNIS
 TORQUE CELL: 500 lb-in
 NP RPM: 1075
 # SPEEDS: 1
 MOTOR #: 1
 COMMENT 2:

CUSTOMER: MCQUAY
 MODEL: 0341379A
 FRAME: 56
 PHASES: 1
 VOLTS: 460.0
 HERTZ: 60
 RUN CAP: 25.00
 COMMENT 1:
 COMMENT 3:

DESCRIPTION: SYNC-0
 TYPE: CX
 BENCH: 3
 HP: 1.50
 ROTATION: CW
 BDT: 165.79
 LRA: 9.68
 LRT: 39.28
 COMMENT 4: