

PRODUCT INFORMATION PACKET



Model No: C660V1

Catalog No: C660V1

Condenser Fan Motor, 3/4 HP, 1 Ph, 60 Hz, 460/200-230 V, 900 RPM, N56Y Frame, OAO



Regal and Century are trademarks of Regal Rexnord Corporation or one of its affiliated companies.

©2023 Regal Rexnord Corporation, All Rights Reserved. MC017097E





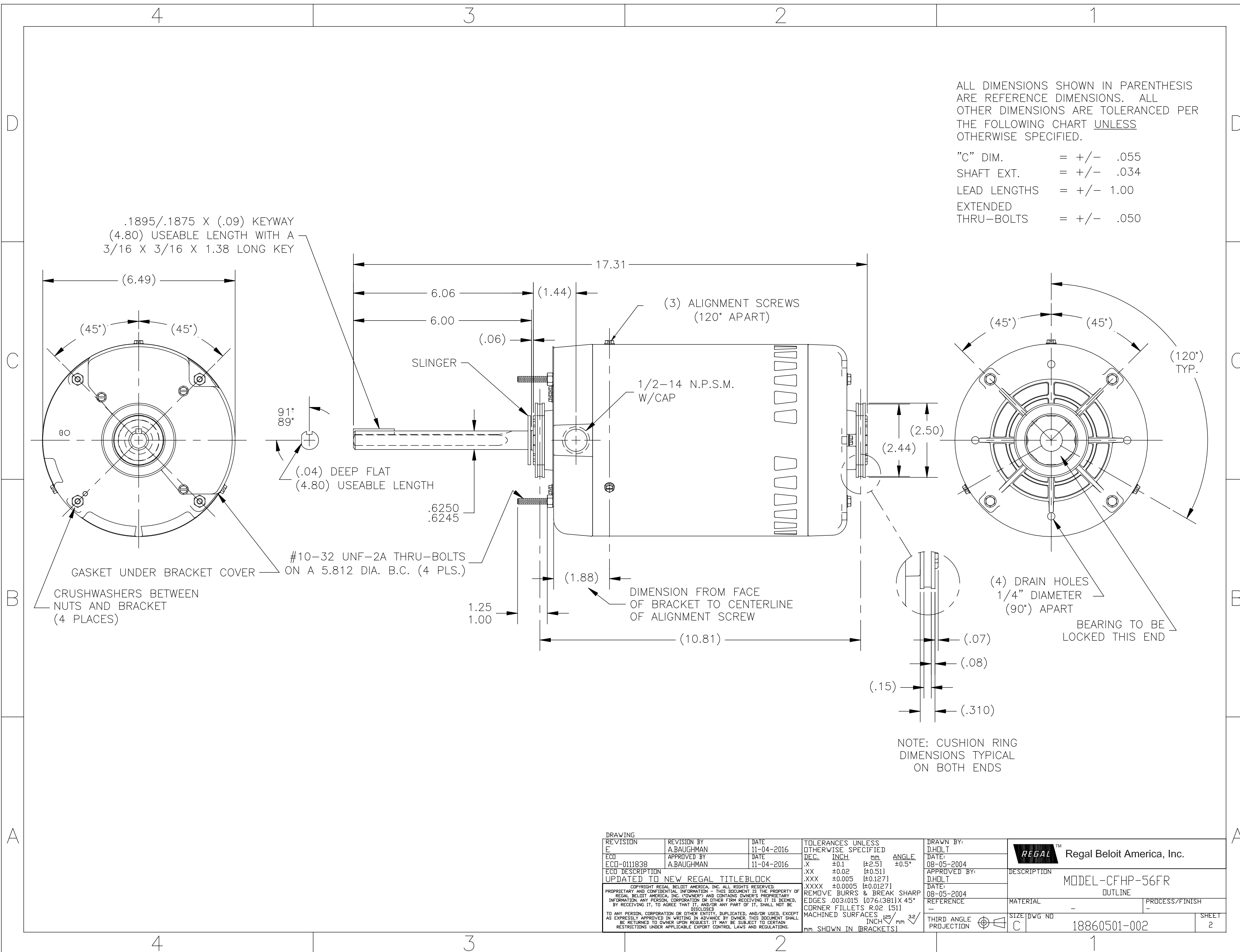
Nameplate Specifications

Output HP	3/4 Hp	Output KW	0.56 kW
Frequency	60 Hz	Voltage	460/200-230 V
Current	2.6/5.3-5.2 A	Speed	825 rpm
Service Factor	1	Phase	1
Duty	Continuous	Insulation Class	B
Frame	N56Y	Enclosure	Open Air Over
Thermal Protection	Thermally Protected	Ambient Temperature	60 °C
UL	Recognized	CSA	Y
CE	N	Number of Speeds	1

Technical Specifications

Electrical Type	Permanent Split Capacitor, Single Or Dual Voltage	Starting Method	Across The Line
Poles	8	Rotation	Reversible Clockwise
Mounting	Resilient Base	Drive End Bearing	Ball
Opp Drive End Bearing	Ball	Frame Material	Rolled Steel
Shaft Type	Keyed	Overall Length	17.31 in
Frame Length	7.25 in	Shaft Diameter	0.625 in
Shaft Extension	6.00 in		
Connection Drawing	17050612.PCX	Outline Drawing	18860501-002-S02

This is an uncontrolled document once printed or downloaded and is subject to change without notice. Date Created:02/16/2023



DRAWING		REVISION BY		DATE	TOLERANCES UNLESS OTHERWISE SPECIFIED		DRAWN BY:		REGAL™ Regal Beloit America, Inc.			
REVISION	E	A.BAUGHMAN	11-04-2016	11-04-2016	DEC.	INCH	mm	ANGLE	D.HOLT			
ECO	ECO-0111838	A.BAUGHMAN	11-04-2016	11-04-2016	.X	±0.1	(±2.5)	±0.5°	DATE:	08-05-2004		
ECO DESCRIPTION	UPDATED TO NEW REGAL TITLEBLOCK				.XX	±0.02	(±0.51)		APPROVED BY:	D.HOLT		
COPYRIGHT REGAL BELOIT AMERICA, INC. ALL RIGHTS RESERVED. PROPRIETARY AND CONFIDENTIAL INFORMATION - THIS DOCUMENT IS THE PROPERTY OF REGAL BELOIT AMERICA, INC. (OWNER) AND CONTAINS OWNER'S PROPRIETARY INFORMATION. ANY PERSON, CORPORATION OR OTHER FIRM RECEIVING IT IS DEEMED, BY RECEIVING IT, TO AGREE THAT IT, AND/OR ANY PART OF IT, SHALL NOT BE DISCLOSED TO ANY PERSON, CORPORATION OR OTHER ENTITY, DUPLICATED, AND/OR USED, EXCEPT AS EXPRESSLY APPROVED IN WRITING IN ADVANCE BY OWNER. THIS DOCUMENT SHALL BE RETURNED TO OWNER UPON REQUEST. IT MAY BE SUBJECT TO CERTAIN RESTRICTIONS UNDER APPLICABLE EXPORT CONTROL LAWS AND REGULATIONS.					.XXX	±0.005	(±0.127)		DATE:	08-05-2004		
					.XXXX	±0.0005	(±0.0127)		REFERENCE	-		
					REMOVE BURRS & BREAK SHARP EDGES .003/015 [076/381]X 45° CORNER FILLETS R.02 [51] MACHINED SURFACES $\frac{125}{32}$ INCH $\frac{32}{mm}$ mm SHOWN IN [BRACKETS]			THIRD ANGLE PROJECTION		SIZE DWG NO	C	18860501-002
									PROCESS/FINISH	-		
									SHEET	2		