

# PRODUCT INFORMATION PACKET



Model No: C311V1

Catalog No: C311V1

0.5 HP General Purpose Farm Duty Motor, 1 phase, 1800 RPM, 115/230 V, 56 Frame, TEFC  
General Purpose Farm Duty Motors



Regal and Century are trademarks of Regal Rexnord Corporation or one of its affiliated companies.  
©2021 Regal Rexnord Corporation, All Rights Reserved. MC017097E





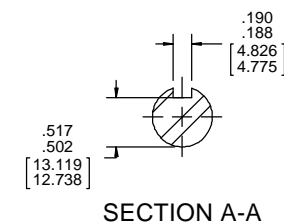
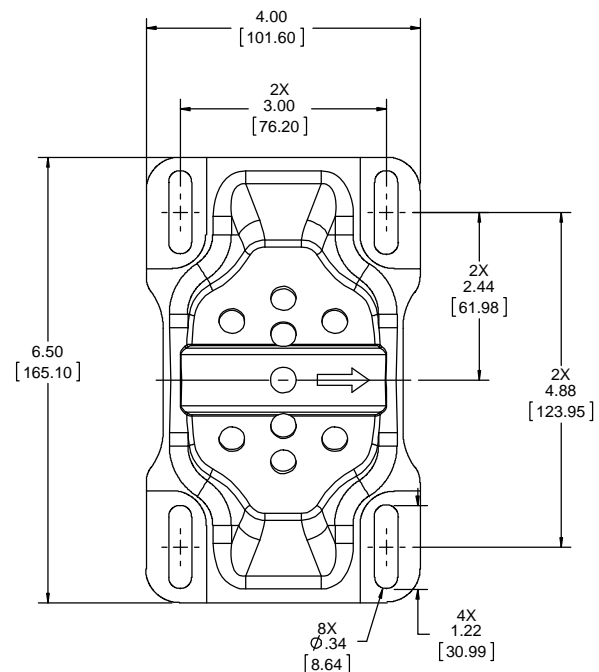
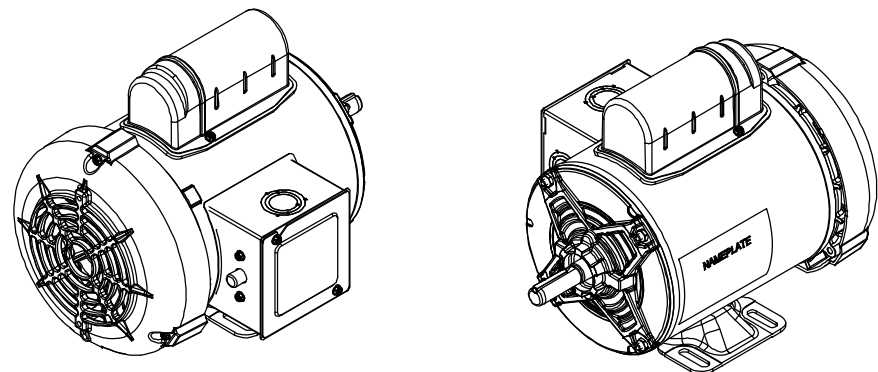
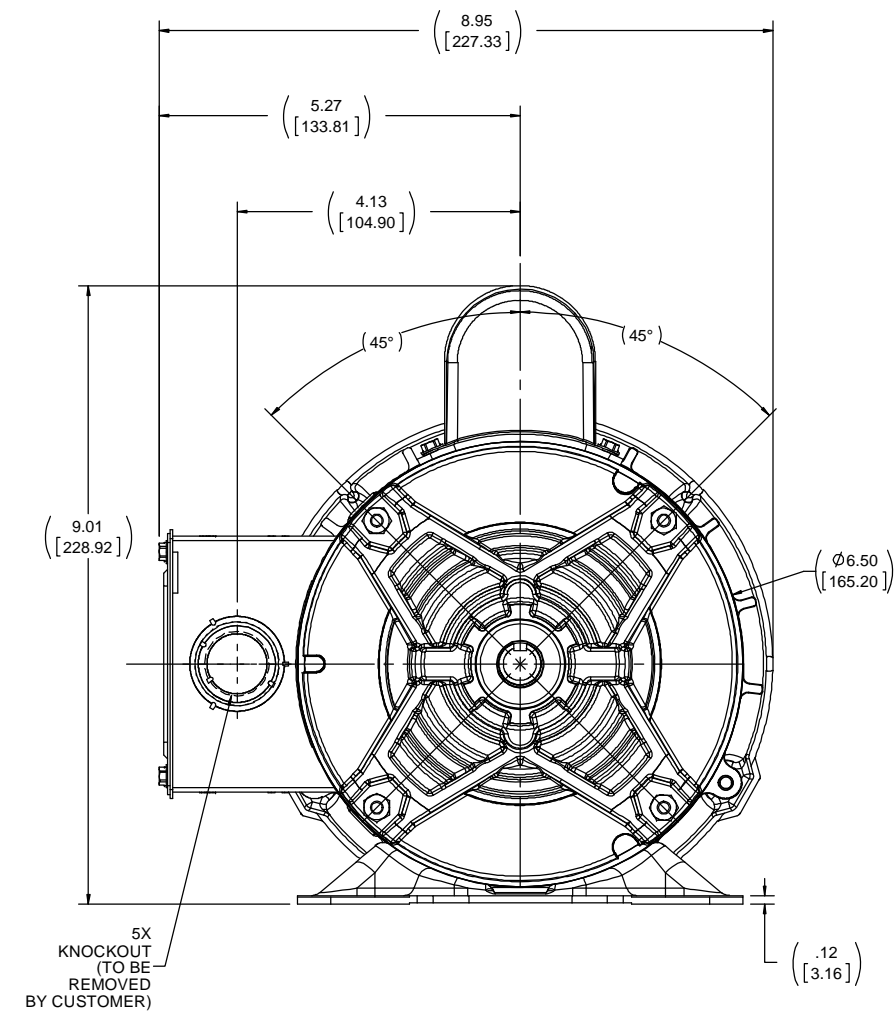
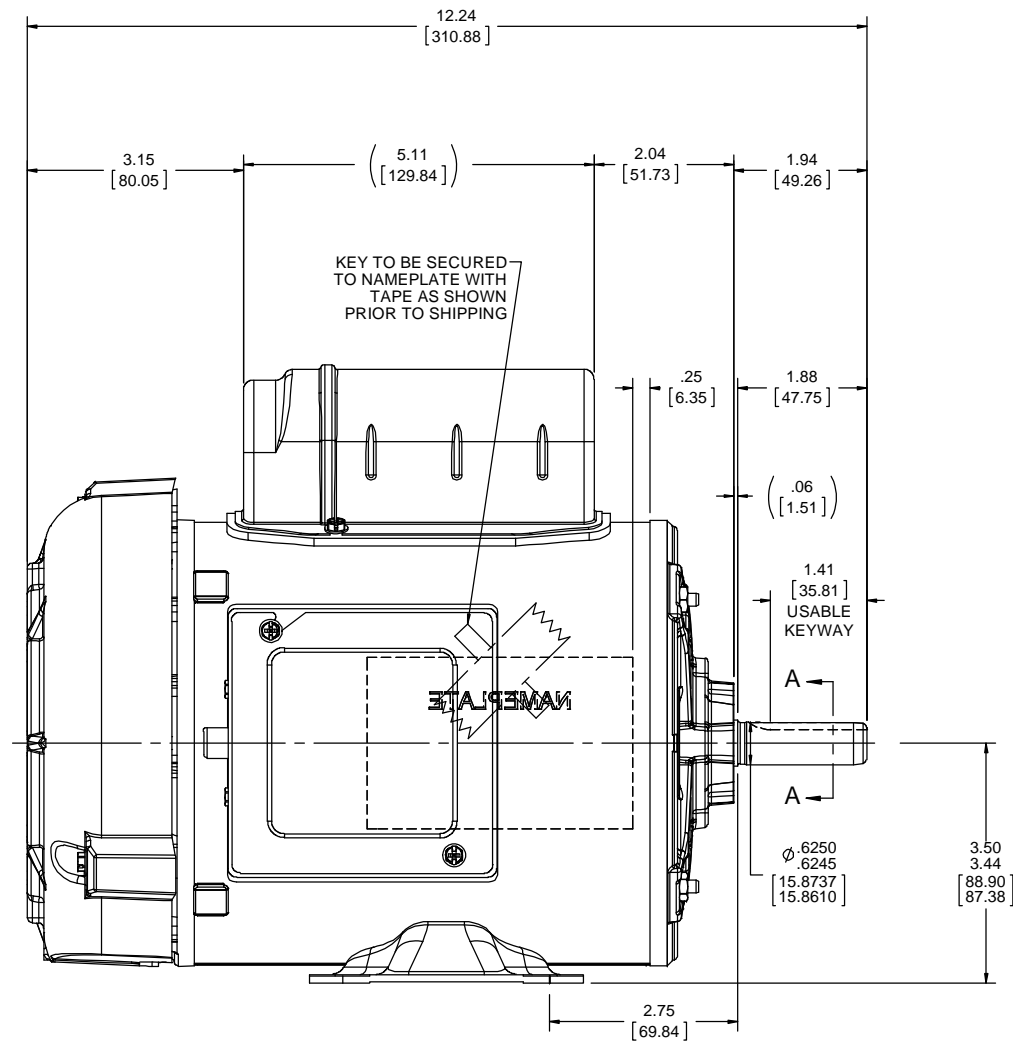
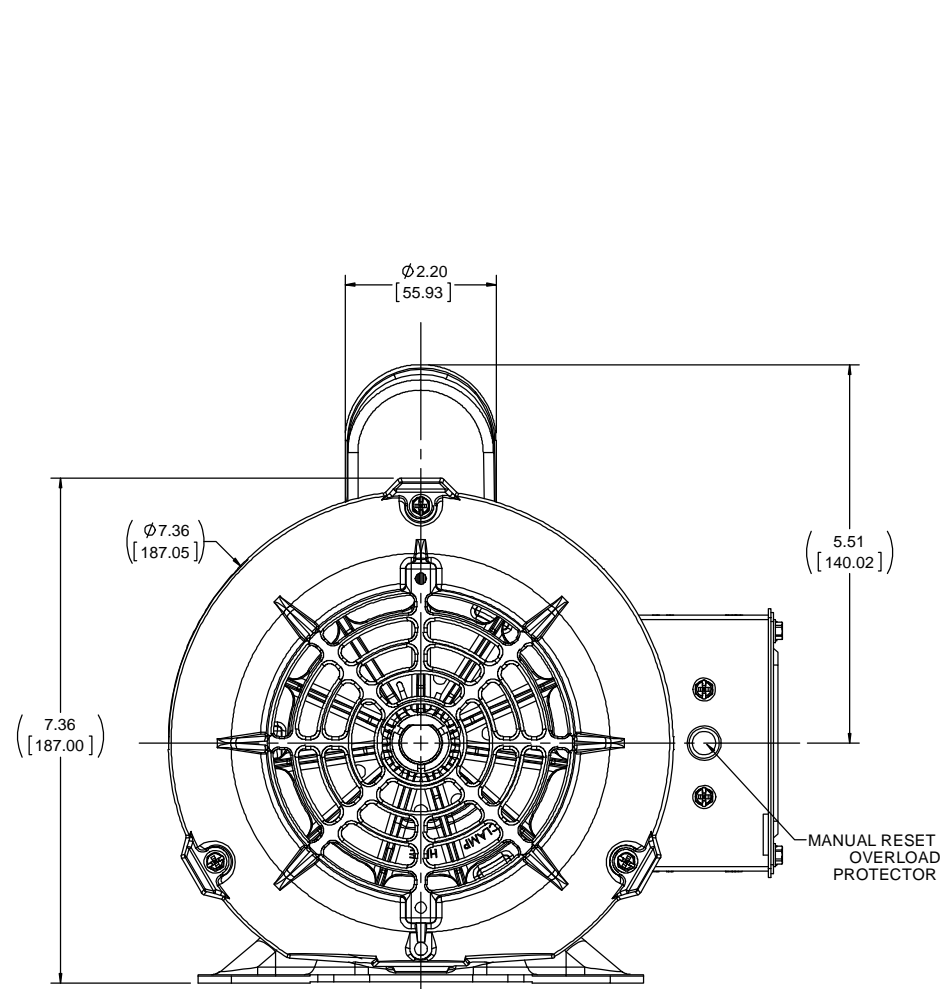
**Nameplate Specifications**

Output HP	<b>0.5 Hp</b>	Output KW	<b>0.37 kW</b>
Frequency	<b>60 Hz</b>	Voltage	<b>115/230 V</b>
Current	<b>6.8/3.4 A</b>	Speed	<b>1725 rpm</b>
Service Factor	<b>1.25</b>	Phase	<b>1</b>
Duty	<b>Continuous</b>	Insulation Class	<b>B</b>
Frame	<b>56</b>	Enclosure	<b>Totally Enclosed Fan Cooled</b>
Thermal Protection	<b>Thermally Protected</b>	Ambient Temperature	<b>40 °C</b>
UL	<b>Recognized</b>	CSA	<b>Y</b>
CE	<b>Y</b>	Number of Speeds	<b>1</b>

**Technical Specifications**

Electrical Type	<b>Capacitor Start Induction Run</b>	Starting Method	<b>Across The Line</b>
Poles	<b>4</b>	Rotation	<b>Selective Counterclockwise</b>
Mounting	<b>Rigid Base</b>	Drive End Bearing	<b>Ball</b>
Opp Drive End Bearing	<b>Ball</b>	Frame Material	<b>Rolled Steel</b>
Shaft Type	<b>Keyed</b>	Overall Length	<b>12.24 in</b>
Frame Length	<b>6.65 in</b>	Shaft Diameter	<b>0.625 in</b>
Shaft Extension	<b>1.88 in</b>		
Outline Drawing	<b>OL56100456-001</b>	Connection Drawing	<b>DD10076-001</b>

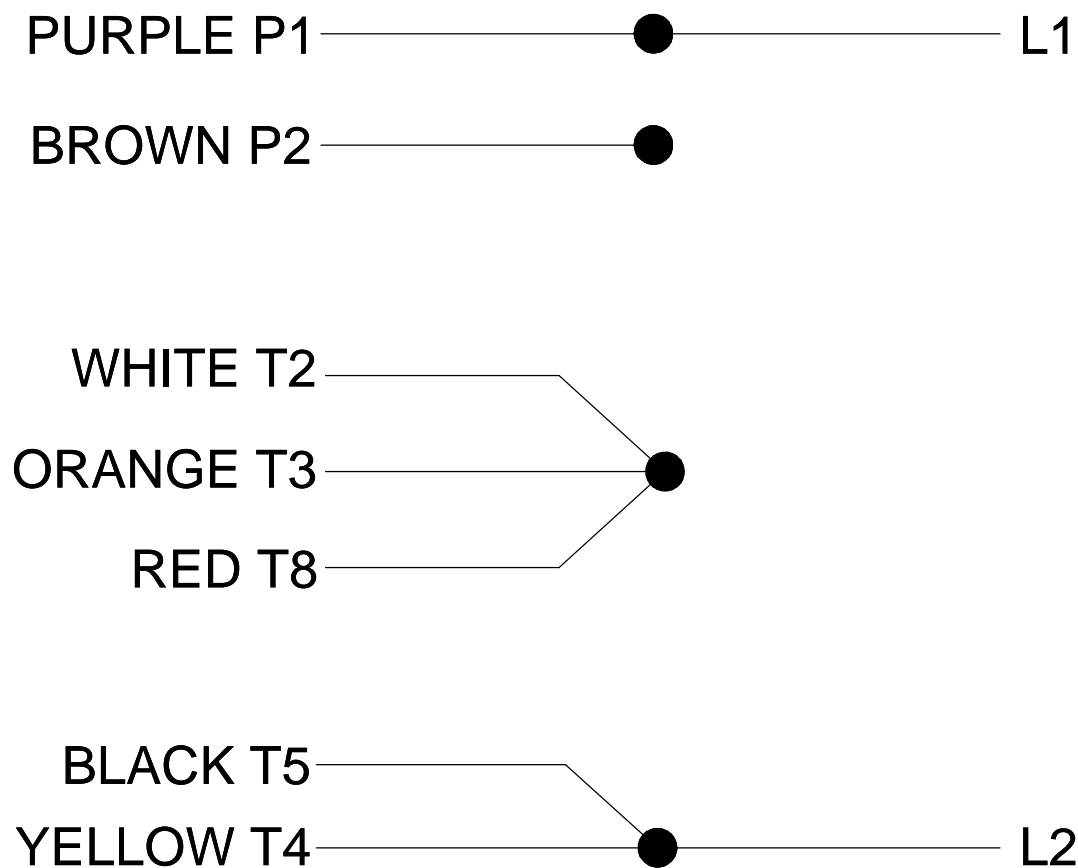
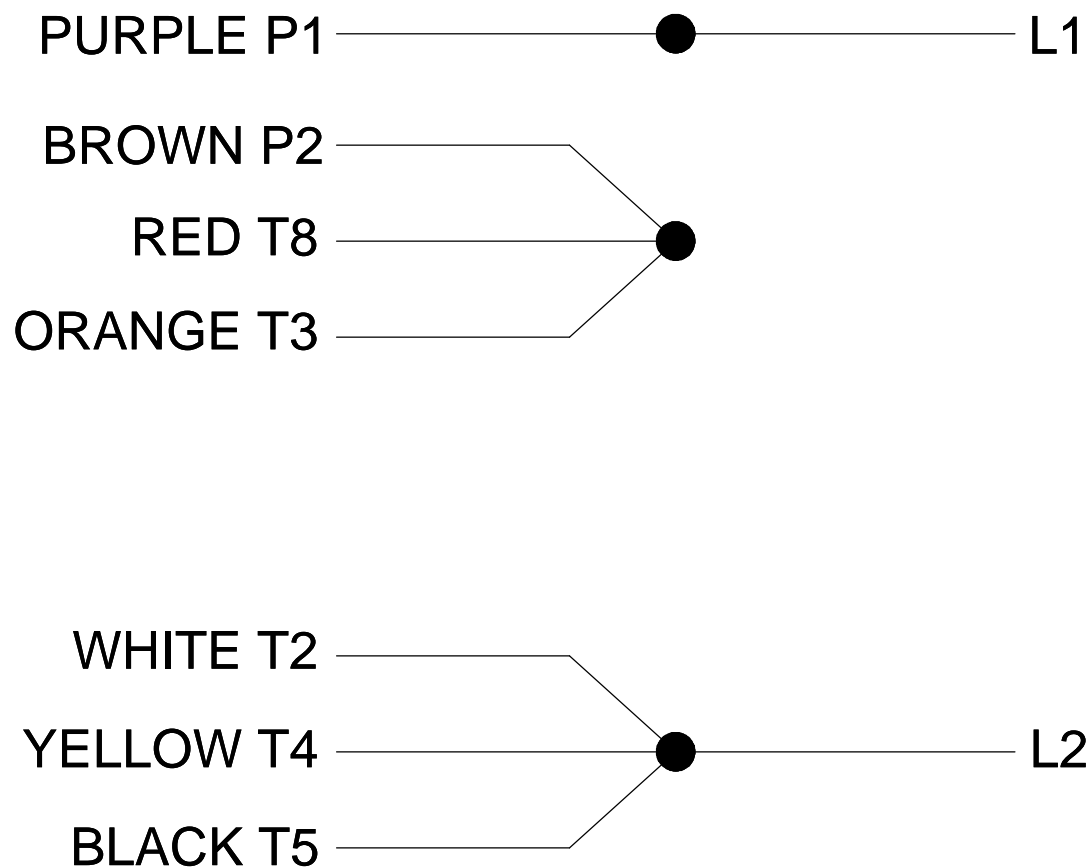
This is an uncontrolled document once printed or downloaded and is subject to change without notice. Date Created:10/07/2021



DRAWING REVISION A	REVISION BY MARGUELLES	DATE 01-03-2018	TOLERANCES UNLESS OTHERWISE SPECIFIED: DEC. INCH mm ANGLE .X .01 [2.5] .XX ±0.02 [±0.51] .XXX ±0.005 [±0.127] XXXX ±0.0005 [±0.0127]	DRAWN BY MARGUELLES	DATE 01-03-2018	DESCRIPTION OUTLINE
ECO-0137046	APPROVED BY	DATE	REMOVE BURRS & BREAK SHARP EDGES: .003/.015 [0.076/.381] X 45° CORNER FILLETS: R.02 [51] MACHINED SURFACES: .200/ INCH/ MIN/	APPROVED BY	DATE	MATERIAL 56 FR,TEFC,RIGID
<small>         COPYRIGHT REG. U.S. PAT. &amp; TM. OFF. ALL RIGHTS RESERVED.          PROPRIETARY AND CONFIDENTIAL INFORMATION - THIS DOCUMENT IS THE PROPERTY OF REGAL BELOIT AMERICA, INC. COMPANY AND CONTAINS OWNERS PROPRIETARY INFORMATION. ANY PERSON, CORPORATION OR OTHER FIRM RECEIVING IT IS DEEMED, BY RECEIVING IT, TO AGREE THAT IT, AND/OR ANY PART OF IT, SHALL NOT BE DISCLOSED TO ANY PERSON, CORPORATION OR OTHER ENTITY, DUPLICATED, AND/OR USED, EXCEPT AS EXPRESSLY APPROVED IN WRITING IN ADVANCE BY OWNER. THIS DOCUMENT SHALL BE RETURNED TO OWNER UPON REQUEST. IT MAY BE SUBJECT TO CERTAIN RESTRICTIONS UNDER APPLICABLE EXPORT CONTROL LAWS AND REGULATIONS.       </small>			<small>         THIRD ANGLE PROJECTION       </small>	<small>         SIZE D       </small>	<small>         DRAWING NUMBER OL56100456-001       </small>	<small>         SHEET 1 OF 1       </small>

### LOW VOLTAGE

### HIGH VOLTAGE



DD10076-001

## ROTATION CCW-LE TO REVERSE EITHER VOLTAGE INTERCHANGE RED T8 AND BLACK T5 LEADS

PLATE: 41365

SLOT: 22

DRAWING REVISION C	REVISION BY G. RODRIGUEZ	DATE 01-25-2017	TOLERANCES UNLESS OTHERWISE SPECIFIED:		DRAWN BY G. RODRIGUEZ	Regal Beloit America, Inc.
ECO ECO-0144737	APPROVED BY VC	DATE 01-25-2017	DEC. .X ±0.1 [±2.5] .XX ±0.01 [±0.25] .XXX ±0.005 [±0.127] .XXXX ±0.0005 [±0.0127]	ANGLE ±0.5°	DATE 04-11-2017	
ECO DESCRIPTION REMOVE T1 & BLUE			REMOVE BURRS & BREAK SHARP EDGES: .003/.015 [.076/.381] X 45° CORNER FILLETS: R.02 [.51]		APPROVED BY R. VALENZUELA	DESCRIPTION CONN DIAGRAM-NAMEPLATE
<small>COPYRIGHT REGAL BELOIT AMERICA, INC. ALL RIGHTS RESERVED. PROPRIETARY AND CONFIDENTIAL INFORMATION - THIS DOCUMENT IS THE PROPERTY OF REGAL BELOIT AMERICA, INC. ("OWNER") AND CONTAINS OWNER'S PROPRIETARY INFORMATION. ANY PERSON, CORPORATION OR OTHER FIRM RECEIVING IT IS DEEMED, BY RECEIVING IT, TO AGREE THAT IT, AND/OR ANY PART OF IT, SHALL NOT BE DISCLOSED TO ANY PERSON, CORPORATION OR OTHER ENTITY, DUPLICATED, AND/OR USED, EXCEPT AS EXPRESSLY APPROVED IN WRITING IN ADVANCE BY OWNER. THIS DOCUMENT SHALL BE RETURNED TO OWNER UPON REQUEST. IT MAY BE SUBJECT TO CERTAIN RESTRICTIONS UNDER APPLICABLE EXPORT CONTROL LAWS AND REGULATIONS.</small>			MACHINED SURFACES: 125/3.2 INCH/mm		DATE 04-11-2017	MATERIAL
			mm SHOWN IN [BRACKETS]		REFERENCE	PROCESS/FINISH
			THIRD ANGLE PROJECTION		SIZE B	DRAWING NUMBER DD10076-001
						SHEET 1 OF 1