

# PRODUCT INFORMATION PACKET



Model No: C036

Catalog No: C036

OEM Replacement Motor, 1/3 HP, 1 Ph, 60 Hz, 115 V, 900 RPM, Y56Z Frame, TEAO



Regal and Century are trademarks of Regal Rexnord Corporation or one of its affiliated companies.

©2023 Regal Rexnord Corporation, All Rights Reserved. MC017097E





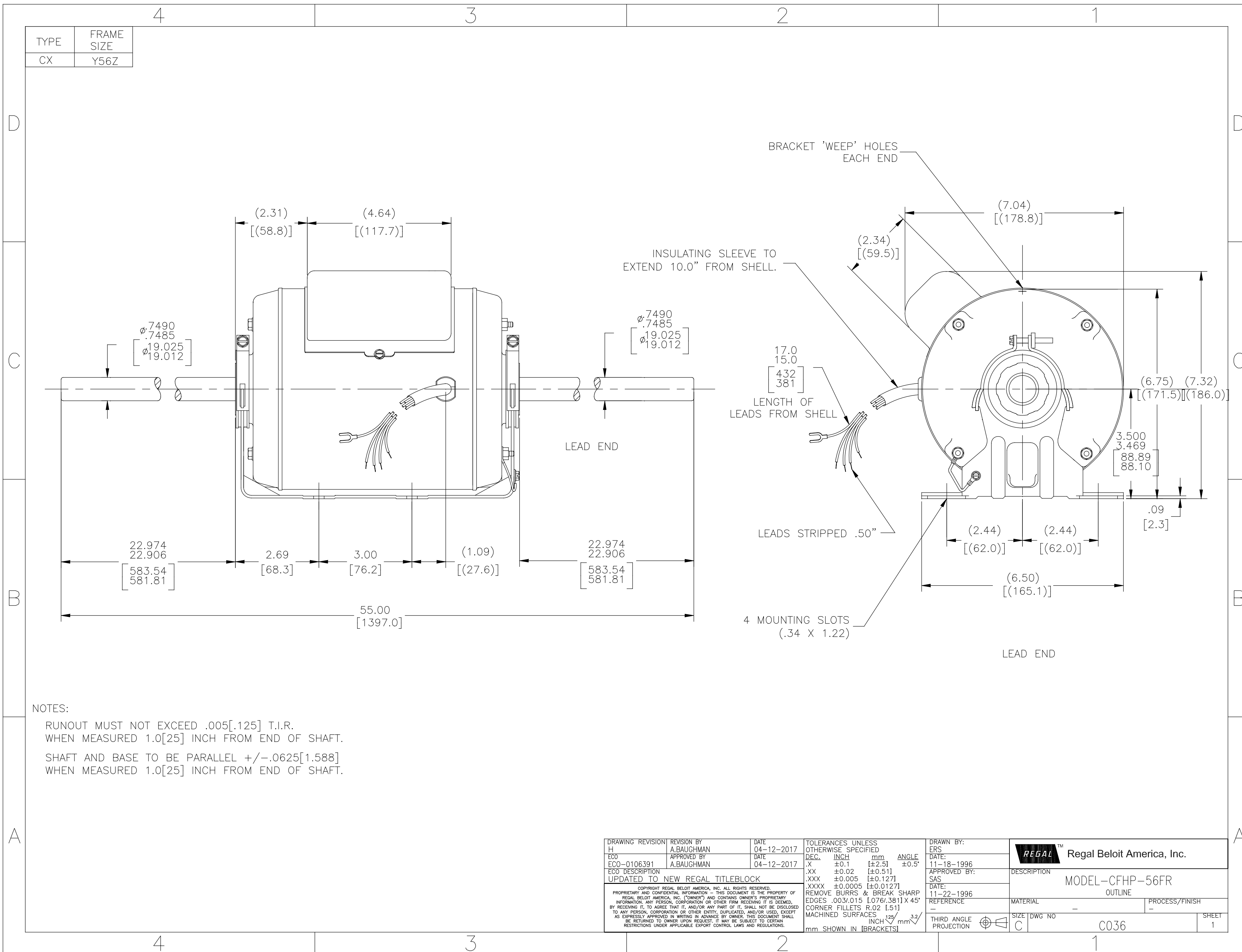
### Nameplate Specifications

Output HP	1/3 Hp	Output KW	0.25 kW
Frequency	60 Hz	Voltage	115 V
Current	5.0 A	Speed	850 rpm
Service Factor	1	Phase	1
Duty	Continuous	Insulation Class	B
Frame	Y56Z	Enclosure	Totally Enclosed Air Over
Thermal Protection	Thermally Protected	Ambient Temperature	40 °C
UL	Recognized	CSA	Y
CE	N	Number of Speeds	1

### Technical Specifications

Electrical Type	Permanent Split Capacitor, Single Or Dual Voltage	Starting Method	Across The Line
Poles	8	Rotation	Reversible Counterclockwise
Mounting	Cushion Base	Drive End Bearing	Ball
Opp Drive End Bearing	Ball	Frame Material	Rolled Steel
Shaft Type	Special Extension	Overall Length	55.00 in
Frame Length	6.13 in	Shaft Diameter	0.749 in
Shaft Extension	22.97 in		
Connection Drawing	18565718.PCX	Outline Drawing	C036-S01

This is an uncontrolled document once printed or downloaded and is subject to change without notice. Date Created:03/15/2023



NOTES:

RUNOUT MUST NOT EXCEED .005[.125] T.I.R.  
WHEN MEASURED 1.0[25] INCH FROM END OF SHAFT.  
SHAFT AND BASE TO BE PARALLEL +/- .0625[1.588]  
WHEN MEASURED 1.0[25] INCH FROM END OF SHAFT.

DRAWING REVISION H	REVISION BY A.BAUGHMAN	DATE 04-12-2017	TOLERANCES UNLESS OTHERWISE SPECIFIED	DRAWN BY: ERS	Regal Beloit America, Inc.
ECO ECO-0106391	APPROVED BY A.BAUGHMAN	DATE 04-12-2017	DEC. INCH mm ANGLE .X ±0.1 [±2.5] ±0.5° .XX ±0.02 [±0.51] .XXX ±0.005 [±0.127] .XXXX ±0.0005 [±0.0127]	DATE: 11-18-1996	
ECO DESCRIPTION UPDATED TO NEW REGAL TITLEBLOCK			REMOVE BURRS & BREAK SHARP EDGES .003/.015 [.076/.381] X 45° CORNER FILLETS R.02 [.51]	APPROVED BY: SAS	DESCRIPTION MODEL-CFHP-56FR OUTLINE
<small>COPYRIGHT REGAL BELOIT AMERICA, INC. ALL RIGHTS RESERVED. PROPRIETARY AND CONFIDENTIAL INFORMATION - THIS DOCUMENT IS THE PROPERTY OF REGAL BELOIT AMERICA, INC. (OWNER) AND CONTAINS OWNER'S PROPRIETARY INFORMATION. ANY PERSON, CORPORATION OR OTHER FIRM RECEIVING IT IS DEEMED, BY RECEIVING IT, TO AGREE THAT IT, AND/OR ANY PART OF IT, SHALL NOT BE DISCLOSED TO ANY PERSON, CORPORATION OR OTHER ENTITY, DUPLICATED, AND/OR USED, EXCEPT AS EXPRESSLY APPROVED IN WRITING IN ADVANCE BY OWNER. THIS DOCUMENT SHALL BE RETURNED TO OWNER UPON REQUEST. IT MAY BE SUBJECT TO CERTAIN RESTRICTIONS UNDER APPLICABLE EXPORT CONTROL LAWS AND REGULATIONS.</small>			MACHINED SURFACES 125/INCH 3.2/mm	DATE: 11-22-1996	MATERIAL -
			mm SHOWN IN [BRACKETS]	REFERENCE -	PROCESS/FINISH -
			THIRD ANGLE PROJECTION	SIZE DWG NO C C036	SHEET 1